





Quick Installation Guide  

**TEW-640MB**  
1.01

# Table of Contents

English	1
1. Before You Start	1
2. Hardware Installation	2
3. Configure the TEW-640MB	3
4. Wi-Fi Protected Setup (WPS) Push Button Setup	7
.....	
Troubleshooting	9
Wireless Tips	12



## Package Contents

- TEW-640MB
- CD-ROM (User's Guide)
- Multi-Language Quick Installation Guide
- Power Adapter (12V DC, 0.5A)
- Network Cable (0.6m/2ft.)

## System Requirements

- A computer with network adapter installed
- Wireless router (e.g. TEW-639GR) or access point (e.g. TEW-690AP)
- An available DHCP Server –wireless routers usually have a built-in DHCP server
- A media device (e.g. Game Console, Blu-ray player, Internet Ready TV, etc.) with an Ethernet port
- Web Browser: Internet Explorer (6.0 or higher)

## 2. Hardware Installation

### **Note:**

- 1: Wi-Fi Protected Setup (WPS) allows you to quickly connect to your wireless router or access point. If you would like to use WPS push button setup, please go directly to section 4. Wi-Fi Protected Setup (WPS) Push Button Setup. If your wireless router or access point does not support WPS, continue on to section 2 in the Hardware Installation.
- 2: Do not connect/install the TEW-640MB to your network until instructed to do so.

1. Connect one end of the provided RJ-45 network cable to one of the TEW-640MB's LAN ports. Connect the other end of the cable to your computer's network port.



2. Connect the Power Adapter to the TEW-640MB and then to a power outlet. EU Versions will have a power button on the back. Push the power button to the "On" position (EU Version). Wait 30 seconds for the TEW-640MB to boot up.



3. Verify that the following panel lights are on:

**Wireless** (Blue/Blinking)

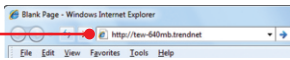
**Network Port** (1-4) (Blue/Blinking)

**Power** (Blue/Solid)



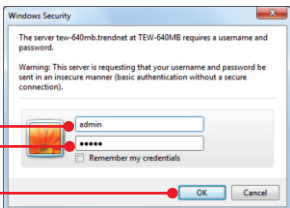
### 3. Configure the TEW-640MB

1. Open your web browser, type <http://tew-640mb.trendnet> in the Address bar, and then press **Enter**.



2. Enter the User Name and password and then click **OK**. Default Settings:  
User name: **admin**  
Password: **admin**

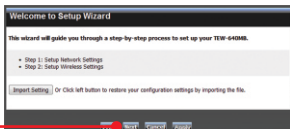
Note: User name and Password are case sensitive.



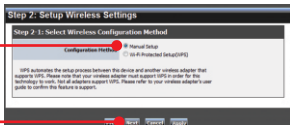
3. The Wizard will automatically appear. Click **Administration** → **Wizard** if the Wizard does not automatically appear.



4. Click **Next**.



5. Select **Manual Setup** and then click **Next**.



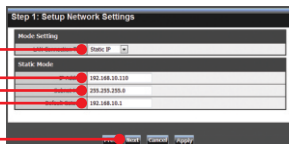
6. Select DHCP to have the TEW-640MB automatically obtain an IP address from your DHCP server (router). If Static IP address is selected you would need to configure the following:

**IP address:** The assigned IP address should be similar to your network. This IP address should not be used by any other network device on your network.

**Subnet Mask:** In most cases, the default Subnet Mask (255.255.255.0) should be fine.

**Default Gateway:** Enter the IP address of your router for the Default Gateway.

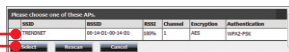
Then click **Next**.



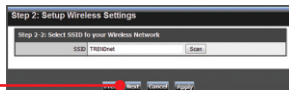
7. Click **Scan**.



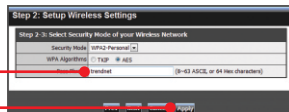
8. Select a SSID and then click **Select**. The SSID is the wireless network name of your wireless network (e.g. wireless router or access point).



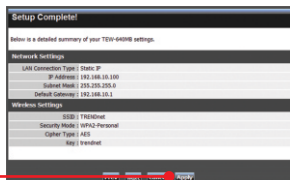
9. Click **Next**.



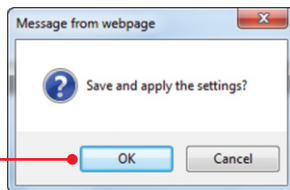
10. If Encryption is enabled on your wireless network (e.g. access point or wireless router) the correct Security Mode and Algorithm will be automatically selected. Enter the Pass Phrase (wireless network password) and then click **Apply**.



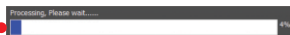
11. Verify that your settings are correct and then click **Apply**.



12. Click **OK**.



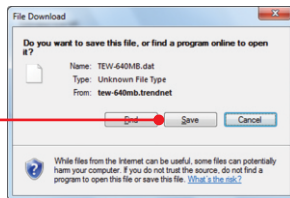
13. Wait while your settings are being applied.



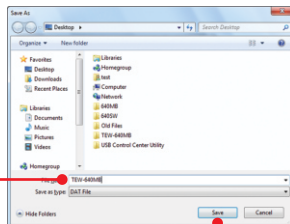
14. Click **Export Setting** (optional). This saves your configuration settings in a file, which can be reloaded when needed.



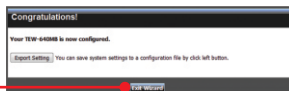
15. Click **Save** (optional).



16. Give the file a name, then click **Save**.



### 17. Click Exit Wizard.



### 18. Unplug the power adapter and disconnect the TEW-640MB from your computer. Place the TEW-640MB in your desired location. Please refer to the Wireless Tips section for optimal placement of the TEW-640MB.

### 19. Plug the power adapter of the TEW-640MB and connect one end of a network cable to one of the TEW-640MB's LAN ports. Connect the other end of the cable to your media device's (e.g. Game Console, Blu-ray player, Internet Ready TV, etc.) network port. Verify that the following panel lights are on: Power (Blue/Blinking), Network Port (1-4) (Blue/Blinking), and Wireless (Blue/Blinking)



### 20. Verify that your network media device is connected to your network. If the network setting on your media device is set to obtain an IP address automatically (dynamic IP) an IP address will be assigned automatically. Please refer to the manual or contact your media device's technical support for instructions.

## Configuration is complete

For detailed information regarding the **TEW-640MB's** configuration and advanced settings, please refer to the Troubleshooting section, User's Guide on the Utility CD-ROM, or TRENDnet's website at <http://www.trendnet.com>.

## Register Your Product

To ensure the highest level of customer service and support, please take a moment to register your product Online at: [www.trendnet.com/register](http://www.trendnet.com/register)

Thank you for choosing TRENDnet



## 4. Wi-Fi Protected Setup (WPS) Push Button Setup

### Note:

- 1: Wi-Fi Protected Setup (WPS) allows you to quickly connect to your wireless router or access point.
- 2: Do not connect/install the TEW-640MB to your network until instructed to do so. Make sure your network adapter settings are set to obtain an IP address automatically (see troubleshooting section).

1. Find a location where you would like to place the TEW-640MB. The location must be within the wireless coverage of your router or access point. Please refer to the wireless tips sections for additional information.

2. Connect the Power Adapter to the TEW-640MB and then to a power outlet. EU Versions will have a power button on the back. Push the power button to the "On" position (EU Version). Wait 30 seconds for the TEW-640MB to boot up.

3. Press and hold the WPS button on your wireless router or access point for 2 seconds. The example shows a TEW-690AP access point.

4. Within 60 seconds press and hold the WPS button on the TEW-640MB for 2 seconds. The WPS button will start to blink.

5. Once the WPS button becomes steady blue (approximately within 120 seconds), the TEW-640MB has been successfully configured.



6. Connect one end of a network cable to one of the TEW-640MB's LAN ports. Connect the other end of the network cable to your media device's (e.g. Game Console, Blu-ray player, Internet Ready TV, etc.) network port. Verify that the panel lights are on: Power (Blue/Blinking), Network Port (1-4) (Blue/Blinking), and Wireless (Blue/Blinking)

7. Verify that your network media device is connected to your network. If the network setting on your media device is set to obtain an IP address automatically (dynamic IP) an IP address will be assigned automatically. Please refer to the manual or contact your media device's technical support for instructions.



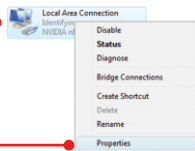
**Configuration is now complete.**

1. I typed <http://tew-640mb.trendnet> in my Internet Browser's Address Bar, but an error message says "The page cannot be displayed." How can I get into the TEW-640MB's web configuration page?

1. Check your hardware settings again by following the instructions in section 2.
2. Make sure the Network Port and Wireless lights are lit.
3. Enter <http://192.168.10.110> into the browser instead. This is the default IP address of the TEW-640MB. Make sure your network adapter's TCP/IP settings are set to Obtain an IP address automatically (see the steps below).
4. Reset the TEW-640MB. Take a pin or paperclip and press the RESET button for 15 seconds, then let go. Wait 30 seconds, then type <http://tew-640mb.trendnet> or <http://192.168.10.110> into your browser.

## Windows 7

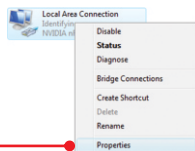
1. Go into the **Control Panel**, click **Network and Internet**, click **Network and Sharing Center**, click **Change Adapter Settings** and then right-click the **Local Area Connection** icon and then click **Properties**.



2. Click **Internet Protocol Version 4(TCP/IPv4)** and then click **Properties**. Then click on **Obtain an IP address automatically**.

## Windows Vista

1. Go into the **Control Panel**, click **Network and Internet**, click **Network and Sharing Center**, click **Manage Network Connections** and then right-click the **Local Area Connection** icon and then click **Properties**.



2. Click **Internet Protocol Version 4(TCP/IPv4)** and then click **Properties**. Then click on **Obtain an IP address automatically**.

## Windows XP/2000

1. Go into the **Control Panel**, double-click the **Network Connections** icon and then right-click the **Local Area Connection** icon and then click **Properties**.



2. Click **Internet Protocol (TCP/IP)** and then click **Properties**. Then click on **Obtain an IP address automatically**.

### 2. My Nintendo does not have an Ethernet port. Can I use this with my Wii?

You will need to install a USB to Ethernet adapter on your Wii. The TRENDnet TU2-ET100 version 3.0R is compatible with the Wii. Please go to [www.trendnet.com](http://www.trendnet.com) for more information regarding the TU2-ET100.

### 3. I completed all the steps in the quick installation guide, but the TEW-640MB is not connecting to my wireless network (e.g. wireless router or access point). What should I do?

1. Verify that the SSID (Wireless Network Name) matches your wireless router or access point's SSID (Wireless Network Name).
2. Check with your network administrator for security key in order to access a secured wireless access point or router. Please refer to the User's Guide for more information regarding wireless network security.
3. Please refer to the Wireless tips section if you continue to have wireless connectivity problems.

### 4. I connect the TEW-640MB to my game console, but I am unable to play games online. What should I do?

1. Verify that a computer can get online through the router wirelessly.
2. Verify that the network setting on your game console is set to obtain an IP address automatically (dynamic IP). Please refer to the manual or contact your game console's technical support for instructions.
3. Power cycle the TEW-640MB and your wireless router or wireless access point. Unplug the power to the TEW-640MB and your wireless router or wireless access point. Wait 15 seconds, then plug the power to your wireless router or access point back in. Wait 15 seconds, then plug the power to your TEW-640MB back in.
4. Factory reset the TEW-640MB and reconfigure your settings. To reset the TEW-640MB, take a pin or paper clip and press the reset button for 15 seconds, then let go. The reset button is located on the bottom of the TEW-640MB. Then type <http://tew-640mb.trendnet> or <http://192.168.10.110> into your browser and re-connect to your wireless network following section 3 or connect using WPS by following section 4.

**5. I followed the Quick Installation Guide and setup a new password. When I log in to the browser configuration an access error message appears. What should I do?**

The default user name and password are both "admin". When you log in to the browser configuration for the first time, make sure to enter admin for user name. Do not leave the user name field blank. If the password was changed and you don't remember it, you need to reset the TEW-640MB. To reset the TEW-640MB, take a pin or paper clip and press the reset button for 15 seconds, then let go. The reset button is located on the bottom of the TEW-640MB. Please note that performing a reset on the TEW-640MB will erase all settings applied and will revert back to default settings. You will need to reconfigure the TEW-640MB, type <http://tew-640mb.trendnet> or <http://192.168.10.110> into your browser and re-connect to your wireless network following section 3 or connect using WPS by following section 4.

**6. Do I need a gaming console in order to use this device?**

The TEW-640MB is compatible with any Ethernet-enabled device.

If you still encounter problems or have any questions regarding the **TEW-640MB**, please contact TRENDnet's Technical Support Department.

The following are some general wireless tips to help minimize the impact of interference within an environment.

## **Assign your network a unique SSID**

Do not use anything that would be identifying like "Smith Family Network". Choose something that you would easily identify when searching for available wireless networks.

## **Do not turn off the SSID broadcast**

The SSID broadcast is intended to be on and turning it off can cause connectivity issues. The preferred method of securing a wireless network is to choose a strong form of encryption with a strong and varied encryption key.

**Note: after setting up the SSID, encryption type and encryption key/passphrase, please make a note of them for future reference. You will need this information to connect your wireless computers to the wireless router/access point.**

## **Change the channel**

Most wireless access points and routers are defaulted to channel 6. If you have a site survey tool that will display the channels you can plan your channel selection around neighboring access points to minimize interference from them. If your site survey tool does not display the channel try using channels 1 or 11.

## **Change the channel bandwidth**

If you are using 802.11n you should be securing the network with WPA2 security.

**Note: Due to Wi-Fi certification considerations if you choose WEP, WPA or WPA2-TKIP encryption this device may operate in legacy wireless mode (802.11b/g). You may not get 802.11n performance as these forms of encryption are not supported by the 802.11n specification.**

## **Avoid stacking hardware on top of each other to prevent overheating issues**

Maintain enough free space around the hardware for good ventilation and airflow. There should also be plenty of free space around the antennas to allow the wireless signal to propagate. Please also make sure that the wireless hardware is not placed in any type of shelving or enclosures.

## **There are a number of other environmental factors that can impact the range of wireless devices.**

1. Adjust your wireless devices so that the signal is traveling in a straight path, rather than at an angle. The more material the signal has to pass through the more signal you will lose.
2. Keep the number of obstructions to a minimum. Each obstruction can reduce the range of a wireless device. Position the wireless devices in a manner that will minimize the amount of obstructions between them.

3. Building materials can have a large impact on your wireless signal. In an indoor environment, try to position the wireless devices so that the signal passes through less dense material such as dry wall. Dense materials like metal, solid wood, glass or even furniture may block or degrade the signal.
4. Antenna orientation can also have a large impact on your wireless signal. Use the wireless adapter's site survey tool to determine the best antenna orientation for your wireless devices.
5. Interference from devices that produce RF (radio frequency) noise can also impact your signal. Position your wireless devices away from anything that generates RF noise, such as microwaves, HAM radios, Walkie-Talkies and baby monitors.
6. Any device operating on the 2.4GHz frequency will cause interference. Devices such as 2.4GHz cordless phones or other wireless remotes operating on the 2.4GHz frequency can potentially drop the wireless signal. Although the phone may not be in use, the base can still transmit wireless signals. Move the phone's base station as far away as possible from your wireless devices.

If you are still experiencing low or no signal consider repositioning the wireless devices or installing additional access points. The use of higher gain antennas may also provide the necessary coverage depending on the environment.

# Declaration of Conformity



## Company Information:

Company Name:  
TRENDnet, Inc.

Company Address:  
20675 Manhattan Place  
Torrance, CA 90501  
USA

## Product Information:

Product Description:  
300Mbps Wireless N 4-Port Media Bridge

Model Number:  
TEW-640MB

Brand name:  
TRENDnet



## Technical Standards:

EN 300 328 V1.7.1: 10-2006  
EN 301 489-1 V1.8.1: 04-2008  
EN 301 489-17 V1.3.2: 04-2008  
EN 50385 : 2002  
EN 60950-1: 2006 + A11 : 2009

## Declaration:

*The product is herewith confirmed to comply with the requirements of Directive 1999/5/EC of the Council (European Parliament) on the radio and telecommunications terminal equipment and Energy-related products Directive 2009/125/EC.*

*I hereby declare that the products and devices mentioned above are consistent with the standards and provisions of the guidelines.*

Sonny Su

Full Name

November 15, 2010

Date

Director of Technology

Position / Title

Signature



## GPL/LGPL General Information

This TRENDnet product includes free software written by third party developers. These codes are subject to the GNU General Public License ("GPL") or GNU Lesser General Public License ("LGPL"). These codes are distributed WITHOUT WARRANTY and are subject to the copyrights of the developers. TRENDnet does not provide technical support for these codes. The details of the GNU GPL and LGPL are included in the product CD-ROM.

Please also go to (<http://www.gnu.org/licenses/gpl.txt>) or (<http://www.gnu.org/licenses/lgpl.txt>) for specific terms of each license.

The source codes are available for download from TRENDnet's web site ([http://trendnet.com/downloads/list\\_gpl.asp](http://trendnet.com/downloads/list_gpl.asp)) for at least three years from the product shipping date.

You could also request the source codes by contacting TRENDnet.

20675 Manhattan Place, Torrance, CA 90501, USA. Tel: +1-310-961-5500 Fax: +1-310-961-5511

### Informations générales GPL/LGPL

Ce produit TRENDnet comprend un logiciel libre écrit par des programmeurs tiers. Ces codes sont sujet à la GNU General Public License ("GPL" Licence publique générale GNU) ou à la GNU Lesser General Public License ("LGPL" Licence publique générale limitée GNU). Ces codes sont distribués SANS GARANTIE et sont sujets aux droits d'auteurs des programmeurs. TRENDnet ne fournit pas d'assistance technique pour ces codes. Les détails concernant les GPL et LGPL GNU sont repris sur le CD-ROM du produit.

Veuillez également vous rendre en (<http://www.gnu.org/licenses/gpl.txt>) ou en (<http://www.gnu.org/licenses/lgpl.txt>) pour les conditions spécifiques de chaque licence.

Les codes source sont disponibles au téléchargement sur le site Internet de TRENDnet web site ([http://trendnet.com/downloads/list\\_gpl.asp](http://trendnet.com/downloads/list_gpl.asp)) durant au moins 3 ans à partir de la date d'expédition du produit.

Vous pouvez également demander les codes source en contactant TRENDnet.

20675 Manhattan Place, Torrance, CA 90501, USA. Tel: +1-310-961-5500 Fax: +1-310-961-5511

### Allgemeine Informationen zu GPL/LGPL

Dieses Produkt enthält die freie Software "netfilter/iptables" (© 2000-2004 netfilter project <http://www.netfilter.org>) und die freie Software "\_Linux\_mtd" (Memory Technology Devices) Implementation (© 2000 David Woodhouse), erstmals integriert in Linux Version 2.4.0-test 3 v. 10.07.2000 (<http://www.kernel.org/pub/linux/kernel/v2.4/old-test-kernels/linux-2.4.0-test3.tar.bz2>), sowie weitere freie Software. Sie haben durch den Erwerb dieses Produktes keinerlei Gewährleistungsansprüche gegen die Berechtigten an der oben genannten Software erworben; weil diese die Software kostenfrei lizenzieren gewähren sie keine Haftung gemäß unten abgedruckten Lizenzbedingungen. Die Software darf von jedermann im Quell- und Objektcode unter Beachtung der Lizenzbedingungen der GNU General Public License Version 2, und GNU Lesser General Public License (LGPL) vervielfältigt, verbreitet und verarbeitet werden. Die Lizenz ist unten im englischsprachigen Originalwortlaut wiedergegeben. Eine nichtoffizielle Übersetzung in die deutsche Sprache finden Sie im Internet unter (<http://www.gnu.de/documents/gpl-2.0.de.html>). Eine allgemeine öffentliche GNU Lizenz befindet sich auch auf der mitgelieferten CD-ROM.

Sie können Quell- und Objektcode der Software für mindestens drei Jahre auf unserer Homepage [www.trendnet.com](http://www.trendnet.com) im Downloadbereich ([http://trendnet.com/langen/downloads/list\\_gpl.asp](http://trendnet.com/langen/downloads/list_gpl.asp)) downloadend. Sofern Sie nicht über die Möglichkeit des Downloads verfügen können Sie bei TRENDnet.

20675 Manhattan Place, Torrance, CA 90501 - U.S.A. -, Tel.: +1-310-961-5500, Fax: +1-310-961-5511 die Software anfordern.

### Información general sobre la GPL/LGPL

Este producto de TRENDnet incluye un programa gratuito desarrollado por terceros. Estos códigos están sujetos a la Licencia pública general de GNU ("GPL") o la Licencia pública general limitada de GNU ("LGPL"). Estos códigos son distribuidos SIN GARANTÍA y están sujetos a las leyes de propiedad intelectual de sus desarrolladores. TRENDnet no ofrece servicio técnico para estos códigos. Los detalles sobre las licencias GPL y LGPL de GNU se incluyen en el CD-ROM del producto.

Consulte también el (<http://www.gnu.org/licenses/gpl.txt>) ó el (<http://www.gnu.org/licenses/lgpl.txt>) para ver las cláusulas específicas de cada licencia.

Los códigos fuentes están disponibles para ser descargados del sitio Web de TRENDnet

([http://trendnet.com/downloads/list\\_gpl.asp](http://trendnet.com/downloads/list_gpl.asp)) durante por lo menos tres años a partir de la fecha de envío del producto.

También puede solicitar el código fuente llamando a TRENDnet.

20675 Manhattan Place, Torrance, CA 90501, USA. Tel: +1-310-961-5500 Fax: +1-310-961-5511

### Общая информация о лицензиях GPL/LGPL

В состав данного продукта TRENDnet входит бесплатное программное обеспечение, написанное сторонними разработчиками. Это ПО распространяется на условиях лицензий GNU General Public License ("GPL") или GNU Lesser General Public License ("LGPL"). Программы распространяются БЕЗ ГАРАНТИИ и охраняются авторскими правами разработчиков. TRENDnet не оказывает техническую поддержку этого программного обеспечения. Подробное описание лицензий GNU GPL и LGPL можно найти на компакт-диске, прилагаемом к продукту.

В пунктах (<http://www.gnu.org/licenses/gpl.txt>) и (<http://www.gnu.org/licenses/lgpl.txt>) изложены конкретные условия каждой из лицензий.

Исходный код программ доступен для загрузки с веб-сайта TRENDnet ([http://trendnet.com/downloads/list\\_gpl.asp](http://trendnet.com/downloads/list_gpl.asp)) в течение, как минимум, трех лет со дня поставки продукта.

Кроме того, исходный код можно запросить по адресу TRENDnet.

20675 Manhattan Place, Torrance, CA 90501 - U.S.A. -, Tel.: +1-310-961-5500, Fax: +1-310-961-5511

Download from [www.Soft911.com](http://www.Soft911.com) - All Manuals Search And Download.

### **GPL/LGPL informações Gerais**

Este produto TRENDnet inclui software gratuito desenvolvido por terceiros. Estes códigos estão sujeitos ao GPL (GNU General Public License) ou ao LGPL (GNU Lesser General Public License). Estes códigos são distribuídos SEM GARANTIA e estão sujeitos aos direitos autorais dos desenvolvedores. TRENDnet não presta suporte técnico a estes códigos. Os detalhes do GNU GPL e do LGPL estão no CD-ROM do produto.

Favor acessar <http://www.gnu.org/licenses/gpl.txt> ou <http://www.gnu.org/licenses/lgpl.txt> para os termos específicos de cada licença.

Os códigos fonte estão disponíveis para download no site da TRENDnet ([http://trendnet.com/langen/downloads/list\\_gpl.asp](http://trendnet.com/langen/downloads/list_gpl.asp)) por pelo menos três anos da data de embarque do produto.

Você também pode solicitar os códigos fonte contactando TRENDnet, 20675 Manhattan Place, Torrance, CA 90501, USA. Tel: +1-310-961-5500, Fax: +1-310-961-5511.

### **GPL/LGPL üldinformatsioon**

See TRENDneti toode sisaldab vaba tarkvara, mis on kirjutatud kolmanda osapoole poolt. Koodid on allutatud GNU (General Public License) Üldise Avaliku Litsentsi (GPL) või GNU (Lesser General Public License) ("LGPL") Vähem Üldine Avalik Litsentsiga. Koode vahendatakse ILMA GARANTIITA ja need on allutatud arendajate poolt. TRENDnet ei anna koodidele tehnilist tuge. Detailsemat infot GNU GPL ja LGPL kohta leiate toote CD-ROMil. Infot mõlema litsentsi spetsiifiliste terminite kohta leiate (<http://www.gnu.org/licenses/gpl.txt>) või (<http://www.gnu.org/licenses/lgpl.txt>).

Infot mõlema litsentsi spetsiifiliste terminite kohta leiate (<http://www.gnu.org/licenses/gpl.txt>) või (<http://www.gnu.org/licenses/lgpl.txt>). Lähtekoodi on võimalik alla laadida TRENDneti kodulehelt

([http://trendnet.com/langen/downloads/list\\_gpl.asp](http://trendnet.com/langen/downloads/list_gpl.asp)) kolme aasta jooksul alates toote kättesaamise kuupäevast.

Samuti võite lähtekoodi paluda TRENDneti'lt, 20675 Manhattan Place, Torrance, CA 90501, USA. Tel: +1-310-961-5500, Fax: +1-310-961-5511.

## Certifications

This equipment has been tested and found to comply with FCC and CE Rules.

Operation is subject to the following two conditions:

- (1) This device may not cause harmful interference.
- (2) This device must accept any interference received. Including interference that may cause undesired operation.



Waste electrical and electronic products must not be disposed of with household waste. Please recycle where facilities exist. Check with you Local Authority or Retailer for recycling advice.



**NOTE:** THE MANUFACTURER IS NOT RESPONSIBLE FOR ANY RADIO OR TV INTERFERENCE CAUSED BY UNAUTHORIZED MODIFICATIONS TO THIS EQUIPMENT. SUCH MODIFICATIONS COULD VOID THE USER'S AUTHORITY TO OPERATE THE EQUIPMENT.

### ADVERTENCIA

En todos nuestros equipos se mencionan claramente las características del adaptador de alimentación necesario para su funcionamiento. El uso de un adaptador distinto al mencionado puede producir daños físicos y/o daños al equipo conectado. El adaptador de alimentación debe operar con voltaje y frecuencia de la energía eléctrica domiciliar existente en el país o zona de instalación.



## Product Warranty Registration

Please take a moment to register your product online.  
Go to TRENDnet's website at <http://www.trendnet.com/register>

## Free Manuals Download Website

<http://myh66.com>

<http://usermanuals.us>

<http://www.somanuals.com>

<http://www.4manuals.cc>

<http://www.manual-lib.com>

<http://www.404manual.com>

<http://www.luxmanual.com>

<http://aubethermostatmanual.com>

Golf course search by state

<http://golfingnear.com>

Email search by domain

<http://emailbydomain.com>

Auto manuals search

<http://auto.somanuals.com>

TV manuals search

<http://tv.somanuals.com>