



User's Guide

TU2-ETG
V1

Table of Contents

1. Introduction	1
Features	1
Package Contents	1
System Requirements.....	1
LED Status	2
2. Installation	3
Driver Installation	3
Verifying the Driver Installation in Windows	4
Connecting to a Network	4
Configuring Network Settings	5
Windows 7/Vista.....	5
Windows XP/2000.....	5
Mac Driver Installation	7
Mac OS X 10.5.2 ~ 10.6	7
3. Specifications.....	10
Limited Warranty.....	11

1. Introduction

The TU2-ETG is a Gigabit USB network adapter that allows you to instantly connect to a 10/100/1000Mbps network from a USB enabled desktop or laptop. Compliant with USB 2.0 and backwards compatible with the USB 1.0 and 1.1, you can share files and printers and also gain access to broadband Internet to explore valuable resources on the web.

Features

- Compliant with USB 2.0 and 1.1 specifications
- Compliant with IEEE 802.3, 802.3u and 802.3ab standards
- Auto Negotiation & Auto-MDIX RJ-45 Gigabit Port
- Supports both full-duplex and half-duplex operations
- Supports Suspend mode and Hibernate mode to remotely wake-up through link-up or magic packet
- Compatible with Windows 7(32/64-bit), Vista (32/64-Bit), XP(32/64-bit), 2000 and Mac 10.5.2 ~ 10.6
- Powered by USB port. No external power adapter required
- Diagnostic LEDs
- Plug & Play
- 5-year limited warranty

Package Contents

Before installation, please check the items of the package.

- TU2-ETG
- CD-ROM (Driver & User's Guide)
- Multi-Language Quick Installation Guide

System Requirements

- CD-ROM Drive
- USB Port: 2.0 or 1.1
- CPU: 300MHz or above / 800MHz or above (Windows Vista), 1GHz or above (Windows 7)
- Memory: 256 MB RAM or above / 512 MB RAM or above (Windows Vista)
1GB RAM (Windows 7)
- Windows® 7/Vista/XP/2000

LED Status

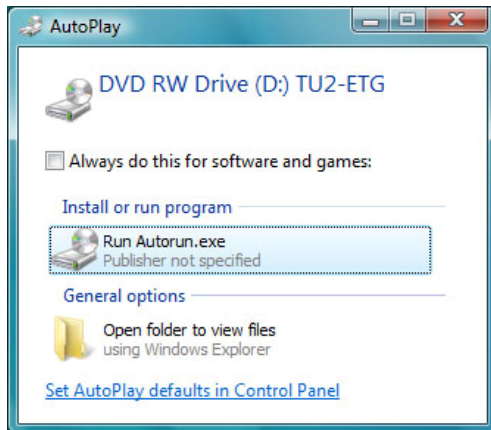
LED	Color	Status	Description
Link	Green	Off	Link is not established.
		On	Link is established.
1000Mbps	Green	Off	Link is not established Link to 10/100Mbps network.
		On	Link to 1000Mbps network.
		Blinking	There is 1000Mbps traffic flow over the network.

2. Installation

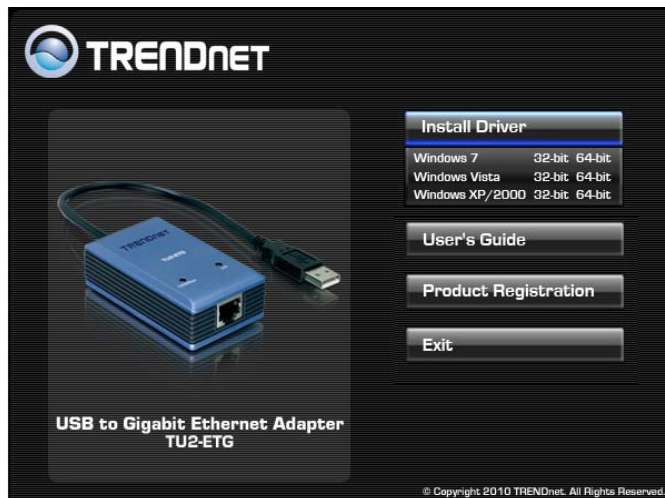
Driver Installation

Note: DO NOT connect the Ethernet adapter to your computer before completing the driver installation.

1. Insert the provided CD into your CD-ROM drive.
2. Click **Run Autorun.exe** (Windows 7/Vista only).



3. Click **Install Driver**. Then click your operating system.



4. Connect the Ethernet adapter's USB end to a free USB port of your computer.
5. Drivers will install automatically.

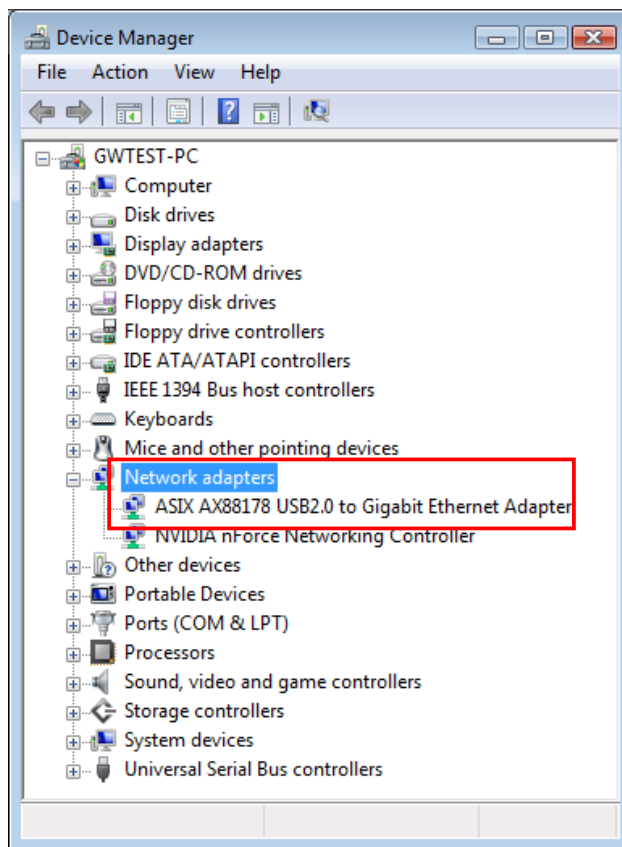
Verifying the Driver Installation in Windows

To verify your Ethernet adapter installation, please launch **Device Manager** by the steps below:

- On Windows 7/Vista: Right-click on the **Computer** icon on the desktop and select **Properties > Device Manager**.
- On Windows XP/2000: Right-click on the My Computer icon on the desktop and select **Properties > System > (Hardware) > Device Manager**.

In the **Network adapters** group, a string similar to **USB2.0 to Gigabit Ethernet Adapter** should be displayed.

If there is a question or exclamation mark next to that item, then the driver is not properly installed. Please delete the item, unplug the adapter and repeat the installation steps.

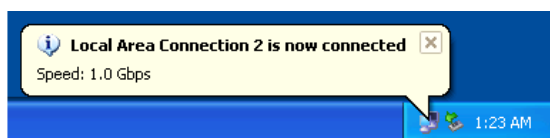


*The example screenshot is taken from Windows Vista.

Connecting to a Network

Now you can connect your network to the device's LAN port. The LAN port supports Auto-MDIX feature. It eliminates the need to use crossover cables.

Upon your connection, a message pops up in the notification area indicating your connection speed.



The adapter's AutoSense feature can automatically detect the network's maximum line speed. To have a 1000Mbps connection, your network device (e.g., switch, router or DSL modem) must also support 1000Mbps.

Configuring Network Settings

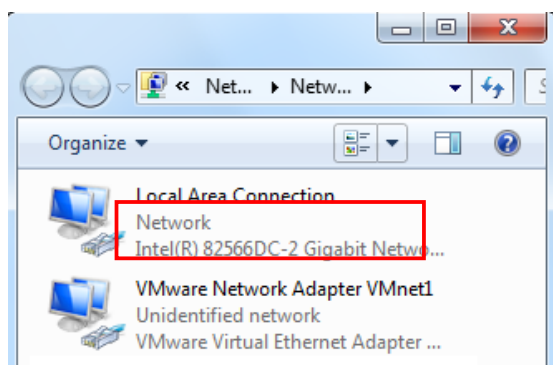
You should configure your Ethernet adapter as required according to your network environment. If you are unsure about the settings, consult your network administrator for assistance. The following describes how to launch the network settings window for your Ethernet adapter.

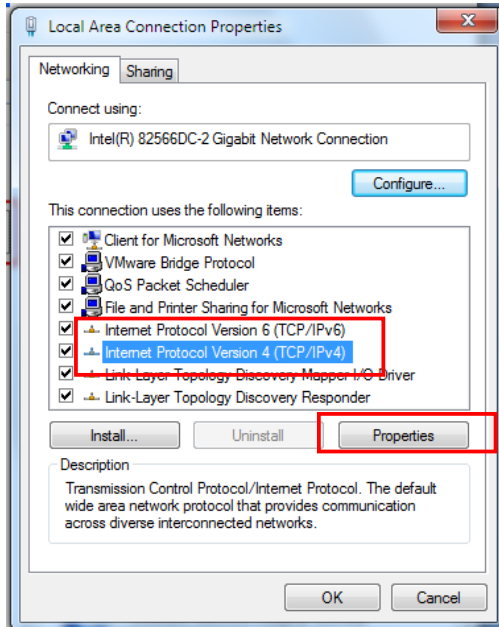
Windows 7/Vista

After the installation, a local area connection icon is automatically created for your Ethernet adapter in the **Network Connections** folder. You can access **Network Connections** folder by selecting **Start > Control Panel > Network and Internet > View Network status and tasks > Management Network Connection** or **Changing Adapter Setting**.

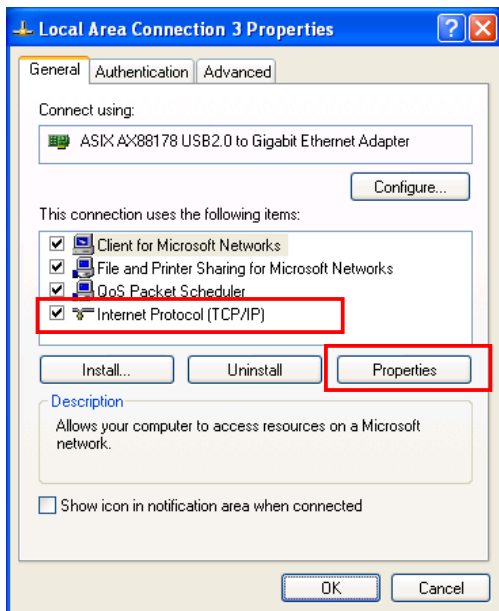
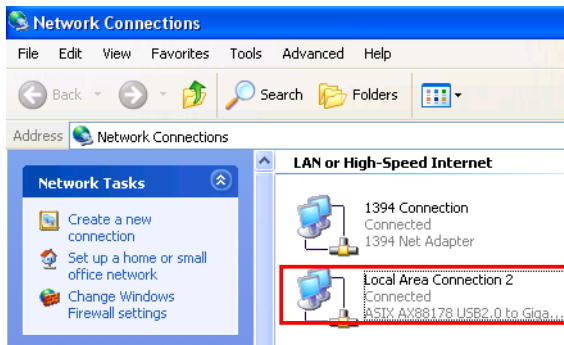
Windows XP/2000

After the installation, a local area connection icon is automatically created for your Ethernet adapter in the **Network Connections** folder. You can access **Network Connections** folder by selecting **Start > Settings > Control Panel > Network and Internet Connections**.





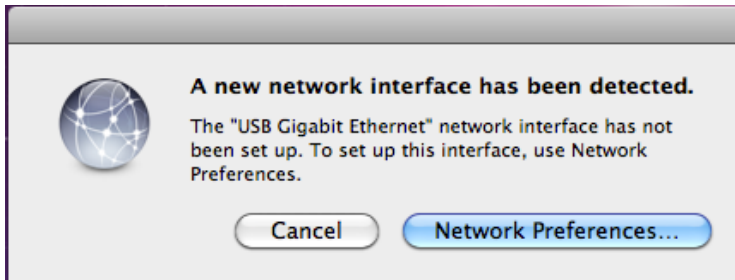
In the **Network Connections** folder, double-click the connection icon for your adapter. Then the **Local Area Connection Properties** window appears.



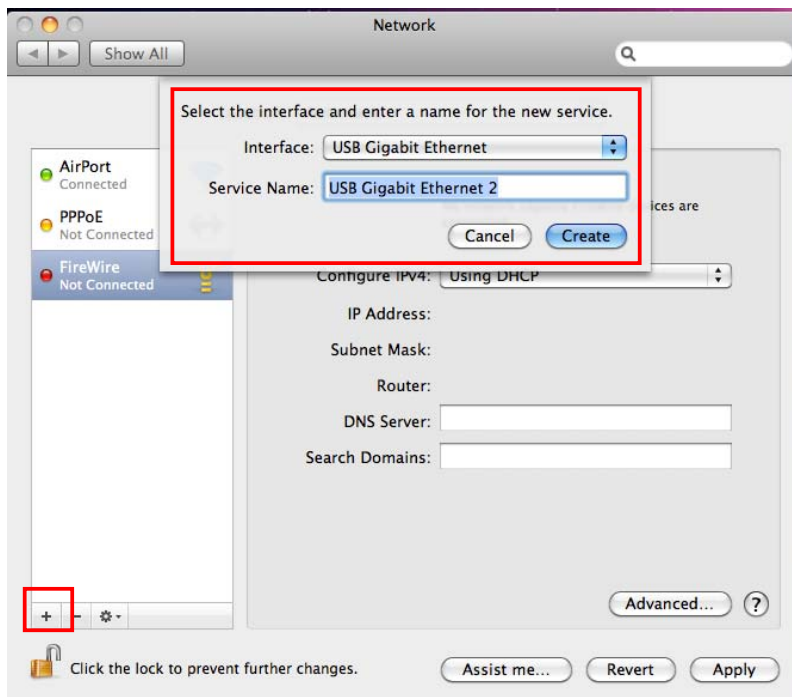
Mac Driver Installation

Mac OS X 10.5.2 ~ 10.6

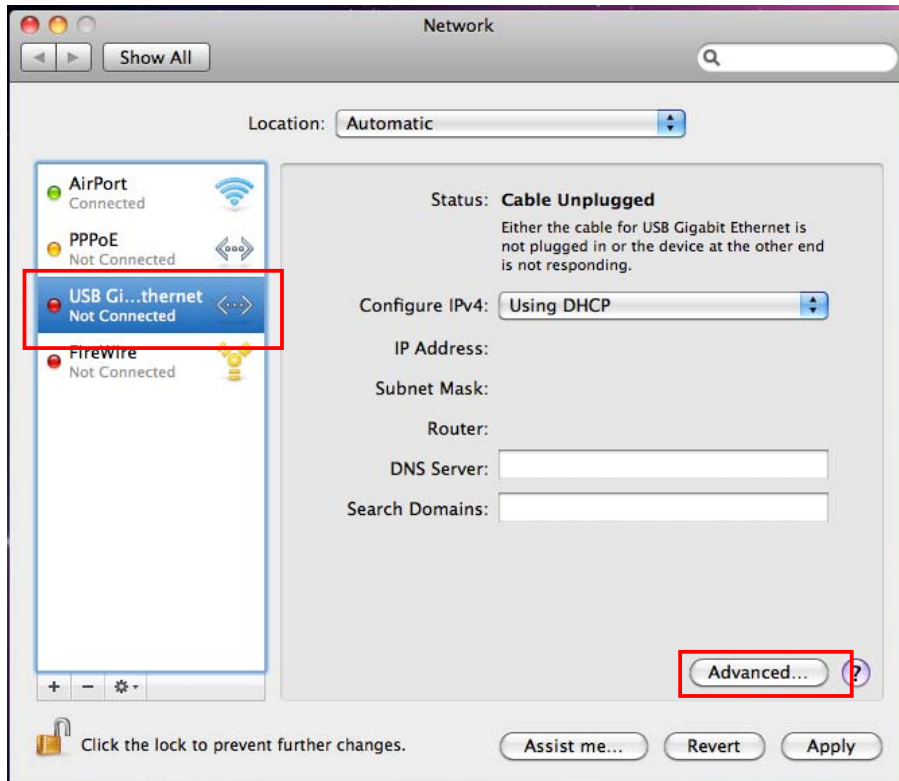
1. Mac has built in driver. Please connect the Ethernet adapter to a free USB port. The system will pop up a message “A new network interface has been detected”



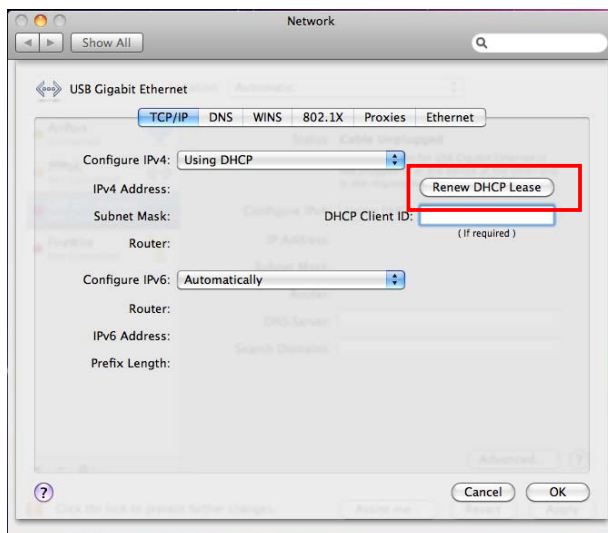
2. If the message is not pop up , please start **System Preferences** and select **Network**, then click the ”+” to add an “**USB Gigabit Ethernet** “ service. Click “**Network Preferences...**” to setup,



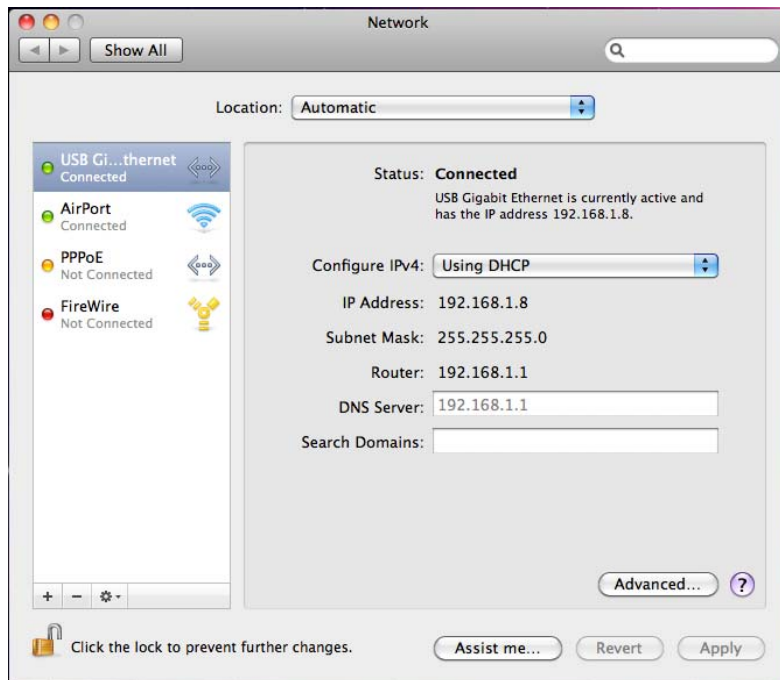
3. Select “**USB Gigabit Ethernet** “ then click “**Advanced**” to setup the network by either using static IP or DHCP.



3. If select "Using DHCP" Mode, please click "**Renew DHCP License**" to get the IP address , Otherwise, please enter the IP information that provided by your Network Service Provider.



4. A new Ethernet network connection is established.



5. To verify the installation, please click open GO > Utilities > System Profile > Hardware > USB > to see if the Ethernet adapter is properly installed.

3. Specifications

Hardware	
Standards	USB 2.0, 1.1 IEEE 802.3: 10Base-T IEEE 802.3u: 100Base-TX IEEE 802.3ab: 1000Base-T
Data Transfer Rate	Ethernet: 10Mbps/20Mbps (Half/Full Duplex) Fast Ethernet: 100Mbps/200Mbps (Half/Full Duplex) Gigabit: 2000Mbps (Full Duplex)
Embedded Buffers	20KB SRAM 20KB SRAM
Supported OS	Windows 7(32/64-bit) / Vista 32/64-bit / XP (32/64-bit), 2000 Mac 10.5.2~10.6
LEDs	Power, Link
Power	Bus-Powered
Power Consumption	950mW
Power Management	Suspend Mode Hibernate Mode
Temperature	Operating: 0° C~ 40° C (32° F~ 104° F) Storage: -10° C~ 55° C (14° F~ 131° F)
Humidity	Max. 85% (Non-Condensing)
Certifications	CE, FCC

Limited Warranty

TRENDnet warrants its products against defects in material and workmanship, under normal use and service, for the following lengths of time from the date of purchase.

TU2-ETG – 3 Years Limited Warranty

AC/DC Power Adapter, Cooling Fan, and Power Supply carry 1 year warranty.

If a product does not operate as warranted during the applicable warranty period, TRENDnet shall reserve the right, at its expense, to repair or replace the defective product or part and deliver an equivalent product or part to the customer. The repair/replacement unit's warranty continues from the original date of purchase. All products that are replaced become the property of TRENDnet. Replacement products may be new or reconditioned. TRENDnet does not issue refunds or credit. Please contact the point-of-purchase for their return policies.

TRENDnet shall not be responsible for any software, firmware, information, or memory data of customer contained in, stored on, or integrated with any products returned to TRENDnet pursuant to any warranty.

There are no user serviceable parts inside the product. Do not remove or attempt to service the product by any unauthorized service center. This warranty is voided if (i) the product has been modified or repaired by any unauthorized service center, (ii) the product was subject to accident, abuse, or improper use (iii) the product was subject to conditions more severe than those specified in the manual.

Warranty service may be obtained by contacting TRENDnet within the applicable warranty period and providing a copy of the dated proof of the purchase. Upon proper submission of required documentation a Return Material Authorization (RMA) number will be issued. An RMA number is required in order to initiate warranty service support for all TRENDnet products. Products that are sent to TRENDnet for RMA service must have the RMA number marked on the outside of return packages and sent to TRENDnet prepaid, insured and packaged appropriately for safe shipment. Customers shipping from outside of the USA and Canada are responsible for return shipping fees. Customers shipping from outside of the USA are responsible for custom charges, including but not

limited to, duty, tax, and other fees.

WARRANTIES EXCLUSIVE: IF THE TRENDNET PRODUCT DOES NOT OPERATE AS WARRANTED ABOVE, THE CUSTOMER'S SOLE REMEDY SHALL BE, AT TRENDNET'S OPTION, REPAIR OR REPLACE. THE FOREGOING WARRANTIES AND REMEDIES ARE EXCLUSIVE AND ARE IN LIEU OF ALL OTHER WARRANTIES, EXPRESSED OR IMPLIED, EITHER IN FACT OR BY OPERATION OF LAW, STATUTORY OR OTHERWISE, INCLUDING WARRANTIES OF MERCHANTABILITY AND FITNESS FOR A PARTICULAR PURPOSE. TRENDNET NEITHER ASSUMES NOR AUTHORIZES ANY OTHER PERSON TO ASSUME FOR IT ANY OTHER LIABILITY IN CONNECTION WITH THE SALE, INSTALLATION MAINTENANCE OR USE OF TRENDNET'S PRODUCTS.

TRENDNET SHALL NOT BE LIABLE UNDER THIS WARRANTY IF ITS TESTING AND EXAMINATION DISCLOSE THAT THE ALLEGED DEFECT IN THE PRODUCT DOES NOT EXIST OR WAS CAUSED BY CUSTOMER'S OR ANY THIRD PERSON'S MISUSE, NEGLIGENCE, IMPROPER INSTALLATION OR TESTING, UNAUTHORIZED ATTEMPTS TO REPAIR OR MODIFY, OR ANY OTHER CAUSE BEYOND THE RANGE OF THE INTENDED USE, OR BY ACCIDENT, FIRE, LIGHTNING, OR OTHER HAZARD.

LIMITATION OF LIABILITY: TO THE FULL EXTENT ALLOWED BY LAW TRENDNET ALSO EXCLUDES FOR ITSELF AND ITS SUPPLIERS ANY LIABILITY, WHETHER BASED IN CONTRACT OR TORT (INCLUDING NEGLIGENCE), FOR INCIDENTAL, CONSEQUENTIAL, INDIRECT, SPECIAL, OR PUNITIVE DAMAGES OF ANY KIND, OR FOR LOSS OF REVENUE OR PROFITS, LOSS OF BUSINESS, LOSS OF INFORMATION OR DATA, OR OTHER FINANCIAL LOSS ARISING OUT OF OR IN CONNECTION WITH THE SALE, INSTALLATION, MAINTENANCE, USE, PERFORMANCE, FAILURE, OR INTERRUPTION OF THE POSSIBILITY OF SUCH DAMAGES, AND LIMITS ITS LIABILITY TO REPAIR, REPLACEMENT, OR REFUND OF THE PURCHASE PRICE PAID, AT TRENDNET'S OPTION. THIS DISCLAIMER OF LIABILITY FOR DAMAGES WILL NOT BE AFFECTED IF ANY REMEDY PROVIDED HEREIN SHALL FAIL OF ITS ESSENTIAL PURPOSE.

Governing Law: This Limited Warranty shall be governed by the laws of the state of California.

Some TRENDnet products include software code written by third party developers. These codes are subject to the GNU General Public License ("GPL") or GNU Lesser General Public License ("LGPL").

Go to <http://www.trendnet.com/gpl> or <http://www.trendnet.com> Download section and look for the desired TRENDnet product to access to the GPL Code or LGPL Code. These codes are distributed WITHOUT WARRANTY and are subject to the copyrights of the developers. TRENDnet does not provide technical support for these codes. Please go to <http://www.gnu.org/licenses/gpl.txt> or <http://www.gnu.org/licenses/lgpl.txt> for specific terms of each license.



TRENDnet[®]

Product Warranty Registration

Please take a moment to register your product online.
Go to TRENDnet's website at <http://www.trendnet.com/register>

Free Manuals Download Website

<http://myh66.com>

<http://usermanuals.us>

<http://www.somanuals.com>

<http://www.4manuals.cc>

<http://www.manual-lib.com>

<http://www.404manual.com>

<http://www.luxmanual.com>

<http://aubethermostatmanual.com>

Golf course search by state

<http://golfingnear.com>

Email search by domain

<http://emailbydomain.com>

Auto manuals search

<http://auto.somanuals.com>

TV manuals search

<http://tv.somanuals.com>