

# TEW-410APBplus

54Mbps 802.11g Wireless Access Point + Bridge  
Quick Installation Guide

Guide d'installation rapide pour le  
Point d'Accès Sans Fil 54Mbps 802.11g + fonction "bridge"

Schnell Anleitung  
54Mbit/s 802.11g Wireless Access Point + Bridge

Guía de Instalación Rápida del  
Base Transmisora Wireless + Bridge 802.11g de 54Mbps

Version 05.26.04



**TRENDnet**<sup>®</sup>  
TRENDware, USA  
**What's Next in Networking**

# Table of Contents

English .....	1
1. Prepare for Installation .....	1
2. Install Hardware .....	2
3. Configure the computer's TCP/IP Settings .....	3
4. Configure the Access Point .....	8
Troubleshooting.....	13

# English QIG

## 1. Prepare for Installation

Thank you for purchasing the TEW-410APBplus. With this Access Point, you will be able to share your files and resources between wired and wireless PCs.

This guide will help you set-up and configure your Access Point. Following the installation instructions should be quick and easy. If you run into problems, please refer to the Troubleshooting section or more detailed information from the User's Guide on the CD-ROM. If you need further technical support, please visit [www.TRENDNET.com](http://www.TRENDNET.com) or contact us by phone.

### Verify Package Contents

Please make sure you have everything in the box:



### Verify Equipment

Before installing the Access Point, you should have:

1. A Hub or Switch connecting your existing network.
2. A working Wired PC connected to the Hub/Switch or a working Wireless PC.
3. A web browser such as Internet Explorer (5.0 or higher) or Netscape Navigator (4.7 or higher).
4. TCP/IP protocol installed on each computer.

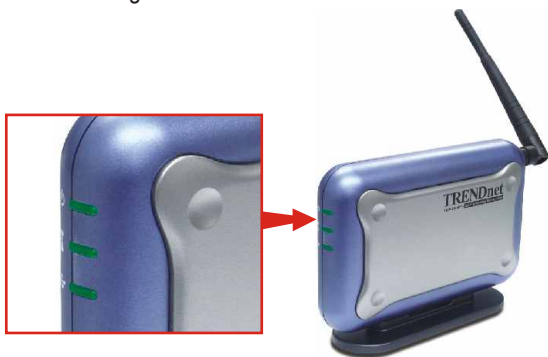
## 2. Install Hardware

1. Connect the RJ-45 network cable from the Access Point to any port on the Hub or Switch.
2. For Wired PC setup, please connect another RJ-45 network cable from the PC to the same Hub or Switch.
3. Connect the AC Power Adapter to the Access Point and to an available power outlet. Turn on the Access Point.



### Verify Hardware Installation

Verify that the following Access Point LEDs are on.

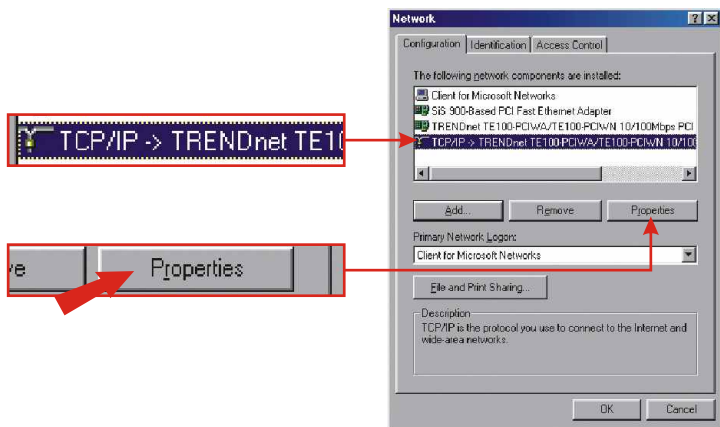


### 3. Configure the computer's TCP/IP Settings

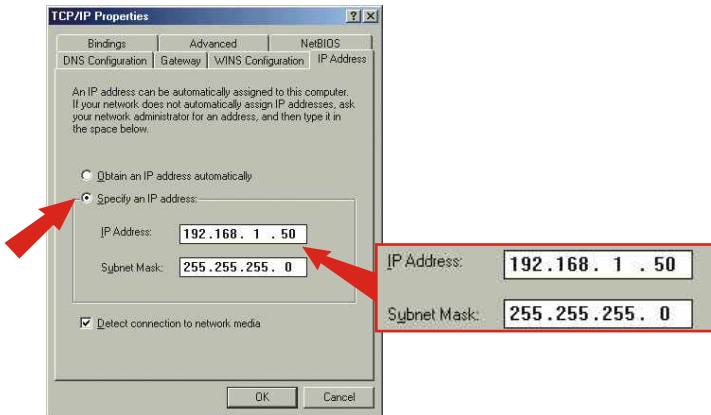
The Access Point has a default IP address 192.168.1.250, therefore to be able to access and configure the Access Point, the computer's TCP/IP settings need to be changed.

#### Windows 95/98/98SE/ME

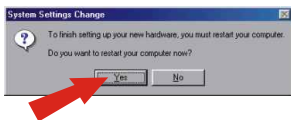
1. Find the **Start** button located on Desktop.
2. Click **Start**; click **Settings** and then click on **Control Panel**.
3. Double-Click the **Network** Icon and the Network Properties box will appear.
4. Under the Configuration tab, locate and select **TCP/IP** with the corresponding network card. Then click on the Properties button and the TCP/IP Properties window will appear.



5. Under the **IP Address** tab, select **Specify an IP address** and enter “192.168.1.50” for the IP address and “255.255.255.0” for the Subnet Mask. Then, click **OK**.



6. Click **OK**.
7. At this point, the installation may require files from your Windows CD-ROM. If this happens insert Windows CD-ROM into your CD-ROM drive and select the **CD-ROM drive** to load the necessary files.
8. After the files load, the System Settings Change prompt will appear; click **Yes** to restart your computer.

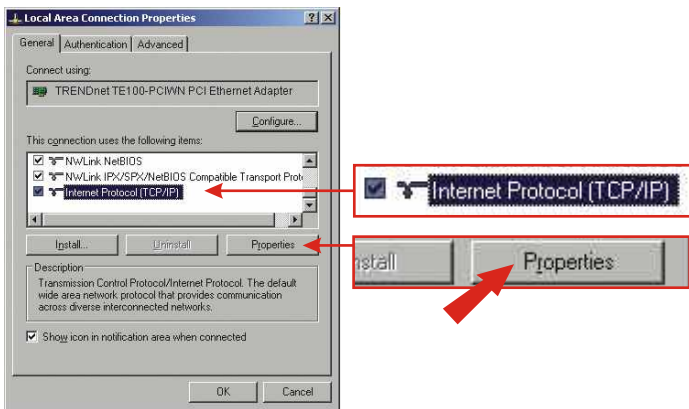


**NOTE:** If this prompt does not appear, you must manually restart your computer.

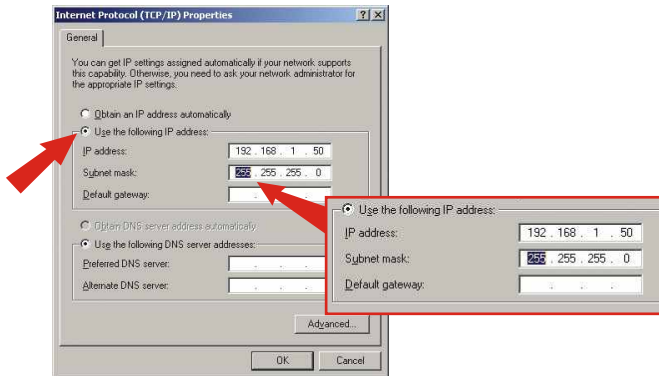
9. Your computer is now ready to access and configure the Access Point.

## Windows 2000/XP

1. Find **Start** button located on Desktop.
2. Click **Start**; click **Settings** and then click on **Control Panel**.
3. Double-Click the **Network Connection** Icon.
4. Right-Click on the **Local Area Connection** icon and then click on **Properties**. The Local Area Connection Properties box will appear.



5. Under the **General** tab, locate and select Internet Protocol TCP/IP and then click **Properties**. The Internet Protocol (TCP/IP) Properties box will appear.

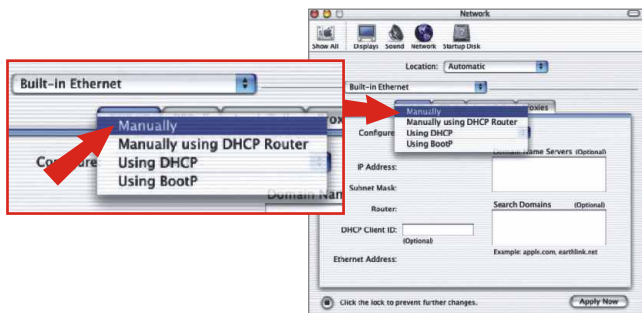


6. Click on **Use the following IP address**; then enter 192.168.1.50 for IP Address and 255.255.255.0 for Subnet, then click **OK**.
7. Click **OK** on the Local Area Connection Properties box to close it.
8. Your computer is now ready to access and configure the Access Point.

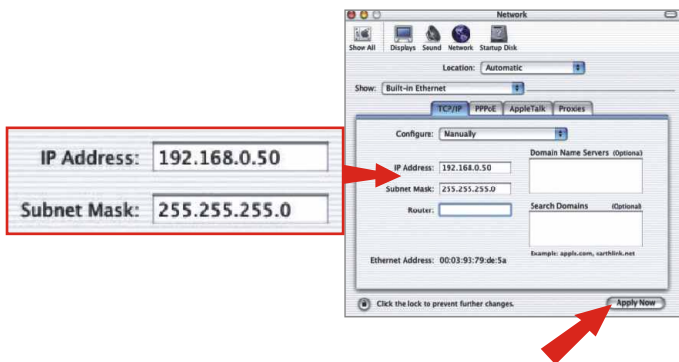


## Mac OS X

1. Go to the Apple Menu, click **Network** and select **System Preferences**.
2. Select **Built in Ethernet** in the Show pull-down menu and select **Manually** in the configuration pull-down menu.



3. Input a valid IP address and subnet mask. (The IP address must be within the same range as the TEW-410APBplus. The IP Address of the TEW-410APBplus is 192.168.1.250 so you can assign 192.168.1.50 and 255.255.255.0 as subnet mask)
4. Click **Apply Now** and continue to the Configuration section.

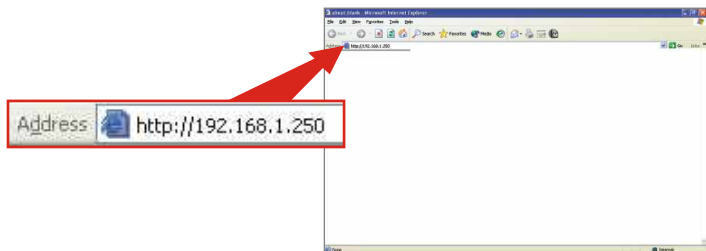


## 4. Configure the Access Point

The following set-up information is designed to help you to configure the Access Point to work with your existing Wired or Wireless network.

### From a Wired PC

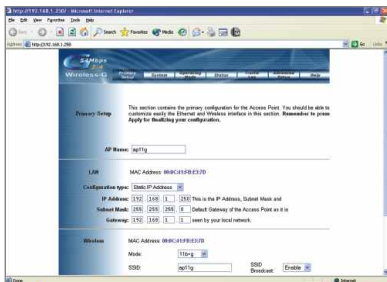
1. Open your Web browser and type **http://192.168.1.250** into the Address box and press the **Enter** key.



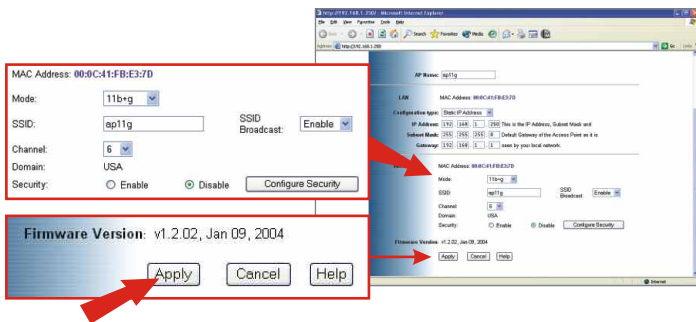
2. The logon pop-up screen will appear, type **admin** for the username and **admin** for the password then click **OK** to access the configuration page.



3. The configuration page will appear, then you can make changes on the Access Point to match your existing network's settings such as IP address and Subnet Mask.



4. Scroll down the page to the Wireless section. If you already have a wireless network, change the SSID/Channel and Encryption settings to match your wireless network's settings.

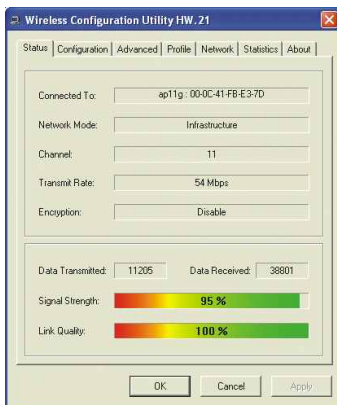


5. After you've made the changes, click the **Apply** button to save the settings. The Access Point is now configured and ready to use with your network.

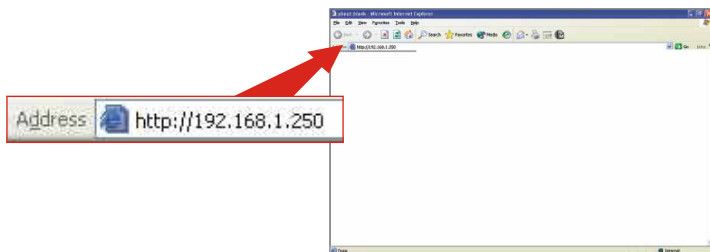
**NOTE:** If you cannot access the configuration page, please check your TCP/IP settings again. To find out more information on the Access Point features, please go through the User's Guide on the CD-ROM.

## From a Wireless PC

1. Open up the Utility Program for your wireless card.
2. Configure the wireless card to have the SSID as **ap11g** and Channel as **6** and click on Connect to connect to the Access Point. (Example uses TRENDnet's TEW-421PC 802.11g Wireless PC Card).



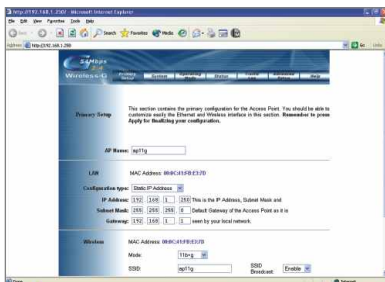
3. Open your Web browser, type **http://192.168.1.250** in the Address bar, and press the **Enter** key.



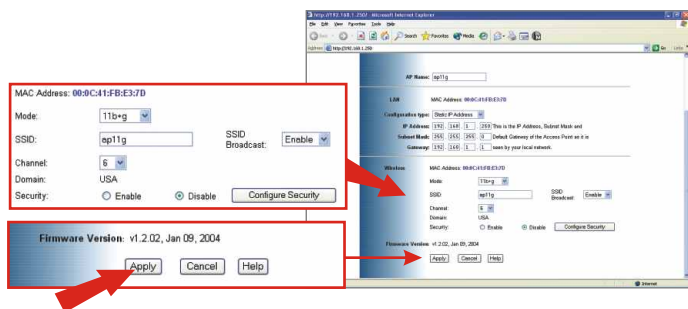
4. The logon pop-up screen will appear, type **admin** for the username and **admin** for the password then click **OK** to access the configuration page.



5. The configuration page will appear. Make changes to your Access Point's settings so that it matches your existing network settings. This may entail changing the IP Address and Subnet Mask. Please refer to the User's Guide on the CD-ROM if you encounter problems.



6. Scroll down the page to the Wireless section. If you already have a wireless network, change the SSID/Channel or Encryption to match your wireless network's settings.



7. After you've made the changes, click the **Apply** button to save the settings. The Access Point is now configured and ready to use with your network.

**NOTE:** If you cannot access the configuration page, please check your TCP/IP settings again. To learn more about the Access Point's features, please refer to the User's Guide on the included CD-ROM.

### Important:

If you have a DHCP server in your network and all your client PCs require dynamic IP settings, return to the TCP/IP Properties box and re-select the **Obtain an IP address automatically** option. Reboot the PC, and the computer will receive a new IP address from your network.

# Troubleshooting

For help with advanced features, refer to the User's Guide located on the included CD-ROM.

## **Q1. The Access Point will not turn on. None of the LEDs light up.**

**A1.** Connect the power adapter to the power outlet and check the LEDs again. Also, verify that you are using the power adapter shipped with this product; using the wrong power adapter might physically damage the unit.

## **Q2. I cannot get to the configuration page of the TEW-410APBplus.**

**A2.** Verify that your computer has a compatible IP address within the range of 192.168.1.x. You can also use the reset button located on the rear of the Access Point to revert to the default settings. Then, try to connect to the Access Point again.

## **Q3. I cannot connect my wireless PCs to my network.**

**A3.** Please verify that the TEW-410APBplus has a valid IP Address/Subnet Mask that matches your existing network's IP Address/Subnet Mask. If you have a DHCP server in your network, configure all the wireless PCs to "**Obtain IP Address automatically.**" (in TCP/IP protocol properties box)

**NOTE:** For more detailed information about the TEW-410APBplus' configuration and advanced settings, refer to the User's Guide on the included CD-ROM.

If you still encounter problems while setting up the router, we can help. Please have your Internet account information ready, (ISP, Account Type) and contact us using the information indicated below.

### **Contact Technical Support**

Telephone: +1-310-626-6252  
Fax: +1-310-626-6267  
Website: [www.TRENDNET.com](http://www.TRENDNET.com)  
E-mail: [support@trendware.com](mailto:support@trendware.com)

### **Technical Support Hours**

7:00AM ~ 6:00PM, Monday through Friday  
Pacific Standard Time (except holidays)

### **Certifications**

This equipment has been tested and found to comply with FCC and CE Rules.

Operation is subject to the following two conditions:

- (1) This device may not cause harmful interference.
- (2) This device must accept any interference received, including interference that may cause undesired operation.





## Product Warranty Registration

Please take a moment to register your product online.  
Go to TRENDware's website at <http://www.TRENDNET.com>

**TRENDware International, Inc.**  
3135 Kashiwa Street  
Torrance, CA 90505

**<http://www.TRENDNET.com>**



## Free Manuals Download Website

<http://myh66.com>

<http://usermanuals.us>

<http://www.somanuals.com>

<http://www.4manuals.cc>

<http://www.manual-lib.com>

<http://www.404manual.com>

<http://www.luxmanual.com>

<http://aubethermostatmanual.com>

Golf course search by state

<http://golfingnear.com>

Email search by domain

<http://emailbydomain.com>

Auto manuals search

<http://auto.somanuals.com>

TV manuals search

<http://tv.somanuals.com>