



## Quick Installation Guide



**TEW-MP1U**

# Table of Contents

English .....	1
1. Before You Start .....	1
2. How to Install .....	2
3. Configure the Print Server .....	3
4. Printing .....	7
5. Faxing .....	8
6. Scanning .....	9
Troubleshooting .....	10

# 1. Before You Start



## Package Contents

- TEW-MP1U
- Quick Installation Guide
- Utility CD-ROM
- Power Adapter (12V, 1A)

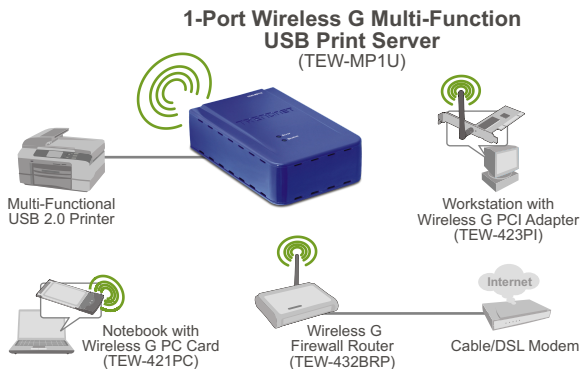
## System Requirements

- CD-ROM Drive
- CPU: 300Mhz or above/ 800Mhz or above (Windows Vista)
- Memory: 256MB RAM or above/ 512MB RAM or above (Window Vista)
- Windows 2000/XP/2003 Server/Vista (32bit)

### Note:

1. Do not perform the following unless instructed to do so:
  1. Install the utility
  2. Connect printer to printer server
  3. Connect computer to Print Server
2. The utility must be installed on each computer in order to use your multi-function printer.

## Application



## 2. How to install

1. Install the printer drivers to your computer. Then shutdown the printer and disconnect the printer from your computer.

Note: Please refer to your printer's manual for printer installation instructions.

2. Connect the **Power Adapter** to the Print Server and then to a power outlet.

3. Connect a RJ-45 network cable from a Switch/Router to the **LAN** port of the Print Server.

4. Connect the USB Printer to the **USB** port of the Print Server.

5. Power **ON** printer.

6. Verify that the **Status** LED is lit on the Print Server.

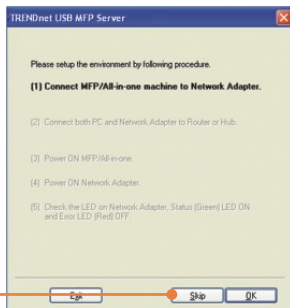


# 3. Configure the Print Server

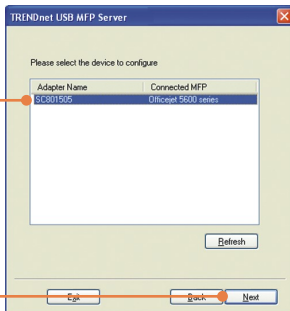
1. Insert the Utility CD-ROM into your CD-ROM driver. Then click **Setup Wizard**.



2. Click **Skip**.



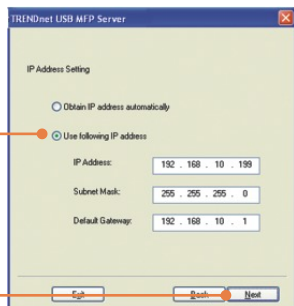
3. Select the print server and then click **Next**.



4. Choose a wireless network to connect to and then click **Next**.



5. Configure the IP address of the print server to be in the same subnet as your network and then click **Next**.



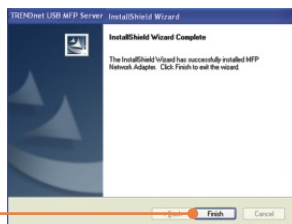
6. Click **Finish**.



7. Click **Yes**.



8. Follow the **InstallShield Wizard** instructions and then click **Finish**.



9. Click on **Resource** and then click **Connect**.



10. The printer driver wizard appears. Follow the printer driver wizard to install the printer.

11. Click **OK**.



## **Print Server configuration is now complete.**

For detailed information regarding the TEW-MP1U configuration and advanced settings, please refer to the User's Guide on the Utility CD-ROM or TRENDnet's website at [www.trendnet.com](http://www.trendnet.com)

### **Register Your Product**

To ensure the highest level of customer service and support, please take a moment to register your product Online at: [www.TRENDnet.com/register](http://www.TRENDnet.com/register)

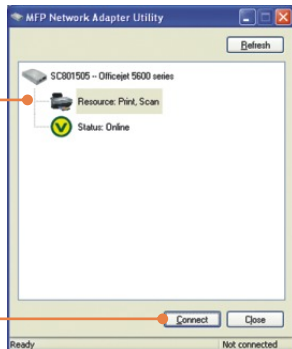
Thank you for choosing TRENDnet



## 4. Printing

Note: Only one user can use the print server at a time. Once a user has finished using the print server, another user can use it.

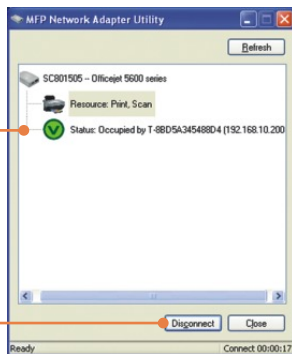
1. Click on **Resource** and then click **Connect**.



2. Status will now show the client computer and IP address that is currently using the printer.

3. User can now start printing.

4. Click **Disconnect**.



## 5. Faxing

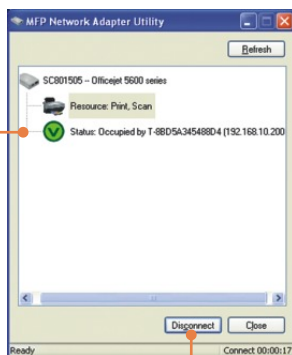
Note: Only one user can use the print server at a time. Once a user has finished using the print server, another user can use it.

1. Click on **Resource** and then click **Connect**.



2. Status will now show the client computer and IP address that is currently using the printer.

3. User can now start Faxing. Follow the Multifunction printer software instructions for faxing.

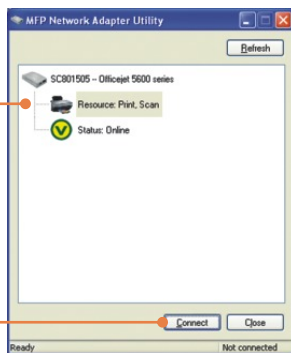


4. Click **Disconnect**.

## 6. Scanning

Note: Only one user can use the print server at a time. Once a user has finished using the print server, another user can use it.

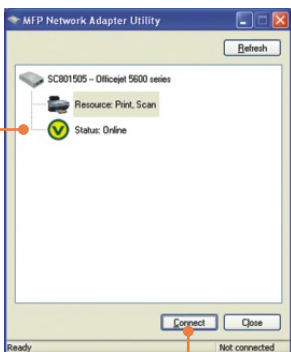
1. Click on **Resource** and then click **Connect**.



2. Status will now show the client computer and IP address that is currently using the printer.

3. Place the document on the Multi-Function Printer's Scanner bed. Then follow the Multifunction printer software instructions for scanning.

4. Click **Disconnect**.



**Q1. The setup wizard/utility does not detect the Print Server and/or printer/storage device. What should I do?**

**A1.** First, double check your hardware connections; make sure that the Print Server and printer are powered ON and are properly connected. Make sure the RJ-45 network cable is securely connected to the Print Server and Switch/Router. Second, disable any software firewall programs such as ZoneAlarm or Norton Internet Security. If your computer is running Windows XP or Vista, disable the built-in firewall. Third, click **Refresh**. Fourth, power cycle the Print Server. Unplug the power to the Print Server, wait 15 seconds, then plug the Print Server back in.

**Q2. The setup wizard/utility does not detect my printer device. What should I do?**

**A2.** First, make sure the printer is powered on and properly connected to the Print Server. Second, connect the printer with another USB cable. Third, reset the print server. Take a pin or paperclip and press the reset button on the print server for 15 seconds, then let go.

**Q3. I am unable to print to my print server. What should I do?**

**A3.** First, make sure you follow the exact steps for installing the Print Server in section 2. Second, make sure to right click on the print server in the utility and click connect. If another user is using the print server, you must wait until the user is finished using it. Third, if you are connected to the print server and are idled for a couple of minutes, a warning message appears. If you do not respond within a minute, you will be automatically disconnected from the print server. You must connect to the print server again.

**Q4. I can print a test page, but I cannot print anything from Microsoft Word or other applications.**

**A4.** Make sure to set the newly installed network printer as your default printer. Click Start and then click Printers & Faxes, verify that your printer icon has a check on it.

**Q5. I configured my print server to automatically receive an IP Address from a DHCP server, and now I cannot go into the print server's web utility.**

**A5.** Open the Print Server Set Up Wizard (See 3. Configure the Print Server) to locate your print server's IP Address.

**Q6. Is there a way to force a computer to give up ownership of the print server?**

**A6.** If the user has been idled for a few minutes, the user will be automatically disconnected.

**Q7. After I successfully configured the TEW-MP1U to match my wireless network settings, I can not print through the Print Server.**

**A7.** First, verify that the wireless settings match your wireless network settings. Second, after configuring your wireless network settings, make sure to unplug the power to the Print Server, disconnect the Ethernet cable from the Print Server, wait 15 seconds, then plug the Print Server back in. Third, verify that the WLAN LED on the Print Server is lit. Fourth, if you have enabled encryption on your wireless network, find out the type of encryption (e.g. WEP, WPA-PSK) and encryption key. Then open up the setup wizard, connect to the desired wireless network and enter the encryption key.

If you still encounter problems or have any questions regarding the TEW-MP1U, please refer to the User's Guide included on the Utility CD-ROM or contact TRENDnet's Technical Support Department.

## Certifications

This equipment has been tested and found to comply with FCC and CE Rules. Operation is subject to the following two conditions:

- (1) This device may not cause harmful interference.
- (2) This device must accept any interference received. Including interference that may cause undesired operation.



Waste electrical and electronic products must not be disposed of with household waste. Please recycle where facilities exist. Check with you Local Authority or Retailer for recycling advice.



**NOTE:** THE MANUFACTURER IS NOT RESPONSIBLE FOR ANY RADIO OR TV INTERFERENCE CAUSED BY UNAUTHORIZED MODIFICATIONS TO THIS EQUIPMENT. SUCH MODIFICATIONS COULD VOID THE USER'S AUTHORITY TO OPERATE THE EQUIPMENT.

### ADVERTENCIA

En todos nuestros equipos se mencionan claramente las características del adaptador de alimentación necesario para su funcionamiento. El uso de un adaptador distinto al mencionado puede producir daños físicos y/o daños al equipo conectado. El adaptador de alimentación debe operar con voltaje y frecuencia de la energía eléctrica domiciliar existente en el país o zona de instalación.



# TRENDnet<sup>®</sup>

## TRENDnet Technical Support

### US • Canada

**Toll Free Telephone:** 1(866) 845-3673

24/7 Tech Support



### Europe (Germany • France • Italy • Spain • Switzerland UK)

**Toll Free Telephone:** +00800 60 76 76 67

English/Espanol - 24/7

Francais/Deutsch - 11am-8pm, Monday - Friday MET

### Worldwide

**Telephone:** +(31) (0) 20 504 05 35

English/Espanol - 24/7

Francais/Deutsch - 11am-8pm, Monday - Friday MET

## Product Warranty Registration

Please take a moment to register your product online.

Go to TRENDnet's website at <http://www.trendnet.com/register>

# TRENDnet<sup>®</sup>

20675 Manhattan Place  
Torrance, CA 90501  
USA

## Free Manuals Download Website

<http://myh66.com>

<http://usermanuals.us>

<http://www.somanuals.com>

<http://www.4manuals.cc>

<http://www.manual-lib.com>

<http://www.404manual.com>

<http://www.luxmanual.com>

<http://aubethermostatmanual.com>

Golf course search by state

<http://golfingnear.com>

Email search by domain

<http://emailbydomain.com>

Auto manuals search

<http://auto.somanuals.com>

TV manuals search

<http://tv.somanuals.com>