

Quick Installation Guide



- **11Mbps Wireless Print Server with 1 Parallel Printer Port**
- **11Mbps Wireless Print Server with 1 USB Printer Port**



Copyright © TRENDware International, Inc. 2003. All Rights Reserved

TEW-P1P/TEW-P1U Quick Installation Guide

1. Print Server Layout

TEW-P1P

(IEEE 1284 Parallel Connector)



TEW-P1U

(USB Connector)



Back Side



1. Reset Button
2. Status LED (Orange)
3. WLAN LED (Green)
4. DIP Switch

Nor- Normal Mode (Infrastructure)

Diag-Diagnostics Mode (Ad-hoc)

5. Connector for Power Adapter

Before you start the installation, you will need

- One Parallel or USB printer
- One computer with Windows Operating System and 802.11b compliant wireless adapter
- One 802.11b Wireless Access Point (for Infrastructure wireless mode)



This Quick Installation Guide contains brief instructions of the followings:

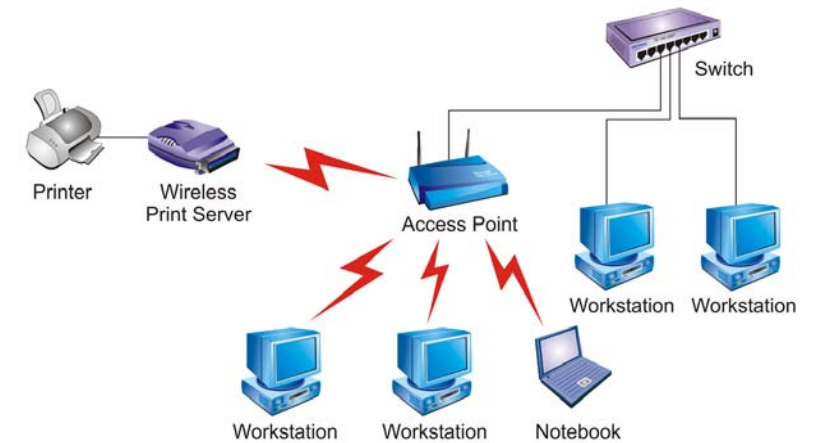
- Print Server Installation & Setup
- Network Printer Setup for Windows 95/98/Me/NT/2000/XP

For Unix, Netware and Mac. (Apple) environments, please refer to the User's Guide in the Manual folder on the CD-ROM.

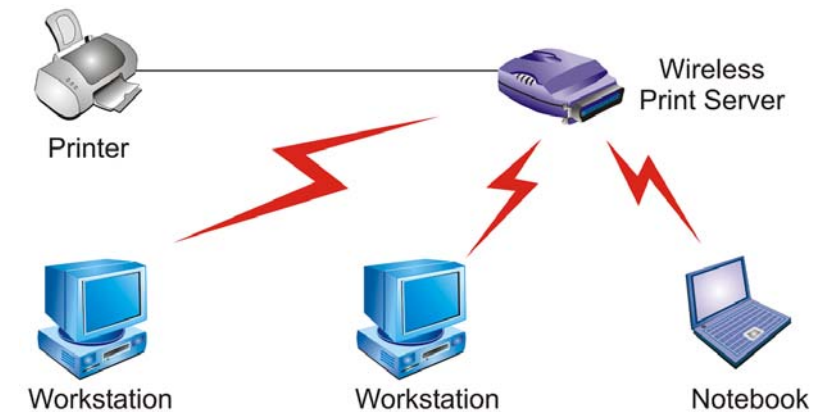
Page 1

2. Wireless Network Environments

Infrastructure (AP) Mode



Ad-hoc (Peer-to-Peer) Mode



Page 2

3. Hardware Installation

1. Power off the Print Server and Printer.
2. Connect the Print Server's printer port (USB or Parallel) to the printer.
3. Plug the AC power adapter into the power connector on the back of the print server.

Note:

When the print server is powered on, the status indicator should flash 5 times and then turn solid. If your print server does not do this, please contact your local dealer for repair or replacement.

4. Power on the printer.
5. Hardware Installation Completed.

Wireless Installation Procedures

Ad-Hoc Mode (Peer-to-Peer):

- Switch the Print Server's DIP switch to **DIAG** mode.
- Check on the Computer's and see if TCP/IP protocol (for the wireless adapter) is installed and an IP address assigned to the wireless adapter. For example: IP address: 192.168.1.100, subnet: 255.255.255.0.
- Run the utility of your wireless adapter and set it to **Ad-hoc (Peer-To-Peer)** mode.
- Set the wireless adapter's **SSID** to **WLAN-PS**, wireless **channel** to **6**, and disable **WEP** (or use Site Survey tool to connect to the unit).
- Run the **Wireless Setup Wizard** and refer to the **Software Installation** step 2 ~ 14 (page 4) to configure your wireless printer to meet your wireless network environment.
- Run **Network Print Server Wizard** and refer to the **Printer Installation** step 1 to 7(page 10).
- Done

Infrastructure Mode:

- Switch the Print Server's DIP switch to **DIAG** mode.
- Check on the Computer's and see if TCP/IP protocol (for the wireless adapter) is installed and an IP address assigned to the wireless adapter. For example: IP address: 192.168.1.100, subnet: 255.255.255.0.
- Run the utility of your wireless adapter and set it to **Ad-hoc (Peer-To-Peer)** mode.
- Set the wireless adapter's **SSID** to **WLAN-PS**, wireless **channel** to **6**, and disable **WEP** (or use Site Survey tool to connect to the unit).
- Run the **Wireless Setup Wizard** and refer to the **Software Installation** step 2 ~ 14 (page 4) to configure your wireless printer to meet your wireless network environment.
- Switch the DIP back to **Normal** mode
- Configure your wireless adapter and connect it back to your Access Point
- Run **Network Print Server Wizard** and refer to the **Printer Installation** step 1 to 7(page 10).
- Done.

4. Software Installation (For Win95/98/ME/NT/2000/XP)

Wireless Installation

1. Insert the Utility CD into your CD-ROM.
2. The **Autorun** program starts and the following window appears.
If the setup program does not start automatically, run Autorun.exe in the root folder from the CD-Rom.

- Choose **Install Setup Utility**, the program will automatically install the **Setup Wizard** into your computer.

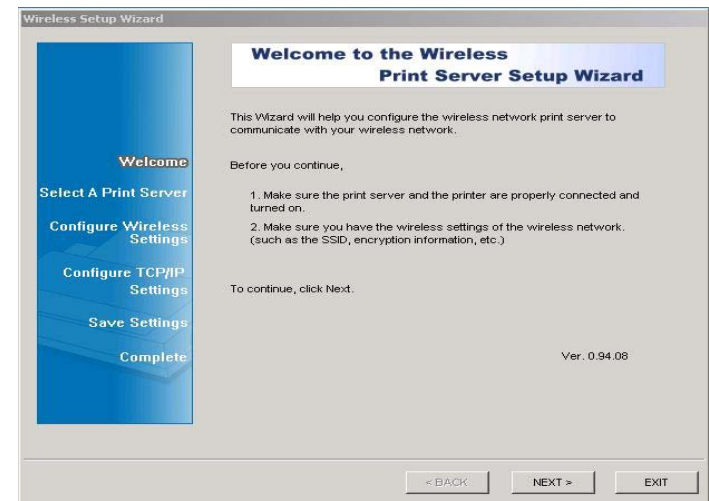


- After the installation completes, the Setup Wizard window would appear, Click on **Wireless Setup Wizard** to configure Wireless settings.

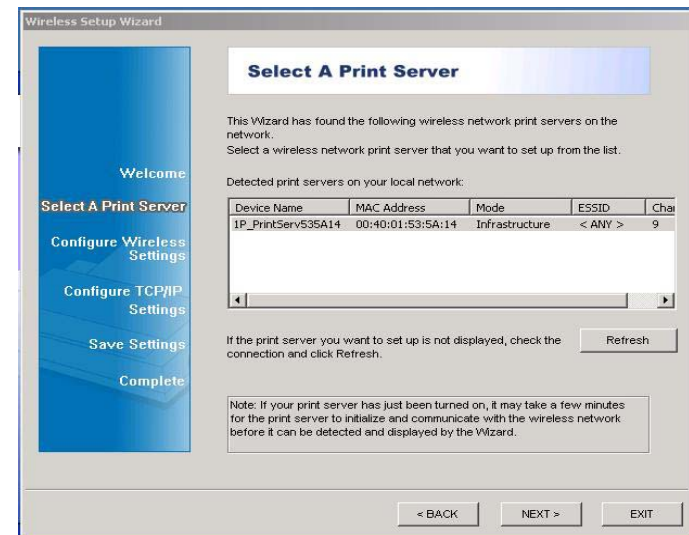


In the future, you can go to Start → Program → Network Print Server → SetupWizard to run the program again

- Click **NEXT**, the wizard will automatically discover the wireless print server, if it can not be found, try rescan.



- The Print Server will appear in the list, select the print server you want to configure and click **NEXT**.



7. Select **YES** if you want to change the configuration and press **NEXT** to continue.

8. Configure the Wireless Settings here to match your Network environment

Ad-Hoc: Type: Ad-Hoc, SSID/Channel: Match other wireless devices.

Infrastructure: Type: Infrastructure, SSID/Channel: Match Access Point.

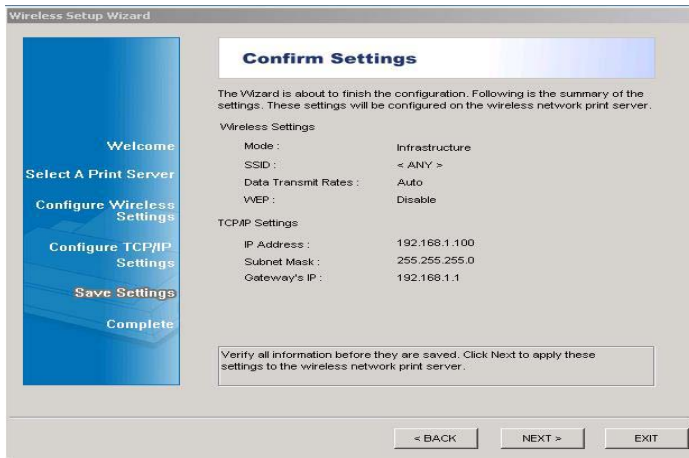
9. Choose Enable the WEP Encryption as you need, and click **NEXT**. The default value is **Disabled**.

10. Specify a fixed IP address or use dynamic IP address, then click **NEXT**.

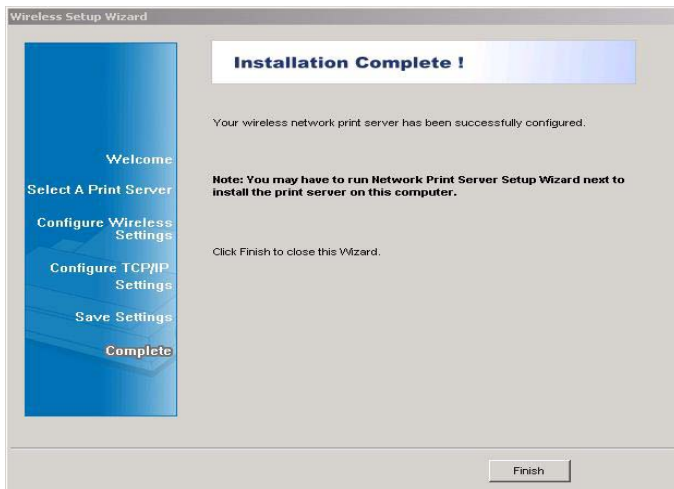
Note:

For TCP/IP printing environment, fix IP address is recommended. IP Address should match your network IP settings.

11. In this page, you can confirm your settings again. Click **NEXT**.



12. Wireless Configurations Complete.

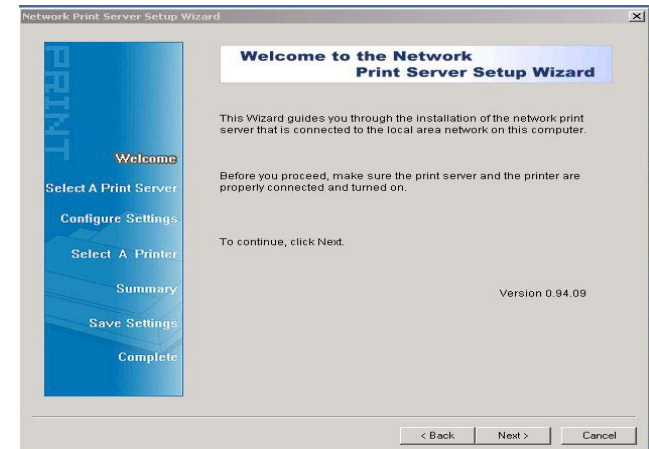


Printer Installation

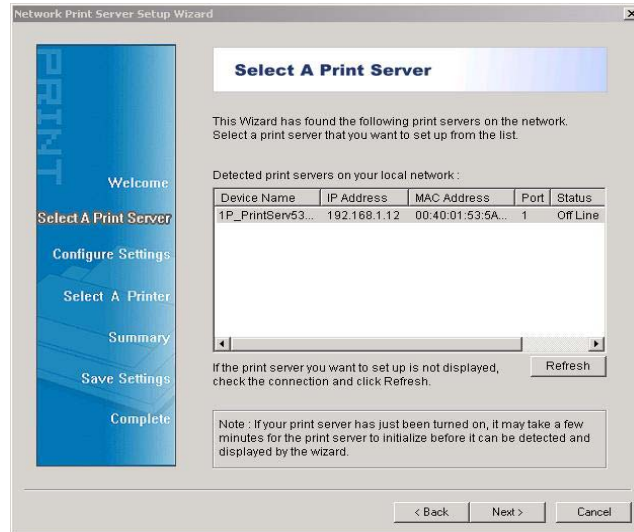
1. Go back to Setup Wizard and select **Network Print Server Setup**



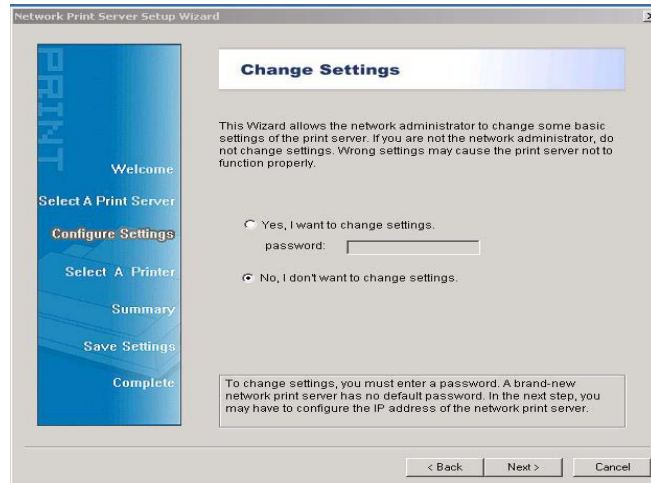
2. Click the **Network Print Server Setup Wizard** and the following window appears.



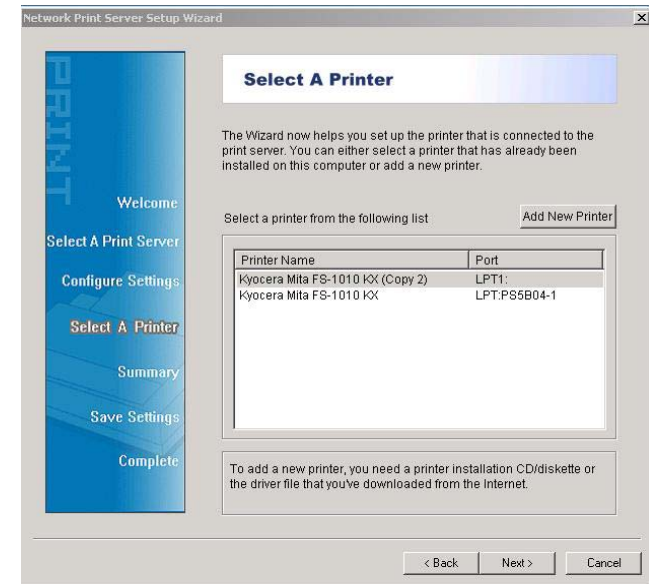
3. Click **Next** and the program will discover your wireless print server.



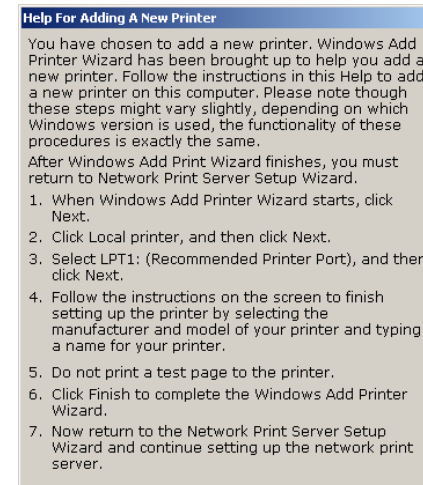
4. Select the print server which you want to configure and press **NEXT**.



5. Click **Next** and choose the printer you want to install.

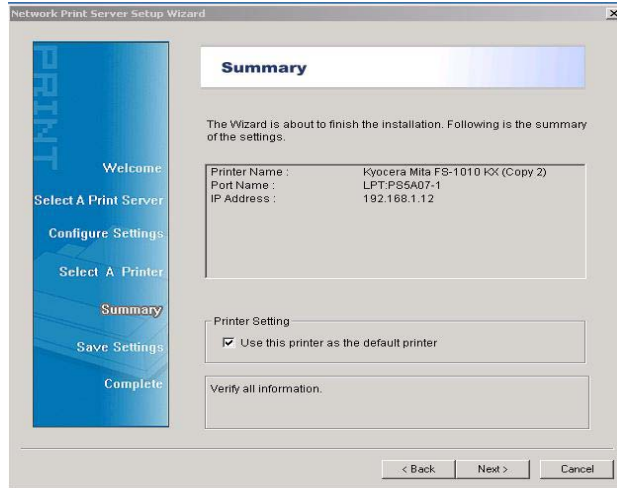


If the printer is not listed under Printer Name, click on Add New Printer and follow the below instruction.

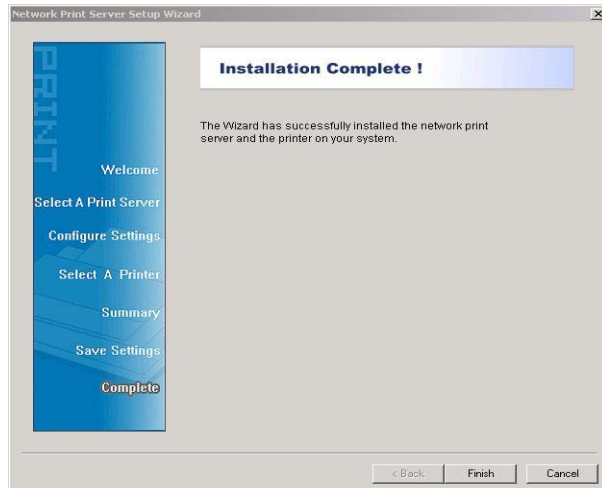


After new printer is added, it will be listed under the Print Name section, select the printer you want to install and click **NEXT**.

6. Click **Next** and setup program will display the summary of your printer's configuration.



7. Click **Finish** to complete the printer installation



Diagnostic

If you don't have an Access Point in your network or the print server cannot be discovered in Infrastructure Mode, please refer to the following steps

1. Switch the Print Server's DIP switch to **DIAG** mode.
2. Check on the Computer's and see if TCP/IP protocol (for the wireless adapter) is installed and an IP address assigned to the wireless adapter. For example: IP address: 192.168.1.100, subnet: 255.255.255.0.
3. Run the utility of your wireless adapter and set it to **Ad-hoc (Peer-To-Peer)** mode.
4. Set the wireless adapter's **SSID** to **WLAN-PS**, wireless **channel** to **6**, and disable **WEP**.
5. Run the **Wireless Setup Wizard** and refer to the **Software Installation** step 2 ~ 14 (page 3) to configure your wireless printer to meet your wireless network environment.
6. Switch the DIP back to **Normal** mode and adjust your wireless adapter configuration.
7. Run **Network Print Server Wizard** and refer to the **Printer Installation** step 1 to 7.
8. Done.

Technical Support

You can find the most recent software and user documentation on the **TRENDware website**. TRENDware provides **free technical support** for all customers for the duration of the warranty period on this product.

TRENDware Technical Support (USA)

Tel: +1-310-891-1100

Fax: +1-310-891-1111

E-mail: support@trendware.com

www.trendware.com

**Support Hours: 7:30AM ~ 6:00PM,
Monday ~ Friday (except holidays)**



**Product Warranty
Registration**

Please take a moment to register
your product online. Go to TRENDware's
website at <http://www.trendware.com>

www.trendware.com

Free Manuals Download Website

<http://myh66.com>

<http://usermanuals.us>

<http://www.somanuals.com>

<http://www.4manuals.cc>

<http://www.manual-lib.com>

<http://www.404manual.com>

<http://www.luxmanual.com>

<http://aubethermostatmanual.com>

Golf course search by state

<http://golfingnear.com>

Email search by domain

<http://emailbydomain.com>

Auto manuals search

<http://auto.somanuals.com>

TV manuals search

<http://tv.somanuals.com>