



Quick Installation Guide



TEW-647GA

H/W: V1

Table of Contents

English	1
1. Before You Start	1
2. Hardware Installation	2
Troubleshooting	10

1. Before You Start



Package Contents

- TEW-647GA
- User's Guide CD-ROM
- Multi-Language Quick Installation Guide
- AC Power Adapter (12V DC, 0.5A)
- 1x RJ-45 cable

Installation Requirements

- A computer with a network adapter installed.
- Wireless router (e.g. TEW-639GR).
- An available DHCP Server – wireless routers usually have a built-in DHCP server.
- A game console with an Ethernet port.

Application



2. Hardware Installation

Note: There are two methods for setting the gaming adapter: Wi-Fi Protected Setup (WPS) Push Button Setup or Manual Setup. If your wireless router does not support WPS, go to section 2.2 Manual Setup. If your wireless router does support WPS, please follow the directions in section 2.1 Wi-Fi Protected Setup (WPS) Push Button Setup.

2.1. Wi-Fi Protected Setup (WPS) Push Button Setup

1. Plug the power adapter into the TEW-647GA and then into an available power outlet.



2. Press the WPS button on your wireless router. The example shows a TEW-639GR.



3. Press the WPS button on the TEW-647GA. The WPS button will start to blink.



4. Once the WPS button becomes steady, the TEW-647GA has been successfully configured.

5. Connect an Ethernet cable from the LAN port on the TEW-647GA to an Ethernet port on your game console.



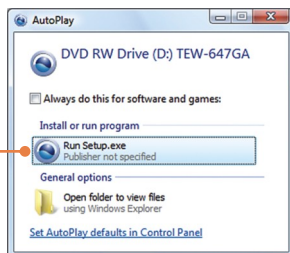
6. Congratulations, the installation is now complete.

2.2. Manual Setup (For Windows Users)

Note: Manual Setup requires a Windows PC.

1. Insert Utility CD-ROM into your computer's CD-ROM drive.

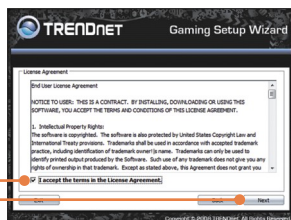
2. Click **Run Setup.exe** (Windows Vista only)



3. Click **Setup Wizard**.



4. Click **I accept the terms in the License Agreement** and then click **Next**.



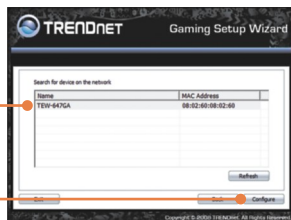
5. Connect the provided RJ-45 cable from the Ethernet port on your computer to the Ethernet port on the TEW-647GA. Then click **Next**.



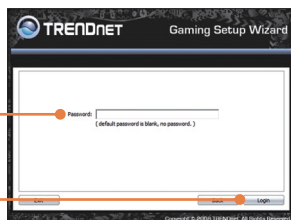
6. Connect the AC Power Adapter to the Access Point and then to a power outlet and then click **Next**.



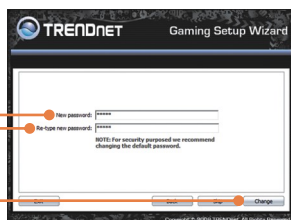
7. Select the TEW-647GA from the list and then click **Configure**.



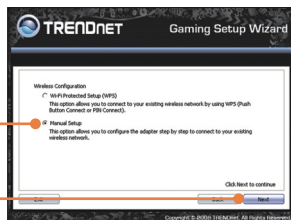
8. Enter your password and then click **Login**. By default, there is no password.



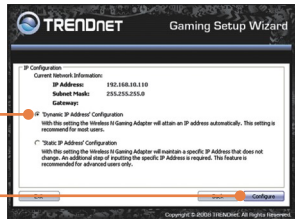
9. Enter a new password, retype the new password and then click **Change**.



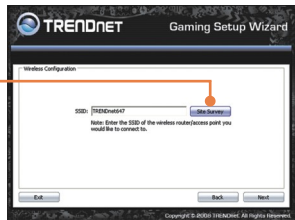
10. Select **Manual Setup** and then click **Next**.



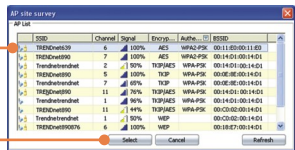
11. Select 'Dynamic IP Address' Configuration and then click Next.



12. Click Site Survey.



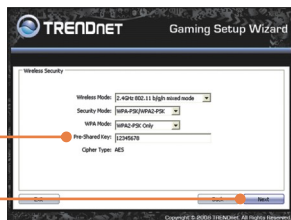
13. Select the SSID for your wireless router and then click Select.



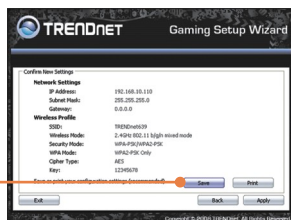
14. Click Next.



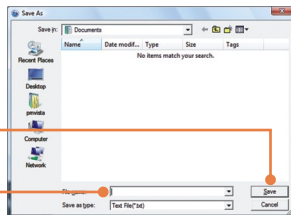
15. If encryption is enabled on your wireless network, the correct Wireless Mode, Security Mode, WPA Mode and Cipher Type will be selected. Enter your Pre-Shared key and then click **Next**. This example shows WPA-PSK.



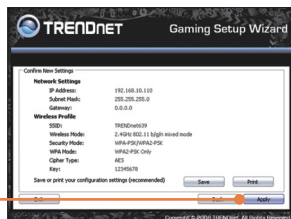
16. Click **Save** (Optional).



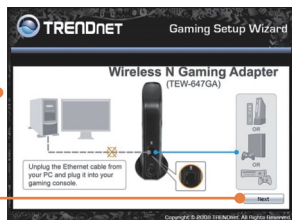
17. Give the file a name, then click **Save** (optional).



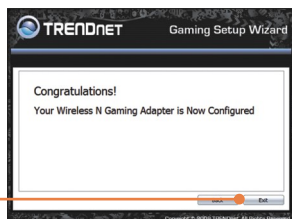
18. Click **Apply**.



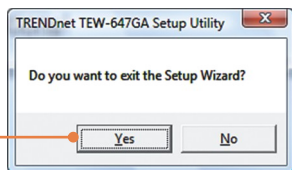
19. Connect the RJ-45 cable from the Ethernet port on the TEW-647GA to the Ethernet port on your game console. Then Click **Next**.



20. Click **Exit**.



21. Click **Yes** to exit.



22. Verify that the network setting on your game console is set to obtain an IP address automatically (dynamic IP). Please refer to the manual or contact your game console's technical support for instructions.

Your configuration is now complete.

For detailed information regarding the **TEW-647GA's** configuration and advanced settings, please refer the Troubleshooting section, User's Guide CD-ROM or TRENDnet's website at www.trendnet.com

Register Your Product

To ensure the highest level of customer service and support, please take a moment to register your product Online at: www.trendnet.com/register
Thank you for choosing TRENDnet

Q1: My Nintendo Wii does not have an Ethernet port. Can I use this with my Wii?

A1: You will need to install a USB to Ethernet adapter on your Wii. The TRENDnet TU2-ET100 version 3.0r is compatible with the Wii. Please go to www.trendnet.com for more information regarding the TU2-ET100.

Q2: My wireless router does not support Wi-Fi Protected Setup (WPS). What should I do?

A2: Please follow the instructions in section 2.2 Manual Setup if your wireless router does not support WPS.

Q3: I inserted the User's Guide CD-ROM into my computer's CD-ROM Drive to run the Setup Wizard, but the installation menu does not appear automatically. What should I do?

A3: For Windows 2000/XP, if the installation menu does not appear automatically, click **Start**, click **Run**, and type **D:\setup.exe** where "D" in "D:\setup.exe" is the letter assigned to your CD-ROM Drive, and then press the ENTER key on your keyboard. For Windows Vista, if the installation menu does not appear automatically, click **Start**, click the **Start Search** box, and type **D:\setup.exe** where "D" in "D:\setup.exe" is the letter assigned to your CD-ROM Drive, and then press the ENTER key on your keyboard.

Q4: I receive an unable to configure error when I go through the wizard. What should I do?

A4: First, double check that the wireless LED on the TEW-647GA and your wireless router is lit. Second, power cycle the TEW-647GA and your wireless router. Unplug the power to the TEW-647GA and your wireless router. Wait 15 seconds, then plug the power to your wireless router back in. Wait 15 seconds, then plug the TEW-647GA back in. Then go through the wizard again. Third, factory reset the TEW-647GA and go through the wizard again. To reset the TEW-647GA, take a pin or paper clip and press the reset button for 15 seconds, then let go.

Q5: I connect the TEW-647GA to my game console, but I am unable to play games online. What should I do?

A5: First, verify that a computer can get online through the router wirelessly. Second, verify that the network setting on your game console is set to obtain an IP address automatically (dynamic IP). Please refer to the manual or contact your game console's technical support for instructions. Third, power cycle the TEW-647GA and your wireless router. Unplug the power to the TEW-647GA and your wireless router. Wait 15 seconds, then plug the power to your wireless router back in. Wait 15 seconds, then plug the TEW-647GA back in. Fourth, factory reset the TEW-647GA. To reset the TEW-647GA, take a pin or paper clip and press the reset button for 15 seconds, then let go.

Q6: I followed the Quick Installation Guide and setup a new password. When I log in to the browser configuration an access error message appears. What should I do?

A6: The default user name is **admin**. When you log in to the browser configuration for the first time, make sure to enter **admin** for user name. Do not leave the user name field blank. If the password was changed and you don't remember it, you need to reset the TEW-647GA. To reset the TEW-647GA, take a pin or paper clip and press the reset button for 15 seconds, then let go.

Q7: Can I need a gaming console in order to use this device?

A7: This device is compatible with any Ethernet-enabled device.

Q8: Is WPS required on my router in order to use the TEW-647GA?

A8: A router with WPS is not required. You will need to use the wizard. When you run the wizard, you will need to select Manual Setup, instead of Wi-Fi Protected Setup (WPS). Manual Setup allows you to select the following encryption type:] WEP, WPA-PSK and WPA2-PSK. For detailed instructions, see section 2.2 Manual Setup.

If you still encounter problems or have any questions regarding the **TEW-647GA**, please contact TRENDnet's Technical Support Department.

GPL/LGPL General Information

This TRENDnet product includes free software written by third party developers. These codes are subject to the GNU General Public License ("GPL") or GNU Lesser General Public License ("LGPL"). These codes are distributed WITHOUT WARRANTY and are subject to the copyrights of the developers. TRENDnet does not provide technical support for these codes. The details of the GNU GPL and LGPL are included in the product CD-ROM.

Please also go to (<http://www.gnu.org/licenses/gpl.txt>) or (<http://www.gnu.org/licenses/lgpl.txt>) for specific terms of each license.

The source codes are available for download from TRENDnet's web site (http://trendnet.com/downloads/list_gpl.asp) for at least three years from the product shipping date.

You could also request the source codes by contacting TRENDnet.

20675 Manhattan Place, Torrance, CA 90501, USA. Tel: +1-310-961-5500 Fax: +1-310-961-5511

Informations générales GPL/LGPL

Ce produit TRENDnet comprend un logiciel libre écrit par des programmeurs tiers. Ces codes sont sujet à la GNU General Public License ("GPL" Licence publique générale GNU) ou à la GNU Lesser General Public License ("LGPL" Licence publique générale limitée GNU). Ces codes sont distribués SANS GARANTIE et sont sujets aux droits d'auteurs des programmeurs. TRENDnet ne fournit pas d'assistance technique pour ces codes. Les détails concernant les GPL et LGPL GNU sont repris sur le CD-ROM du produit.

Veillez également vous rendre en (<http://www.gnu.org/licenses/gpl.txt>) ou en (<http://www.gnu.org/licenses/lgpl.txt>) pour les conditions spécifiques de chaque licence.

Les codes source sont disponibles au téléchargement sur le site Internet de TRENDnet web site

(http://trendnet.com/downloads/list_gpl.asp) durant au moins 3 ans à partir de la date d'expédition du produit.

Vous pouvez également demander les codes source en contactant TRENDnet.

20675 Manhattan Place, Torrance, CA 90501, USA. Tel: +1-310-961-5500 Fax: +1-310-961-5511

GPL/LGPL General Information

Dieses Produkt enthält die freie Software "netfilter/iptables" (© 2000-2004 netfilter project <http://www.netfilter.org>) und die freie Software „Linux „mtd“ (Memory Technology Devices) Implementation (© 2000 David Woodhouse), erstmals integriert in Linux Version 2.4.0-test 3 v. 10.07.2000 (<http://www.kernel.org/pub/linux/kernel/v2.4/old-test-kernels/linux-2.4.0-test3.tar.bz2>), sowie weitere freie Software. Sie haben durch den Erwerb dieses Produktes keinerlei Gewährleistungsansprüche gegen die Berechtigten an der oben genannten Software erworben; weil diese die Software kostenfrei lizenzieren gewähren sie keine Haftung gemäß unten abgedruckten Lizenzbedingungen. Die Software darf von jedermann im Quell- und Objektcode unter Beachtung der Lizenzbedingungen der GNU General Public License Version 2, und GNU Lesser General Public License (LGPL) vervielfältigt, verbreitet und verarbeitet werden. Die Lizenz ist unten im englischsprachigen Originalwortlaut wiedergegeben. Eine nichtoffizielle Übersetzung in die deutsche Sprache finden Sie im Internet unter (<http://www.gnu.de/documents/gpl-2.0.de.html>). Eine allgemeine öffentliche GNU Lizenz befindet sich auch auf der mitgelieferten CD-ROM.

Sie können Quell- und Objektcode der Software für mindestens drei Jahre auf unserer Homepage www.trendnet.com im Downloadbereich (http://trendnet.com/langen/downloads/list_gpl.asp) downloadend. Sofern Sie nicht über die Möglichkeit des Downloads verfügen können Sie bei TRENDnet.

20675 Manhattan Place, Torrance, CA 90501 -U.S.A -, Tel.: +1-310-961-5500, Fax: +1-310-961-5511 die Software anfordern.

Información general sobre la GPL/LGPL

Este producto de TRENDnet incluye un programa gratuito desarrollado por terceros. Estos códigos están sujetos a la Licencia pública general de GNU ("GPL") o la Licencia pública general limitada de GNU ("LGPL"). Estos códigos son distribuidos SIN GARANTÍA y están sujetos a las leyes de propiedad intelectual de sus desarrolladores. TRENDnet no ofrece servicio técnico para estos códigos. Los detalles sobre las licencias GPL y LGPL de GNU se incluyen en el CD-ROM del producto.

Consulte también el (<http://www.gnu.org/licenses/gpl.txt>) ó el (<http://www.gnu.org/licenses/lgpl.txt>) para ver las cláusulas específicas de cada licencia.

Los códigos fuentes están disponibles para ser descargados del sitio Web de TRENDnet

(http://trendnet.com/downloads/list_gpl.asp) durante por lo menos tres años a partir de la fecha de envío del producto.

También puede solicitar el código fuente llamando a TRENDnet.

20675 Manhattan Place, Torrance, CA 90501, USA. Tel: +1-310-961-5500 Fax: +1-310-961-5511

Общая информация о лицензиях GPL/LGPL

В состав данного продукта TRENDnet входит бесплатное программное обеспечение, написанное сторонними разработчиками. Это ПО распространяется на условиях лицензий GNU General Public License ("GPL") или GNU Lesser General Public License ("LGPL"). Программы распространяются БЕЗ ГАРАНТИИ и охраняются авторскими правами разработчиков. TRENDnet не оказывает техническую поддержку этого программного обеспечения. Подробное описание лицензий GNU GPL и LGPL можно найти на компакт-диске, прилагаемом к продукту.

В пунктах (<http://www.gnu.org/licenses/gpl.txt>) и (<http://www.gnu.org/licenses/lgpl.txt>) изложены конкретные условия каждой из лицензий.

Исходный код программ доступен для загрузки с веб-сайта TRENDnet (http://trendnet.com/downloads/list_gpl.asp) в течение, как минимум, трех лет со дня поставки продукта.

Кроме того, исходный код можно запросить по адресу TRENDnet.

20675 Manhattan Place, Torrance, CA 90501, USA. Tel: +1-310-961-5500 Fax: +1-310-961-5511

GPL/LGPL informações Gerais

Este produto TRENDnet inclui software gratuito desenvolvido por terceiros. Estes códigos estão sujeitos ao GPL (GNU General Public License) ou ao LGPL (GNU Lesser General Public License). Estes códigos são distribuídos SEM GARANTIA e estão sujeitos aos direitos autorais dos desenvolvedores. TRENDnet não presta suporte técnico a estes códigos. Os detalhes do GNU GPL e do LGPL estão no CD-ROM do produto.

Favor acessar <http://www.gnu.org/licenses/gpl.txt> ou <http://www.gnu.org/licenses/lgpl.txt> para os termos específicos de cada licença.

Os códigos fonte estão disponíveis para download no site da TRENDnet (http://trendnet.com/langen/downloads/list_gpl.asp) por pelo menos três anos da data de embarque do produto.

Você também pode solicitar os códigos fonte contactando TRENDnet, 20675 Manhattan Place, Torrance, CA 90501, USA. Tel: +1-310-961-5500, Fax: +1-310-961-5511.

GPL/LGPL üldinformatsioon

See TRENDneti toode sisaldab vaba tarkvara, mis on kirjutatud kolmanda osapoole poolt. Koodid on allutatud GNU (General Public License) Üldise Avaliku Litsentsi (GPL) või GNU (Lesser General Public License) ("LGPL") Vähem Üldine Avalik Litsentsiga. Koode vahendatakse ILMA GARANTIITA ja need on allutatud arendajate poolt. TRENDnet ei anna koodidele tehnilist tuge. Detailsemat infot GNU GPL ja LGPL kohta leiate toote CD-ROMil. Infot mõlema litsentsi spetsiifiliste terminite kohta leiate (<http://www.gnu.org/licenses/gpl.txt>) või (<http://www.gnu.org/licenses/lgpl.txt>).

Infot mõlema litsentsi spetsiifiliste terminite kohta leiate (<http://www.gnu.org/licenses/gpl.txt>) või (<http://www.gnu.org/licenses/lgpl.txt>). Lähtekoodid on võimalik alla laadida TRENDneti kodulehelt

(http://trendnet.com/langen/downloads/list_gpl.asp) kolme aasta jooksul alates toote kättesaamise kuupäevast.

Samuti võite lähtekoodi paluda TRENDneti'lt, 20675 Manhattan Place, Torrance, CA 90501, USA. Tel: +1-310-961-5500, Fax: +1-310-961-5511.

Certifications

This equipment has been tested and found to comply with FCC and CE Rules.

Operation is subject to the following two conditions:

- (1) This device may not cause harmful interference.
- (2) This device must accept any interference received. Including interference that may cause undesired operation.



Waste electrical and electronic products must not be disposed of with household waste. Please recycle where facilities exist. Check with your Local Authority or Retailer for recycling advice.



NOTE: THE MANUFACTURER IS NOT RESPONSIBLE FOR ANY RADIO OR TV INTERFERENCE CAUSED BY UNAUTHORIZED MODIFICATIONS TO THIS EQUIPMENT. SUCH MODIFICATIONS COULD VOID THE USER'S AUTHORITY TO OPERATE THE EQUIPMENT.

ADVERTENCIA

En todos nuestros equipos se mencionan claramente las características del adaptador de alimentación necesario para su funcionamiento. El uso de un adaptador distinto al mencionado puede producir daños físicos y/o daños al equipo conectado. El adaptador de alimentación debe operar con voltaje y frecuencia de la energía eléctrica domiciliar existente en el país o zona de instalación.



TRENDnet[®]

Product Warranty Registration

Please take a moment to register your product online.
Go to TRENDnet's website at <http://www.trendnet.com/register>

TRENDnet[®]

20675 Manhattan Place
Torrance, CA 90501
USA

Free Manuals Download Website

<http://myh66.com>

<http://usermanuals.us>

<http://www.somanuals.com>

<http://www.4manuals.cc>

<http://www.manual-lib.com>

<http://www.404manual.com>

<http://www.luxmanual.com>

<http://aubethermostatmanual.com>

Golf course search by state

<http://golfingnear.com>

Email search by domain

<http://emailbydomain.com>

Auto manuals search

<http://auto.somanuals.com>

TV manuals search

<http://tv.somanuals.com>