



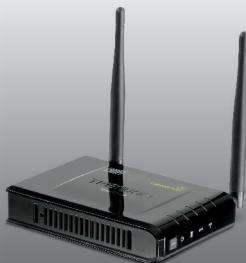


Quick Installation Guide  

TEW-637AP
3.01

Table of Contents

English	1
1. Before You Start.....	1
2. Hardware Installation.....	2
Troubleshooting.....	7



Package Contents

- TEW-637AP
- Multi-Language Quick Installation Guide
- CD-ROM (Utility and User's Guide)
- Power Adapter (12V DC, 0.5A)
- Network Cable (0.6m / 2ft.)

System Requirements

- Web Browser: Internet Explorer (6 or higher), Firefox 2.0 or higher, Opera, Chrome, Safari
- A computer with a network adapter or wireless adapter properly installed
- A router with an available network LAN port
- An available DHCP Server – routers usually have a built-in DHCP server

2. Hardware Installation

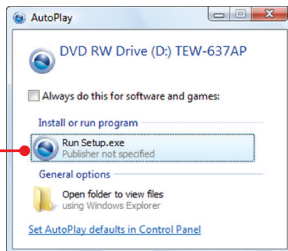
Note:

1. Locate an optimum location for the Access Point. The best place for the Access Point is usually at the center of your wireless network.
2. Disable any anti-virus and firewall programs before starting hardware installation.

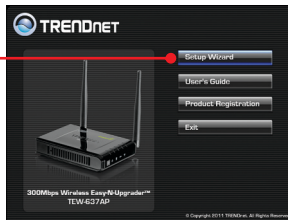
For Windows Users

1. Insert Utility CD-ROM into your computer's CD-ROM drive.

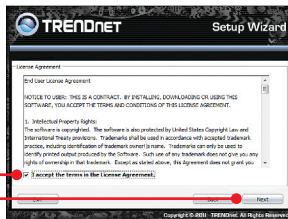
2. Click **Run Setup.exe**.



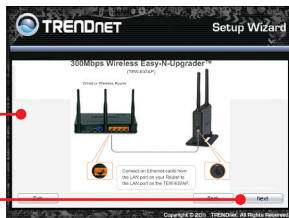
3. Click **Setup Wizard**.



4. Click **I accept the terms in the License Agreement** and then click **Next**.



5. Connect the provided network cable from a LAN port on your Router to the LAN port on the TEW-637AP. Then click **Next**.

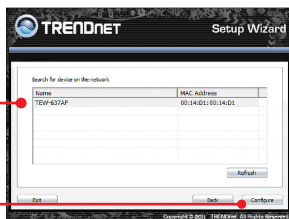


6. Connect a RJ-45 cable from a LAN port on your Router to the Ethernet port on your computer.

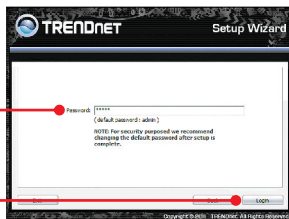
7. Connect the Power Adapter to the Access Point and then to a power outlet. Verify that the power switch is set to the on position (EU version only). Then click **Next**.



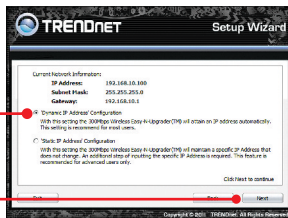
8. Select the TEW-637AP from the list and then click **Configure**.



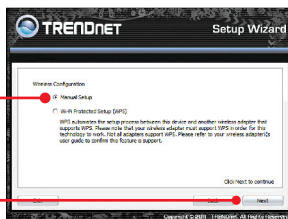
9. Enter a password and then click **Login**. The default password is **admin**.



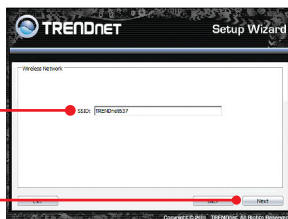
10. Select **Dynamic IP Address Configuration** and then click **Next**.



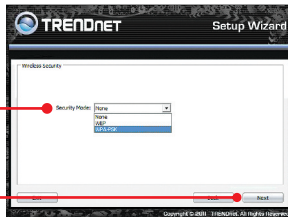
11. Select **Manual setup** and then click **Next**.



12. Enter a SSID (Wireless Network Name) and then click **Next**. By default, the SSID is **TRENDnet637**. The SSID is the wireless network name of your wireless network (e.g. wireless router or access point). Enter a unique SSID. Choose something that you would easily identify when searching for available wireless networks.



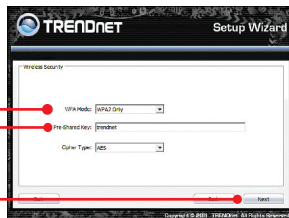
13. Select a Security Mode and then click **Next**



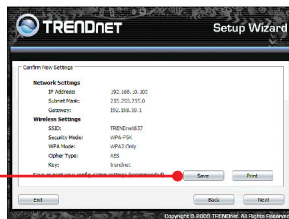
Note:

1. To protect your network from any unauthorized access it is recommended to enable wireless encryption.
2. The example below is for WPA-PSK/WPA2-PSK (AES) security. If you select WPA-PSK or WPA2-PSK, make sure your wireless adapters support WPA or WPA2. If your wireless adapters do not support WPA or WPA2, then select WEP.
3. WEP encryption only supports 802.11b/g speed of up to 54Mbps.
4. Once encryption is enabled on the router, each wireless computer and device must be configured with the same encryption key.

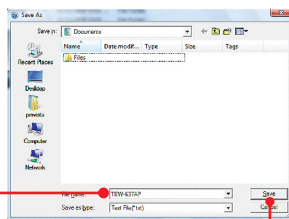
14. Select the desired **WPA** mode, enter characters for your Pre-Shared key and then click **Next**. For WPA-PSK or WPA2-PSK, the Pre-Shared Key must be between 8 and 63 ASCII or 64 HEX characters. Make sure to copy down the Pre-Shared Key. You will need the Pre-Shared Key when you configure your wireless adapter(s).



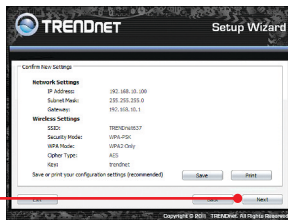
15. Click **Save** (optional). This saves your configuration settings in a file, which can be reloaded when needed.



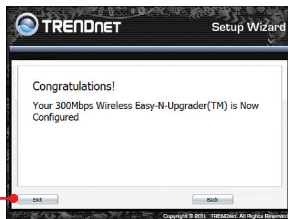
16. Give the file a name, then click **Save**.



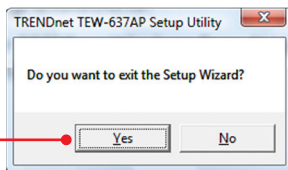
17. Click **Next** to apply the settings.



18. Click **Exit**.



21. Click **Yes** to exit.



Note: To connect a wireless computer to the TEW-637AP, please refer to the first question in the troubleshooting section.

Your Installation is complete

For detailed information regarding the **TEW-637AP's** configuration and advanced settings, please refer to the Troubleshooting section, User's Guide on the Utility CD-ROM, or TRENDnet's website at <http://www.trendnet.com>.

Register Your Product

To ensure the highest level of customer service and support, please take a moment to register your product Online at: www.trendnet.com/register

Thank you for choosing TRENDnet

1. All the settings are correct, but I can not make a wireless connection to the Access Point.

1. Double check that the wireless LED on the Access Point is lit.
2. Power cycle the Access Point. Unplug the power to the Access Point. Wait 15 seconds, then plug the power back in.
3. Contact the manufacturer of your wireless network adapter. Make sure the wireless network adapter is configured with the proper SSID. The default SSID of the Access Point is **TRENDnet637**. If you have enabled any encryption on the Access Point, make sure to configure the wireless network adapter with the same Pre-shared key.

2. I have a wireless adapter that supports WiFi Protected Setup (WPS) push button setup. How do I setup WPS between the TEW-637AP and my wireless adapter?

1. Press on the **WPS** button on the front of the TEW-637AP for 10 seconds.
2. Refer to your wireless adapters for instructions on setting up WPS.

3. I inserted the Utility CD-ROM into my computer's CD-ROM Drive but the installation menu does not appear automatically. What should I do

1. For Windows 7, if the installation menu does not appear automatically, click on the Windows Icon on the bottom left hand corner of the screen, click the "Search programs and files" box, and type D:\autorun.exe, where "D" in "D:\autorun.exe" is the letter assigned to your CD-ROM Drive, and then press the ENTER key on your keyboard
2. For Windows Vista, if the installation menu does not appear automatically, click on the Windows Icon on the bottom left hand corner of the screen, click on the "Start Search" box, and type D:\autorun.exe, where "D" in "D:\autorun.exe" is the letter assigned to your CD-ROM Drive, and then press the ENTER key on your keyboard.
3. For Windows XP/2000 if the window does not appear automatically, click Start, click Run and type D:\autorun.exe where "D" in "D:\autorun.exe" is the letter assigned to your CD-ROM Drive, and then press the ENTER key on your keyboard.

4. I do not have a DHCP server or DHCP is disabled on my network and I am unable to configure the TEW-637AP. What should I do?

1. Go to the TCP/IP settings on your computer and assign a static IP address on your computer's network adapter in the subnet of 192.168.10.x. Since the default IP address of the TEW-637AP is 192.168.10.100, do not assign a static IP address of 192.168.10.100 on your computer's network adapter.
2. Open Internet Explorer and enter <http://192.168.10.100> into the address bar.

5. I followed the Quick Installation Guide and setup a new password. When I log in to the browser configuration an access error message appears. What should I do?

If the password was changed and you don't remember it, you need to reset the TEW-637AP. To reset the TEW-637AP, power up the unit and wait 30 seconds for the unit to boot up. Then take a pin or paper clip and press the reset button for 15 seconds, then let go. The reset button is located on the bottom of the TEW-637AP. Please note that performing a reset on the TEW-637AP will erase all settings applied and will revert back to default settings. The default user name is admin and the default password is admin. When you log in to the browser configuration for the first time, make sure to enter admin for user name. Do not leave the user name field blank

LED/Button	Color	Sequence	Definition
PWR (Power) LED	Green	Solid	Device is on
	N/A	Off	Device is off
Network Port Link/Act LEDs	Green	Solid	LAN port connected at 10/20 Mbps or 100/200Mbps (Half/Full Duplex)
		Blinking	LAN port data transmitting/receiving 10/20Mbps or 100/200Mbps (Half/Full Duplex)
	N/A	Off	Wireless LAN is on or enabled/Wireless data transmission
Wireless LED	Green	Blinking	Wireless LAN is on or enabled/Wireless data transmission
	N/A	Off	Wireless LAN is off or disabled
WPS LED	Green	Solid	WPS authentication process complete
		Blinking	WPS authentication in process
	N/A	Off	WPS is not activated or disabled
Power Switch (EU Version only)	N/A	N/A	Turns on/off power to the TEW-637AP
Reset Button	N/A	N/A	Hold 15 seconds to reset device to factory defaults.
WPS Button	N/A	N/A	Hold 3 seconds to activate WPS

If you still encounter problems or have any questions regarding the **TEW-637AP**, please contact TRENDnet's Technical Support Department.

The following are some general wireless tips to help minimize the impact of interference within an environment.

Assign your network a unique SSID

Do not use anything that would be identifying like "Smith Family Network". Choose something that you would easily identify when searching for available wireless networks.

Do not turn off the SSID broadcast

The SSID broadcast is intended to be on and turning it off can cause connectivity issues. The preferred method of securing a wireless network is to choose a strong form of encryption with a strong and varied encryption key.

Note: after setting up the SSID, encryption type and encryption key/passphrase, please make a note of them for future reference. You will need this information to connect your wireless computers to the wireless router/access point.

Change the channel

Most wireless access points and routers are defaulted to channel 6. If you have a site survey tool that will display the channels you can plan your channel selection around neighboring access points to minimize interference from them. If your site survey tool does not display the channel try using channels 1 or 11.

If you are using 802.11n you should be securing the network with WPA2 security.

Note: Due to Wi-Fi certification considerations if you choose WEP, WPA or WPA2-TKIP encryption this device may operate in legacy wireless mode (802.11b/g). You may not get 802.11n performance as these forms of encryption are not supported by the 802.11n specification.

Please also make sure that the wireless hardware is not placed in any type of shelving or enclosures.

Avoid stacking hardware on top of each other to prevent overheating issues

Maintain enough free space around the hardware for good ventilation and airflow. There should also be plenty of free space around the antennas to allow the wireless signal to propagate.

There are a number of other environmental factors that can impact the range of wireless devices.

1. Adjust your wireless devices so that the signal is traveling in a straight path, rather than at an angle. The more material the signal has to pass through the more signal you will lose.
2. Keep the number of obstructions to a minimum. Each obstruction can reduce the range of a wireless device. Position the wireless devices in a manner that will minimize the amount of obstructions between them.

3. Building materials can have a large impact on your wireless signal. In an indoor environment, try to position the wireless devices so that the signal passes through less dense material such as dry wall. Dense materials like metal, solid wood, glass or even furniture may block or degrade the signal.
4. Antenna orientation can also have a large impact on your wireless signal. Use the wireless adapter's site survey tool to determine the best antenna orientation for your wireless devices.
5. Interference from devices that produce RF (radio frequency) noise can also impact your signal. Position your wireless devices away from anything that generates RF noise, such as microwaves, HAM radios, Walkie-Talkies and baby monitors.
6. Any device operating on the 2.4GHz frequency will cause interference. Devices such as 2.4GHz cordless phones or other wireless remotes operating on the 2.4GHz frequency can potentially drop the wireless signal. Although the phone may not be in use, the base can still transmit wireless signals. Move the phone's base station as far away as possible from your wireless devices.

If you are still experiencing low or no signal consider repositioning the wireless devices or installing additional access points. The use of higher gain antennas may also provide the necessary coverage depending on the environment.

Declaration of Conformity



Company Information:

Company Name:

TRENDnet, Inc.

Company Address:

20675 Manhattan Place

Torrance, CA 90501

USA

Product Information:

Product Description:

300Mbps Wireless Easy-N-Upgrader

Model Number:

TEW-637AP

Brand name:

TRENDnet



Technical Standards:

EN 300 328 V1.7.1: 10-2006

EN 301 489-1 V1.8.1: 04-2008

EN 301 489-17 V2.1.1 : 05-2009

EN 62311:2008

EN 60950-1:2006+A11: 2009

Declaration:

The product is herewith confirmed to comply with the requirements of Directive 1999/5/EC of the Council (European Parliament) on the radio and telecommunications terminal equipment and Energy-related products Directive 2009/125/EC.

I hereby declare that the products and devices mentioned above are consistent with the standards and provisions of the guidelines.

Sonny Su

Full Name

April 20, 2011

Date

Director of Technology

Position / Title

Signature

Certifications

This equipment has been tested and found to comply with FCC and CE Rules.

Operation is subject to the following two conditions:

- (1) This device may not cause harmful interference.
- (2) This device must accept any interference received. Including interference that may cause undesired operation.



Waste electrical and electronic products must not be disposed of with household waste. Please recycle where facilities exist. Check with you Local Authority or Retailer for recycling advice.



NOTE: THE MANUFACTURER IS NOT RESPONSIBLE FOR ANY RADIO OR TV INTERFERENCE CAUSED BY UNAUTHORIZED MODIFICATIONS TO THIS EQUIPMENT. SUCH MODIFICATIONS COULD VOID THE USER'S AUTHORITY TO OPERATE THE EQUIPMENT.

ADVERTENCIA

En todos nuestros equipos se mencionan claramente las características del adaptador de alimentación necesario para su funcionamiento. El uso de un adaptador distinto al mencionado puede producir daños físicos y/o daños al equipo conectado. El adaptador de alimentación debe operar con voltaje y frecuencia de la energía eléctrica domiciliar existente en el país o zona de instalación.



Product Warranty Registration

Please take a moment to register your product online.
Go to TRENDnet's website at <http://www.trendnet.com/register>

Free Manuals Download Website

<http://myh66.com>

<http://usermanuals.us>

<http://www.somanuals.com>

<http://www.4manuals.cc>

<http://www.manual-lib.com>

<http://www.404manual.com>

<http://www.luxmanual.com>

<http://aubethermostatmanual.com>

Golf course search by state

<http://golfingnear.com>

Email search by domain

<http://emailbydomain.com>

Auto manuals search

<http://auto.somanuals.com>

TV manuals search

<http://tv.somanuals.com>