



TRENDnet®



Microsoft Windows Vista Installation Guide

TEW-509UB

1. Microsoft Windows Vista Installation

Important! DO NOT install the adapter in the computer until instructed to do so.

1. Go to <http://www.trendnet.com/support/vista.htm> and scroll down until you find TEW-509UB. Click download, click the Vista driver link and save the driver to your computer.

Note: You will need to uncompress the drivers after you download the drivers.

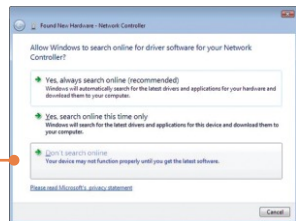
2. Connect the wireless adapter to an available USB port of your Windows Vista computer.



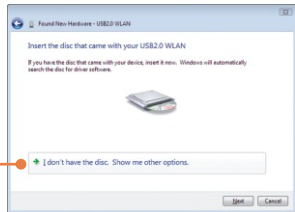
3. Click **Locate and install driver software (recommended)**.



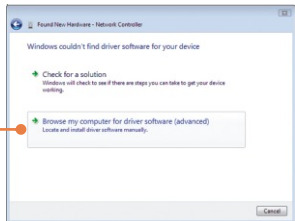
4. Click **Don't search online**.



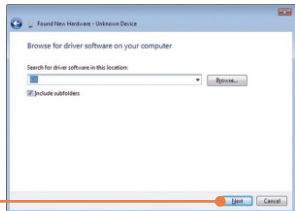
5. Click **I don't have the disc. Show me other options.**



6. Click **Browse my computer for driver software (advanced).**



7. Type in **C:**. Then click **next** or click **browse** to locate the drivers.

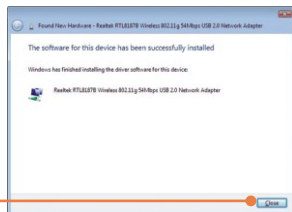


Note: C:\ represents the drive letter that is assigned to your hard drive. If you saved the drivers to a flash drive or burned the drivers to a CD, type in the appropriate driver letter (e.g. F:\).

8. Click **Install this driver software anyway.**



9. Click **Close**.

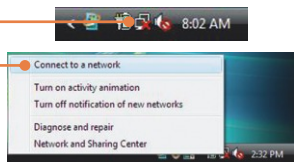


Your installation is now complete.

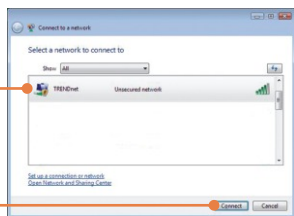
For detailed information regarding the TEW-509UB configuration and advanced settings, please refer to the User's Guide included on the Utility & Driver CD-ROM or TRENDnet's website at www.trendnet.com

Connecting to an Unsecured Wireless Connection

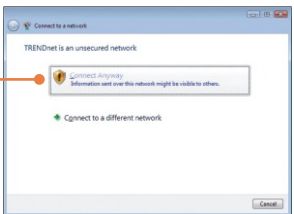
1. On the bottom right-hand corner of the screen, right click the wireless network connection icon and select **Connect to a network**.



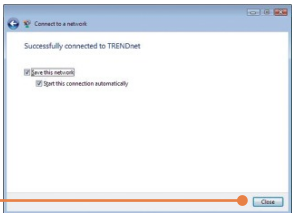
2. Select the desired network and then click **Connect**.



3. Click **Connect Anyway**.



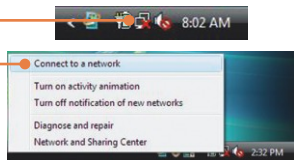
4. Click **Close**.



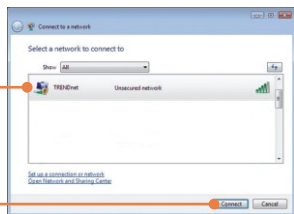
Connecting to a Secured Wireless Connection (WEP-PSK and WPA-PSK)

Note: Make sure you know the wireless encryption key before proceeding. If you are not sure, contact the network administrator or log on to your wireless router.

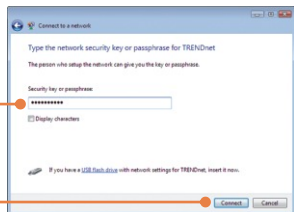
1. On the bottom right-hand corner of the screen, right click the wireless network connection icon and select **Connect to a network**.



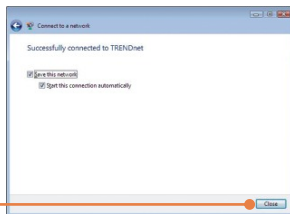
2. Select the desired network and then click **Connect**.



3. Enter the security key and then click **Connect**.



4. Click **Close**.



Wireless configuration is now complete.

For detailed information regarding the TEW-509UB configuration and advanced settings, please refer to the User's Guide included on the Utility & Driver CD-ROM or TRENDnet's website at www.trendnet.com



TRENDnet[®]

TRENDnet Technical Support

US • Canada

Toll Free Telephone: 1(866) 845-3673

24/7 Tech Support



Europe (Germany • France • Italy • Spain • Switzerland • UK)

Toll Free Telephone: +00800 60 76 76 67

English/Espanol - 24/7

Francais/Deutsch - 11am-8pm, Monday - Friday MET

Worldwide

Telephone: +(31) (0) 20 504 05 35

English/Espanol - 24/7

Francais/Deutsch - 11am-8pm, Monday - Friday MET

Product Warranty Registration

Please take a moment to register your product online.

Go to TRENDnet's website at <http://www.trendnet.com>

TRENDnet[®]

20675 Manhattan Place
Torrance, CA 90501
USA

Free Manuals Download Website

<http://myh66.com>

<http://usermanuals.us>

<http://www.somanuals.com>

<http://www.4manuals.cc>

<http://www.manual-lib.com>

<http://www.404manual.com>

<http://www.luxmanual.com>

<http://aubethermostatmanual.com>

Golf course search by state

<http://golfingnear.com>

Email search by domain

<http://emailbydomain.com>

Auto manuals search

<http://auto.somanuals.com>

TV manuals search

<http://tv.somanuals.com>