



Quick Installation Guide



TV-IP110
TV-IP110W

Table of Contents

English	1
1. Before You Start	1
2. Hardware Installation	3
3. Configure the Internet Camera	4
Troubleshooting	8

1. Before You Start



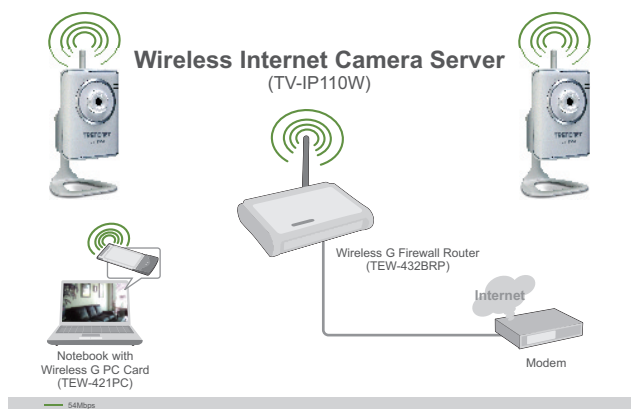
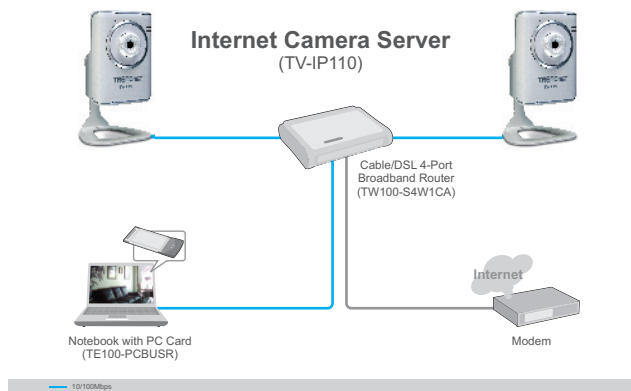
Package Contents

- TV-IP110/TV-IP110W
- Quick Installation Guide
- Utility CD-ROM
- AC Power Adapter (5V, 2.5A)
- 1 x 2dBi Detachable Antenna (TV-IP110W)
- 1.8m (5.9 ft) Cat.5 Fast Ethernet cable

System Requirements

- 10/100Mbps Ethernet
- CPU: Pentium 4 1GHz processor or above
- Memory: 256MB RAM or above/ 512MB RAM or above (Windows Vista)
- VGA Resolution: 800 x 600 or above
- Web Browser: Internet Explorer (6.0 or higher)
- Windows 2000/XP/Vista

Application



2. Hardware Installation

1. Attach the **Antenna**. (TV-IP110W)

2. Connect a RJ-45 network cable from a Switch/Router to the **Ethernet** port of the Internet Camera.

3. Connect the AC Power Adapter to the **Internet Camera Server** and then to a power outlet.

4. Verify the Power and Link LEDs are on. (TV-IP110W shown here)



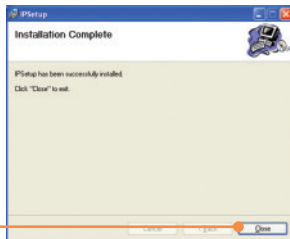
3. Configure the Internet Camera

Note: It is recommended that you configure the Internet Camera from a wired computer. Since the Internet Camera's default IP address is 192.168.10.30, make sure no other network devices are assigned an IP address of 192.168.10.30.

1. Insert the Utility CD-ROM into your CD-ROM drive and then click **IP Setup**.



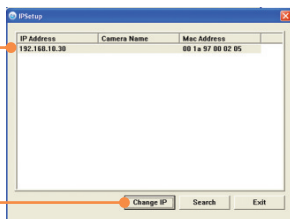
2. Follow the **Installation Wizard** instructions and then click **Close**.



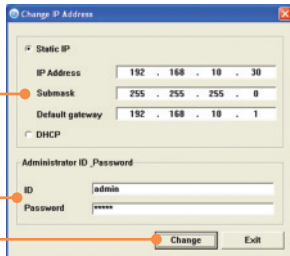
3. Go to **Start -> Programs -> TRENDnet -> IPSetup** and click **IPSetup**.



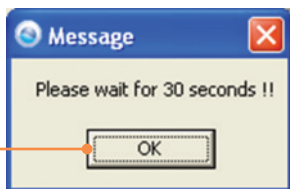
4. Select the Internet Camera and click **Change IP**.



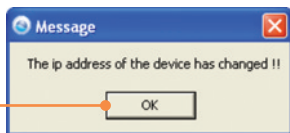
5. Configure the IP address to be in the same subnet as your network, type in the **Administrator ID** and **Password** and click **Change**. By default:
ID: **admin**
Password: **admin**



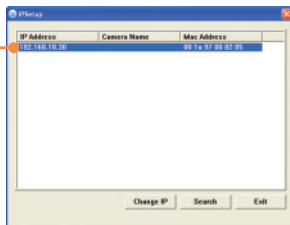
6. Click **OK** and wait 30 seconds.



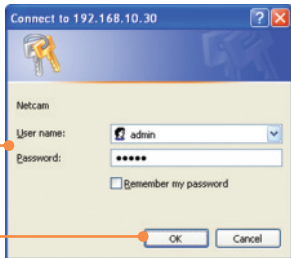
7. Click **OK**.



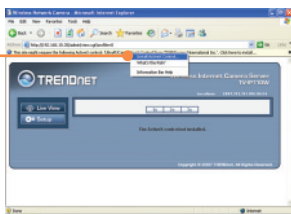
8. Double click the Internet Camera to access the browser configuration.



9. Enter the User name and Password, and then click **OK**.
User Name: **admin**
Password: **admin**



10. Right click and select **Install Active X Control**.



11. Click **Install**.



12. Click **Network** and then click **Wireless**. Configure your wireless settings to match your wireless network's settings and then click **Apply** (Enable/Enter the WEP/WPA key when your wireless network is encrypted. Contact your network administrator for more information). (TV-IP110W only)

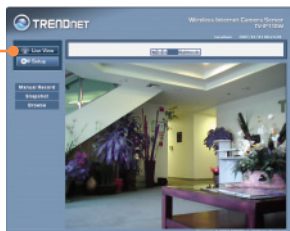


13. Disconnect the RJ-45 cable and unplug the power. Then plug the power back in (TV-IP110W).

Note: The TV-IP110W will not work wirelessly until you disconnect the Ethernet cable from the back of the camera.

14. Verify the Power and Link LEDs are on.

15. Click **Live View**.



Your installation is now complete.

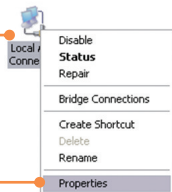
Note: For detailed information regarding the TV-IP110/TV-IP110W configuration and advanced settings, please refer to the Troubleshooting section, User's Guide on the Utility CD-ROM, or TRENDnet's website at <http://www.trendnet.com>.

Register Your Product

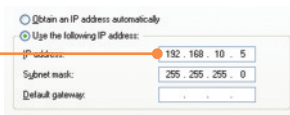
To ensure the highest level of customer service and support, please take a moment to register your product Online at: www.trendnet.com/register
Thank you for choosing TRENDnet

Q1: How do I configure TCP/IP settings on my computer?

1. Go into the **Control Panel** and double-click the **Network Connections** icon, and then right-click the **Local Area Connection** icon and then click **Properties**.



2. Click **Internet Protocol (TCP/IP)** and then click **Properties**. Then click on **Use the following IP address**, and make sure you assign your network adapter an IP address in the subnet of 192.168.10.x.



Q2: The Image is blurry. How can I adjust the focus on the Internet camera?

A2: You can adjust the Internet Camera's focus by rotating the lens.

Q3: When I click on Live View the image does not load?

A3: First, make sure that you are using a browser that supports Java. Second, make sure that Java is installed. Third, make sure that you added Active X. See step 10 and 11 in Section 2: **Configure the Internet Camera**.

Q4: How do I connect the TV-IP110W to my wireless router or access point?

A4: Make sure that you configure the camera to have the same SSID, encryption mode and key (if enabled). Follow the instructions in section 2 to configure the camera with the SSID and encryption key.

Q5: After I successfully configured the TV-IP110W to match my wireless network settings, I can not connect to the camera.

A5: First, verify that the wireless settings match your wireless network settings. Second, verify in the wireless section of the browser configuration that the Enable option is checked. Third, make sure to disconnect the Ethernet cable from the camera and verify that the LINK LED is blinking green.

Q6: I forgot my password. What should I do?

A6: Take a pin or paperclip and press the reset button on the back of the unit for 15 seconds. This will return settings back to factory defaults. The default IP address is 192.168.10.30. The default administrator ID and password is admin.

If you still encounter problems or have any questions regarding the TV-IP110/TV-IP110W, please contact TRENDnet's Technical Support Department.

Certifications

This equipment has been tested and found to comply with FCC and CE Rules.

Operation is subject to the following two conditions:

- (1) This device may not cause harmful interference.
- (2) This device must accept any interference received. Including interference that may cause undesired operation.



Waste electrical and electronic products must not be disposed of with household waste. Please recycle where facilities exist. Check with you Local Authority or Retailer for recycling advice.



NOTE: THE MANUFACTURER IS NOT RESPONSIBLE FOR ANY RADIO OR TV INTERFERENCE CAUSED BY UNAUTHORIZED MODIFICATIONS TO THIS EQUIPMENT. SUCH MODIFICATIONS COULD VOID THE USER'S AUTHORITY TO OPERATE THE EQUIPMENT.

ADVERTENCIA

En todos nuestros equipos se mencionan claramente las características del adaptador de alimentación necesario para su funcionamiento. El uso de un adaptador distinto al mencionado puede producir daños físicos y/o daños al equipo conectado. El adaptador de alimentación debe operar con voltaje y frecuencia de la energía eléctrica domiciliar existente en el país o zona de instalación.



TRENDnet Technical Support

US • Canada

Toll Free Telephone: 1(866) 845-3673

24/7 Tech Support

Europe (Germany • France • Italy • Spain • Switzerland • UK)

Toll Free Telephone: +00800 60 76 76 67

English/Espanol - 24/7

Worldwide

Telephone: +(31) (0) 20 504 05 35

English/Espanol - 24/7



Product Warranty Registration

Please take a moment to register your product online.

Go to TRENDnet's website at <http://www.trendnet.com/register>

TRENDnet

20675 Manhattan Place
Torrance, CA 90501
USA

Free Manuals Download Website

<http://myh66.com>

<http://usermanuals.us>

<http://www.somanuals.com>

<http://www.4manuals.cc>

<http://www.manual-lib.com>

<http://www.404manual.com>

<http://www.luxmanual.com>

<http://aubethermostatmanual.com>

Golf course search by state

<http://golfingnear.com>

Email search by domain

<http://emailbydomain.com>

Auto manuals search

<http://auto.somanuals.com>

TV manuals search

<http://tv.somanuals.com>