

User's Manual LCD-1510V

1319 Dexter Ave. N., Ste. 020
Seattle, WA 98109
Tel: 206-623-6000 Fax: 206-623-6609
sales@totevision.com - www.totevision.com

Table of Content

CHAPTER 1

Introduction	1
Specification	3
LCD-1510V 15" Specification.....	3

CHAPTER 2

Installing The Monitor	11
Control Function	
LCD-1510V 15" Control function.....	13

CHAPTER 3

Adjusting The Monitor.....	20
OSD Screen.....	20
Adjustment Icon.....	20

CHAPTER 4

Adjusting video monitor	24
Video OSD	24
15" LCD MONITOR	24
Adjustment Icon.....	24

CHAPTER 1

INTRODUCTION

BEFORE INSTALLING YOUR MONITOR

Read this manual cover to cover.

PAY ATTENTION to all WARNING and CAUTIONS

DO NOT use computer components not recommend by the manufacture

Do not attempt to service the monitor your self. If a problem occurs, contact the manufacture's authorized service center

ABOUT YOUR MONITOR

This monitor is a microprocessor-controlled, color monitor that uses a TFT LCD panel. The monitor conforms to EPA Energy Star and VESA DPMS (Display Power Management Signaling) power management standards.

RGB MODE

This monitor is equipped with a microprocessor that identifies your computer 's video mode and allows user to adjust the setting.

VIDEO MODE

This monitor can accept the NTSC or PAL signal to display the video screen automatically. It also implement the video screen on PC function, we called PIP function. We also provide one pair of BNC in/out connector inside.

FACTORY-PRESET MODES

Table 1 shows standard video mode setting that has been pre-adjusted at the factory for accurate video display. These setting are stored in the monitor's memory

Table 1. Factory-Preset Modes

PC mode

Mode	Resolution	H-Freq.(KHz)	V-Freq(Hz)
NEC	640x400	24.83	56.4
VGA	640x350	31.47	70
	720x400	31.47	70
	640x480	31.47	60
	640x480	37.86	72
	640x480	37.5	75
SVGA	800x600	35.16	56.3
	800x600	37.88	60.3
	800x600	48.08	72.2
	800x600	46.87	75
XGA	1024x768	48.36	60
	1024x768	56.47	70
	1024x768	60	75
SXGA	1280x1024	63.98	60
	1280x1024	80	75
Macintosh	640x480	35	66.7
	832x624	49.7	74.55
	1024x768	48.78	60
	1024x768	60.241	74.927

Video Mode

NTSC 525 lines, 60 fields
 PAL 625 lines, 50/60 fields

Note: The 15" LCD monitor didn't support SXGA mode

SPECIFICATIONS

- **LCD-1510V 15" LCD Monitor**

Overall Dimension (HxWxD):	404 x 393 x 162 mm
Effective Display area (H/V):	304.1 x 228.1 mm
Display colors:	16.7M (dithering) colors
Scan Frequencies:	
Horizontal	31.47K to 60KHz
Vertical	60Hz to 75Hz
Viewing Angle:	140° (Horizontal & Vertical)
Number of Pixels:	1024x768 pixels
Pixel pitch:	0.297x0.297 mm
Picture Tube:	15" TFT LCD panel
Power:	
Input	110~240VAC (auto-sensing) Frequency: 48-62Hz
Consumption	35Watts maximum (on) 1 Watts (Power saving off mode)
PC RGB Connector:	15pin Mini D-sub (Standard)
Audio connector	1 x stereo input
Speaker	2W x 2
RGB Signals:	
Video	Analog RGB 0.7Vp-p/75Ω
Sync	Separate
Display Data Channel:	
Compatibility	VESA DDC 1/2B
Video connector Input	
S-connector	x 1 (S-video In)
AV connector	x 3 (one for video, Two for audio)
Mini D type	x 1 (for YcbCr/Component In)
BNC connector	x 1 (Composite Video In)
Video Connector output	

15" LCD MONITOR

BNC connector	x 1 (Composite Video Out)
Operations:	
User Controls	On/Off Power Button +/- and Up/down keys
On Screen Display	Auto adjustment, Brightness, contrast color temperature, Hue, Tint, Source select, PIP setup H-position, V-position, OSD position Audio volume, bass, treble, mute Load default
Control Type:	Digital
Compatibility:	IBM and compatible, Apple Macintosh, NEC
Environmental Limits:	
Operating Temp	32° to 103°F (0° to 40°C)
Storage Temp.	-4° to 140°F (-20° to 60°C)
Operating Humidity	10 to 85% without Condensation
Storage Humidity	10 to 95% without Condensation
Agency Approval	
EMI	FCC-B and CE
Emissions	MPR-II
Energy Saving	EPA energy star, VESA DPMS
Safety	UL, TUV

PRECAUTIONS

HANDLING

- The monitor must be treated with caution and not be exposed to impact and shock. The monitor is made of fragile glass panel.
- Do not expose to sharp shock.
- Never touch the display area or rub on it with a hard, stiff object or tools because the panel is easily scratched, even your monitor is protected with one glass filter.
- Every effort has been made to protect the panel, however the monitor is an extremely fragile product.

CLEANING

- The display area is highly prone to scratching. Do not use ketone type material (ex. Acetone), Ethyl alcohol, toluene, ethyl acid or Methyl chloride to clear the panel. It might permanently damage the panel.
- The desirable cleaners are water, IPA (Iso Propyl Alcohol) or Hexane.
- Don't let water or oil penetrate the monitor. If the droplets are kept for a long time, Staining and discoloration may occur.
- Keep food particles and fingerprints away from the display area.

15" LCD MONITOR

STORAGE

- Do not store the monitor in temperature higher than 35 degree Celsius or humidity higher than 70% and no condensation.
- Store in dark places away from sunlight and ultra violet (UV) radiation.
- Air bubble may develop within the glass panel, if this is not observed.

CHAPTER 2

PRODUCT PACKAGE

Open the shipping carton and check the contents. If any items are missing or damaged, contact your dealer immediately.

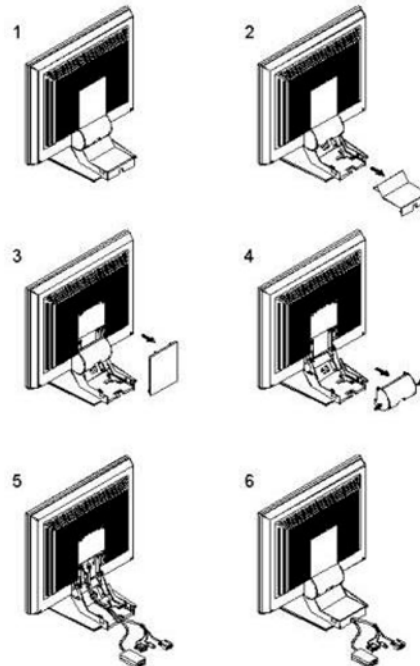
The package should include the following items

- Analog Color TFT LCD Monitor
- Accessory Box:
 1. VGA cable x 1
 2. AC to DC adapter x 1
 3. Power Cord x 1
 4. User's manual/Warranty Card x 1
 5. Audio cable x 1
 6. Mini DIN/RCA cable (for Component Video In use)

INSTALLING THE MONITOR

The monitor is equipped with a auto sensing power supply for voltage ranges from 110~240VAC, 60/50Hz. Confirm the line voltage designation on the rear panel of the monitor.

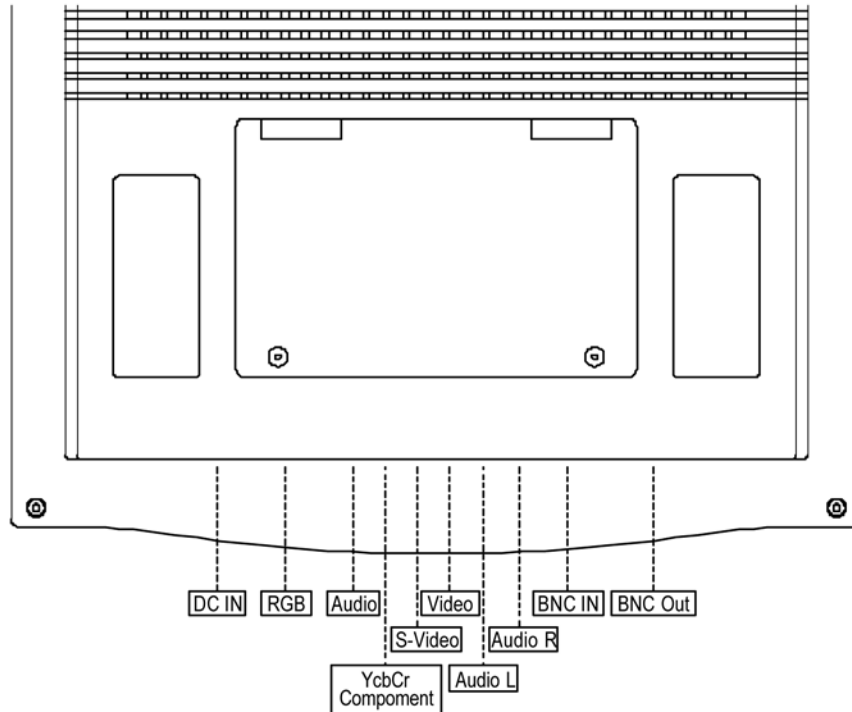
Note: The drawing is used for 17" and 19" monitor to install the power adapter and VGA cable.



15" LCD MONITOR

FOLLOW THESE STEPS TO INSTALL THE MONITOR

1. Before you connect the cables, make sure that the monitor and the system unit power switches are OFF
2. Plug one end of the 15pin signal cable to the monitor and the other end to the video signal connector at the rear of the system. Tighten the two screws on the cable connector on both ends, otherwise the screen will be abnormal and LED light is yellow color, not the normal green color.
3. Connect the power to the monitor through the AC/DC adapter
4. Connect the power cord on the AC outlet, see the below
5. Connectivity of video cable as below

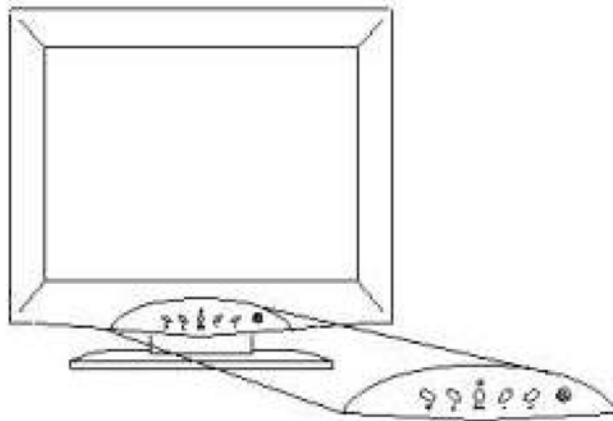


For LCD-1510V 15" LCD monitor connection






CONTROL FUNCTIONS

The Monitor control functions are located on the lower center of the front view side. They are shown in the figure below and described in the following paragraphs.

- **LCD-1510V 15" LCD Monitor**



The control key description

1.  : Power Switch
2.  : Decrement
3.  : Increment or source select
4.  : Move to the next item
/ Brightness control
5.  : Move to the previous item
/ Brightness control
6. **MENU** : Activate the on screen display

DESCRIPTION

1. : **Power switch**

Use the power switch to turn ON or OFF power. We recommend turning your system power on first, then the LCD monitor.

2. **- & + : decrement or increment the value**

The two keys are decrement or increment the value or enter into the sub-menu.

Note: The + key can change the source directly when de-activation OSD screen.

3. & : **Select key / Brightness Control keys**

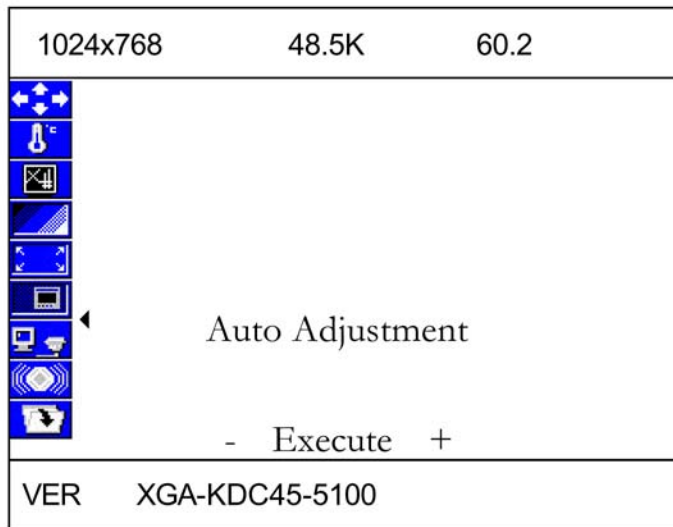
The two keys have two functions, controlled by the MENU key. When activating OSD screen, the two keys are used to select the wanted adjustment items. When de-activating OSD screen, these two keys are used to change the Brightness value.

4. **Menu**

Press the Menu key to activate the on screen display screen. It is a toggle key. Press twice to turn off the on screen display screen. After 30 sec idle time, the OSD screen will automatically turn off.

CHAPTER 3

ADJUSTING THE MONITOR



VGA OSD main screen•

1. Each time, when pressing the menu key , the screen will show as above. You can see the ◀ mark that means the selected item. Then you can change the setting through + or -.key.
2. Pressing Sel key to move the arrow down or up. If the selected item has many option to choose, press – or + to enter into the sub-menu.
3. Then move the Sel key to item you want to change , the item will be highlighted as red characters, then press – or + to change the value.
4. If you finish the setting, press the MENU to key to return to the main OSD, then repeat the item 2 and 3 to do the changes you want



Auto adjustment
Automatically adjusts the phase and position of the LCD monitor for the best view setting



Color temperature setting
provide 9300K, user mode, and 6500K option



Brightness adjustment
Let user adjust the brightness. The range if from 0 to 99



Contrast setup

user to
adjust
and B
and

1024x768	60KHz	75Hz
	<p>Color balance</p> <p>Intensity R</p> <p>Intensity G</p> <p>Intensity B</p> <p>Contrast R</p> <p>Contrast G</p> <p>Contrast B</p> <p>- Execute +</p>	
VER	XGA-KD841-5100	

Provide
separately
each R, G
contrast
intensity

value. When Move to this icon, and press – or + key, then the screen will show below

15"/17"/19" LCD MONITOR

Color balance: the monitor do the white balance automatically.

Intensity R: Adjust the R color intensity, the range is from 0 to 63

Intensity G: Adjust the G color intensity, the range is from 0 to 63

Intensity B: Adjust the B color intensity, the range is from 0 to 63

Contrast R: Adjust the R color contrast value, the range is from 0 to 63

Contrast G: Adjust the G color contrast value, the range is from 0 to 63

Contrast B: Adjust the B color contrast value, the range is from 0 to 63



Geometry setup

We provide Pixel Clock, Phase, H Position, V Position, OSD H Position, OSD V Position and Txt/Gft option to change.

Pixel Clock: Adjust the viewing screen size. The range is from 0 to 99

Phase: Adjust phase tracking to reduce the display flicker. The range is from 0 to 31

H Position: Move the whole screen horizontally. The range is from 0 to 120.

V Position: Move the whole screen vertically. The range is from 0 to 100

OSD H Position: Move the OSD horizontally. The range is from 0 to 15

OSD V Position: Move the OSD screen vertically. The range is from 0 to 15

Txt/Gfx: Select the display mode as 640x480(graphic mode) or 720x400(text mode)



PIP setup

We provide H Position, V Position, PIP H/V ratio, Contrast, Intensity, Tint and Hue option for customer setup the PIP screen

H Position: Move the PIP screen Horizontally. The range is from 0 to 15

V Position: Move the PIP screen Vertically. The range is from 0 to 15

PIP H/V ratio: Provide four option from 1 to 4. When set as 4, it is 1: 1 ratio as original size. Set as 3, it is 1/2 of original one. Set as 2, it is 1/4 of

15"/17"/19" LCD MONITOR

original one. Set as 1, it is 1/8 of original size.

Contrast: Adjust the contrast value of PIP screen. The range is from 0 to 127.

Intensity: Adjust the intensity value of PIP screen. The range is from 0 to 255

Tint: Adjust the Tint value of PIP screen. The range is from 0 to 255

Hue: Adjust the Hue value of PIP screen. The range is from 0 to 255



Source Select

We provide VGA, Composite, S-video, YCbCr, PIP composite, PIP S-video,

PIP YCbCr and PIP off for user's selection.

Note: The PIP function is only valid on video on VGA screen. We can't support video on video screen



Speaker volume control

We provide Volume, Bass, Treble, Mute and PIP audio for audio setup.

Volume: Adjust the speaker volume. The range is from 0 to 32

Bass: Adjust the speaker Bass value. The range is from 0 to 10

Treble: Adjust the speaker Treble value. The range is from 0 to 10

Mute: Enable or disable the Mute function

PIP audio: Enable or disable the PIP mute function



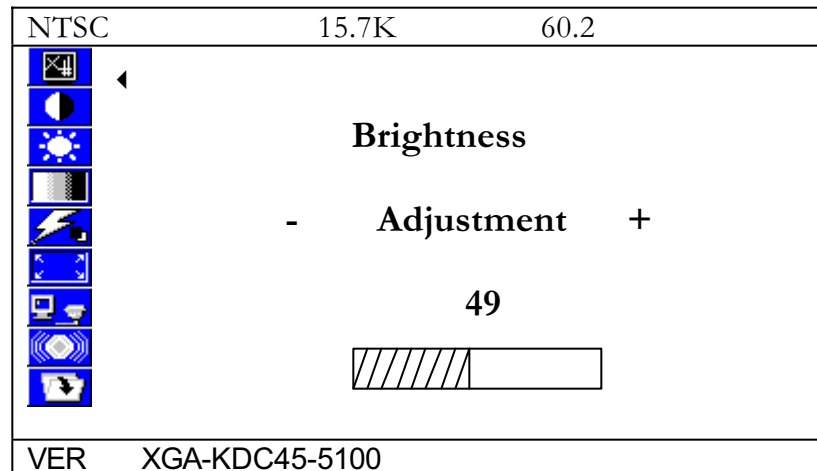
Load the factory default setting.

Restore the factory default setting.

CHAPTER 4

VIDEO ADJUSTMENT

Video OSD Screen



1. Each time, when pressing the menu key , the screen will show as above. You can see the ◀ mark, that means the selected item Then you can change the setting through + or -.key.
2. Pressing Sel key to move the arrow down or up. If the selected item has many option to choose, press – or + to enter into the sub-menu.
3. Then move Sel key to item you want to change , the item will be highlighted with red characters, then press – or + to change the value.
4. If you finish the setting, press the MENU to key to the main OSD, then repeat the item 2 and 3.



Brightness adjustment

Adjust the screen brightness value. The range is from 0 to 99.



Contrast adjustment

Adjust the screen contrast value. The range is from 0 to 127



Intensity adjustment

Adjust the screen intensity value. The range is from 0 to 255



Tint adjustment

Adjust the screen Tint value. The range is from 0 to 127



Hue adjustment

Adjust the screen Hue value. The range is from 0 to 255



Geometry setup

We provide Sharpness, H Position, V Position, OSD H Position, and OSD V position.

Sharpness: Adjust the screen sharpness level. The range is from 0 to 15

H position: Move the screen horizontally. The Range is from 0 to 20

V Position: Move the screen vertically. The range is from 0 to 20

OSD H Position: Move the OSD horizontally. The range is from 0 to 15

OSD V Position: Move the OSD screen vertically. The range is from 0 to 15



Source Select

we provide VGA, Composite, S-video, YCbCr source for user's selection



Speaker volume control

We provide Volume, Bass, Treble, Mute and PIP audio for audio setup.

Volume: Adjust the speaker volume. The range is from 0 to 32

Bass: Adjust the speaker Bass value. The range is from 0 to 10

Treble: Adjust the speaker Treble value. The range is from 0 to 10

Mute: Enable or disable the Mute function

PIP audio: Enable or disable the PIP mute function



Load the factory default setting.

Load the factory default setting

Free Manuals Download Website

<http://myh66.com>

<http://usermanuals.us>

<http://www.somanuals.com>

<http://www.4manuals.cc>

<http://www.manual-lib.com>

<http://www.404manual.com>

<http://www.luxmanual.com>

<http://aubethermostatmanual.com>

Golf course search by state

<http://golfingnear.com>

Email search by domain

<http://emailbydomain.com>

Auto manuals search

<http://auto.somanuals.com>

TV manuals search

<http://tv.somanuals.com>