

**USB2.0**

**128MB~8GB JetFlash™**

# **User's Manual**

**P/N: TS128M~8GJF2A**

( Version 1.1 )

***Transcend***  
***Exceeding Your Expectations***

# Table of Contents

## Introduction

Package Contents .....	1
Features .....	1
System Requirements .....	2

## Driver Installation

Driver Installation for Windows 98SE .....	2
Driver Installation for Windows Me, 2000, and XP .....	4
Driver Installation for Mac OS 9.0 or Later .....	4
Driver Installation for Linux Kernel 2.4.2 or Later .....	4

Uninstall the Win98 Driver .....	4
----------------------------------	---

## To Safely Unplug JetFlash

To Remove JetFlash in Windows 98SE .....	5
To Remove JetFlash in Windows Me, 2000, and XP .....	5
To Remove JetFlash in Mac OS .....	6
To Remove JetFlash in Linux .....	6

## Boot-Up Function

System Requirements for Boot-Up Function .....	7
Boot-Up Function for Windows 98SE and Me .....	7
Format Introduction .....	8
Create One Partition .....	9
Create Two Partitions .....	12

## Security Function

Security Function for Windows 98SE, Me, 2000, and XP .....	15
Use of JetFlash with Security Function Enabled .....	18
Change the Password .....	19
If You Forget the Password .....	19

## PC-Lock Function

Use of JetFlash with PC-Lock Function Enabled .....	20
---	----

Specifications .....	22
----------------------	----

Ordering Information .....	22
----------------------------	----

## JetFlash Limited Warranty

# Introduction

Thank you very much for purchasing Transcend's **JetFlash™**. This small device is designed to expedite exchanging huge amounts of data between any desktop or notebook computer with a USB port. With higher storage capacity and a much faster data transfer rates than other typical portable storage media, it can easily replace floppy diskettes and hard disks. In addition, its mobility, superior data retention ability, and impressive appearance will provide you with a brand-new data-storage experience.

## Package Contents

The **JetFlash** package includes the following items:

- **JetFlash**
- Label
- Neck Strap
- Driver CD
- USB Extension Cable
- Quick Installation Guide

## Features

- Fully compatible with USB 2.0 specification
- Easy Plug and Play installation
- Driverless (Only Windows® 98SE needs the enclosed driver)
- Powered via the USB port. No external power or battery needed
- Security Function: Password protection provided
- Boot-Up Function: Makes **JetFlash** a bootable device
- PC-Lock Function: Makes **JetFlash** a key to lock your computer
- LED indicates the usage status of the **JetFlash**

## System Requirements

Desktop or notebook computer with USB port

One of following operating systems:

- Windows® 98SE
- Windows® Me
- Windows® 2000
- Windows® XP
- Mac™ OS 9.0 or later
- Linux™ Kernel 2.4.2 or later

## Driver Installation

### Driver Installation for Windows 98SE

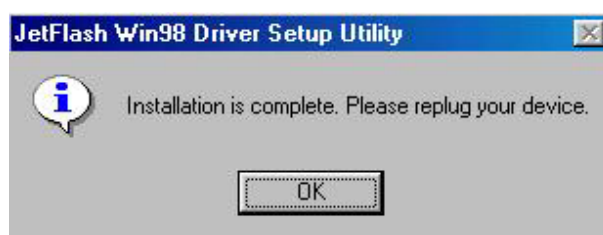
1. Put the Driver CD into the CD-ROM (Auto-Run supported). Click the **Win98 Driver** button.



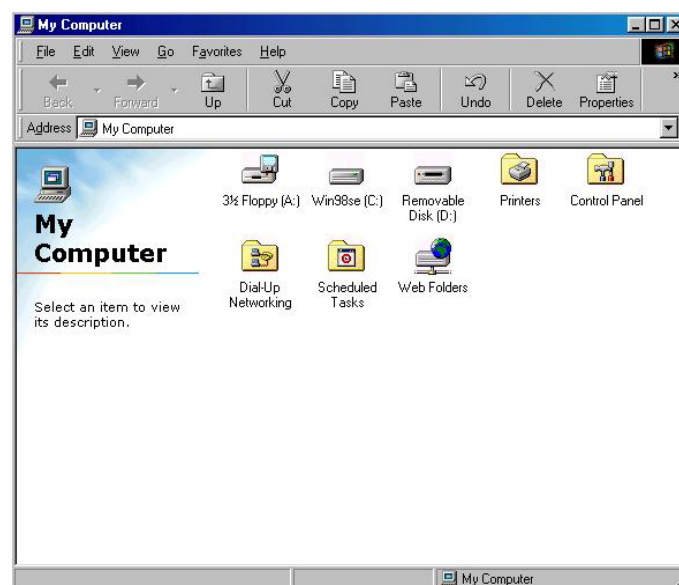
2. Select **Install or update driver**. Click **Start** to continue.



3. After **Install or update driver** is completed, click **OK**.



4. Plug **JetFlash** into an available USB port. A new **Removable Disk** drive with a newly assigned drive letter appears in the **My Computer** window.



## Driver Installation for Windows Me, 2000, and XP

No driver is required. These Windows operating systems have built-in drivers to support **JetFlash**. Simply plug **JetFlash** into an available USB port, and Windows will install the files needed to use your device. A new **Removable Disk** drive with a newly assigned drive letter appears in the **My Computer** window.

## Driver Installation for Mac OS 9.0 or Later

No driver is required. Just plug **JetFlash** into an available USB port and your computer will automatically detect it. A new Disk icon appears on the **Desktop**.

## Driver Installation for Linux Kernel 2.4.2 or Later

No driver is required. Just plug **JetFlash** into the USB port and mount it.

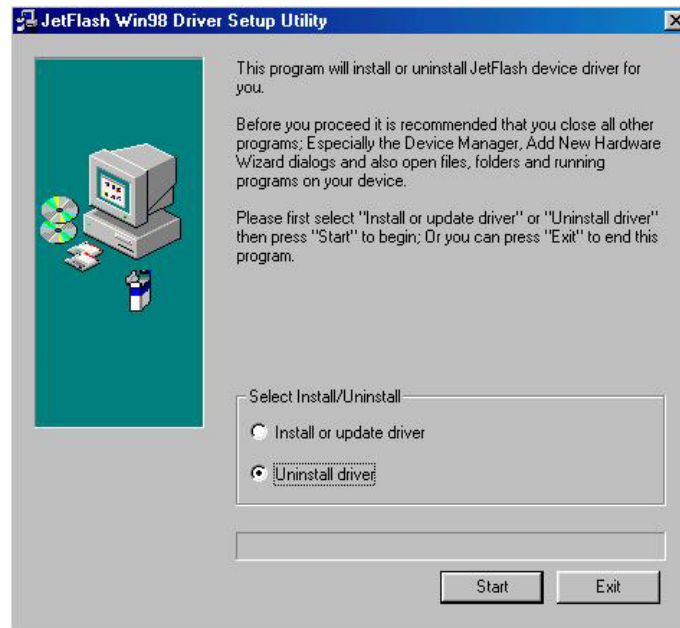
- Example:
1. First create a directory for **JetFlash**  
`mkdir /mnt/jetflash`
  2. Mount **JetFlash**  
`mount -a -t msdos /dev/sda1 /mnt/jetflash`

## Uninstall the Win98 Driver

1. Put the Driver CD into the CD-ROM (Auto-Run supported). Click the **Win98 Driver** button.



2. Select **Uninstall driver**. Click **Start** to continue.



3. After **Uninstall driver** has been completed, click **OK**.



## To Safely Unplug JetFlash

### To Remove JetFlash in Windows 98SE

Unplug **JetFlash** from your system directly when data is not being transferred.

### To Remove JetFlash in Windows Me, 2000, and XP

1. Click the  icon on the system tray.



2. The **Stop USB Mass Storage Device** pop-up menu appears. Click it to continue.



3. Follow the on-screen instructions to complete the procedure.
4. The **Safe To Remove Hardware** message window appears. **JetFlash** is now ready to be unplugged.



## To Remove JetFlash in Mac OS

Drag and drop the Disk icon corresponding to **JetFlash** into the trashcan. Then unplug **JetFlash** from the USB port.

## To Remove JetFlash in Linux

Un-mount the device from the Linux environment.

Example: `umount /mnt/jetflash`



**WARNING:** Before removing your **JetFlash**, please make sure the LED is **off** and **not flashing!** If you remove the **JetFlash** while the LED is flashing, unpredictable damage may occur to the files and/or your **JetFlash** due to a write cache fault.

## Boot-Up Function

For systems that use Windows 98SE or Me, **JetFlash** can be configured to serve as an MS-DOS Boot Disk. Upon completion of the appropriate procedure for your operating system as described below, **JetFlash** can be used to boot up your computer, allowing you to run MS-DOS programs. **JetFlash** can start up your computer by using USB-ZIP or USB-HDD boot-up functions. This does not make **JetFlash** a Rescue Disk for Windows, or put Windows Startup files onto **JetFlash**. After booting with **JetFlash**, the system is started in the MS-DOS command screen. If you wish to enter Windows, you must restart Windows from your hard drive or a previously created Rescue Disk.



## System Requirements for the Boot-Up Function

- A desktop or notebook computer that supports **USB-ZIP** or **USB-HDD** as the **First Boot Device** in **BIOS**
  - **Windows 98SE** or **Me** on the C: drive
  - Any anti-virus program present must be turned off
- ❖ **Boot-Up Function is not supported for Mac or Linux Operating Systems.**
- ❖ **If choosing to use the Boot-Up function, please be aware that there is a maximum capacity size of 512MB (or less) apportioned to the Boot-Up disk sector; this applies to both the USB-ZIP and USB-HDD formats.**
- ❖ **To use the Boot-Up function, you must be logged on to the Windows OS with Administrator privileges.**

## Boot-Up Function for Windows 98SE and Me

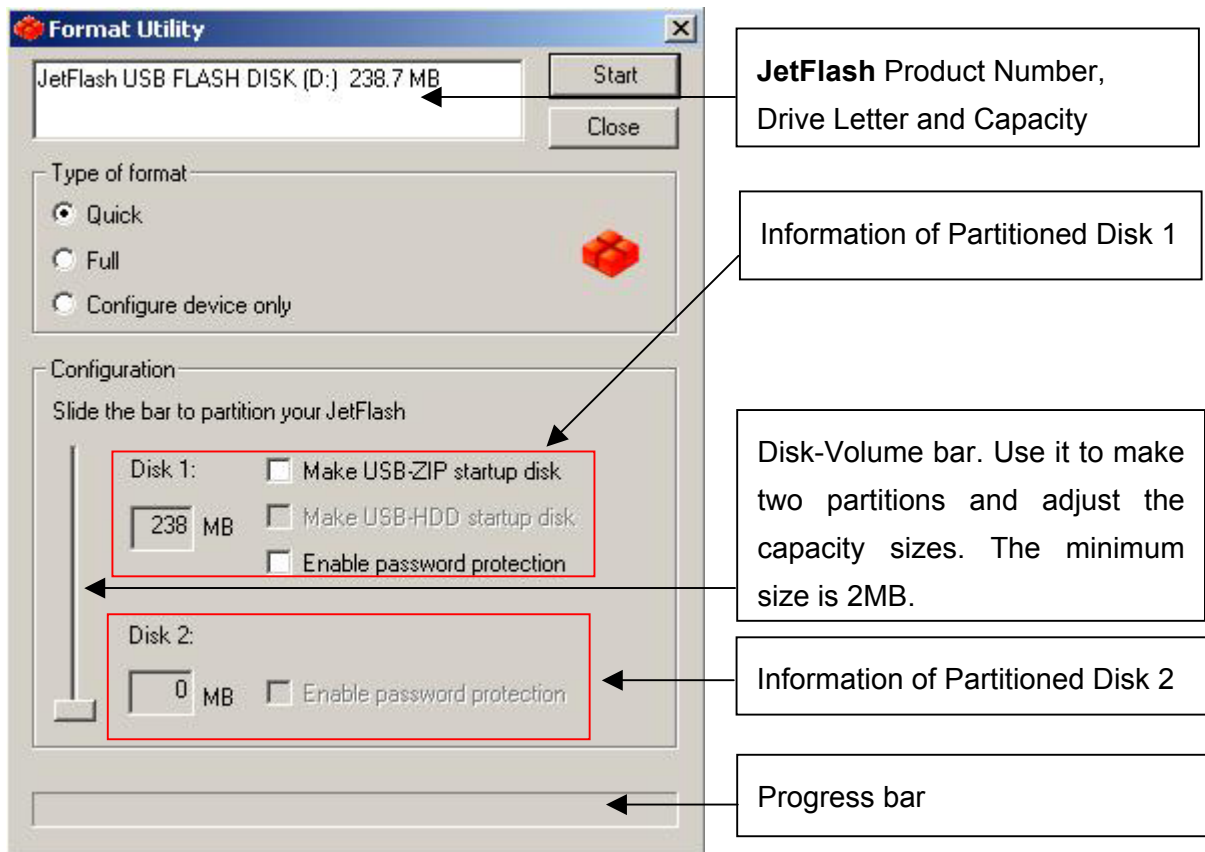
You must run the **mFormat Utility** program on the **JetFlash** to enable this feature. This procedure will reformat the **JetFlash** and erase any data saved to the **JetFlash** memory. In order to avoid loss of data, please backup the files before proceeding. Put the Driver CD into the CD-ROM (Auto-Run supported) and click the **mFormat Utility** button.



When the **mFormat Utility** main window appears, click the **Format** button.



## Format Introduction




## Type of Format

**Quick:** Erase and check blocks at the same time. If there are any bad blocks, mark them as Bad and perform a DOS format.

**Full:** Do a Surface Scan for a Read/Write Check. A Read/Write Check can find if there is any bad block which will be marked as Bad and perform a DOS format.

**Configure device only:** Partition **JetFlash**, and set up password protection and boot-up information.

❖ **Configure device only** cannot be setup under password protection.

 **WARNING:** All data on **JetFlash** will be lost during execution of this procedure!

## Configuration

Slide the **Disk-Volume** bar to adjust the disk size of your **JetFlash**. You can make one disk or two disks by adjusting the volume sizes. The options will change automatically and enable your choice.

### Make an USB-ZIP startup disk:

When the size of **Disk 1** is set to be larger than 2MB. This option can be chosen and it can enable **JetFlash** to boot up the computer in USB-ZIP mode. **Format Utility** will copy boot-up files onto **JetFlash** and set up startup information during formatting.

### Make an USB-HDD startup disk: (Only for Windows 98SE)

When the size of **Disk 1** is set to be larger than 2MB. This option can be chosen and it can enable **JetFlash** to boot up the computer in USB-HDD mode. **Format Utility** will copy boot-up files onto **JetFlash** and set up startup information during formatting.

### Enable password protection:

Choose this option to set up a password during formatting. If you format as two disks, the **Disk 1** is a public disk and **Disk 2** will be password protected.

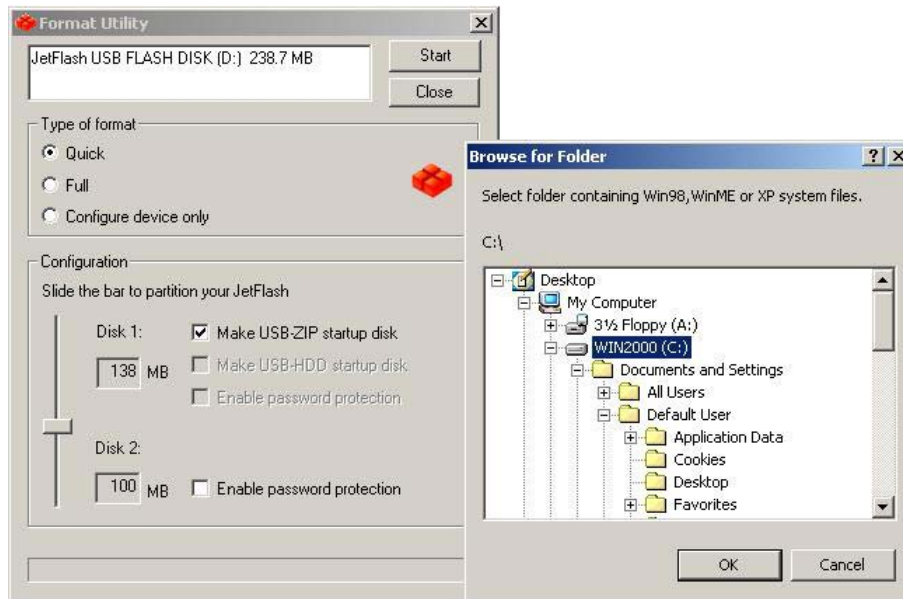
## Create One Partition

Slide the **Disk-Volume** bar all the way down to set **Disk 1** size equal to the total capacity of **JetFlash**. **JetFlash** can be enabled to setup to an **USB-ZIP** or **USB-HDD** boot-up mode as indicated below.

Option	Configuration	BIOS
1	Make USB-ZIP startup disk	USB-ZIP
2	Make USB-HDD startup disk	USB-HDD

## Option 1: Make an USB-ZIP startup disk

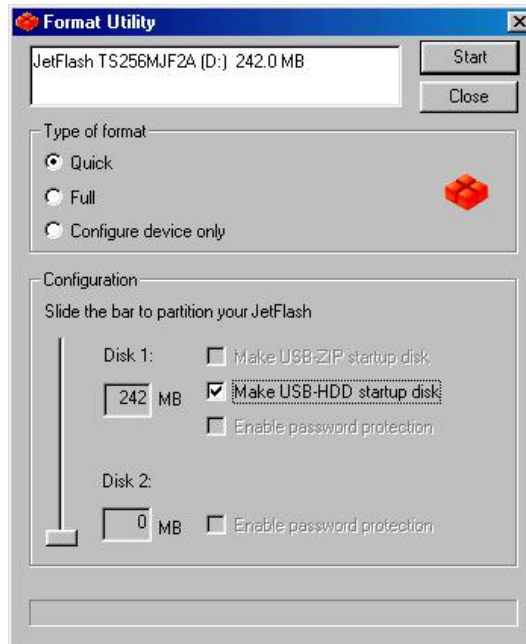
- a. Select **Type of format** (Quick, Full or Configure device only) and **Make USB-ZIP startup disk option**. Click **Start** to continue.



- b. After the completion of the format, you need to re-insert **JetFlash** to enable the settings. Restart your computer and press the **Delete** key (or whatever key combination is correct for your computer) during boot-up to enter **Setup** (CMOS Setup Utility) to reconfigure **BIOS**.
- c. Within the **Advanced BIOS Features** menu, change **First Boot Device** to **USB-ZIP**. **Save & Exit Setup**. Then at **SAVE to CMOS and EXIT (Y/N)?** Type **Y** and press **Enter**.
- d. Now, your system can boot from **JetFlash**. During the boot-up, **JetFlash** will be assigned a drive letter **A** (**A:\>** appears on the screen). If your computer has a floppy drive, it will be assigned drive letter **B**.
- e. You can see boot-up files in **Removable Disk**. Please don't delete or move any of these files, otherwise the boot-up function will fail.

## Option 2: Make an USB-HDD startup disk (Only for Windows 98SE)

- a. Select **Type of format** (Quick, Full or Configure device only) and **Make USB-HDD startup disk** option. Click **Start** to continue.



- b. After the **completion** of the format, you need to re-insert **JetFlash** to enable the settings. Restart your computer and press the **Delete** key (or whatever key combination is correct for your computer) during boot-up to enter Setup (CMOS Setup Utility) to reconfigure **BIOS**.
  - c. **Within the Advanced BIOS Features** menu, change **First Boot Device** to **USB-HDD**. **Save & Exit Setup**. Then at **SAVE to CMOS and EXIT (Y/N)?** Type **Y** and press **Enter**.
  - d. Now, your system can boot up from **JetFlash**. During boot-up, **JetFlash** will be assigned drive letter **C** (**C:\>** appears on the screen). If your computer has a hard Drive, it will be assigned drive letter **D**.
  - e. You can see boot-up files in **Removable Disk**. Please don't delete or move any of these files, otherwise the boot-up function will fail.
- ❖ **Enable password protection** cannot be set in this mode.

## Create Two Partitions

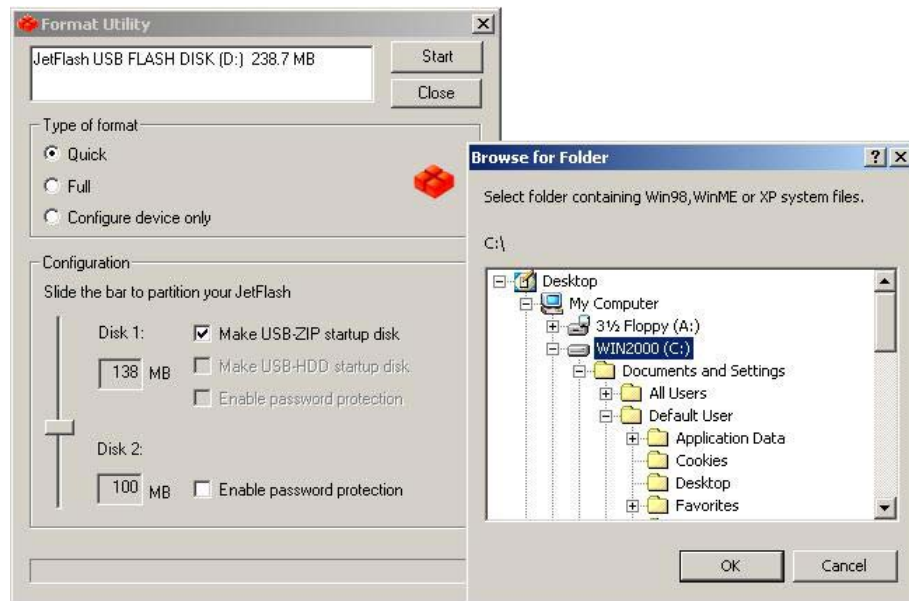
Slide the **Disk-Volume** bar to adjust the size of **Disk1** to fit your needs. The size of **Disk2** will be changed automatically according to the size of **Disk1**, as adjusted by the user. **JetFlash** can be setup to a **USB-ZIP** or **USB-HDD** boot-up mode as indicated below.

Option	Disk 1 Size	Disk 1 Configuration	Disk 2 Configuration	BIOS
1	>2 MB	Make USB-ZIP startup disk	Blank	USB-ZIP
2	>2 MB	Make USB-HDD startup disk	Blank	USB-HDD

- ❖ Windows 2000 cannot recognize the second partition. Please download the Windows 2000 Service Pack 3 or later version from the Microsoft website and install it. Windows 2000 will then be able to recognize the second partition.
- ❖ For Mac computers, only Mac OS 10.1.5 or later can recognize the partitions.
- ❖ Even if two partitions are created, only **Disk1** can be recognized under the MS-DOS prompt after booting up from **JetFlash**.
- ❖ When **Enable password protection** option is selected, **Disk1** will be a public disk and **Disk2** will be a password-protected disk after format.

### Option 1: Make an USB-ZIP startup disk

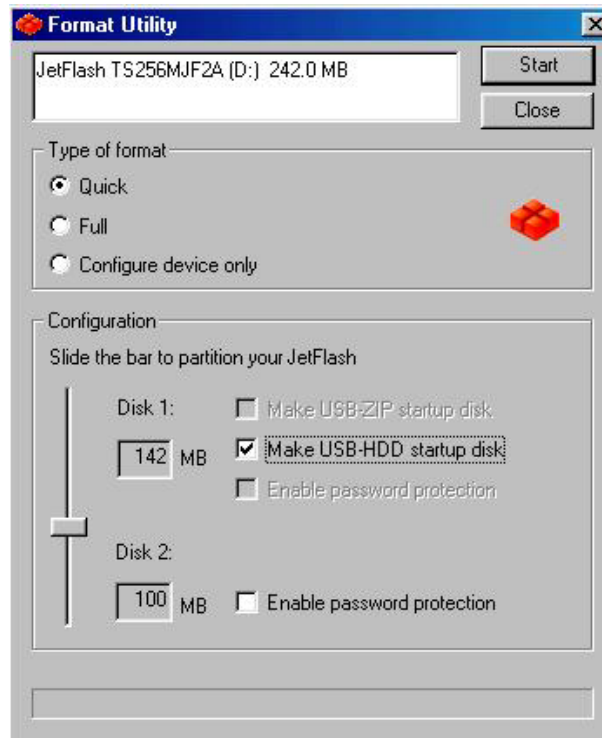
- Select **Type of format** (Quick, Full or Configure device only) and slide the **Disk-Volume** bar to set the size of **Disk1** to fit your needs and **Disk2** will be changed automatically according to the size of **Disk1**. Select **Make USB-ZIP startup disk** on **Disk 1**. Click **Start** to continue.



- b. After the **completion** of the format, you need to re-insert **JetFlash** to enable the settings. Restart your computer and press the **Delete** key (or whatever key combination is correct for your computer) during boot-up to enter **Setup** (CMOS Setup Utility) to reconfigure **BIOS**.
- c. Within the **Advanced BIOS Features** menu, change **First Boot Device** to **USB-ZIP**. **Save & Exit Setup**. Then at **SAVE to CMOS and EXIT (Y/N)?** Type **Y** and press **Enter**.
- d. Now, your system can boot up from **JetFlash**. During boot-up, **JetFlash** will be assigned drive letter **A** (**A:\>** appears on the screen). If your computer has a floppy drive, it will be assigned drive letter **B**.
- e. You can see boot-up files in **Removable Disk**. Please don't delete or move any of these files, otherwise the boot-up function will fail.

## Option 2: Make an USB-HDD startup disk (Only for Windows 98SE)

- a. Select **Type of format** (Quick, Full or Configure device only) and slide the **Disk-Volume** bar to set the size of **Disk1** to fit your needs and **Disk2** will be changed automatically according to the size of **Disk1**. Select **Make USB-ZIP startup disk** on **Disk 1**. Click **Start** to continue.



- b. After the **completion** of the format, you need to re-insert **JetFlash** to enable the settings. Restart your computer and press the **Delete** key (or whatever key combination is correct for your computer) during boot-up to enter **Setup** (CMOS Setup Utility) to reconfigure **BIOS**.
- c. Within the **Advanced BIOS Features** menu, change **First Boot Device** to **USB-HDD**. **Save & Exit Setup**. Then at **SAVE to CMOS and EXIT (Y/N)?** Type **Y** and press **Enter**.
- d. Now, your system can boot up from **JetFlash**. During boot-up, **JetFlash** will be assigned drive letter **C** (**C:\>** appears on the screen). If your computer has a hard drive, it will be assigned drive letter **D**.
- e. You can see boot-up files in **Removable Disk**. Please don't delete or move any of these files, otherwise the boot-up function will fail.



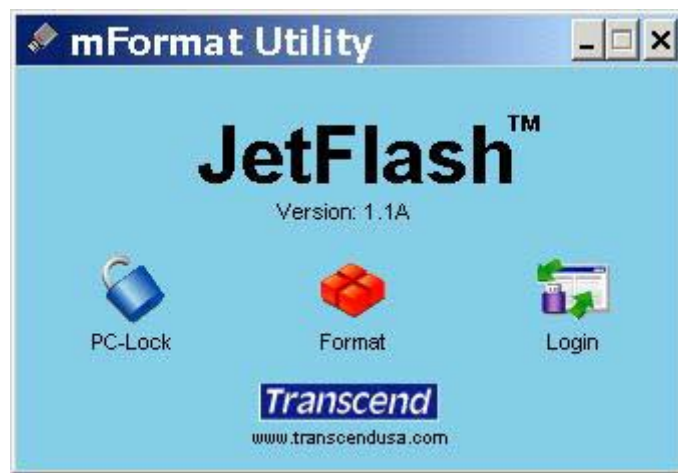
## Security Function

❖ The Security Function is not supported by Mac or Linux Operating Systems.

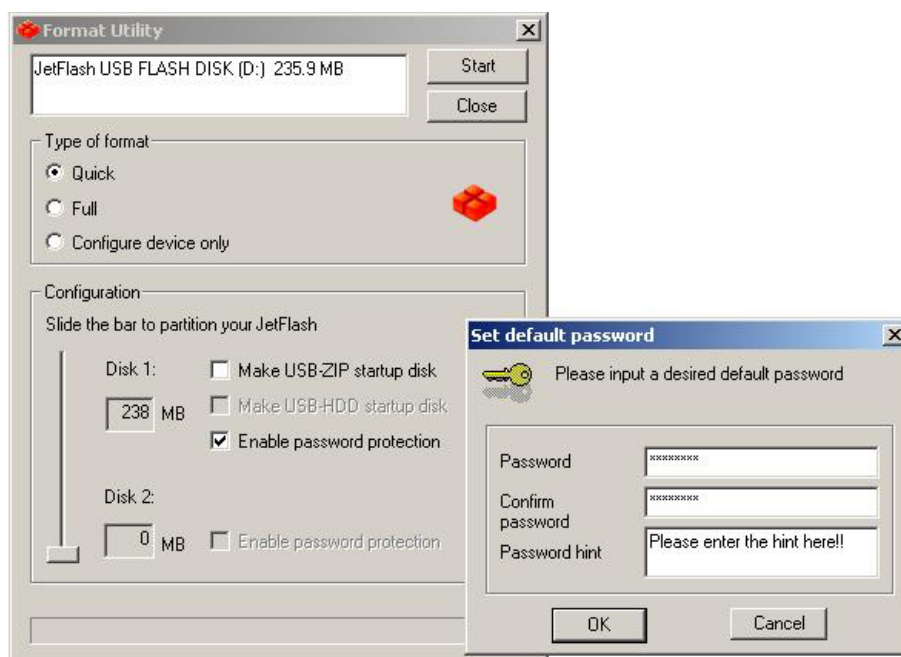
### Security Function for Windows 98SE, Me, 2000, and XP

#### Create Single Partition

1. You must run the **mFormat Utility** program on the **JetFlash** to enable this feature. This procedure will reformat the **JetFlash** and erase any data saved to the **JetFlash** memory. In order to avoid loss of data, please backup the files before proceeding through this procedure. Insert **JetFlash** and run the **mFormat Utility** program. Click **Format** button.



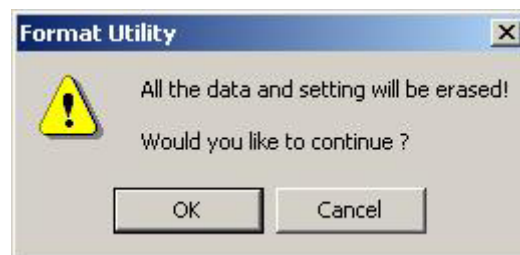
2. Select the **Type of format** (Quick, Full or Configure device only) and **Enable password protection**.



3. **Set default password** window will appear and require you to enter the password. Enter the **Password** and the **Password hint** you want, and click **OK**.



4. Return to the **Format Utility** window. Click **Start** to continue.
5. Make sure you have performed a backup of the files on your **JetFlash**. Click **OK** to continue or **Cancel** to exit.

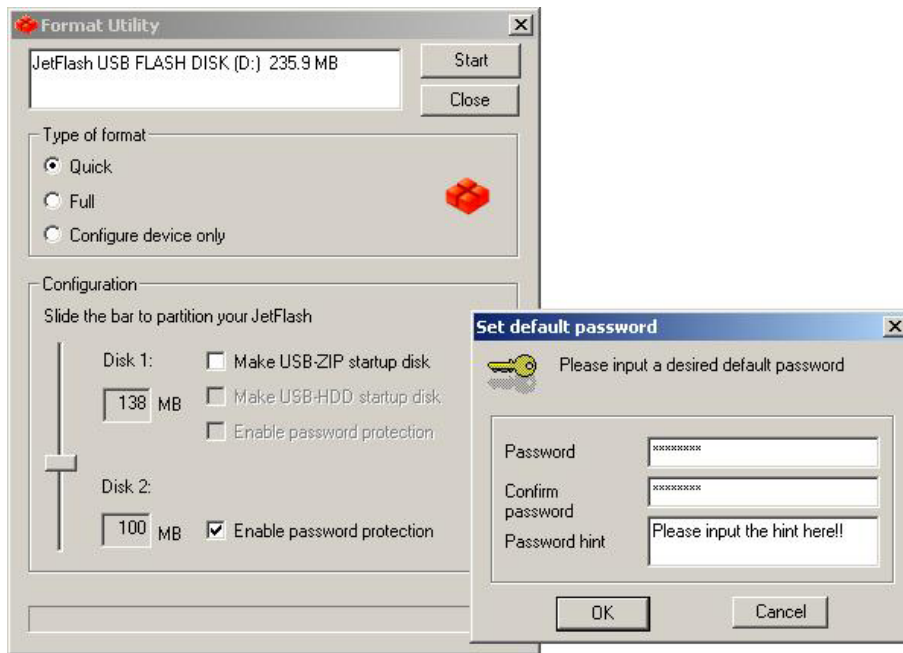


6. After clicking **OK**, the security function will be enabled.



## Create Two Partitions

1. Select **Type of format** (Quick, Full or Configure device only) and slide the **Disk-Volume** bar to set the size of **Disk1** to fit your needs and **Disk2** will be changed automatically according to the size of **Disk1**. Then click on **Enable password protection** on **Disk2**.

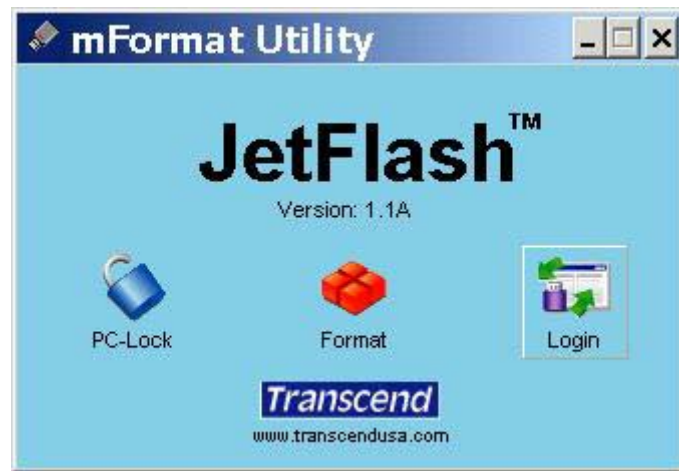



2. **Set default password** window will appear and require you to enter the password. Enter the **Password** and the **Password hint** you want, and click **OK**.
3. Return to the **Format Utility** window. Click **Start** to continue.
4. After the **completion** of the format, you need to re-insert **JetFlash** to enable the settings.



## Use of JetFlash with Security Function Enabled

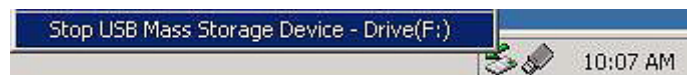
1. Insert **JetFlash** and run the **mFormat Utility** program. Click the **Login** button.



2. Enter the correct password to access data on the secured disk.
3. When you finish, you need to safely remove **JetFlash** to protect data (procedure described as below).
4. Click the  icon on the system tray.



5. The **Stop USB Mass Storage Device** pop-up window appears. Click it to continue.

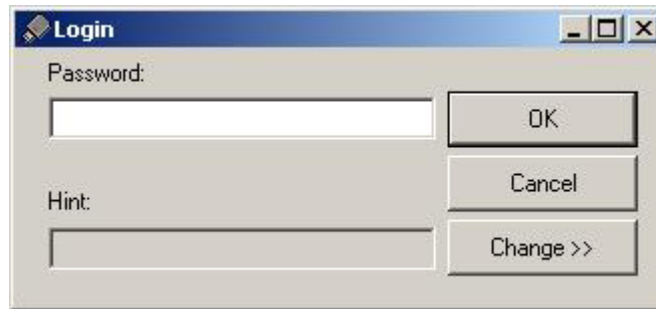


6. Follow the on-screen instructions to complete the procedure.
7. The **Safe To Remove Hardware** message window appears. **JetFlash** is now ready to be unplugged.



## Change the Password

1. Insert **JetFlash**, run the **mFormat Utility** program and click **Login**, the **Login** window appears.



2. Click **Change >>** to continue.



3. Key in the **New password**, **Re-Enter new password** and a **Hint**.
4. Click **OK** to complete the change of password.

## If You Forget the Password

If you forget your password, you can use the password hint to remember it. If you cannot recall the password using the password hint, then all you can do is run the **Format Utility** program to reformat **JetFlash** and set up a new password. If you had previously created a partition on the **JetFlash** you will have a chance to make a backup copy of the data stored on the public disk before re-formatting the **JetFlash**.



**WARNING:** All data on **JetFlash** will be lost during execution of this procedure!

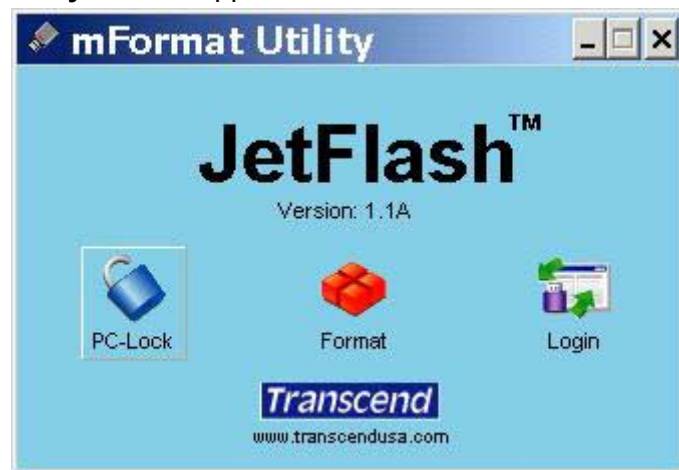
## PC-Lock Function

Once the PC-Lock function is enabled, you can use the **JetFlash** as a key to lock your computer, protecting it from being used by unauthorized persons.

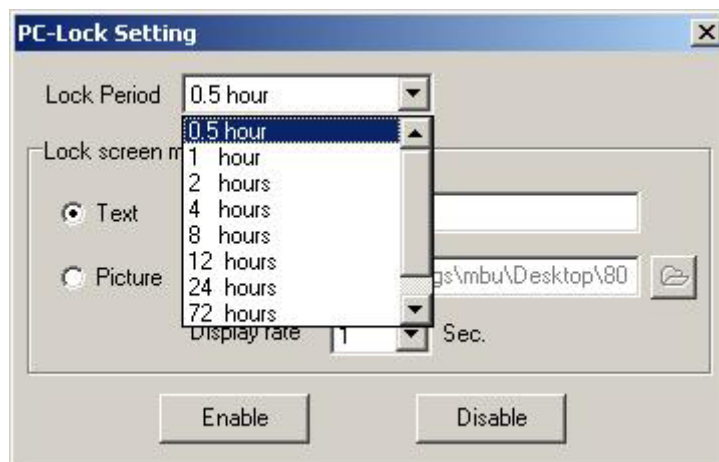
- ❖ The PC-Lock function is not supported on Mac and Linux Operating Systems.
- ❖ To use the PC-Lock function, you must login into the Windows OS with **Administrator** rights.

### Use of JetFlash with PC-Lock Function Enabled

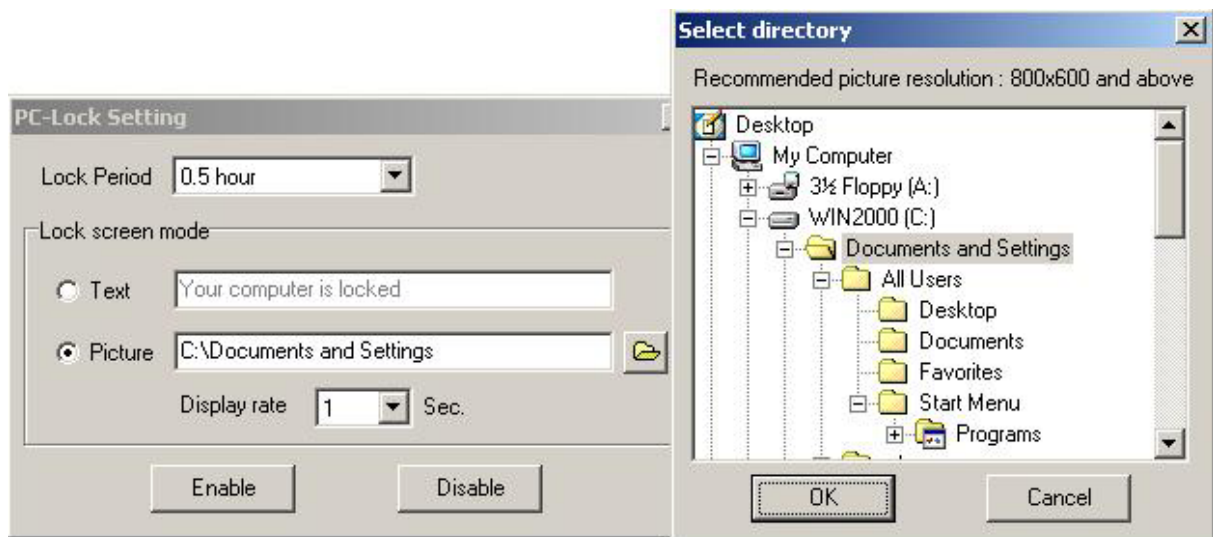
1. Put the Driver CD into the CD-ROM drive (Auto-Run supported). Plug your **JetFlash** into an available USB port of your computer and select the **mFormat Utility** Tool button.
2. The **mFormat Utility** window appears. Select the **PC-Lock** button.



3. The **PC-Lock Setting** window will appear. Select the **Lock Period**.



4. Select **Lock Screen Mode (Text mode or Picture mode)** to protect your computer from use by others.



5. Then click on the **Enable** button to enable the **PC-Lock** function.

## Specifications

- Size: 75mm x 25mm x 11mm (Mini Size)  
88mm x 33mm x 15mm (Normal Size)
- Weight: 15 g (Mini Size)  
24 g (Normal Size)
- Data Retention: Up to 10 years
- Erase Cycles: > 100,000 times
- Speed: Read 10.0 MB/sec (Max.)  
Write 8.0 MB/sec (Max.)
- Certificates: CE, FCC, BSMI

## Ordering Information

<u>Transcend P/N</u>	<u>Memory Size</u>	<u>Feature</u>
TS128MJF2A	128MB	Silver, Mini Size
TS256MJF2A	256MB	Silver, Mini Size
TS512MJF2A	512MB	Silver, Mini Size
TS1GJF2A	1GB	Silver, Mini Size
TS2GJF2A	2GB	Silver, Mini Size
TS4GJF2A	4GB	Silver, Mini Size
TS8GJF2A	8GB	Silver, Normal Size



## JetFlash Limited Warranty

**“Above and beyond” is the standard we set ourselves for customer service at Transcend. We consistently position ourselves to be significantly above the industry norm. It’s all part of our commitment to Customer Satisfaction.**

All Transcend Information, Inc. (Transcend) products are warranted and tested to be free from defects in material and workmanship and to conform to the published specifications. Should your Transcend JetFlash malfunction during normal use in its recommended environment due to improper workmanship or materials within the warranty period, Transcend will repair or replace your product with a comparable product. This warranty is subject to the conditions and limitations set forth herein.

**Duration of Warranty:** Transcend JetFlash are covered by this warranty for a period of two (2) years from the date of purchase. Transcend will inspect the product and make the determination as to whether the product is eligible for repair or replacement. The decision by Transcend regarding eligibility of the product for repair or replacement will be final and binding. Transcend reserves the right to provide a functionally equivalent refurbished replacement product.

**Limitations:** This warranty does not apply to products that fail due to accident, abuse, mishandling, improper installation, alteration, acts of nature, improper usage, or problems with electrical power. Transcend JetFlash must be used with devices that conform to the recommended industry standards. Transcend will not be liable for damages resulting from a third party device that causes the Transcend product to fail. Transcend shall in no event be liable for any consequential, indirect, or incidental damages, lost profits, lost business investments, lost goodwill, or interference with business relationships as a result of lost data. Transcend is also not responsible for damage or failure of any third party equipment, even if Transcend has been advised of the possibility. This limitation does not apply to the extent that it is illegal or unenforceable under applicable law.

**Disclaimer:** The foregoing limited warranty is exclusive, with no other warranties, implied or statutory, including, but not limited to any implied warranty of merchantability or fitness for a particular purpose. This warranty is not affected in any part by Transcend providing technical support or advice.

**Online Registration:** To expedite warranty service, please register your Transcend Product within 30 days of purchase.

**Register online at <http://www.transcendusa.com/TsClub/index.asp>.**

**Transcend**  
*Exceeding Your Expectations*

**Transcend Information, Inc.**

**[www.transcendusa.com](http://www.transcendusa.com)**

The Transcend logo is a registered trademark of Transcend Information, Inc.  
\*All logos and marks are trademarks of their respective companies.

## Free Manuals Download Website

<http://myh66.com>

<http://usermanuals.us>

<http://www.somanuals.com>

<http://www.4manuals.cc>

<http://www.manual-lib.com>

<http://www.404manual.com>

<http://www.luxmanual.com>

<http://aubethermostatmanual.com>

Golf course search by state

<http://golfingnear.com>

Email search by domain

<http://emailbydomain.com>

Auto manuals search

<http://auto.somanuals.com>

TV manuals search

<http://tv.somanuals.com>