

USB2.0

StoreJet™ 3.5

User's Manual

Transcend
Exceeding Your Expectations

Table of Contents

Introduction	1
Package Contents.....	1
Features.....	2
System Requirements.....	2
Safety.....	3
Safety Precautions	3
General Use.....	3
Backing Up Data.....	3
Transporting.....	3
Power.....	3
Reminders.....	3
Product Overview.....	4
Installing a Hard Drive	5
Driver Installation	8
Driver Installation for Windows® 98SE.....	8
Driver Installation for Windows® Me, 2000 and XP.....	9
Driver Installation for Mac™ OS 9.0, or Later.....	9
Driver Installation for Linux™ Kernel 2.4, or Later.....	9
Use with a Computer.....	10
Connecting to a Computer	10
Disconnecting from a Computer.....	12
Removing the StoreJet™ 3.5 in Windows® 98SE.....	12
Removing the StoreJet™ 3.5 in Windows® Me, 2000 and XP.....	12
Removing the StoreJet™ 3.5 in Mac™ OS 9.0, or Later.....	12
Remove the StoreJet™ 3.5 in Linux™ Kernel 2.4, or Later.....	12
Formatting the Hard Drive	13
Troubleshooting	15
Specifications	17
Warranty.....	18
Terminology.....	19

Introduction

Congratulations on purchasing **Transcend's StoreJet™ 3.5**. This portable, Hi-Speed USB storage device is the perfect data management system for uploading, downloading, storing, transferring and backing up your vital data and information. With a huge storage capacity and Hi-Speed USB 2.0 data transfer rates, the **StoreJet™ 3.5** is ideal for storing and transferring your files, folders, documents, photos, music and e-work between it and any desktop, or notebook computer.

Package Contents

The **StoreJet™ 3.5** package includes the following items:

- StoreJet™ 3.5



- Software CD



- USB B-Type to USB A-Type cable



- Power Adapter



- Power Cable



- Vertical stand



- Quick Instruction Guide



- Screws x 4



Features

- Hi-Speed USB 2.0 compliant and USB 1.1 backwards compatible
- Easy Plug and Play installation
- Hi-Speed data transfer rates up to 480Mbps (60MB) per second
- Aluminum case
- LED indicates Power On and data transfer activity
- Driverless (Only Windows® 98SE needs the enclosed driver)

System Requirements

Desktop or notebook computer with a working USB port.

One of following Operating Systems (OS):

- Windows® 98SE
 - Windows® Me
 - Windows® 2000
 - Windows® XP
 - Mac™ OS 9.0, or later
 - Linux™ Kernel 2.4, or later
-

Safety Precautions

These usage and safety guidelines are **IMPORTANT!** Please follow them carefully.



Your **StoreJet™ 3.5** is connected to a computer using a **USB B-Type (on the StoreJet™)** to **USB A-Type (on a Desktop/Notebook)** cable. Please ensure that you connect the cable ends to the ports correctly.

General Use

- Carefully unpack the contents of the **StoreJet™** package.
- During operation avoid exposing your **StoreJet™** to temperature extremes above 60°C, or below 5°C.
- Do not drop your **StoreJet™**.
- Do not allow your **StoreJet™** to become damp or wet from water or any other liquids.
- Do not use a damp/wet cloth to wipe or clean the exterior case.
- Do not use or store your **StoreJet™** in any of the listed environments:
 - Direct sunlight
 - Next to an air conditioner, electric heater or other heat sources
 - In a closed car that is in direct sunlight

Backing Up Data

- **Transcend does NOT take any responsibility for data loss, or damage during operation.** If you decide to store data on your **StoreJet™** we strongly advise that you regularly backup the data to a computer, or other storage medium.
- To ensure High-Speed USB 2.0 data transfer rates when using your **StoreJet™ 3.5** with a computer, please check the computer has the relevant USB drivers. If you are unsure on how to check this, please consult the computer or motherboard User's Manual for USB driver information.
- The **StoreJet™ 3.5**'s internal hard drive comes formatted for NTFS. If you want to backup a Mac computer you will need to format the drive for HFS+ using the Mac Disk Utility.

Transporting

- Do not pack your **StoreJet™ 3.5** into luggage without the proper padded support. Other items in the luggage may damage your **StoreJet™ 3.5** without the proper protection.
- Avoid squeezing your **StoreJet™ 3.5** to prevent damage to the internal HDD.
- Avoid placing objects onto your **StoreJet™ 3.5** to prevent damaging it.

Power

- The **StoreJet™ 3.5** is powered from the mains using the Power Adapter.
- Ensure nothing is resting on the Power cables and that the cables are not located where they can be tripped over or stepped on.

Reminders

Always follow the procedures in the "**Disconnecting from a Computer**" section to remove your **StoreJet™** from a computer.

Product Overview

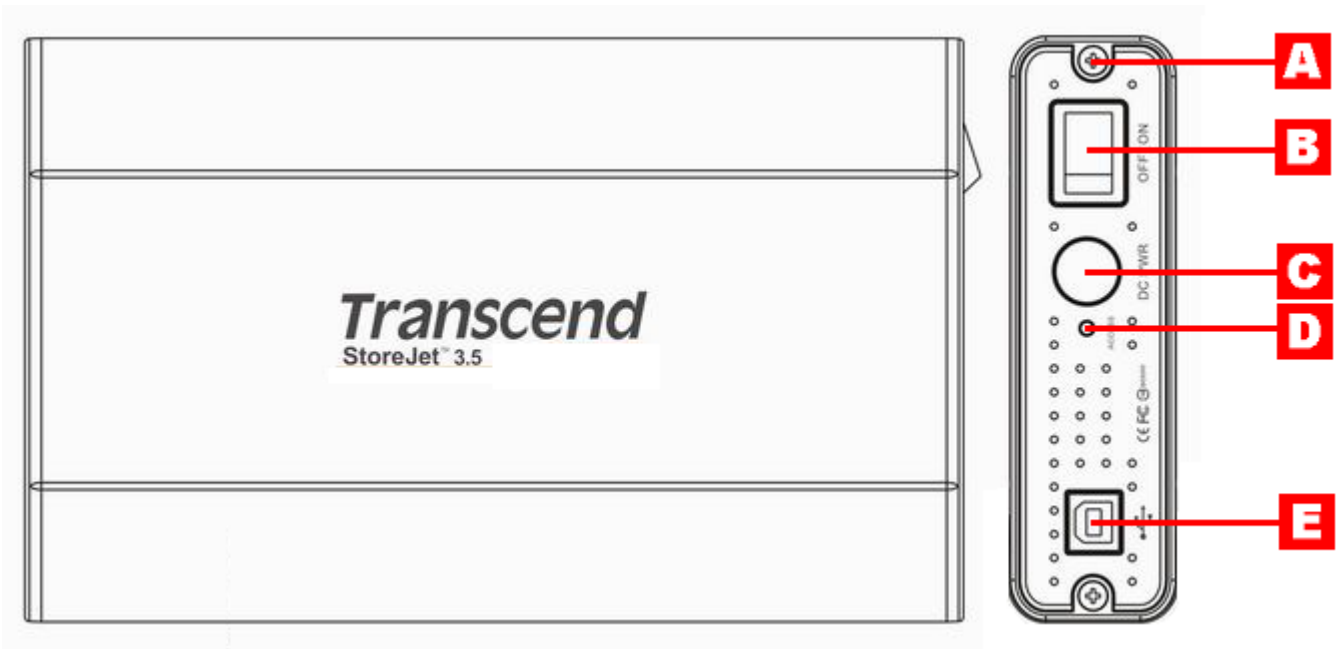


Figure 1. StoreJet 3.5

- A** Screws x 2
- B** Power ON/OFF Switch
- C** Power Jack
- D** LED
- E** USB B-Type Port

Installing a Hard Drive



Your StoreJet™ 3.5 HDD Enclosure is capable of supporting an IDE, or a SATA Hard Disk Drive. It is **IMPORTANT!** that you match and install the correct Hard Drive to the correct enclosure.

Installing a Hard Drive

If you purchased a **Transcend StoreJet™ 3.5** HDD Enclosure that does not have a Hard Disk Drive already installed, please read this section, otherwise you can skip to the “**Driver Installation**” section. Your **Transcend StoreJet™ 3.5** HDD Enclosure is capable of supporting an IDE, or a SATA Hard Drive, it is important that you match and install the correct hard drive to the correct enclosure. You can identify the type of enclosure by its part number. Enclosures with the Transcend part number **TS0GSJ35-S** support SATA Drives, while enclosures with the part number **TS0GSJ35** support IDE Drives.

1. Open the **StoreJet™ 3.5** by removing the two screws from either side of the top cover, as indicated in the diagram.



Figure 2. Remove the screws from the top cover

2. Remove the cover revealing a control board adapter; this converts the IDE, or SATA interface connector of the hard drive to a USB 2.0 B-Type interface. Slide out the control board.

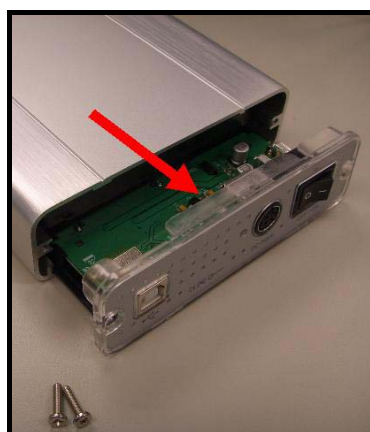


Figure 3. Remove the top cover revealing the IDE/SATA adapter

- 3. IDE Connection:** Carefully line up and plug in the IDE connector on the control board to the hard drive. Do **NOT** force the IDE connector into the hard drive and do **NOT** insert the connector at an angle, otherwise you may damage it. After you have connected the control board, attach the power cable to the IDE hard drive.

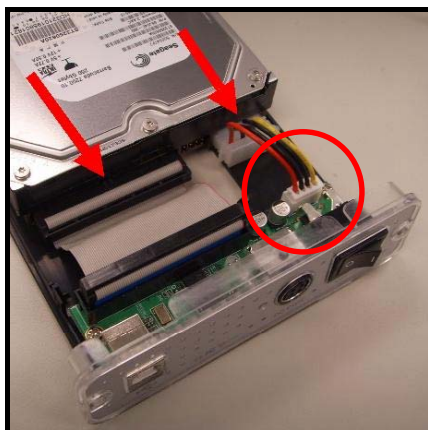


Figure 4. Connect the IDE control board and power cable to the IDE hard drive

- 4. SATA Connection:** Carefully line up and plug in the SATA connector on the control board to the hard drive. Do **NOT** force the SATA connector into the hard drive and do **NOT** insert the connector at an angle, otherwise you may damage it.



Figure 5. Connect the SATA hard drive to the SATA adapter

- 5.** Using the screws that are provided, secure the hard drive to the control board's plastic panel; this will allow you to slide the hard drive into the **StoreJet™ 3.5** more easily.



Figure 6. Secure the hard drive to the panel using the provided screws

- Carefully reinsert the IDE/SATA adapter and its connected 3.5" hard drive into the **StoreJet™ 3.5** and reattach the screws to the top cover.

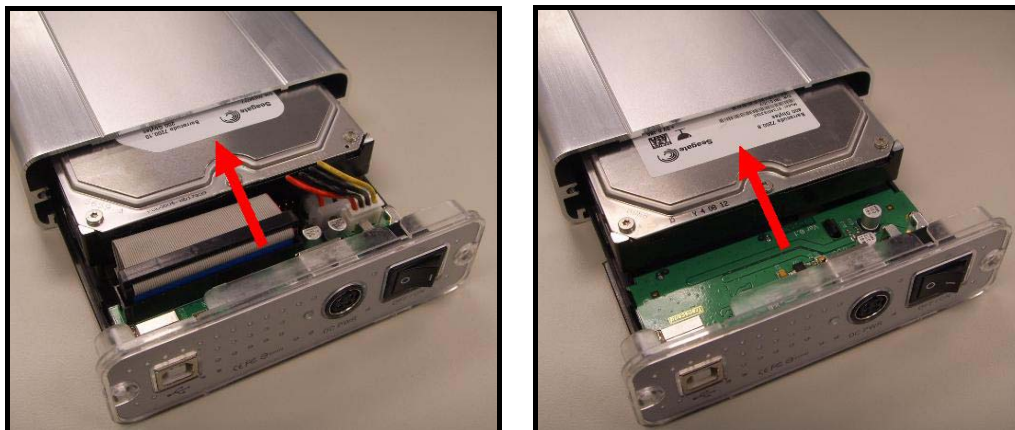


Figure 7. Reinsert the IDE/SATA adapter plus drive and reattach the screws

Driver Installation



WARNING! The StoreJet™ 3.5's internal hard drive comes formatted for NTFS. Windows® 98SE **CANNOT** support the NTFS file system, please reformat the hard drive to the FAT file system, see the [“Formatting the Hard Drive”](#) section.

Driver Installation for Windows® 98SE

1. Put the Software CD into the CD-ROM (Auto-Run supported). Select IDE, or SATA* and click on the **“Win98SE Driver”** Installation button.



Figure 8. Windows 98SE Driver Installation

- ❖ SATA Win98SE Driver installation is completed automatically as a background process.
2. The InstallShield Wizard will guide you through the installation process. Follow the on-screen instructions to complete the driver installation. Click on the **“OK”** button to complete the installation.



Figure 9. InstallShield Wizard

3. When the Wizard has successfully finished installing the drivers, you will be prompted to restart the computer now, or later. Select either of the options and click on the **“Yes”** button to exit the wizard and restart the computer.

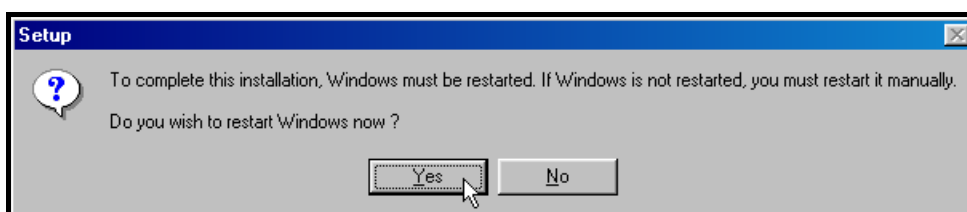


Figure 10. Driver installation completion

4. After the drivers are installed onto the computer and system is restarted, plug the **StoreJet™ 3.5** into

an available USB port. Connect the Power Adapter to the **StoreJet™ 3.5** enclosure's power jack and connect the power cable to the adapter, then turn on the unit's power switch. The **StoreJet™ 3.5's** LED will light up. The "**New Hardware Found**" dialogue box will appear.



Figure 11. Found New Hardware

5. The computer will automatically detect the **StoreJet™ 3.5** and a new **Local Disk** drive with a newly assigned drive letter representing the **StoreJet™ 3.5** will appear in the **My Computer** window.

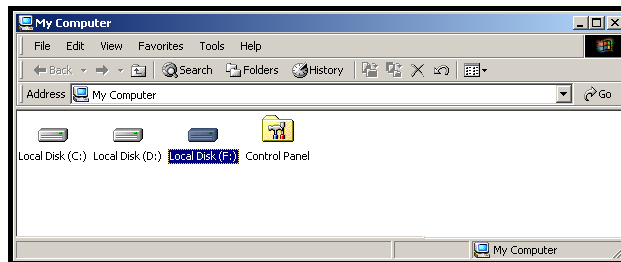


Figure 12. *F is an example drive letter, the letter in your "My Computer" window may differ

Driver Installation for Windows® Me, 2000 and XP

No drivers are required. These Windows® Operating Systems have built-in drivers to support the **StoreJet™ 3.5**. Plug your **StoreJet™** into an available USB port. Connect the Power Adapter to the **StoreJet™ 3.5** enclosure's power jack and connect the power cable to the adapter, then turn on the unit's power switch. Windows will install the necessary files and a new **Local Disk** drive with a newly assigned drive letter representing the **StoreJet™ 3.5** will appear in the **My Computer** window.

Driver Installation for Mac™ OS 9.0, or Later

No drivers are required. Plug your **StoreJet™ 3.5** into an available USB port. Connect the Power Adapter to the **StoreJet™ 3.5** enclosure's power jack and connect the power cable to the adapter, then turn on the unit's power switch and your computer will automatically detect it.



Figure 13. Mac Driver Installation

Driver Installation for Linux™ Kernel 2.4, or Later

No drivers are required. Plug your **StoreJet™ 3.5** into a USB port. Connect the Power Adapter to the **StoreJet™ 3.5** enclosure's power jack and connect the power cable to the adapter, then turn on the unit's power switch and mount it.

1. First create a directory for the **StoreJet™ 3.5**.

Example: `mkdir /mnt/Storejet`

2. Then, mount the **StoreJet™ 3.5**.

Example: `mount -a -t msdos /dev/sda1 /mnt/Storejet`

Connecting to a Computer

If you want to use the **StoreJet™ 3.5** as an External Hard Disk Drive to upload/download data to, or from your computer you need to connect it to a USB port on the computer using the provided USB B-Type to USB A-Type cable.



WARNING! If using Windows® 98SE, please ensure you have reformatted the hard drive to the FAT file system (see “[Formatting the Hard Drive](#)”) and installed the necessary driver before plugging in your StoreJet™.

1. Plug the small end of the USB B-Type to USB A-Type cable into the USB B-Type port on the StoreJet™ 3.5.

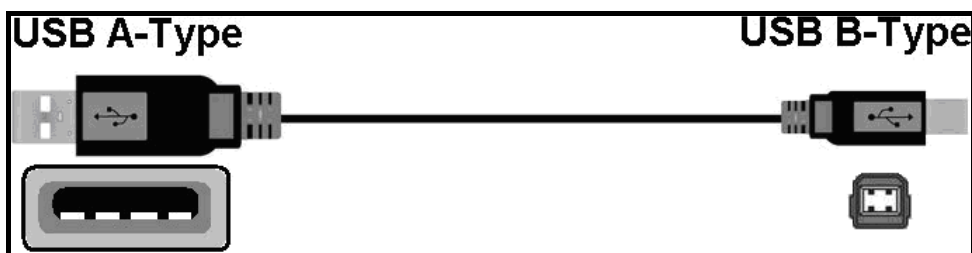


Figure 14. USB B-Type to USB A-Type Cable

2. Plug the large end of the cable into an available USB port on your desktop, or notebook computer.



WARNING! Keep in mind that the StoreJet™ must be powered from the mains using the Power Adapter.

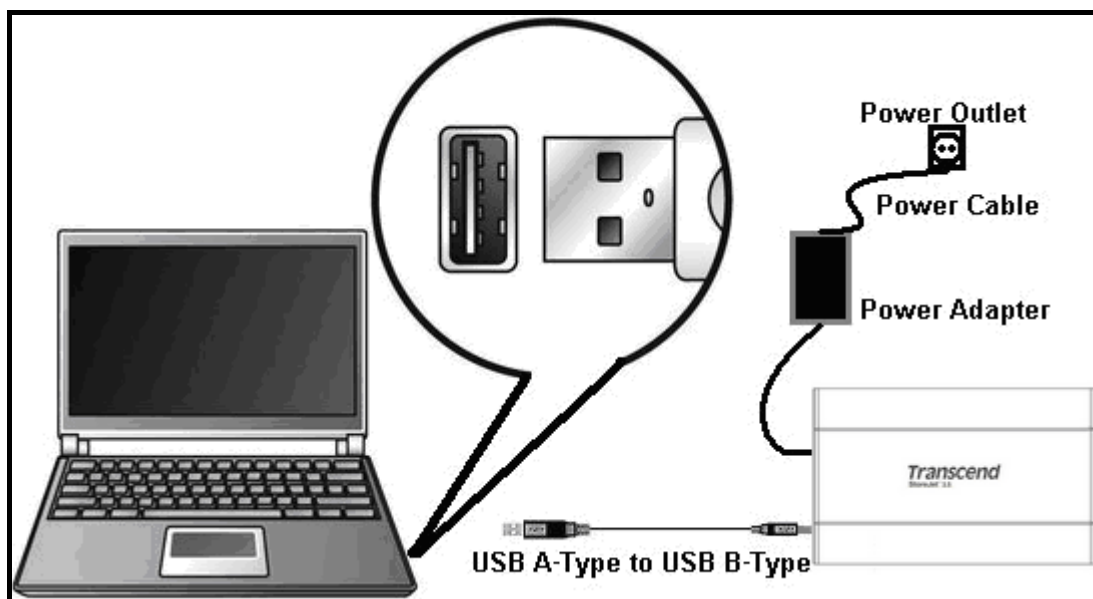


Figure 15. Connecting to a Computer

3. Connect the Power Adapter to the **StoreJet™ 3.5** enclosure's power jack and connect the power cable to the adapter, then turn on the unit's power switch.

- When the **StoreJet™ 3.5** is successfully connected to a computer and powered on, the **StoreJet™**'s Power LED will light up, a new **Local Disk** drive with a newly assigned drive letter representing the **StoreJet™ 3.5** will appear in the **My Computer** window and a Hardware icon will appear on the Windows System Tray. The **StoreJet™ 3.5**'s internal hard drive comes formatted for NTFS.

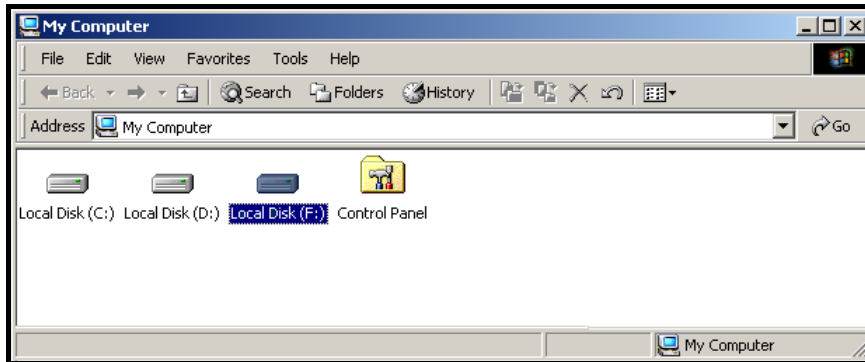


Figure 16. *F: is an example drive letter, the letter in your "My Computer" window may differ

- At this stage the **StoreJet™ 3.5** is a **Peripheral** device and can be used as an external hard drive to upload/download data. You can download data to the **StoreJet™ 3.5** simply by dragging and dropping files, or folders onto the **Local Disk** drive letter that represents the **StoreJet™ 3.5**.

Disconnecting from a Computer



NEVER disconnect the StoreJet™ from a Computer, or turn off the power switch when its LED is flashing.

Removing the StoreJet™ 3.5 in Windows® 98SE

Unplug your StoreJet™ 3.5 from your system directly when data is not transferring and turn off the power switch.

Removing the StoreJet™ 3.5 in Windows® Me, 2000 and XP


1. Select the **Hardware**  icon on the system tray.
2. The **Safely Remove Hardware** pop-up window will appear. Select it to continue.



Figure 17. Safely Remove Hardware

3. A message window will appear stating, **The 'USB Mass Storage Device' device can now be safely removed from the system.** Unplug the StoreJet™ 3.5 and turn off its power switch.



Figure 18. Safe to Remove Hardware



WARNING! To prevent data loss, always use this procedure to remove the StoreJet™ from Windows® Me, 2000 and XP.

Removing the StoreJet™ 3.5 in Mac™ OS 9.0, or Later

Drag and drop the Disk icon that represents your StoreJet™ 3.5 into the trashcan. Then unplug your StoreJet™ 3.5 from the USB port and turn off its power switch.

Remove the StoreJet™ 3.5 in Linux™ Kernel 2.4, or Later

Execute `umount /mnt/Storejet` to un-mount the device. Then unplug your StoreJet™ 3.5 from the USB port and turn off its power switch.

Formatting the Hard Drive

The **StoreJet™ 3.5** contains a Hard Disk Drive and can therefore be formatted. The **StoreJet™ 3.5**'s internal hard drive comes formatted for NTFS.



WARNING! Formatting the Disk will erase all of the data on your StoreJet™ 3.5.

1. Plug the **StoreJet™ 3.5** into an available USB port. Connect the Power Adapter to the **StoreJet™ 3.5** enclosure's power jack and connect the power cable to the adapter, then turn on the unit's power switch.
2. In the Windows® OS, open **My Computer** and right-click on the new **Local Disk** that represents the **StoreJet™ 3.5**.
3. Select **Format** in the drop down menu to format the **StoreJet™ 3.5**.

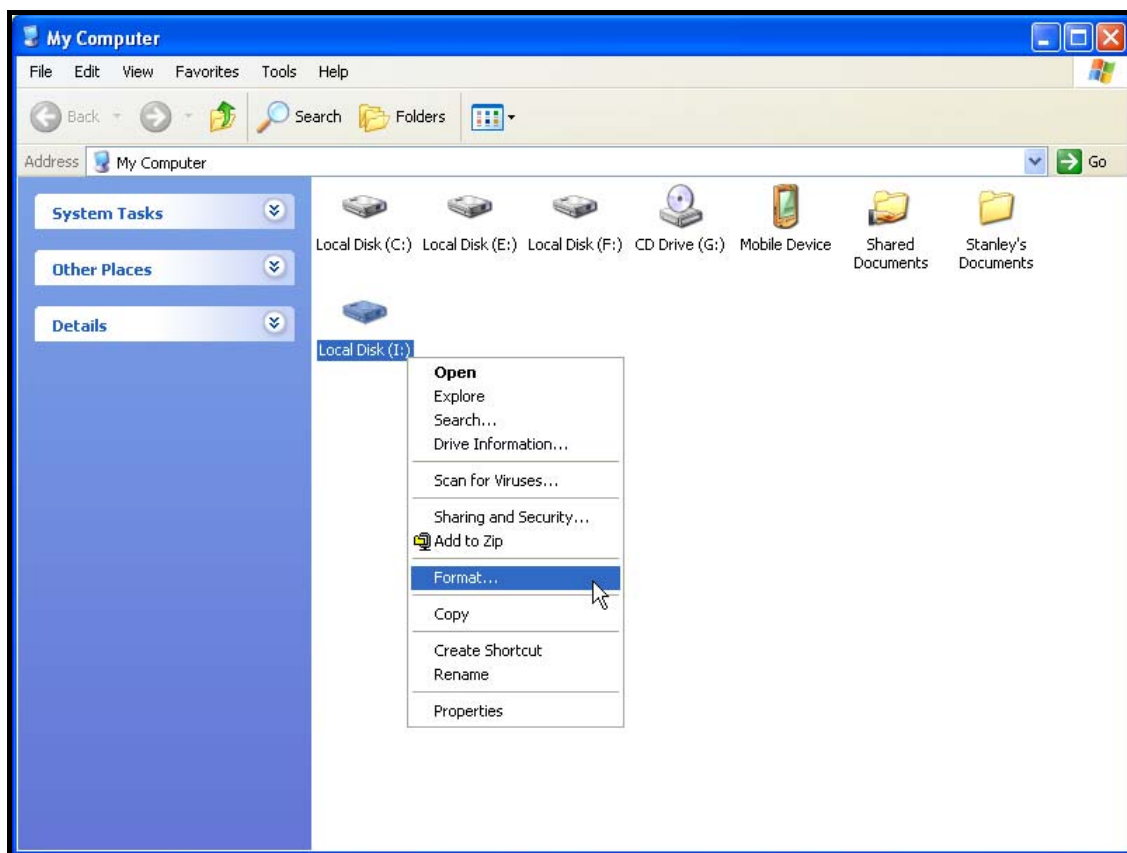


Figure 19. Formatting the drive

4. Select or specify the available options as necessary, but if you are using Windows® 98SE ensure you choose the FAT* file system, otherwise select the NTFS File system option to format the **StoreJet™ 3.5**. Click on the “**Start**” button to continue.

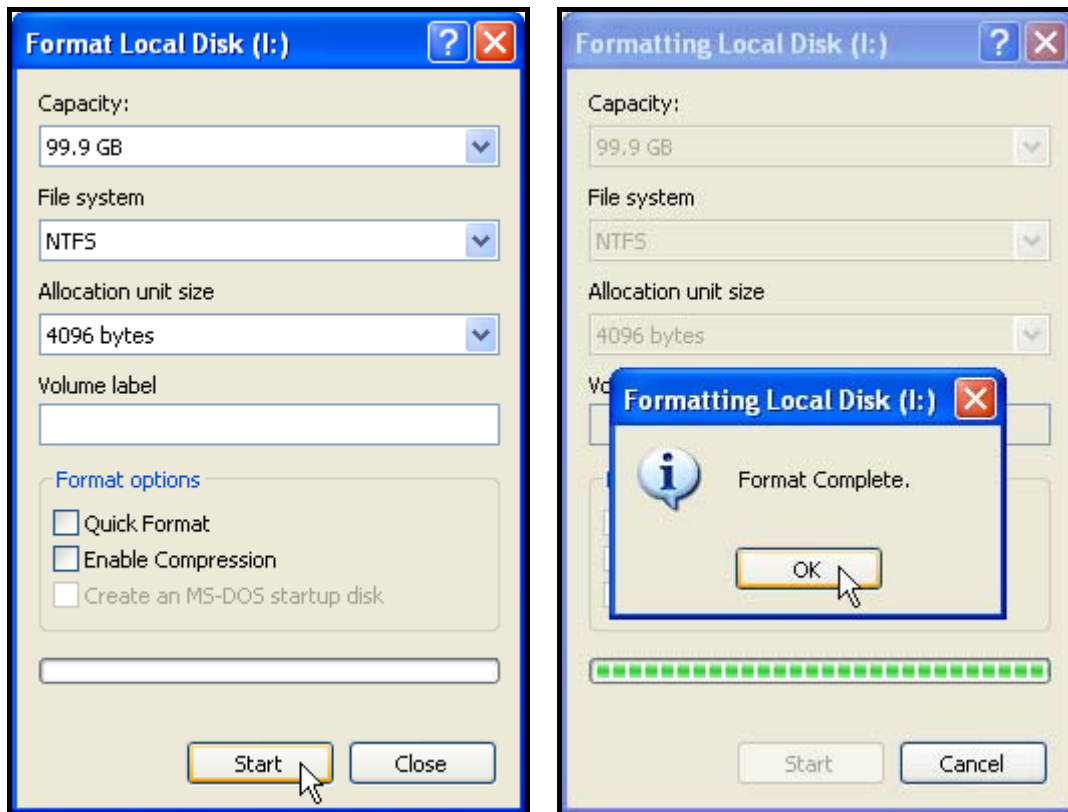


Figure 20. Format options

- ❖ If you are using Windows® 98SE you must format the **StoreJet™ 3.5**'s hard drive for the FAT file system.
5. Click on the “**OK**” button to complete it.

Troubleshooting

If a problem occurs with your **StoreJet™ 3.5**, please first check the information listed below before taking your **StoreJet™ 3.5** for repair. If you are unable to remedy a problem from the following hints, please consult your dealer, service center, or local Transcend branch office. We also have FAQ and Support services on our websites.

Software CD cannot auto-run in Windows®

Go to the **Device Manager** in the **Control Panel** and enable the **Auto-Insert** function of the CD-ROM drive. Alternatively, you can manually run the “**StoreJet.EXE**” file on the Software CD.

Operating system cannot detect the StoreJet™ 3.5

Check the following:

1. Is your **StoreJet™ 3.5** properly connected to the USB port? If not, unplug it and plug it in again. If it is properly connected, try using another available USB port.
2. Are you using the USB cable that came in the **StoreJet™ 3.5** pack? If not, try using the Transcend USB cable to connect the **StoreJet™** to the computer.
3. Is the Power Adapter connected to the **StoreJet™** power jack and the power cable connected to the power outlet, and the power switch turned on? If not, plug the Power Adapter into the **StoreJet™**, connect the power cable to the power outlet and turn on the power switch.
4. Is your **StoreJet™ 3.5** connected to the Mac™ keyboard? If yes, unplug it and plug it into an available USB port on your Mac™ Desktop.
5. Is the USB port enabled? If not, refer to the user’s manual of your computer (or motherboard) to enable it.
6. Is the necessary driver installed? If your computer is using Windows® 98SE, you must insert the Software CD into the CD-ROM and refer to the “**Driver Installation for Windows® 98SE**” section to complete the driver installation before using your **StoreJet™ 3.5**. A driver is not required for Windows® ME/2000/XP, Mac™ OS 9.0, or later and Linux™ Kernel 2.4, or later.

Cannot Power ON

The **StoreJet™ 3.5** must be powered from the mains using the power adapter and the power switch turned on. If you cannot power on the **StoreJet™** and you have ensured that all the cables are connected properly and the power switch is on, try plugging the power cable into another power outlet.

Cannot find the file that was just copied to the StoreJet™

You should always open a transferred file in its new location to ensure it has transferred successfully. Re-copy the file and refer to the “**Disconnecting from a Computer**” section to remove the **StoreJet™ 3.5** after the copy process is completed.

A File that was just deleted still appears

Re-delete the file and refer to the “**Disconnecting from a Computer**” section to remove the **StoreJet™ 3.5** after the delete process is completed.

Cannot back up my Mac™

The **StoreJet™ 3.5**'s internal hard drive comes formatted for NTFS. If you want to backup a Mac computer you will need to format the drive for HFS+ using the Mac Disk Utility.

Cannot detect the StoreJet™ 3.5 in Windows® 98SE

The StoreJet™ 3.5's internal hard drive comes formatted for NTFS. Windows® 98SE CANNOT support the NTFS file system, please reformat the hard drive to the FAT file system, see the "[Formatting the Hard Drive](#)" section.

Specifications

• Size (L x W x H):	198.5mm × 123.4mm × 35mm
• Weight:	Max. 450g (without hard drive)
• Storage Media:	3.5 inch IDE, or SATA Hard Disk Drive
• Power Supply:	AC input: 100V-240V DC output: 12V/5V Switching Power Adapter
• Max. Transfer Speeds:	480Mbps (60MB) per second
• Operating Temperature:	5°C (41°F) to 60°C (140°F)
• Storage Temperature:	-40°C (-40°F) to 70°C (158°F)
• Humidity:	8% to 90% RH
• Certificates:	CE, FCC, BSMI
• Warranty:	2-years

Ordering Information

<i>Device Description</i>	<i>Memory Size</i>	<i>Transcend P/N</i>
StoreJet™ 3.5 IDE	0GB	TS0GSJ35
StoreJet™ 3.5 SATA	0GB	TS0GSJ35-S

Transcend Limited Warranty

“Above and Beyond” is the standard we set ourselves for customer service at Transcend. We consistently position ourselves to be significantly above the industry norm, which is all part of our commitment to Customer Satisfaction.

All Transcend information, Inc. (Transcend) products are warranted and tested to be free from defects in material and workmanship and to conform to the published specifications. During the warranty period should your Transcend **StoreJet™ 3.5** fail under normal use in the recommended environment due to improper workmanship or materials, Transcend will repair the product or replace it with a comparable one. This warranty is subject to the conditions and limitations set forth herein.

Duration of Warranty: The Transcend **StoreJet™ 3.5** is covered by this warranty for a period of two (2) years from the date of purchase. Proof of purchase including the date of purchase is required to collect on the warranty. Transcend will inspect the product and decide whether to repair or replace it. Transcend reserves the right to provide a functional equivalent product, or a refurbished replacement product.

Limitations: This warranty does not apply to product failure caused by accidents, abuse, mishandling, improper installation, alteration, acts of nature, improper usage, or problems with electrical power. In addition, opening or tampering with the product casing, or any physical damage, abuse or alteration to the product’s surface, including all warranty or quality stickers, product serial or electronic numbers will also void the product warranty. Transcend is not responsible for recovering any data lost due to the failure of a hard drive device. Transcend’s **StoreJet™ 3.5** must be used with devices that conform to the recommended industry standards. Transcend will not be liable for damages resulting from a third party device that causes the Transcend **StoreJet™ 3.5** to fail. Transcend shall in no event be liable for any consequential, indirect, or incidental damages, lost profits, lost business investments, lost goodwill, or interference with business relationships as a result of lost data. Transcend is also not responsible for damage or failure of any third party equipment, even if Transcend has been advised of the possibility. This limitation does not apply to the extent that it is illegal or unenforceable under applicable law.

Disclaimer: The foregoing limited warranty is exclusive. There are no other warranties, including any implied warranty of merchantability or fitness for a particular purpose. This warranty is not affected in any part by Transcend providing technical support or advice.

Online Registration: To expedite the warranty service, please register your Transcend Product within 30 days of purchase.

Register online at <http://www.transcendusa.com/registration>

❖ The specifications mentioned above are subject to change without notice.

Transcend
Exceeding Your Expectations

Transcend Information, Inc.

www.transcendusa.com

*The Transcend logo is a registered trademark of Transcend Information, Inc.

*All logos and marks are trademarks of their respective companies.

Terminology

adapter	6, 7
Device that is used to connect one hardware device to another without a loss in function.	
CD	8, 16
Compact Disk.	
CD-ROM	8, 16
Compact Disk-Read Only Memory is a compact disk format that can store music, text and graphics.	
desktop	2, 11
This is a single user stationary computer running the Window [®] , Mac [™] , or Linux [™] Operating System.	
Driver	1, 2, 6, 8, 9, 10, 16
A software program that allows a hardware device to communicate with a computer operating system.	
e-work	2
Electronic Work is any data resulting from work performed on a computer, or similar system.	
FAQ	16
Frequently Asked Question.	
GB	18
A GigaByte measures memory storage capacity, one GB equals one billion bytes.	
HDD	4
Hard Disk Drive is a device that is used to save and retrieve data electromagnetically.	
HFS+	4, 17
Hierarchical File System is the standard file system used by Apple Mac computers.	
icon	12, 13
Is a small picture that represents a function, file, folder, disk drive, or some other element of a device.	
IDE	6, 7
Integrated Drive Electronics is an interface used to carry data from a storage device to a computers' mainboard.	
Linux	1, 3, 10, 13, 16
An open source computer Operating System.	
Mac	1, 3, 10, 13, 16
Macintosh is a personal computer made by Apple.	
NTFS	4, 12, 14, 15, 17
New Technology File System is the standard file system used by Windows computers.	
SATA	6, 7
Serial Advanced Technology Attachment is a standard for connecting hard drives to computers.	
USB	2, 3, 4, 5, 6, 9, 10, 11, 13, 14, 16
Universal Serial Bus is a hardware interface found on all modern computers for connecting peripherals.	
USB 2.0	2
Hi-Speed version of the USB interface, capable of data transfer speeds up to 480Mbits per second.	

USB A-Type	2, 4, 11
Normal sized Universal Serial Bus connector, or port.	
USB B-Type	4, 11
Reduced sized Universal Series Bus connector, or port.	
USB port	11, 16
This is the interface on a computer to which a USB device is connected.	
Windows®	2, 3, 8, 9, 11, 13, 14, 16, 17
Computer Operating System developed by Microsoft.	

Free Manuals Download Website

<http://myh66.com>

<http://usermanuals.us>

<http://www.somanuals.com>

<http://www.4manuals.cc>

<http://www.manual-lib.com>

<http://www.404manual.com>

<http://www.luxmanual.com>

<http://aubethermostatmanual.com>

Golf course search by state

<http://golfingnear.com>

Email search by domain

<http://emailbydomain.com>

Auto manuals search

<http://auto.somanuals.com>

TV manuals search

<http://tv.somanuals.com>