



MIL-SM8002TG

**9 Port 10/100/1000BASE-T
Two Combo 1000BASE-X SFP
Ports
Advanced Managed Switch**

Quick Installation Guide

Rev.A
09-MAY2006

Content

| | |
|--------------------------------------|----------|
| Introduction | 1 |
| Package Contents | 1 |
| Hardware Description | 2 |
| Physical Dimension | 2 |
| Desktop Installation | 2 |
| Power On..... | 2 |
| Initial Setup | 3 |
| Login in the Console Interface | 3 |
| IP/Subnet/Gateway Setup | 4 |

Introduction

The product is a multi-port switch that can be used to build high-performance switched indoor or protected outdoor networks. It provides wire-speed, Gigabit Ethernet switching function that allows high-performance, low-cost connection. The Switch features a store-and-forward switching and it can automatically learn and store source address in an 8K-entry MAC address table.

Package Contents

Unpack the contents of the switch and verify them against the checklist below.

- Managed Switch unit
- Power Cord
- Four Rubber Feet
- RS-232 cable
- User Manual

If any item is missing or damaged, please contact your local dealer for service.

Hardware Description

Physical Dimension

The physical dimensions of the switch is **217mm(W) x 140mm(D) x 43mm(H)**

Desktop Installation

Mount the switch on a desired space by either using wallmount brackets or rubber feet. Make sure there is enough clearance around the Switch to allow attachment of cables, power cord and air circulation.

Power On

Connect the power cord to the power socket on the rear panel of the Switch. The other side of power cord connects to the power outlet. The internal power works with AC in the voltage range 90-240VAC, frequency 50~60Hz. Check the power indicator on the front panel to see if power is properly supplied.

Initial Setup

Login in the Console Interface

Use serial cable provided in the package to pre-configure the IP settings. When the connection between Switch and PC is ready, turn on the PC and run a terminal emulation program or **Hyper Terminal** and configure its **communication parameters** to match the following default characteristics of the console port:

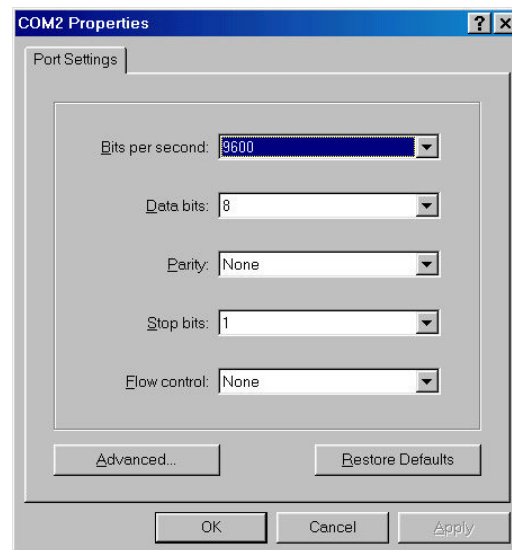
Baud Rate: 9600 bps

Data Bits: 8

Parity: none

Stop Bit: 1

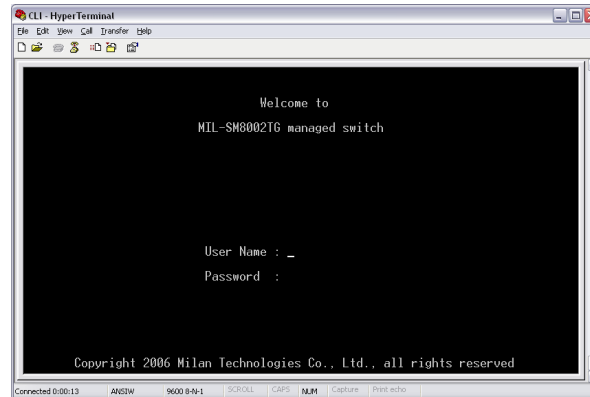
Flow control: None



The settings of communication parameters

After finished the parameter settings, click **“OK”**. When the blank screen shows up, press Enter key to bring out the login prompt. Key in the **“root”**(default value) for the both User

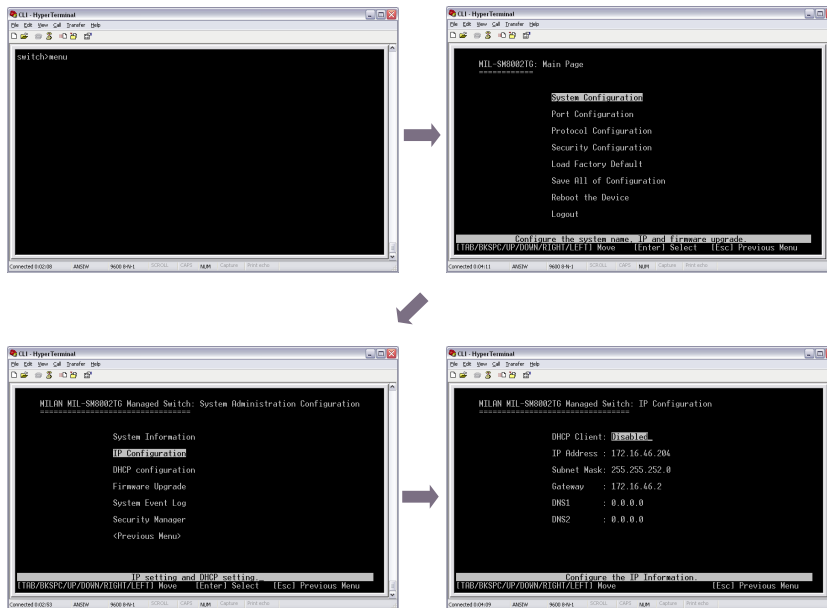
name and Password (use **Enter** key to switch), then press Enter key and the Main Menu of console management appears. Please see below figure for login screen.



Console login interface

IP/Subnet/Gateway Setup

MIL-SM8002TG is shipped with a default IP of 192.168.1.77. In order to set up a customer specific IP/Subnet/Gateway Use Main menu – Type: “menu” – Select System Configuration – IP Configuration



In the IP configuration window please choose the following:

1. **DHCP:** disable or enable the DHCP client function. When DHCP function is enabled you don't need to assign the IP address and subnet mask. The system will be

assigned the IP address from the local DHCP server.

2. **IP Address:** assign the switch IP address. The default IP is 192.168.16.1.
3. **Subnet Mask:** assign the switch IP subnet mask.
4. **Gateway:** assign the switch gateway. The default value is 192.168.16.254.
5. **DNS1:** Optionally set up Domain Name Server
6. **DNS2:** Optionally set up a backup for DNS1. When the DNS1 cannot function, the DNS2 can replace DNS1 immediately.
7. Select **<Save>** action to save the configuration.

[NOTE] Always restart the switch after finished the setup.

Continue with web-based management for additional setup.



6475 City West Pkwy

Eden Prairie, MN 55344

Tel.: +1.952.941.7600

techsupport@transition.com

Free Manuals Download Website

<http://myh66.com>

<http://usermanuals.us>

<http://www.somanuals.com>

<http://www.4manuals.cc>

<http://www.manual-lib.com>

<http://www.404manual.com>

<http://www.luxmanual.com>

<http://aubethermostatmanual.com>

Golf course search by state

<http://golfingnear.com>

Email search by domain

<http://emailbydomain.com>

Auto manuals search

<http://auto.somanuals.com>

TV manuals search

<http://tv.somanuals.com>