

**Warranty  
Registration:**

register online today for a  
chance to win a FREE Tripp Lite  
product—[www.tripplite.com/warranty](http://www.tripplite.com/warranty)

# Owner's Manual

## USB 3.0 to SATA / IDE Adapter

Model:  
U338-000



<b>Package Contents</b>	<b>2</b>
<b>Features</b>	<b>2</b>
<b>Installation</b>	<b>2</b>
<b>PC Clone EX Lite Backup Software</b>	<b>3</b>
System Requirements	3
Installation	3
Creating a Partition	4
FAT32 Format Utility	7
One Button File Backup	9
Quick Launch	9
Files Backup	10
File Manager	11
Setup	12
<b>Warranty &amp; Warranty Registration</b>	<b>13</b>



1111 W. 35th Street, Chicago, IL 60609 USA • [www.tripplite.com/support](http://www.tripplite.com/support)

Copyright © 2012 Tripp Lite. All rights reserved.

## Package Contents

- U338-000 USB 3.0 to SATA / IDE Adapter
- USB 3.0 Cable – 2.5 ft.
- 4-Pin Molex Power Cable
- External Power Supply (Input: 100-240V, 50/60Hz, 0.8A Output: 12V, 2A)
- Owner's Manual
- Backup Software CD

## Features

- Connects a SATA and/or IDE drive to the USB port on your computer
- Supports USB 3.0 SuperSpeed specification; backward compatible with USB 2.0 and 1.1
- Supports simultaneous connection of SATA and IDE drives\*, allowing data transfer between them
- Allows easy configuration of hard drives
- Features 40-Pin and 44-Pin connectors for use with 2.5", 3.5" or 5.25" IDE drives\*
- Includes software for backing up and restoring your files

\* See website for a list of compatible IDE drives.

## Installation

1. Connect the U338-000 to your computer using the included USB 3.0 cable.
2. Connect the external power supply to the U338-000 and plug it into an appropriate power source. Turn on the power to the U338-000.
3. Connect your SATA and/or IDE drive to the appropriate port on the U338-000. Use the included 4-Pin Molex cable to provide power to your IDE drive.
4. Upon connecting a drive, your computer will recognize it, making it available for access.

## PC Clone EX Lite Backup Software

The included CD contains PC Clone EX Lite software, which allows you to back up and restore your files, and quickly transfer files between connected devices. This section takes you through the installation of this software, and describes its features and how they work.

### **System Requirements**

- Supports both FAT32 and NTFS
- Compatible with Windows 2000, XP, Vista, 7, 2003 Server and 2008 Server
- Users must be logged in as an administrator
- Pentium or above
- 128 MB RAM
- VESA standard compatible display card
- External USB hard drive

### **Installation**

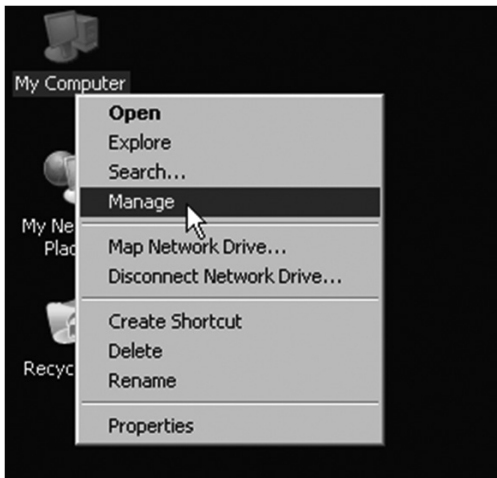
1. Insert the software CD into your computer. The software installation wizard should automatically appear. If it does not, navigate to the CD drive in your computer and click on the setup.exe file.
2. When the prompt appears, click the *Install* button to begin the installation.
3. When the license agreement screen appears, read through it and click on the *Next* button to accept the agreement and proceed with the installation.
4. After following the remaining prompts, a pop-up will appear to indicate that the installation is complete, and the *PC Clone EX Lite* icon will appear in the lower right corner of your computer screen.

# PC Clone EX Lite Backup Software

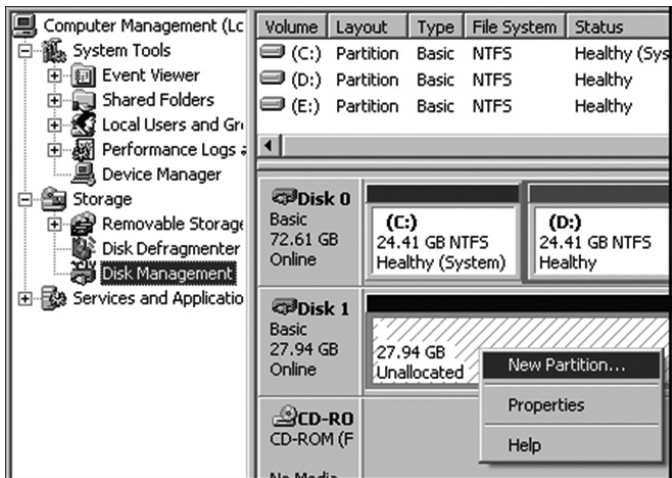
## Creating a Partition

To create a partition on your computer, follow the steps below. If a partition has already been set up, skip this section.

1. Connect your hard drive to your computer.
2. Right-click the *My Computer* icon and select the *Manage* icon. You can also open the *Start* menu and navigate to *Control Panel* → *Administrative Tools* → *Computer Management*.

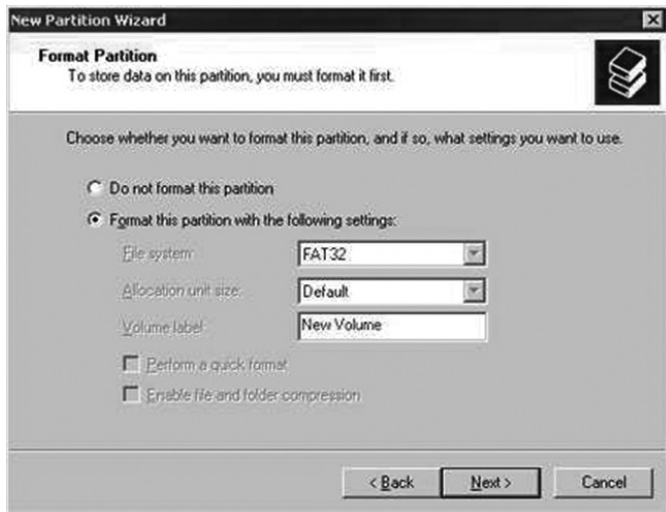


## PC Clone EX Lite Backup Software



3. Click *Disk Management* on the left side of the screen.
4. In the *Disk Management* screen, right-click in the *Unallocated* area and select *New Partition*. The *New Partition Wizard* will appear.

## PC Clone EX Lite Backup Software



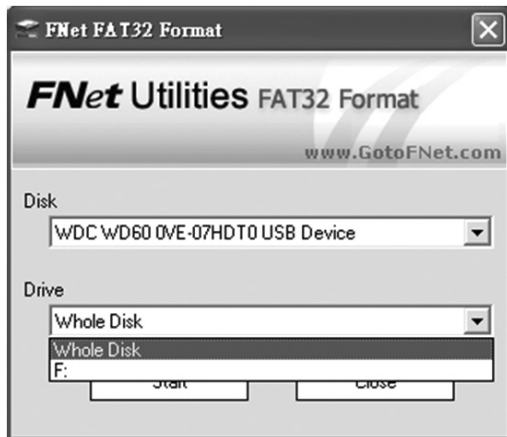
5. Follow the prompts in the *New Partition Wizard* to format the partition.

## PC Clone EX Lite Backup Software

### **FAT32 Format Utility**

The FAT32 format utility in Windows XP is not able to support hard drives exceeding 32GB. In this situation, the FAT32 Format Utility provided by the *PC Clone EX Lite* software can be used to format a hard drive up to 4 TB. If your hard drive is already formatted, skip this section.

1. Connect your hard drive to your computer.
2. Open the *Start* menu and navigate to *All Programs* → *PC Clone EX* → *FAT32 Format*. The *FAT32 Format* utility appears.



3. Confirm the USB device and Drive to format, and click the *Start* button.

## PC Clone EX Lite Backup Software



4. Click the *Quick Format* checkbox in the screen that appears, and then click the *Start* button. The utility formats the drive, and progress is shown in the progress bar. When complete, a pop-up appears to let you know formatting is finished.



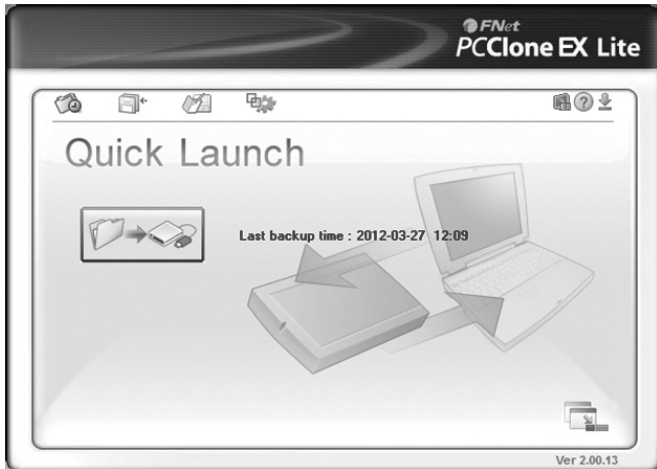
# PC Clone EX Lite Backup Software

## One Button File Backup

The *One Button Backup* function performs a backup according to the settings you enter in the *PC Clone EX Lite* utility. See the *Setup* section for details. Simply connect your hard drive via the USB port on your computer, and press the backup button on your U338-000 adapter. The backup will take place according to the settings you have entered.

## Quick Launch

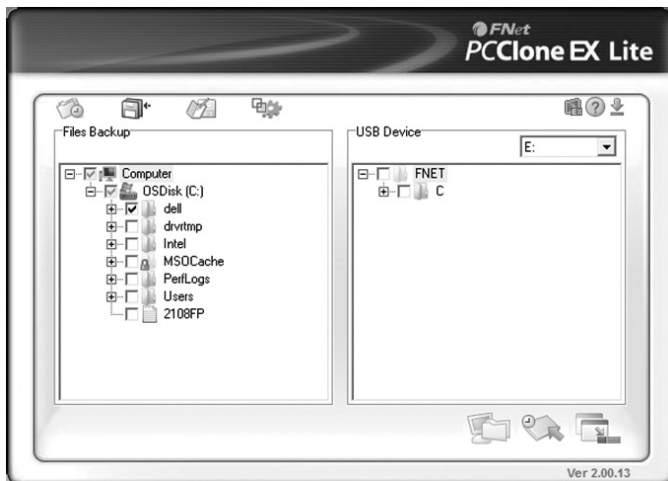
The *Quick Launch* screen is the screen that appears when the software is accessed. From here you can initiate a backup by clicking the *Backup* icon in the middle of the screen; or, you can navigate to the *Files Backup*, *File Manager* or *Setup* screens by clicking the corresponding icon at the top of the screen. When initiating a backup via the *Quick Launch* screen, it will be performed according to the settings you enter in the *PC Clone EX Lite* utility. See the *Setup* section for details. There are also icons in the upper-right corner of the *Quick Launch* screen that allow you to show the *PC Clone EX Lite* version, pull up a *Help Tutorial*, or *Minimize* the software screen. There is an additional *Minimize* icon in the lower right of the screen.



# PC Clone EX Lite Backup Software

## Files Backup

The *Files Backup* screen is where you determine which files get backed up, and to which drive they get backed up to. You can also initiate a backup, restore backed up files to the computer and delete backup files.

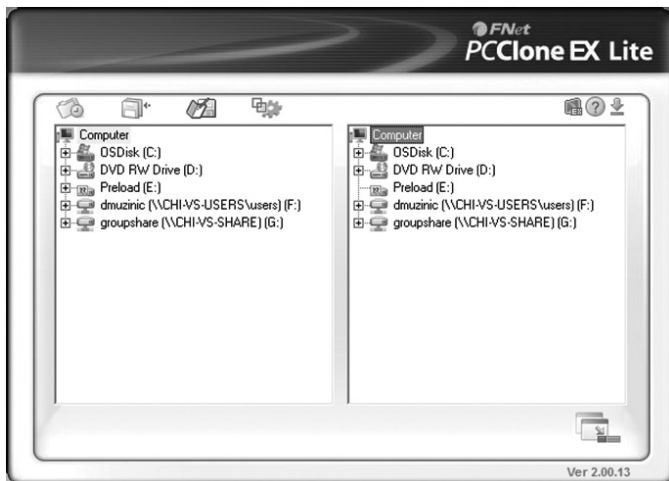


On the left side of the screen, put a check in the box next to each of the computer files that you wish to backup. On the right side of the screen, select from the drop-down list the drive that you want the computer files to be backed up to. You can perform a backup in this screen by clicking the *Files Backup* icon in the lower right corner. When initiating a backup via the *Files Backup* screen, it will be performed according to the settings you enter in the *PC Clone EX Lite* utility. See the *Setup* section for details. In addition to initiating a backup, you can restore files from the backup on your hard drive to the computer. Simply select which files you wish to restore on the right side of the screen and click the *Restore* icon in the lower right corner. To delete backup files, select them from the right side of the page and then right-click and select *Delete Selected Files*.

# PC Clone EX Lite Backup Software

## File Manager

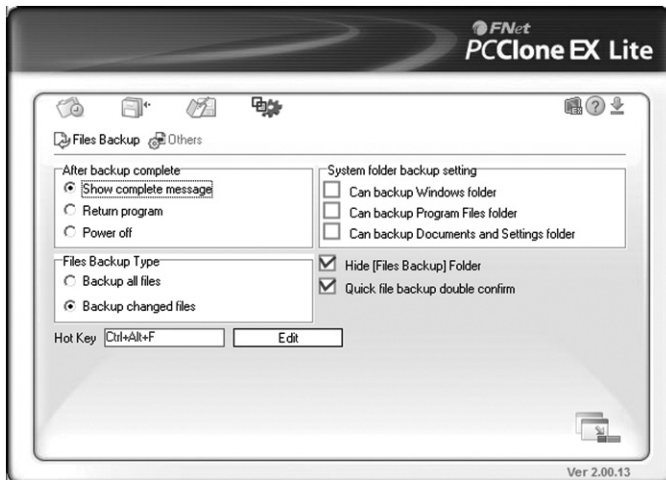
The *File Manager* provides a convenient way for you to copy-and-paste files from one area of your computer to another, or to a connected hard drive. Simply drag-and-drop a file from one side of the screen to the area you wish to copy it to on the other side of the screen.



# PC Clone EX Lite Backup Software

## Setup

The *Setup* screen is where you determine the backup settings used by *PC Clone EX Lite*, as well as whether the *One Touch Backup* button is activated, and if the software automatically launches upon Windows startup. Edit these settings according to your preferences.



# Warranty & Warranty Registration

## 1-Year Limited Warranty

TRIPP LITE warrants its products to be free from defects in materials and workmanship for a period of one (1) year from the date of initial purchase. TRIPP LITE's obligation under this warranty is limited to repairing or replacing (at its sole option) any such defective products. To obtain service under this warranty, you must obtain a Returned Material Authorization (RMA) number from TRIPP LITE or an authorized TRIPP LITE service center. Products must be returned to TRIPP LITE or an authorized TRIPP LITE service center with transportation charges prepaid and must be accompanied by a brief description of the problem encountered and proof of date and place of purchase. This warranty does not apply to equipment, which has been damaged by accident, negligence or misapplication or has been altered or modified in any way.

EXCEPT AS PROVIDED HEREIN, TRIPP LITE MAKES NO WARRANTIES, EXPRESS OR IMPLIED, INCLUDING WARRANTIES OF MERCHANTABILITY AND FITNESS FOR A PARTICULAR PURPOSE.

Some states do not permit limitation or exclusion of implied warranties; therefore, the aforesaid limitation(s) or exclusion(s) may not apply to the purchaser.

EXCEPT AS PROVIDED ABOVE, IN NO EVENT WILL TRIPP LITE BE LIABLE FOR DIRECT, INDIRECT, SPECIAL, INCIDENTAL OR CONSEQUENTIAL DAMAGES ARISING OUT OF THE USE OF THIS PRODUCT, EVEN IF ADVISED OF THE POSSIBILITY OF SUCH DAMAGE. Specifically, TRIPP LITE is not liable for any costs, such as lost profits or revenue, loss of equipment, loss of use of equipment, loss of software, loss of data, costs of substitutes, claims by third parties, or otherwise.

Use of this equipment in life support applications where failure of this equipment can reasonably be expected to cause the failure of the life support equipment or to significantly affect its safety or effectiveness is not recommended. Do not use this equipment in the presence of a flammable anesthetic mixture with air, oxygen or nitrous oxide.

## Warranty & Warranty Registration

### **FCC Notice, Class B**

This device complies with part 15 of the FCC Rules. Operation is subject to the following two conditions: (1) This device may not cause harmful interference, and (2) this device must accept any interference received, including interference that may cause undesired operation.

**Note:** *This equipment has been tested and found to comply with the limits for a Class B digital device, pursuant to part 15 of the FCC Rules. These limits are designed to provide reasonable protection against harmful interference in a residential installation. This equipment generates, uses and can radiate radio frequency energy and, if not installed and used in accordance with the instructions, may cause harmful interference to radio communications. However, there is no guarantee that interference will not occur in a particular installation. If this equipment does cause harmful interference to radio or television reception, which can be determined by turning the equipment off and on, the user is encouraged to try to correct the interference by one or more of the following measures:*

- Reorient or relocate the receiving antenna.
- Increase the separation between the equipment and receiver.
- Connect the equipment into an outlet on a circuit different from that to which the receiver is connected.
- Consult the dealer or an experienced radio/TV technician for help.

Any changes or modifications to this equipment not expressly approved by Tripp Lite could void the user's authority to operate this equipment.

## Warranty & Warranty Registration

### WEEE Compliance Information for Tripp Lite Customers and Recyclers (European Union)

Under the Waste Electrical and Electronic Equipment (WEEE) Directive and implementing regulations, when customers buy new electrical and electronic equipment from Tripp Lite they are entitled to:



- Send old equipment for recycling on a one-for-one, like-for-like basis (this varies depending on the country)
- Send the new equipment back for recycling when this ultimately becomes waste

### WARRANTY REGISTRATION

Visit [www.tripplite.com/warranty](http://www.tripplite.com/warranty) today to register the warranty for your new Tripp Lite product. You'll be automatically entered into a drawing for a chance to win a FREE Tripp Lite product!\*

\* No purchase necessary. Void where prohibited. Some restrictions apply. See website for details.

Tripp Lite follows a policy of continuous improvement. Product specifications are subject to change without notice.



**1111 W. 35th Street, Chicago, IL 60609 USA**  
**[www.tripplite.com/support](http://www.tripplite.com/support)**

201206241 • 933232-EN



## Free Manuals Download Website

<http://myh66.com>

<http://usermanuals.us>

<http://www.somanuals.com>

<http://www.4manuals.cc>

<http://www.manual-lib.com>

<http://www.404manual.com>

<http://www.luxmanual.com>

<http://aubethermostatmanual.com>

Golf course search by state

<http://golfingnear.com>

Email search by domain

<http://emailbydomain.com>

Auto manuals search

<http://auto.somanuals.com>

TV manuals search

<http://tv.somanuals.com>