



1111 W. 35th Street
Chicago, IL 60609 USA
Customer Support: (773) 869-1234
www.tripplite.com

Owner's Manual
**LINE
CONDITIONERS**

(120V-60 Hz)
ESPAÑOL: p. 6
FRANÇAIS: p. 11

Safety: *p. 2*

Quick Installation: *p. 3*

Basic Operation: *p. 4*

Service: *p. 5*

Specifications: *p. 5*



This manual contains important instructions and warnings that should be followed during the installation, operation and storage of all Tripp Lite Line Conditioners.

Line Conditioner Location Warnings

- Install your Line Conditioner indoors, away from excess moisture or heat, dust or direct sunlight.
- For best performance, keep the indoor temperature between 32° F and 104° F (between 0° C and 40° C).
- Leave adequate space around all sides of the Line Conditioner for proper ventilation.

Line Conditioner Connection Warnings

- Connect your Line Conditioner to a three-wire, grounded AC power outlet. Do not remove or modify the ground pin of the Line Conditioner's plug.
- If you are connecting your Line Conditioner to a motor-powered AC generator, the generator must provide clean, filtered computer-grade output.

Equipment Connection Warning

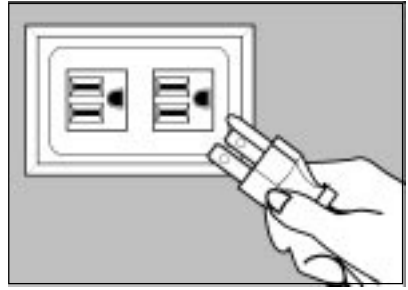
- Do not use Tripp Lite Line Conditioners for life support applications in which a malfunction or failure of a Tripp Lite Line Conditioner could cause failure or significantly alter the performance of a life-support device.

Line Conditioner Maintenance Warning

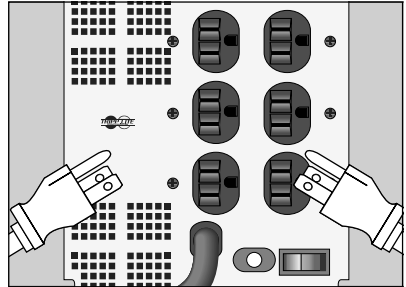
- Tripp Lite Line Conditioners require no maintenance. Keep the Line Conditioner dry at all times. DO NOT open the unit for any reason.

Quick Installation—120V-60 Hz

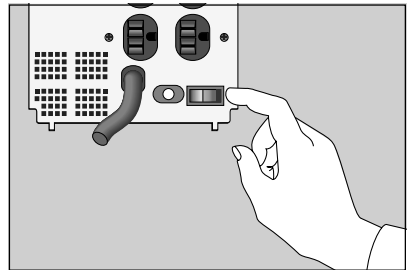
- 1 **Connect your Line Conditioner to an electrical outlet.**



- 2 **Plug your computer and electronics into your Line Conditioner's outlets.**



- 3 **Turn your Line Conditioner's power switch ON.**



Basic Operation

Indicator Lights

All Indicator Light descriptions apply when the Line Conditioner is plugged into a wall outlet and turned on. (Available on select models only.)

A green "NORM" light will turn ON whenever your Line Conditioner is plugged in and receiving nominal AC line voltage.

Yellow lights labelled "LOW" (or "BOOST") and "HIGH" (or "TRIM") will turn ON when incoming voltage is above or below nominal AC line voltage.

Red lights labelled "VERY HIGH" or "VERY LOW" will turn ON when incoming voltage is substantially above or below nominal AC line voltage.

A green "LINE OK" light will turn ON when AC power is present and no wiring faults are detected. When this light is illuminated, AC power is acceptable for connected equipment.

A red "LINE FAULT" light will turn ON to indicate a wiring fault has been detected. The condition should be investigated and repaired by a qualified technician as soon as possible. A loose wall outlet may cause this light to come ON. Your Line Conditioner will identify most common wiring faults (but not necessarily every possible type of fault).

Other Line Conditioner Features

AC Receptacles



The receptacles provide your connected equipment with AC line power during normal operation. They adjust incoming voltage to provide equipment with consistent 120V power. The receptacles also protect your equipment against damaging surges and line noise, eliminating the need for external surge suppression.

Note: As the Line Conditioner corrects fluctuating input voltages, the unit will make a gentle clicking sound. The frequency of the clicking will depend on the quality of the utility power in your particular area. The clicking is normal and indicates the Line Conditioner is compensating for fluctuating input voltages as described in this manual.

Circuit Breaker (Available on select models)



If the rated capacity of the Line Conditioner is exceeded at any time, the circuit breaker will open (trip). Remove the overload and let the circuit breaker cool for one minute. Reset the circuit breaker by pushing in the plunger.

Service

Service

If returning your Line Conditioner to Tripp Lite or an authorized Tripp Lite service center, please carefully pack the it using the ORIGINAL PACKING MATERIAL that came with the unit. Enclose a letter describing the symptoms of the problem. If the Line Conditioner is within the 2 year warranty period, enclose a copy of your sales receipt.

Specifications

Model	Output Wattage (Continuous)	Voltage/Frequency† (Hz.)	Cord Length (Ft.)	Number/Type of Outlets	Surge Energy Rating (Joules)	High Frequency Noise Suppression (@ 1MHz.)	Dimensions H x W x D (In.)	Shipping Weight (Lb.)
LS 600	600	120/60	6	2 NEMA 5-15R	240	20 dB	5¼ x 4¼ x 5¼	5
LS 604	600	120/60	6	4 NEMA 5-15R	720	20 dB	5¼ x 4¼ x 5¼	5
LC 1200	1200	120/60	6	4 NEMA 5-15R	1200	80 dB	6¼ x 5¼ x 6¼	9
LC 1800	1800	120/60	6	6 NEMA 5-15R	1440	80 dB	6¼ x 5¼ x 6¼	11
LC 2400	2400	120/60	6	4 NEMA 5-15R, 2 NEMA 5-20R	1400	80 dB	6¼ x 5¼ x 6¼	13
RACKMOUNT MODEL								
LCR 2400	2400	120/60	12	14 NEMA 5-15R	1200	80 dB	5½ x 19 x 5	27
WALLMOUNT MODELS								
LS 604 WM	600	120/60	6	4 NEMA 5-15R	720	20 dB	4 x 5 x 5¼	12
LC 1200 WM	1200	120/60	6	4 NEMA 5-15R	1200	80 dB	5 x 5 x 7¼	16

†Voltage Range: 87 – 140VAC input/120VAC nominal output

2-Year Limited Warranty

TRIPP LITE warrants its products to be free from defects in materials and workmanship for a period of two years from the date of initial purchase. TRIPP LITE's obligation under this warranty is limited to repairing or replacing (at its sole option) any such defective products. To obtain service under this warranty, you must obtain a Returned Material Authorization (RMA) number from TRIPP LITE or an authorized TRIPP LITE service center. Products must be returned to TRIPP LITE or an authorized TRIPP LITE service center with transportation charges prepaid and must be accompanied by a brief description of the problem encountered and proof of date and place of purchase. This warranty does not apply to equipment which has been damaged by accident, negligence or misapplication or has been altered or modified in any way. This warranty applies only to the original purchaser who must have properly registered the product within 10 days of purchase.

EXCEPT AS PROVIDED HEREIN, TRIPP LITE MAKES NO WARRANTIES, EXPRESS OR IMPLIED, INCLUDING WARRANTIES OF MERCHANTABILITY AND FITNESS FOR A PARTICULAR PURPOSE. Some states do not permit limitation or exclusion of implied warranties; therefore, the aforesaid limitation(s) or exclusion(s) may not apply to the purchaser.

EXCEPT AS PROVIDED ABOVE, IN NO EVENT WILL TRIPP LITE BE LIABLE FOR DIRECT, INDIRECT, SPECIAL, INCIDENTAL OR CONSEQUENTIAL DAMAGES ARISING OUT OF THE USE OF THIS PRODUCT, EVEN IF ADVISED OF THE POSSIBILITY OF SUCH DAMAGE. Specifically, TRIPP LITE is not liable for any costs, such as lost profits or revenue, loss of equipment, loss of use of equipment, loss of software, loss of data, costs of substitutes, claims by third parties, or otherwise.

The policy of TRIPP LITE is one of continuous improvement. Specifications are subject to change without notice.



1111 W. 35th Street, Chicago, IL 60609 USA
773.869.1234 (USA) • 773.869.1212 (International)
www.triplite.com

Free Manuals Download Website

<http://myh66.com>

<http://usermanuals.us>

<http://www.somanuals.com>

<http://www.4manuals.cc>

<http://www.manual-lib.com>

<http://www.404manual.com>

<http://www.luxmanual.com>

<http://aubethermostatmanual.com>

Golf course search by state

<http://golfingnear.com>

Email search by domain

<http://emailbydomain.com>

Auto manuals search

<http://auto.somanuals.com>

TV manuals search

<http://tv.somanuals.com>