

**Warranty Registration:**  
register online today for  
a chance to win a FREE Tripp Lite  
product—[www.tripplite.com/warranty](http://www.tripplite.com/warranty)



# Owner's Manual

## ECO-Surge™ Suppressor

Model: AV10IRG

<b>Important Safety Instructions</b>	<b>2</b>
<b>Features</b>	<b>2</b>
<b>Installation</b>	<b>3</b>
<b>Operation</b>	<b>4</b>
<b>Warranty &amp; Warranty Registration</b>	<b>5</b>
<b>Ultimate Lifetime Insurance Policy</b>	<b>6</b>

### Tripp Lite's Commitment to the Environment



#### Green Initiatives

Tripp Lite believes in environmental responsibility. That's why our new Eco-Surge Surge Suppressors protect more than just your vital electronics—they're the ideal GREEN protection solution for your sensitive equipment, your bottom line AND the environment.



#### RoHS Compliance

Tripp Lite was an early supporter of the Restriction of Hazardous Substances (RoHS) directive, which strictly limits the use of six hazardous substances in electrical and electronics equipment: lead, mercury, cadmium, hexavalent chromium, polybrominated biphenyls (PBBs), and polybrominated diphenyl ether (PBDE).



1111 W. 35th Street, Chicago, IL 60609 USA  
[www.tripplite.com/support](http://www.tripplite.com/support)

Copyright © 2010 Tripp Lite. ECO-Surge is a registered trademark of Tripp Lite. All rights reserved.

## Important Safety Instructions

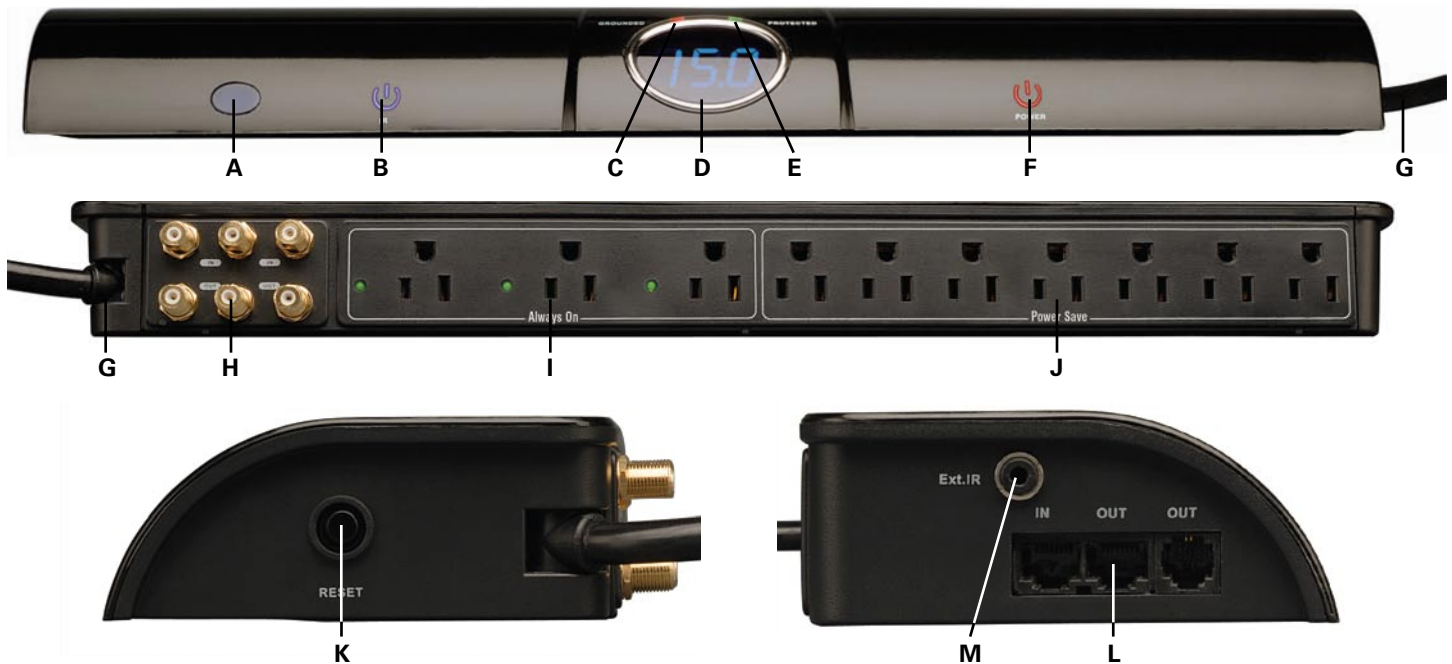
### SAVE THESE INSTRUCTIONS



#### CAUTION!

**DO NOT** connect to an ungrounded outlet. **DO NOT** use with 2-wire extension cords or adapters. This surge suppressor is designed for indoor use only. Install the surge suppressor away from heat-emitting appliances such as radiators or heat registers. Do not install where excessive moisture is present. Do not plug extension cords into the unit. Never install electrical, telephone, network or coaxial wiring during a lightning storm. Do not drill into any part of the housing or open the housing for any reason. There are no user-serviceable parts inside.

### Features



#### A IR RECEIVER

Receives the signal from your remote to power on the GREEN "Power Save" outlets.

#### B IR LED (Blue)

Indicates that a remote signal is being received.

#### C GROUNDED LED (Red)

Assures wall outlet is grounded and surge protection can function.

#### D LED PANEL

Shows real-time amperage readings for the 7 "Power Save" outlets helping avoid power overloads.

#### E PROTECTED LED (Green)

Assures surge protection is present. If this LED ever goes out, Tripp Lite will replace your surge suppressor under warranty at no charge!

#### F AC POWER LED (Red)

Indicates the ON/OFF status of the ECO-Surge Suppressor.

#### G CONVENIENT 8 FOOT SWIVELING POWER CORD

Swivels on an angle to reach around corners or other obstacles to access distant outlets.

#### H HD 2.2 Ghz COAX JACKS (3 LINE)

Three sets of gold coaxial "F" connectors protect components on satellite, cable or antenna lines.

#### I "ALWAYS ON" OUTLETS (3 with GREEN LEDs)

Provide continuous power to devices like DVRs (TiVo®), cable and satellite boxes. LEDs illuminate to indicate power is present.

#### J "POWER SAVE" OUTLETS (7)

Have AC power cut to idle components, reducing energy waste (phantom loads) when turned off by GREEN "Power Save" technology—perfect for intermittent-use components like DVD players, gaming consoles, amplifiers and speaker systems.

#### K RESETTABLE CIRCUIT BREAKER

Protects the unit and your equipment against dangerous system overload.

#### L TEL/MODEM/NETWORK JACKS (1 Line)

Provide protection for Digital Video Recorders (TiVo) and other components on a single pay-per-view, dial-up or Ethernet line.

#### M IR EXTENSION JACK

Works with an optional cord and small receiver to extend your IR transmission distance. (Not included—go to [www.tripplite.com](http://www.tripplite.com) for ordering details.)

## Installation

**Connect Your Surge Suppressor to the AC Power Line:** Plug the surge suppressor's power cord into a standard, 3-wire grounded 120V AC outlet. Once plugged in, the unit will be powered. There is no power control button or function for this surge suppressor.

**Check Your Surge Suppressor's Diagnostic Indicator Lights:** Check your diagnostic LEDs prior to connecting your equipment. They will indicate various operating conditions when the surge suppressor is plugged into a live 120V AC outlet.

**AC POWER LED (Red):** Indicates the power status (ON/OFF) of the unit.

**"PROTECTED" LED (Green):** Indicates the surge suppression components are intact and providing complete protection against surges. If this LED does not illuminate, some of the surge suppression components are not functioning, and the unit should be replaced. Visit [www.tripplite.com/support](http://www.tripplite.com/support) for more information.

**"GROUNDED" LED (Red):** Indicates wall outlet is grounded and surge protection can properly function. If this light DOES NOT illuminate and power is present, consult a qualified electrician to examine your outlet's wiring.

**"STATUS LEDs" (Green):** Indicates that AC power is present in that "Always On" outlet.

**IR LED (Blue):** Indicates that the unit is receiving a signal from your remote.

**Connect Your Equipment to the Surge Suppressor's Appropriate AC Outlets:** Plug your equipment's power cords into the surge suppressor's AC outlets. DO NOT plug in extension cords. DO NOT OVERLOAD the surge suppressor's outlets. The surge suppressor can accommodate a total equipment load of up to 15 amps (whether plugged into a single outlet or spread out over multiple outlets). If the load on the surge suppressor exceeds 15 amps, the circuit breaker will trip and the outlets will stop providing power. If the circuit breaker trips, reduce the load by unplugging some devices. Depress the circuit breaker to reset.

### IMPORTANT CONNECTION NOTES

It is important to note that your surge suppressor has "Power Save" and "Always On" outlets. "Power Save" outlets will have AC power cut to them approximately 3 minutes after the GREEN "Power Save" technology detects that total power consumption in the "Power Save" outlets has dropped 70%. "Power Save" outlets are recommended for intermittent-use devices such as TVs, receivers, monitors, printers, scanners, lamps, DVD players, gaming consoles, amplifiers and speaker systems.

"Always On" outlets provide continuous power even after the "Power Save" outlets are turned OFF. These outlets are recommended for critical devices such as modems, routers, external drives, cordless phones, fax machines, DVRs (TiVo®), cable and satellite boxes.

**Connect Your Equipment to the Surge Suppressor's Phone Jacks (Optional Installation):** Connect a phone cable from the wall jack directly to the surge suppressor's RJ-style phone jack labeled "IN." Connect a phone cable from the surge suppressor's RJ-style phone jack labeled "OUT" directly to the device to be protected. All models with phone line surge protection protect devices on a single line only. The surge suppressor must always be the first item connected in line from the wall jack. The surge suppressor must be plugged into a 3-wire, grounded AC outlet for phone line surge protection to work.

**Connect Your Equipment to the Surge Suppressor's Network Jacks\* (Optional Installation):** Connect a data cord from the wall jack or cable/DSL modem directly to the surge suppressor's network jack labeled "IN." Connect a data cord from the surge suppressor's network jack labeled "OUT" directly to the device to be protected (typically a computer's network interface card). The surge suppressor must always be the first item connected in line from the Ethernet source (typically a wall jack). The surge suppressor must be plugged into a 3-wire grounded AC outlet for network line surge protection to work.

\* 10/100 BaseT/TX, Token Ring. Not compatible with PoE (Power Over Ethernet) applications.

**Connect Your Equipment to the Surge Suppressor's Coaxial Jacks (Optional Installation):** Connect a coaxial cable from the wall jack directly to the surge suppressor's "F" style coaxial jack labeled "IN." Connect a coaxial cable from the surge suppressor's "F" style coaxial jack labeled "OUT" directly to the device to be protected. Select models include a second set of coaxial jacks for simultaneous connection and protection of devices on two separate lines (cable, antenna or satellite). The surge suppressor must always be the first item connected in line from the coaxial wall jack. The surge suppressor must be plugged into a 3-wire grounded AC outlet for coaxial line surge protection to work.

## Operation

1. Plug the AV10IRG into an appropriate AC power source. By plugging in the unit, you have powered it ON (there is no ON/OFF function button to press). Power will now be supplied to the 3 "Always On" outlets and any components plugged into them can be turned ON. Each "Always On" outlet's corresponding LED will illuminate.
2. Use any IR remote to turn ON the GREEN "Power Save" outlets. Like a gate being opened, AC power is now present in the 7 "Power Save" outlets.



**IMPORTANT IR REMOTE NOTE: Any standard IR remote will work with the AV10IRG. There is absolutely no need for additional programming of this remote as long as it is a standard IR remote.**

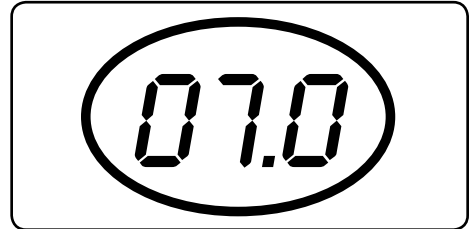
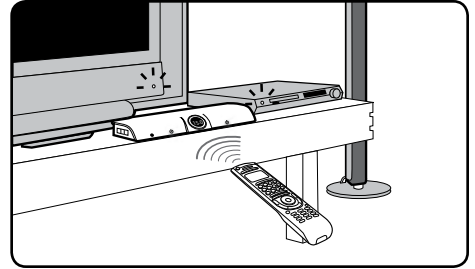
3. Once the GREEN "Power Save" outlets have been powered ON, any components plugged into these outlets can be switched ON, using your master remote, their individual remote controls or manually.
4. After plugging the unit in and plugging in devices to the "Power Save" outlets, you will notice that the blue LED panel will display amperage readings from the 7 "Power Save" outlets that are based on the load you have connected. **DO NOT OVERLOAD** the surge suppressor with more than 15 amps! If any of the LEDs or LED panel do not operate, visit [www.tripplite.com/support](http://www.tripplite.com/support).

Note: If the surge suppressor is overloaded with more than 15 amps, the circuit breaker will trip. Reduce the load connected to the surge suppressor and press in the circuit breaker button located on the side panel to reset the system.

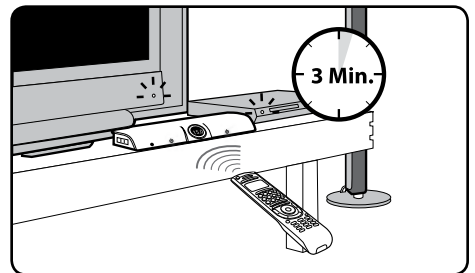
5. To activate the GREEN "Power Save" function, simply turn OFF components plugged into the "Power Save" outlets. The surge suppressor's technology will close the gate that provides AC power to these outlets approximately 3 minutes after it detects a 70% drop in power consumption. Once this gate has closed, power is no longer present in the "Power Save" outlets and phantom loads (wasted electricity) have been eliminated.



**IMPORTANT POWER NOTE: You can turn peripherals plugged into "Power Save" outlets OFF at any time, however AC power will continue to flow to these outlets until three minutes after the GREEN technology detects a 70% drop in total power consumption. Power is continuously provided to "Always On" outlets until the AV10IRG is unplugged.**



DO NOT EXCEED 15 AMPS.



## Warranty & Warranty Registration

### Lifetime Limited Warranty

Seller warrants this product, if used in accordance with all applicable instructions, to be free from original defects in material and workmanship for its lifetime. If the product should prove defective in material or workmanship within that period, Seller will repair or replace the product, in its sole discretion. Service under this Warranty can only be obtained by your delivering or shipping the product (with all shipping or delivery charges prepaid) to: Tripp Lite, 1111 W. 35th St., Chicago, IL 60609. Seller will pay return shipping charges.

The warranties of all TRIPP LITE surge suppressors are null and void if they have been connected to the output of any UPS system. The warranties of all TRIPP LITE UPS Systems are null and void if a surge suppressor has been connected to its output receptacles.

THIS WARRANTY DOES NOT APPLY TO NORMAL WEAR OR TO DAMAGE RESULTING FROM ACCIDENT, MISUSE, ABUSE OR NEGLIGENCE. SELLER MAKES NO EXPRESS WARRANTIES OTHER THAN THE WARRANTY EXPRESSLY SET FORTH HEREIN. EXCEPT TO THE EXTENT PROHIBITED BY APPLICABLE LAW, ALL IMPLIED WARRANTIES, INCLUDING ALL WARRANTIES OF MERCHANTABILITY OR FITNESS, ARE LIMITED IN DURATION TO THE WARRANTY PERIOD SET FORTH ABOVE; AND THIS WARRANTY EXPRESSLY EXCLUDES ALL INCIDENTAL AND CONSEQUENTIAL DAMAGES. (Some states do not allow limitations on how long an implied warranty lasts, and some states do not allow the exclusion or limitation of incidental or consequential damages, so the above limitations or exclusions may not apply to you. This Warranty gives you specific legal rights, and you may have other rights which vary from jurisdiction to jurisdiction.)

**WARNING:** The individual user should take care to determine prior to use whether this device is suitable, adequate or safe for the use intended. Since individual applications are subject to great variation, the manufacturer makes no representation or warranty as to the suitability or fitness of these devices for any specific application.

### WARRANTY REGISTRATION

Visit [www.tripplite.com/warranty](http://www.tripplite.com/warranty) today to register the warranty for your new Tripp Lite product. You'll be automatically entered into a drawing for a chance to win a FREE Tripp Lite product!\*

\* No purchase necessary. Void where prohibited. Some restrictions apply. See website for details.

### Regulatory Compliance Identification Numbers

For the purpose of regulatory compliance certifications and identification, your Tripp Lite product has been assigned a unique series number. The series number can be found on the product nameplate label, along with all required approval markings and information. When requesting compliance information for this product, always refer to the series number. The series number should not be confused with the marking name or model number of the product.

### Warning!

Use of this equipment in life support applications where failure of this equipment can reasonably be expected to cause the failure of the life support equipment or to significantly affect its safety or effectiveness is not recommended. Do not use this equipment in the presence of a flammable anesthetic mixture with air, oxygen or nitrous oxide.

### FCC Part 68 Notice (United States Only)

If your Modem/Fax Protection causes harm to the telephone network, the telephone company may temporarily discontinue your service. If possible, they will notify you in advance. If advance notice isn't practical, you will be notified as soon as possible. You will be advised of your right to file a complaint with the FCC. Your telephone company may make changes in its facilities, equipment, operations or procedures that could affect the proper operation of your equipment. If it does, you will be given advance notice to give you an opportunity to maintain uninterrupted service. If you experience trouble with this equipment's Modem/Fax Protection, please visit [www.tripplite.com/support](http://www.tripplite.com/support) for repair/warranty information. The telephone company may ask you to disconnect this equipment from the network until the problem has been corrected or you are sure the equipment is not malfunctioning. There are no repairs that can be made by the customer to the Modem/Fax Protection. This equipment may not be used on coin service provided by the telephone company. Connection to party lines is subject to state tariffs. (Contact your state public utility commission or corporation commission for information.)

## Ultimate Lifetime Insurance Policy (This is a limited warranty valid in the U.S. and Canada only.)

Tripp Lite warrants, for the lifetime of the product, (at Tripp Lite's option) to repair or replace (on a pro rata basis) directly connected equipment that is damaged due to power transients while properly connected to Tripp Lite products offering the Ultimate Lifetime Insurance Policy. Power transients include spikes and surges on the AC power, data or telephone lines that the Tripp Lite products have been designed to protect against (as recognized by industry standards). The following four paragraphs are conditions that must be complied with before the warranty becomes valid; failure to comply with these requirements will void the warranty.

**AC Power Line Transients:** To claim damages, the Tripp Lite product must be plugged into a properly wired and grounded outlet. No extension cords or other electrical connections may be used. The installation must comply with all applicable electrical and safety codes set forth by the National Electrical Code (NEC). Except as provided above, this warranty does not cover any damage to properly connected electronic equipment resulting from a cause other than an "AC power transient". If user meets all of the above requirements, Tripp Lite will repair or replace (at Tripp Lite's option) equipment up to the specified value (See Ultimate Lifetime Insurance Policy Limits). No coverage is allowed for damage entering from telephone or data lines, unless they are separately protected, as described below.

**Telephone and Data Line Transients:** Tripp Lite will repair or replace directly connected equipment that is damaged by transients on telephone and/or data lines only when all such paths are protected by a Tripp Lite protection product(s) and the AC power (utility) line is simultaneously protected by a Tripp Lite power protection device (UPS, surge suppressor or line conditioner) with Ultimate Lifetime Insurance coverage. Additional telephone and/or data line connected devices downstream must have their own telephone and/or dataline protectors.

Reimbursement dollar limits will be equal to that of the Tripp Lite power protection protector. Coverage is excluded where a suitable environment for the protection device is not provided, including, but not limited to, lack of a proper safety ground. Telephone service equipment must also include a properly installed and operating "primary protection" device at the telephone service entrance (such devices are normally added during telephone line installation).

All above warranties are null and void if the Tripp Lite product has been improperly installed, tampered with or altered in any way, or if the connected equipment was not used under normal operating conditions or in accordance with any labels or instructions. All claims under this warranty must be submitted in writing to Tripp Lite within 30 days of the occurrence or the claim will not be considered. This warranty does not include damage resulting from accident or misuse, and applies to the domestic (USA & Canada) use of these products only. Tripp Lite reserves the right to determine whether the damage to the connected equipment is due to malfunction of the Tripp Lite product by requesting the equipment in question be sent to Tripp Lite for examination. This policy is above and beyond, only to the extent needed, of that provided by any coverage of connected equipment provided by other sources, including, but not limited to, any manufacturer's warranty and/or any extended warranties.

EXCEPT AS PROVIDED ABOVE, TRIPP LITE MAKES NO WARRANTIES, EXPRESS OR IMPLIED, INCLUDING WARRANTIES OF MERCHANTABILITY AND FITNESS FOR A PARTICULAR PURPOSE. Some states do not permit limitation or exclusion of implied warranties; therefore, the aforesaid limitation(s) or exclusion(s) may not apply to purchaser. EXCEPT AS PROVIDED ABOVE, IN NO EVENT WILL TRIPP LITE BE LIABLE FOR DIRECT, INDIRECT, SPECIAL, INCIDENTAL OR CONSEQUENTIAL DAMAGES ARISING OUT OF THE USE OF THIS PRODUCT, EVEN IF ADVISED OF THE POSSIBILITY OF SUCH DAMAGE. Specifically, Tripp Lite is not liable for any costs, such as lost profits or revenue, loss of equipment, loss of use of equipment, loss of software, loss of data, costs of substitutes, claims by third parties or otherwise. Coverage also does not apply to connected medical and industrial equipment.

To receive service under this warranty, you must be the original purchaser/user of the product in question. You must obtain a Returned Material Authorization (RMA) number from Tripp Lite. Products must be returned to Tripp Lite with transportation charges prepaid and must be accompanied by a brief description of the problem encountered and proof of date and place of purchase.

Tripp Lite follows a policy of continuous improvement. Product specifications are subject to change without notice.



1111 W. 35th Street, Chicago, IL 60609 USA  
[www.tripplite.com/support](http://www.tripplite.com/support)

## Free Manuals Download Website

<http://myh66.com>

<http://usermanuals.us>

<http://www.somanuals.com>

<http://www.4manuals.cc>

<http://www.manual-lib.com>

<http://www.404manual.com>

<http://www.luxmanual.com>

<http://aubethermostatmanual.com>

Golf course search by state

<http://golfingnear.com>

Email search by domain

<http://emailbydomain.com>

Auto manuals search

<http://auto.somanuals.com>

TV manuals search

<http://tv.somanuals.com>