



## **VideoEdge IP Box Camera**

# **Installation & Operation Guide**

**Version1.5**

***tyco***

Part Number: 8200-2646-00 B0



## **Copyright**

Under copyright laws, the contents of this manual may not be copied, photocopied, reproduced, translated or reduced to any electronic medium or machine-readable form, in whole or in part, without prior written consent of Tyco International Ltd. © Copyright 2009 and its Respective Companies. All Rights Reserved,

American Dynamics

6600 Congress Avenue

Boca Raton, FL 33487, U.S.A.

# Table Of Contents

<b>SAFETY PRECAUTIONS .....</b>	<b>6</b>
<b>1. PRODUCT FEATURES.....</b>	<b>7</b>
1.1 PRODUCT INSTRUCTIONS .....	7
1.2 PRODUCT FEATURES .....	8
1.3 TECHNICAL SPECIFICATIONS .....	8
<b>2. DESCRIPTION OF THE FRONT/REAR VIEW .....</b>	<b>11</b>
2.1 FRONT PANEL AND REAR PANEL .....	11
2.2 FLANK PANEL .....	12
2.3 THE USB FUNCTION .....	14
2.4 BRACKET MOUNT INSTALLATION .....	15
<b>3. INSTALLATION .....</b>	<b>16</b>
3.1 CONNECTING WITH AN NVR .....	16
3.2 CONNECTING WITH A DVR .....	16
3.3 CONNECTING WITH A MULTIPLEXER .....	17
3.4 UPDATING SYSTEM SOFTWARE.....	17
3.5 IP CAMERA SD CARD TROUBLESHOOTING .....	19
<b>4. Network Configuration .....</b>	<b>20</b>
4.1 CABLE CONNECTIONS.....	20
4.1.1 Connect to a computer .....	20
4.1.2 Connect to a LAN Hub (INTRANET) .....	21
4.2 CONFIGURE YOUR IP CAMERA NETWORK SETTINGS .....	22
4.2.1 Enable DHCP Function.....	22
4.2.2 Set IP Address .....	22
4.3 TCP/IP COMMUNICATION SOFTWARE .....	24
4.4 TCP/IP INSTALLATION .....	25

4.5 TCP/IP CONFIGURATION SETTING .....	25
4.6 CONNECTION TESTING.....	27
<b>5. Operation Instructions for the Network.....</b>	<b>29</b>
5.1 MICROSOFT INTERNET EXPLORER .....	30
5.1.1 Connecting the IP camera .....	30
5.1.2 Change Video Setting.....	32
5.1.3 Change the Network Setting .....	36
5.1.4 Change the System Setting .....	47
5.1.5 Change the Application Setting .....	55
5.1.6 Change the SD card Setting .....	63
5.1.7 Change the Pan/Tilt setting .....	64
5.1.8 PPPoE & DDNS.....	65
5.1.9 The Bandwidth Calculator of the IP camera.....	67
<b>6. ADVANCED OPERATION .....</b>	<b>68</b>
<b>7. SPECIFICATIONS.....</b>	<b>71</b>
<b>8. Functions of client PC.....</b>	<b>72</b>
<b>APPENDIX 1. –IP camera UPnP How To.....</b>	<b>73</b>
<b>APPENDIX 2. –The ARP function .....</b>	<b>83</b>
<b>APPENDIX 3. –Register as a DDNS member .....</b>	<b>85</b>
<b>APPENDIX 4. –MPEG4 Bit Rate Lookup Table of IP camera .....</b>	<b>89</b>
<b>APPENDIX 5. –FAQ.....</b>	<b>90</b>



## **SAFETY PRECAUTIONS**

All the following safety and operational instructions to prevent harm or injury to the operator(s) or other persons should be read carefully before the unit is activated.

### **WARNING**

- To prevent fire or shock hazard, avoid exposing this unit to rain or moisture.
- Do not block ventilation openings.
- Do not place anything on top of the unit that might spill or fall into it.
- Do not attempt to service this unit yourself, as opening or removing covers may expose you to dangerous voltage or other hazards. Please refer all servicing to your distributor / retailer.
- Do not use liquid cleaners or aerosols for cleaning.
- To prevent fire or electric shock, do not overload wall outlets or extension cord.
- This unit must be grounded to reduce the risk of electric shocks.
- Indoor use only.
- The installation should be made by a qualified service person.

### **CAUTION**

**RISK OF EXPLOSION IF BATTERY IS REPLACED BY AN INCORRECT TYPE.**

**DISPOSE OF USED BATTERIES ACCORDING TO THE INSTRUCTIONS.**

# 1. PRODUCT FEATURES

## 1.1 Product Instructions

The VideoEdge IP Box Camera **ADCIPEB** is a user-friendly device which combines cutting-edge sophistication with practical reliability and convenience, high performance with smooth remote communication. Just plug in the network cable and you'll get live streaming video and audio anytime, any place. You'll have security you can rely on! The especially high resolution has 520 TV lines, a built-in web server and a Network interface to connect you with the Internet securely and fast.

Other special features include the masking of personal private images with flexible mask-area positioning and size, the self-downloading automatic video codec and other components, and the whole unit is very easy to set up. You can access the network to get smooth images through the real-time and synchronized audio / visual stream provided by the device, because it supports two compression modes, the MJPEG and the MPEG4 -- you can change from one to the other as you wish. The MPEG4 file format is a very small size file, so it can save more images over a longer time and can be set extremely fast. The device also has a built-in website server providing many Internet functions and protocols, including the MDIX protocol which recognizes both the normal and the crossover cables, either of which can connect up with an IP camera.

We hope this device makes it easier for you to get your IP address information. This unit supports the USB interface which helps you to very easily get an IP address to open the IE browser: just type in your IP address to the browser and you can access your IP camera.

The device can hopefully provide the advanced motion detection function to improve your network surveillance with both the powerful and enhanced multi-zone and multi-sensitivity modes of detection. We believe this day & night IP camera is the right answer to all your network surveillance problems. Try it and you'll see.

**NOTE: Our camera already has a built-in refocus for its Day and Night function. So users don't need to have an IR lens in this camera, they can just use a normal lens. If an IR lens is used, the focus will become blurred.**

## 1.2 Product Features

- 1/3" SONY Super HAD CCD.
- Mechanical IR Cut Filter.
- MPEG4 / MJPEG video compression.
- High resolution: 520 TV
- Embedded web server.
- Supports a built-in microphone.
- Supports motion detection.
- Supports the SD card for alarms & scheduled recording.
- Supports USB interface for basic network setup.
- Supports day & night function.

## 1.3 Technical Specifications

<b>General:</b>	• Built-in Web Server and network interface. You don't need a PC to operate.
<b>Installation:</b>	• Fast and simple installation – connect to your network and assign an IP address within a minute. The null modem cable enclosed helps you to set up without a network.
<b>Camera:</b>	• Digital, 24-bit color.
<b>Image sensor:</b>	• 1/3 inch Sony Super HAD CCD sensor. • MPEG4 resolution (pixels): 640x480, 320x240
<b>Exposure:</b>	• Automatic AGC. • White Balance: Indoor installation. • Exposure times: 1/60-1/100,000s.
<b>Sensitivity:</b>	• Minimum Illumination: 0.5 Lux. F1.2



<p><b>Image:</b></p>	<ul style="list-style-type: none"> <li>• Image frame rate: up to 30 (25) frames/second.</li> <li>• Supports two compression modes, the Motion - JPEG and the MPEG4.</li> <li>• 5 levels of compression provided. The file size of an M-JPEG compressed image depends on the image's actual content. Images with a lot of detail will generate bigger files. The level of compression determines the image quality. High compression requires smaller files while low compression gives you finer image quality along with bigger files. The table below contains the average file size in Kbytes, derived from real life tests.</li> </ul> <table border="1" data-bbox="272 368 1021 521"> <thead> <tr> <th>NTSC</th> <th>Highest</th> <th>High</th> <th>Medium</th> <th>Low</th> <th>Lowest</th> </tr> </thead> <tbody> <tr> <td>352 * 240</td> <td>31 KByte</td> <td>22 KByte</td> <td>18 KByte</td> <td>12 KByte</td> <td>9 KByte</td> </tr> <tr> <td>720 * 480 (Frame)</td> <td>62 KByte</td> <td>48 KByte</td> <td>36 KByte</td> <td>25 KByte</td> <td>19 KByte</td> </tr> <tr> <td>720 * 240</td> <td>40 KByte</td> <td>30 KByte</td> <td>23 KByte</td> <td>18 KByte</td> <td>15 KByte</td> </tr> <tr> <td>720 * 480 (Field)</td> <td>62 KByte</td> <td>48 KByte</td> <td>34 KByte</td> <td>25 KByte</td> <td>19 KByte</td> </tr> <tr> <td>176 * 112</td> <td>9 KByte</td> <td>8 KByte</td> <td>6 KByte</td> <td>5 KByte</td> <td>4 KByte</td> </tr> </tbody> </table> <table border="1" data-bbox="272 560 1021 711"> <thead> <tr> <th>PAL</th> <th>Highest</th> <th>High</th> <th>Medium</th> <th>Low</th> <th>Lowest</th> </tr> </thead> <tbody> <tr> <td>352 * 288</td> <td>27 KByte</td> <td>22 KByte</td> <td>18 KByte</td> <td>12 KByte</td> <td>9 KByte</td> </tr> <tr> <td>720 * 576 (Frame)</td> <td>58 KByte</td> <td>43 KByte</td> <td>32 KByte</td> <td>27 KByte</td> <td>23 KByte</td> </tr> <tr> <td>720 * 288</td> <td>40 KByte</td> <td>30 KByte</td> <td>20 KByte</td> <td>17 KByte</td> <td>14 KByte</td> </tr> <tr> <td>720 * 576 (Field)</td> <td>58 KByte</td> <td>48 KByte</td> <td>32 KByte</td> <td>24 KByte</td> <td>20 KByte</td> </tr> <tr> <td>176 * 112</td> <td>8 KByte</td> <td>7 KByte</td> <td>6 KByte</td> <td>5 KByte</td> <td>4 KByte</td> </tr> </tbody> </table>	NTSC	Highest	High	Medium	Low	Lowest	352 * 240	31 KByte	22 KByte	18 KByte	12 KByte	9 KByte	720 * 480 (Frame)	62 KByte	48 KByte	36 KByte	25 KByte	19 KByte	720 * 240	40 KByte	30 KByte	23 KByte	18 KByte	15 KByte	720 * 480 (Field)	62 KByte	48 KByte	34 KByte	25 KByte	19 KByte	176 * 112	9 KByte	8 KByte	6 KByte	5 KByte	4 KByte	PAL	Highest	High	Medium	Low	Lowest	352 * 288	27 KByte	22 KByte	18 KByte	12 KByte	9 KByte	720 * 576 (Frame)	58 KByte	43 KByte	32 KByte	27 KByte	23 KByte	720 * 288	40 KByte	30 KByte	20 KByte	17 KByte	14 KByte	720 * 576 (Field)	58 KByte	48 KByte	32 KByte	24 KByte	20 KByte	176 * 112	8 KByte	7 KByte	6 KByte	5 KByte	4 KByte
NTSC	Highest	High	Medium	Low	Lowest																																																																				
352 * 240	31 KByte	22 KByte	18 KByte	12 KByte	9 KByte																																																																				
720 * 480 (Frame)	62 KByte	48 KByte	36 KByte	25 KByte	19 KByte																																																																				
720 * 240	40 KByte	30 KByte	23 KByte	18 KByte	15 KByte																																																																				
720 * 480 (Field)	62 KByte	48 KByte	34 KByte	25 KByte	19 KByte																																																																				
176 * 112	9 KByte	8 KByte	6 KByte	5 KByte	4 KByte																																																																				
PAL	Highest	High	Medium	Low	Lowest																																																																				
352 * 288	27 KByte	22 KByte	18 KByte	12 KByte	9 KByte																																																																				
720 * 576 (Frame)	58 KByte	43 KByte	32 KByte	27 KByte	23 KByte																																																																				
720 * 288	40 KByte	30 KByte	20 KByte	17 KByte	14 KByte																																																																				
720 * 576 (Field)	58 KByte	48 KByte	32 KByte	24 KByte	20 KByte																																																																				
176 * 112	8 KByte	7 KByte	6 KByte	5 KByte	4 KByte																																																																				
<p><b>General I/O:</b></p>	<ul style="list-style-type: none"> <li>• Input/Output connector to trigger the camera vis-a-vis external events, for instance a door sensor with a solenoid.</li> </ul>																																																																								
<p><b>System Requirements:</b></p>	<ul style="list-style-type: none"> <li>• Compatible with operating systems such as Windows 2000 and Windows XP.</li> <li>• Internet Explorer 6.x.</li> <li>• Non-network modem installation needs Windows PC.</li> </ul>																																																																								
<p><b>Supported Protocols:</b></p>	<ul style="list-style-type: none"> <li>• TCP/IP, DHCP, HTTP, UDP, SNTP, ICMP, DDNS, DNS, UPnP, RTP, RTSP, FTP**, SMTP** (** FTP and SMTP functions are for PAL version only.)</li> </ul>																																																																								
<p><b>Security:</b></p>	<ul style="list-style-type: none"> <li>• Password protection available, unless exposure is preferred.</li> </ul>																																																																								
<p><b>Connections:</b></p>	<ul style="list-style-type: none"> <li>• RJ 45 twisted pair cable, 10/100 Mbit Ethernet network connection.</li> <li>• Input/Output connector to trigger the camera vis-a-vis external events.</li> </ul>																																																																								
<p><b>Operating Environment:</b></p>	<ul style="list-style-type: none"> <li>• Operation temperature: 41-122° F (5-50° C).</li> <li>• Humidity: 20-80% RHG, non-condensing.</li> </ul> <p><b>WARNING:</b> Avoid aiming the camera at the sun or other extremely bright lights. Irrespective of whether the camera is used or unused, the CCD image sensor may be damaged if exposed to very bright objects.</p>																																																																								

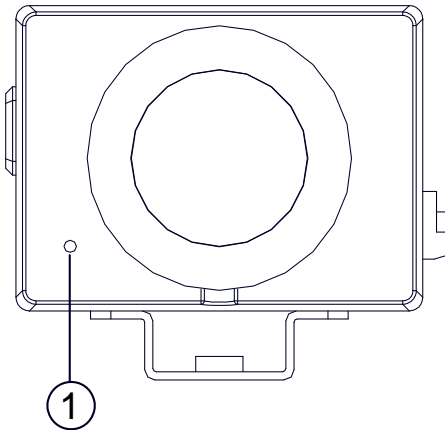


<b>Dimensions / Weight</b>	<p>Dimensions and weight are as follows.</p> <ul style="list-style-type: none"> <li>• Height: 55 (mm)</li> <li>• Width: 95 (mm)</li> <li>• Length: 62 (mm)</li> <li>• Weight: 306 g</li> </ul> <p>(Not including power supply and mini-tripod.)</p>
<b>Accessories Included:</b>	<ul style="list-style-type: none"> <li>• CD-R x 1</li> <li>• Power supply: 12V DC/2A.</li> <li>• Instruction manual.</li> </ul>

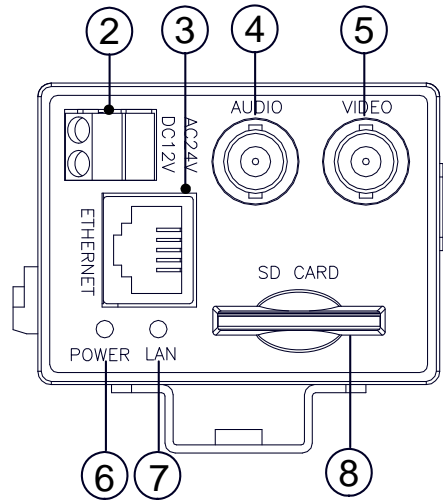
## 2. DESCRIPTION OF THE FRONT/REAR VIEW

### 2.1 Front Panel and Rear Panel

-- Front Panel --



-- Rear Panel --



1 **MICROPHONE:** The IP camera has an additional audio function. The device has a microphone built into its front panel which records sound.

2 **Plug Inlet:** An AC 24V or a DC 12V inlet that connects to an external power supply.

**NOTE:** This device's requires AC 24 voltage, which is within the range of the SELV (Separated or safety extra-low voltage).

3 **ETHERNET:** This is a standard RJ-45 connector for 10/100 Mbps Ethernet networks.

4 **AUDIO OUT Connector:** The connector provides the unit's audio signal to a speaker.

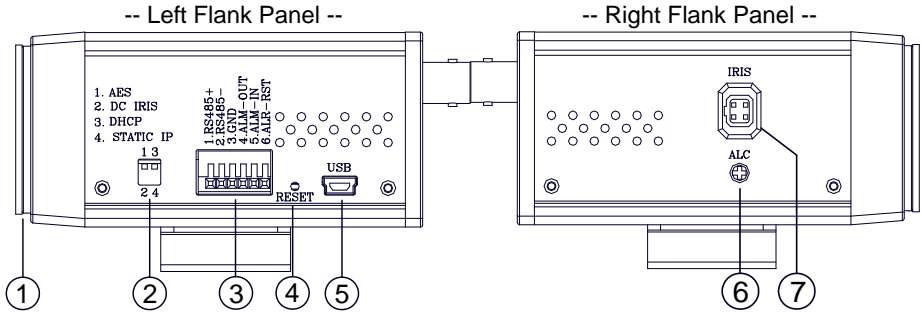
5 **VIDEO OUT Connector:** The connector provides the unit's composite video signals to a monitor.

6 **POWER indicator:** Indicates the power status of the unit. The green light indicates the unit is activating. The red light indicates the power is on and the SD card cannot be removed.

7 **LAN indicator:** Indicates the LAN status of the unit. The green light indicates the 100 Mbps Ethernet network is activating. The red light signals the LAN is data linking.

8 **SD CARD slot:** This is used for system software updating and archiving / accessing critical images.

## 2.2 Flank Panel

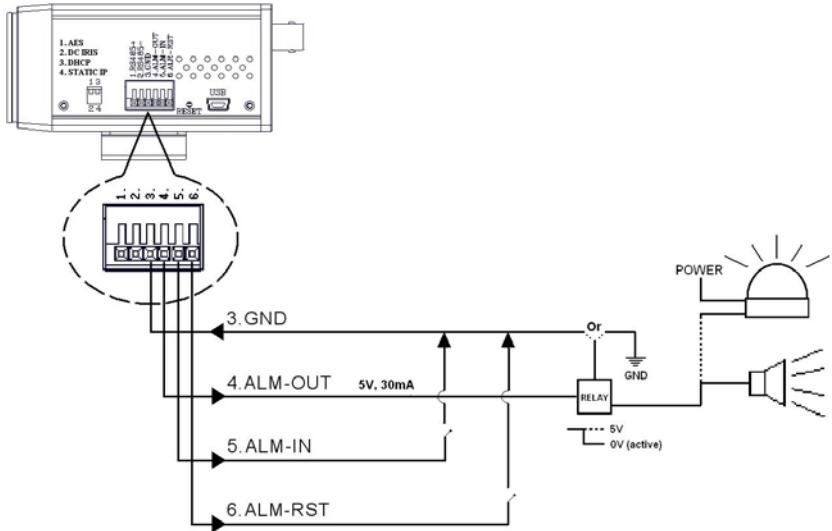


- 1. Lens Mount:** This IP camera is used with either a C or a CS mount lens.
- 2. DIP Switch:**

	<b>1. AES:</b> Auto electric shutter.
	<b>2. DC IRIS:</b> Use an auto iris (DC drive)
	<b>3. DHCP:</b> Turn On / Turn Off to use the DHCP protocol. If the switch points upwards, the device can change the setup of network function (enable/disable) via the network.
	<b>4. STATIC IP:</b> If the switch points down, the device can't obtain an IP address from the DHCP server. This option is needed to configure the network communication settings. (*In the default factory configuration, this DIP Switch is in the Down position.)

- 3. ALARM I/O:** This is a 6-PIN connector including the **ALARM IN/OUT**, **ALARM RESET** and **GROUND** items for connecting with external devices.
  - **RS485 pin: D+**
  - **RS485 pin: D-**
  - **GND:** Ground Contact.
  - **ALARM IN (INPUT):** This is an alarm input which can be programmed in the menu system to Normally Open or Normally Closed. ( )
  - **ALARM OUT (OUTPUT):** This is an alarm-output trigger. Connect this to external devices such as buzzers or lights. ( )
  - **ALARM RST (RESET):** This pin connects to an alarm-clear device for clearing an alarm. ( )

**Alarm wiring diagram:**



- 4. **RESET:** Recover to factory default.
- 5. **5pin MINI USB Port:** The user can use a USB device cable to connect the IP camera to the USB port on the PC.
- 6. **ALC VR:** Iris control VR.

When an auto iris (DC Drive) lens is used, this VR is used to adjust the iris for different lighting environments. Adjust the VR clock-wise to open the iris and counter-clockwise to close the iris of the camera.

- 7. **IRIS:** Auto iris connector.

This camera works with a DC drive auto iris lens. Please refer to the pin assignment marked on the camera when connecting the auto iris lens.

## 2.3 The USB function

By connecting the IP camera with a PC via the USB connector, the IP camera can provide two different functions.

1. Insert an SD card: As a card reader.

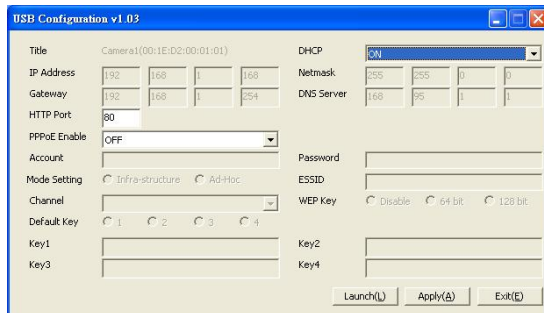
Insert an SD card into the IP camera, then connect to the PC. You might transfer files between the SD card and the PC. Once you've connected your IP camera to your computer, the Windows system will detect the connection and ask you what you want to do with your SD card.

In other words, if the user connects the IP camera with an SD card and the PC via the USB connector, the IP camera can be used as a normal card reader.

2. Remove an SD card: As a configuring tool.

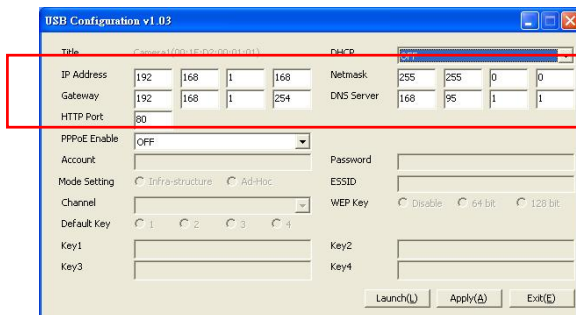
Before using the USB configuration setting page, please remember to remove the SD card or your PC will read the SD card and won't show this window.

### DHCP ON



The screenshot shows the 'USB Configuration v1.03' window. The 'DHCP' dropdown menu is set to 'ON'. The IP Address is 192.168.1.168, Gateway is 192.168.1.254, and HTTP Port is 80. Other settings like Netmask, DNS Server, and WEP Key are also visible.

### DHCP OFF (default)



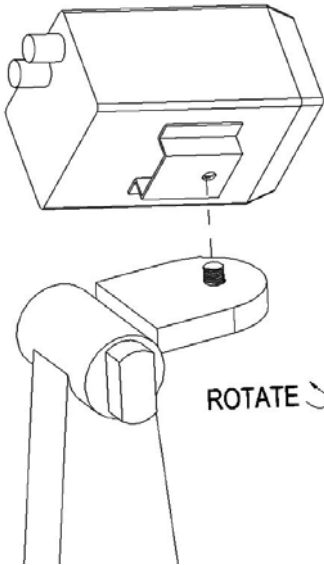
The screenshot shows the 'USB Configuration v1.03' window with the 'DHCP' dropdown menu set to 'OFF'. A red box highlights the DHCP dropdown and the IP Address, Gateway, and Netmask fields. A red arrow points from the 'Network Setting' label to the DHCP dropdown.

Network  
Setting

**NOTE:** After changing the settings, please click the "Apply" button. All of the options will be effective after removing the USB connector.

**NOTE:** After the IP address has been changed and/ or reset, please unplug the network cable, then plug it once again to make sure the network connection is in normal mode.

## 2.4 Bracket mount installation



The underside of the camera has a screw hole for attaching the bracket to the camera.

Please follow the steps below to install the camera on the bracket.

**Step 1:** Rotate the screw in the bracket to fix the bracket to the camera.

**Step 2:** Fix the bracket to the ceiling.

**Step 3:** Rotate & fix the camera angle fixer at the selected angle.

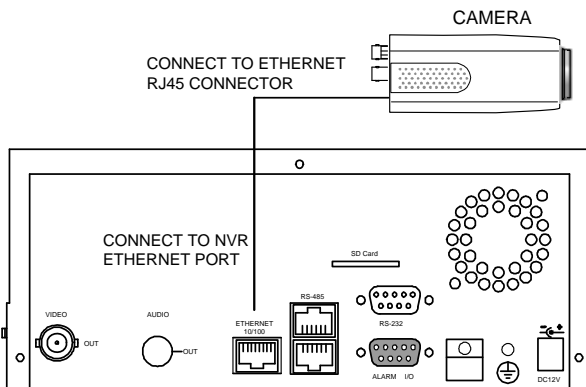
### 3. INSTALLATION

Please follow the instructions and the diagram below to set up the system.

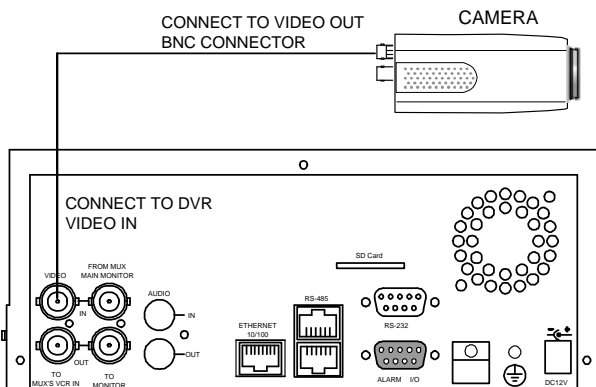
**NOTE:** The IP camera is linked by its Video Out connection via a BNC connector to a monitor's Video In connection. If this connection is there, you can see some information on the monitor screen, such as the IP camera factory default Static IP address(192.168.1.168). But the IP camera Static IP address can only appear if there is a connection between the IP camera and another device. If there is no such connection, the IP camera factory default Static IP address will not appear on the monitor screen.

#### 3.1 CONNECTING WITH AN NVR

Use a straight LAN cable to connect directly to an NVR.

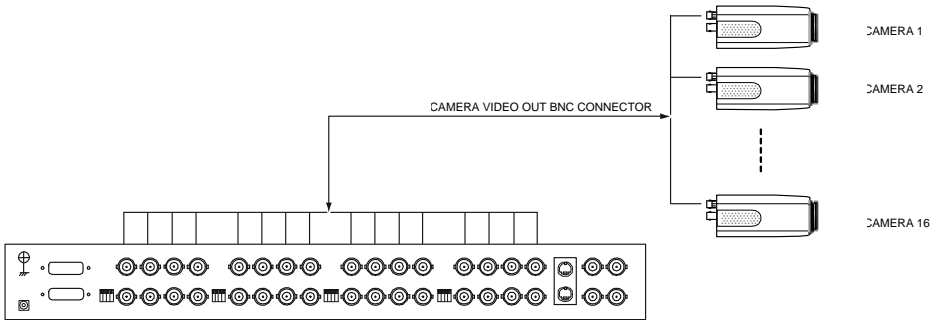


#### 3.2 CONNECTING WITH A DVR





### 3.3 CONNECTING WITH A MULTIPLEXER



### 3.4 UPDATING SYSTEM SOFTWARE

If the system software of the IP camera needs to be upgraded, please take the following steps to safely process it.

**NOTE: Before carrying out the following procedures, please ensure the SD card is working and the file of the system firmware is intact**

1. Format an SD card using the FAT format.
2. Create a directory named LANCAM in the SD card if it does not exist.
3. Copy the file of UPDATE.BIN to the LANCAM-directory.

**NOTE: If the IP camera is running, please power it off first.**

4. Insert the SD CARD into the IP camera.
5. Remove the Ethernet cable from the RJ-45 port and then power on the IP camera.

In 5 to 10 seconds, a message reading "UPDATE PROCESSING" will show up on the screen on a blue background; if not, please recheck steps 1 to 5 carefully or inform your technical support while ignoring the following steps.

6. DO NOT power off the IP camera while this update process is running until the message "UPDATE OK RESET PLEASE" appears on the screen; it might take 15 to 30 seconds to appear.

If the message "UPDATE NG RESET PLEASE" appears rather than "UPDATE OK RESET PLEASE", please write down the error messages shown on the screen and inform your technical support, while ignoring the following steps.

7. Power off the IP camera when this update process is finished, then remove the SD card from the IP camera.
8. Reconnect the Ethernet cable to the RJ-45 port as necessary.
9. Power ON the IP camera and it will work normally if the entire update procedure goes correctly.
10. Verify the version of the system software.

### **WARNING:**

1. **Don't use the NTFS format in step 1.**
2. **Steps 1 to 3 have to be done on a PC.**
3. **Make sure the file of UPDATE.BIN is a correct one in step 3, or the IP camera will not work normally after being updated.**
4. **If the power of the IP camera is suddenly lost in step 6, please remove the SD card first and turn on the IP camera next to test its operation. If the IP camera remains working normally, please go back to step 3; otherwise, please inform your technical support.**
5. **In step 7, if the SD card is not removed and the IP camera does not get online as well, the updating process must be repeated again after rebooting the IP camera.**
6. **Make sure that the SD card is inserted in the correct position in step 4, or the IP camera will suffer permanent physical damage.**
7. **If the message "CSUM ERROR" appears immediately after step 6, it implies a problem in the file of UPDATE.BIN.**
8. **Don't interrupt the process while the unit is updating itself; proceed with an SD card not including any system software of the unit, or else the unit will crash.**

### 3.5 IP camera SD card Troubleshooting

1. Check if the SD card position is correct or not. Please refer to the manual for the related information.
2. Correctly insert the SD card after powering the IP camera on. The "SD" icon displays in the upper-right corner of the monitor screen. If not, it means the device detection has failed. Please contact your technical support and ignore the following steps.
3. If a check mark appears, please check the following:
  - a. Is it really an SD "Memory" Card?
  - b. Is this SD card formatted in the FAT16 format?
  - c. Connect the SD card with a PC and test to see whether the PC can read the data or not.
  - d. Does this SD card still have the capacity for storing data?
  - e. Is the SD card set to write?

If there is no check mark beside the "SD" icon, please go on to the next step.

If all the answers are "yes" but the check mark still persists, please contact your technical support and ignore the following steps.

4. Ensure the "SD CARD ENABLE" function is activated in the ALARM and SCHEDULE pages if there is no check mark appears beside the "SD" icon on the screen.
5. Read the data on the web page of "sdget.htm" after recording. If the data cannot be read through the network, please read it instead in a PC, check the data stored in the "LANCAM" directory and contact your technical support regardless of whether there is data or not.

#### **WARNING:**

1. **Performing this troubleshooting process may need a monitor, a PC, a card reader and some cables.**
2. **If the SD card is removed while storing or accessing data, the data will be lost.**
3. **If there is a check mark beside the "SD" icon, it means the SD card has been inserted into the IP camera but cannot perform its writing function. Possible reasons are:**
  - a. **It is not an SD memory card.**
  - b. **The SD card is unformatted or formatted in a non-FAT16 or non-FAT12 format.**
  - c. **The file system is damaged.**
  - d. **The capacity of the SD card is full.**
  - e. **The SD card is set to be read only.**
4. **Turn off the power before inserting the SD card. Otherwise the unit may shut down.**



## 4. Network Configuration

### 4.1 Cable Connections

Please follow the instructions below to connect your IP camera to a computer or a network and to choose a proper RJ-45 cable configuration for connections.

#### Physical specifications of the RJ-45 cable for Ethernet

<b>Wire Type</b>	Cat. 5
<b>Connector Type</b>	RJ-45
<b>Max. Cable Length</b>	100 m
<b>Hub Wiring Configuration</b>	Straight Through
<b>PC Wiring Configuration</b>	Straight

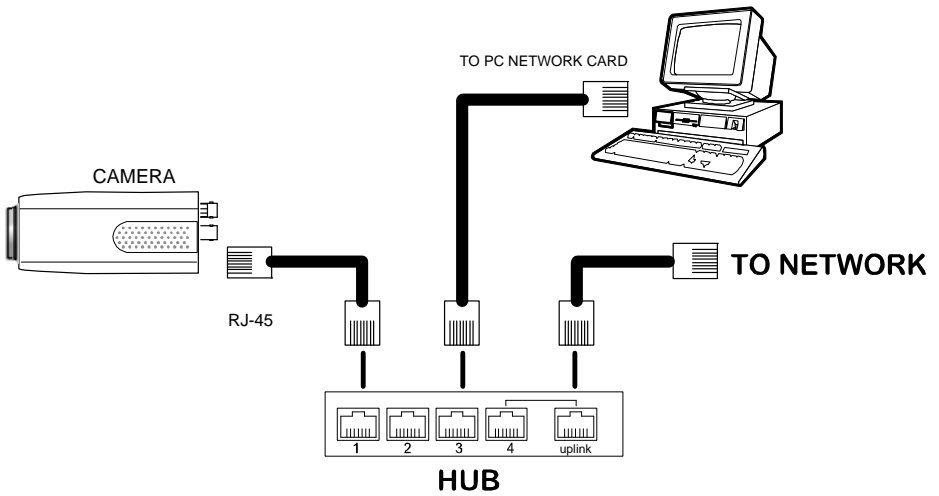
#### 4.1.1 Connect to a computer

Use a straight LAN cable to connect directly to a computer.



#### 4.1.2 Connect to a LAN Hub (INTRANET)

The RJ-45 PIN configuration for connecting with a LAN Hub is shown below.



## 4.2 Configure Your IP Camera Network Settings

Upon connecting with the network hardware, you need to activate the network function and configure the proper network settings of the IP camera.

### 4.2.1 Enable DHCP Function

This function can only work if the LAN, which the unit is connected to, has a DHCP server. If the DHCP server is working, please move the dip switch points up to **3** on the flank panel; now the IP camera will obtain an IP address automatically from the DHCP server. In this instance, please skip section 4.2.2 (Set IP address) and follow section 4.3 (TCP/IP Communication Software).

### 4.2.2 Set IP Address

You need to set an IP address for the unit if the LAN unit isn't connected to a DHCP server. Otherwise, please follow the instructions given below:

Set the **IP**, **MASK** and **GATEWAY**. The following is a sample setting.

IP:                    192.168.1.X  
MASK:                255.255.255.0  
GATEWAY:            0.0.0.0

**NOTE:** When only one unit of the IP camera is connected to a computer or LAN, you can freely assign an IP address for the IP camera. For example, there is a range of IP camera IP addresses from 192.168.1.1 to 192.168.1.255. You can pick one for use from the range of the IP. It's not necessary to set MASK and GATEWAY; leave the settings as default.

When an IP camera is connected to a WAN, you must acquire a unique, permanent IP address and correctly configure the MASK and GATEWAY settings according to your network architecture. If you have any questions regarding those settings, please consult a qualified MIS professional or your ISP.

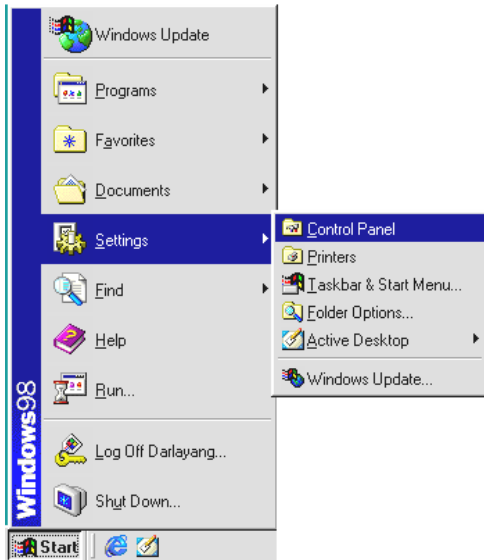
**NOTE:** When connecting to a network, each connected IP camera must be assigned a unique IP, which must be in the same class type as your network address. IP addresses are written as four sets of numbers separated by periods; for example, 192.168.1.1. Therefore, if the connected network is identified as Class C, for example, the first three sets of numbers of the IP camera IP address must be the same as the network address. If the connected network is identified as Class B, the first two sets of numbers of the IP camera IP address must be the same as the network address. If you have any questions regarding these settings, please consult a qualified MIS professional or your ISP.



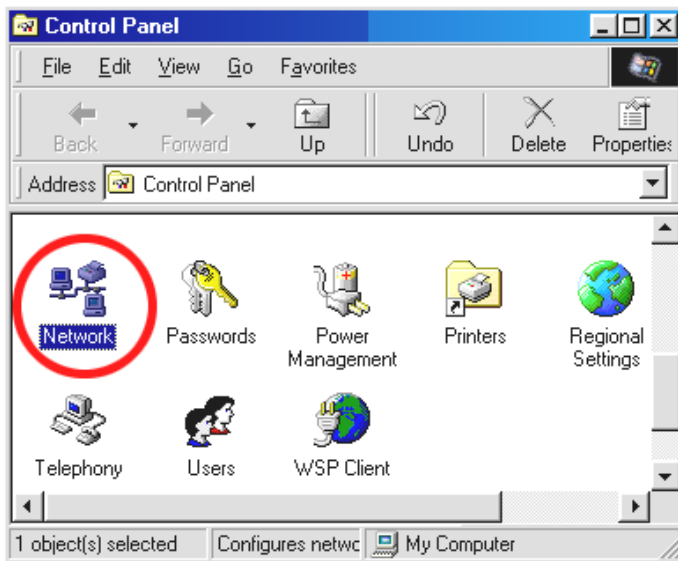
### 4.3 TCP/IP Communication Software

Follow the procedure below to install the TCP/IP communication program in your computer.

1. Open the **Start** menu from your computer, and select the **Settings/Control Panel** option.



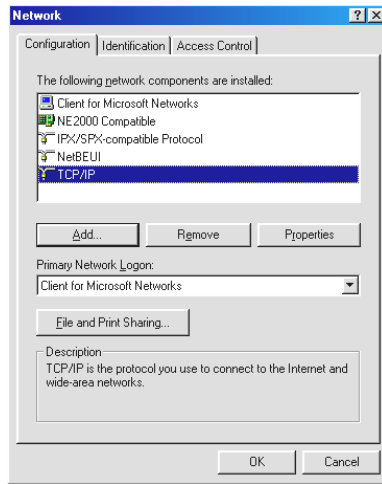
2. Double click the **Network** icon to enter the windows.



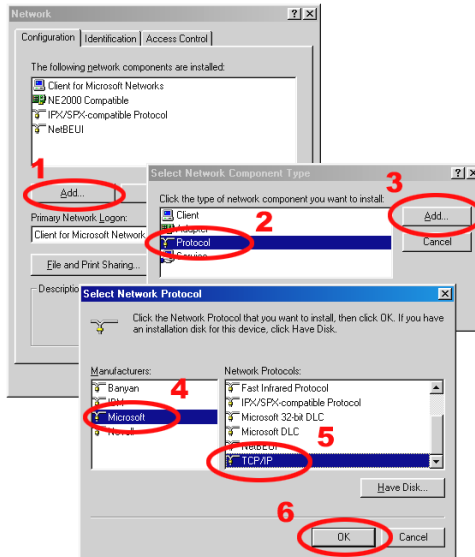
3. Click on the **Configuration** tag, and check if the TCP/IP is included among the network



components list. If the TCP/IP is included, please process section 4.5. If it is not included, please follow section 4.4 to install the TCP/IP.



#### 4.4 TCP/IP Installation



During the installation, you will be requested to insert the Windows CD-ROM. After installation, the PC may be restarted.

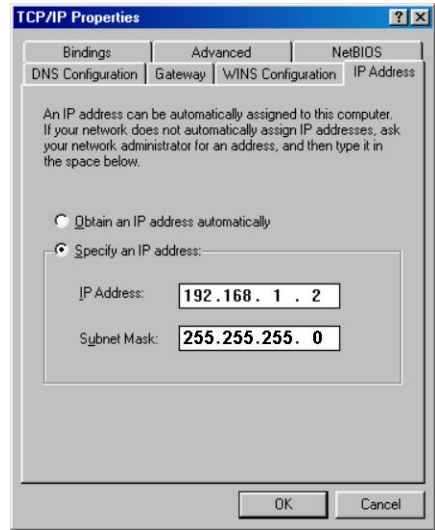
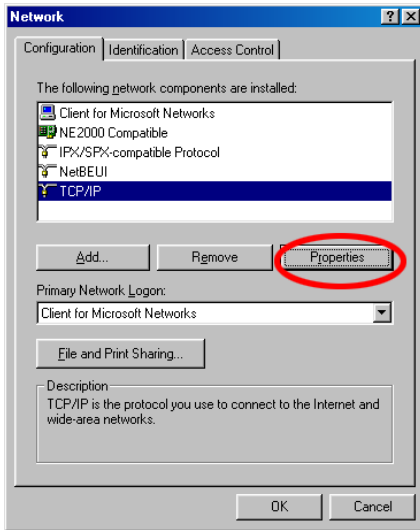
#### 4.5 TCP/IP configuration setting

1. **Click Start → Settings → Control Panel → Network.**



2. Select TCP/IP, and then click Properties.

**NOTE:** Before processing the IP camera installation in a WAN, please make sure the Internet connection works properly. If not, please contact your ISP provider.



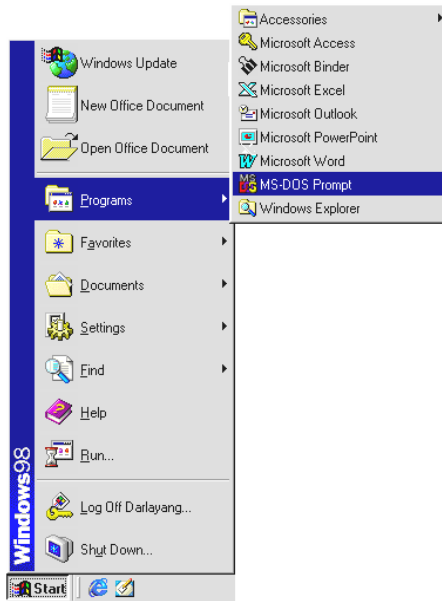
If you are using a DHCP server, please select Obtain an IP address automatically. Any assigned IP address for the connected IP cameras must be in the same class type as the server. If there is no DHCP server, please select specify an IP address and type in the IP address of your PC. This IP address must be different from other network IP devices but in the same class type.

**NOTE:** The IP address of an IP camera in a network must be unique to itself as opposed to those of the other chosen PCs, but in the same class type.

## 4.6 Connection Testing

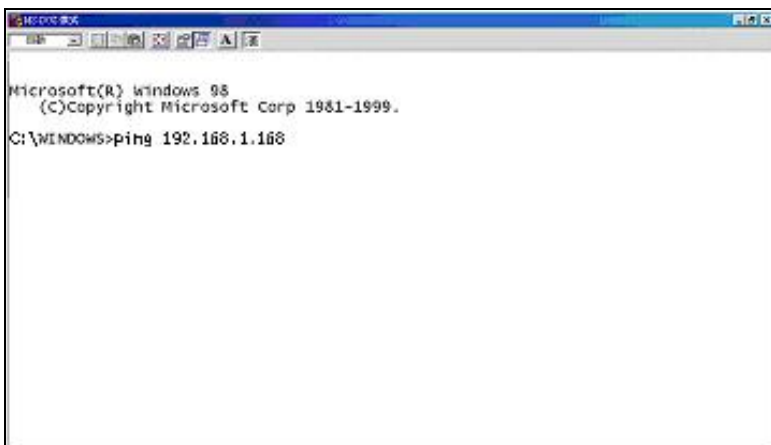
With the previous settings, follow the instructions below to ensure whether you have established the connection successfully.

1. Click **Start → Programs → MS-DOS Prompt**

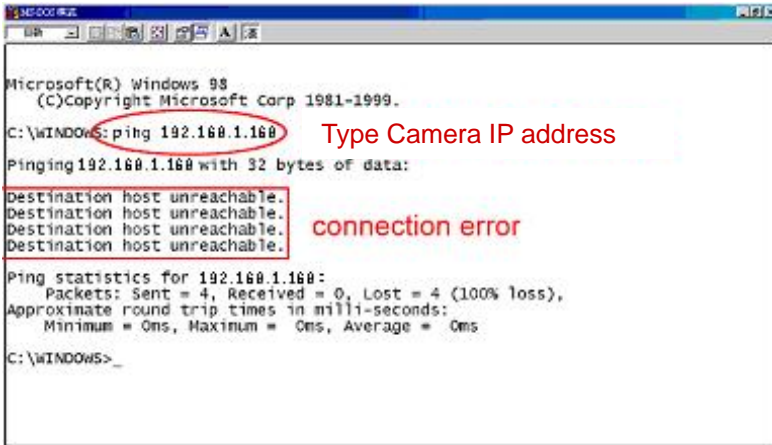


2. Enter **ping 192.168.1.168**, then enter. (See the sample screen below).

**\*\* This is the IP address of IP camera that is assigned for the connected IP camera in step2.**



If you receive a response as in the sample screen below, the connection hasn't been successfully established. Please re-check all the hardware and software installations by repeating sections 4.4 and 4.5. If you still can't establish the connection after rechecking, please contact your dealer.

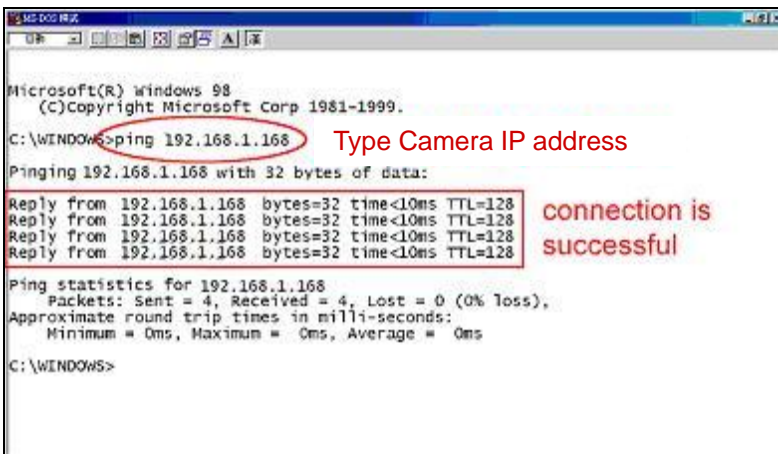


```
Microsoft(R) Windows 98
(C)Copyright Microsoft Corp 1981-1999.
C:\WINDOWS>ping 192.168.1.168
Pinging 192.168.1.168 with 32 bytes of data:
Destination host unreachable.
Destination host unreachable.
Destination host unreachable.
Destination host unreachable.
Ping statistics for 192.168.1.168:
    Packets: Sent = 4, Received = 0, Lost = 4 (100% loss),
    Approximate round trip times in milli-seconds:
        Minimum = 0ms, Maximum = 0ms, Average = 0ms
C:\WINDOWS>
```

Type Camera IP address

connection error

If you receive a response as in the sample screen below, you have successfully made the connection.



```
Microsoft(R) windows 98
(C)Copyright Microsoft Corp 1981-1999.
C:\WINDOWS>ping 192.168.1.168
Pinging 192.168.1.168 with 32 bytes of data:
Reply from 192.168.1.168 bytes=32 time<10ms TTL=128
Reply from 192.168.1.168 bytes=32 time<10ms TTL=128
Reply from 192.168.1.168 bytes=32 time<10ms TTL=128
Reply from 192.168.1.168 bytes=32 time<10ms TTL=128
Ping statistics for 192.168.1.168
    Packets: Sent = 4, Received = 4, Lost = 0 (0% loss),
    Approximate round trip times in milli-seconds:
        Minimum = 0ms, Maximum = 0ms, Average = 0ms
C:\WINDOWS>
```

Type Camera IP address

connection is successful

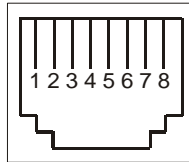
## 5. Operation Instructions for the Network

The Microsoft Internet Explorer in a PC provides the functions of monitoring remote zones or watching recorded data through the TCP/IP protocol. The details are listed as follows.

RJ-45 PIN configuration for Ethernet

PIN NO.	PIN Assignment
1.	TX +
2.	TX -
3.	RX +
4.	Not Connected
5.	Not Connected
6.	RX -
7.	Not Connected
8.	Not Connected

RJ-45 socket



Physical specification for Ethernet

<b>Wire type</b>	Cat. 5
<b>Connector type</b>	RJ-45
<b>Max. cable length</b>	100 m
<b>Hub wiring configuration</b>	Straight Through or Cross Over
<b>PC wiring configuration</b>	Straight Through or Cross Over

## 5.1 Microsoft Internet Explorer

### 5.1.1 Connecting the IP camera

1. Start up Microsoft Internet Explorer, and then follow the steps below to connect the IP camera.
2. Click on the URL block at the top of the window.
3. Enter the URL address of the IP camera into the URL block and press the **"Enter"** button to enter the home page.
4. Scroll to the bottom of the page, with its six icons, "Video", "Network", "System", "Application", "SD card" and "Pan/Tilt". Whichever you click, the page headlined "Enter Network Password" will appear.
5. Enter the "User Name" and "Password" in the appropriate spaces.
6. Click on the **"OK"** button to set your entries, and automatically exit the page.

**NOTE:** The default "User Name" and "Password" are admin and 9999 respectively.

**NOTE:** The page headlined "Enter Network Password" is shown below. Please enter the user name and password of the IP camera when you see it. If either the user name or the password is incorrect, please check the input data and rectify it as necessary.

**NOTE:** Once authorized successfully, it will not appear again until you close the window and reconnect it.

**NOTE:** The initial sequence of proceeding is to type in your IP address and click the "Enter" button to access the home page. If and when you revise or change data in the "SYSTEM USERS" page, the sequence will alter to initially show the "Enter Network Password" page.



Connect to 192.168.0.92

NETWORK

User name:

Password:

Remember my password

OK Cancel





## Browsing images from the IP camera

The images from the IP camera are displayed on the home page when online with the IP camera. There are also additional settings provided on the home page. MJPEG mode or MPEG4 mode display different display formats on their home page.



Homepage of MJPEG mode

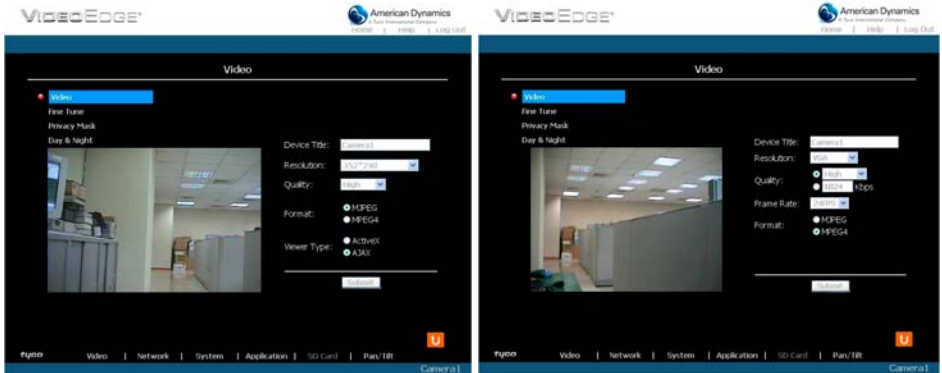
Homepage of MPEG4 mode

- Click on the **Video** button to enter the image-setting page.
- Click on the **Network** button to enter the network-setting page.
- Click on the **System** button to enter the system-setting page.
- Click on the **Application** button to enter the application-setting page.
- Click on the **SD card** button to open the SD card- Filelist of the Memory Card window, if the SD card is inserted.
- Click on the **Pan/Tilt** button to change the Pan/Tilt/Zoom settings.
- Click on the  button to change the time/date display mode.
- Click on the  button to switch high/low speed network.
- Click on the  button to play the live audio while the audio function is set to ON. Click once again to deactivate.
- Click on the  button to archive AVI videos into your PC. Click once again to deactivate. In the recording mode, there will appear a red blinking icon  in the upper-right hand corner of the image. The AVI file will be saved in the path of **c:\**.
- **Digital zoom** function: Click on the video display area, and it will show the zoom-in images. Double click to see the maximum size. Click on the right mouse button on the video display area, and it will show the zoom-out images. Double click the right mouse button to come back to the normal size. (MPEG4 mode only)

## 5.1.2 Change Video Setting

Please follow the steps below to change the image setting through the network as necessary.

1. Click on the **Video** button on the home page to enter the image-setting page.



Video setting page of MJPEG mode

Video setting page of MPEG4 mode

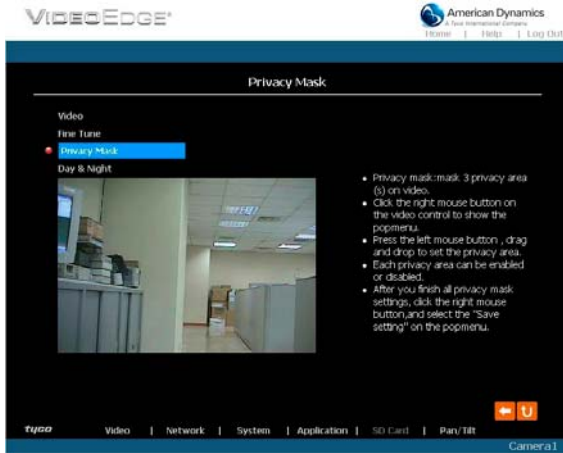
2. Adjust the image setting including “Device Title”, “Resolution”, “Quality”, “Frame rate” (MPEG4 mode only), “Format”, “Viewer Type” (MJPEG mode only), and “MJPEG Deinterlace” (MJPEG mode only) as necessary.
3. Click on the **Submit** button to submit the new image setting.
4. Click on the **Fine Tune** button to enter the Video Fine Tune page to set the details of the device including: “White Balance”, “Flickerless”, “Mirror”, “High Speed Shutter”, “BLC Mode”, “Backlight”, “Brightness”, “Contrast”, “Saturation” and “Sharpness”. Click on the **Default** button to reset all the settings.

**NOTE: The revised image will appear immediately after any change is made.**



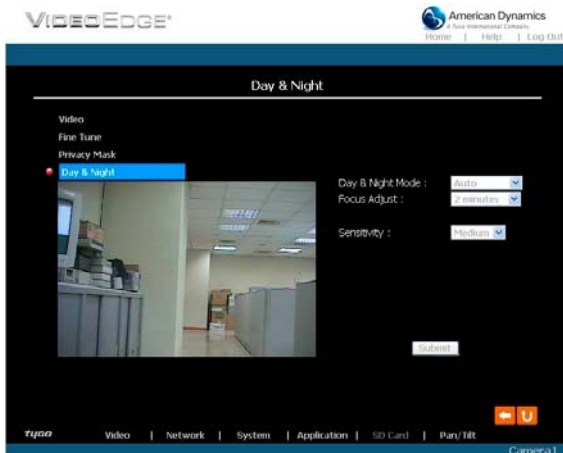


5. Click on the **Privacy Mask** button to enter the Privacy Mask page.



6. Click on the **Day & Night** button to enter the Day & Night page.

- i. Click on the drop-down list to choose the Day & Night mode of “Auto”, “Day mode”, “Night mode” and “Schedule”.
- ii. Set the values of Focus Adjust and Sensitivity.
- iii. Click on the **Submit** button to submit the new Day & Night setting.



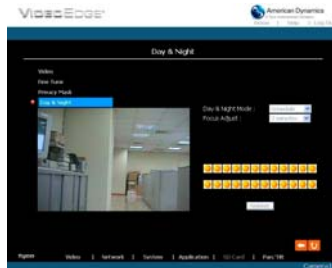
**NOTE:**

**The Focus Adjust function:**

To achieve ideal sharpness and the best focus, every time you reboot the camera, it will automatically switch from color mode to B/W mode. Click on the drop-down list

to set the period of the focus adjustment at “30 seconds”, “1 minute”, “2 minutes”, “3 minutes”, “5 minutes”, and “10 minutes”, or just select “disable” to deactivate the function.

**NOTE:** In the “Schedule” mode, you can click the icon to set the Day ☀️ or Night 🌙 mode of each hour. “0” means “00:00–00:59”, “1” means “01:00–01:59”, and so on.



7. Click on the **Home** button to return to the home page while the new image setting acts on the images to effect the desired changes instantly. (If the setting has not been changed by the above steps, any (re)entry onto the home page will find images in their earlier or original setting.)

### Exchange the image format

1. Select one of the formats then press the **Submit** button.
2. The IP camera will restart automatically after several seconds.

### Description of function keys:

#### MPEG4 mode:

<b>Device Title:</b>	Enter the camera title in the given space.
<b>Resolution:</b>	Scroll to choose the image resolution from “Full D1”, “VGA”, “2CIF”, “Half VGA”, “CIF” or “QVGA”.
<b>Quality:</b>	Scroll to choose the image quality out of a spectrum of qualities ranging from “highest”, “high”, “medium”, and “low” to “lowest”. In MPEG4 mode, you can also set the quality by typing in the value. The custom quality value must be in the range between 64 Kbps to 8192 Kbps.

Installation and Operation Guide

<b>Frame rate:</b>	Click on the drop-down list to choose the frame rates of “5FPS”, “10FPS”, “15FPS”, “24FPS” or “(25) 30FPS”.
<b>Format:</b>	Click to choose the “MJPEG” or the “MPEG4” mode.

**Fine Tune mode:**

<b>White Balance:</b>	Scroll to choose the mode from “Auto”, “Fluorescent (3200K)”, “Indoor (4200K)”, “Outdoor (6500K)”, ”Push Hold”.
<b>Flickerless:</b>	Mark the “Flickerless” “ON” or “OFF”. Click your choices to enable.
<b>Mirror:</b>	Mark the “Mirror” “ON” or “OFF”. Click your choices to enable.
<b>High Speed Shutter:</b>	Mark the “High Speed Shutter” “ON” or “OFF”. Click your choices to enable.
<b>BLC Mode:</b>	Scroll to choose from “Disable”, “Weighted” or “Fixed Gain”.
<b>Backlight:</b>	Select in the backlight level in the blank (0 to 255).
<b>Brightness:</b>	Select your desired quality of image brightness from a spectrum of 0 to 255.
<b>Contrast:</b>	Select the contrast level in the blank (0 to 255).
<b>Saturation:</b>	Select the saturation level in the blank (0 to 255).
<b>Sharpness:</b>	Select the sharpness level in the blank (0 to 255).

**MJPEG mode:**

<b>Viewer type:</b>	Click to choose the viewer type of the “ActiveX” or “AJAX” mode.
<b>MJPEG Deinterlace:</b>	Click to choose the MJPEG Deinterlace of the “ON” or “OFF” mode.
<b>Submit:</b>	Click to submit the new image setting to the IP camera.
<b>Default:</b>	Click this button to install the default settings in all the entries for image parameters on this page.

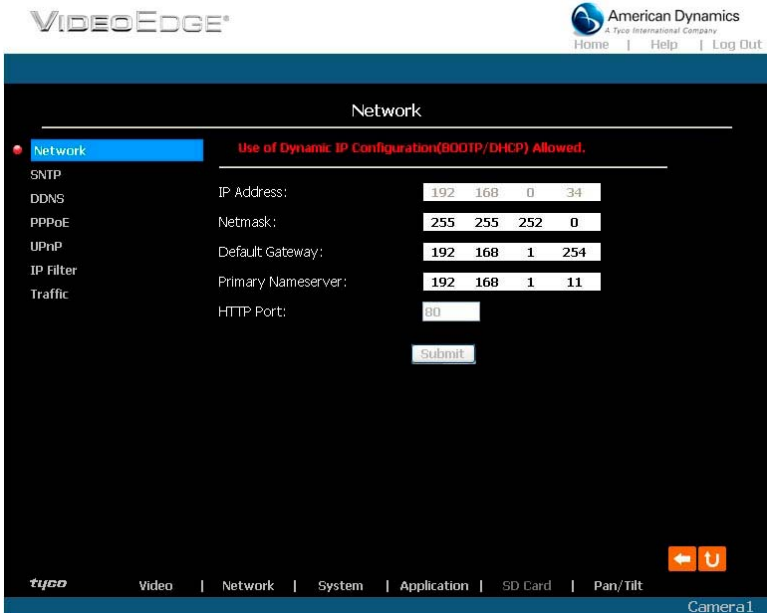


### 5.1.3 Change the Network Setting

Please follow the steps below to change the network setting through the network as necessary.

- Set the network options and IP address.

1. Click on the **Network** button in the home page to enter the Network page.



2. The accessible networks here are the "FTP" (for PAL only), "SMTP" (for PAL only), "SNTP", "DDNS", "PPPoE", "UPnP" and the "Traffic".
3. Enter the "IP Address", "Netmask", "Default gateway", "Primary nameserver", and "HTTP Port" as necessary.
4. Click on the **Submit** button to submit the new network setting.
5. Click on the **Home** button to return to the home page.

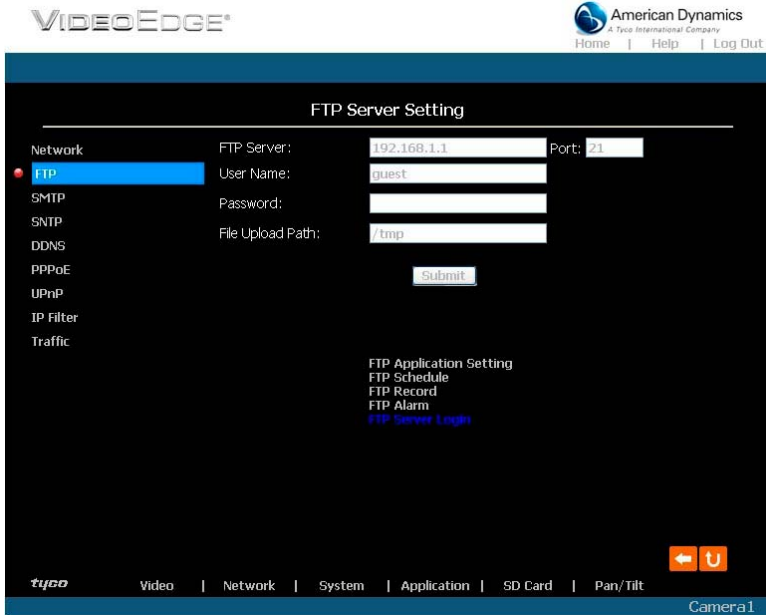
**Description of function keys:**

<b>IP Address:</b>	Enter the 4-byte IP Address in the appropriate blank space (the value in each box may be anywhere between 0 and 255). Every IP camera has to own an IP address to be identified on the network.
<b>Netmask:</b>	Enter the 4-byte Subnet Mask in the required blank spaces (usually any numbers between 0 and 255). It is used to identify the subnet where the IP camera is sited.
<b>Default Gateway:</b>	Enter the 4-byte Gateway in the relevant blank spaces (each unit value must be between 0 and 255).
<b>Primary Nameserver:</b>	Enter the 4-byte DNS Server Address in the blank spaces provided (each value unit must be between 0 and 255). The DNS Server is in charge of translating the Domain Name into the IP Address.
<b>HTTP Port:</b>	Indicates the specific HTTP Port Number. The default is 80.
<b>Submit:</b>	Click to submit the new network setting to the IP camera.

- Change the Network Setting — FTP (MJPEG mode only).

Please follow the steps below to change the FTP setting via the network as necessary, to upload recording data live. (\*FTP function is for PAL version only.)

1. Click on the **FTP** button on the upper left menu to enter the “FTP Server Setting” page.



2. Enter the “FTP Server” address, the “User Name”, and the “Password” of the FTP Server; and set the “File Upload Path” of the image files when necessary.
3. Click on the **Submit** button to submit the new FTP setting of the recording.
4. Click on the **Home** button to return to the home page.

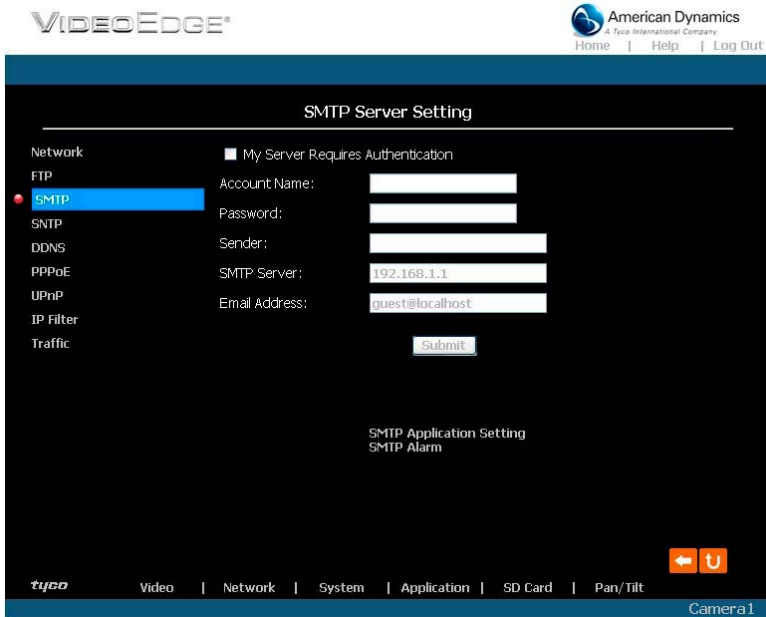
#### Description of function keys:

<b>FTP IP Address:</b>	Enter the FTP server DOMAIN NAME in the appropriate blank space.
<b>User Name:</b>	Enter the FTP login user name in the attached blank space (if the data is not provided, warning messages will show up).
<b>Password:</b>	Enter the FTP login password in the attached blank space (if the space is blank, warning messages will show up).
<b>File Upload Path:</b>	Enter the file upload path while setting the FTP.
<b>Submit:</b>	Click to submit the new FTP setting to the IP camera.

- [Change the Network Setting — SMTP \(MJPEG mode only\).](#)

Please follow the steps below to change the SMTP setting through the network as necessary. (\*SMTP function is for PAL version only.)

1. Click on the **SMTP** button on the upper left menu to enter the “SMTP Server Setting” page.



2. Click “My Server Requires Authentication” to checkmark the box and activate the function.
3. Enter the Sender name, DOMAIN NAME of the SMTP server, and set the recipient’s e-mail address as necessary.
4. Click on the **Submit** button to submit the new SMTP setting.
5. Click on the **Home** button to return to the home page.

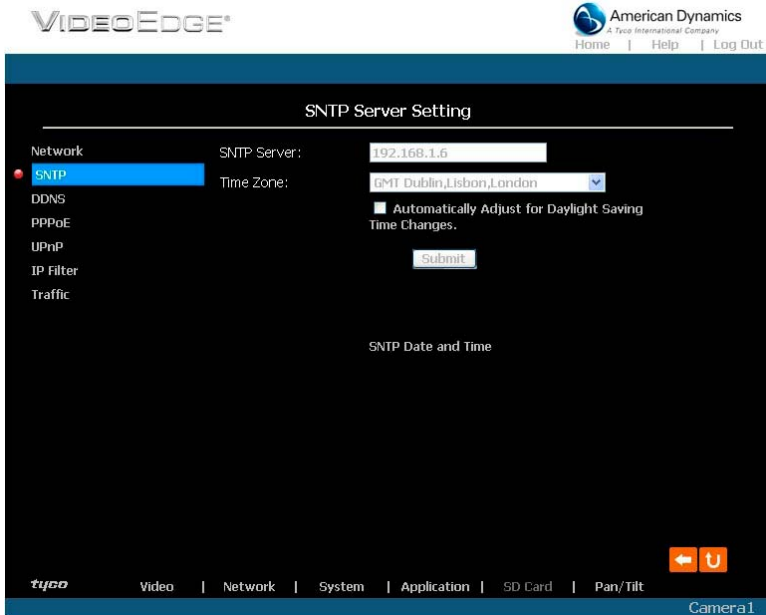
**Description of function keys:**

<b>Account Name &amp; Password:</b>	Enter the account name and password if you check marked the “My Server Requires Authentication” function.
<b>SMTP Server:</b>	Enter the SMTP server DOMAIN NAME in the given blank space.
<b>Email Address:</b>	The recipient’s e-mail address.
<b>Submit:</b>	Click to submit the new SMTP setting to the IP camera.

- Change the Network Setting — SNTP

Please follow the steps below to change the SNTP setting through the network as necessary.

1. Click on the **SNTP** button on the upper left menu to enter the “SNTP Server Setting” page.



2. Enter the IP Address of the SNTP server, and choose one of the time zones as and when necessary.
3. Click “Automatically Adjust for Daylight Saving Time Changes” to checkmark the box and activate the function.
4. Click on the **Submit** button to submit the new SNTP setting.
5. Click on the **Home** button to return to the home page.

**Description of function keys:**

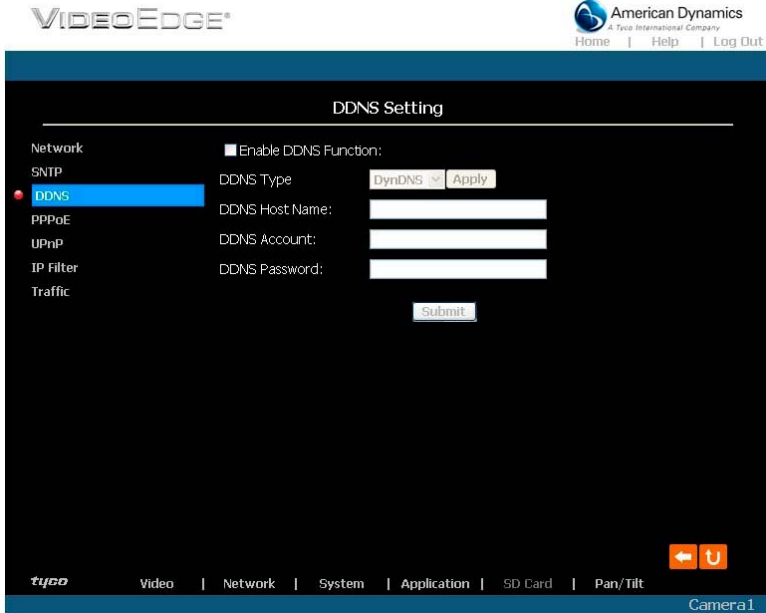
<b>SNTP Server:</b>	Enter the SNTP server DOMAIN NAME in the blank space provided.
<b>Time Zone:</b>	As we know, the globe is divided into various time zones. The user must enter his/her time zone. If this is not done, the time given by the unit may be incorrect.
<b>Submit:</b>	Click to submit the new SNTP setting to the IP camera.



- [Change the Network Setting — DDNS.](#)

The “Network” page has, on its upper left, the “DDNS” icon. Please follow the steps below to change the DDNS setting through the network as necessary.

1. Click on the **DDNS** button on the upper left menu to enter the “DDNS Setting” page.



2. Click “Enable DDNS Function” to checkmark the box and activate the function.
3. Click “DDNS Type” to open the list of two DDNS modes to choose from: “DynDNS” and “hn”. Click on the “Apply” button and connect their website automatically and visit it. Enter your dynamic IP Address and Email Address. If they are accepted by the website, you will get an Email containing your DDNS Account and DDNS Password in your Email box.
4. Enter the “DDNS Host Name”, the “DDNS Account” and the “DDNS Password”.
5. Click on the **Submit** button to submit the new setting.
6. Click on the **Home** button to return to the home page.

**NOTE: Please refer to section 5.1.8 (PPPoE & DDNS) for more details.**

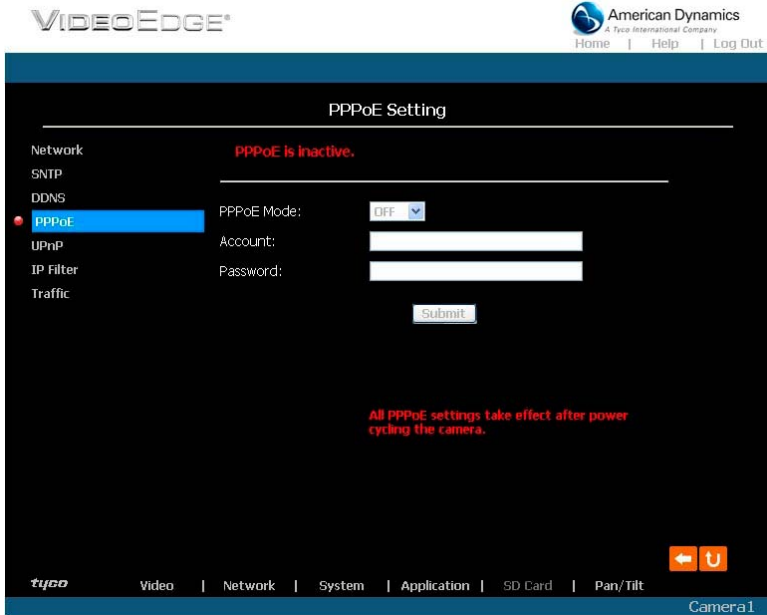
**Description of function keys:**

<b>Enable DDNS Function:</b>	Checkmark to activate the function.
<b>DDNS Type:</b>	Click to open the list of two DDNS modes to choose from: "DynDNS" and "hn". Click on the "Apply" button and connect this website automatically and enter it. Enter your dynamic IP Address and Email Address. If they are accepted by the website, you will get an Email containing your DDNS Account and DDNS Password in your Email box.
<b>DDNS Host Name:</b>	Enter your host name in the attached space.
<b>DDNS Account:</b>	Enter it in the given space.
<b>DDNS Password:</b>	Enter it in the required space.
<b>Submit:</b>	Click to set.

- [Change the Network Setting — PPPoE.](#)

The “Network” page has, on its upper left, the “PPPoE” icon. Please follow the steps below to change the PPPoE setting through the network as necessary.

1. Click on the **PPPoE** button on the upper left menu to enter the “PPPoE Setting” page.



2. Click on the “PPPoE Mode” to activate the function.
3. Enter the PPPoE “Account” and the PPPoE “Password”.
4. Click on the **Submit** button to submit the new setting.
5. Click on the **Home** button to return to the home page.

**NOTE: Please refer to section 5.1.8 (PPPoE & DDNS) for more details.**

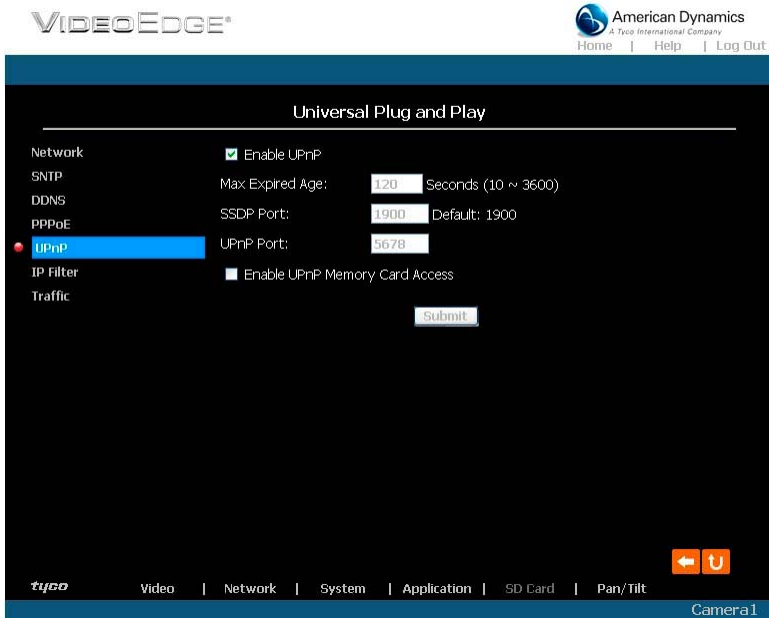
**Description of function keys:**

<b>PPPoE mode:</b>	Click your choices to enable the PPPoE function.
<b>Account:</b>	Enter it in the given space.
<b>Password:</b>	Enter it in the required space.
<b>Submit:</b>	Click to set.

- Change the Network Setting —UPnP

The “Network” page has, on its upper left, the “UPnP” icon. Please follow the steps below to change the UPnP setting through the network as necessary.

1. Click on the **UPnP** button on the upper left menu to enter the “Universal Plug and Play” page.



2. Click “Enable UPnP” to checkmark the box and activate the function.
3. Enter the UPnP “Max Expired Age”, the “SSDP Port” and the “UPnP Port”.
4. Click “Enable UPnP Memory Card Access” to checkmark the box and activate the function.
5. Click on the **Submit** button to submit the new setting.
6. Click on the **Home** button to return to the home page.

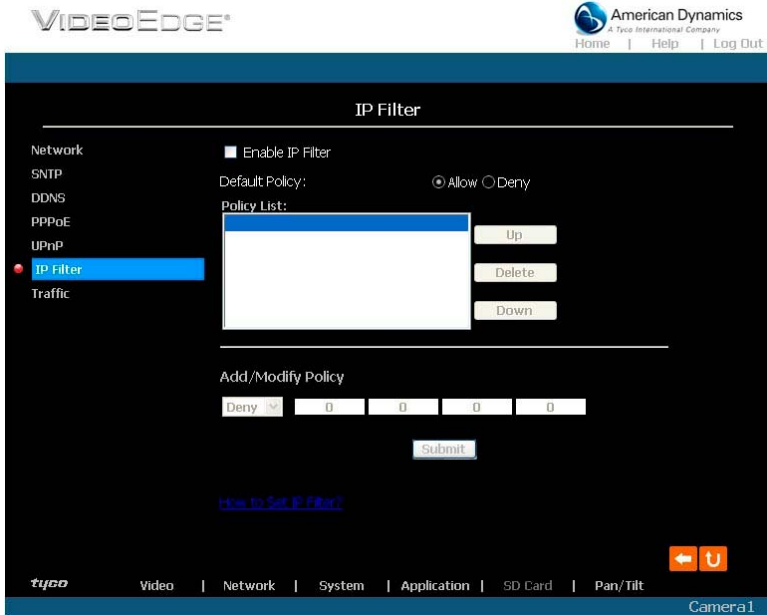
**Description of function keys:**

<b>Max Expired Age:</b>	Enter it in the given space from a range of 10–3600.
<b>SSDP Port:</b>	SSDP stands for Simple Service Discovery Protocol. SSDP searches for upstream Internet gateways using UDP port 1900.
<b>UPnP Port:</b>	Enter the UPnP Port in the attached space.
<b>Submit:</b>	Click to set.

- [Change the Network Setting — IP Filter](#)

The “Network” page has, on its upper left, the “IP Filter” icon. Please follow the steps below to change the IP Filter setting through the network as necessary.

1. Click on the **IP Filter** button on the upper left menu to enter the “Network Setting” page.



2. Click “Enable IP Filter” to checkmark the box and activate the function.
3. Select the Default policy.
4. Set the Allow/Deny IP Filter policy and enter its IP address.

After setting the policies, they will be shown on the **Policy List**. The user can use the “**Up**” or “**Down**” to select a policy and use the “**Delete**” button to erase it.

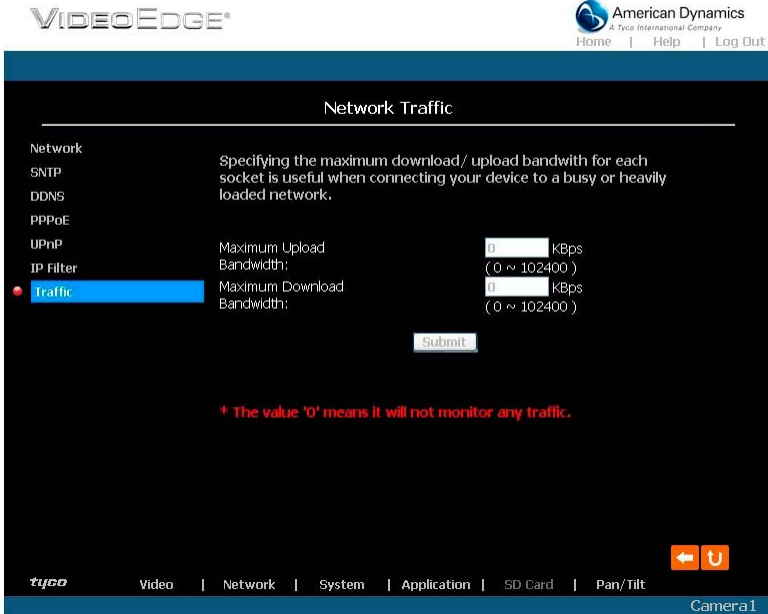
5. Click on the **Submit** button to submit the new setting.
6. Click on the **Home** button to return to the home page.

**NOTE: The settings of the IP Filter must be correct or you may not be able to operate the device regularly. If the IP Filter has been incorrectly setup and you can't access the device normally, please press the “Default” button on the rear panel of the camera to return to the factory default setting.**

- Change the Network Setting —Network Traffic.

The “Network” page has, on its upper left, the “Traffic” icon. Please follow the steps below to change the UPnP setting through the network as necessary.

1. Click on the **Traffic** button on the upper left menu to enter the “Network Traffic” page.



2. Enter the “Maximum Upload Bandwidth” and the “Maximum Download Bandwidth”.
3. Click on the **Submit** button to submit the new setting.
4. Click on the **Home** button to return to the home page.

**Description of function keys:**

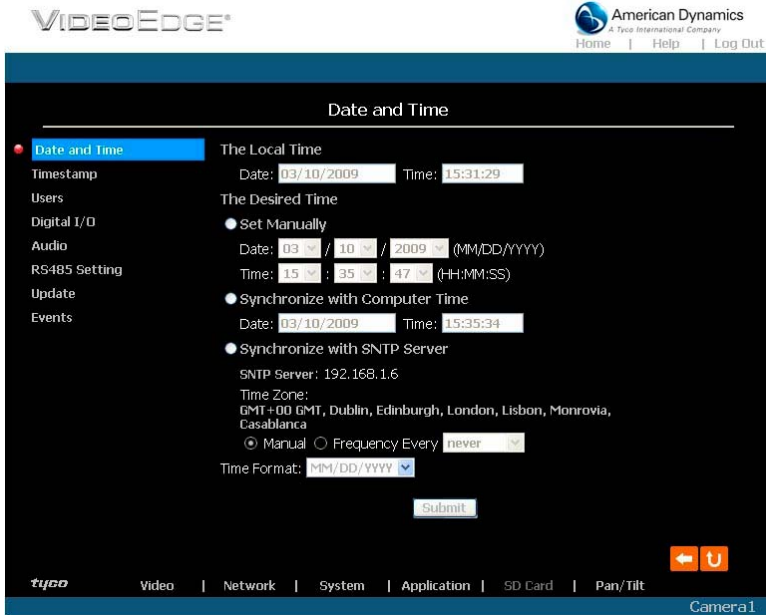
<b>Maximum Upload Bandwidth:</b>	Enter it in the given space from a range of 0 to 102400.
<b>Maximum Download Bandwidth:</b>	Enter it in the required space from a range of 0 to 102400.
<b>Submit:</b>	Click to set.

### 5.1.4 Change the System Setting

Please follow the steps below to change the date and time of the system setting through the network as necessary.

- Set the Date and Time of the system

1. Click on the **System** button in the home page to enter the “Date And Time” page (default).



2. Choose one of the three modes shown on the page to set the Date and Time of the system. The three modes are “Set Manually”, “Synchronize With Computer Time”, and “Synchronize With SNTP Server”.
3. Click on the **Submit** button to submit the new Date and Time settings.
4. Click on the **Home** button to return to the home page.

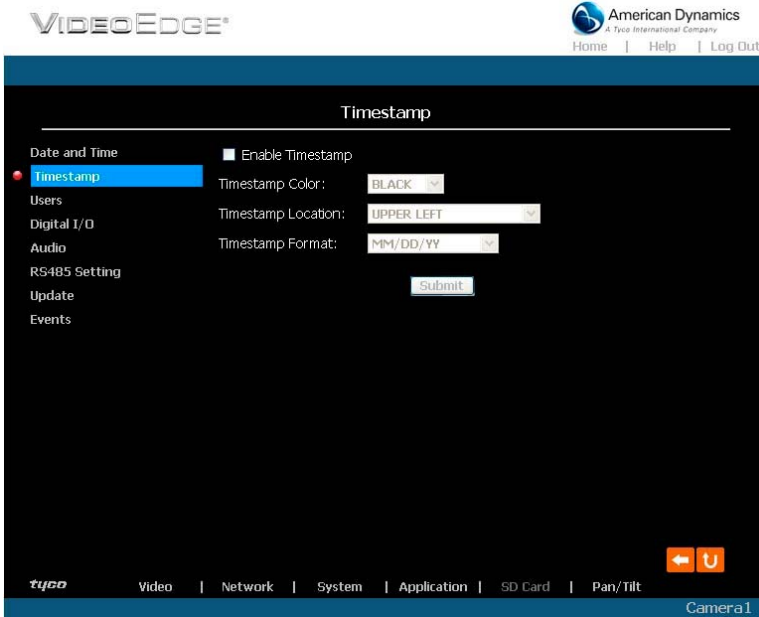
**Description of function keys:**

<b>The Local Time:</b>	Shows the current date and time of the IP camera.
<b>Set Manually:</b>	Manually sets the date and time of the IP camera.
<b>Synchronize With Computer Time:</b>	Synchronizes with the linking computer.
<b>Synchronize With SNTP Server:</b>	Synchronizes with the SNTP server. In this mode, two choices of adjusting are provided: doing it manually or setting the frequency to enable the system to do it automatically.
<b>Submit:</b>	Click to submit the new setting to the IP camera.

- [Change the System Setting — Timestamp.](#)

Please follow the steps below to change/add the timestamp through the network as necessary.

1. Click on the **Timestamp** button on the left side of the “System - Date and Time” page to enter the “System - Timestamp” page.



2. Click **“Enable Timestamp”** to checkmark the box and activate the function
3. Add or modify any timestamp’s data as necessary.
4. Enter the "Timestamp Color" you have chosen.
5. Enter the "Timestamp Location" you have chosen.
6. Enter the "Timestamp Format" you have chosen.
7. Click on the **Submit** button to submit the new user’s setting.
8. Click on the **Home** button to return to the home page.

**Description of function keys:**

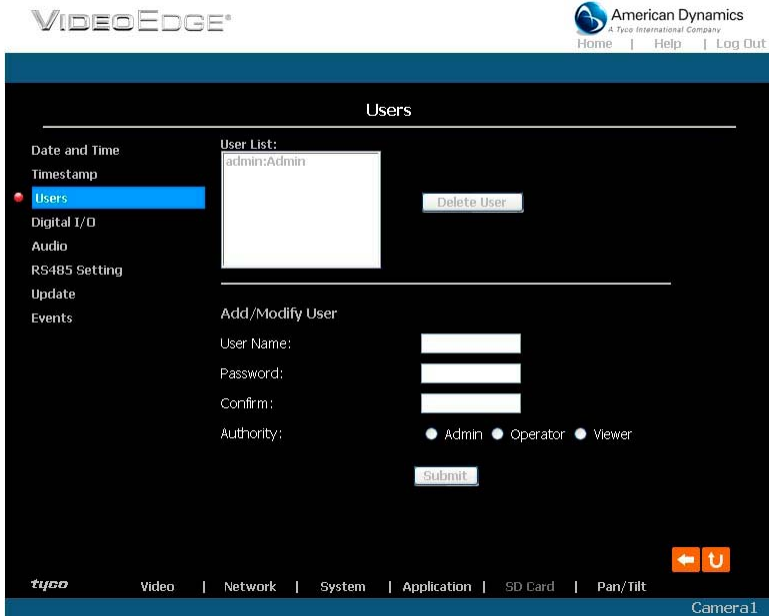
<b>Enable Timestamp:</b>	Checkmark to activate the function.
<b>Timestamp Color:</b>	Click to open the list of eight color modes to choose from: “BLACK”, “WHITE”, “RED”, “ORANGE”, “YELLOW”, “GREEN”, “BLUE”, and “PURPLE”.
<b>Timestamp Location:</b>	Click to open the list of four location modes to choose from: “UPPER LEFT”, “UPPER RIGHT”, “BOTTOM LEFT”, and “BOTTOM RIGHT”.
<b>Timestamp Format:</b>	Click to open the list of six format modes to choose from: “YY/MM/DD”, “MM/DD/YY”, “DD/MM/YY”, “YY/MM/DD TITLE”, “MM/DD/YY TITLE”, and “DD/MM/YY TITLE”.
<b>Submit:</b>	Click to set.



- Change the System Setting — Users.

Please follow the steps below to change/add the users' authority through the network as necessary.

1. Click on the **Users** button on the left side of the "Date and Time" page to enter the "Users" page.



2. Add, modify or delete any user's data as necessary.
3. Click on the **Submit** button to submit the new user's settings.
4. Click on the **Home** button to return to the home page.

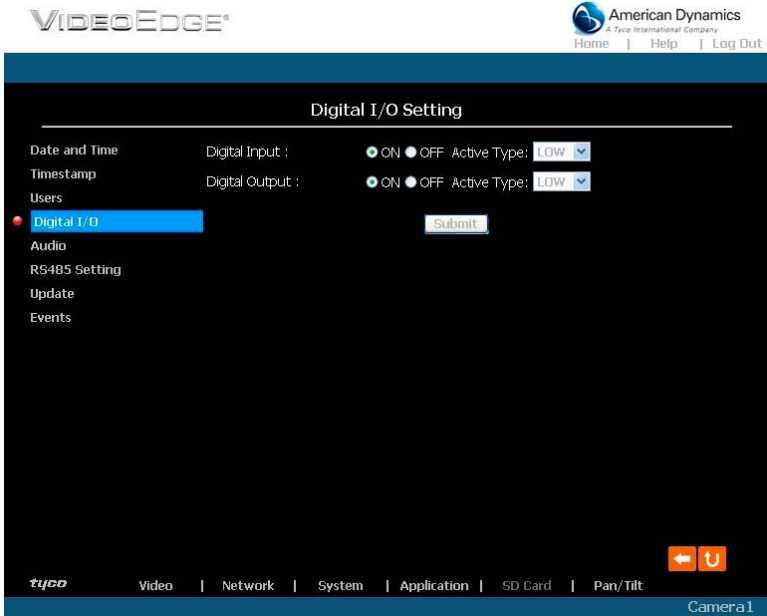
**Description of function keys:**

<b>User List:</b>	The list shows the registered user(s) and the corresponding authority.
<b>Delete:</b>	Deletes a selected user.
<b>Name:</b>	Enter the user's name, which will be added or modified.
<b>Password:</b>	Enter the new password of the user's name above.
<b>Confirm:</b>	Enter the password again for verification.
<b>Authority:</b>	Choose an authority option of the user's name from: Admin, Operator, and Viewer.
<b>Submit:</b>	Click to submit the new setting to the IP camera.

- Change the System Setting — Digital I/O.

Please follow the steps below to change the Digital I/O through the network as necessary.

1. Click on the **Digital I/O** button on the left side of the “Date and Time” page to enter the “Digital I/O Setting” page.



2. Mark the “Digital Input” “ON” or “OFF” and the “Digital Output” “ON” or “OFF”. Click your choices to enable.
3. Click on the **Submit** button to submit the new user’s settings.
4. Click on the **Home** button to return to the home page.

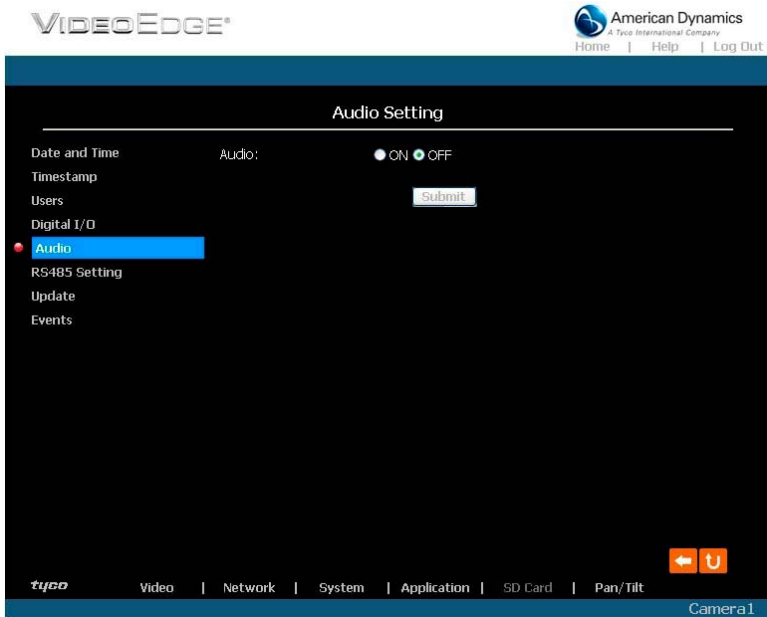
**Description of function keys:**

<b>Digital Input:</b>	Select “ON” or “OFF” to use the GPIO connector or shut it down.
<b>Digital Output:</b>	Select “ON” or “OFF” to use the GPIO connector or deactivate it.

- Change the System Setting — Audio.

Please follow the steps below to change the Audio setting through the network as necessary.

1. Click on the **Audio** button on the left side of the “Date and Time” page to enter the “Audio Setting” page.



2. Mark the “Audio” “ON” or “OFF”.
3. Click on the **Submit** button to submit the new user’s settings.
4. Click on the **Home** button to return to the home page.

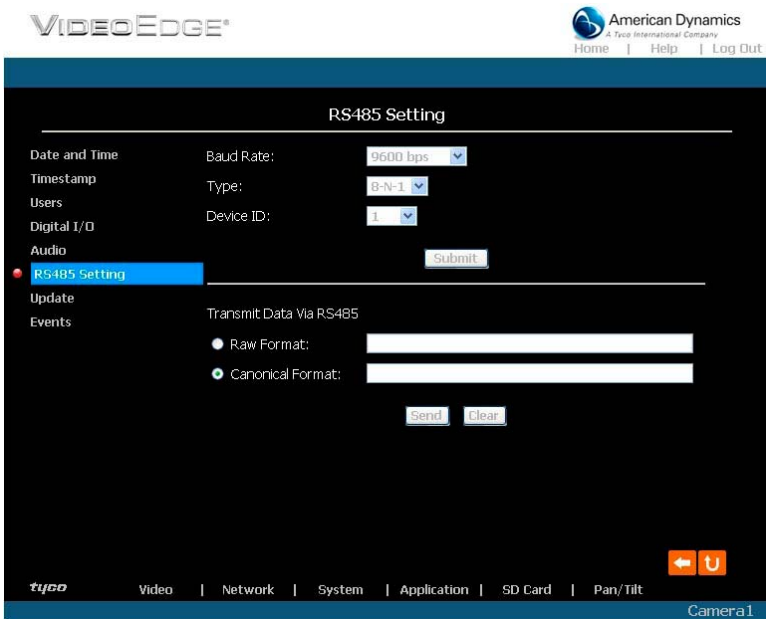
**NOTE: This setting is for turning the audio of the Camera on/off automatically. The Live audio service is only provided in the MPEG4 mode via the Web browser.**

**Description of function keys:**

<b>Audio:</b>	Select “ON” or “OFF” to activate or deactivate the function.
---------------	--

- Change the System Setting — RS485 Setting.

Click on the **RS485 Setting** button on the left side of the “Date and Time” page to enter the “RS485 Setting” page.



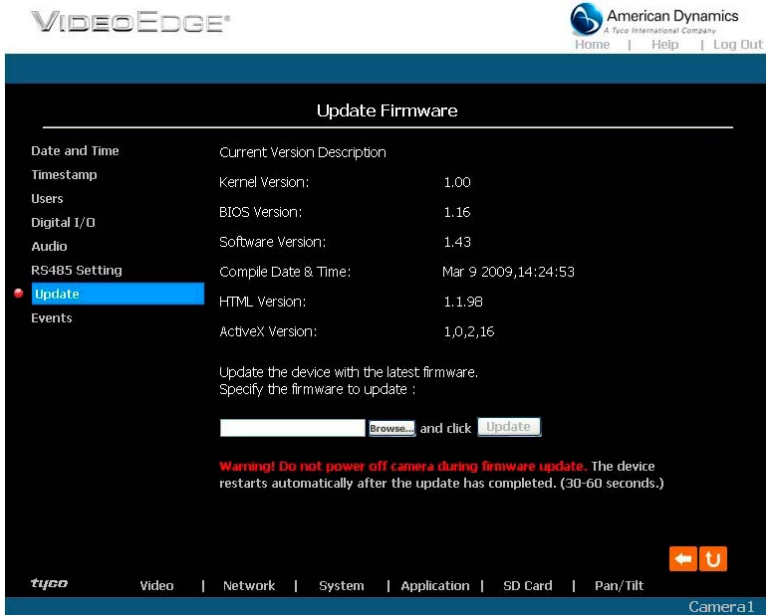
**Description of function keys:**

<b>Baud rate:</b>	Eight different speeds can be used: 2400 baud per second, 4800 baud, 9600 baud, 19200 baud, 28800 baud, 38400 baud, 57600 baud and 115200 baud.
<b>Type:</b>	Choose one of the types.
<b>Device ID:</b>	You have the option of using an ID code (any number between 1 and 255).
<b>Raw format:</b>	Set to transmit the ASCII codes.
<b>Canonical format:</b>	Set to transmit the character string.

- Change the System Setting — Update Firmware.

Please follow the steps below to update the firmware through the network as necessary.

1. Click on the **Update Firmware** button on the left side of the “Date and Time” page to enter the “Update Firmware” page.



2. Click on the “Browse...” button to select the UPDATE.BIN file which was copied into your computer.
3. Click on the “Update” button.

**NOTE: DO NOT power off the IP camera during firmware update.**

**NOTE: Don’t interrupt the process while the unit is updating itself.**

**NOTE: Please make sure that the UPDATE.BIN file is appropriate to the model of the unit.**

**Updating with the wrong UPDATE.BIN file may cause physical damage to the device.**

**NOTE:** The Temporary Internet Files (or cache) folder contains Web page content that is stored on your hard disk for quick viewing. We suggest deleting the Temporary Internet Files immediately after updating the firmware. To delete the files in the Temporary Internet Files folder, follow these steps:

1. Quit Internet Explorer and quit any instances of Windows Explorer.
2. Click **Start**, click **Control Panel**, and then double-click **Internet Options**.
3. On the **General** tab, click **Delete Files** under **Temporary Internet Files**.
4. Select the **Delete all offline content** check box in the **Delete Files** dialog box, and then click **OK**.
5. Click **OK**.

- [View the Event Logs.](#)

Please follow the steps below to view events through the network as necessary.

1. Click on the **Events** button on the upper left above to enter the “Event Log” page.



2. Choose one of the three buttons shown on the page to view an event when necessary. The three buttons are titled “First Page”, “Previous 20”, and “Next 20”.

**Description of function keys:**

<b>First Page:</b>	Displays the first page.
<b>Previous 20:</b>	Displays the previous 20 pages.
<b>Next 20:</b>	Displays the next 20 pages.

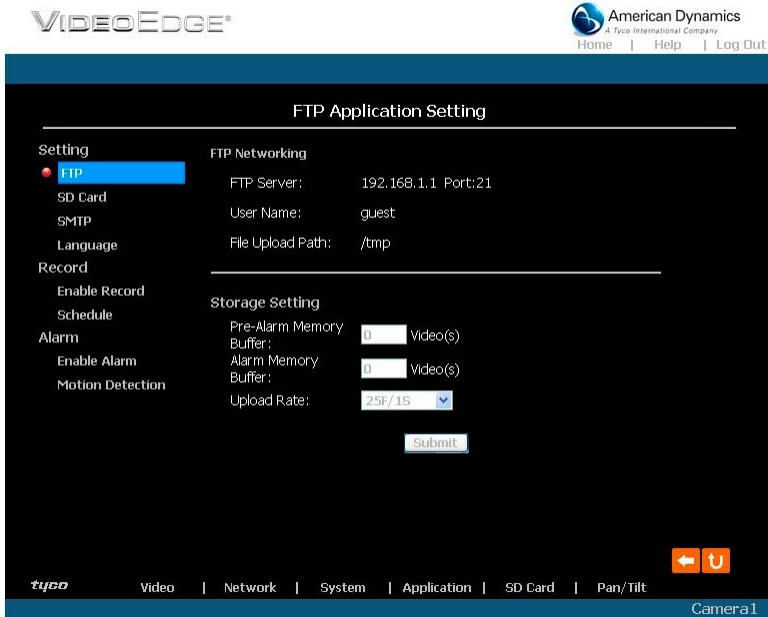
### 5.1.5 Change the Application Setting

Please follow the steps below to change the application setting through the network as necessary.

- Change the Application Setting — FTP Application Setting (MJPEG mode only).

Please follow the steps below to change the FTP setting via the network as necessary to upload recording data live. (\*FTP function is for PAL version only.)

1. Click on the **Application** button on the home page to enter the “FTP Application Setting” page (default).



2. Enter the required number of images you wish to set in "Pre - Alarm Memory Buffer" and "Alarm Memory Buffer respectively" in their corresponding blank spaces within the Storage Settings.
3. Enter the "Upload Rate" you have chosen.
4. Click "Submit" after each of the above entries for their settings.
5. Click on the “Home” button to return to the home page.

#### Description of function keys:

<b>Pre – Alarm Memory Buffer:</b>	Fixes the desired number of images to prelude an alarm.
<b>Alarm Memory Buffer:</b>	Determines the selected length of the image buffer after an alarm.
<b>Upload Rates:</b>	Sets the upload speed rate.

- Change the Application Setting — SD Card Application Setting.

Please follow the steps below to change the SD CARD setting via the network as necessary, to upload recording data live.

1. Click on the **SD card** button on the top left to enter the "SD Card Application Setting" page.



**SD Card setting page of MJPEG mode**

**SD Card setting page of MPEG4 mode**

You can choose which SD card storage format to use, MJPEG (MJPEG mode only) or AVI.

2. Click on your selected format and "Submit" to set it.
3. Enter "Max MJPEG Numbers" entry if it's MJPEG format.
4. Enter its recording rate and duration in seconds, and click "Submit" for their setting if AVI is your choice.

**Description of function keys:**

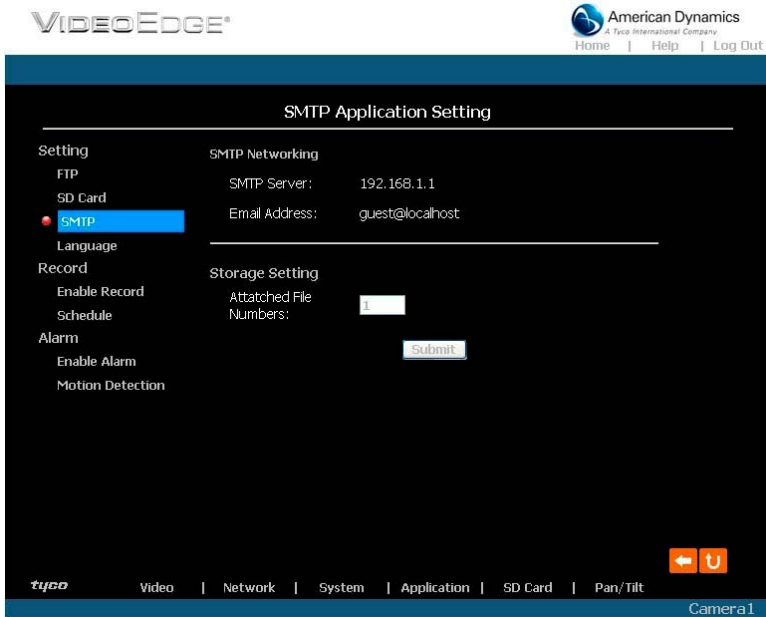
<b>MJPEG Format:</b>	One image per file.
<b>Max MJPEG Numbers:</b>	Sets the number of file sequences you can save per second.
<b>AVI Format audio setting:</b>	Unlike a single image file, this option offers a selected section of a video record.
<b>Recording Rate:</b>	Sets your chosen frame rate of frames per second.
<b>AVI Duration:</b>	Predetermines the length of each video file in terms of seconds.
<b>Enable SD Card Rewrite:</b>	Tick to activate the SD card rewrite function.
<b>SD Card Capacity:</b>	The free capacity of the SD card.
<b>SD Card Usage:</b>	The percentage of the recorded file on the SD card.
<b>SD Format</b>	Click and press the Yes button to format the SD card.



- Change the Application Setting —SMTP Application Setting (MJPEG mode only).

Please follow the steps below to change the SMTP setting via the network as necessary. (\*SMTP function is for PAL version only.)

1. Click on the **SMTP** button on the left side to enter the “SMTP Application Setting” page.



2. Enter the attached file number as and when necessary. The maximum number which can be used is 8.
3. Click on the **Submit** button to submit the new SMTP setting of the recording.
4. Click on the **Home** button to return to the home page.

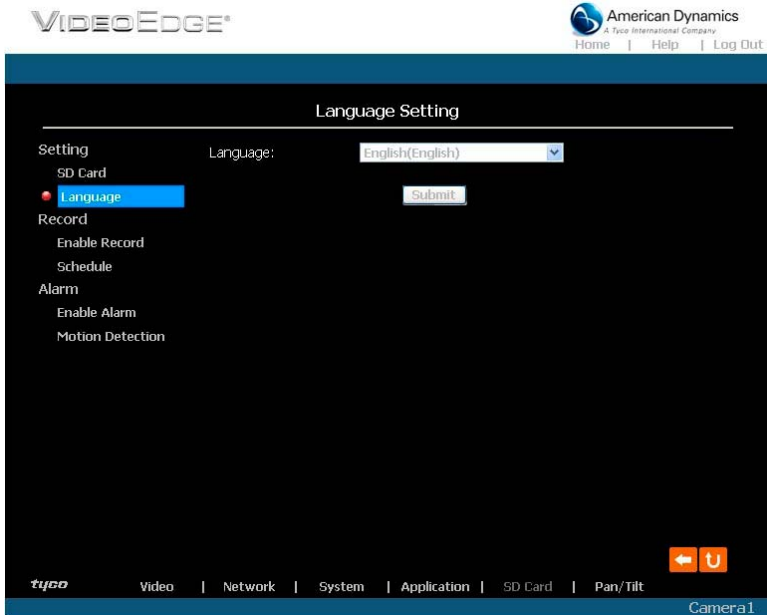
**Description of function keys:**

<b>File numbers:</b>	Sets the quantity of images per Email.
----------------------	--

- Change the Application Setting —Language Setting.

Please follow the steps below to change the Language setting via the network as necessary.

1. Click on the **Language** button on the left side to enter the "Language Setting" page.



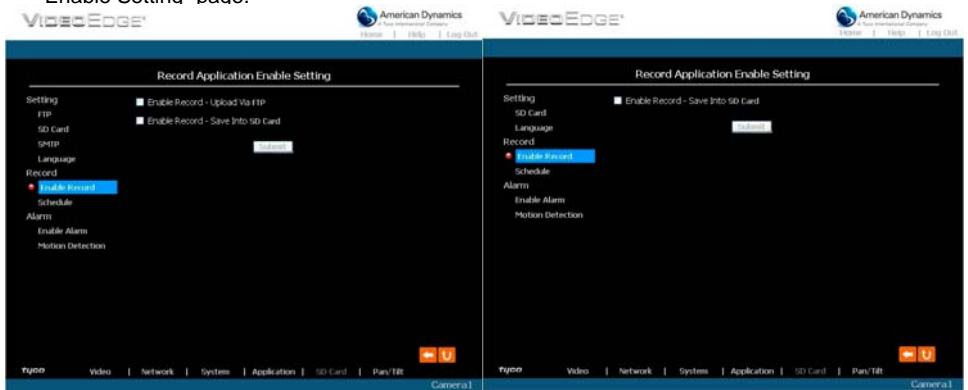
You have an option as to which language to use. The default is "English"

2. Choose your selected language and click "Submit" to set it.

- [Change the Application Setting —Record Application Enable Setting.](#)

Please follow the steps below to change the setting via the network as necessary.

1. Click on the **Enable Record** button on the left side of the record to enter the “Record Application Enable Setting” page.



**Record setting page of MJPEG mode**

**Record setting page of MPEG4 mode**

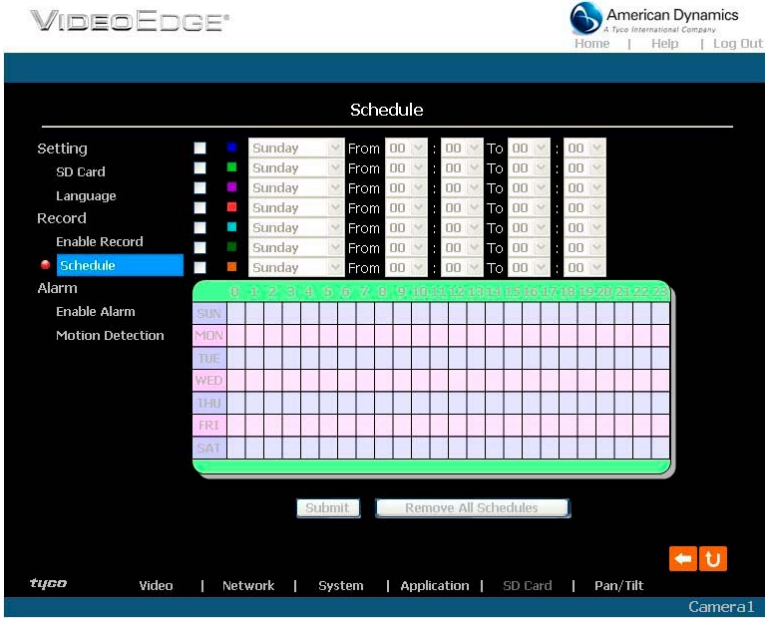
2. Click “Enable Record – UPLOAD Via FTP” to checkmark the box and activate the function (\*FTP function is for PAL version only).
3. Click “Enable Record – Save Into SD card” to checkmark the box and activate the function.
4. Click on the **Submit** button to submit the new setting of the recording.
5. Click on the **Home** button to return to the home page.

**Description of function keys:**

<b>Enable Record – Upload Via FTP:</b>	Activates or deactivates the recording to the FTP server.
<b>Enable Record – Save Into SD Card:</b>	Activates or deactivates the recording to the SD card.

- Change the Application Setting —Record - Schedule.

1. Click on the **Application** button on the home page to enter the “Record - Schedule” page.



2. Check/uncheck any/all of the first seven boxes set vertically in the upper half of the “Schedule” page to enable/disable the programmed recording function, and vary the setting of the targeted item while it is enabled.
3. Click on the **Submit** button to submit the new schedule setting.
4. Click on the **Remove All Schedules** button to clear out all the data of the schedule setting.

**Description of function keys:**

<b>Schedule:</b>	Check / uncheck the first seven boxes in a vertical row on the left to enable/disable the programmed scheduled recording function as necessary. Vary any of the schedules of the recording setting as necessary (please refer to the above description).
<b>Chart:</b>	Schedule list.
<b>Submit:</b>	Click to submit the new setting to the IP camera.
<b>Remove All Schedules:</b>	Click to clear out all the data of the schedule setting.

Installation and Operation Guide

● Change the Application Setting — Alarm Application Enable Setting.

Please follow the steps below to change the setting via the network as necessary.

1. Click on the **Enable Alarm** button on the left side of the record to enter the “Alarm Application Enable Setting” page.



**MJPEG mode**

**MPEG4 mode**

2. Click “Enable Alarm – Trigger an Alarm When Ethernet Is Lost” to checkmark the box and activate the function.
3. Click “Enable Alarm – Upload Via FTP” to checkmark the box and activate the function (\*FTP function is for PAL version only).
4. Click “Enable Alarm – Save Into SD card” to checkmark the box and activate the function.
5. Click “Enable Alarm – Upload Via SMTP” to checkmark the box and activate the function (\*SMTP function is for PAL version only).
6. Enter the "Alarm Duration" you have chosen.
7. Click on the **Submit** button to submit the new setting of the recording.
8. Click on the **Home** button to return to the home page.

**Description of function keys:**

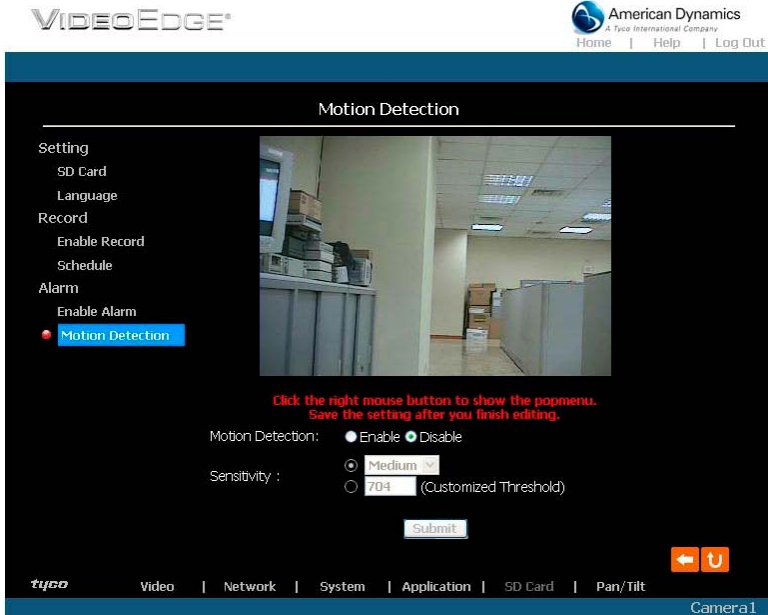
<b>Enable ALARM – Trigger an Alarm When Ethernet Is Lost:</b>	Activates or deactivates the alarm triggering while the Ethernet lost.
<b>Enable Alarm – Upload Via FTP:</b>	Activates or deactivates the alarm recording upload to the FTP.
<b>Enable Alarm – Save Into SD card:</b>	Activates or deactivates the alarm recording to be saved to the SD card.
<b>Enable Alarm – Upload Via SMTP:</b>	Activates or deactivates the alarm recording upload to the SMTP.
<b>Alarm Duration:</b>	Predetermines the length of the alarm.

- Change the Application Setting — Alarm - Motion Detection.

Please follow the steps below to enable changes in the motion detection function of the alarm through the network as necessary.

Set the motion detection:

1. Click on the **Motion Detection** button on the left side of the Alarm to enter the “Alarm – Motion Detection” page.



2. Click and drag the mouse across a targeted zone to draw a red rectangle on the image (coordinates provided below).

**NOTE: You can set more than one targeted zone depending on your requirement.**

3. Enables / disables the motion detection function.
4. Set up the signal level.
5. Click on the **Submit** button to submit the new setting of the recording.
6. Click on the **Home** button to return to the home page.

**Description of function keys:**

<b>The targeted zone:</b>	Click and drag the mouse across the targeted zone to draw a red rectangle on the image.
<b>Detection Range:</b>	The red rectangle’s coordinates.
<b>Save:</b>	Click to save the motion detection range.
<b>Motion Detection:</b>	This option enables / disables the motion detection function.
<b>Sensitivity Level:</b>	You can select any one of the given options for the setup signal level or just type in the value of Customized Threshold.

### 5.1.6 Change the SD card Setting

Please follow the steps below to change the SD card setting through the network as necessary.

- Change the SD card Setting — FILELIST of MEMORY CARD.

Please follow the steps below to change the setting via the network as necessary.

1. Click on the “SD card” button at the bottom of the home page to enter the “Filelist of Memory Card” screen. The page comes in two modes, the JPEG and the AVI (please refer to the “SD card Application Setting Page”).



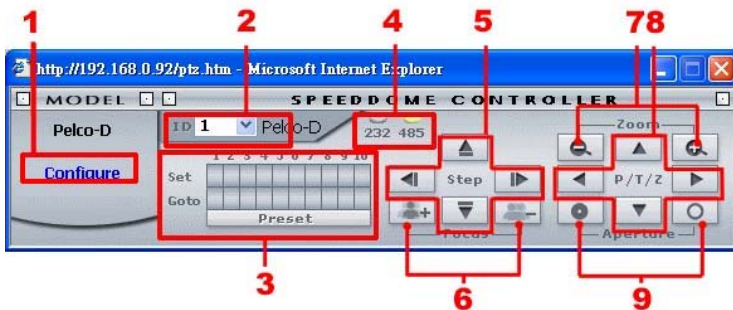
2. Click on the desired file to display the images.
3. Each file can be deleted by clicking the “Delete” hyperlink.

**NOTE:** Right click the hyperlink of the file in the "Filelist of Memory Card" page and then click "Save" to save the file.

**CAUTION:** If you wish to save the SD CARD files from a camera to your computer, enter the JPEG column in the "Filelist of Memory Card" page and enter the relevant files in the column. When you click right, the images concerned will appear. Move your cursor within the image area and right click the mouse. A table of item entries displays. Click "Save" and select the file path in which to save your files.

### 5.1.7 Change the Pan/Tilt setting

1. Click on the **Pan/Tilt** button on the home page to open the Speed Dome Controller.



2. Click "Configure" to enter to the RS485 setting page (please refer to Change the System Setting — RS485 Setting).
3. Select a Speed Dome device ID from the drop-down list on the Speed Dome Controller. The Controller will display the corresponding ID.  
Each of the ten buttons under 'Set' is connected with a specific position and angle of either panning or tilting of the camera. Click each button to activate its particular position and angle. Press the button under 'Preset' to turn the camera angle by angle in the set positions. Each of the ten buttons designated 'Go to' can be clicked to view the particular corresponding angle of the position to which it is set.
4. Select the connecting port. The RS-485 communication ports function as connectors when two or more units are serially connected to an external control device.
5. Upon the buttons being clicked, a camera will move one short step only in any of the four designated directions.
6. Click on the buttons to control the Focus setting on the Speed Dome Controller. Click "+" button to focus far and click the "-" button to focus near.
7. Click on the buttons to control the Zoom setting on the Speed Dome Controller. Click "+" button to zoom in and click the "-" button to zoom out.
8. Upon the buttons being clicked, a camera will turn all the way, without stopping, in one of the four designated directions.
9. Click on the buttons to control the Aperture setting on the Speed Dome Controller.



## 5.1.8 PPPoE & DDNS

### Using the PPPoE

1. Install the XDSL software (obtained from your ISP dealer) in your PC.
2. Search for your IP camera's IP address: you can connect the IP camera and the Video monitor. The monitor screen will show the IP address on its right side.
3. Change the switch on the IP camera's side panel to position # 4.
4. Installing an IP address in your PC or notebook.

Desktop → Move the cursor to the Network neighborhood and right click the mouse → Choose the properties → Choose your local connection → Choose the properties and select the configuration → Select the TCP / IP → Choose the properties → Enter the IP address in a four-part format, for example "192. 168. 1.101" (the first three parts must be identical to the above numbers, only the last part can be changed to your own number, which must never exceed 255) → Click on the mask and the mask input, namely "255. 255. 255. 0" (a fixed formula) → Click "OK" → Click "OK".

5. Desktop → Choose IE browser → Enter the IP camera IP address in the URL (check step # 2 above) → Enter → IP camera images will appear.

### PPPoE Settings

1. Enter the IP camera home page → Choose the network → Enter "User Name: admin" and "Password: 9999" → Click "OK".
2. Choose PPPoE → PPPoE mode: Select "ON" → Enter "Account" → Enter "Password" → Submit → Unplug the power connection.
3. Plug in the IP camera and it will receive an IP address from the ISP dealer (this IP address is dynamic --- every time you unplug and plug in again you'll get a new IP address).



### **Test: Go to the Internet.**

1. Set your PC to enter the Internet.
2. Desktop → IE browser → Enter the IP camera IP address (the same address as in the PPPoE settings and step 3 above) → You can see the IP camera images.

### **DDNS settings**

1. Check your IP camera's IP address (monitor ) → open your IE browser → Use the address to connect to the IP camera or view the images → Choose the network → Enter "User name : admin" and "Password : 9999" → Click "OK" .
2. Choose the "DDNS" → Click "Enable DDNS" → Enter the "DDNS host name", for example "abc123. homeip.net" → Enter "DDNS Account", for example "abc123" → Enter the "DNS Password", for example "7777" → Submit → The settings are now complete → Close the IE browser.
3. Open the IE browser again → Enter the Website address you just applied for, such as "abc123.homeip.net" → You can look at your IP camera images right away. The procedure is complete.

**NOTE: These settings are only for your ADSL Dynamic IP configuration. If your configuration is fixed (true IP), you don't need to proceed with the PPPoE and DDNS settings. The DDNS is just for your convenience.**

### 5.1.9 The Bandwidth Calculator of the IP camera

You can use the calculator to obtain the rough bandwidth throughput for reference.

Enter “[http://\\*\\*\\*.\\*\\*\\*.\\*\\*\\*.\\*\\*\\*/calculator.html](http://***.***.***.***/calculator.html)” into the URL block and press the “Enter” button to enter the calculating page. (The \*\*\*.\*\*\*.\*\*\*.\*\*\* is the URL address of the IP camera accordingly.)

#### Network Camera Bandwidth Calculator

NTSC	Frame rate	Resolution	Quality	Motion scene	Bandwidth
MJPEG		Full D1	Highest	100%	15120 kbps
MPEG-4	30 fps	Full D1	Highest	100%	3072 kbps
H.264	30 fps	Full D1	Highest	100%	2048 kbps

Version 1.0.0.0

\* The 'kbps' mentioned above means kilo bit per second and the unit of kilo is 1,024.

\* The result shows the maximum bandwidth that the device can transmit and it is for reference only. This value is subject to be changed by network or PC performance.

Please select the video format and set the desired resolution, quality and the percentage of the motion scene and the result will show on the bandwidth column immediately.

**NOTE: The selection of motion scene provides the rough percentage of motion within the scene, please make the setting in regards to the situation which you want to know.**

## 6. ADVANCED OPERATION

### Question 1:

**How can I view the live images of the IP camera via Microsoft Internet Explorer on the Desktop PCs, or the laptop computers, in a situation where there are no monitors or television?**

◇ To get the IP address of the IP camera without a monitor, use one of the following two methods to get the IP address: UPnP and IP function.

UPnP: Please refer to **APPENDIX 1**.

IP function: Please refer to **APPENDIX 2**.

### Question 2:

**How do I set up the motion detection area and its sensitivity?**

#### ◇ Set up the motion detection

1. Click the **Application** button in the home page.
2. Click the **Motion detection** button on the left side of the page to enter the “Alarm – Motion Detection” page.
3. Click and drag the cursor across a targeted zone to draw a red rectangle on the image. You can also draw the other targeted zones as you wish.
4. Please **Enable** the motion detection function.
5. Set up the sensitivity level from: Lowest, Low, Medium and High to Highest.
6. Click the **Submit** button to submit the setting.

### Question 3:

**How do I record on the SD card for 30 seconds when the motion has been activated and use Microsoft Internet Explorer to view the recorded files?**

#### ◇ Recording the images into an SD card while the motion detection function is working

1. Click the **Application** button in the home page.
2. Click the **Enable** button below the ALARM item on the left side of the page to enter the “Alarm Application Enable Setting” page.

3. Check on “Enable Alarm-Save into SD Card” to activate it.
4. Click the **Submit** button to submit the setting.

**NOTE: Please remember to insert the SD card into the built-in SD slot of the unit first.**

◇ **Set the recording time (the AVI duration) of the SD card**

1. Click the **Application** button in the home page into the “SD Card Application Setting” page.
2. Choose the **AVI Duration** from the drop-down list.  
If you want to record the file into the SD card for 30 seconds, please choose 30 seconds.
3. Click the **Submit** button to submit the setting.

◇ **Use IE to view the recorded files**

1. Click the **SD Card** button in the home page to enter the page containing the “Filelist of Memory Card”.
2. Click the filename which you want to view.
3. It will ask you to enter the username and password.
4. If you didn't set the other player before, the AVI file will be played by the Windows Media Player.

**Question 4:**

**How do I use the DynDNS to connect the IP camera by using its Sub Hostname via the intranet?**

◇ **Set the DDNS function**

1. Click the **Network** button in the home page.
2. Click the **DDNS** button on the left side of the page to enter the “DDNS Setting” page.
3. Check on the “Enable DDNS Function” to activate it.
4. Choose one of the DDNS Types from the drop-down list.  
If you didn't register for a DDNS before, please choose one of the DDNS Type then press “Apply” button to its registering homepage and register as a member.
5. Enter the DDNS Host Name, DDNS Account and DDNS Password which you created in the [www.dyndns.com](http://www.dyndns.com) website.
6. Click on the **Submit** button to submit the setting.

**NOTE: Please refer to the APPENDIX 4 for more details.**



#### ◇Set the PPPoE function

1. Click the **Network** button in the home page.
2. Click the **PPPoE** button on the left side of the page to enter the “PPPoE Setting” page.
3. Choose “ON” from the “PPPoE Mode” list to activate it.
4. Enter the Account and the Password which are provided from your ISP.
5. Click the **Submit** button to submit the setting.

**NOTE: Please refer to section 5.1.8 for more details.**

#### ◇Use the Sub Hostname to view the IP camera

1. Click the URL block at the top of the PC screen.
2. Enter the DDNS Host Name of the IP camera into the URL block and press the “**Enter**” button to enter the login page.
3. Enter the user name and fill in the password.
4. Click the “**OK**” button and enter the home page of the IP camera.

### Question 5:

**How to add or modify the users and their authorities of using the IP camera?**

#### ◇Entering the setting page

1. Click the **System** button in the home page.
2. Click the **Users** button on the left side of the page to enter the “System - Users” page.

#### ◇Add a new user

1. Please enter the user name, the password, the confirmed password and choose the authority.

There are three different levels of authorities, namely Admin, Operator and Viewer.

**Admin:** The user who accesses with the admin name and password has the full rights to change the settings of the IP camera.

**Operator:** The suggested choice for normal use.

**Viewer:** The user who accesses with just the viewer name and password has only limited rights to view.

2. Click the **Submit** button to submit the new user’s setting.

#### ◇Modify the user

1. Click the user name you want to modify on the **User List**.
2. Enter the password, the confirmed password and choose the authority.
3. Click the **Submit** button to submit the new setting.

#### ◇Delete a user

1. Click the user name you want to modify on the **User List**.
2. Click the **Delete** button.

## 7. SPECIFICATIONS

<b>Model</b>	<b>ADCIPEBN</b>	VideoEdge IP Box Camera, 24VAC/12VDC, NTSC, w/PS	
	<b>ADCIPEBPE</b>	VideoEdge IP Box Camera, 24VAC/12VDC, PAL, EU Plug, w/PS	
	<b>ADCIPEBPU</b>	VideoEdge IP Box Camera, 24VAC/12VDC, PAL, UK Plug, w/PS	
<b>Video</b>	Video sensor	1/3" Sony Super HAD CCD (with HQ1 DSP)	
	System	NTSC/ PAL	
	Horizontal resolution	520 TV lines	
	Lens	C/CS mount	
	Auto Iris type	DC-iris	
	Day and Night	Mechanical IR Cut Filter: Auto; Color / Monochrome	
	AWB	2500°K ~ 9500°K	
	AES	1/60 (PAL 1/50)~ 1/100000 sec	
	High speed shutter	1/1000 sec	
<b>Min. illumination</b>	Color	0.5 lux @ F1.2	
	B/W	0.03 lux @ F1.2	
<b>Image</b>	Compression	MJPEG	MPEG4
	Resolution	352 x 240 720 x 480 (Frame) 720 x 240 720 x 480 (Field)	Full D1 VGA Half VGA 2CIF CIF QVGA
	Frame-rate	--	30 (25) / 24/ 15/ 10/ 5 FPS
	Picture size (quality)	4~64KB	64Kbps ~ 8Mbps (Bit rate)
	Configurations	Max AGC, Contrast, Brightness, WB, BLC, Sharpness, Saturation, Flickerless, Mask area	
	Motion detection	Motion Detection (96 zones, 5 levels)	
<b>Audio</b>	Built-in microphone	8 kHz sample rate	
<b>Network</b>	Interface	Ethernet (RJ-45 wired, 10/100 base-tx), MDIX support	
	Protocols	TCP/IP, DHCP, HTTP, ICMP, UPnP, ARP, DNS, DDNS, PPPoE RTP, RTSP, FTP**, SMTP**	
	Throughput	2.0M bytes/sec	
<b>Software</b>	Web browser	Microsoft IE 6.0 or above	
	Development tools	ActiveX / HTTP-API / SDK	
	Security	Multiple level / Multiple users / IP address filtering	

<b>Connectors</b>	Video output	1.0 Vpp, 75 ohm, composite, negative, BNC x 1
	Alarm I/O	1 input / 1 output
	Serial port	RS-485
	SD card	Alarm and Schedule recording / update
	USB	Configuration / Update
	Reset	Factory Default
<b>Others</b>	LED indicator	Power / Network indicator
	Power requirement	DC12V / AC24V** (6W)
	Operating Temperature	0°C ~ 50°C
	Dimensions	60(W) x 45(H) x 94(D) mm
	Approvals	FCC, CE, RoHS
	Accessories	Power adapter x 1 USB wire x 1 User manual x 1

\* Specifications are subject to change without notice.

\* FTP and SMTP functions are for PAL version only.

\*\* This device's requires AC 24 voltage, which is within the range of the SELV (Separated or safety extra-low voltage).

## 8. Functions of client PC

System requirement	Windows 2000, XP or above
Browser	IE 6.x
Live Monitor	Max. 16 Split , Real Time REC/ Capture/ Audio/ Live Event/ Full Screen
Playback Viewer	Playback, Time / live event Search / Export (JPEG / AVI)
Settings	Device/ System/ Camera management/ web page
Multi-camera link	Max. 16 camera



## APPENDIX 1. –IP camera UPnP How To

The most troublesome issue when you setup a LANCam<sup>®</sup> is that you have no idea what the IP address of this device is. Now LANCam<sup>®</sup> supports the UPnP (Universal Plug and Play) protocol which makes it easier for you to examine it; however, Microsoft Windows XP<sup>®</sup> doesn't start this service by default. Therefore, the following procedures will help you to turn it on and discover your LANCam<sup>®</sup> step by step as shown in Figure1 below.

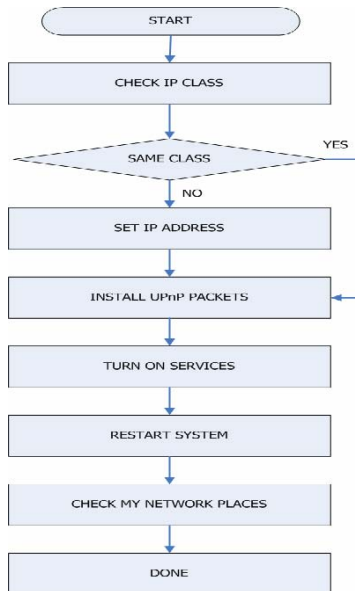


Figure 1 UPnP Setup Flow Chart

### 1. Check the IP class of your PC

In most cases Microsoft Windows XP<sup>®</sup> will assign an IP address, 169.254.\*.\*, automatically with a subnet mask, 255.255.0.0, if the DHCP server is absent, while the default IP address of a LANCam<sup>®</sup> is 192.168.1.168 with a subnet mask of 255.255.255.0. There won't be any communication due to different IP class domains, and you have to modify the relative settings or the UPnP protocol won't work; however, checking your own IP address is necessary. Here are the procedures to check and modify them.

**Step 1:** From the **Start** menu, point to **Settings**, and then click **Control Panel**. See Figure 2.

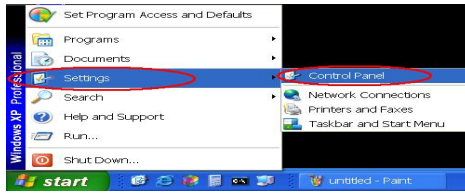


Figure 2

**Step 2:** When **Control Panel** appears, double-click the **Network Connections** icon. The **Network Connections** dialog box appears. See Figure 3.

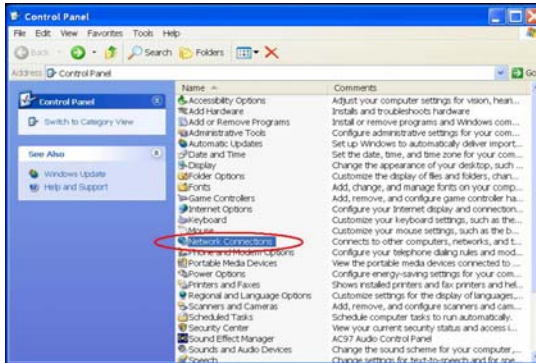


Figure 3

**Step 3:** Click the **Protocols** tab in the **Network Connections** dialog box. See Figure 4.

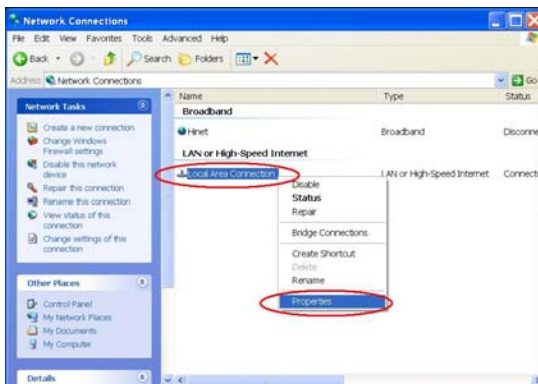


Figure 4

**Step 4:** When the **Local Area Connection Properties** dialog box shows up, choose **Internet Protocol (TCP/IP)** and click **Properties**. See Figure 5.

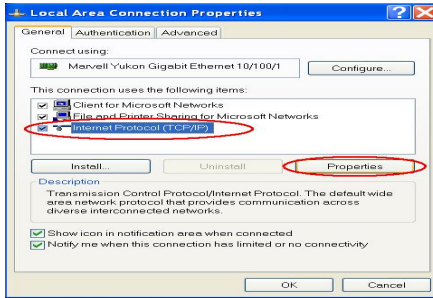


Figure 5

**Step 5:** In the **Internet Protocol(TCP/IP) Properties** dialog box, choose **Use the following IP Address** to indicate that you do not wish to use DHCP, and assign IP Address 192.168.1.200 with Subnet mask 255.255.255.0. Click **OK** when you finish it. See Figure 6.

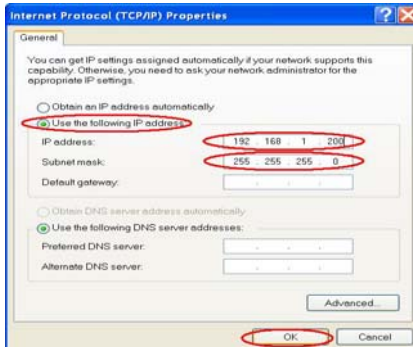


Figure 6

**Step 6:** Choose **Close** to finish the modification. See Figure 7.



Figure7

## 2. Install UPnP Packets

As described before, Microsoft Windows XP<sup>®</sup> doesn't start the UPnP service by default; however, we have to install some packets before we initialize it. The following steps will help you to install them.

**Step1:** From the **Start** menu, point to **Set Program Access and Defaults**, and then click it. See

Figure 8

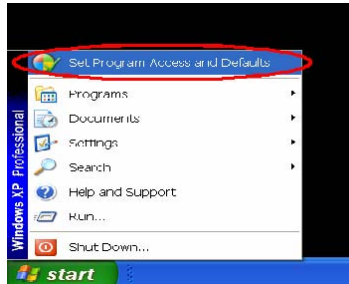


Figure 8

**Step 2:** When the **Add or Remove Programs** dialog box appears, click the **Add/Remove Windows Components** button. See Figure 9.

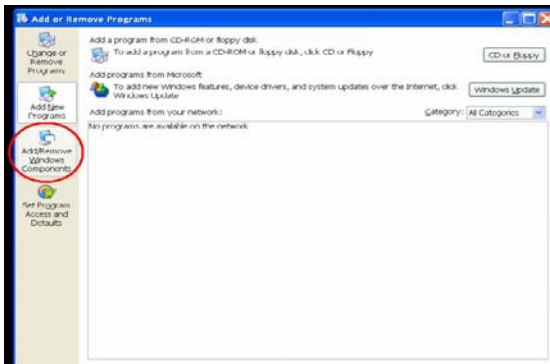


Figure 9

**Step 3:** Check the **Network Services** in the **Windows Component Wizard** dialog box, and then click **Details...** See Figure10.

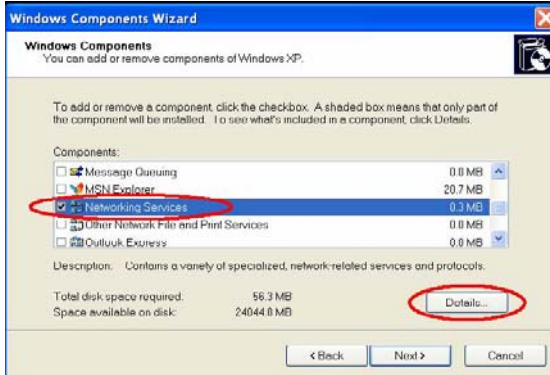


Figure 10

Step 4: Check UPnP User Interface, and choose OK. See Figure 11.

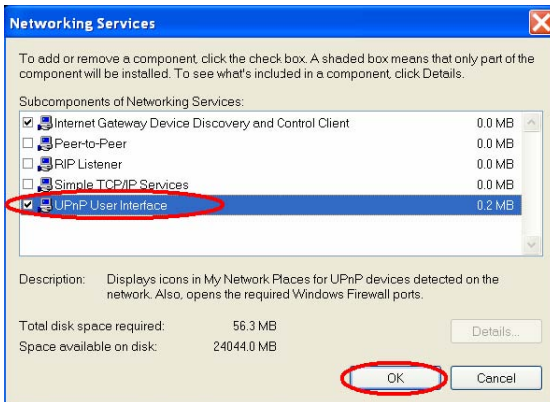


Figure 11

Step 5: When the original Network Component Wizard dialog box returns, click Next. See Figure 12.

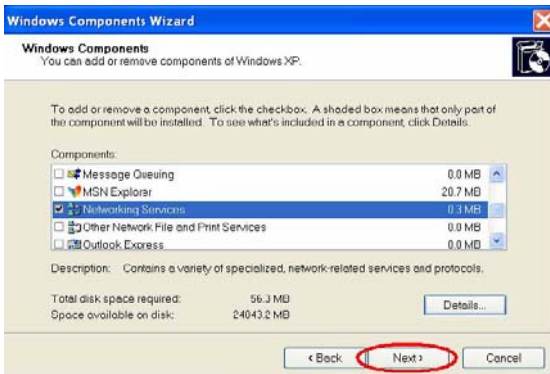


Figure 12

**Step 6:** After about one minute the UPnP installation will be done, and choose **Finish** to close it.

See Figure13.



Figure 13

### 3. Turn on Services

After installation, you must turn on the relative services to start the UPnP protocol. The following procedures demonstrate this.

**Step 1:** From the **Start** menu, point to **Settings**, and then click **Control Panel**. See Figure14.

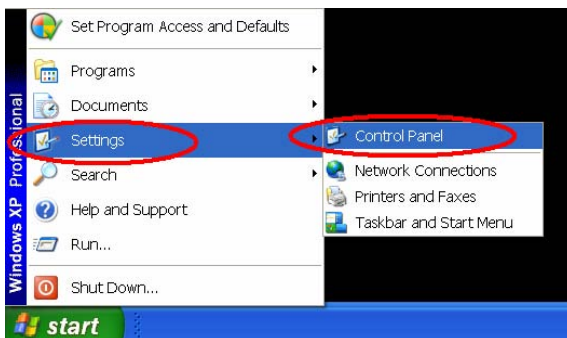


Figure 14

**Step 2:** When **Control Panel** appears, double-click the **Administrative Tools** icon. The **Administrative Tools** dialog box appears. See Figure15.

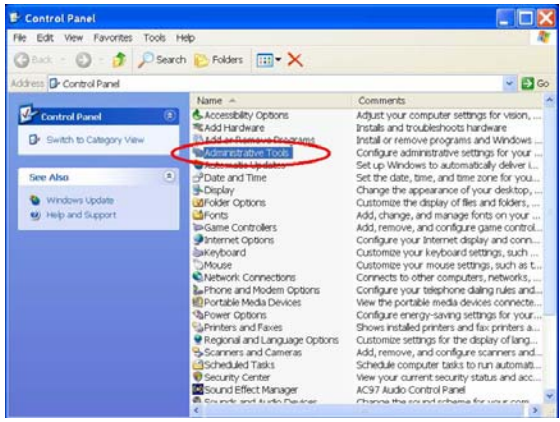


Figure15

Step 3: Click on the **Services** icon in the **Administrative Tools** dialog box. See Figure 16.

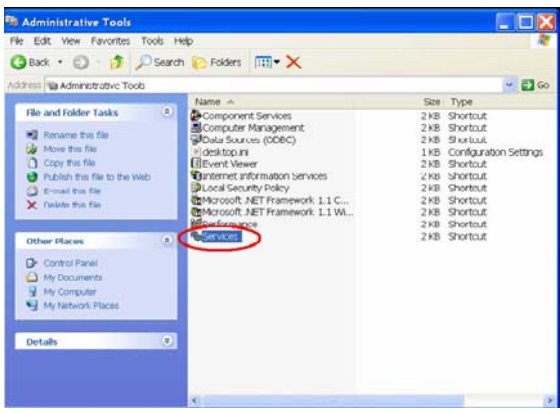


Figure16

Step 4: When the **Services** dialog box shows up, double click the **SSDP Discovery Service** icon. See Figure 17.

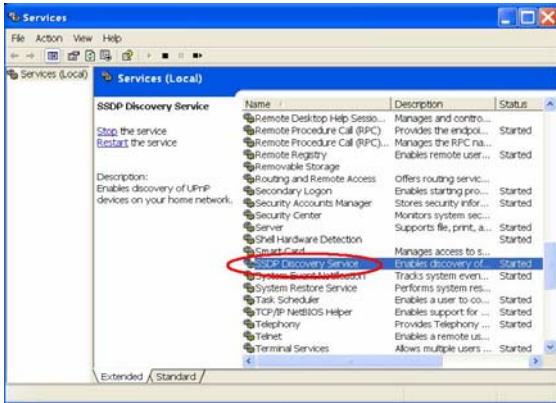


Figure17

**Step 5:** Choose **Automatic** in the **Startup type**, and click **OK** to start it. See Figure18.

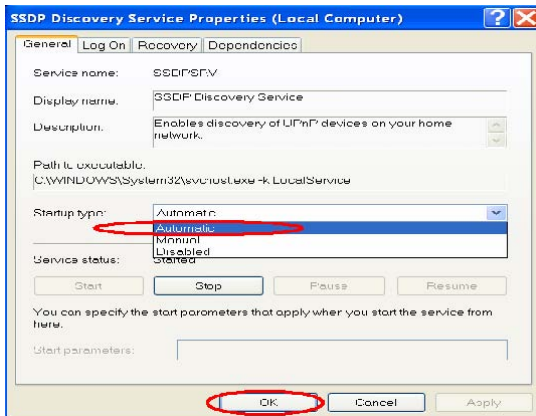


Figure18

**Step 6:** When the **Services** dialog box appears again, double click the **Universal Plug and Play Device Host** icon. See Figure19.



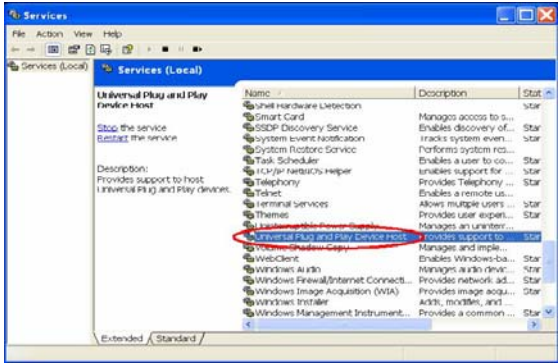


Figure19

**Step 7:** Choose **Automatic** in the Startup type, press the **Start** button, and click **OK** to start it.

See Figure20.

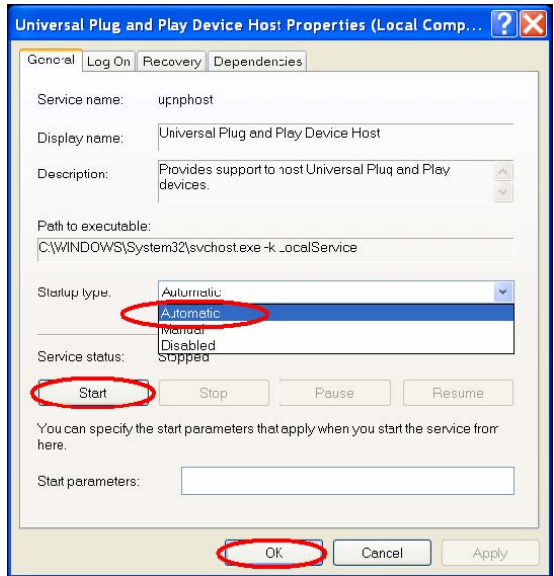


Figure20

**Step 8:** Restart your system.

#### 4. Scan LANCams<sup>®</sup> through My Network Place

After your installation and starting services, the UPnP protocol will take effect. You can scan all LANCams<sup>®</sup> in My Network Place like Figure21 and Figure22 below.

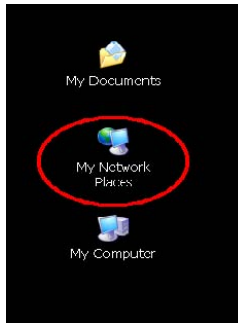


Figure21

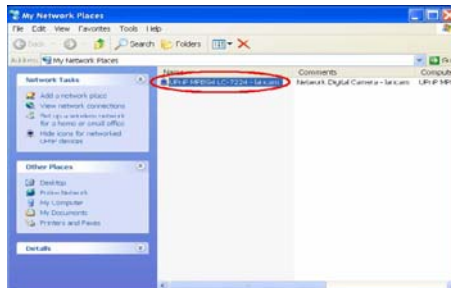


Figure22

Just double click the **UPnP MPEG4 IP camera** the video live stream will pop up automatically without assigning any IP address in Microsoft Internet Explorer.

## APPENDIX 2. –The ARP function

### Setting the IP Address

The Ethernet interface on the LANCam has a default IP address (192.168.1.168) that most likely needs to be changed to make it work on your local network. You need to acquire a unique IP address (ask your network administrator). For the initial setting of the IP address the LANCam needs to be connected to the same network segment as your client, and the IP address can then be configured by using a combination of ARP and ping command.

Use any of the following ways to set the IP address within thirty seconds after booting the LANCam (re-cycle the power). Setting IP using the method below can only be done on the Ethernet interface.

### ARP and ping from Windows or MS-DOS:

The user can open the PC's MS-DOS windows from the WINDOWS 98 operating system, or open the PC's Command Prompt windows from either the WINDOWS 2000 or the WINDOWS XP operating system.

1. Start a DOS prompt window
2. Type the following in 30 seconds after the booting:

```
arp -s <IP address> <Ethernet address>
```

```
[or arp -s <IP address> < MAC address>]
```

```
ping <IP address>
```

Example:

```
arp -s 192.168.1.100 00-0C-0C-00-00-01
```

```
ping 192.168.1.100
```

The IP address now is: 192.168.1.100.



## **ARP and ping from UNIX or GNU/Linux:**

1. Start a shell
2. Type the following as superuser (root):  
arp -s <IP address> <Ethernet address>  
[or arp -s <IP address> < MAC address>]

ping <IP address>

Example:

```
arp -s 192.168.1.100 00-0C-0C-00-00-01
```

```
ping 192.168.1.100
```

The device responds to the ping in the examples above if the new address was configured. Note, this method will set the IP address permanently.

**NOTE: The default account and password after the reset are admin and 9999.**

### APPENDIX 3. –Register as a DDNS member

The DDNS (dynamic domain name system) is a function which is provided by an American company. Please refer to [www.dyndns.com](http://www.dyndns.com). This chapter provides the user with the basic instructions on how to register a free DDNS service.

#### Registering for a DDNS

Enter the URL [www.dyndns.com](http://www.dyndns.com). In the upper right-hand corner of the main page, where there is an item, "Create Account", as shown in Figure 1.

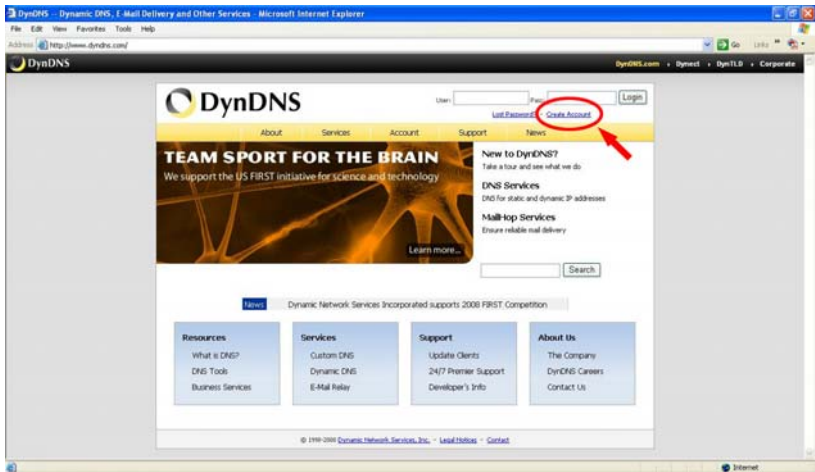


Figure 1

#### Create an account

After clicking "Create Account", you will enter the Create Account page. Please complete the form at the bottom of the page to create your account. You will receive an e-mail containing instructions to activate your account. If you do not follow the directions within 48 hours, you will need to recreate your account.

#### Set up the DDNS

After creating the account successfully, please enter your user name and password in the upper right-hand corner of the main page to login, as shown in Figure 2.

After you login successfully, a text will appear saying "My Services", as shown in Figure 3.

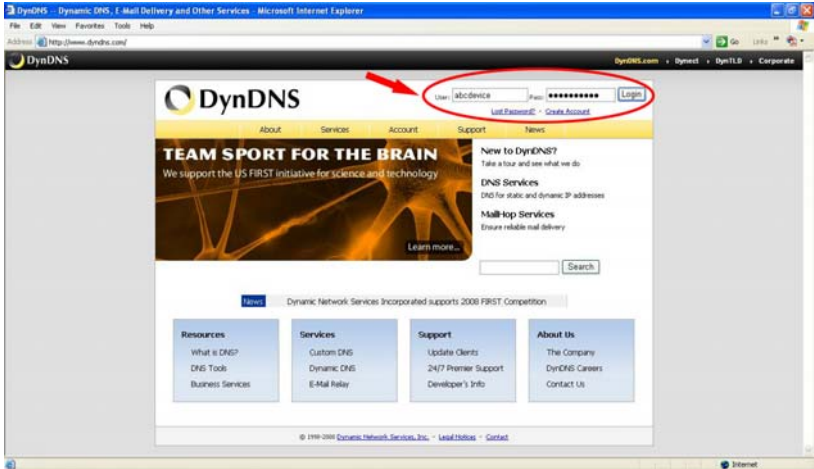


Figure 2

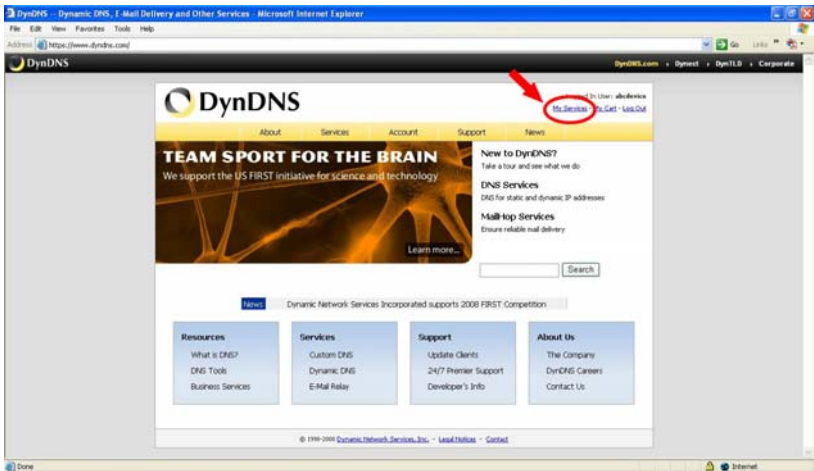


Figure 3

Click "My Services" to enter the service page. Please click the "Add Host Service" item which is below the "My Hosts" item, as shown in Figure 4.

Click "Add Host Service", and its service items will appear. The Add Dynamic DNS Host item helps to add a new DDNS. Each member may have only one free account, and one free account can have only five DDNS.

Click Add Dynamic DNS Host to enter the DDNS setting page as shown in Figure 5.

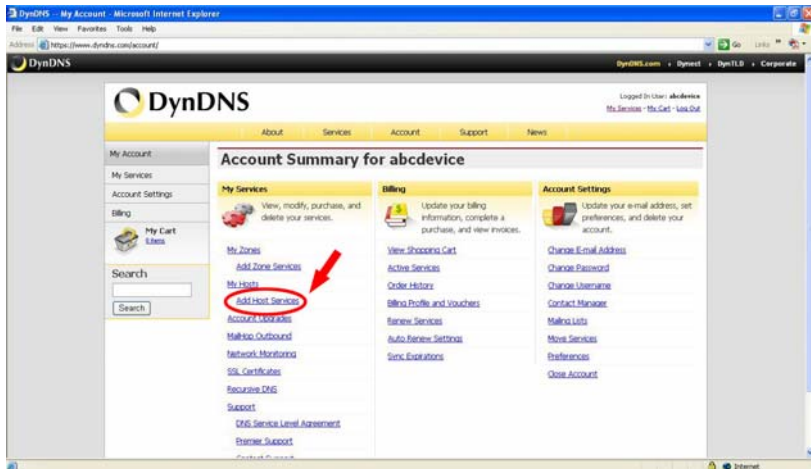


Figure 4

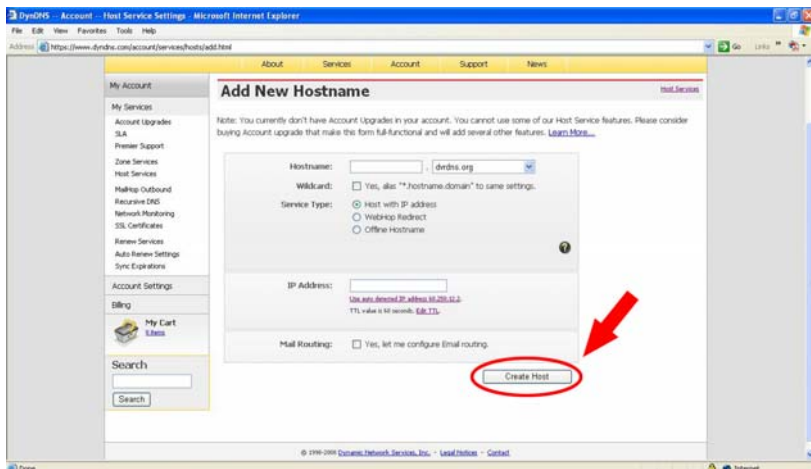


Figure 5

All we have to set in this page is the “Hostname” item. The user can choose a Sub Hostname as s/he likes from the right-hand side of the Hostname’s drop-down list.

**NOTE: You don’t have to set the “IP Address” in the same format as the camera’s IP Address. It will renew the IP Address automatically.**

After finishing the setting, please press the “Create Host” button as shown in Figure 5.

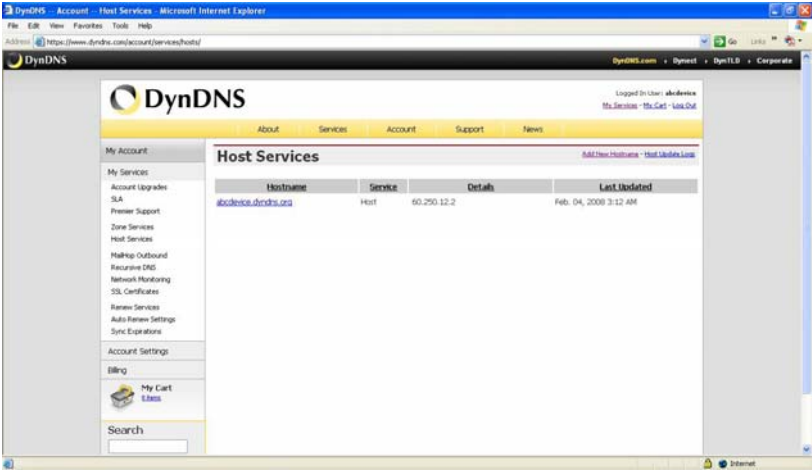


Figure 6



## APPENDIX 4. –MPEG4 Bit Rate Lookup Table of IP camera

1. When frame rate is higher than 15 frames/second (15 is not including):

	Highest	High	Medium	Low	Lowest
FULL D1	3	2.5	2	1.5	1
VGA	2.63	2.25	1.75	1.31	0.88
2CIF	1.5	1.25	1	0.75	0.5
Half VGA	1.31	1.13	0.88	0.67	0.44
CIF	0.75	0.63	0.5	0.38	0.25
QVGA	0.66	0.56	0.44	0.38	0.22
ZOOM * 2	3	2.5	2	1.5	1
ZOOM * 3	3	2.5	2	1.5	1
ZOOM * 4	3	2.5	2	1.5	1

2. When frame rate is lower or equal to 15 frames/second:

	Highest	High	Medium	Low	Lowest
FULL D1	2.25	1.94	1.5	1.13	0.75
VGA	1.94	1.69	1.31	0.98	0.66
2CIF	1.13	0.94	0.75	0.56	0.38
Half VGA	0.98	0.84	0.66	0.49	0.33
CIF	0.56	0.47	0.44	0.28	0.19
QVGA	0.5	0.44	0.34	0.25	0.19
ZOOM * 2	2.25	1.88	1.5	1.125	0.75
ZOOM * 3	2.25	1.88	1.5	1.125	0.75
ZOOM * 4	2.25	1.88	1.5	1.125	0.75

**\*The unit is in Mbps/second.**

## APPENDIX 5. –FAQ

1. How do I disable the DHCP function and use a static IP instead?

A : Turn up the “DIP SWITCH” from “3” to “4” and change the relative network settings, the IP Address, NetMask and Gateway on the image web page.

2. Can the SD card be removed during recording?

A : No, it cannot be removed until the recording comes to a single point. The POWER LED flashing light signals the SD card is operating. The green light indicates the unit is activating. The red light warns the SD card cannot be removed. If the SD card is withdrawn in this mode, the card will break.

3. I've set the function of “Motion Detection” but it doesn't seem to work.

A : Check if “Motion range” and “Sensitivity” have been set before activating the function.

4. My AVI files recorded in the SD card cannot be displayed. What can I do to display the files?

A : Please visit “<http://www.morgan-multimedia.com/>” to download “Morgan M-JPEG codec” and install it, and then check the selection of the “IJP Core”.

5. How do I turn on/off the OSD (on screen display) on/off on the IP camera?

A : Visit the homepage - [tailpage.htm](#) of the device, and select "ON" or "OFF" in the OSD column.

Example: suppose the IP address of the device is 192.168.1.168

Enter <http://192.168.1.168/tailpage.htm> ( a registration is needed) and select "ON" or "OFF" in the OSD column.

**WARNING: Please write down the IP address of the device before you turn off the OSD.**

## Free Manuals Download Website

<http://myh66.com>

<http://usermanuals.us>

<http://www.somanuals.com>

<http://www.4manuals.cc>

<http://www.manual-lib.com>

<http://www.404manual.com>

<http://www.luxmanual.com>

<http://aubethermostatmanual.com>

Golf course search by state

<http://golfingnear.com>

Email search by domain

<http://emailbydomain.com>

Auto manuals search

<http://auto.somanuals.com>

TV manuals search

<http://tv.somanuals.com>