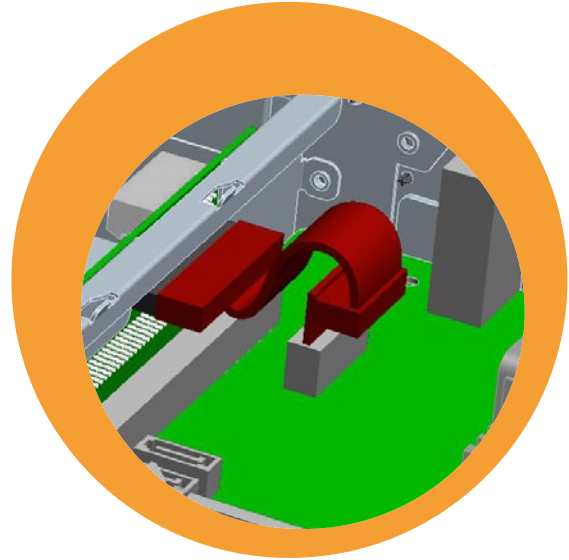


- Included Items:
- One PCIeXI adaptor kit



Quick Installation Guide

Installing the PCIeXI adaptor kit for the B-Series Touchcomputer

Caution:
The touch computer must be unplugged before any installation occurs.



www.elotouch.com



Revision 1
P/N E338982

North America
Elo Touchsystems
301 Constitution Drive
Menlo Park, CA 94025
www.elotouch.com

Elo Technical Support
Online self-help:
www.elotouch.com/go/websupport
Technical Support contacts in your region:
www.elotouch.com/go/contactsupport

Europe
Tel +32 (0)16 35 21 00
Fax +32 (0)16 35 21 01
elosales@elotouch.com

Asia-Pacific
Tel +81 (45) 478-2161
Fax +81 (45) 478-2180
www.tps.co.jp

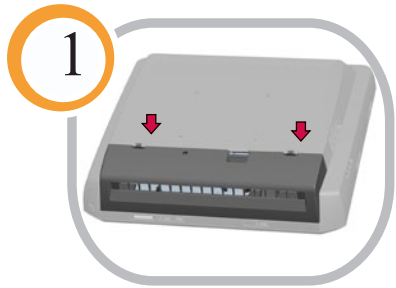
Latin America
Tel 1-305-428-5210
Fax 1-305-717-4909
www.elotouch.com.ar

Elo (logo), Elo TouchSystems, TE (logo) and Tyco Electronics are trademarks of the Tyco Electronics group of companies and its licensors.



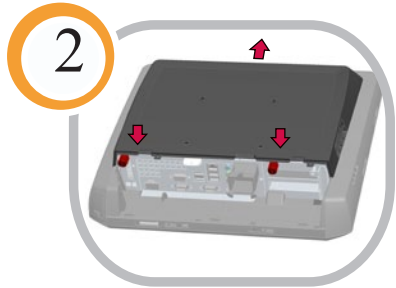
Tyco Electronics

Our commitment. Your advantage.



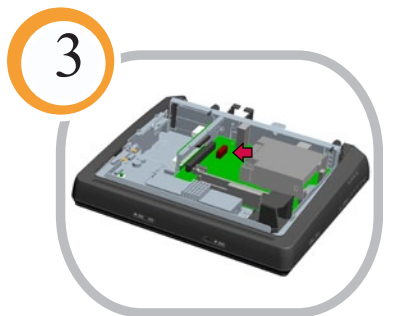
1

Remove the cable cover.



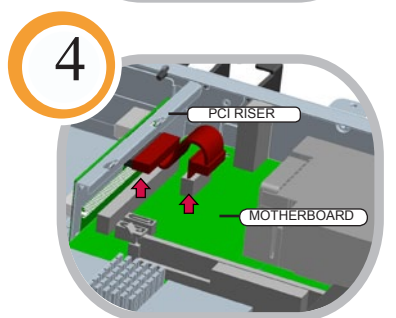
2

Remove the rear cover by unscrewing the two thumb screws and sliding the cover upward.



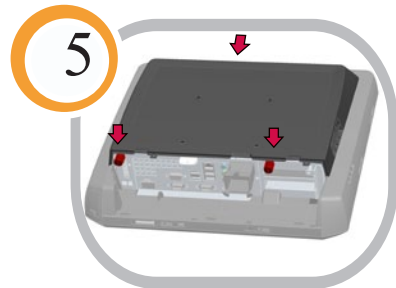
3

Locate the PCI riser connector on the motherboard (shown in red on left).



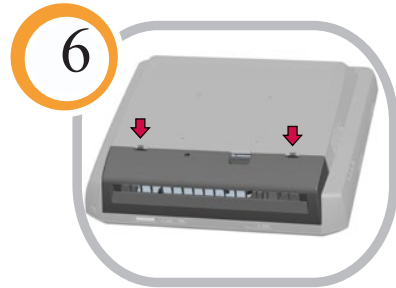
4

Connect both ends of the adaptor as shown between the motherboard and the PCI riser.



5

Re-install the rear cover and tighten the thumb screws.



6

Re-install the cable cover.

Free Manuals Download Website

<http://myh66.com>

<http://usermanuals.us>

<http://www.somanuals.com>

<http://www.4manuals.cc>

<http://www.manual-lib.com>

<http://www.404manual.com>

<http://www.luxmanual.com>

<http://aubethermostatmanual.com>

Golf course search by state

<http://golfingnear.com>

Email search by domain

<http://emailbydomain.com>

Auto manuals search

<http://auto.somanuals.com>

TV manuals search

<http://tv.somanuals.com>