

WARRANTY REGISTRATION

Visit www.ultimatesupport.com for a quick and convenient process for registering your new Ultimate Support product. Warranty Registration and Proof of Purchase are required for warranty fulfillment. Full Limited Lifetime Warranty and Ultimate Protection Plus Premium Service and Support Plan details are available online under Music Gear & Instrument Stands / Customer Support.

ULTIMATE
SUPPORT™

LIMITED LIFETIME WARRANTY

Ultimate Support products are constructed of the finest materials and designed and tested to stand up to the demanding lifestyle of the touring musician, gigging DJ, and working sound engineer. In the unlikely event that a product should fail due to manufacturing defect, Ultimate Support is pleased to repair or replace that product.

Please see www.ultimatesupport.com for more information.

This warranty applies to the original purchaser only and does not include damage to the product resulting from normal wear and tear, accident, misuse, improper installation or operation, or unauthorized repair or alterations.

800.525.5628 . www.ultimatesupport.com . Copyright 2009, Ultimate Support Systems . All Rights Reserved

ULTIMATE
SUPPORT™

THE STRENGTH OF INNOVATION

Product Manual
for Ultimate Support

SPEAKER STAND

TS-70B
ITEM #13712



ULTIMATE
SUPPORT™
LIMITED LIFETIME WARRANTY

Revision 6, 03.21.09 . Product Manual Item #13712M



GET LASTING VALUE!

Safe & Secure

Supports more weight than other lightweight stands; locking pin for absolute speaker security.

Truly Portable

Quickly folds into an ultra-slim, lightweight unit.

Versatile & Reliable

Includes integrated socket adapter and foot caps that won't fall off.

Limited Lifetime Warranty

Constructed of the finest materials and backed by our award-winning customer support (see Warranty Information on pg. 4 for details).

SET-UP



STEP 1

Loosen leg fitting hand knob.

STEP 2

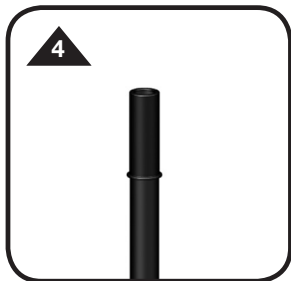
Slide leg fitting down to maximum diameter of leg spread (leg braces should be parallel to the floor). Tighten hand knob.

CAUTION: Do not over tighten hand knob; usually two turns is enough. Also, do not store in tightly locked position.



STEP 3

Remove safety pin from slot on upper telescoping tube. Loosen hand knob on telescoping collar and raise center tube 6-10". Retighten hand knob.



STEP 4

Select the correct size socket adapter. Put speaker cabinet on top. Slowly loosen the hand knob and raise the cabinet to desired height. Tighten hand knob. Insert safety pin into slot on the telescoping tube.



STEP 5

To lower speaker, remove the safety pin from the slot. Slowly loosen the hand knob. Use caution and slowly lower the upper telescoping tube. Tighten hand knob and remove speaker cabinet.

SPECIAL INSTRUCTIONS

1. Occasionally clean the stand with a damp cloth or non-abrasive cleaner. Do not lubricate or use silicone spray on the center tube.

2. When loading the tripod, ONLY add the speaker when the tripod is in a fully upright position (all legs on the floor).

3. Do not drag the Tripod Speaker Stand while it is loaded; this could cause breakage of the fittings and result in damage to the stand.

4. When supporting equipment, check that the telescoping collar is securely tightened and the safety pin is inserted into slot on upper telescoping tube.

5. Always release the collar with caution and stand clear of load.

ACCESSORIES

Speaker Stand Mounting Bracket

BMB-200K (#10766)

External bracket securely mounts any speaker cabinet with a flat bottom on an Ultimate Support speaker stand.

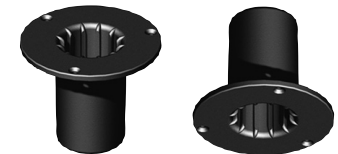


Speaker Stand Socket Mounting Bracket

TSM-150MK (#13421)

TSM-138MK (#13425)

Internal metal bracket securely mounts any speaker cabinet with a flat bottom on an Ultimate Support speaker stand.



Zippered Tote Bags

Heavy-duty, padded, zippered Tote Bags

BAG-90 (#15691)

Holds one TS-70B Speaker Stand
10.5" x 49.5" (267 mm x 1257 mm)

BAG-90D (#15693)

Holds two TS-70B Speaker Stands
14.5" x 49.5" (368 mm x 1257 mm)



Free Manuals Download Website

<http://myh66.com>

<http://usermanuals.us>

<http://www.somanuals.com>

<http://www.4manuals.cc>

<http://www.manual-lib.com>

<http://www.404manual.com>

<http://www.luxmanual.com>

<http://aubethermostatmanual.com>

Golf course search by state

<http://golfingnear.com>

Email search by domain

<http://emailbydomain.com>

Auto manuals search

<http://auto.somanuals.com>

TV manuals search

<http://tv.somanuals.com>