

PA960 Operation Manual



Author: Yukiko Goh

Date Created: 10 November, 2003

Last Update: 29 June 2004

Table of Contents

Chapter 1	Introduction	5
Chapter 2	Unitech's Application	6
2.1	Bootmode	6
2.2	Chatter	8
2.3	DeviceInfo	11
2.4	Flash Manager	12
2.5	GetVK	14
2.6	I/O Card Control	14
2.7	KeyTracARM	17
2.8	Scan2Key	18
2.9	UniPing	20
2.10	Scanner Settings	22
2.11	Virtual Keys	36
2.12	RegFuncKey	38
Chapter 3	Tools and Applications under "Windows"	41
3.1	ActiveNet	41
3.2	Aironet Client Utility	45
3.3	Calibration	48
3.4	MS DOS Prompt Command	49
3.5	Load New Firmware	51
3.6	MSTSC	52
3.7	Net	54
3.8	NICTT	56
3.9	NICUPDATE	60
3.10	Pegterm	61
3.11	pmail	65
3.12	pvblood	68
3.13	pword	68
3.14	rapisrv	68
3.15	rasdemo	69
3.16	repllog	69
3.17	Taskman	71
3.18	visadm	72

3.19	wceload	74
3.20	WMAGS46	74
Chapter 4 Control Panel		83
4.1	Communications	83
4.2	Date/Time	86
4.3	Display	87
4.4	Input Panel	89
4.5	Keyboard	92
4.6	Mouse	94
4.7	Network Configuration	95
4.8	Owner	97
4.9	Password	99
4.10	Power	100
4.11	Regional Settings	102
4.12	Stylus	105
4.13	System	106
4.14	Volume & Sounds	108
Chapter 5 Available Function Keys		111
5.1	Func + Esc	111
5.2	Func + Up Arrow	112
5.3	Func + Down Arrow	112
5.4	Func + TAB	112
5.5	Func + 6	113
5.6	Func + 7	113
5.7	Func + 8	114
5.8	Func + 9	115
Chapter 6 Other Applications		116
6.1	Remote Networking	116
Chapter 7 RF Connection, GPRS and Bluetooth		121
7.1	RF Connection – Cisco Aironet	121
7.2	RF Connection – Lucent Orinoco (Agere System)	124
7.3	RF Connection -- Symbol	126
7.4	RF Connection – Built in RF card model	126
7.5	GPRS – Sierra Wireless Aircard750	138

7.6	GPRS – Option Globe Trotter	132
7.7	Bluetooth -- Socket	139

Chapter 1 Introduction

This operation manual aims at instructions of using Unitech's applications, some useful application programs under "Windows" folder, setting application under "Control Panels" and available function keys in WinCE 3.0 OS.

* Based on Firmware Version: V2.01.08

Chapter 2 Unitech's Application

This chapter introduces some Unitech's made applications which are embedded in the firmware. These applications offer additional facilities and usage to the user besides standard WinCE applications.

Unitech's Made Applications

1. **Bootmode**
2. **Chatter**
3. **DeviceInfo**
4. **Flash Manager**
5. **GetVK**
6. **I/O Card Control**
7. **KeyTracARM**
8. **Scan2Key**
9. **UniPing**
10. **Scanner Setting**
11. **Virtual Keys**
12. **RegFuncKey**

2.1 Bootmode

Path: My computer/Windows/Bootmode.exe

This tool allows you to perform warm boot or update OS when it is necessary.

Warm Boot

1. Double tap "Bootmode".



2. Tap “Warm Boot”. The system will be restart.



Note: If you press and hold “←” key then tap “Warm Boot”, the terminal will be cold started. (Caution: Please backup any important data before you perform cold start)

Update OS

1. Double tap “Bootmode”. Tap “Update OS”.

2. Update OS window pops up. The registry will be restored to default. Proceed anyway? Tap “Yes”.



3. System will be restarted and enter bootloader screen. Insert your CF card with OS image file. Select “2” to update OS.

2.2 Chatter

Path: My computer/Windows/Chatter.exe

This tool allows you to capture and scan barcode automatically in a time interval and at the same time, send the scanned data to your host by wireless network connection.

1. Insert the wireless network card into your terminal and make the setting.
2. Install Chat Server program in your PC/notebook. (You can get this program from Unitech)
3. After install, double click the chat server in your PC/notebook. Set the channel. (Default is 0), click “OK”.



4. Double tap “Chatter” on your terminal.

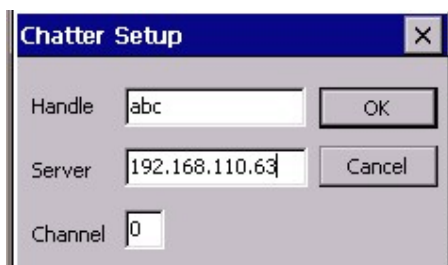


5. In Chatter Setup, under “Handle”, enter a name.

6. Under “Server”, enter the IP address of your host.

7. Under “Channel”, enter the channel (This channel must be the same as the chat server’s channel)

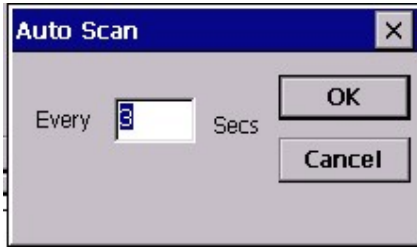
8. Tap “OK”.



9. Scanner Enabled.

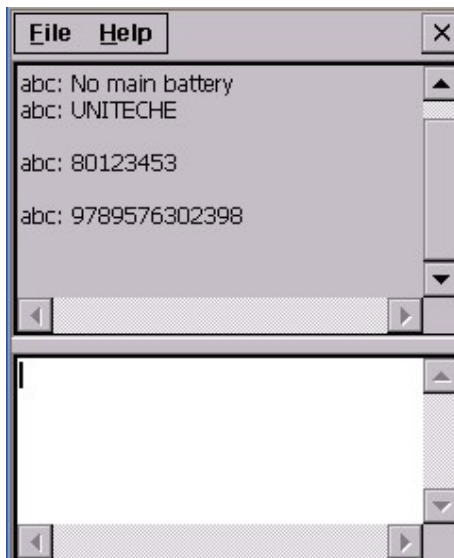
10. From “File” menu, select “AutoScan”.

11. Specify the time interval.



12. Laser window will emit laser in every time interval (Example: 3 seconds). Place the laser window towards the barcodes and let the terminal scan the barcode automatically.

13. The barcode will be read and displayed in chatter’s screen.



14. At the same time, these barcode will be displayed in the screen of the chat server on your host.



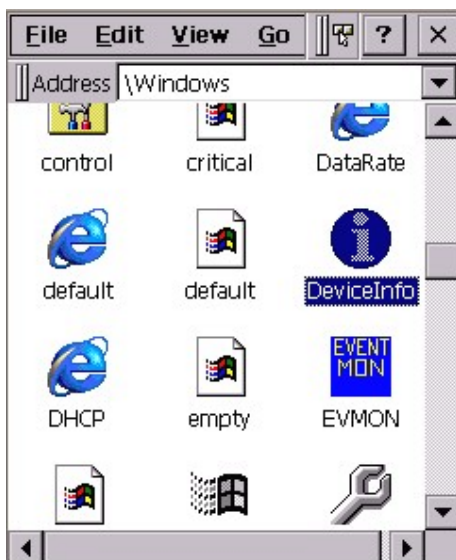
15. On “File” menu, select “Exit”.

2.3 DeviceInfo

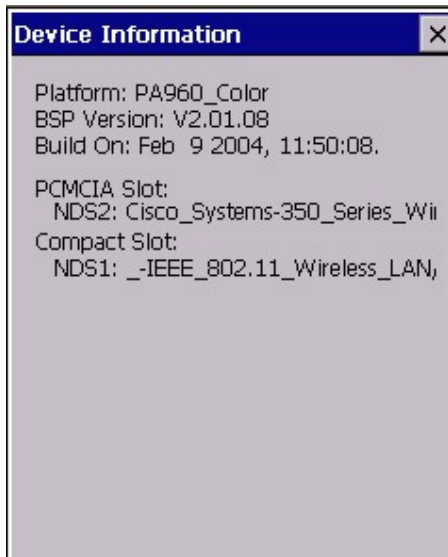
Path: My computer/Windows/DeviceInfo.exe

This tool displays the general information of the terminal such as platform, firmware version, PCMCIA slot and compact slot.

1. Double tap “DeviceInfo”.



2. Device information is shown as below:



3. Tap "X" to exit.

2.4 Flash Manager

Path: My computer/Windows/FlashMan.exe

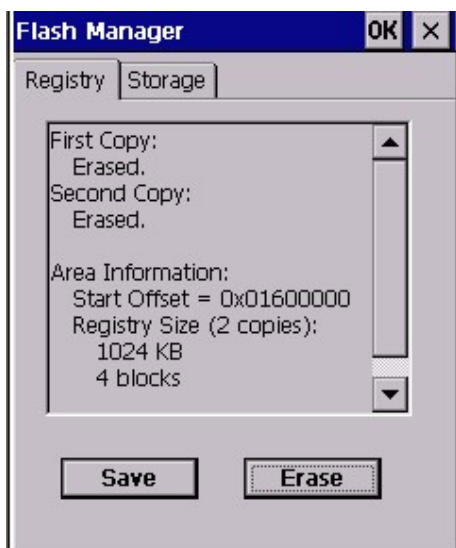
This tool is based on Intell Persistant Store Manager (IPSM) and it is used to clean the data in flash storage folder, save current registry and erase previous saved registry.

1. Double tap "FlashMan".



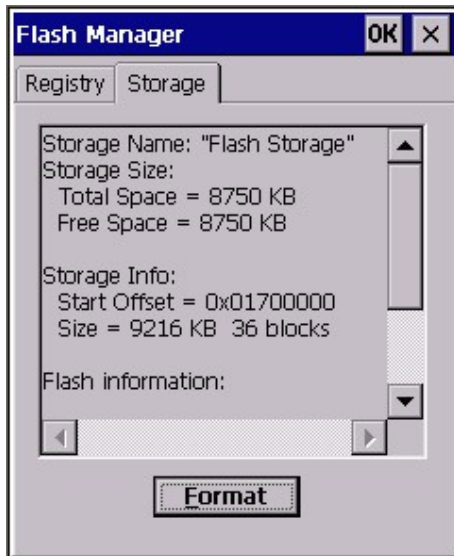
2. Flash manager shows current registry. Tap “Save” if you want to save this registry. Every time warm start and even cold start., (Not on Power Off/On) the registry will be restored to the last time it was saved.

This function helps to keep system information, even at cold start situation. Like IP address and so on.



3. Tap “Erase” button to clean a previous saved Registry duplicate. (Be careful)

4. Tap “Storage” tab and tap “Format”. The Flash Manager will enable to format the Flash Storage folder in order to clean it.



5. Tap “OK” to exit.

2.5 GetVK

Path: My computer/Windows/GetVK.exe

This tool is a keyboard driver that generate standard keyboard event. It is automatically executed every time the terminal is power on. You may see the log of the keyboard event in KeyTracARM. However, if you disable GetVK in Task Manager, you will not see any effect in KeyTracArm. For more details about KeyTracARM, please refer to Chapter 2.7

2.6 I/O Card Control

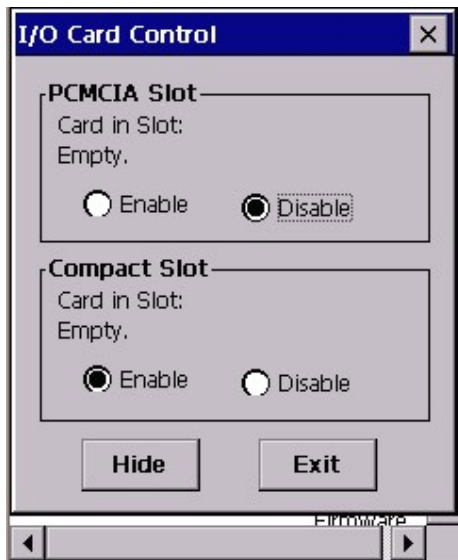
Path: My computer/Windows/IOCard.exe

This tool allows you enable or disable PCMCIA slot and compact slot whenever it is necessary. Once you disable the slot, the card in that slot will not work until you enable the slot again.

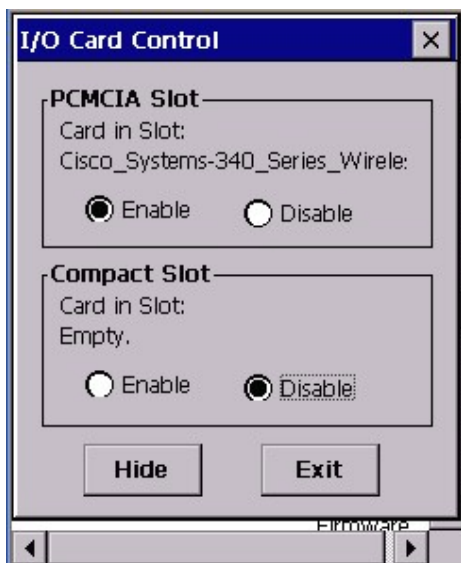
1. Double tap “IOCard”.



2. Tap “Disable” under PCMCIA slot. The PCMCIA interface will not work.



3. Tap “Disable” under compact slot. The compact interface will not work.



4. Tap "Hide" to hide I/O Card Control window.



5. Tap "Exit" to exit I/O card control.

2.7 KeyTracARM

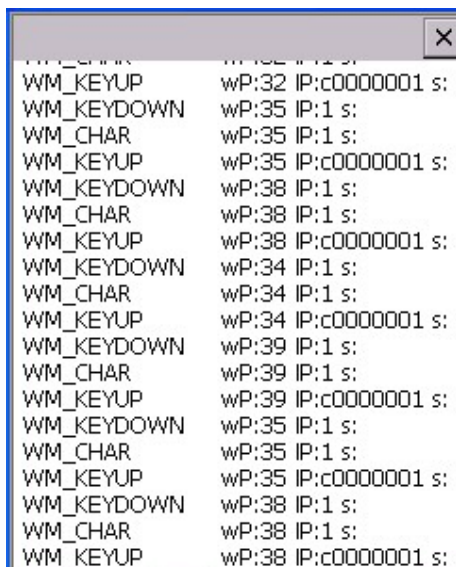
Path: My computer/Windows/KeyTracARM.exe

This tool shows the standard keyboard events in Log format when you press the keys on your terminal. (GetVK must be executed first).

1. Double tap “KeyTracARM”.



2. Press any key on the terminal's keyboard. You will see the event log.



3. Tap “X” to exit.

2.8 Scan2Key

Path: My computer/Windows/Scan2Key.exe

Scan2Key application can route input from scanner port to keypad buffer, so that all input from scanner or magnetic reader will be treated as they are just input from keypad. With this router, scan data can be directly input into non- scanner port aware application, like MS Pocket Word.

1. Double tap “Scan2Key”.



2. You will see Scan2Key icon on the task bar. Scan2Key is enabled.

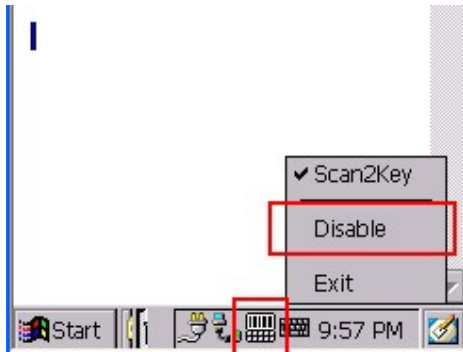


3. Under “Start” > “Program”, select Microsoft Pocket Word.

4. Scan some barcodes. The barcode data will be displayed on MS Pocket Word.



5. To disable the Scan2Key, place the stylus on the Scan2Key icon on task bar, a selection menu will pop up. Select “Disable”.



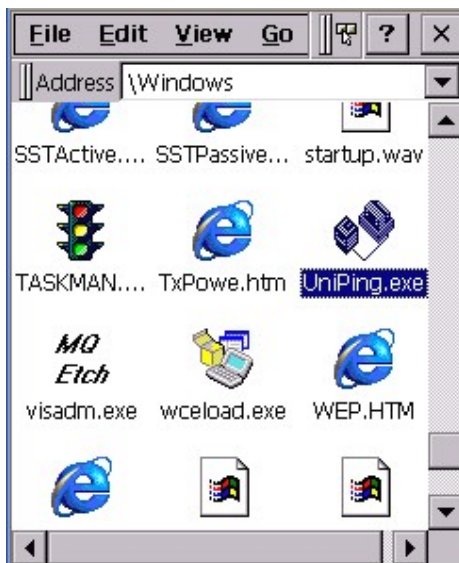
6. To close Scan2Key, select “Exit” on the pop menu.

2.9 UniPing

Path: My computer/Windows/UniPing.exe

This tool allows you to ping to any host or any computer in the network, it can show its own IP too. (For network connection, use wireless card or Ethernet card)

1. Double tap “UniPing”.



2. Under “Tools” menu, select “Ping”.

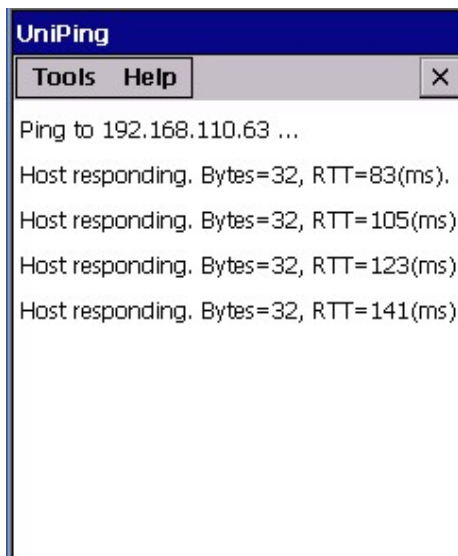
3. In “Host” field, key in the IP address of the host that you want the terminal to ping.

(Example: Ping to my computer)

4. Specify the timeout time.
5. Tick “Constant Ping”.
6. Select interval time. (Example: 1 seconds). Tap OK.



7. Terminal start to ping (to my computer) in every second.



8. Under “Tools” menu, select “Local IP”.
9. Local IP window pops up and shows the IP address of this terminal.



10. Select “Exit” under “Tools” menu to close Uniping.

2.10 Scanner Settings

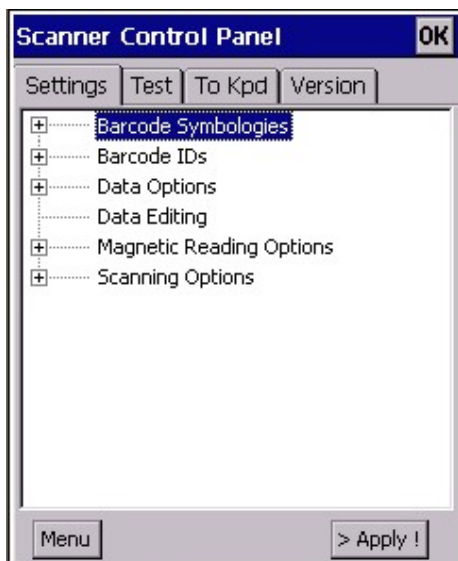
Path: Control Panel/Scanner Settings.exe

This tool allows you to make some settings on scanner such as barcode symbologies, barcode IDs, data options, data editing, scanning options in order to change the scanner behaviour. Besides, it allows a scanning test. Every time change the setting, must click “Apply” button to get the effect.

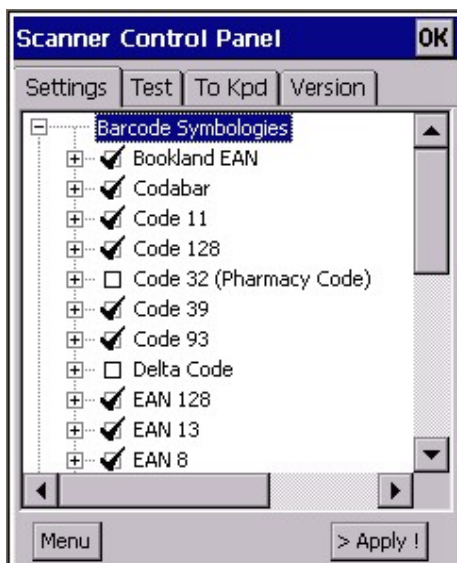
1. Double tap “Scanner Settings”.



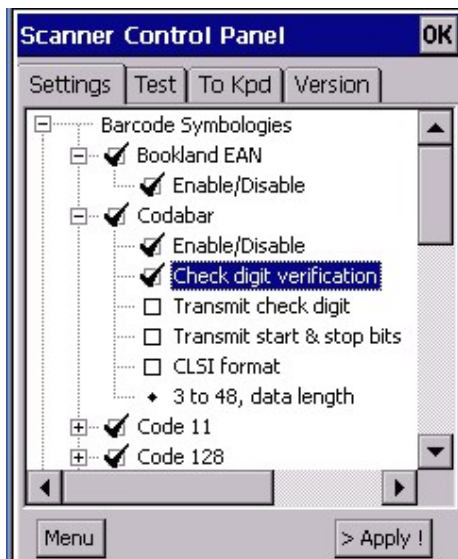
2. Under “Setting” tab, tap “Barcode Symbologies”.



3. Tap “+” in front of “Barcode Symbologies”. You will see a list of available barcode type.

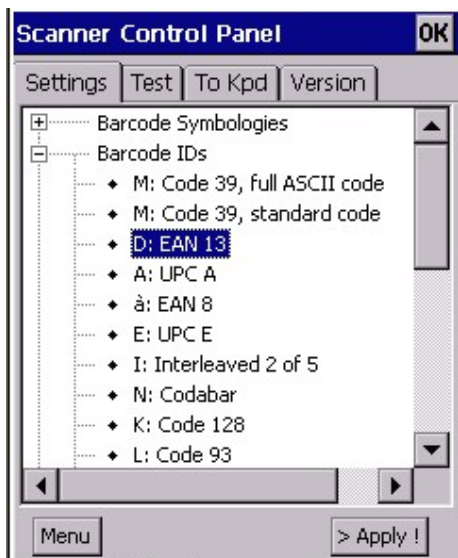


4. Tap “+” to expand the tree. Under each barcode type, there are more options such as enable/disable, check digit verification, transmit check digit etc. Tick the options that you want to apply on that barcode. Then, tap “Apply” button.

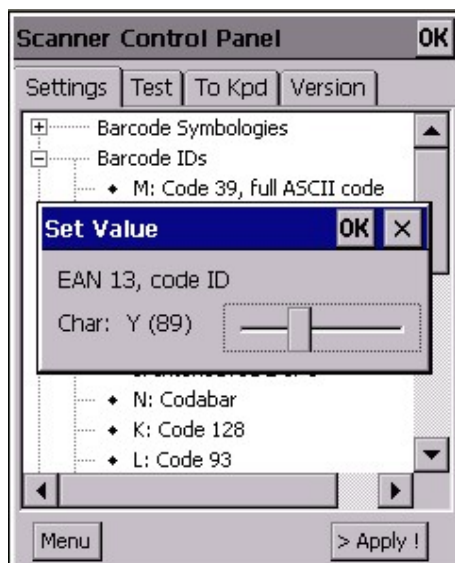


5. The scanner decoder will work as what you have specified.

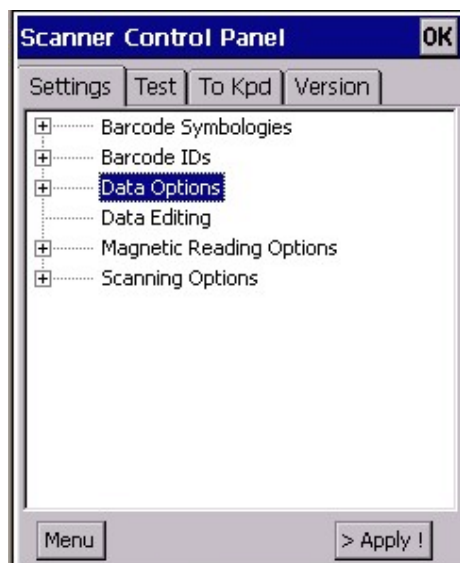
6. Tap "Barcode IDs". A list of barcode type is shown with their IDs in front.



7. Double tap the barcode type which you want to change ID. (Example: D: EAN13).
Change to other ID by scrolling the button.



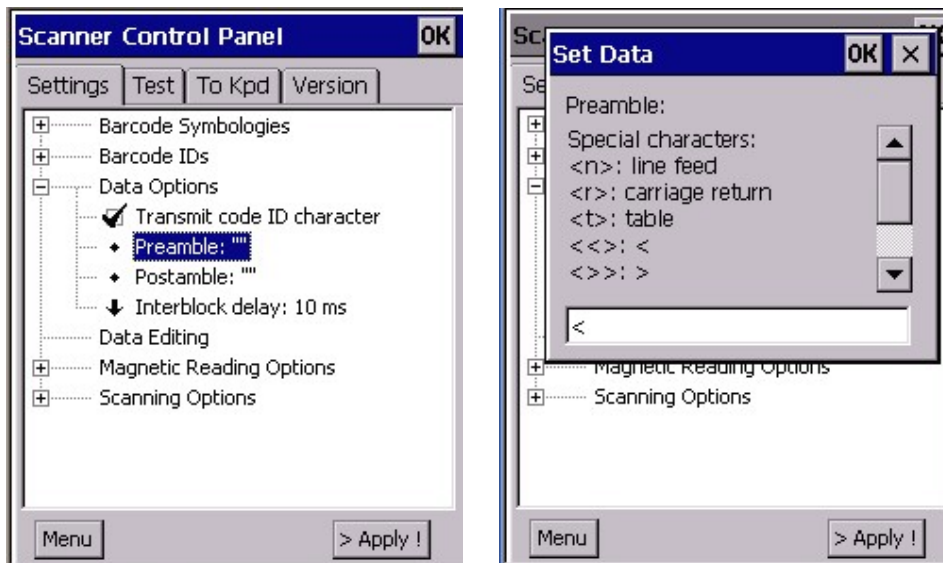
8. Tap “Data Options”.



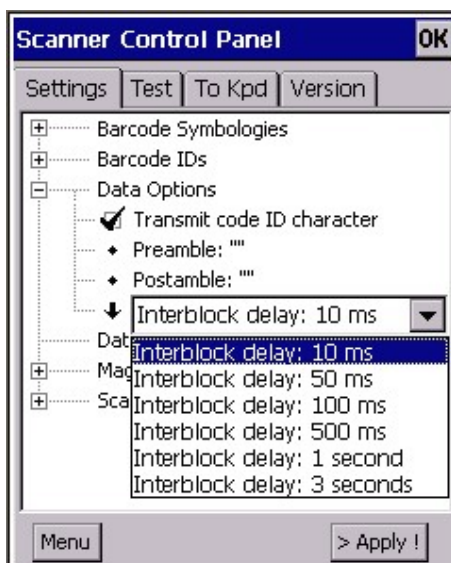
9. Tap “Transmit code ID character” if you want to transmit code ID.

10. Double tap “Preamble” or “Postamble” if you want to add them to the barcode.

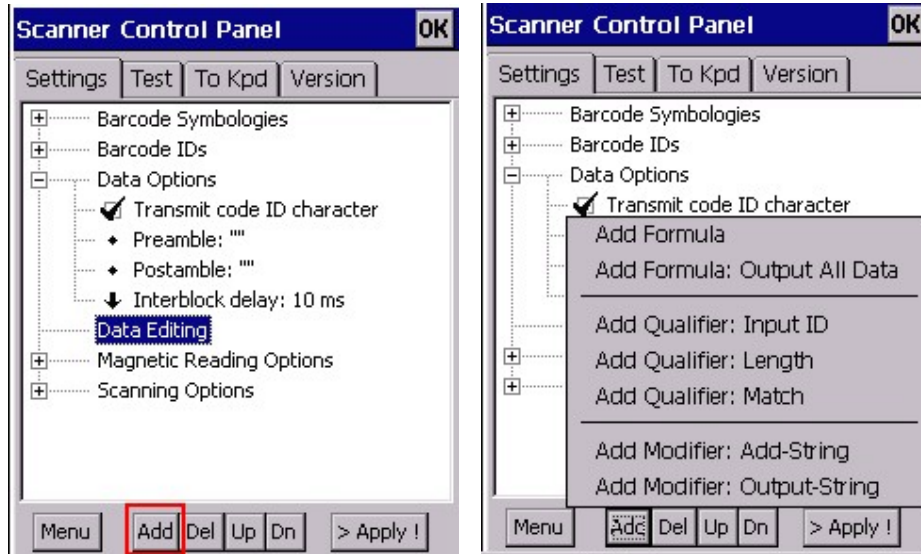
Key in the special character stated in the Set Data window. Tap “OK”.



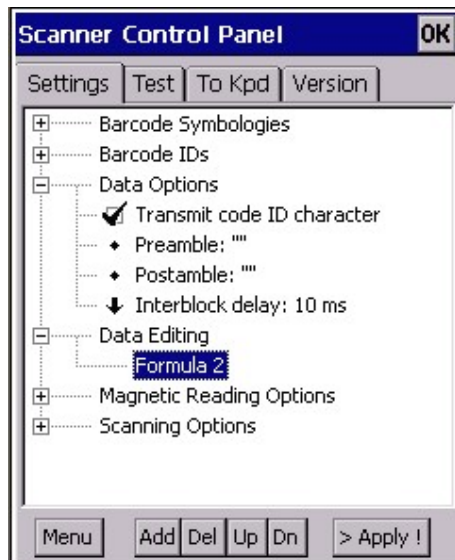
11. Double tap “Interblock delay”. Select the delay time from the drop down list.



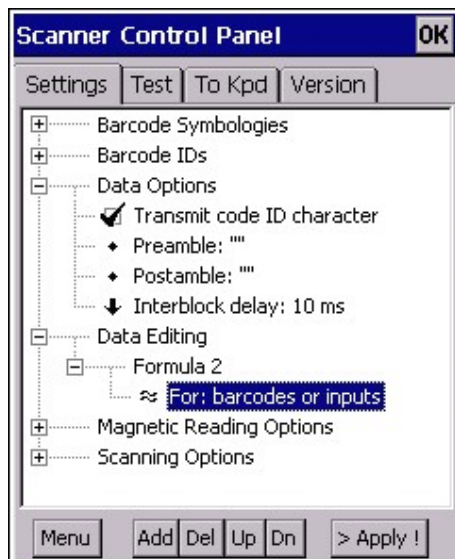
12. Tap “Data Editing”. Tap “Add” at the bottom. A menu will pop up.



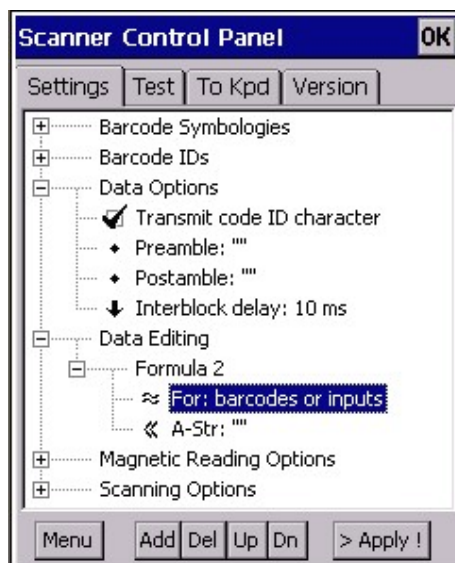
13. Select “Add Formula” or “Add Formula: Output All Data”. A formula will be added under “Data editing”.



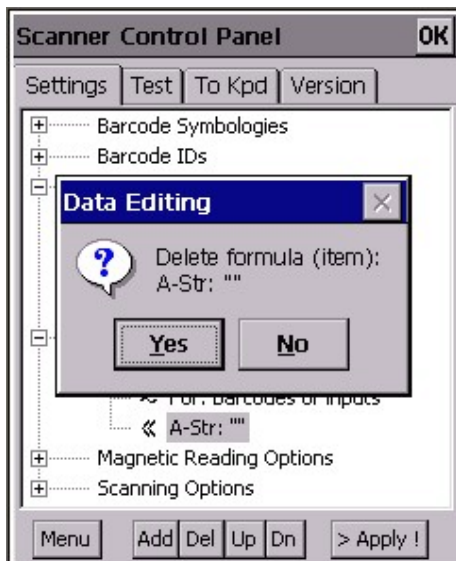
14. Tap “Formula 2”. Tap “Add” button. Select “Add Qualifier”.



15. Tap the qualifier you just added. Tap “Add” button. Select “Add modifier”.

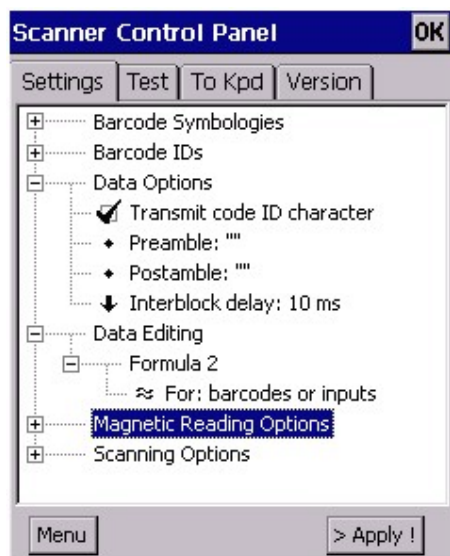


16. To delete a formula or qualifier or modifier, just tap it and tap “Del” button.

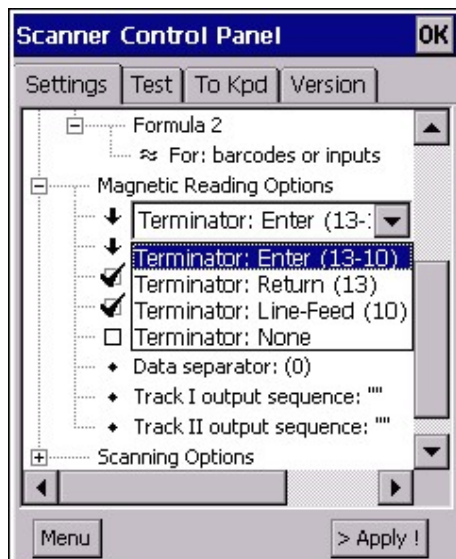


17. To add additional formula , just tap “Data Editing”, tap “Add” and select “Add Formula”.

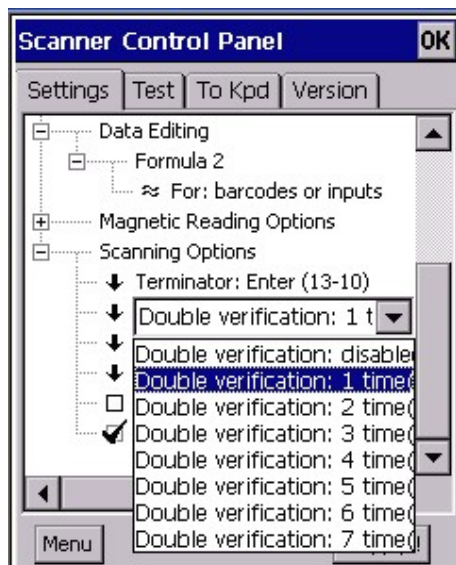
18. Double tap “Magnetic Reading Options”. (The effect will only work for PA960-MSR model).



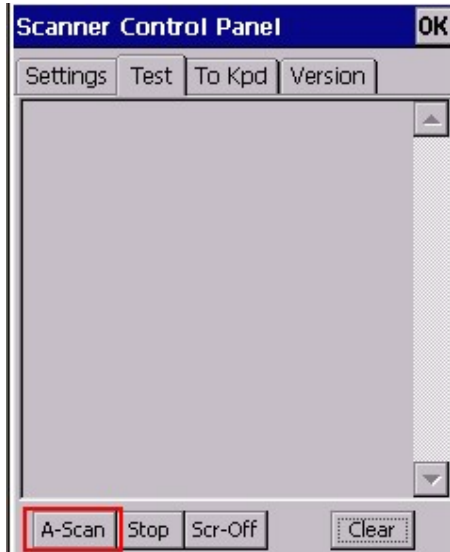
19. Double tap the options below “Magnetic Reading Options” to make settings.



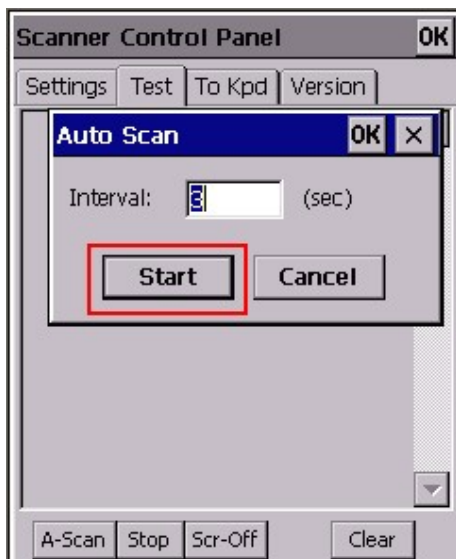
20. Tap “Scanning Options”. Double tap options below to make setting.



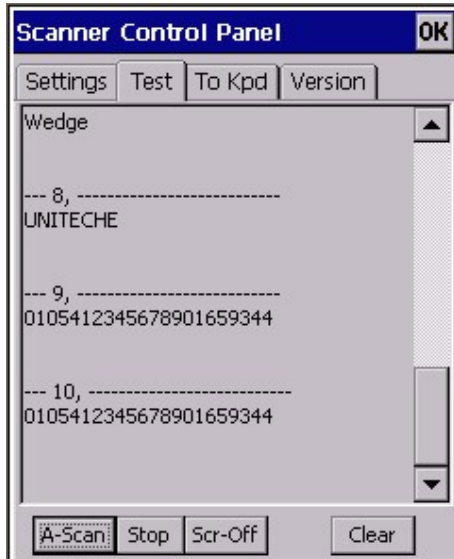
21. Under “Test” tab, tap “A-Scan” button at the bottom.



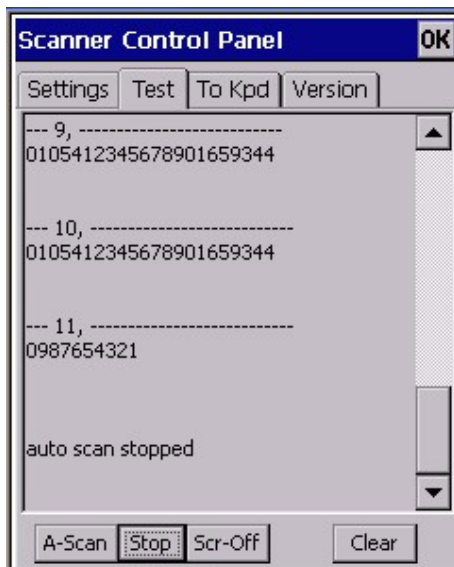
22. Set the interval time you want the laser to emit. (Ex: 3 seconds). Tap “Start”.



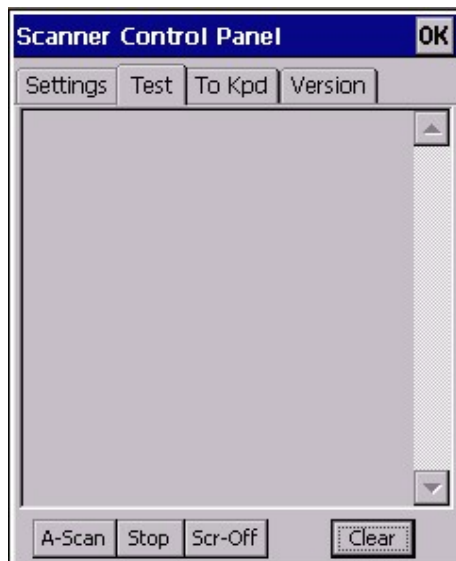
23. Laser emit every 3 seconds. Place the laser head towards to the barcodes. Barcode will be read and shown on the screen.



24. Tap “Stop” button. This will stop to emit the laser.

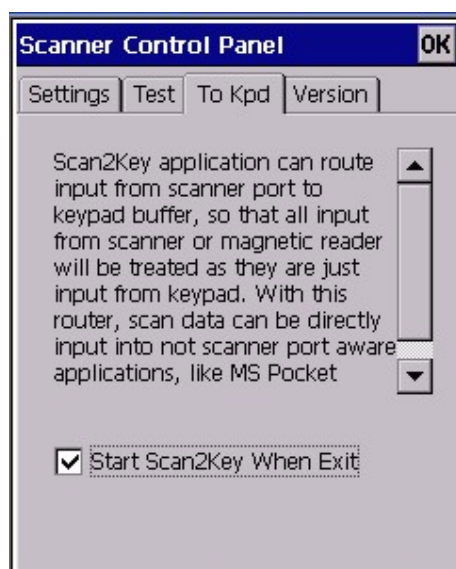


25. Tap “Clear” button. The screen of “Test” will be cleared.

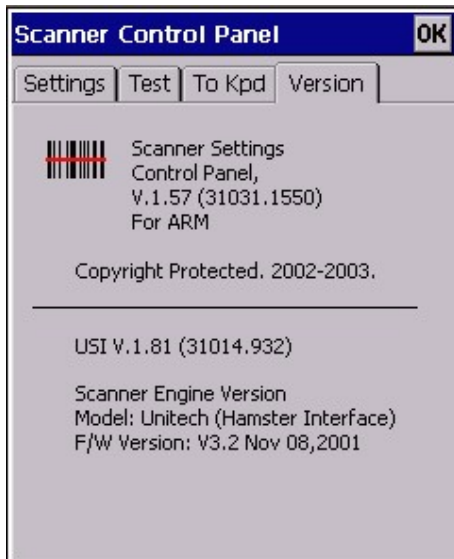


26. Under “To Kpd” tab, tick “Start Scan2key When Exit”. Then, tap “OK”.

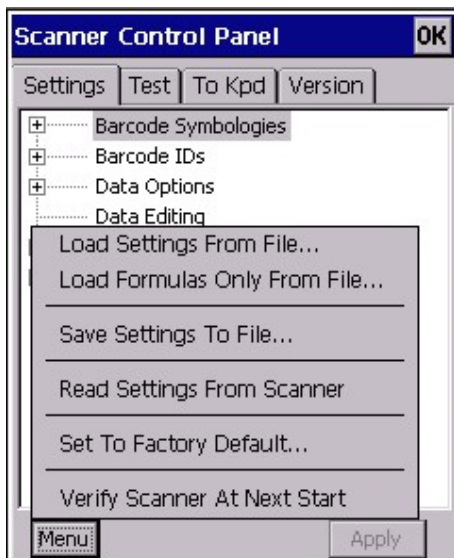
Scan2Key icon will appear at the task bar. (For the use of Scan2Key, please refer to chapter 2.8)



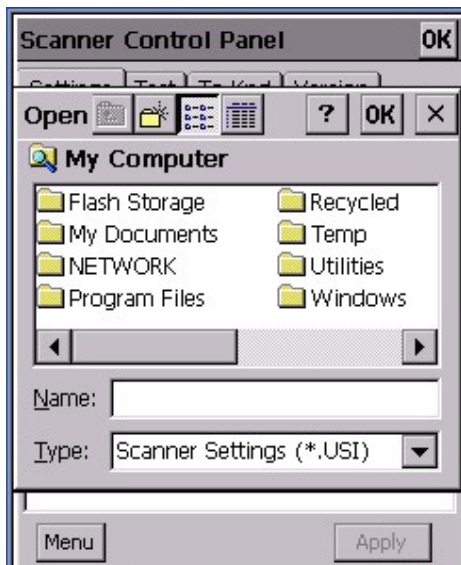
27. Tap “Version” tab, the screen will show the general information of Hamster decoder.



28. Back to “Settings” tab. Tap “Menu” at the bottom. You will see a selection menu pop up.



29. Select “Load Settings From File” or “Load Formulas Only From File”. Load the existing scanner settings / formula file. (If you have saved a settings / formula file before)



30. Select “Save Settings to File”. Save the current scanner setting as *.USI file.



31. Select “Set To Factory Default”. Tap “Yes”. The scanner setting will be reset to the original setting.



32. Select “Verify Scanner At Next Start”. The scanner will be verified next time you run “Scanner Settings”.

2.11 Virtual Keys

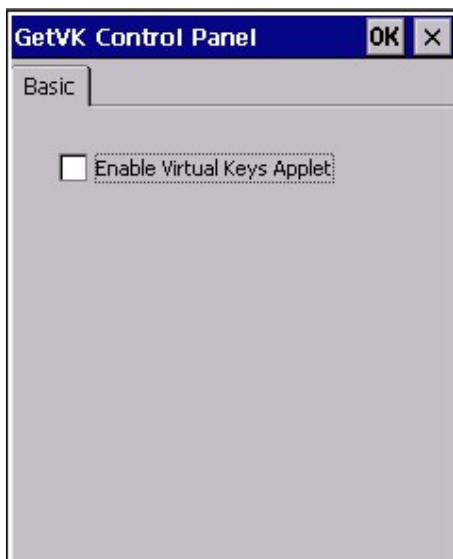
Path: Control Panel/Virtual Keys.exe

This tool allows you to enable/disable the alpha keys on the terminal keypad.

1. Tap “Virtual Keys”.



2. Uncheck “Enable Virtual Keys Applet”. Tap “OK”.



3. Open pocket word and test alpha keys. Press “alpha” key and press numeric key. The characters output are non-alpha keys.

4. Back to step 2. Tick “Enable Virtual Keys Applet”. Tap “OK”. The alpha keys are enabled again.

2.12 RegFuncKey

Path: My computer/Windows/RegFuncKey.exe

This tool allows you to re-define the function key.

For default value:

Func 6 = Task Manager

Func 7 = Scanner Setting

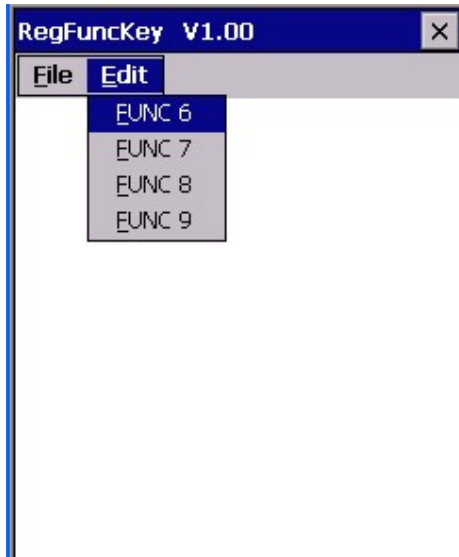
Func 8 = Power Management

Func 9 = Device Info

1. Double tap “REGFUNCKEY”.



2. Under “Edit”, select “FUNC 6”.



3. Tap "Browse". Select the application you want to be executed by Func 6.

4. Tap "Set".



5. Under "File", tap "Exit".



6. Press "Func" + "6". You should see the "Bootmode" windows pop up, as step 2 in chapter 2.1

7. You may repeat the above steps to re-define the Func 7, 8 and 9.

Chapter 3 Tools and Applications under “Windows”

Tools and Applications under “My Computer/Windows”

- 1. ActiveNet**
- 2. Aironet Client Utility**
- 3. Calibration**
- 4. MS DOS Prompt Command**
- 5. Load New Firmware**
- 6. MSTSC**
- 7. Net**
- 8. NICTT**
- 9. NICUPDATE**
- 10. pegterm**
- 11. pmail**
- 12. pvbload**
- 13. pword**
- 14. rapisrv**
- 15. rasdemo**
- 16. repllog**
- 17. Taskman**
- 18. visadm**
- 19. wceload**
- 20. WMAGS46**

3.1 ActiveNet

Path: My computer/Windows/ActiveNet.exe

This tool provide files synchronization facility between the terminal and your host (PC/notebook) via wireless network communication.

1. Under “Control panel” > “Communication” > Device Name, type a name for the device. (Example: WinCE-2)



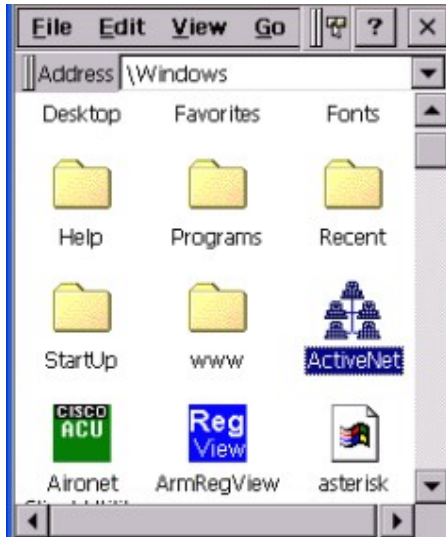
2. Tap “PC Connection”. Tap “Change connection”. Select “USB to PC”.



3. Connect the terminal with your PC by using USB communication cable.
4. Execute Microsoft Activesync on your host, make connection setting and get connected.
5. After connected, “Do you like to set up a partnership?” Select “Yes”. Click “Next”.



6. Give a name to the device. Example: WinCE-2, click “Next”.
7. Select Synchronization Settings. Check “Files”. Click “Next”. Setup complete.
8. On your terminal, insert your wireless LAN card and select “Obtain IP by DHCP”.
9. Setup the settings and WEP of wireless LAN card(For Cisco Aironet, please refer to Chapter 3.2)
10. Unplug the USB communication cable.
11. Under “Windows”, double tap “ActiveNet”.



12. Choose a method to connect to the selected desktop computer. Select “Network Connection”. Connect to <the host>. Tap “Connect”.

13. Activenet will connect terminal to Activesync on your host via wireless network and proceed the file synchronization.

14. To synchronize again, tap “Sync Now”.



15. Tap “Disconnect” to disconnect the communication.

3.2 Aironet Client Utility

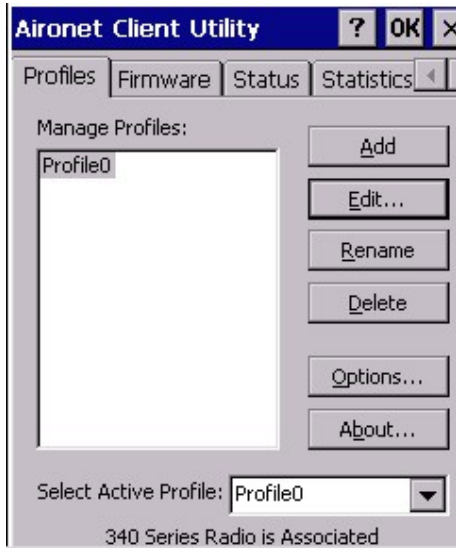
Path: My computer/Windows/Aironet Client Utility.exe

Aironet Client Utility is a utility tool for you to specify the SSID, WEP, speed and other setting while using Cisco Aironet wireless LAN card. This tool is not available if Cisco Aironet wireless LAN card is not inserted in the terminal or the card is not detected.

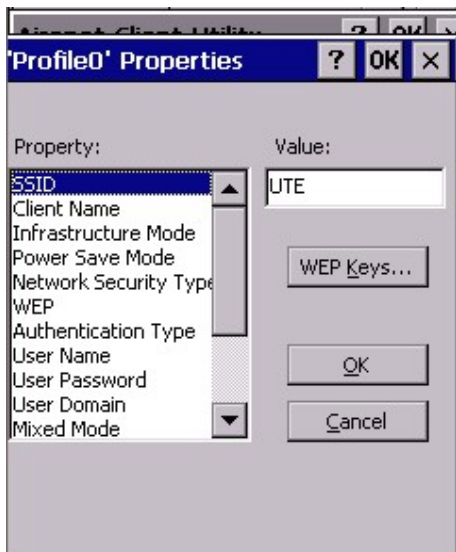
1. Insert Cisco Aironet wireless LAN card into the terminal.
2. System detected the card. Select “Obtain IP by DHCP”.
3. Double tap “Aironet Client Utility”.



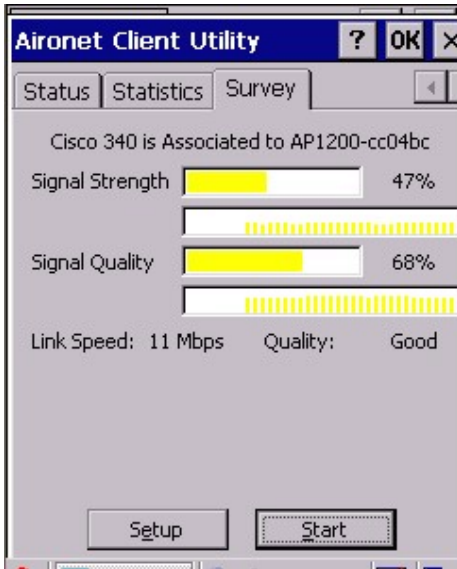
4. Under profiles, you will see profile0. Tap Edit. (Or Tap “Add” to add new profile)



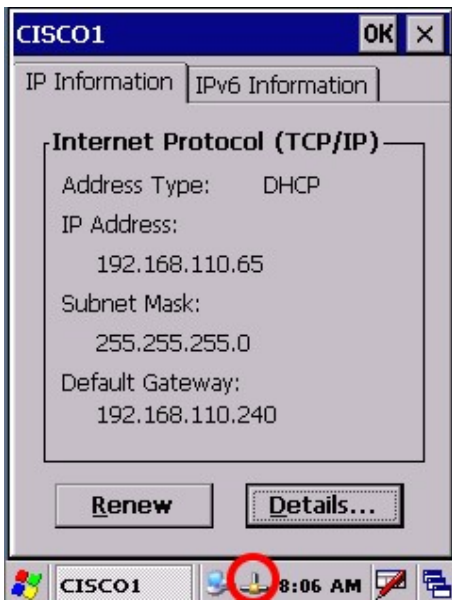
5. Select SSID, enter your SSID. Select power mode, enter “MAX PSP”. Select WEP, tap “Static WEP “. Then, enter your WEP key.



6. Under “Survey”, check the link status.



7. Under “IP information”, check if IP is connected. You can link to network.



3.3 Calibration

Path: My computer/Windows/Calibration.exe

This tool allows you to do calibration while the original screen calibration is no longer accurate.

1. Double tap “Calibration”.



2. Use the stylus to touch the “+” (Center, Top left, Bottom left, Bottom right, Top right), then press “Enter” key.

Carefully press and briefly hold stylus
on the center of the target.
Repeat as the target moves
around the screen.
Press the Esc key to cancel.

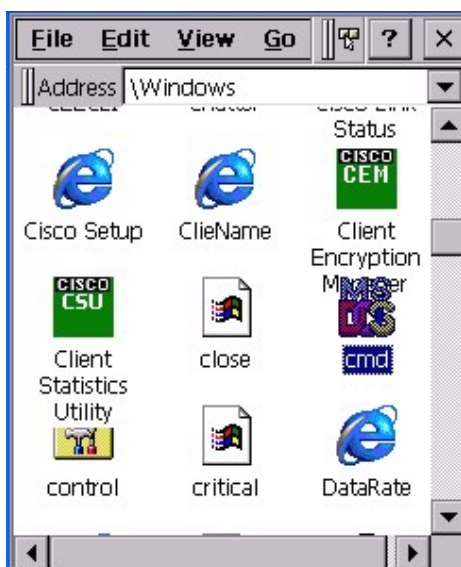


3.4 MS DOS Prompt Command

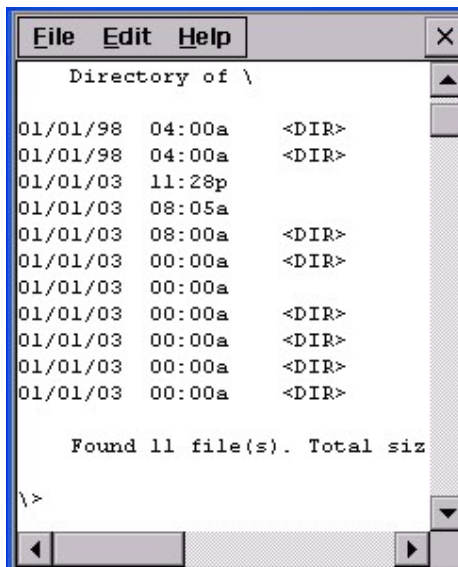
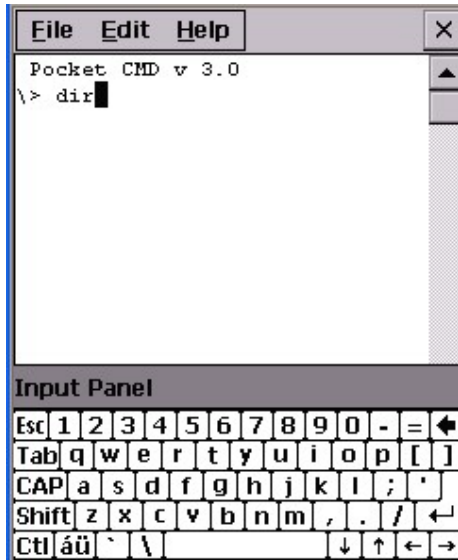
Path: My computer/Windows/cmd.exe

This tool allows you to execute DOS command.

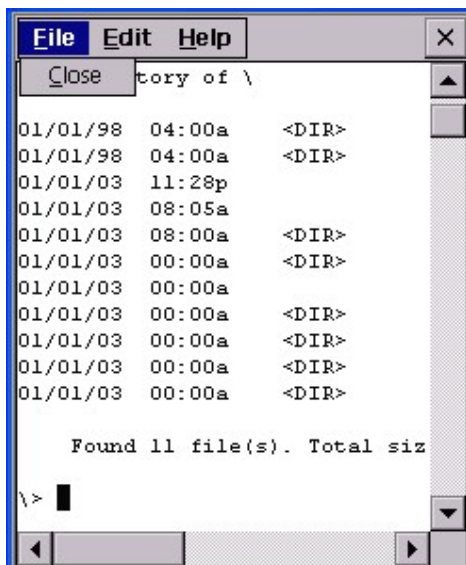
1. Double tap “cmd”.



2. On the DOS prompt, type some command (ex: dir)



3. On "File" menu, select "Close" to exit.



3.5 Load New Firmware

Path: My computer/Windows/Load New Firmware.exe

This tool allows you to update the latest version of Cisco driver whenever it is necessary. (Must insert Cisco Aironet Wireless LAN card)

1. Double tap "Load New Firmware".



2. Tap “Select Firmware”. Select the Cisco firmware. The driver will be updated.



3. Tap “OK” or “Cancel” to exit.

3.6 MSTSC

Path: My computer/Windows/mstsc.exe

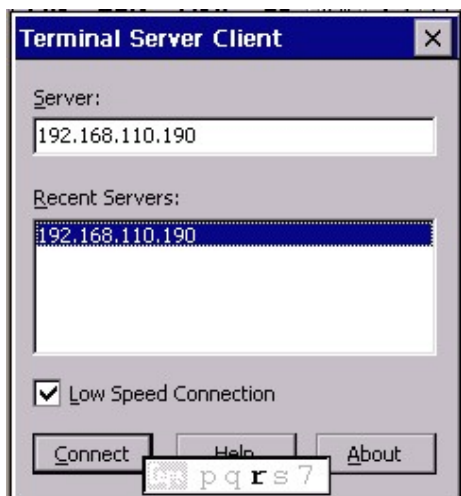
This tool allows multi user to telnet and login to a RDP host server. (Your terminal must connect to the network)

*Note: Must install RDP in the host first.

1. Double tap “mstsc”.



2. Key in the IP address of the RDP host in “Server” field. Tap “Connect”.



3. Terminal login to RDP host.



3.7 Net

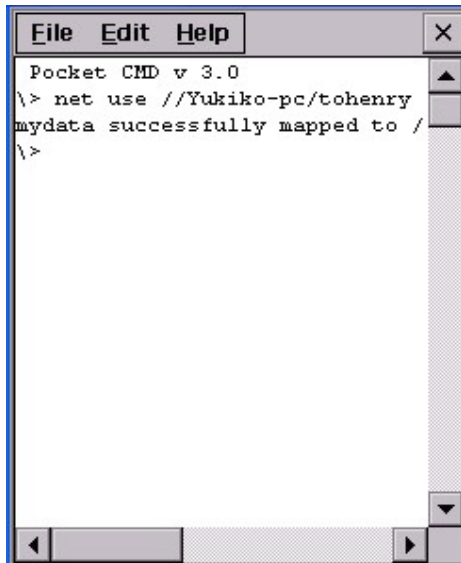
Path: My computer/Windows/Net.exe

This is a MS Dos command that allows you to share data/files with any computer in the network. (Your terminal must connect to network)

1. On your PC/notebook, share a folder to the network.
2. Execute MS DOS prompt command.
3. On the DOS prompt, type the command:

Net Use //<PC's Name>/<Shared Folder Name> <Terminal folder's name>

For Terminal folder's name, you can specify any name you like.

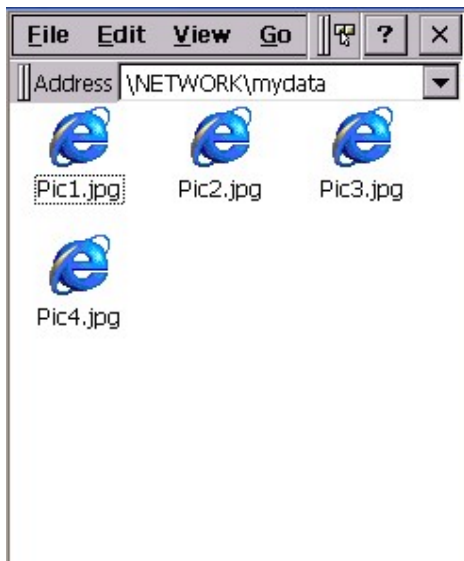


```
File Edit Help
Pocket CMD v 3.0
\> net use //Yukiko-pc/tohenry
mydata successfully mapped to /
\>
```

4. In “My Computer”, tap “Network”. You will see a terminal folder.



5. Open the folder. You will see the files in the folder. The content is the same as the shared folder in your PC/notebook.



3.8 NICTT

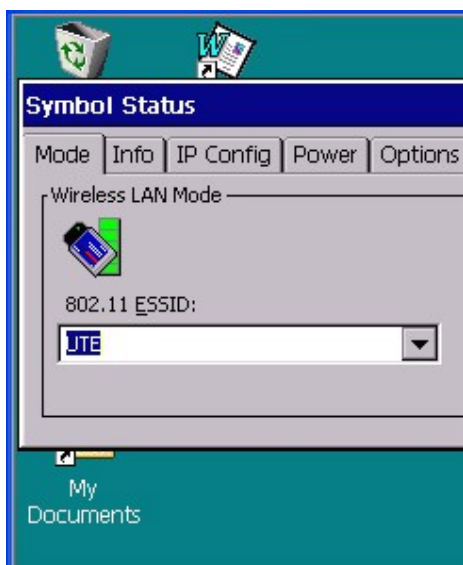
Path: My Computer/Windows/NICTT.exe

This tool is a setting application for Symbol wireless LAN card. Once you insert Symbol wireless LAN card in your terminal, this application will allow you to set the SSID, speed, WEP, infrastructure etc...

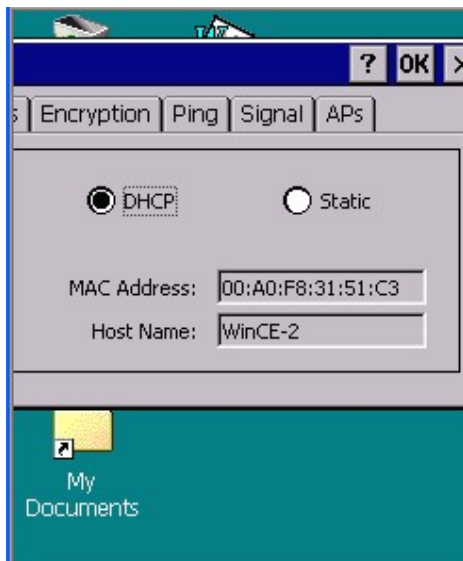
1. Insert Symbol wireless LAN card. You will see icon appear at task bar.



2. Tap the icon. Symbol Status window pops up. Under “Mode”, key in the 802.11ESSID. Specify the operating mode.



3. Under “IP Config”, specify either “DHCP” or “Static” IP address.



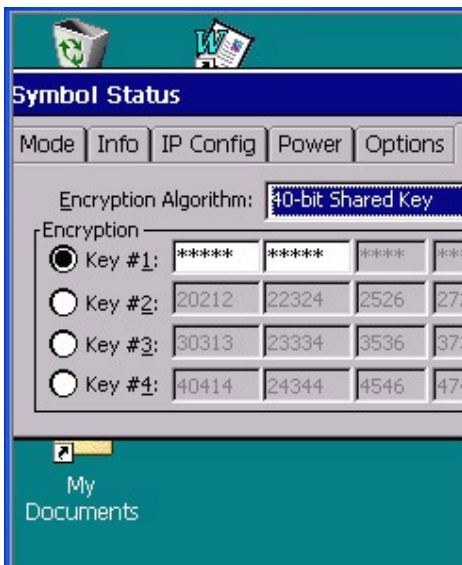
4. Under “Power” tab, specify “Radio Transmission Power” and “Automatic/Manual Power Saving Mode”.



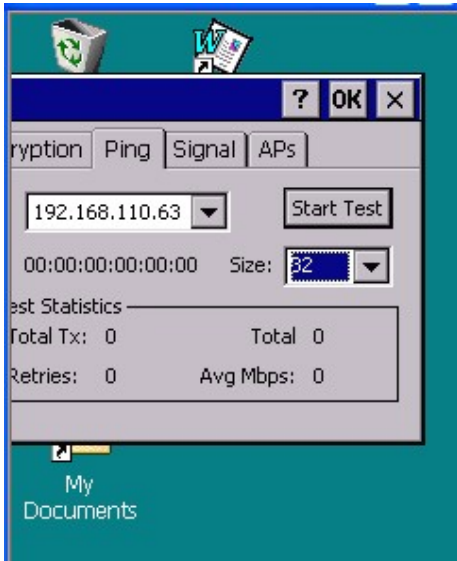
5. Under “Options”, tick the options as you want.



6. Under “Encryption”, key in the WEP key.



7. Under “Ping” tab, you can key in the IP address of the host you want to ping , tap “Start Test”.



8. Under “APs”, Tap “Refresh”.

9. Warm start terminal.

10. Your terminal is connected to network by Symbol Wireless LAN card.

3.9 NICUPDATE

Path: My computer/Windows/NICUPDATE.exe

This tool allows you to update the Symbol wireless LAN card driver. (You must insert Symbol Wireless LAN Card in the terminal)

1. Double tap “NICUPDATE”.



2. Under “Firmware Filename”, browse to retrieve the Symbol firmware file.

3. Tap “Update” button to update driver.

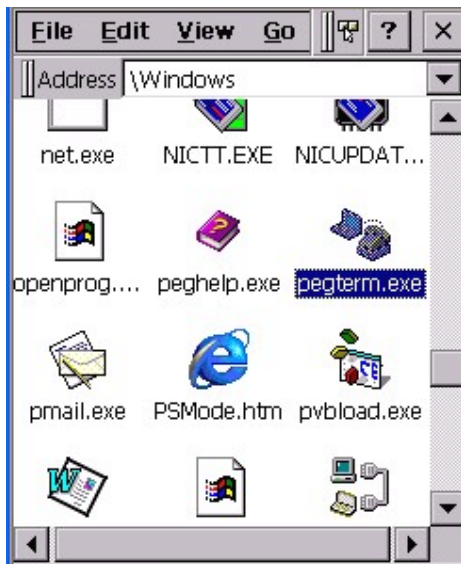


3.10 Pegterm

Path: My Computer/Windows/Pegterm.exe

This tool allows you to make a session when you access the network by using modem card or when you want to dial to the phone by using GPRS card.

1. Insert the modem card or GPRS card.
2. Double tap “pegterm”.



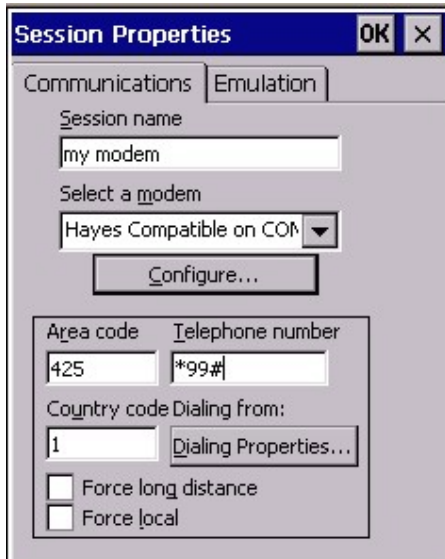
3. Tap “Make New Session”.



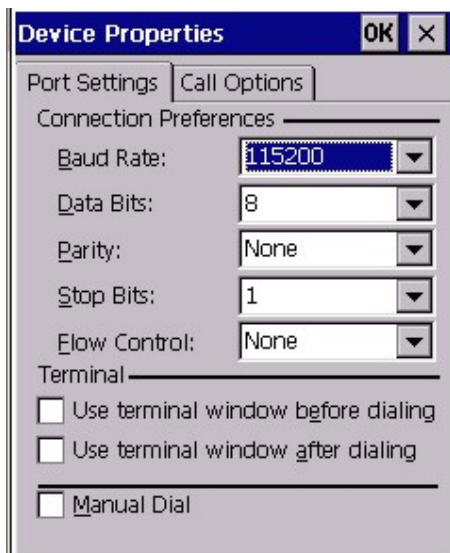
4. Under “Communication”, Session name: <Enter a name>

5. Select a modem: <Select the modem card you are using>

6. Telephone Number: <Enter the phone number>



7. Tap “Configure”. Set the baud rate, stop bits, parity and so on.

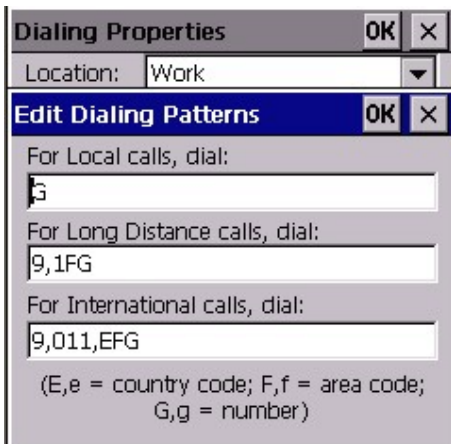


8. Tap “OK” and exit configure window.

9. Tap “Dialing property”. Tap “Edit”.

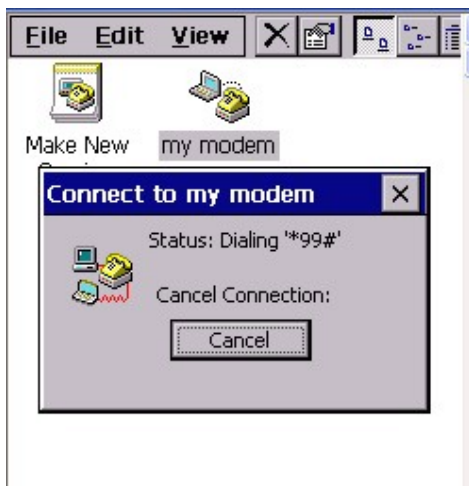


10. Specify the local calls, long distance calls etc. Tap “OK” to exit.



11. Tap “OK” to exit pegterm.

12. Start to connect.



3.11 Pmail

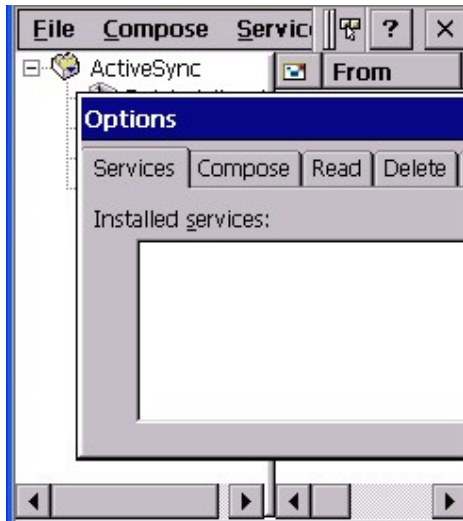
Path: My Computer/Windows/pmail.exe

This is an email applications for you to sent/receive email by using the terminal.
(Must connect the terminal to the network)

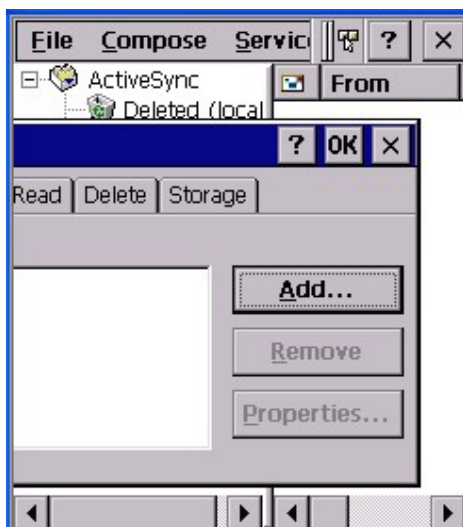
1. Double tap “pmail”.



2. In “Service” menu, select “Options”.



3. Under “Service” tab, tap “Add”.



4. Select the service type. Tap “OK”.



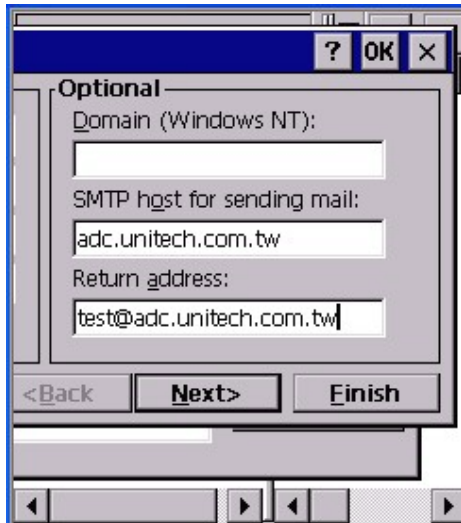
5. For connection, select type of your connection. (If you are using wireless LAN card, select “Network Connection”.)

6. Key in the Pop3 host.

7. Enter user ID and password.



8. Key in the SMTP host and return address. Tap “Next”.



9. Tap “Next”, “Next”. Tap “Finish”.

10. Pmail is ready to be used for email sending.

3.12 pvbload

Path: My Computer/Windows/pvbload.exe

This tool allows you to load a VB program in your terminal.

3.13 Pword

Path: My Computer/Windows/pword.exe

This tool allows you to do words editing, like MS word.

3.14 rapisrv

Path: My Computer/Windows/rapisrv.exe

This is an application that enables a host computer application to execute an application programming interface on the terminal. You can use Rapisrv.exe with Repllog.exe if your Windows CE configuration does not include Remnet.exe.

3.15 rasdemo

Path: My Computer/Windows/rasdemo.exe

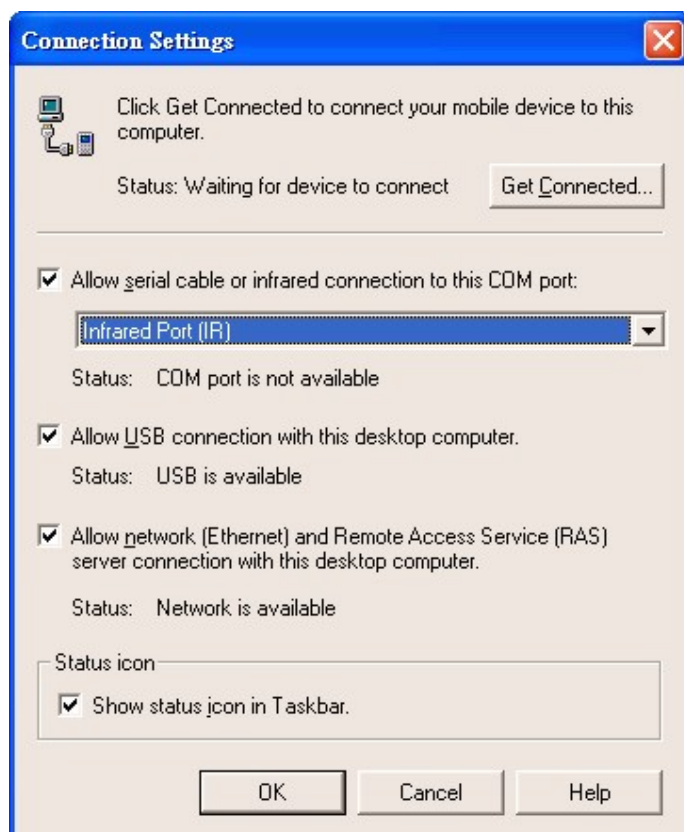
This is a sample communications application, Rasdemo.exe, creates a phone-book entry on the terminal and attempts to connect with the specified RAS server.

3.16 repllog

Path: My Computer/Windows/repllog.exe

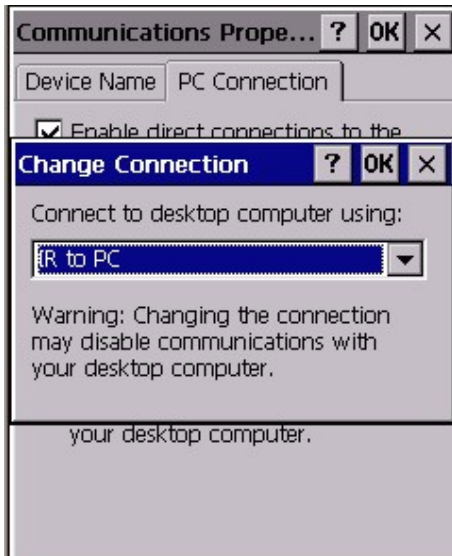
Repllog is a tool to enable RS232/IrDA communication.

1. On your PC, open ActiveSync. Under “File” menu, select “Connection Settings”. Allow Serial cable or infrared connection to this com port, select “Infrared Port”.



2. On the terminal, control panel/Communications/PC Connection/Change

Connection: IR to PC.



3. Open MS Activesync on your PC.
4. Place the IrDA port of the terminal towards the IrDA port of your PC.
5. On the terminal, double tap "repllog.exe".



6. Terminal and PC are connected by IrDA.

3.17 Taskman

Path: My Computer/Windows/TASKMAN.exe

This tool shows the tasks that are running currently.

1. Double tap "TASKMAN".



2. Active tasks are shown. Select a task you want to terminate, tap "End Task".



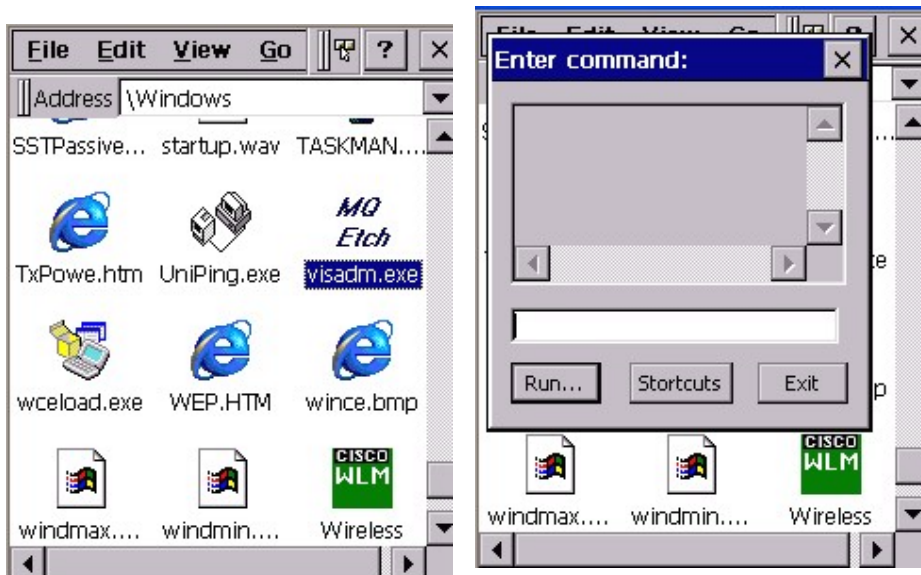
3.18 visadm

Path: My computer/Windows/visadm.exe

This tool supplies registration commands on its command line and redirect output to the file when you want to use MSMQADM.EXE on WIN CE. VISADM.EXE is a dialog box with an edit control that allows users to input MSMQADM commands as they would appear on the command line and view the output in a text box above. There is also a Shortcuts dialog box that automates several frequently used commands and allows you to view the MSMQ log file and MSMQ-specific registry entries.

1. To install MSMQ using the VISADM Utility

Run VISADM.EXE.



1. From the **Shortcuts** menu, choose **Install**.
2. From the **Shortcuts** menu, choose **Register** to create the registry entries.



3. Reboot the computer.
4. Test your installation.

Other Commands Available from the Visadm Shortcuts Menu

- The **Stop** command stops the MSMQ driver after it has been installed.
- The **Start** command restarts the MSMQ driver.

- The **Log** command displays the contents of the MSMQ log file.
- The **Verify** command interprets registry settings and produces readable information about MSMQ installation.

You can customize your installation options by using direct MSMQADM commands from the VISADM command prompt. Type the command in the edit box exactly as if you were supplying command-line arguments to MSMQADM and press the **Enter** key to execute. The output appears in the read-only dialog box that is displayed above the edit box.

3.19 wceload

Path: My computer/Windows/wceload.exe

This tool is exist to execute *.cab file.

3.20 WMAGS46

Path: My Comnputer/Windows/WMAGS46.exe

This is the driver of Lucent Orinoco Wireless LAN card. It allows you to make the setting for the wireless connection.

1. Insert Lucent Orinoco Wireless LAN card into the terminal.
2. Select "Obtain IP address via DHCP".
3. An icon (Lucent driver) appear on the task bar. Tap the icon.



4. Double tap “Edit Wireless Profile”.



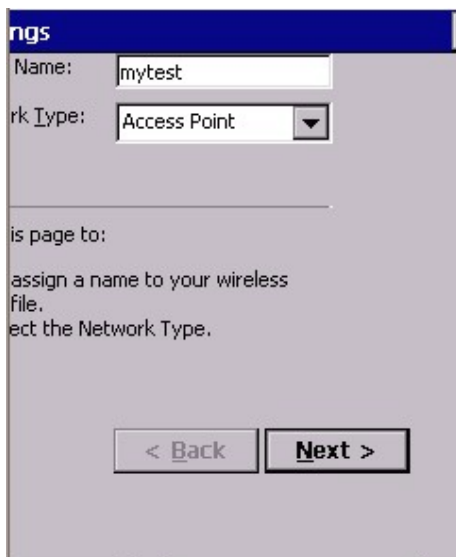
5. Tap “Add”.



6. Under “Profile Name”, enter a name. (Ex:mytest)

7. For network type, select “Access Point”.

8. Tap “Next”.



9. Specify network name. Tap “Next”.

Identify/Edit Configuration Profile

Network Name: LUTE

Scan

Identify the Network Name of the wireless network to which you wish to connect your computer.

< Back Next >

10. Tick “Enable Data Security”. Enter WEP key. Tap “Next”.

Settings

Enable Data Security

Use Alphanumeric Characters

Use Hexadecimal

Key 1: *****

Key 2:

Key 3:

Key 4:

Key 1

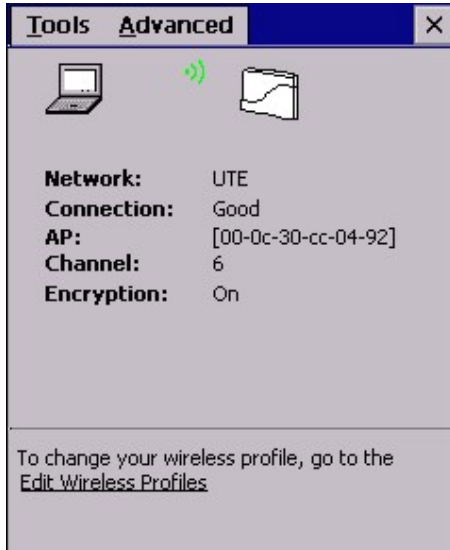
< Back Next >

11. Determine to enable card power on or off. Tap “Finish”.



12. Tap “OK”. Lucent Card is ready for wireless connection.





13. Tap "Tool" > "Version Info", the information of the utility and driver is shown.

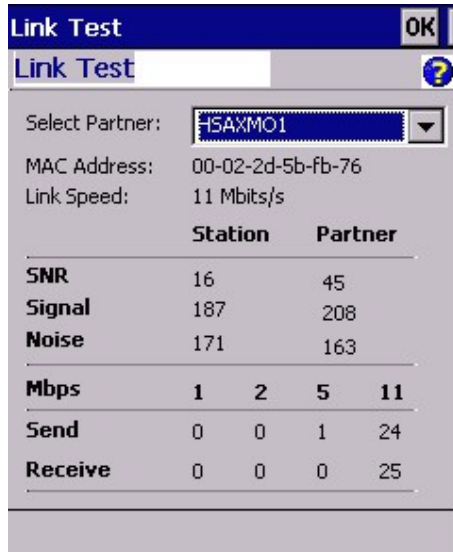


14. Select/deselect "Load/unload automatically".

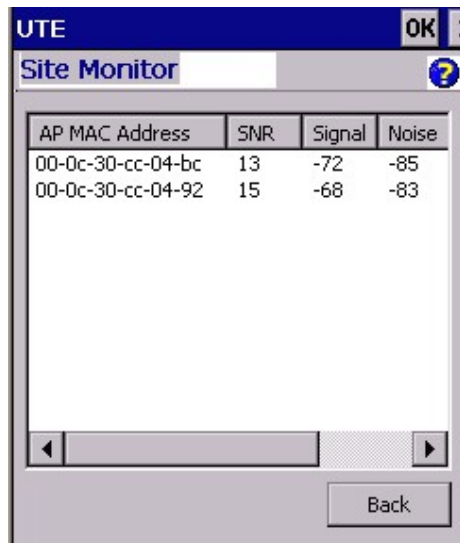
15. Select/Deselect "Suspend While Connected". If select "Suspend While Connected", the terminal will be suspend according to the time set in suspend mode even if the RF connection is on. If deselect "Suspend While Connected", the terminal will not be suspend while the RF connection is on.

16. Select “Disable Radio” to disconnect RF connection. (select “Enable Radio” to connect the RF)

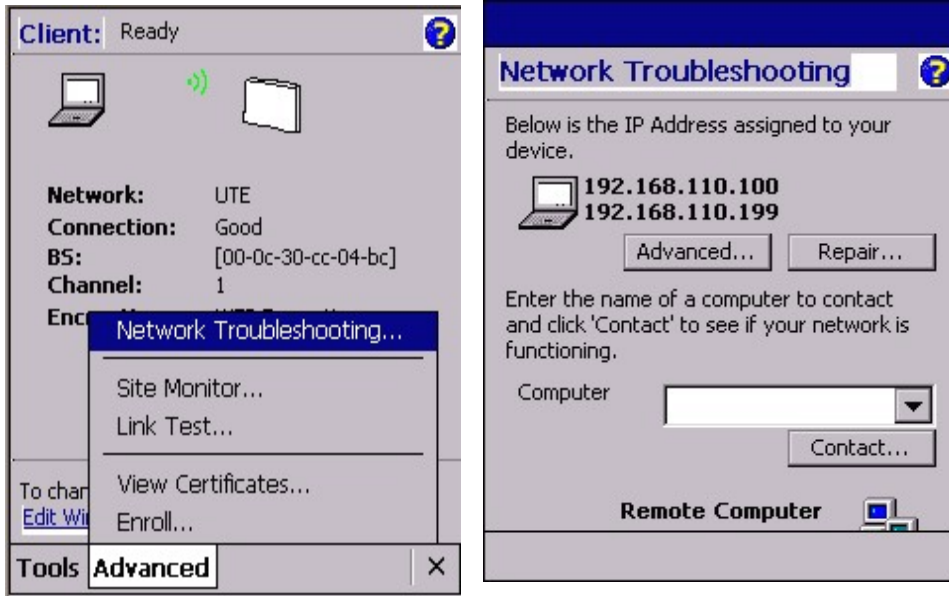
17. Select “Advanced” > “Link Test”, users can check the link of RF.



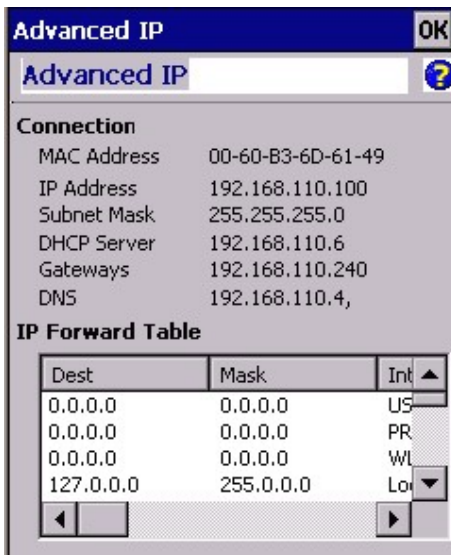
18. Select “Advanced” > “Site Monitor”, tap “Open”, the user can check signal strength.



19. Tap “Advanced” > “Network Troubleshooting”. You may check your current IP.



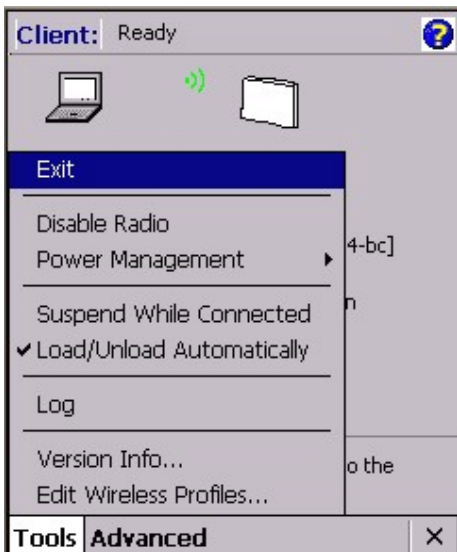
20. Tap “Advanced” to check detail IP address or tap “Repair” to renew IP.



21. You may communicate with a remote computer by entering the name of that computer , then tap “Contact”.



22. Tap “Tool” > “Exit” to close WMAGS46.



Chapter 4 Control Panel

Settings under “Control Panel”

- 1. Communications**
- 2. Date/Time**
- 3. Display**
- 4. Input Panel**
- 5. Keyboard**
- 6. Mouse**
- 7. Network Configuration**
- 8. Password**
- 9. Power**
- 10. Regional Settings**
- 11. Stylus**
- 12. System**
- 13. Volume & Sounds**

4.1 Communications

Path: Start/Settings/Control Panel/Communications

This setting allows you to set the device name and specify which type of communications you want to set for the device to communicate with the host.

1. Double tap “Communications”.

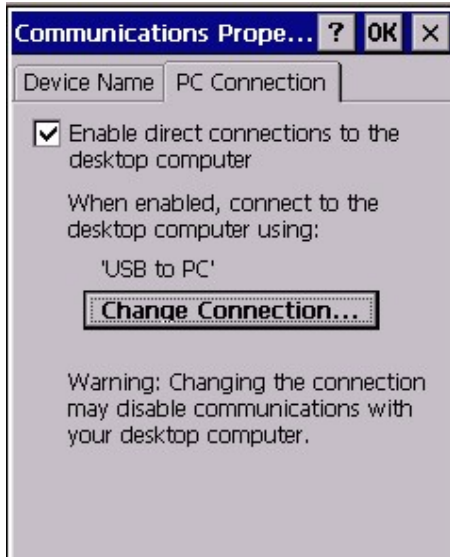


2. Under “Device Name” tab, specify device name and the description.



3. Under “PC Connection”, tick “Enable direct connections to the desktop computer”.

4. Tap “Change Connection”.



5. Select the type of communication that you connect the terminal to your host.

Example:

If you use RS232 cable, you may select “Desktop@57600” or “Desktop@38400” .

If you use USB cable, please select “USB to PC”.

If you connect by infra red, please select “IR to PC”.



4.2 Date/Time

Path: Start/Settings/Control Panel/ Date / Time

This is the system date and time. You may set the date and time for the system.

1. Double tap the date/time.



2. Set the date from the calendar and set the time. You may select the time zone too. Then, click "Apply".



4.3 Display

Path: Start/Settings/Control Panel/Display

This setting allows you to set the style of the windows background, the color and pattern of windows and determine the backlight off time.

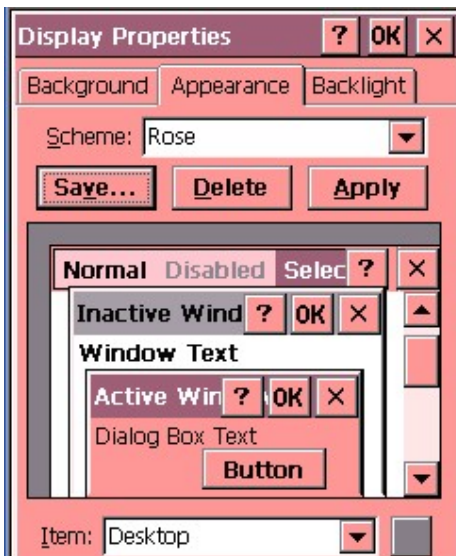
1. Double tap "Display".



2. Under “Background” tab, for “Image”, select the background name from the drop down list. You may tap “Browse” to retrieve any bitmap file for background. Tap “OK”.



3. Under “Appearance”, for “scheme”, select the scheme from the drop down list.
4. For “Item”, select the item that you want to apply the scheme on.
5. Tap “Apply”.
6. You may also rename the scheme by tapping “Save” button.
7. To delete a scheme, tap “delete”.



8. Under “Backlight” tab, tick “Turn off backlight when using battery power and device is idle for more than X minutes”. Specify the time.

This will turn off (suspend) backlight of the terminal after it has not been operated for X minutes to save the battery power. (Provided that the terminal is used with the battery).

9. Tick “Turn off backlight when using external power and device is idle for more than X minutes”. Specify the time.

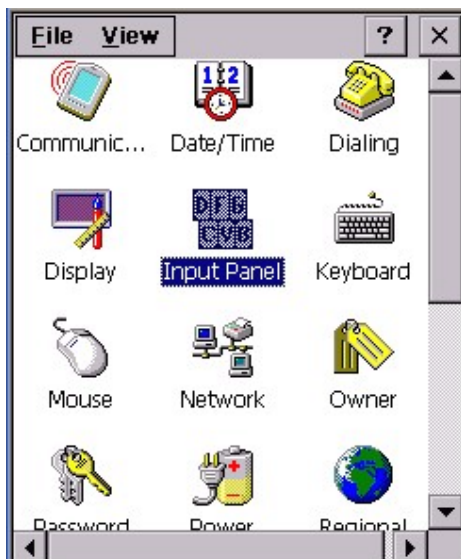
This will turn off (suspend) backlight of the terminal after it has not been operated for X minutes to save the battery power. (Provided that the terminal is used with the power adapter).

4.4 Input Panel

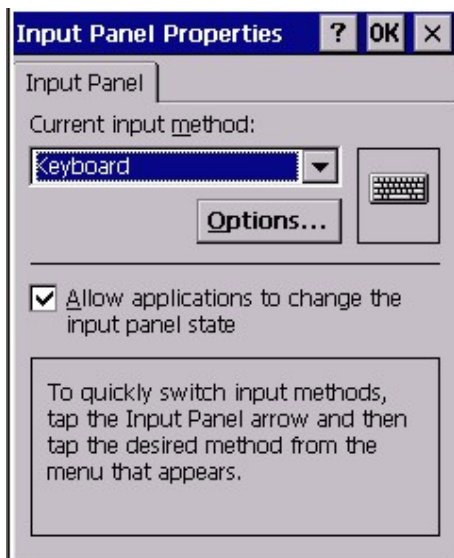
Path: Start/Settings/Control Panel/Input Panel

This setting is to specify the input method and the keyboard style of the software keyboard.

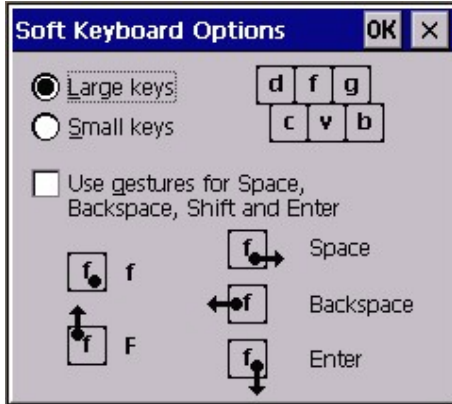
1. Double tap “Input Panel”.



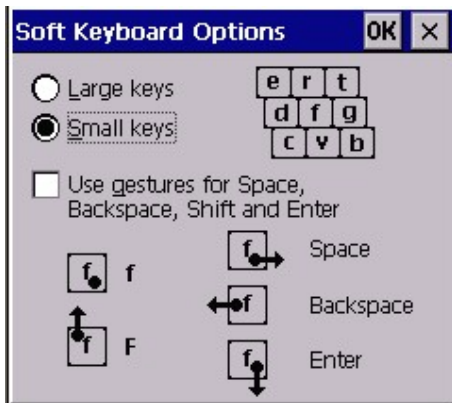
2. For “current input method”, select the input method you prefer. Tap “OK”.



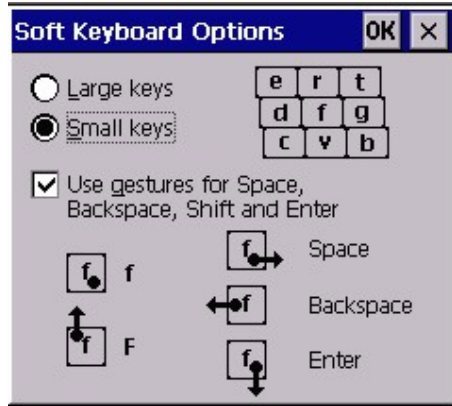
3. Tap “Options”. You may specify the large keys or small keys. For Example, select “Large keys”. Tap “OK”, “OK”.



4. For Example, select “Small keys”. Tap “OK”, “OK”.

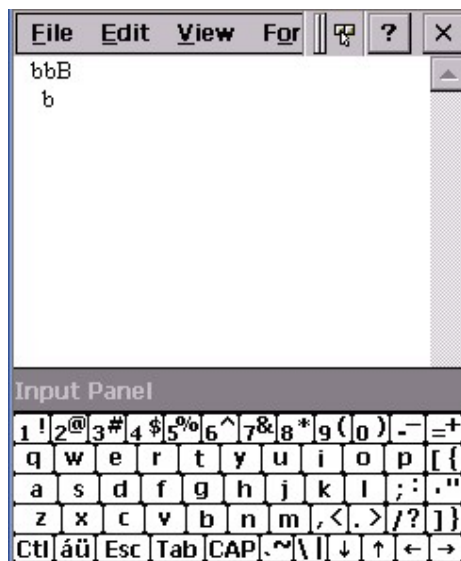


5. You may use gesture so that you can use the stylus to slide the software key to indicate the main key and space, backspace, enter key and shift key. Tick “Use gestures for Space, backspace, Shift and Enter. Tap “OK”, “OK”.



6. Open pocket word. Tap the software keyboard. Tap a key and slide upwards.

You should see the “Shift” key value. For example, Tap “b” key and slide upwards will return “B”. You may try to tap the key and slide downwards, to left side and right side to see the effect.



4.5 Keyboard

Path: Start/Settings/Control Panel/Keyboard

This setting allows you to specify the behavior of the terminal keypad. (Hardware keyboard).

1. Double tap “Keyboard”.



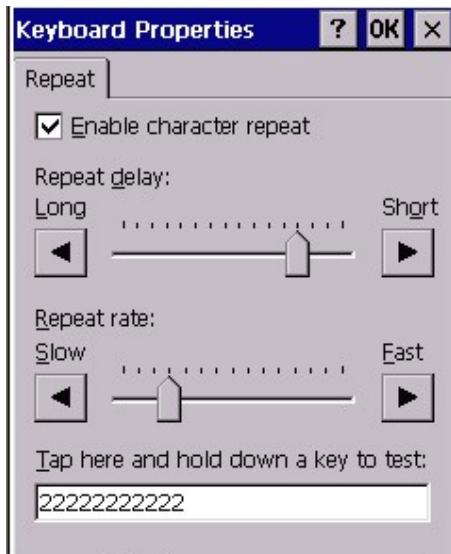
2. Tick “Enable character repeat”.

3. Adjust the repeat delay and repeat rate.

4. Place the cursor in the field of “Tap here and hold down a key to test”.

5. Press and hold a key on the keypad.

6. You should see the character is repeated until you release the key.

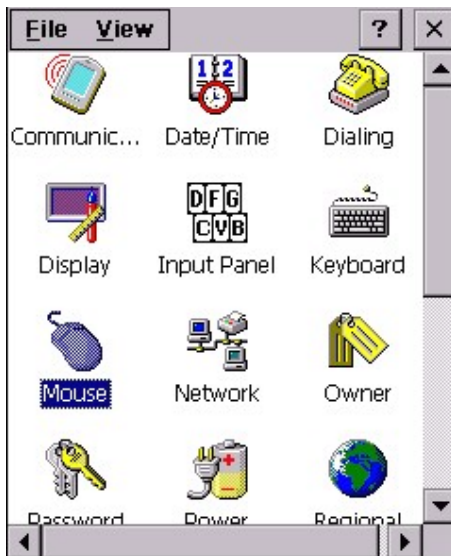


4.6 Mouse

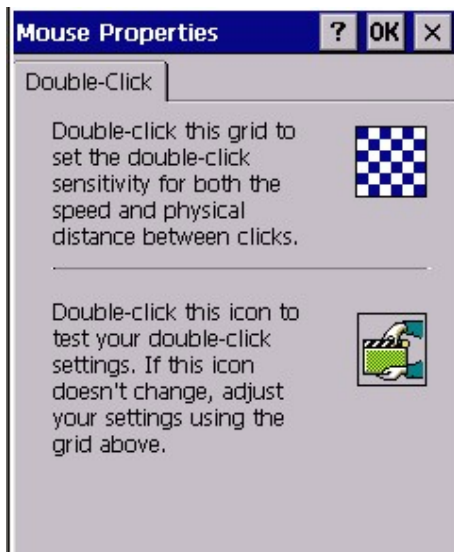
Path: Start/Settings/Control Panel/Mouse

This setting allows you to adjust the tapping sensitivity.

1. Double tap “Mouse”.



2. Double tap the grid. Then, double tap the icon to test.

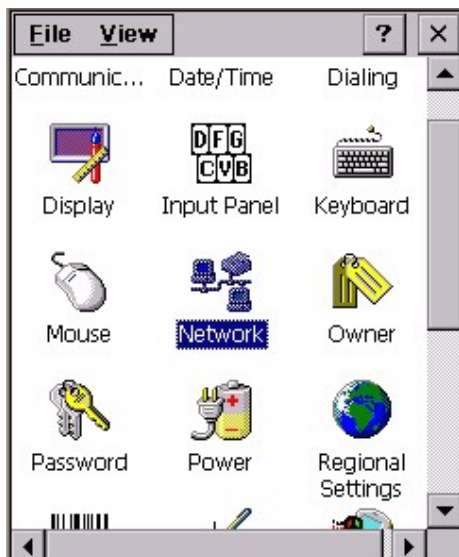


4.7 Network Configuration

Path: Start/Settings/Control Panels/Network

This setting is to configure the network setting by specifying the network adapter, network identification, IP address and server.

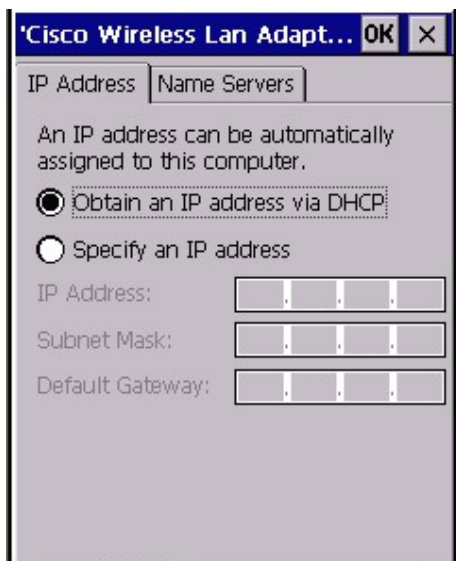
1. Double tap "Network".



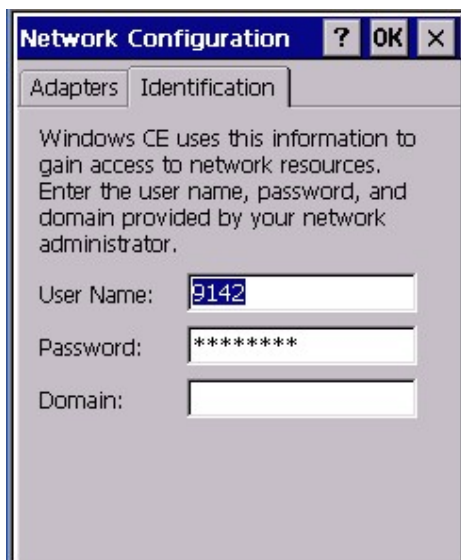
2. Under “Adapters”, select the network adapter you are using. Tap “OK”.



3. Tap “Properties”. Select either obtain IP address via DHCP or specify an IP address.



4. Under "Identification", key in the user name and password.



4.8 Owner

Path: /Start/Settings/Control Panel/Owner

This settings is to define the owner of this terminal, set the network ID etc.

1. Double tap “Owner”.



2. Key in the name of the owner, company and the address of the company. Check “Display owner identification”. Tap “OK”. The system will display the owner identification after suspend and power on.



3. Under “Notes”, Key any message and check “Display Owner Notes”. Tap “OK”. System will display the notes after suspend.

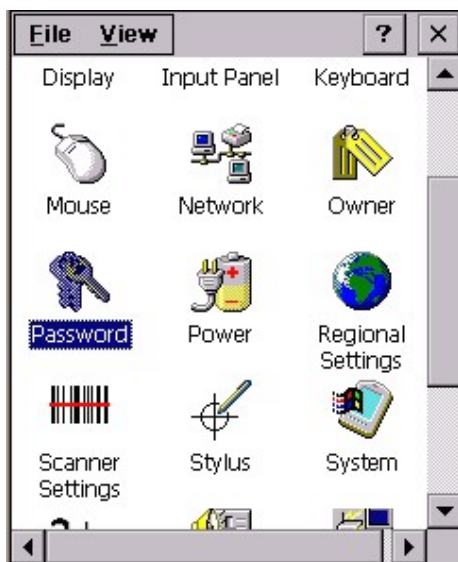


4.9 Password

Path: Start/Settings/Control Panel/Password

This setting is to protect the terminal from other users to access the windows by setting a unique password.

1. Double tap "Password".



2. Key in your password twice. Tick “Enable password protection at power on”.



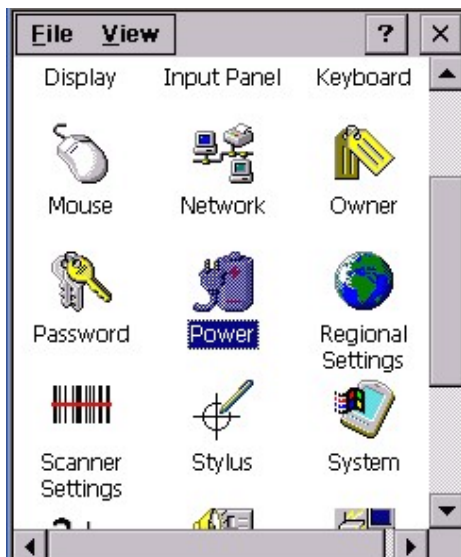
3. Warm start your terminal. Enter your password to login.

4.10 Power

Path: Start/Settings/Control Panel/Power

This setting is to show the power voltage of the batteries, besides allow you to suspend the terminal after a time interval to save the power.

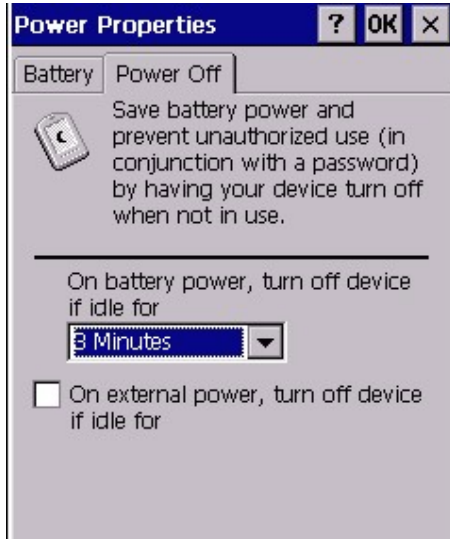
1. Double tap “Power”.



2. Under “Battery” tab, the screen show you the status and voltage of main battery and backup battery.



3. Under “Power off”, for “On battery power, turn off device if idle for”, select the time. The terminal will be power off after left idle for the interval time(When used with battery)



4.11 Regional Settings

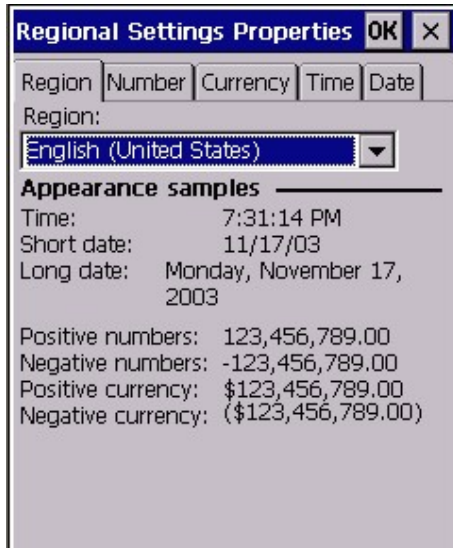
Path: Start/Settings/Control Panel/Regional Settings

This setting is to set the regional settings, currency, date format etc.

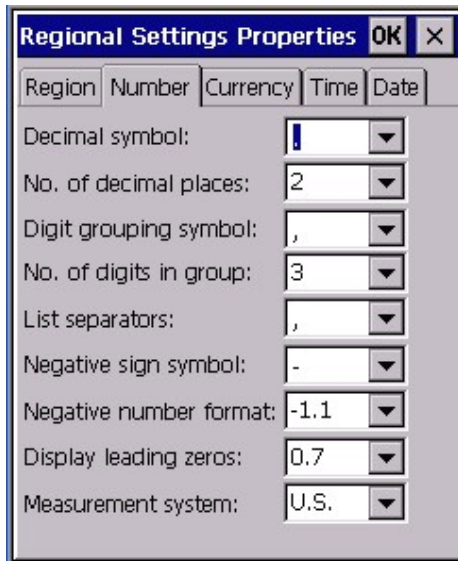
1. Double tap “Regional Settings”.



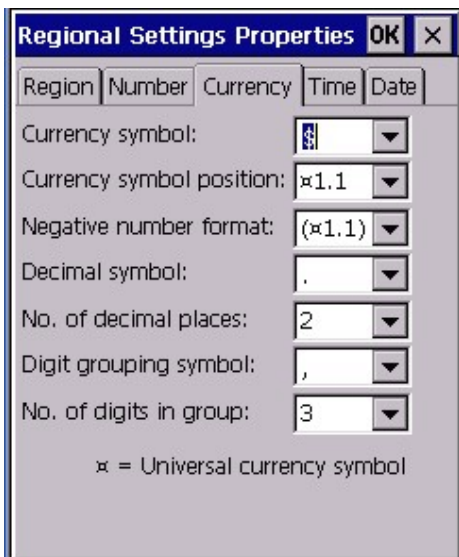
2. Under “Region”, select the region you want to use.



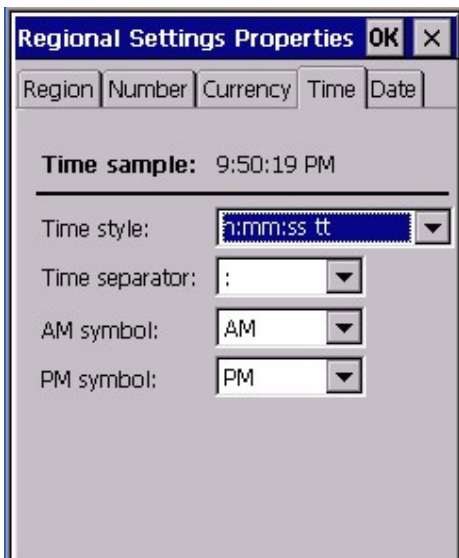
3. Under “Number” tab, select the symbol and format you want.



4. Under “Currency”, select the symbol and format you want.



5. Under “Time”, select the time format.



6. Under “Date”, select the date format.



4.12 Stylus

Path: Start/Settings/Control Panel/Stylus

This setting is to set the sensitivity of the tapping and to do the calibration.

1. Double tap “Stylus”.



2. Under “Double Tap”, repeat step 2 in chapter 4.6.

3. Under “Calibration”, tap “Recalibrate”. Calibrate the screen using the stylus.
(Please refer to chapter 3.3)

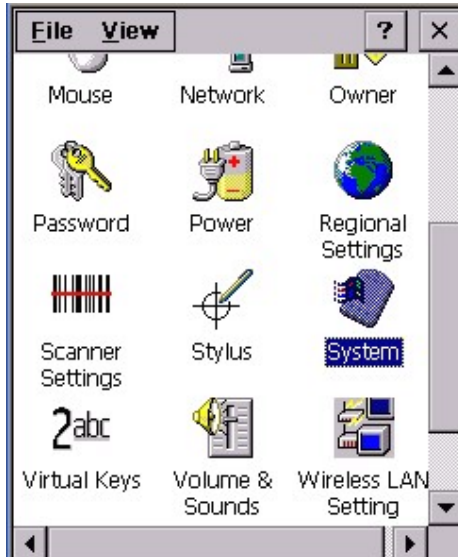


4.13 System

Path : Start/Settings/Control Panel/System

This setting is to show you the general information of the system and allow you to adjust the size of storage memory and program memory.

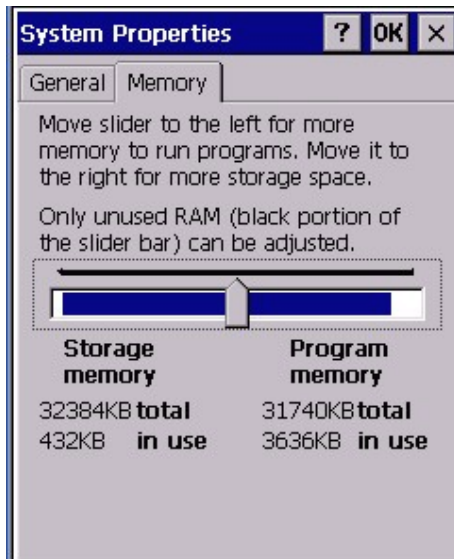
1. Double tap “System”.



2. System shows the version of the Win CE and the hardware information of the terminal.



3. Under “Memory”, adjust the size of the memory by using the slider.

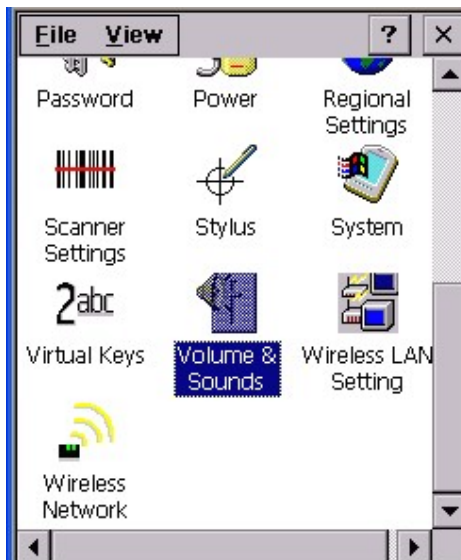


4.14 Volume & Sounds

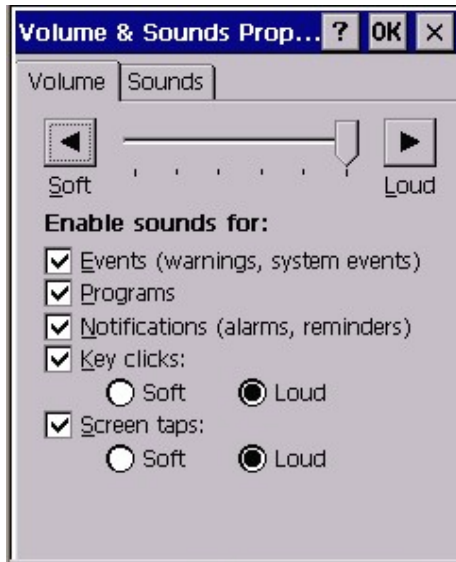
Path: Start/Settings/Control Panel/Volume & Sounds

This setting allows you adjust the volume of the tapping , key clicks, events, notifications etc. Also, it allows the user to specify the type of sounds for a special event and set a scheme for the sounds.

1. Double tap "Volume&Sounds".

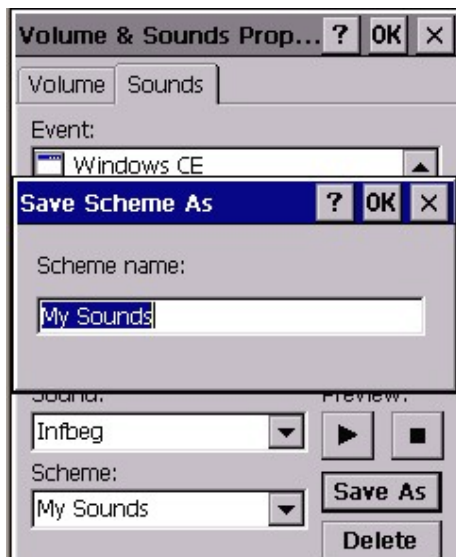


2. Adjust the volume and tick the options that you want the sound to apply on.



3. To build a new scheme, tap “Save As”.

4. Enter a name for the scheme.



5. Under “Events”, click any events. Select the sounds. Tap the Preview button to listen to the sounds.

6. To delete an event from the scheme, tap “Delete”.
7. Tap “Save As” to overwrite when you make new change.
8. You have a new scheme for sounds. You may select any scheme you want at anytime.

Chapter 5 Available Function Keys

1. **Func + Esc (Calibration)**
2. **Func + Up Arrow (Screen Backlight)**
3. **Func + Down Arrow (Keypad Backlight)**
4. **Func + TAB (Keypad Backlight)**
5. **Func + 6 (Task Manager)**
6. **Func + 7 (Scanner Setting)**
7. **Func + 8 (Power Management)**
8. **Func + 9 (Device Information)**

5.1 Func + Esc

Press Func key and Esc key. Calibration is ready to be executed. Calibrate the screen by stylus. (Please refer to chapter 3.3)



Carefully press and briefly hold stylus on the center of the target. Repeat as the target moves around the screen. Press the Esc key to cancel.



5.2 Func + Up Arrow

Pressing Func key + Up Arrow key will toggle the screen backlight.



5.3 Func + Down Arrow

Pressing Func key and Down Arrow key will toggle keypad backlight.



5.4 Func + TAB

Pressing Func key and TAB key will toggle the keypad backlight.



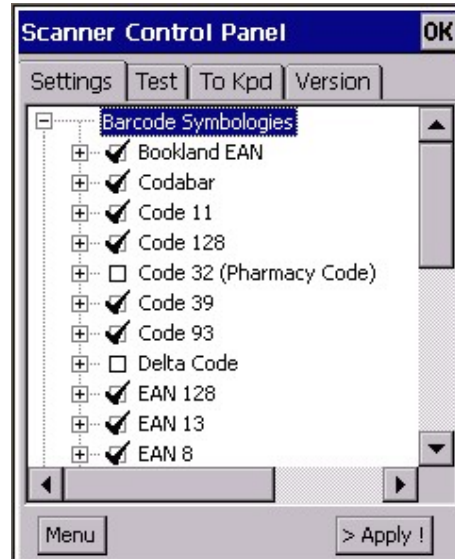
5.5 Func + 6

Pressing Func key and numeric key “6” will execute Task Manager. (Please refer to chapter 3.20)



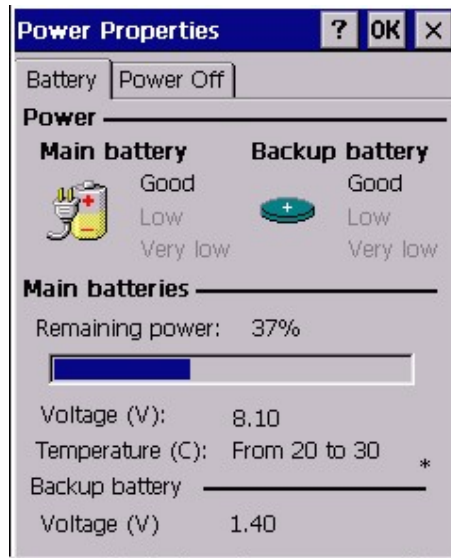
5.6 Func + 7

Pressing Func key + numeric key “7” will execute scanner settings. (Please refer to Chapter 2.10)



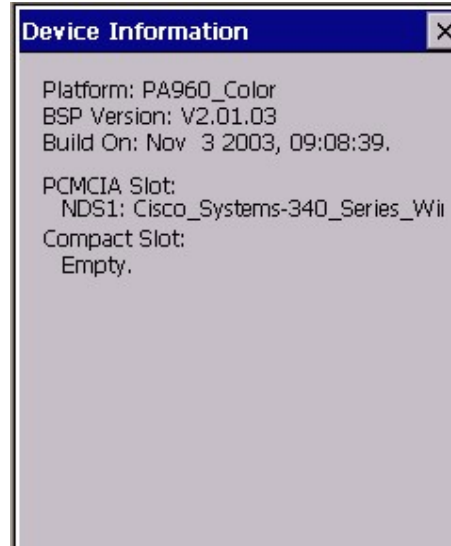
5.7 Func + 8

Pressing Func key and numeric key “8” will execute power management. (Please refer to Chapter 4.9)



5.8 Func + 9

Pressing Func key and numeric key “9” will show the device information. (Please refer to chapter 2.3)



Chapter 6 Other Applications

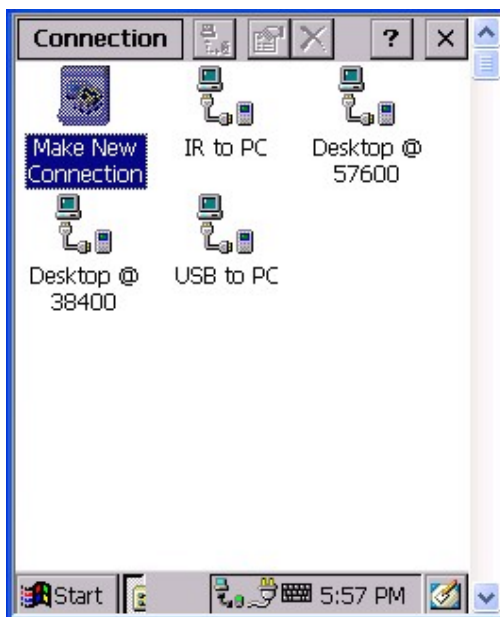
1. Remote Networking

6.1 Remote Networking

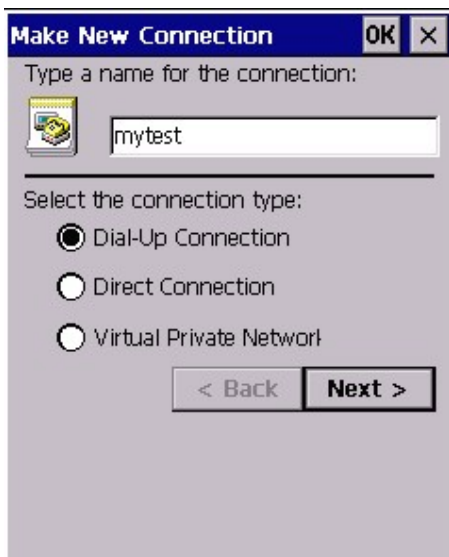
Path: Start/Program/Communication/Remote Networking

This application is to set up a new wireless connection while you connect the terminal to wireless network by using GPRS PC card. (Insert the GPRS PC card and specify the APN name)

1. Select “Start > Program > Communication > Remote Networking”.
2. Double tap “Make New Connection”.



3. Enter a name for the connection.
4. Select “Dial-Up Connection”. Tap “Next”.



5. Select a modem. Select the type of the GPRS PC card you are using.

6. Tap “Configure”.



7. Set the port settings.

8. Set the call options.

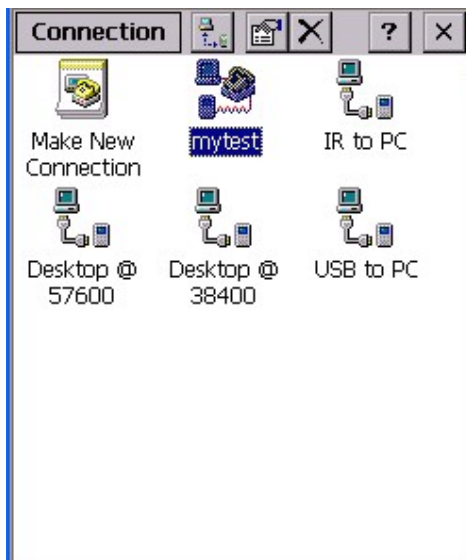
9. Tap “OK”.

10. Tap “Next”.

11. Key in the phone number. Tap “Finish”.



12. A new connection is added.



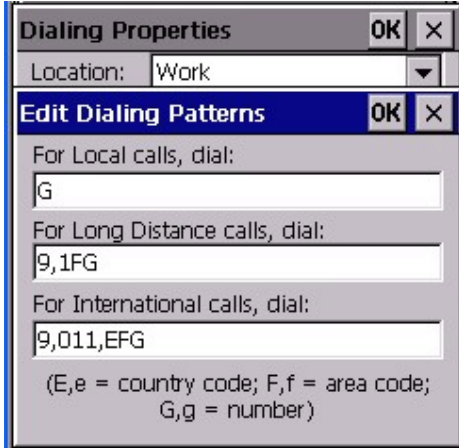
13. Double tap this new connection. Tap “Dial Properties”.



14. Tap “Edit”.



15. Edit the dialing patterns. Tap “OK”, “OK”.



16. Tap “Connect”.



17. Terminal is connected to wireless network by GPRS PC card.

Chapter 7 RF Connection, GPRS and Bluetooth

1. RF Connection – Cisco Aironet
2. RF Connection – Lucent Orinoco (Agere System)
3. RF Connection – Symbol
4. RF Connection – Built in RF card model
5. GPRS – Sierra Wireless AirCard750
6. GPRS – Option Globe Trotter
7. Bluetooth – Socket

7.1 RF Connection – Cisco Aironet

PA960 come with Aironet Client Utility version 1.70. In order to use Cisco RF card in PA960, it is essential to use Aironet Client Utility to set your SSID, WEP etc. Please refer to Chapter 3.2. In addition, you may use tool such as Cisco Link Status, site survey tool etc to check the Cisco connection.

However, please note that Aironet Client Utility version 1.70 only can work with Cisco RF card with firmware version V4.XX.XX. If you are using Cisco RF card with Firmware version V5.XX and above, you need to downgrade your Cisco card to V4.XX.XX or you may install Aironet Client Utility version 2.3 and above.

Downgrade Cisco RF card firmware version

Please refer to chapter 3.7 to load firmware.

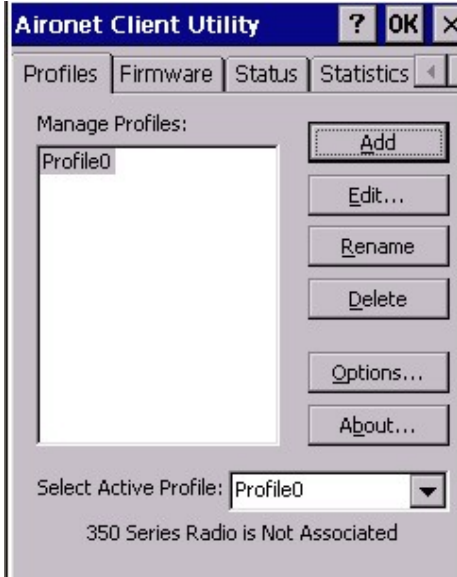
Or you may perform the action on your PC/notebook.

1. Install Aironet Client Utility on your PC/Notebook.
2. Insert your Cisco RF card into your PC/Notebook.
3. Run Aironet Client Utility on your PC/Notebook.

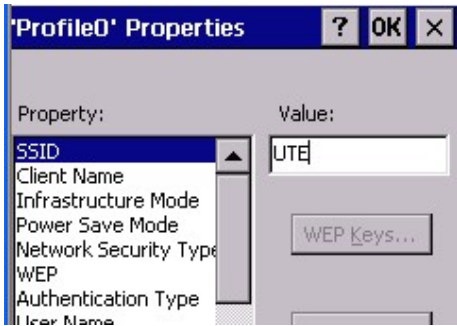
4. Click icon of “Load Firmware”.
5. Select the firmware from your local HDD (example: V4.25.30.img)
6. Your Cisco RF card will be loaded with new firmware.
7. You may double check the version by clicking “Status”.

Install Aironet Client Utility version 2.30 and above...

1. Download the utility from Cisco web site. Double click to install on your host.
2. Copy “CiscoHpc3SA_a.CAB” from /Program Files/Microsoft ActiveSync/Cisco Aironet Wireless LAN Adapter/ to your terminal.
3. Double tap CiscoHpc3SA_a.CAB on your terminal to install.
4. Follow the screen instruction.
5. You will see “Aironet Client Utility” on your desktop or in /Start/Program.
6. Run “Aironet Client Utility”. Tap “Profile” Tab.
7. Insert your Cisco RF card in your terminal.
8. Under Manage Profiles, tap “Profile0”. Tap “Edit”.



9. Select SSID, enter your SSID.



10. For Power Save Mode, select "MAX PSP".



11. WEP, select Static Key. Tap “WEP KEYS”.



12. Key in your WEP key.



13. Tap OK. OK.

14. Cisco RF card is ready to use.

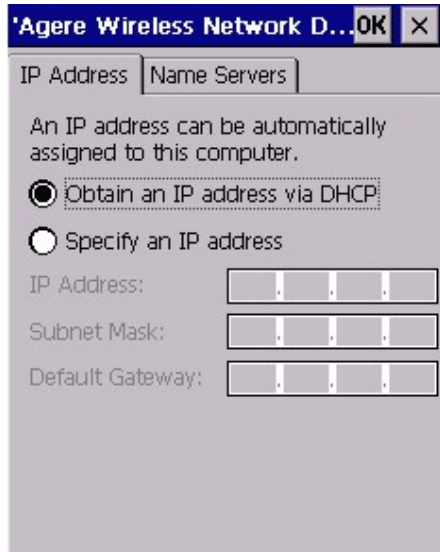
15. In addition , you can check the connection under “Status”, “Statistic” and “Survey”.

7.2 RF Connection – Lucent Orinoco (Agere System)

Another alternative wireless connection is by using Lucent Orinoco RF card. (Recommend: Agere Wireless Ruby PC Card with Short Antenna). A built-in Lucent Driver and the utility(WMAGS46.exe) allows the users to use Lucent Orinoco RF

card and make the connection setting.

1. Insert Lucent Orinoco RF card into the terminal. You will see a window pop up asking you to select obtain IP via DHCP or specify an IP address. Select either one of them. (If you select the later, do not forget to specify DNS under “Name Servers”.)



2. You will see Lucent Orinoco card is recognized and an icon appear on the taskbar. Tap the icon. You will see the screen as below:



3. Repeat step 4 ~ step 22 in Chapter 3.24.

7.3 RF Connection – Symbol

In addition, wireless connection via symbol RF card also available. Please follow steps in Chapter 3.10.

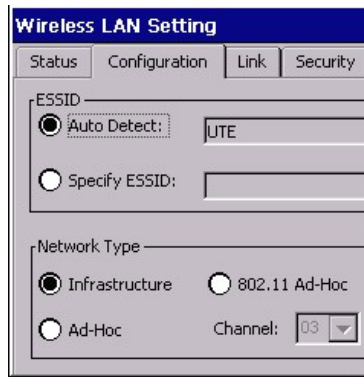
7.4 RF Connection – Built in RF card model

PA960 has a another model which come with built in wireless LAN CF card. To make this card connect to the network, please follow the steps below to complete the setting:

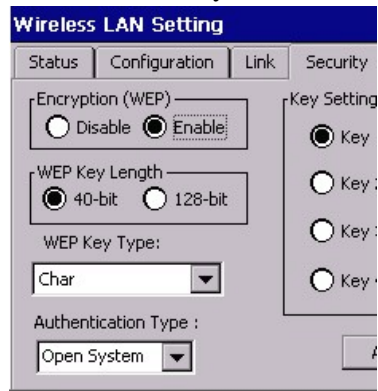
1. Tap /Start/Settings/ControlPanel/Wireless LAN Setting.



2. In configuration tab, specify SSID and Network Type, tap “Apply”.



3. In security tab, enable WEP and specify your WEP key, tap “Apply”.



4. Tap OK.
5. Warm Start.
6. Tap /Start/Program/Uniping, check your Local IP.
7. Connect to network.

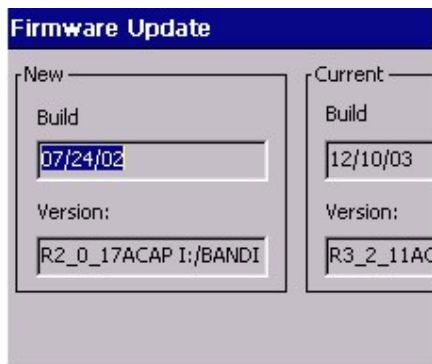
7.5 GPRS – Sierra Wireless AirCard750

Besides Option Globetrotter GPRS, users can use Sierra Wireless Aircard 750 for GPRS connection.

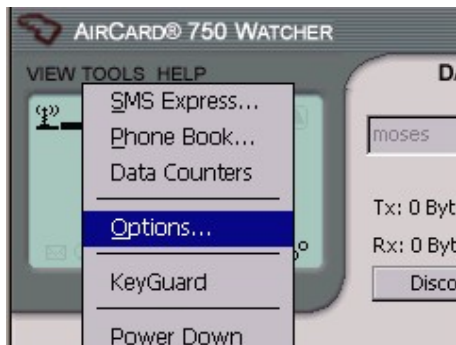
1. Install Aircard driver into terminal by double tap “Aircard 7X0 for Handheld PC2000.HPC2000_2577.cab”, follow the instruction and warm start your terminal.
2. Insert Aircard750 into the terminal.
3. From /Start/Program, tap “Aircard 750 watcher”.



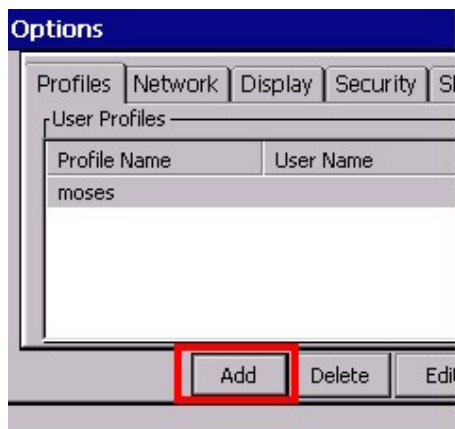
4. Firmware update. You may select “Update now” or “Update later”.



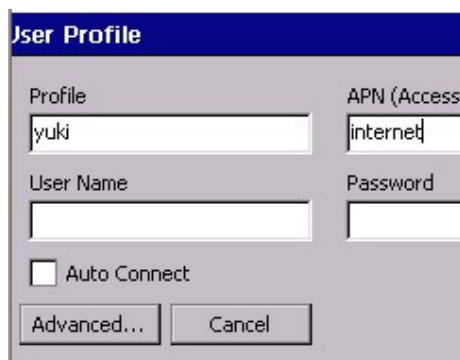
5. On the watcher, tap “Tools”> Options.



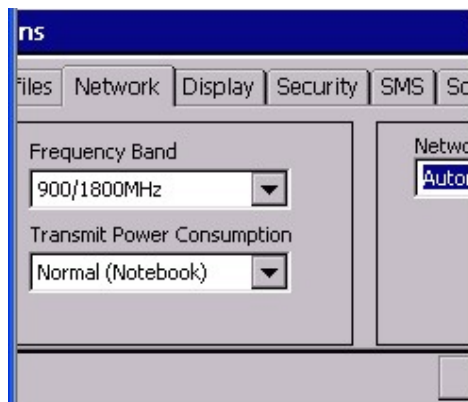
6. Under profile, tap “Add” to add a new profile.



7. Enter a name for this profile, enter the APN. Tap OK.



8. Under “Network” tab, select the frequency band and transmit power consumption. For Network selection mode, select “Automatic”. Tap Apply.



9. Under “My Number” tab, at “Number” field, enter the phone number. Tap Apply.
You may connect to network now.



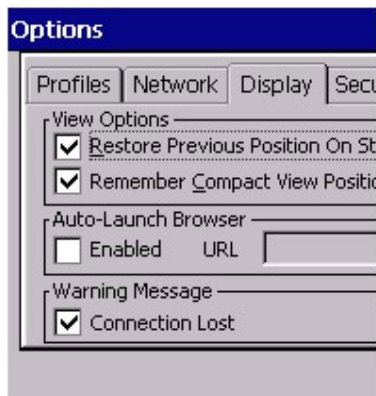
10. In addition, you may set other setting in Display, Security, SMS, Sounds and Voice tab.

11. For Display, you may check “Restore previous position on Startup” and “Remember Compact View Position”.

If you want to launch browser automatically once Sierra wireless is running, check “Enabled” under Auto Launch Browser and key in the URL of your home page.

If you want the warning message to pop up while connection is lost, check “Connection Lost” under Warning Message.

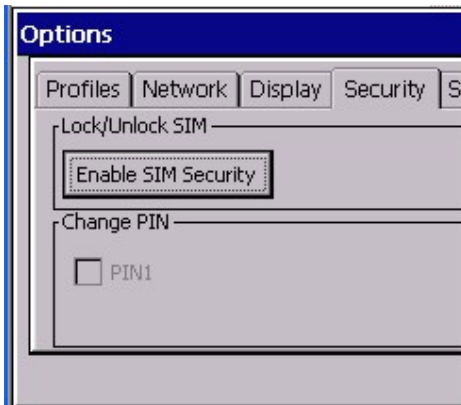
Tap Apply.



12. Under “Security” tab, you can tap “Enable SIM security” to enter your PIN for your SIM card security. (Caution: Please be careful to enter the correct pin , your SIM card will be locked once a wrong PIN number is entered 3 times.)

To change your PIN number, enable SIM security first. Select PIN1 check box and

enter you PIN in “Current” field. Enter a new password and verify your password again. Tap OK. Tap “Yes” to confirm to change the PIN.



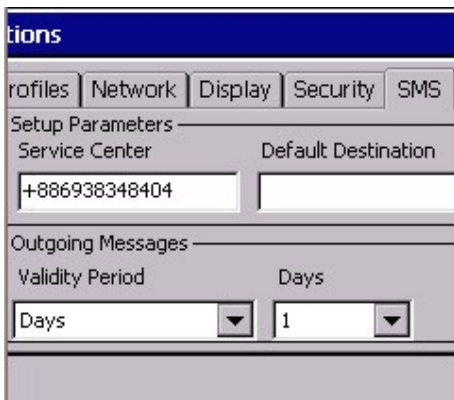
13. Under “SMS” tab, you will see your service center. The number is retrieved from your SIM card. Do not change this number.

Enter the default phone number to which the SMS message is sent. (Optional)

Specify validity period (How long the SMS messages are stored on the network).

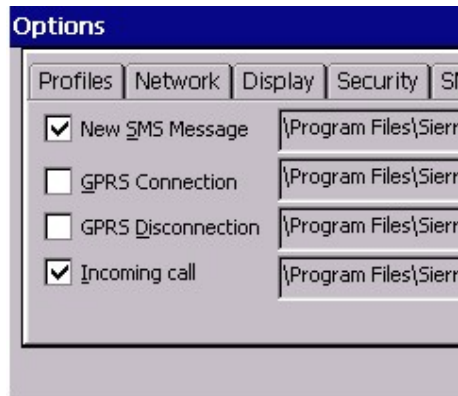
Select the way you want your message to be saved or not saved in the outbox.

Tap Apply.



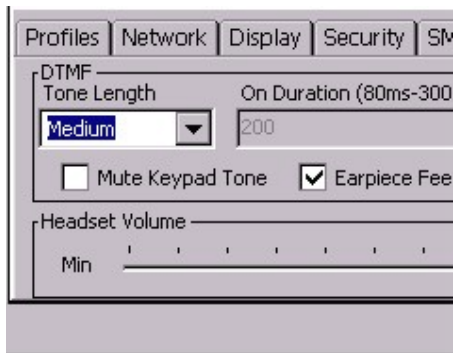
14. Under “Sounds” tab, you may specify the warning sounds for each occasion.

Tap Apply.



15. Under “Voice” tab, specify the tone assigned to each key under DTMF. Specify the number of milliseconds the tone is on and off. Check “Mute keypad tone” if you do not want any sounds when you dial a number. Check “earpiece feedback”, a sound will occur when you select dial pad keys. The headset volume allows users to adjust the volume of what you hear.

Tap Apply.



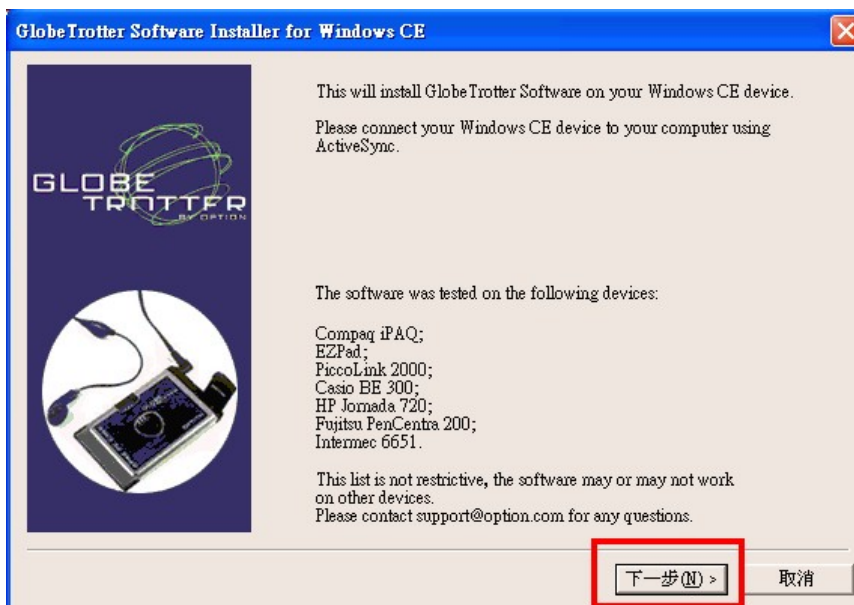
Note: For more details, please download the user guide from Sierra Wireless Web site.

7.6 GPRS – Option Globe Trotter

Another GPRS available is by using Option Globe Trotter.

1. Install APN manager on your host from Option Globe Trotter CD.
2. Connect your host and the terminal via Activesync.

3. Double click APN manager to install it on the terminal.

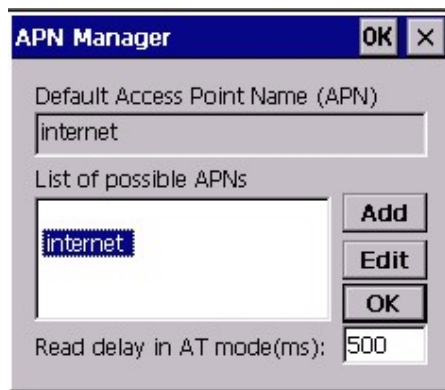


4. Reset your terminal.

5. You will see the APN manager in terminal's control panel.

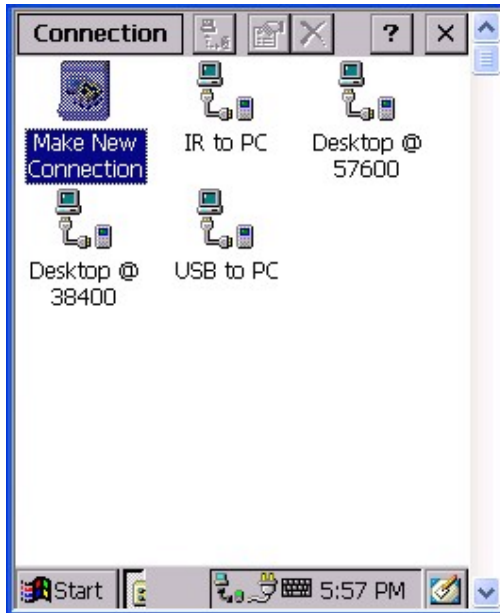


6. Tap “Add”. Enter you APN. Tap OK.



7. Select “My Computer/Windows/connmc.exe”.

8. Double tap “Make New Connection”.



9. Enter a name for the connection.
10. Select "Dial-Up Connection". Tap "Next".



11. Select a modem. Select the type of the GPRS PC card you are using.
12. Tap "Configure".



13. Set the port settings.

14. Set the call options.

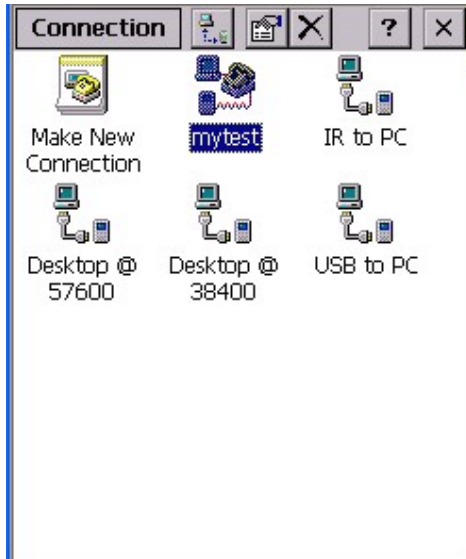
15. Tap "OK".

16. Tap "Next".

17. Key in the phone number. Tap "Finish".



18. A new connection is added.



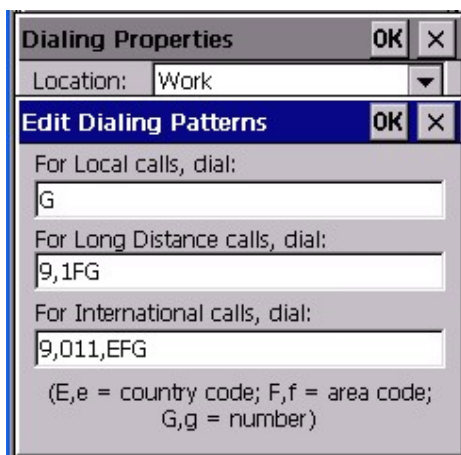
19. Double tap this new connection. Tap “Dial Properties”.



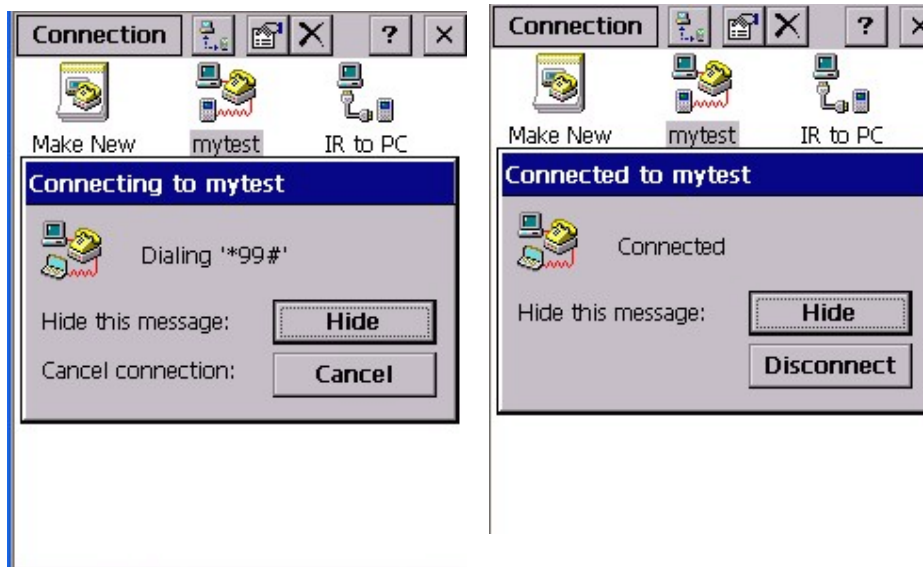
20. Tap “Edit”.



21. Edit the dialing patterns. Tap “OK”, “OK”.



22. Tap “Connect”.



13. Terminal is connected to wireless network by GPRS PC/modem card.

7.7 Bluetooth – Socket

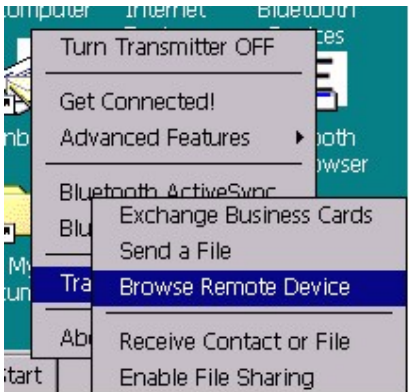
Socket Bluetooth card is recommended for bluetooth communication on PA960.

1. Download socket bluetooth driver and double click to install on your host.
2. From host:/C:/Program Files/Microsoft ActiveSync/Socket Bluetooth Software, copy “Output.GalArm.CAB” to the terminal.
3. From host:/C:/Program Files/Microsoft ActiveSync/Socket Bluetooth OBEX Software, copy “Obex.Output.GalArm.CAB” to the terminal.
4. Double tap Output.GalArm.CAB to install and tap next , next until finish.
5. Double tap Obex.Output.GalArm.CAB to install.
6. Warm start the terminal.
7. Insert Socket Bluetooth card into the terminal.

8. Bluetooth icon will appear on the task bar.



9. Tap this icon and select “Transfer via Bluetooth” > “Browse Remote Device”.



10. Terminal will begin to search remote bluetooth devices.



Once a device is found, a communication between the devices can be started.

11. Other features of Socket bluetooth, please refer to the below:

12. Tap Bluetooth icon and select “Turn Transmitter OFF”. The bluetooth card radio

transmitter will shut off. To turn it on again, tap the icon and tap “Turn Transmitter ON”.

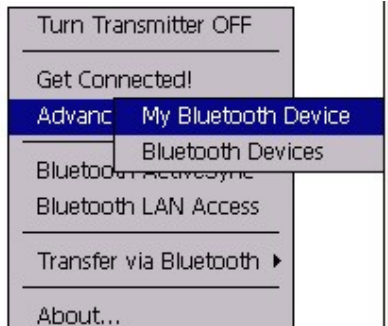


13. If you want to use PA960 to communicate to a bluetooth mobile phone, select “Get Connected!”. The wizard guides you thru a one-time setup process that prepares the mobile phone and computer for Bluetooth to connect to. Tap “Next” and follow the screen instruction.

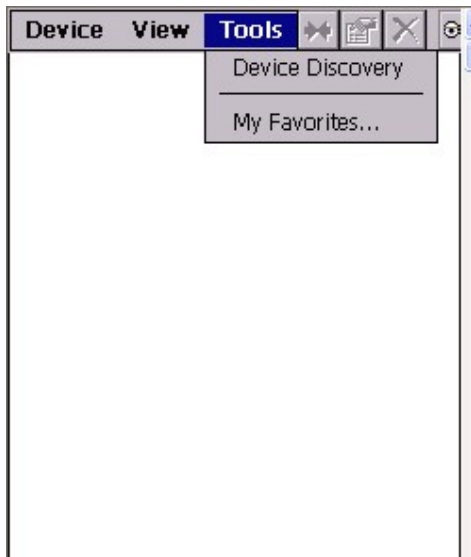
Mobile phones supported: Ericsson, Nokia6210, NTT DoCoMo, Sony phones, Motorola Timeport 270C, Nokia 3650/6310/7650/8910/8910i.



14. Tap icon , select “Advanced Features” > My bluetooth device. You may change the name of your bluetooth device, assign your bluetooth com port , assign your business card and specify your shared folder.



15. To find nearby bluetooth device and add it in your bluetooth devices folder, select “Advanced features” > “Bluetooth Devices”. (The bluetooth device you want to search must be in “Discoverable” mode). Besides, you can put your favorite phone/Fax/Computer/Printer in your favorites.



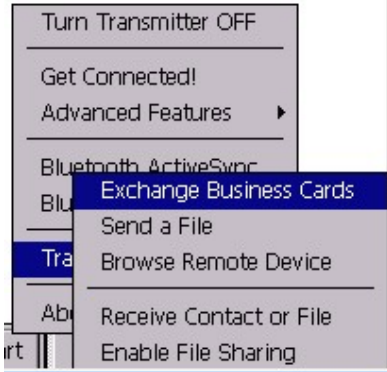
16. Tap icon and select “ Bluetooth ActiveSync”, it will allow the users to ActiveSync to a notebook or to a desktop computer. If there is no computers in your favorite folder, a bluetooth device search will begin; if there is computer in your favorite folder, your terminal will automatically connect to your favorite computer. A connect to screen appear. After a successful connection is made, it will report “Connected”. You are now ready to synchronize files.



17. Tap icon and select “Bluetooth LAN Access”, Socket bluetooth will start to connect to the bluetooth-enabled LAN access point in your favorite folder or search for a bluetooth-enabled LAN access point. You may select the access point you want to use. Enter passkey if it is required. After connection is successful , you will see “Connected”. Now you are ready to access your LAN for internet access, files etc.



18. To exchange your business card with other bluetooth device, assign your business card first in Advanced Features > My Bluetooth Device > Object Sharing. Tap icon and select “Transfer via Bluetooth” > “Exchange Business Card”. Socket bluetooth search for bluetooth devices. Select the device that you want to exchange the business card with. Your business card will be sent to that device and you will receive the business card from that device as well.



19. To send a file, select “Send a File”. Socket bluetooth search for bluetooth devices. Select the device that you want to send your files to .Select the folder and the file you want to send. (Note: Must set up the destination device to receive a file by tapping “Receive Contact or File”.)

20. Tap “Enable File Sharing”. Socket bluetooth search for bluetooth devices. Select the device that you want to share your files with. File sharing is enabled until you tap “Cancel”.

Note: For more details, please download the user manual of Socket Bluetooth form the web site.

Free Manuals Download Website

<http://myh66.com>

<http://usermanuals.us>

<http://www.somanuals.com>

<http://www.4manuals.cc>

<http://www.manual-lib.com>

<http://www.404manual.com>

<http://www.luxmanual.com>

<http://aubethermostatmanual.com>

Golf course search by state

<http://golfingnear.com>

Email search by domain

<http://emailbydomain.com>

Auto manuals search

<http://auto.somanuals.com>

TV manuals search

<http://tv.somanuals.com>