

***SMOKE & FIRE ALARM WITH SILENCE FEATURE  
AND ALARM ORIGINATION FEATURE***

**READ ALL INSTRUCTIONS**

This smoke alarm uses an extremely small amount of a radioactive element in the ionization chamber. Do not tamper with radioactive sealed source or try to repair the smoke alarm yourself.

**Table of Contents:**

	<b>Page #</b>
Smoke Alarm Limitations and Functions .....	2
Recommended Location of Alarms .....	3
Avoid These Locations .....	4
Early Warning .....	4
Installation Instructions .....	4
Locking/Tamper Feature .....	4
Operation, Testing & Maintenance .....	5
Quick Find <sup>®</sup> Alarm Originating Feature & Reset .....	5
Cautions/Warnings .....	6
Battery Replacement .....	7
Develop and Practice a Plan of Escape .....	7
Operational Summary .....	8
Warranty .....	Back Cover

## SMOKE ALARM LIMITATIONS AND FUNCTIONS

- There are three basic smoke alarm types: **IoPhic®**, **Ionization** and **Photoelectric**.  
**IoPhic®** is an ionization alarm containing a patent-pending Universal Smoke Sensing Technology. **IoPhic®** alarms are very effective at detecting fast flaming fires and also respond very quickly to slow smoldering fires - up to 87% faster than the maximum allowable alarm limit (UL217 Smoldering Smoke Test on 5/26/2010, Underwriters Laboratories Project #09CA38078).  
**Ionization** smoke alarms are typically more effective at detecting fast flaming fires - fires which consume combustible materials rapidly and spread quickly. Sources of these fires may include paper burning in a wastebasket, or kitchen grease fires.  
**Photoelectric** smoke alarms, on the other hand, are typically more effective at detecting slow smoldering fires - fires which burn for hours before bursting into flame. Sources of these fires may include cigarettes burning in couches or bedding.  
Installing **IoPhic®** smoke alarms ensures maximum detection of both types of fires from a single alarm, while eliminating the need for a combination of ionization and photoelectric smoke alarms.  
The enclosed alarm is a combination **Photoelectric and Ionization** smoke alarm.
- SMOKE ALARMS WILL NOT WORK DURING A LOSS OF POWER. SINCE A SMOKE ALARM WILL NOT WORK WITHOUT POWER, having an alarm(s) that works from two completely different power sources, such as an AC direct wire with battery backup smoke alarm, can give you an extra measure of protection in case of an AC power failure or a dead battery. Battery operated alarms cannot work if the batteries are missing, disconnected or dead, if the wrong type of batteries are used or if the batteries are not installed correctly. AC (only) powered alarms cannot work if the AC power is cut off for any reason. If you are concerned about the limitations of the battery or AC power, install both types of alarms.
- USING AN IONIZATION SMOKE ALARM IN A SMOKY AREA, SUCH AS A KITCHEN, OR IN A HIGH HUMIDITY AREA NEAR A SHOWER, CAN CAUSE NUISANCE FALSE ALARMS. IT IS PREFERABLE TO USE PHOTOELECTRIC ALARMS IN THESE AREAS. DO NOT TURN OFF THE AC POWER TO QUIET THE ALARM. A SMOKE ALARM WILL NOT HELP PROTECT YOU IF IT IS NOT POWERED. Properly locate your alarm to avoid nuisance alarms.
- A SMOKE ALARM MAY NOT ALWAYS WARN YOU ABOUT FIRES CAUSED BY CARELESSNESS AND SAFETY HAZARDS LIKE SMOKING IN BED, VIOLENT EXPLOSIONS, ESCAPING GAS, IMPROPER STORAGE OF FLAMMABLE MATERIALS, OVERLOADED ELECTRICAL CIRCUITS, CHILDREN PLAYING WITH MATCHES, NATURAL CAUSES SUCH AS LIGHTNING, OR ARSON. FIRE PREVENTION IS YOUR BEST SAFEGUARD.
- INSTALLING SMOKE ALARMS MAY MAKE YOU ELIGIBLE FOR LOWER INSURANCE RATES, BUT SMOKE ALARMS ARE NOT A SUBSTITUTE FOR INSURANCE. Homeowners and renters alike should continue to insure their lives and properties.
- SMOKE ALARMS CANNOT DETECT FIRES IF THE SMOKE DOES NOT REACH THEM. Smoke from fires may not reach the sensing chamber and set off the alarm. One alarm should be installed inside each bedroom or sleeping area. Do not obstruct airflow around the smoke alarm or place in areas of obstructed airflow.
- BE AWARE OF VARIOUS SITUATIONS AGAINST WHICH THE SMOKE ALARM MAY NOT BE EFFECTIVE. For example: (1) Fires where the victim is intimate with a flaming initiated fire; for example, when a person's clothes catch fire while cooking; (2) Fires where the smoke is prevented from reaching the alarm due to a closed door or other obstruction or (3) Incendiary fires where the fire grows so rapidly that an occupant's egress is blocked even with properly located alarms.  
SMOKE ALARMS MAY NOT DETECT FIRE ON ANOTHER FLOOR OR AREA OF THE HOME. Recommended minimum protection is at least one smoke alarm in every sleeping area and every bedroom on every level of your home. Interconnected smoke alarms may provide earlier warning than stand-alone smoke alarms since all smoke alarms alarm when one detects smoke.
- SMOKE ALARMS MAY NOT BE HEARD. The alarm horn in this alarm meets or exceeds current standards, but it may not be heard if: (1) the smoke alarm is located outside a closed or partially closed door; (2) residents recently consumed alcohol or drugs; (3) the alarm is drowned out by noise from stereos, TV's, air conditioners or other appliances; (4) residents are hearing impaired or (5) if residents are sleeping. CURRENT STUDIES HAVE SHOWN SMOKE ALARMS MAY NOT AWAKEN ALL SLEEPING INDIVIDUALS AND THAT IT IS THE RESPONSIBILITY OF INDIVIDUALS IN THE HOUSEHOLD WHO ARE CAPABLE OF ASSISTING OTHERS TO PROVIDE ASSISTANCE TO THOSE WHO MAY NOT BE AWAKENED BY THE ALARM SOUND OR TO THOSE WHO MAY BE INCAPABLE OF SAFELY EVACUATING THE AREA UNASSISTED.
- SMOKE ALARMS ARE NOT FOOLPROOF. You must test the smoke alarm weekly to ensure your continued protection. Smoke alarms cannot prevent or extinguish fires.
- SMOKE ALARMS HAVE A LIMITED LIFE. The smoke alarm should be replaced immediately if it is not operating properly. You should always replace a smoke alarm after 10 years.
- SMOKE ALARMS ARE NOT TO BE USED WITH DETECTOR GUARDS UNLESS THE COMBINATION HAS BEEN EVALUATED AND FOUND SUITABLE FOR THAT PURPOSE.

## RECOMMENDED LOCATION OF ALARMS

- Locate the first smoke alarm in the immediate area of the bedrooms. Try to protect the escape route as the bedrooms are usually farthest from an exit. If more than one sleeping area exists, locate additional smoke alarms in each sleeping area. If a hall is more than 40 feet (12 meters) long, install a smoke alarm at each end.
- Locate additional smoke alarms to protect any stairway as stairways act like chimneys for smoke and heat.
- Locate at least one smoke alarm on every floor level.
- Locate a smoke alarm in any area where a smoker sleeps or where electrical appliances are operated in sleeping areas.
- Smoke, heat and other combustion products rise to the ceiling and spread horizontally. Mounting the smoke alarm on the ceiling in the center of the room places it closest to all points in the room. Ceiling mounting is preferred in ordinary residential construction. However, in mobile homes, wall mounting on an inside partition is preferred to avoid the thermal barrier that may form at the ceiling.
- When mounting smoke alarm on the ceiling, locate it a minimum of 4" (10cm) from a side wall or corner (see Diagram A).
- When mounting smoke alarm on a wall, if local codes allow, use an inside wall with the top edge of the smoke alarm a minimum of 4" (10cm) and a maximum of 12" (30.5cm) below the ceiling/wall intersections (See Diagram A).

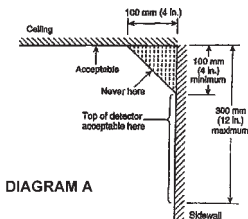
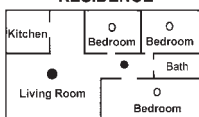


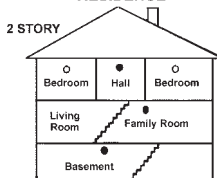
DIAGRAM A

### SINGLE STORY RESIDENCE



- Smoke Alarms for Minimum Protection
- Recommended Smoke Alarms for Additional Protection

### TWO STORY RESIDENCE

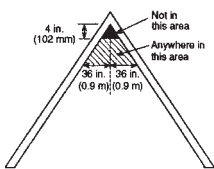


#### Existing Homes:

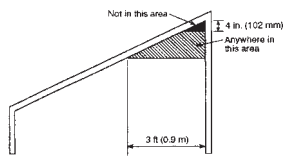
The NFPA requires a smoke alarm on every level and outside each sleeping area in existing construction. An existing household with one level and one sleeping area is required to have one smoke alarm.

#### New Construction Homes and Manufactured Homes:

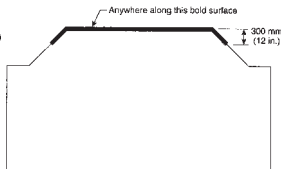
The NFPA requires AC-powered, interconnected smoke alarms to be installed inside each bedroom, outside each bedroom area, and on every level of the home. They also require a minimum of two AC-powered, interconnected smoke alarms in any new construction home.



SLOPED CEILINGS (PEAKED CEILINGS)



SLOPED CEILINGS (SHED CEILINGS)



LOCATIONS PERMITTED FOR SMOKE ALARMS ON TRAY-SHAPED CEILINGS

#### Sloped Ceilings (Peaked Ceilings):

Smoke alarms or smoke detectors mounted on a peaked ceiling shall be located within 36 in. (914 mm) horizontally of the peak, but not closer than 4 in. (102 mm) vertically to the peak.

#### Sloped Ceilings (Shed Ceilings):

Smoke alarms or smoke detectors mounted on a sloped ceiling having a rise greater than 1 ft. in 8 ft. (1 m in 8 m) horizontally shall be located within 36 in. (914 mm) of the high side of the ceiling, but not closer than 4 in. (102 mm) from the adjoining wall surface.

#### Tray-Shaped Ceilings:

Smoke Alarms or smoke detectors shall be installed on the highest portion of the ceiling or on the sloped portion of the ceiling within 12 in. (305 mm) vertically down from the highest point.

#### Mobile Home Installation:

For minimum protection, smoke alarms should be installed in compliance with H.U.D. Manufactured Home Construction Safety Standards, Title 24 CFR, Section 3280.208 and Section 3282. For additional protection, see Single Story Residence smoke alarm requirements/recommendations for Existing Homes and New Construction Homes.

**Note:** For mobile homes built before 1978, install smoke alarms on inside walls between 4" and 12" from the ceiling (older mobile homes have little or no insulation in the ceiling). This is especially important if the ceiling is unusually hot or cold.

Install a smoke alarm inside each bedroom and in the hallway outside each separate sleeping area.

## AVOID THESE LOCATIONS

- the garage – products of combustion are produced when you start your vehicle.
- near appliances or areas where normal combustion regularly occurs (kitchens, near furnaces, gas hot water heaters). Use smoke alarms with photoelectric sensors or smoke alarms with Silence Feature for these areas.
- in areas with high humidity, like bathrooms or areas near dishwashers or washing machines. Install at least 3 feet (0.9 meters) away from these areas.
- in areas of turbulent air such as air returns or heating and cooling supply vents, smoke alarms shall not be located where airflow prevents smoke from reaching the alarms.
- in extremely dusty, dirty or insect-infested areas. Loose particles interfere with smoke alarm operation.
- in areas where temperature may fall below 40°F (4.4°C) or rise above 100°F (37.8°C).
- closer than 1 foot (0.3m) from fluorescent lights, electrical "noise" and flickering may affect the alarm's operation.
- closer than 3 feet (0.9m) horizontal path from the tip of the blade of a ceiling suspended (paddle) fan.
- on a poorly insulated ceiling or exterior wall (mount smoke alarm on an inside wall).

**THIS SMOKE ALARM WILL NOT WORK WITHOUT A GOOD BATTERY PROPERLY INSTALLED. THE SMOKE ALARM SHOULD BE TESTED WHEN INSTALLED AND THEN TESTED WEEKLY AFTER THAT.**

### **CAUTION!**

*Early warning fire detection is best achieved by the installation of fire detection equipment in all rooms and areas of the household as follows: A smoke alarm installed in each separate sleeping area (in the vicinity of, but outside of, the bedrooms); and, as appropriate, heat or smoke alarms in living rooms, dining rooms, kitchens, hallways, attics, furnace rooms, closets, utility storage rooms, basements and attached garages. Test the alarms weekly to assure proper operation.*

### **WARNING!**

**INSTALLATION INSTRUCTIONS: CAUTION!! READ CAREFULLY.**

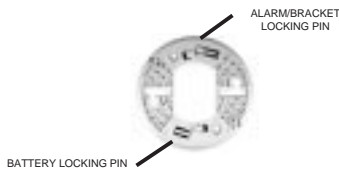
**CAUTION: THIS SMOKE ALARM IS SEALED. THE COVER IS NOT REMOVABLE!**

- A mounting bracket is provided on the back of the alarm.
- Remove the mounting bracket from the back of the alarm by holding the mounting bracket and twisting the alarm in the direction indicated by the "TWIST TO REMOVE" arrow on the side of the alarm base.

**OPTIONAL TAMPER RESISTANT FEATURES:** There are two separate tamper resistant locking features provided for this model. Activating one or both of these features deters someone from removing the smoke alarm from the mounting bracket or removing the battery from the alarm. The breakaway locking pins are clearly marked and molded into the mounting bracket. Refer to the diagram on the next page.

**TO ACTIVATE THE LOCKING FEATURES:** Do not activate the locking features until you have activated the battery, mounted the smoke alarm to the bracket and tested the smoke alarm. Refer to OPERATION, TESTING & MAINTENANCE instructions on Page 6.

1. Detach the breakaway alarm locking pin from the mounting bracket.

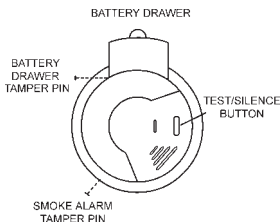


2. Insert the pin into the hole for the feature you are activating. Refer to the diagram below for correct placement.



**TO DEACTIVATE THE LOCKING FEATURES:** To remove the smoke alarm for cleaning or servicing or to replace the battery, you must first remove the appropriate locking pin, if it has been installed.

1. Use long nose pliers to pull the locking pin out of the hole.
2. It is now possible to remove the smoke alarm or replace the battery.



1. Attach the mounting bracket to the wall or ceiling (your preference).
2. To activate 9 volt battery and alarm, hold the QUICK DRAW<sup>®</sup> battery drawer closed, pull and remove the PULL-TAB. Confirm that the entire PULL-TAB has been completely removed. Discard PULL-TAB.
3. Push and twist the alarm clockwise onto the mounting bracket.
4. See "OPTIONAL TAMPER RESISTANT FEATURES" and "TO ACTIVATE THE LOCKING FEATURES" instructions on Page 4.
5. The red LED blinks on every 40-45 seconds to indicate proper operation.

### OPERATION, TESTING & MAINTENANCE

**OPERATION:** The smoke alarm is operating once the battery power is connected and turned on. When products of combustion are sensed, the alarm sounds a loud alarm which continues until the air is cleared.

This alarm incorporates the NFPA recognized horn signal for evacuation. During alarm mode, the horn produces three beeps followed by a two second pause and then continually repeats.

**READY/ACTIVE CONDITION:** The red LED blinks on once approx. every 40-45 seconds to indicate the alarm is properly functioning.

**LOCAL ORIGINATING ALARM CONDITION:** The red LED blinks on once approx. every 2 seconds and the alarm emits a loud, pulsating alarm sound.

**NUISANCE ALARMS:** The smoke alarm is designed to minimize nuisance alarms. Smoking will not normally set off the alarm unless smoke is blown directly into the smoke alarm. Combustion particles from cooking may set off the alarm if the smoke alarm is located close to the kitchen cooking surface. Large quantities of combustion particles are generated from spills or broiling.

If the smoke alarm does sound, check for fires first. If a fire is discovered, get out and call the fire department. If no fire is present, check to see if one of the reasons listed above may have caused the alarm. Use the Silence Feature if it is a nuisance alarm, or reset the alarm by pressing and holding the test button for ten seconds. Refer to RESET below.

**TESTING:** Test by pushing the Test button on the smoke alarm cover until the alarm sounds, then release. The alarm sounds if all electronic circuitry, horn and battery are working. If no alarm sounds, the alarm may have a power supply failure. **Test the smoke alarm weekly to assure proper operation.**

**ALARM ORIGATION:** The QUICK FIND<sup>®</sup> Alarm Origination Feature allows the user to identify the initiating alarm smoke alarms in an interconnected alarm system. If an interconnected alarm system is initiated by one of the alarms, when the alarm system exits alarm condition, the user can identify the initiating alarm by:

- a. Pressing and releasing the test button on any alarm in the system.
- b. Interconnected alarms will sound and then stop.
- c. The originating smoke alarm will continue to sound 60 seconds to allow ample time to quickly find originating alarm.

**RESET:** To reset the QUICK FIND<sup>®</sup> Alarm Origination Mode - Hold the Test/Silence button for 10 seconds, or temporarily remove (and then replace) the battery. This will clear alarm origination indicator.

**TROUBLE/SERVICE ALARM:** If the smoke alarm beeps 3 times approx. every 40 seconds after the red LED flashes on and cannot be restored to normal operation, the smoke alarm should be replaced.

**END-OF-SERVICE LIFE NOTIFICATION:** A majority of home fire deaths are a result of no smoke alarms or no *working* smoke alarms. In addition to the "replace by date" stamped on the back of your alarm, your alarm contains a unique audible end-of-service life notification feature. When it is time to replace your alarm, which is after approximately 10 years of operation from initial power up, the alarm will sound 1 beep approx. every 60 seconds and the red LED will blink on once approx. every 40-45 seconds. The alarm should be replaced immediately.

The end-of-service life signal can be silenced for approximately 6 hours. To perform this function, press and release the test button. The alarm will sound for approximately 60 seconds while it resets. After the reset function is completed, the alarm will be silent for approximately 6 hours. The end-of-service life signal will activate after the silence period.

### **⚠️WARNING!**

***NEVER use an open flame of any kind to test this smoke alarm. You might accidentally damage or set fire to the smoke alarm or to your home. The built-in test switch accurately tests the smoke alarm's operation as required by Underwriters Laboratories Inc. (UL).***

#### **(UTHA) Sensitivity Indicating Means**

The sensitivity indicating means for this Smoke and Fire Alarm is the use of the analyzer for Smoke Detectors Model 501-A or 501-A/Bat Aerosol Generator Manufactured by Gemini Scientific Corp., 1122-B Aster Ave., Sunnyvale, CA 94086.

The Equivalent UL 268 Light obscuration %/Ft as measured by this instrument must be within the obscuration listed on the back of this alarm.

#### **(UTHA) Go/No-Go Field Test**

The Go/No-Go test for this smoke and fire alarm is to use one of the following UL listed can-type aerosol smoke alarm testers. The instructions for use are printed on the canister. Home Safeguard, Model 25S.

### **⚠️CAUTION!**

***If you choose to use an aerosol smoke product to test the smoke alarm, be certain to use one that has been Listed to Underwriters Laboratories, Inc. Safety Standards and use it only as directed. Use of non-UL Listed products or improper use of UL Listed products may affect the smoke alarm's sensitivity.***

**NUISANCE ALARM SILENCE FEATURE:** This feature is to be used only when a known alarm condition, such as smoke from cooking, activates the smoke alarm. The smoke alarm Silence Feature is activated by pushing and releasing the Silence button on the smoke alarm cover. The smoke alarm will automatically reduce sensitivity and the red LED will blink on approx. every 2 seconds to indicate the alarm is in the Silence mode. The smoke alarm will gradually regain normal sensitivity and sound the alarm if particles of combustion are still present. The 8-12 minute Silence feature may be used repeatedly until the air has cleared, by pushing and releasing the Silence button again. Resetting the smoke alarm after a nuisance alarm is recommended.

**NOTE:** If the Test button is pressed and held during the Silence mode, the smoke alarm will be tested normally. Upon the release of the Test button, the Silence mode will be restarted.

***Before using the alarm Silence Feature, identify the source of smoke and be certain that safe conditions exist.***

#### **(UTHA) MAINTENANCE:**

The smoke alarm is virtually maintenance free. However, under dusty conditions, a vacuum hose may be used to clear the sensing chamber of dust.

**Clean the smoke alarm at least once a month** to remove dust, dirt, insects or debris. Always disconnect the battery power to smoke alarm before cleaning. Using a soft brush or wand attachment to a vacuum cleaner, vacuum all sides and cover of smoke alarm. Be sure all the vents are free of debris.

**OPTIONAL BATTERY DRAWER TAMPER LOCKING PIN:** To make your battery drawer tamper resistant, a locking pin has been provided (breakaway part on mounting bracket).

**NOTE:** If this feature has been activated, you will need to deactivate it by removing the battery drawer tamper pin located at side of battery drawer. Refer to Page 4.

Pull the QUICK DRAW<sup>®</sup> battery drawer open and remove the battery. While observing polarity, push the replacement battery into the battery drawer until it is held securely in place. Carefully close the battery drawer and reinstall the tamper pin.

Test the smoke alarm by pushing the TEST button on the smoke alarm cover until the alarm sounds, then release.

## BATTERY REPLACEMENT

The smoke alarm uses a 9 Volt battery. The battery should last for at least one year under normal operating conditions. The smoke alarm has a low battery indicator, an audible beep or chirp. It will operate at approx. 40 second intervals for a minimum of 7 days. When this indication occurs, replace the battery with an Alkaline type (Eveready Energizer #522, Duracell #MN1604) or Lithium type (Ultralife U9VL-J or Ultralife V9VL-J-P) from your local retailer.

LITHIUM Battery Models only - The LITHIUM battery is warranted to last for 10 years under normal operating conditions. Replace the battery with only LITHIUM type: (ULTRALIFE: U9VL-J)

## REPAIRS AND SERVICES

This smoke alarm contains less than 1 microcurie (37 kilobecquerel) of Americium 241, a radioactive material. **The distribution of these ionization-type smoke alarms is licensed by the U.S. Nuclear Regulatory Commission; the consumer is exempt from any licensing or requirements.** If the smoke alarm is defective in any way, do not tamper with the smoke alarm. Return the smoke alarm for servicing. (See warranty for instructions or in-warranty returns.) There will be a service charge for repairing out of warranty smoke alarms.

## DEVELOP AND PRACTICE A PLAN OF ESCAPE

### BASICS OF ESCAPE PLAN

- o Make a floor plan indicating all doors and windows and at least two escape routes from each room. Second story windows may need a rope or chain ladder.
- o Have a family meeting and discuss your escape plan, showing everyone what to do in case of fire.
- o Determine a place outside your home where all of you can meet if a fire occurs.
- o Familiarize everyone with the sound of the smoke alarm and train them to leave your home when they hear the sound.
- o Identify children's bedrooms with red stickers placed in the upper left corner of the windows. They are available from your local fire department.
- o Practice a fire drill at least every six months. Practice allows you to test your plan before an emergency. You may not be able to reach your children. It is important they know what to do!

### WHAT TO DO WHEN THE ALARM SOUNDS

- o Leave immediately by your plan of escape. Every second counts, so don't waste time getting dressed or picking up valuables.
- o In leaving, don't open any inside door without first feeling its surface. If hot, or if you see smoke seeping through cracks, **don't open that door!** Instead, use your alternate exit. If inside door is cool, place your shoulder against it, open it slightly and be ready to slam it shut if heat and smoke rush in.
- o Stay close to the floor if air is smoky. Breathe shallowly through a cloth, wet if possible.
- o Once outside, go to your selected meeting place and make sure everyone is there.
- o Call the fire department from your neighbor's home – **not from yours!**
- o Don't return to your home until fire officials say that it is all right to do so.

### NATIONAL FIRE PROTECTION ASSOCIATION REQUIRED INFORMATION

For your information, the National Fire Alarm Code, NFPA 72, reads as follows:

"11.5.1 \*Required Detection - Where required by applicable laws, codes, or standards for a specific type of occupancy, approved single and multiple-station smoke alarms shall be installed as follows:

- (1) \*In all sleeping rooms and guest rooms
- (2) \*Outside of each separate dwelling unit sleeping area, within 6.4 m (21 ft) of any door to a sleeping room, the distance measured along a path of travel
- (3) On every level of a dwelling unit, including basements.
- (4) On every level of a residential board and care occupancy (small facility), including basements and excluding crawl spaces and unfinished attics
- (5) \*In the living area(s) of a guest suite
- (6) In the living area(s) of a residential board and care occupancy"

The equipment should be installed using wiring methods in accordance with the National Fire Protection Association's Standard 72.

(National Fire Protection Association, Batterymarch Park, Quincy, MA 02269)

## FCC PART 15 RADIO FREQUENCY DEVICES

This equipment has been tested and found to comply with the limits for a Class B digital device pursuant to part 15 of the FCC Rules. These limits are designed to provide reasonable protection against harmful interference in a residential installation. This equipment generates, uses and can radiate radio frequency energy and, if not installed and used in accordance with the instructions, may cause harmful interference to radio communications. However, there is no guarantee that interference will not occur in a particular installation. If this equipment does cause harmful interference to radio or television reception, which can be determined by turning the equipment off and on, the user is encouraged to try to correct the interference by one or more of the following measures:

- Reorient or relocate the receiving antenna.
- Increase the separation between the equipment and receiver.
- Connect the equipment into an outlet on a circuit different from that to which the receiver is connected.
- Consult the dealer or an experienced radio/TV technician for help.

### **CAUTION (AS REQUIRED BY THE CALIFORNIA STATE FIRE MARSHAL)**

\*Early warning fire detection is best achieved by the installation of fire detection equipment in all rooms and areas of the household as follows. A smoke alarm installed in each separate sleeping area (in the vicinity of, but outside of the bedrooms), and heat or smoke detectors in the living rooms, dining rooms, bedrooms, kitchens, hallways, attics, furnace rooms, closets, utility and storage rooms, basements and attached garages.

## OPERATIONAL SUMMARY

CONDITION OF ALARM AUDIBLE & VISUAL SIGNALS BEFORE SOLUTION / RECOMMENDATION		
HORN	RED LED	SOLUTION / RECOMMENDATION
Silent	Blinks On once approx every 40-45 seconds	DC Power is present.
3 Beeps, 2 second pause, Repeat	Blinks On approx every 2 seconds	Originating smoke alarm - If hazard is identified, please take all precautions if an alarm sounds by calling an Emergency Service and getting out of the home.
3 Beeps, 2 second pause, Repeat	Blinks On approx every 2 seconds	Nuisance Alarm - If there is no hazard present, verify the alarm is mounted in the correct location (see User's Manual, "AVOID THESE LOCATIONS" section). Reset alarm as instructed below.
3 Beeps, 2 second pause, Repeat	Blinks On approx every 2 seconds	Silence Feature is activated by pressing and releasing the Test/Silence button on the initiating alarm while in alarm condition. Silence mode will last for 8-12 minutes.
Silent (alarmed previously)	Blinks On once approx every 40-45 seconds (normal operation mode) or Blinks on once approx every 10 seconds (silence mode)	QUICK FIND® Alarm Origination - To initiate QUICK FIND®, press the Test/Silence button on any alarm; and, after releasing the button, the originating alarm will continue to sound for approx 60 seconds. Reset the originating alarm.
Silent	Blinks On once approx every 40-45 seconds (normal operation mode) or Blinks On once approx every 10 seconds (silence mode)	To Reset the Alarm - Hold the Test/Silence button for 10 seconds, or temporarily remove (and then replace) the battery. This will clear alarm origination and clear Silence mode. Reset after each smoke alarm event.
1 Chirp every 40 seconds	Blinks On once approx every 40-45 seconds	Low Battery - Check to make sure the battery activation pull-tab has been completely removed, battery polarity is correct and the battery terminals are making contact with the smoke alarm contacts in the battery drawer. If chirp continues, replace the 9V battery (see User's Manual for recommended battery types).
3 Beeps approx every 40 seconds after LED flashes	Blinks On once approx every 40-45 seconds	Trouble/Service Alarm. Replace Alarm.
1 Beep approx every 60 seconds	Blinks On once approx every 40-45 seconds	End-of-Service Life alarm. The alarm should be replaced immediately.



**TEN YEAR LIMITED WARRANTY**  
**MODELS MPI305, MPI305L**  
**MODELS MPI505, MPI505L**

**USI ELECTRIC, INC./UNIVERSAL SECURITY INSTRUMENTS, INC. ("USI") warrants your USI product to be free from defects in material and workmanship for a period of ten (10) years from the date of purchase.** This warranty shall not apply to any batteries used in the product or to any damage which may be caused by such batteries.

**TEN YEAR LITHIUM BATTERY LIMITED WARRANTY\* (MODELS MPI305L)**

**USI warrants your USI product to be free from defects in material and workmanship for a period of ten (10) years from the date of purchase.** This warranty applies only to the original consumer purchaser and only to products used in normal residential use and service. If this product is found to be defective, USI's only obligation, and your exclusive remedy, is the repair or replacement of the product, at USI's discretion, provided that the product has not been damaged through misuse, abuse, accident, modifications, alteration, neglect or mishandling. This Warranty shall not apply to any product which is found to have been improperly installed, set-up, or used in any way not in accordance with the instructions supplied with the product.

This battery is warranted by Ultralife Batteries, Inc. for a 10 year life\* ONLY in this smoke alarm and is not warranted in any other device. Improper handling and/or installation of the battery voids the warranty. Improper handling and/or installation includes, but is not limited to:

- A. Reversing the battery's polarity or connecting the battery's "+" and "-" terminals incorrectly.
- B. Short circuiting the battery.
- C. Attempting to charge the battery.
- D. Subjecting the battery to excessive humidity, hot or cold conditions.
- E. Altering the battery physically in any way.

**ULTRALIFE 9 VOLT BATTERY RETURNS:**

To return the Ultralife Battery under warranty, send battery *ONLY* along with a note describing nature of difficulty and proof of date of purchase, postage prepaid and return postage to:

ULTRALIFE BATTERIES, INC.  
C/O UNIVERSAL SECURITY INSTRUMENTS, INC.  
P. O. BOX 622  
1350 ROUTE 88 SOUTH  
NEWARK, NEW YORK 14513 USA

**SMOKE ALARM RETURNS:**

For replacement of the smoke alarm *ONLY* under the terms of this Warranty, contact our Customer Service line at 1-800-390-4321, Ext. 238, for current postage and handling fees. **USI DOES NOT WARRANT AND SPECIFICALLY DISCLAIMS ANY WARRANTY, WHETHER EXPRESS OR IMPLIED, OF FITNESS FOR A PARTICULAR PURPOSE, OTHER THAN THE WARRANTY CONTAINED HEREIN. NO IMPLIED WARRANTY ON THIS PRODUCT, CREATED BY STATE LAW, SHALL EXTEND BEYOND THE TERM OF THIS WARRANTY UNLESS SUCH LAW OTHERWISE PROVIDES. USI SPECIFICALLY DISCLAIMS ANY LIABILITY AND SHALL NOT BE LIABLE FOR ANY CONSEQUENTIAL OR INCIDENTAL LOSS OR DAMAGE, INCLUDING, BUT NOT LIMITED TO, DAMAGES TO ANY EQUIPMENT WITH WHICH THIS PRODUCT IS USED.**

Some states do not allow the exclusion or limitation of incidental or consequential damages so the above limitations or exclusions may not apply to you.

No agent, representative, dealer, or employee of the company has the authority to increase or alter the obligations or terms of this Warranty.

This Warranty gives you specific legal rights and you may also have other rights which vary from state to state.

This Warranty is only valid for merchandise purchased from outlets in the United States and Canada. This warranty expires upon end-of-service life signal.

\*DISCLAIMER: WARRANTY IS NOT A PERFORMANCE CLAIM.

Visit Us on the Web! [www.UniversalSecurity.com](http://www.UniversalSecurity.com)

**UNIVERSAL<sup>®</sup>**

11407 Cronhill Drive, Suite A  
Owings Mills, Maryland 21117 USA

## Free Manuals Download Website

<http://myh66.com>

<http://usermanuals.us>

<http://www.somanuals.com>

<http://www.4manuals.cc>

<http://www.manual-lib.com>

<http://www.404manual.com>

<http://www.luxmanual.com>

<http://aubethermostatmanual.com>

Golf course search by state

<http://golfingnear.com>

Email search by domain

<http://emailbydomain.com>

Auto manuals search

<http://auto.somanuals.com>

TV manuals search

<http://tv.somanuals.com>