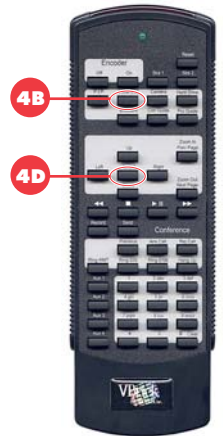
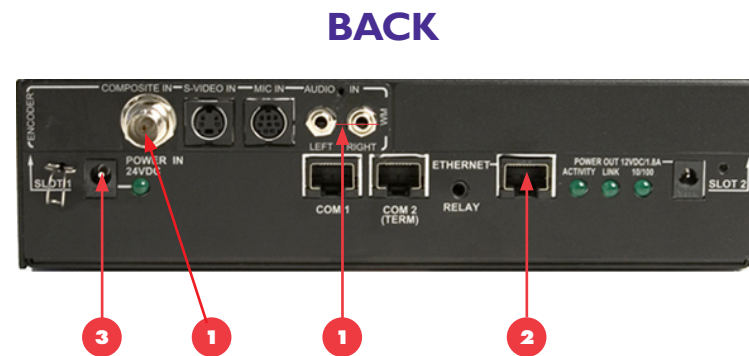


# Quick Start Guide

## Using StreamPlayer

# VB6000 WM Network Appliance

### Unpack VBrick Appliance. Each Shipment Includes:



# 1

## Connect Video Input Source

An audio/video cable allows the VBrick appliance to receive audio/video from your input source (a camera, VCR, DVD, etc.)

**Please make sure that all power switches are Off on all source equipment before plugging into the connectors on the VBrick appliance.**

1. From a video input source (for example, a camera, DVD, or VCR), connect a BNC (composite video) cable to **Composite In** on Slot 1 of the VBrick appliance.
2. Connect **Left** and **Right** cables from the audio source to **Audio In** on the appliance.

# 2

## Connect to the IP Network

An Ethernet cable connects the VBrick to the network.

1. Plug one end of the cable into the Ethernet port on the VBrick appliance.
2. Plug the other end of the cable into the network switch.
3. When power is applied, the green LEDs to the right of the Ethernet port will illuminate and the **Activity** light will flicker.

### System Requirements

- Ethernet LAN
- Multicast IGMP Version 2
- Windows 98, 2000, XP (Service Pack 2 recommended)
- 500 MHz Pentium III processor (750 MHz recommended)
- 128 MB RAM
- SVGA video card 640x480, 256 colors (acceleration recommended)
- Windows-compatible sound device
- Minimum 15 MB hard disk space for installation
- Microsoft Internet Explorer 6.0 or higher
- Microsoft DirectX Media 8.1 or higher (9.0 recommended)
- Microsoft Windows Media Player Version 7.1 (Windows 98 or 2000), 9.0 or higher (Windows XP only)

# 3

## Power-on the Appliance

When powered-on, the VBrick appliance automatically runs through a self-test.

1. Insert the power connector that comes with the unit into the power receptacle on the rear of the appliance.
2. Connect the other end to a conventional 110/220 VAC power source.
3. The **Power In** LED on the back of VBrick will illuminate and the front panel will display status messages during the self-test.
4. **Wait until the appliance completes its boot sequence before continuing.** This may take several minutes.

**Note:** The *WM Appliance Admin Guide* provides a detailed description of product features and functions. It's available from the **Support** pages at [www.VBrick.com](http://www.VBrick.com) or it can be accessed from the Help link in the IWS configuration program.

# 4

## Set the IP Address

When you power on the appliance, if a DHCP server is present on your network, the VBrick will automatically get its **IP Address** and **Subnet Mask** from the DHCP server. If this happens, no additional configuration is required; go to Step 5 and install StreamPlayer Plus. If the VBrick cannot get an IP address from the DHCP server (or a server is not present), you will need to set the IP address manually using the handheld IR Remote Control. Similarly, if your network requires a **Gateway IP Address**, and this is not provided by the DHCP server, you will also need to enter this manually.

1. Aim the remote control at the IR Port (reference 4A) on the front panel and press **Local Edit** (reference 4B). The display (reference 4C) on the front of the VBrick will request a password.
2. Press 23646 ("admin", numerically) and press **Select** (reference 4D) on the remote control.
3. If the network is DHCP capable and you want the network to select an IP address press **Y** and then press **Select**. The VBrick will reboot and obtain an IP address. Otherwise, press **Select** to continue.
4. Enter desired IP address. Use the \* button for the decimal point and the left/right buttons to erase characters entered by mistake.
5. When done press **Select**. If the remaining settings do not need to be modified, press **Select** again.
6. If the IP, subnet mask or gateway addresses have been modified and there are no errors, the VBrick will reboot.
7. Log back in to the VBrick using the Remote Control.
8. Set the **Slot1 destination IP Address** to a valid multicast address.

**Note:** The standard multicast address range is 224.0.0.0 to 239.255.255.255. VBrick recommends using 225.1.1.1 as a starting multicast address.

# 5

## Install StreamPlayer Plus

StreamPlayer Plus 4.3 or higher lets you receive streaming video, originating from the VBrick, on a local PC.

1. If you did not order StreamPlayer you can purchase and download a full copy or you can download and install an evaluation copy.
2. To download StreamPlayer go to [www.vbrick.com/products/streamplayer.asp](http://www.vbrick.com/products/streamplayer.asp) and follow the instructions.
3. After you download StreamPlayer, follow the instructions and install the application as directed.

**Note:** This Quick Start Guide references the following WM Appliance models:

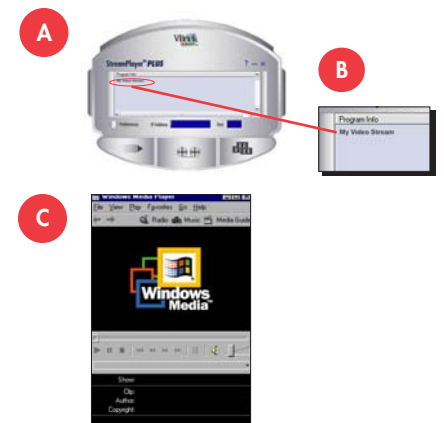
- 9190-4200-000x – Single WM Encoder
- 9190-4200-100x – Single WM Encoder with Hard Drive
- 9190-4300-000x – Dual WM Encoder
- 9190-4300-100x – Dual Encoder with Hard Drive

# 6

## Verify Operation

Once installed, you can use the StreamPlayer Plus application to view content being streamed from the VBrick appliance.

1. Launch the StreamPlayer Plus application. Go to **Start > Programs > VBrick > StreamPlayer Plus**.
2. The VBrick appliance automatically broadcasts program information (reference A) to the StreamPlayer application running on your PC.
3. You should see a stream appear in the **Program Info** column (reference B) of the StreamPlayer application. The default host name of the VBrick is the unit's MAC address.
4. Double-click on VBrick's MAC address (or host name) to launch the stream in Windows Media Player (reference C) and displays the selected video stream on your PC.
5. You are now successfully streaming video to your PC.

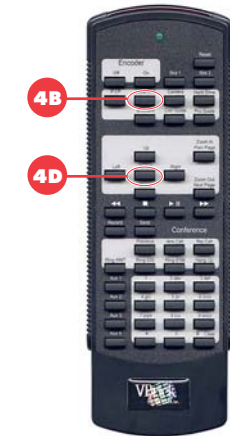
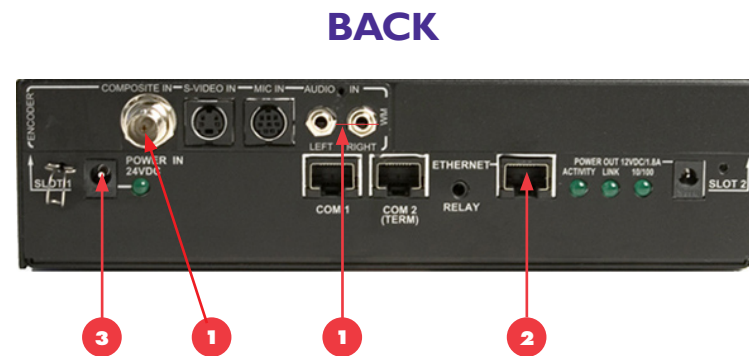


# Quick Start Guide

## Using Windows Media Player

# VB6000 WM Network Appliance

### Unpack VBrick Appliance. Each Shipment Includes:



## 1

### Connect Video Input Source

An audio/video cable allows the VBrick appliance to receive audio/video from your input source (a camera, VCR, DVD, etc.)

**Please make sure that all power switches are Off on all source equipment before plugging into the connectors on the VBrick appliance.**

1. From a video input source (for example, a camera, DVD, or VCR), connect a BNC (composite video) cable to **Composite In** on Slot 1 of the VBrick appliance.
2. Connect **Left** and **Right** cables from the audio source to **Audio In** on the appliance.

## 2

### Connect to the IP Network

An Ethernet cable connects the VBrick to the network.

1. Plug one end of the cable into the Ethernet port on the VBrick appliance.
2. Plug the other end of the cable into the network switch.
3. When power is applied, the green LEDs to the right of the Ethernet port will illuminate and the **Activity** light will flicker.

#### System Requirements

- Ethernet LAN
- Windows 98, 2000, XP (Service Pack 2 recommended)
- 500 MHz Pentium III processor (750 MHz recommended)
- 128 MB RAM
- SVGA video card 640x480, 256 colors (acceleration recommended)
- Windows-compatible sound device
- Minimum 15 MB hard disk space for installation
- Microsoft Internet Explorer 6.0 or higher
- Microsoft DirectX Media 8.1 or higher (9.0 recommended)
- Microsoft Windows Media Player Version 7.1 (Windows 98 or 2000 only), 9.0 or higher (Windows XP only)

## 3

### Power-on the Appliance

When powered-on, the VBrick appliance automatically runs through a self-test.

1. Insert the power connector that comes with the unit into the power receptacle on the rear of the appliance.
2. Connect the other end to a conventional 110/220 VAC power source.
3. The **Power In** LED on the back of VBrick will illuminate and the front panel will display status messages during the self-test.
4. **Wait until the appliance completes its boot sequence before continuing.** This may take several minutes.

**Note:** The *WM Appliance Admin Guide* provides a detailed description of product features and functions. It's available from the **Support** pages at [www.VBrick.com](http://www.VBrick.com) or it can be accessed from the Help link in the IWS configuration program.

## 4

### Set the IP Address

When you power on the appliance, if a DHCP server is present on your network, the VBrick will automatically get its **IP Address** and **Subnet Mask** from the DHCP server. If this happens, no additional configuration is required; go to Step 5 and verify operation. If the VBrick cannot get an IP address from the DHCP server (or a server is not present), you will need to set the IP address manually using the handheld IR Remote Control. Similarly, if your network requires a **Gateway IP Address**, and this is not provided by the DHCP server, you will also need to enter this manually.

1. Aim the remote control at the IR Port (reference 4A) on the front panel and press **Local Edit** (reference 4B). The display (reference 4C) on the front of the VBrick will request a password.
2. Press 23646 ("admin", numerically) and press **Select** (reference 4D) on the remote control.
3. If the network is DHCP capable and you want the network to select an IP address press **Y** and then press **Select**. The VBrick will reboot and obtain an IP address. Otherwise, press **Select** to continue.
4. Enter desired IP address. Use the \* button for the decimal point and the left/right buttons to erase characters entered by mistake.
5. When done press **Select**. If the remaining settings do not need to be modified, press **Select** again.
6. If the IP, subnet mask or gateway addresses have been modified and there are no errors, the VBrick will reboot.

## 5

### Verify Operation (HTTP/Unicast)

Windows Media Player lets you receive streaming video originating from the VBrick appliance on a PC.

1. Login to the VBrick IWS configuration utility (e.g. <http://ipaddressofvbrick>) using the default user name and password (admin/admin).
2. Go to **Configuration: Encoder > Server**.
3. Press the **Begin Edit** button to become the active editor.
4. Press **Click here to play HTTP** to launch a stream in Windows Media Player (assuming you connected to a video source in Step 1).
5. If the stream runs in Windows Media Player you are successfully streaming HTTP/Unicast audio and video to the PC.

**Note:** This Quick Start Guide references the following WM Appliance models:

- 9190-4200-000x – Single WM Encoder
- 9190-4200-100x – Single WM Encoder with Hard Drive
- 9190-4300-000x – Dual WM Encoder
- 9190-4300-100x – Dual Encoder with Hard Drive

## Free Manuals Download Website

<http://myh66.com>

<http://usermanuals.us>

<http://www.somanuals.com>

<http://www.4manuals.cc>

<http://www.manual-lib.com>

<http://www.404manual.com>

<http://www.luxmanual.com>

<http://aubethermostatmanual.com>

Golf course search by state

<http://golfingnear.com>

Email search by domain

<http://emailbydomain.com>

Auto manuals search

<http://auto.somanuals.com>

TV manuals search

<http://tv.somanuals.com>