

# VDO

## CYCLECOMPUTING

*BEDIENUNGSANLEITUNG*

*INSTRUCTION MANUAL*

*MANUEL D'INSTALLATION ET D'UTILISATION*

*MANUALE D'INSTALLAZIONE E FUNZIONAMENTO*

*INSTALACION Y OPERACIÓN MANUAL*

*HANDLEIDING*

*NÁVOD K MONTÁŽI A OBSLUZE*

*INSTRUKCJA OBSLUGI LICZNIKA*

*INSTALLATIONS OG BETJENINGSVEJLEDNING*

*BRUKSANVISNING*

*BRUKSANVISNING*

*ASENNUS JA KÄYTTÖOHJEKIRJA*

**C05+**

## INSTALLATION AND OPERATION MANUAL - VDO CYTEC C05+

GB

### Preface

Thank you for buying a VDO CYTEC bicycle computer. The more familiar you get with this model, the more enjoyable your trips are going to be. Please read thoroughly all the information provided in this manual. You are getting important and useful hints for operation to make you fully benefit from all the technical features of your VDO CYTEC bicycle computer.

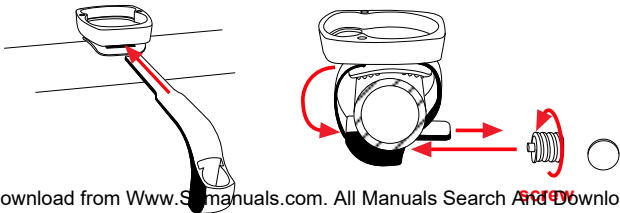
We wish you enjoyable trips and rides on your bike with VDO CYTEC  
CYCLE PARTS GMBH

### 1. Mounting the system

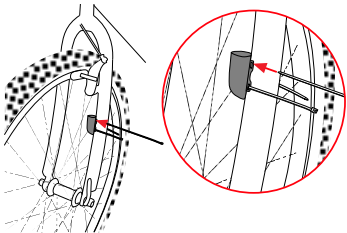
#### 1.1 Mounting the handlebar holder

The handlebar holder fits handlebars of any diameter. Before mounting the system, decide if you will be using your left or right hand to operate the computer and then mount the handlebar holder on the respective side. Position the handlebar holder, insert the strap and adjust it by tightening the screw.

**Warning:** Before tightening the handlebar holder, make sure to adjust the position of the computer head (inclination) when the LCD-display is best visible for you. Only when you find the best position tighten the screw.



Download from [www.S-manuals.com](http://www.S-manuals.com). All Manuals Search And Download.



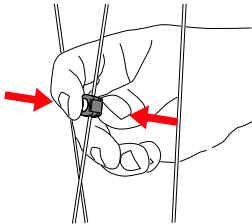
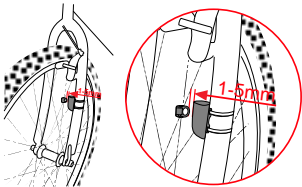
### 1.2 Mounting the speed transmitter / sender

The sensor should be mounted on the same side of the fork as the holder is on the handlebar. Make sure to position the respective rubber shim between fork and sender, position the curved back of the sender next to the spokes and make sure the sender is aimed at the receiver (computer head).

**Important:** Do not tighten the cable ties yet. Accurately position the sensor and the spoke magnet first, then tighten the cable ties.

### 1.3 Mounting the spoke magnet

Distance between magnet and sensor should be approx. 1-5 mm.



In case this distance is not achievable in the current positioning, slide the sensor and the magnet on the fork or spoke accordingly.

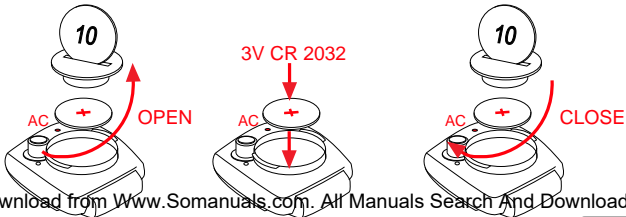
**Watch out:** Please remove the computerhead from the handlebar holder when you intend not to use your

Download from [www.Softmanuals.com](http://www.Softmanuals.com). All Manuals Search And Download.

#### 1.4 Installing battery into computer head

To save battery power, your VDO CYTEC C05+ comes with the battery not yet fitted. Prior to initial use you have to install the battery first. Insert battery with positive (+) end on top.

**Watch out:** Once the battery is properly fitted, the computer **immediately** changes into set-up mode (see also chapter 5). If you find the computer is not functioning properly after a battery change, push the AC-button (Auto Clear) on the rear side of the computer to reset.



Download from [www.Somanuals.com](http://www.Somanuals.com). All Manuals Search And Download.

### 1.5 Function Indicator

Your VDO CYTEC C05+ features a function indicator ((1)).

When you are done mounting the computer, ((1)) flashes at the first rotation of the wheel.

When the wheel-size is properly entered, actual speed is displayed as well.(see chapter 5).

In case the function-indicator ((1)) is **not** flashing, please **double-check**:

Is the computer properly fitted onto the handlebar holder?

Is the spoke magnet accurately positioned opposite the speed transmitter (max 5 mm distance)?

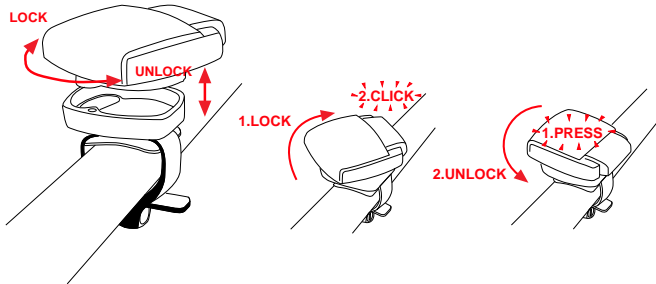
### 2. Twist-Click mounting of computer onto holder

The Twist-Click mounting has been exclusively developed for the new line of VDO CYTEC computers. The computerhead is put onto the handlebar and by a right turn of the computerhead (**TWIST**) fixed to the holder (**CLICK**).

It is just as easy to remove the computerhead from the handlebar holder.

Slightly push the computerhead down, twist it to the **left**, remove computerhead from handlebar holder.

Download from [Www.Somanuals.com](http://www.Somanuals.com). All Manuals Search And Download.



Download from [Www.Somanuals.com](http://www.Somanuals.com). All Manuals Search And Download.



### 3. Information features of your VDO CYTEC C05+

Your VDO CYTEC C05+ provides you with following information:

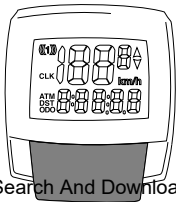
<b>KMH-MPH</b>	current speed indicated in either KMH or MPH, featuring automatic conversion into MPH
<b>DST</b>	trip counter, counts your trip distance up to 999,99 km or miles.
<b>ATM</b>	trip timer, keeps track of the actual riding time featuring automatic start/stop function, up to 9:59:59 (hrs:min:sec)
<b>CLK</b>	clock with 24 h display mode.
<b>ODO</b>	odometer, counting distance ridden up to 99,999 KM or M.

### 4. Operating your VDO CYTEC C05+

#### Button / Key Covering

Your VDO CYTEC C05+ has 1 operating button / key

Function
DST
ATM
CLK
ODO



Download from [Www.Somanuals.com](http://www.Somanuals.com). All Manuals Search And Download.

This button / key has several functions.  
All functions of the button / key are outlined in the chart below.

Your display indicates following information	Button / Key to be pushed	Length of pushing the button / key	What is going on?
DST-ODO-CLK-ATM	push MODE key	brief (0.1 sec)	next information from DST or ODO or ATM is indicated.
ODO	push MODE key	long (5 sec)	enter set-up mode for wheelsize <b>and</b> odometer
CLK	push MODE key	long (5 sec)	enter set-up mode for clock
DST	push MODE key	long (5 sec)	DST and ATM are simultaneously reset to ZERO

**Watch out:** To avoid resetting DST and ATM by mistake, thoroughly check the information in display before you push the MODE key for 5 sec.

### 5. Set-up mode

Your VDO CYTEC C05+ features the following set-up procedures

**Watch out:** Once the battery is properly fitted, your VDO CYTEC C05+ **immediately** changes into set-up mode (see also chapter 5.3).

wheelsize = WS set-up starts out of ODO in display  
 clock = CLK set-up starts out of CLK in display  
 odometer = ODO set-up starts out of ODO in display

### 5.1 Programming (setting up) your wheelsize

In order for the VDO CYTEC C05+ to indicate your actual speed and your trip distance, the correct wheelsize has to be entered. Wheelsize is the outer circumference of the wheel including the tire.

following default is entered  
wheelsize = WS = 2124 mm

**Watch out:** Above default is automatically applied after a battery change. After a battery change, the correct wheelsize for your bike has to be reentered, should you want to have accurate speed displayed, according to your bike's wheelsize.

### 5.2 How is the wheelsize precisely determined??

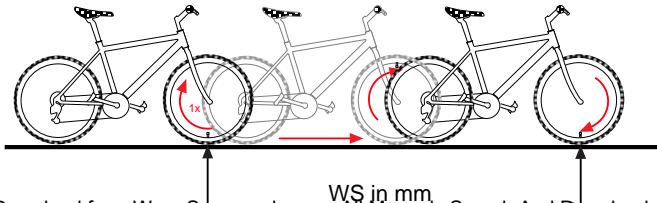
Place the front wheel of your bike with the valve at the bottom, mark this position with a line and push your bike ahead until exactly one rotation of the front wheel is completed. Draw another line where the valve now is. Take a ruler and measure the distance between marks 1 and 2 which reflects the wheelsize = wheel-circumference. The figure measured (in mm) is the wheelsize to be entered into your computer.

**Watch out:** In case you have selected MPH readout you must enter your wheelsize in mm.

Download from [Www.Somanuals.com](http://www.Somanuals.com). All Manuals Search And Download.

**Watch out:** In case you have selected MPH readout you must enter your wheelsize in mm.

GB



Download from [Www.Somanuals.com](http://www.Somanuals.com). All Manuals Search And Download.

### 5.3 Entering your wheelsize / entering odometer

After initially installing the battery or after a battery change, your VDO CYTEC C05+ automatically switches into set-up mode for wheelsize and odometer.

**Start with Step 3.**

**You might as well enter the set-up mode for wheelsize and odometer at any time by proceeding as follows:**

**Step 1:** Call ODO information in your display.

**Step 2:** Press MODE button for 5 sec. Display shows an alternating flashing symbol for KMH and MPH.

**Step 3:** By pressing the MODE button you can choose whether you want MPH or KMH readout on your display. Now you have determined whether your VDO CYTEC C05+ is either measuring in kilometers or miles.

**Step 4:** Once you have chosen your measuring unit, the wheelsize value is displayed. After a battery change, the default value (**2124**) comes up. In case you have entered wheelsize set-up from ODO (see step 1), the last value entered will come up.

**In case you want to use the default value (2124) after a battery change, just press the MODE button within 2 seconds.**

The default is then automatically set up and the computer returns to regular mode.

Download from [www.Somanuals.com](http://www.Somanuals.com). All Manuals Search And Download.

**In case you wish to enter the precise wheelsize you have measured yourself (i.e. 2257), please proceed with step 5.**

**Step 5:** Not pressing the MODE button within 2 seconds will make the last digit (2124) flash and change the value (4-5-6-7...) Once the correct digit (**7**) comes up, press the mode button. Now the third digit flashes and changes its value (2127). Once the correct digit (**5**) comes up, press the mode button. Next to flash is the second digit (2157). Once the correct digit (**2**) comes up, press the mode button. Next to flash is the first digit (2257).

**Step 6:** When the wheelsize is completely entered, the computer automatically changes into set-up mode for odometer value. Here you enter your previous totals after a battery change.

In case you do **not** wish to enter an odometer value, press the MODE button **five times**. Thereby you exit the set-up mode and the computer returns to regular display.

For entering an odometer value, wait for the last digit to flash (12345) and automatically change its value. Once the desired digit comes up, press the mode button. Next to flash is the fourth digit (12345). Once the desired digit comes up, press the mode button. Proceed until you are done with the first digit, the computer then will return to regular display mode.

## Set ODOMETER



Press to Stop  
switch to next



Press to Stop  
switch to next



Press to Stop  
switch to next



Press to Stop  
switch to next



Press to Stop  
switch to next



Press to Stop  
switch to next  
until counting



Press 5 sec.  
to start

Press to select

Press to switch



Press to Stop  
switch to next



Press to Stop  
switch to next



Press to Stop  
switch to next



Press to Stop  
switch to next  
5 times to end



Return to  
main Display



Download from [www.Somanuals.com](http://www.Somanuals.com) All Manuals Search And Download.

## 5.4 Setting the clock CLK

Your VDO CYTEC C05+ features a clock with hour and minute display in 24 h mode. To access the clock set-up mode proceed as follows:

**Step 1:** call in the CLK information into your display

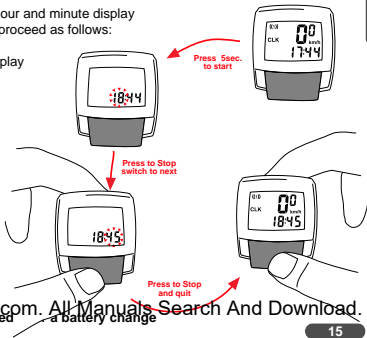
**Step 2:** Press the MODE button for 5 sec.

The set-up mode for the clock starts.

You will see the digit flashing and changing its value (14...15...16).

**Step 3:** Once the correct hour figure is flashing (i.e. 15), press the MODE button, then the minute figure is flashing and changing its value.

**Step 4:** Once the correct minute value is flashing, press the MODE button, the computer will then return to regular display mode.



Download from [www.Somanuals.com](http://www.Somanuals.com). All Manuals Search And Download.

Watch out! The time (CLK) has to be reentered

a battery change



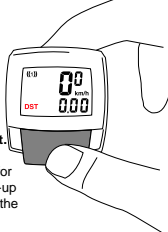
## 6. Resetting information to zero

The following information may be reset to zero with your VDO CYTEC C05+:  
DST = trip distance                      ATM = trip counter

**Watch out:** Both these information are **simultaneously** reset to zero

To reset either DST or ATM, one of these informations has to be displayed.  
Resetting to zero is done by pressing the **MODE** button for five seconds straight.

**Watch out:** When you have ODO or CLK in display and you press the MODE button for five seconds you are entering the wheelsize set-up mode or the clock set-up mode. Make sure you have either DST or ATM in display before pressing the MODE button for five seconds.



## 7. Stand-by-mode

Your computer VDO CYTEC C05+ features a stand-by-mode in order to save battery power. Your computer changes into stand-by-mode if it has not received any speed impulses for 5 min or no button has been pressed in the same period of time. The time of day (CLK) is still displayed in stand-by-mode, though.

By pressing any button or just continuing your ride, this will end stand-by-mode and return you to the appropriate mode.

Download from [www.Somanuals.com](http://www.Somanuals.com). All Manuals Search And Download.

## 8 . Battery change

**Tip:** Take down your total distance and wheelsize prior to battery change.

### 8.1 Changing the battery in the computer head

see chapter 1.4.

**Watch out:** old batteries require special disposal



## 9. Troubleshooting

This chart outlines possible malfunctions, their causes and solutions.

malfunction	possible cause	solutions
speed display does not appear	check for proper distance between sensor and magnet	readjusting distance between sensor and magnet
	sender battery empty	check battery power and replace if necessary.
	computerhead is incorrectly twisted on handlebar holder	place computerhead on handlebar holder and twist until detent (CLICK)
	no wheelsize entered	enter your wheelsize
display fades or disappears	sender is too distant from computerhead	mount sender closer to computerhead
	battery in computer empty	check battery power and replace it if necessary
	temperatures below 5° C (40° F) dull display readout	back in normal temperatures, display picks up working correctly

## 10. Warranty

We warrant VDO CYTEC models (sensor, computer head and handlebar holder) to the original purchaser for five years from date of purchase against defects in material and workmanship. **This does not cover the batteries and defects resulting from normal wear and tear, improper care, accidents, abuse or alteration.**

Please take care to retain your receipt of purchase.

In case of legitimate complaints, you are entitled to receive a comparable replacement model. Due to possible model changes, your model might not be available any more.

You may contact your retailer or store where you purchased your VDO CYTEC or send the computer directly to us:

CYCLE PARTS GMBH  
Grosse Ahlmuehle 33  
76865 Rohrbach / Germany

In case of technical queries, call our consumer-service-hotline Tel. +49-6349-9635-10

Technical specifications of VDO CYTEC C05+ are subject to change.

Download from [www.Somanuals.com](http://www.Somanuals.com). All Manuals Search And Download.

## Contents

- 1 computer head
- 1 handlebar holder with screw
- 1 wireless transmitter with battery 12 V, type V23GA
- 1 rubber shim for sensor mount
- 1 spoke magnet
- 5 cable ties
- 1 battery 3 V, type CR 2032
- 1 installation and operation manual

### TIP

The CYTEC tin box easily holds a mini-tool and a spare tube to carry on with your ride.

## Free Manuals Download Website

<http://myh66.com>

<http://usermanuals.us>

<http://www.somanuals.com>

<http://www.4manuals.cc>

<http://www.manual-lib.com>

<http://www.404manual.com>

<http://www.luxmanual.com>

<http://aubethermostatmanual.com>

Golf course search by state

<http://golfingnear.com>

Email search by domain

<http://emailbydomain.com>

Auto manuals search

<http://auto.somanuals.com>

TV manuals search

<http://tv.somanuals.com>