

READ AND SAVE THESE IMPORTANT INSTRUCTIONS

# Venta-Airwasher User Manual

For models LW 44, LW 24, LW 14



**venta**<sup>®</sup>  
**AIRWASHER**  
Made in Germany

## **Dear Customer,**

Thank you for choosing the Venta-Airwasher humidifier and purifier. The Venta-Airwasher does away with the inconvenience of filterpads. With its humidification and purification system, Venta represents a revolutionary and worldwide unique technology. There are no filterpads to become contaminated. Water is the filter which is renewed daily. If maintained properly, the Venta-Airwasher will consistently provide high humidifying and purifying performance for many years.

### **Why is the Venta humidification and purification system a revolutionary, unique technology?**

- 1** It cleans and improves dry indoor air by washing it with water. No filterpads, no vaporization, no ions, no ozone, and no problems with white dust.
- 2** It automatically adds vital humidity through cold evaporation, recognized as the best method.
- 3** No endless cost of replacing dirty filterpads. Water is the filter, fresh every day, cleans consistently and always with the same high efficiency.

### **Why is humidification plus purification a superior method to clean the air?**

Dry air is difficult to clean. Humidification plus purification is far more effective. Many airborne particles fall to the floor when moistened. Impurities of the air and odors are trapped in the water and eliminated while pure water evaporates.

Your investment in the Venta-Airwasher humidifier will certainly prove worthwhile. Dry mucous membranes cannot intercept bacteria and stale tobacco smoke imposes a strain on the respiratory tract. Not only will you be protecting yourself and your family from these common ailments but it will also prove beneficial to your plants and pets. It can help preserve the beauty of precious antiques, musical instruments, and wooden floors and furnishings by maintaining a level of humidity between 40-55% in your home or office.

Over half of all Venta-Airwashers are sold on the basis of recommendations by satisfied customers. Our goal is that you are completely satisfied and that you recommend the Venta-Airwasher to your family and friends. If you have any questions or concerns, please contact us at (888) 333 8218 or [www.venta-airwasher.com](http://www.venta-airwasher.com).

---

## **Table of Contents**

Important Safeguards	3
Unpacking your Airwasher	4
Before First Use	5
Daily Use and Operation	6
Main Components of the Airwasher	7
Maintenance & Cleaning	8
Venta Water Treatment Additive	9
Venta Cleaner	10
Venta Fragrances	11
Helpful Hints, Troubleshooting	12

READ ALL INSTRUCTIONS:

## **Important Safeguards**

---

### **WARNING!**

It is important that you read, fully understand, and observe the following safety precautions and warnings. Read these instructions periodically. Careless or improper use of your Venta-Airwasher may cause serious or even fatal injury. Keep this User Manual with your Airwasher. Be sure anyone using your Airwasher understands the information contained in this manual.

---

- Children should not be allowed to operate the Airwasher.
- Always switch the motor off and unplug the power cord from the AC outlet before refilling it with water, adding Venta Water Treatment additive, Venta Cleaner or Venta Fragrances, or before moving, or handling the unit.
- Plug into 110-120V AC outlet only. Do not use your Airwasher if the power cord or plug is damaged. Do not replace a damaged power cord or plug. Only Venta may replace the power cord or plug.
- Your Venta-Airwasher is double-insulated and not grounded. Do not attempt any repair work. Maintenance or servicing the Venta-Airwasher, other than described in this user manual, should only be done by Venta. Any modification to your Venta-Airwasher is extremely dangerous and voids your warranty.
- Do not insert any objects into the air intake of the unit. It may damage the fan blades or cause injuries. After the motor is switched off, the fan continues to rotate for a short period of time.
- Do not use or store this product where it can fall or be pulled into a bath tub, sink, water, or other liquid. Do not reach for a unit that has fallen into water or other liquid. Do not immerse in water or other liquid, even when the unit is unplugged at that time. Moisture can cause an electric shock hazard when the unit is again plugged into the AC outlet. Wipe moisture off the unit with a dry cloth. Do not handle the plug or the unit with wet hands.
- Use only genuine Venta fragrances.

*Read and follow separate instructions and Warnings for Venta Water Treatment Additive, Venta Cleaner, and Venta Fragrances.*

**Please contact Venta-Airwasher LLC at (888) 333 8218 or [www.venta-airwasher.com](http://www.venta-airwasher.com) for additional information.**

## Unpacking your Airwasher

- 1 Please remove the Venta-Airwasher from its shipping carton.
- 2 Lift the upper housing and remove the protective shipping cardboard from the gear.
- 3 Note the serial # here:   and on the Warranty card included with this User Manual. The serial # is located at the inside of the upper housing under the bar code.



LW 14



LW 24



LW 44

- 4 Lift the disk stack(s) from the lower housing and remove the protective shipping cardboard.
- 5 Remove the package containing two (2) bottles of Venta Water Treatment Additive (WTA). (On the LW 44, these are packed in the upper housing.)

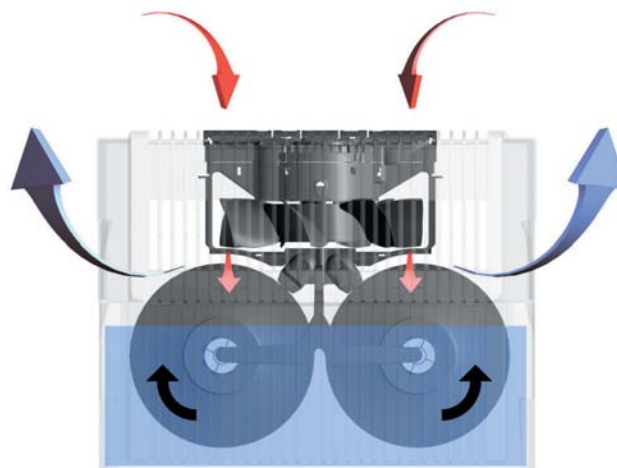


VENTA WATER TREATMENT ADDITIVE (WTA) STARTER BOTTLES

*Keep the packaging if you plan to safely store your Venta-Airwasher during the summer months, or in case of warranty repair.*

### How does the Venta-Airwasher improve your dry indoor air?

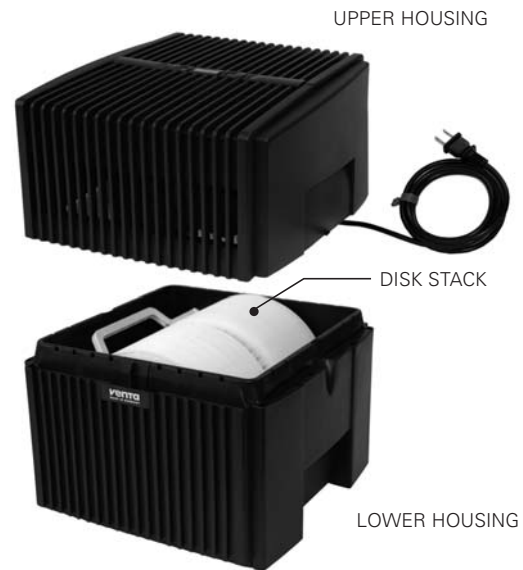
Dry air is drawn in through the top of the Venta-Airwasher and passes over a rotating disk stack(s). Dirt and dust particles become heavy and sink to the bottom of the lower housing. Only humidified purified air will evaporate through the two (2) vented sides of the Venta-Airwasher.



PATENT NO. 5,894,001

## Before First Use

- 1 Place the unit upright on a firm, flat surface. For proper air circulation make sure the vented sides are at least 18-20" clear of any wall. Do not block airflow inlets and outlets. Unrestricted airflow will result in the best efficiency and performance of your Venta-Airwasher.
- 2 Inspect the power cord to insure it is free of damages.
- 3 Make sure the upper housing is removed from the lower housing.
- 4 Place disk stack(s) into lower housing.
- 5 Add fresh tap water. Fill water to the fill line located approximately one (1) inch below the top on the inside of the lower housing. You can transport the lower housing to your sink or tub – or you may fill the lower housing by carrying the water in a pitcher or watering can to the lower housing. Be careful when filling, cleaning, or moving the Venta-Airwasher to avoid water spills. **Do not fill your Venta through the air intake holes on top of the upper housing.**
- 6 Add 3.5 fl.oz. of Venta WTA, the contents of one sample bottle. For your convenience two (2) starter bottles of Venta WTA are enclosed.



- 7 Place upper housing properly on top of lower housing.
- 8 Plug power cord into standard 110-120 V AC outlet.
- 9 See "Daily Use and Operation" on page 6.

## Daily Use and Operation

- The unit is off when the white marker on the fan speed control is above the ZERO (0). Press the PLUS (+) button to switch unit on. The white marker is now above the ONE (1), the fan rotates on its lowest setting.



LW 14, OFF (HAS 2 SPEED SETTINGS)



LW 24/ LW 44 ON, AT SPEED SETTING 1



LW 24/ LW 44 ON, AT SPEED SETTING 2



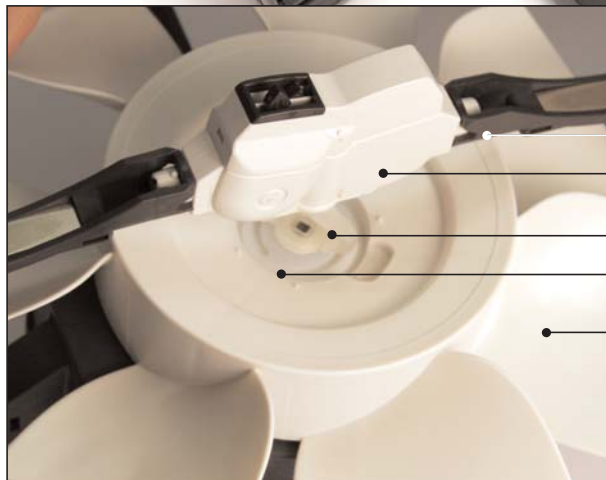
LW 24/ LW 44 ON, AT SPEED SETTING 3

- Press the PLUS (+) button each time you wish to increase the fan speed. (LW 14 = 2 speed settings; LW 24 and LW 44 = 3 speed settings).
- Press the MINUS (-) button each time to reduce the fan speed setting one step. Press MINUS (-) button until the white marker is above ZERO (0); the unit shuts off. Although the motor is shut off, the fan blades may continue to rotate for a short period of time.
- The Venta-Airwasher has a built in, automatic safety shut off switch. As soon as the upper housing is lifted off the lower housing the motor shuts off even though the fan blades may continue to rotate for a short period of time.

## Main Components of the Venta-Airwasher— Easy Access for Cleaning



- 1 Switch the motor off and unplug the power cord.
- 2 To open upper housing unit for easy access to components, press simultaneously both tabs next to the speed controls; "One-Click Technology" unlocks the upper housing.
- 3 Lower the 2 long (vented) sides.
- 4 Lower the 2 short (solid) sides.
- 5 Push up trap door and remove cord from its track.
- 6 Easily lift out the motor housing.



- MOTOR HOUSING ARMS
- GEAR (SLIGHTLY DIFFERENT FOR LW 44)
- COUPLING
- LOCKING RING
- FAN BLADE

## Maintenance and Cleaning

### Daily

FILL with fresh tap water.

### Every 10-14 days

RINSE lower housing and disk stack(s) with warm water. Wipe lower housing and fan blade with soft cloth. RECHARGE with the recommended dose of Venta Water Treatment Additive and fresh tap water.



### Twice a year

CLEAN with ease. Use the Venta Cleaner periodically and the “one-click” technology to thoroughly clean the Venta-Airwasher. See page 10 for instructions.

Or if you prefer, Venta-Airwasher offers a professional factory cleaning service. Call us toll-free (888) 333 8218 for details.

### Anytime

Add a capful of one of our pure essential fragrance oils to provide aromatherapy.

### Transportation

WARNING! Always switch off the motor and unplug the power cord from the A/C outlet before moving the Venta-Airwasher.

### Storage

We recommend a thorough cleaning of your Venta-Airwasher before storing the unit. Please make sure that all components are clean and dry prior to storing. Do not leave water in the lower housing when storing. Water left in the Venta-Airwasher may leave mineral deposits and allow microorganisms to grow. Repack your Venta-Airwasher in its original packaging and store in a cool dry place.

Technical data	LW14	LW24	LW 44
For rooms up to	180 sq. ft. (12' x 15')	360 sq. ft. (18' x 20')	720 sq. ft.
Disk surface	15.3 sq. ft.	22.5 sq. ft.	45 sq. ft.
Air throughput	54 cu.ft/min.	73 cu.ft/min.	150 cu.ft/min.
Speeds	2	3	3
Sound level	30/34 dBA	32/37/42 dBA	32/37/42 dBA
Dimensions	9.5 x 10.5 x 11.8 in.	11.5 x 11.8 x 13 in.	16.5 x 11.8 x 13 in.
Weight (empty)	approx. 7 lb.	approx. 9 lb.	approx. 13 lb.
Energy consumption	approx. 32 watts	approx. 42 watts	approx. 42 watts
Water reservoir	1.2 gallons	2 gallons	3 gallons
Warranty	10 years	10 years	10 years

Extremely low power consumption. Above square feet is based off eight foot ceilings.



## Venta Water Treatment Additive (WTA)

### Applications

Venta Water Treatment Additive is designed to maintain hygienic conditions in the lower housing and to improve the evaporation process. The use of WTA is recommended for the best performance and efficiency of your Venta-Airwasher. Proper usage will help prevent the formation of hard calcium deposits. Simply rinse and wipe out any sediment when changing the water. WTA serves three (3) purposes:

- It improves Airwasher performance by creating a sheeting action on the disks with the effect of increasing the amount of surface area.
- It helps prevent calcium and lime build-up.
- It helps to keep the water more anti-bacterial.



### Directions

Fill lower housing with water daily. Approximately every 10-14 days (depending on individual air and water quality) add a dose of WTA. The lower housing should be periodically rinsed and cleaned approximately every 10-14 days. One dose of WTA is 3.5 fl.oz. equal to one black marking on the left hand side of the WTA bottle's back label. Shake well before use.



### CAUTION! KEEP OUT OF REACH OF CHILDREN.

*EMERGENCY FIRST AID TREATMENT:* Eye and skin irritant. In the event of contact with eyes flush thoroughly with water. In the event of skin contact, rinse with water. Harmful if swallowed. Do not induce vomiting. Seek medical attention.

Venta Water Treatment Additive is recommended for use with Venta-Airwasher humidifiers only. Shelf life when stored cool and away from sunlight: see expiration date (EXP MONTH/YEAR) on bottle front label.



WTA is not suitable for ultrasonic, heat vaporizing or atomizing type vaporizer humidifiers.

*CONTAINS:* Water, quaternary ammonium chlorides and water softening agent.

*WARNING!* Venta Water Treatment Additive is not intended to be used with detergents, cleaning agents and other chemicals. This will deactivate the additive.

In the case where all water has evaporated, Venta Water Treatment Additive remains in the lower housing – it does not evaporate (like salt in sea water). Simply add more tap water and the WTA will activate.

To purchase WTA directly from Venta please shop online at [www.venta-airwasher.com](http://www.venta-airwasher.com) or call toll-free 1 (888) 333 8218. You may also contact us by email: [sales@venta-airwasher.com](mailto:sales@venta-airwasher.com).

## Venta-Cleaner

*Use every six (6) months or more frequently as needed.*

- 1 For thorough cleaning, fill lower housing with water, add the entire contents of the bottle and run the appliance on the lowest setting for approximately two (2) hours.
- 2 Empty lower housing and rinse disk stack(s) and lower housing with warm water.
- 3 Fill lower housing with water and add one dose of WTA.



### **CAUTION! KEEP OUT OF REACH OF CHILDREN.**

*EMERGENCY FIRST AID TREATMENT:* In the event of contact with eyes flush thoroughly with water. In the event of skin contact, rinse with water.

*CONTAINS:* Water and citric acid.

*WARNING:* Venta-Cleaner is recommended for use with the Venta-Airwasher only. Shelf life when stored cool and away from sunlight: see expiration date (EXP MONTH/YEAR) on bottle front label. Venta Cleaner is not suitable for ultrasonic, heat vaporizing or atomizing type vaporizer humidifiers.

Venta-Cleaner is not intended to be used with detergents, cleaning agents, and other chemicals.

---

To purchase Venta-Cleaner directly from Venta please shop online at [www.venta-airwasher.com](http://www.venta-airwasher.com) or call toll-free 1 (888) 333 8218. You may also contact us by email: [sales@venta-airwasher.com](mailto:sales@venta-airwasher.com).

## Venta-Fragrances

Distinctive fragrance blends made from 100% natural essential oils specially developed for Venta-Airwasher.

### Directions:

Add  $\frac{1}{2}$  - 1 capful of fragrance directly to the water in the lower housing.

Effectiveness: Depending on room size, about 2-5 hours.



### **CAUTION! KEEP OUT OF REACH OF CHILDREN.**

### **CAUTION!**

*COMBUSTIBLE.* Keep away from flame or heat.

*EYE AND SKIN IRRITANT:* Avoid contact with eyes, skin, and clothing. Prolonged contact with skin may cause allergic reaction.

*DO NOT* ingest.

*FIRST AID TREATMENT:* If in eyes, immediately flush eyes with water; seek medical attention. If on skin, wash with soap and water. If swallowed, *DO NOT* induce vomiting. Rinse mouth with water and call physician or poison control center immediately.

*CONTAINS:* fragrance oils. Wash hands after handling.

---

To learn more about the fragrances or to purchase Venta-Fragrances directly from Venta please shop online at [www.venta-airwasher.com](http://www.venta-airwasher.com) or call toll-free 1 (888) 333 8218. You may also contact us by email: [sales@venta-airwasher.com](mailto:sales@venta-airwasher.com).

## Helpful Hints

- Serial #: You will find the serial number on the inside of the upper housing just below the bar code.
- Dishwashers: The Venta-Airwasher lower housing, disk stack(s) and upper housing (first remove motor housing from upper housing) can go into a dishwasher on the cool or rinse cycle. It is recommended that it not be washed with dishes. The motor housing cannot be submerged in water or placed in a dishwasher.  
*DO NOT USE:* Detergent, mild soap, bleach, household cleaners.
- Cleaning of disk stacks – Soaking the disk stacks in hot water with Venta Cleaner or white vinegar for approx. 30 minutes will help loosen any buildup of calcium or lime. Always rinse with warm tap water after cleaning.
- Vinegar and Water Solution – either a 50:50 or a 3:1 ratio of white vinegar and water can be used instead of the Venta Cleaning Solution.
- The electric motors of these appliances are designed with an overheating safety device, which will not allow the appliance to operate in an environment with temperatures consistently over 95 degrees Fahrenheit.

## Troubleshooting

### **Problem: Motor not working**

- Is the upper housing sitting properly on the lower housing? The automatic safety switch won't allow the motor to run unless the upper housing is sitting properly on the lower housing.
- Is there electrical power in the outlet? Try to plug the power cord into a different 110-120V A/C outlet.
- Turn the motor to the ZERO (0) off position; unplug the power cord from the electrical outlet. Remove the gear from the upper housing (see section "Removal, page 14), return the upper housing on to the lower housing; plug the power cord into the 110-120V A/C outlet and switch appliance on. If the motor starts, then the gear is defective. Call our customer service department toll-free at (888) 333 8218 for a replacement.

### **Problem: Clicking Noise**

- Make sure the rubber coupling is inserted all the way into the gear.
- If a mineral deposit has formed inside the gear, this could cause a clicking sound during operation. Call our customer service department toll-free at (888) 333 8218 for a replacement.

### **Problem: Wetness around the appliance**

- Turn the empty lower housing upside down to dry. This will allow any excess water that collected between the double walls to empty out the weep holes. Allow at least 24 hours to dry.

### **Problem: Disk stack not turning**

- Check that the rubber coupling is properly inserted into the bottom of the gear.

## Ten (10) Year Limited Warranty

### **Do not return this product to the place of purchase.**

If you have any questions regarding this warranty please call 1-888-333-8218 or write to: Venta-Airwasher LLC, Customer Service, 1360 Hamilton Parkway, Itasca, Illinois 60143. For product registration please return the enclosed Warranty Card or register online at: [www.venta-airwasher.com](http://www.venta-airwasher.com).

Venta-Airwasher LLC (Venta) warrants that for a period of ten (10) years from the date of purchase, this product will be free from defects in material and workmanship. Venta, at its option will repair or replace this product or any component of the product found to be defective during the warranty period. Replacement will be made with a new or remanufactured product or component. If the product is no longer available, replacement may be made with a similar product of equal or greater value. This is your exclusive warranty. This warranty is valid for the original retail purchaser from the date of initial retail purchase and is not transferable. Keep the original sales receipt. Proof of purchase is required to obtain warranty performance.

This warranty does not cover normal wear of parts or damage resulting from any of the following: Negligent use or misuse of the product, use on improper voltage or current, use contrary to the operating instructions, disassembly, repair, or alteration by anyone other than Venta. Further, the warranty does not cover Acts of God, such as fire, flood, hurricanes, and tornadoes.

Venta shall not be liable for any incidental or consequential damages caused by the breach of any express or implied warranty. Except to the extent prohibited by applicable law, any implied warranty of merchantability or fitness for a particular purpose is limited in duration to the duration of the above warranty. Some states, provinces, or jurisdictions do not allow the exclusion or limitation of incidental or consequential damages or limitations on how long an implied warranty lasts, so the above limitations or exclusions may not apply to you. This warranty gives you specific legal rights, and you may also have other rights that vary from state to state.

Venta-Airwasher LLC, 1360 Hamilton Parkway, Itasca, Illinois 60143 U.S.A.

Product made in Germany. User Manual printed in Germany or United States of America.

©2006 Venta-Airwasher LLC. All rights reserved.

Venta-Airwasher is a registered trademark of Venta-Airwasher LLC.

## Servicing your Venta-Airwasher

### Cleaning the gear

Do not submerge the gear in water. To clean any buildup of calcium or lime from the gear "teeth", brush with a soft bristled brush. The gear teeth should be pointed toward the floor while brushing, otherwise deposits will fall into the gear and cause it to malfunction.

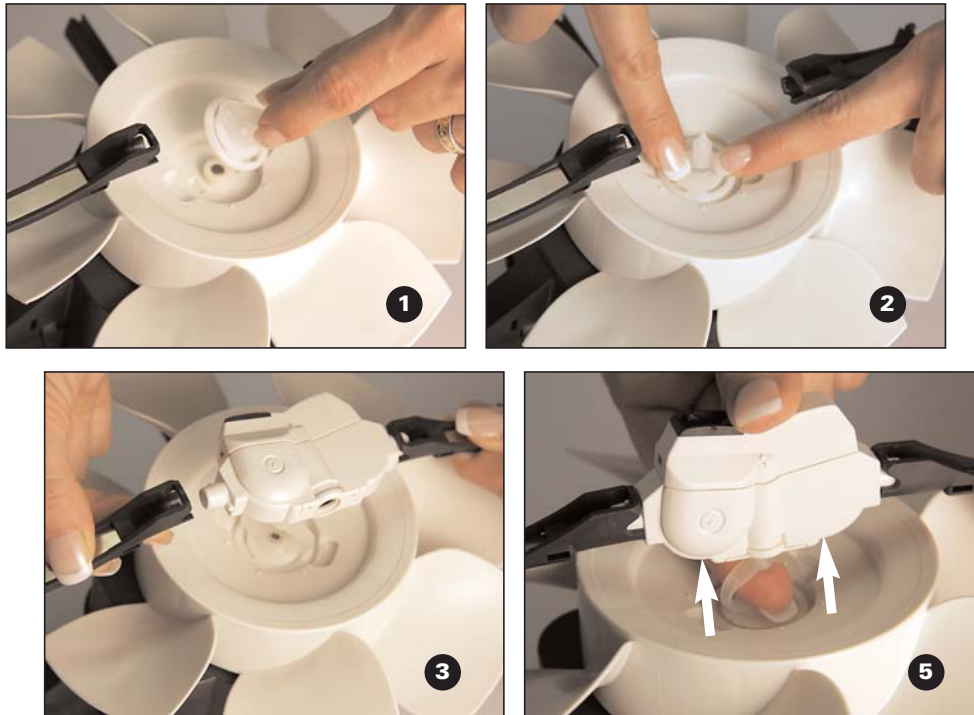
### Removal of gear and coupling

- 1 Switch the unit off (to ZERO position).
- 2 Unplug the power cord from the A/C outlet.
- 3 Remove the motor housing from the upper housing.
- 4 Remove the coupling from the gear by pushing the coupling down toward the fan and away from the gear.
- 5 Pivot (turn) the gear 90 degrees so it is laying on its side.
- 6 Gently pull one of the two motor housing arms approximately 1/8 of an inch away from the gear and remove the gear from the motor housing.
- 7 Remove the locking ring from the center shaft of the fan by prying it up using a small screwdriver.



### Replacement of gear and coupling

- 1 Place the rubber coupling into the locking ring so the rubber feet from the coupling hang below the ring. When placing the coupling and ring on the center shaft of the fan the rubber feet should line up with the notch marks on the fan.
- 2 Snap the ring and coupling into place.
- 3 With the gear laying on its side place it between the motor housing arms that suspend it above the fan.
- 4 While placing the palms of your hands against the motor housing arms, apply slight pressure, and pivot the gear to the operating (upright) position. **Check that the locking knob (flange) is properly seated.** The locking knob, on either side of the gear, should fit tightly behind the ridge of the motor housing suspension arm.
- 5 Insert the rubber coupling into the bottom of the gear and push it up into the gear until it fits tight. On models with a small white pin, first insert the pin through the rubber coupling and then push both up into the gear until it fits tight. Check that this is properly seated by spinning the fan with your hand. The teeth in the gear should slowly move in and out.



### Service Option: Venta-Airwasher

In case you prefer the factory to handle your concern, for warranty repair, or if you wish to utilize the factory cleaning service for your Venta-Airwasher, please call our customer service department toll free at 1 (888) 333 8218 to obtain a Return Merchandise Authorization (RMA) number. Attach a tag to the product that includes your name, address, daytime phone number, and description of the problem. Include a copy of the original sales receipt. For products purchased in the United States, carefully package the product in its original packaging and send it either by UPS or Parcel Post with shipping and insurance prepaid to:

Venta-Airwasher LLC • 1360 Hamilton Parkway • Itasca, Illinois 60143



Venta-Airwasher LLC • 1360 Hamilton Parkway • Itasca, Illinois 60143  
Phone 630 285 1188 • Fax 630 285 1187 • [www.venta-airwasher.com](http://www.venta-airwasher.com)



## Free Manuals Download Website

<http://myh66.com>

<http://usermanuals.us>

<http://www.somanuals.com>

<http://www.4manuals.cc>

<http://www.manual-lib.com>

<http://www.404manual.com>

<http://www.luxmanual.com>

<http://aubethermostatmanual.com>

Golf course search by state

<http://golfingnear.com>

Email search by domain

<http://emailbydomain.com>

Auto manuals search

<http://auto.somanuals.com>

TV manuals search

<http://tv.somanuals.com>