

# MediaStation

## Network Multimedia Hard Drive

User Guide  
English



 Verbatim®

# Contents

---

<b>Introduction</b>	<b>3</b>
<b>Specifications</b>	<b>3</b>
<b>Precautions</b>	<b>3</b>
<b>System Requirements</b>	<b>4</b>
<b>Package Content</b>	<b>4</b>
<b>Product Overview</b>	<b>4</b>
<b>1. Use as External USB HDD</b>	<b>4</b>
1.1 Copy Data via USB	4
1.1.1 Windows 2000, XP, Vista	5
1.1.2 Linux	5
1.1.3 Mac	6
<b>2. Access PC via Network</b>	<b>6</b>
2.1 Connect LAN Cable	6
2.2 Set Network Configurations	6
2.2.1 Windows 2000	6
2.2.2 Windows XP	9
2.2.3 Windows Vista	11
<b>3. Use as Multimedia Player</b>	<b>13</b>
3.1 Connect to External AV Device	13
3.1.1 Connect Video Cable	13
3.1.2 Connect Audio Cable	14
3.2 Basic Setup	14
3.2.1 Video Setup	14
3.2.2 Audio Setup	15
3.2.3 Network Setup	15
3.2.4 Screen Setup	17
3.2.5 Preview Setup	17
3.2.6 LED Setup	17
3.3 Basic Screen Menu	18
3.3.1 Mode Selection, Media Type Selection	18
3.3.2 File Selection	19
3.4 Play Video Files	20
3.5 Play DVD Files	21
3.6 Play Music Files	22
3.7 Play Photo Files	23
3.8 Make a Play-List	24
3.9 Remote Controls	25
3.10 Others	25
3.10.1 Music Slide Show	25
3.10.2 MP3 Quick Play	25
3.10.3 Change Background Image	25
3.10.4 Firmware Upgrade	26
<b>Technical Support</b>	<b>26</b>
<b>Limited Warranty Terms</b>	<b>26</b>
<b>WEEE Notice</b>	<b>26</b>
<b>FCC Compliance</b>	<b>26</b>
<b>CE Declaration - EC Declaration of Conformity</b>	<b>27</b>
<b>RoHS Compliance</b>	<b>27</b>

## Introduction

---

Verbatim MediaStation is brand-new digital multimedia player supporting dual data access mode via 3.5" HDD inside and 10/100Mbps Network. Easily enjoy Digital Movie, Digital Music, Digital Photo data of 3.5" HDD inside and Networking PC's hard disk drive on your TV.

- Dual Data Access Mode via 10/100Mbps LAN and 3.5" HDD inside
- Digital Multimedia Player via Home TV or Car TV
- USB 2.0 External Storage via PC (NTFS, FAT32)
- Audio - Stereo, Digital Coaxial & Optical 5.1ch. Sound
- Video - Composite, S-Video, HD Component 480p, 720p, 1080i
- DVD Manager - Playback of DVD File same as Original DVD Title
- Easy Firmware Upgrade.

## Specifications

---

Product Name	Verbatim MediaStation	
Power	12V 3A	
Weight	1200g (including HDD) approx.	
Dimension	47 x 150 x 210 mm	
Available OS	Windows 2000/XP/Vista, Mac OS 9.0 Higher, Linux 2.4 Higher	
USB Interface	480Mbps USB 2.0 (USB 1.1 Compatible) / Slave	
Network Interface	10/100 Mbps LAN (RJ-45)	
HDD Type	3.5" SATA HDD	
HDD File System	NTFS / FAT32 (Pre-formatted FAT 32)	
TV Type	NTSC / PAL	
Supported Format	Movie	MPEG 1, 2, 4 (MPG, MPEG, AVI, M2V, DAT, VOB, IFO) DivX, XviD (except GMC, Qpel option applied)
	Music	MP3, OGG Vorbis, WAV, WMA (except WMA9 pro.lossless)
	Photo	JPG(JPEG)
Video Output	COMPOSITE / S-VIDEO / COMPONENT Y, Pb, Pr (480p, 720p, 1080i Progressive Scan)	
Audio Output	STEREO L-R / DIGITAL COAXIAL, OPTICAL (DTS Pass-Through Only)	
Working Temperature	0°C ~ 60°C	
Working Humidity	10% ~ 50%	

## Precautions

---

- It is important to regularly backup the content of any hard disk drive to an alternative medium. Verbatim is not responsible for any loss of data.
- It's better to unplug the power adaptor when you do not use for a long time.
- MediaStation does not support the DivX, XviD codec of video files that has GMC, Qpel option.
- MediaStation supports only "Pass-Through" for DTS Audio codec.
- Do not power off while a file is playing.
- Do not use USB cables longer than 3m.
- If you have USB 1.1 Host Adapter, MediaStation is working at USB1.1 speed.
- Handle MediaStation with care. Do not drop or subject to impact or shock.
- We recommend you to use the all supplied cables or accessories that are customized for the best performance of MediaStation.
- Do not expose to liquids, this may cause an electrical shock hazard.
- Keep away from external heat sources.
- Keep away from devices that transmit strong magnetic signal. It may cause data damage or loss on the HDD.
- Do not disassemble MediaStation as you may cause damage and you will invalidate your warranty

# System Requirements

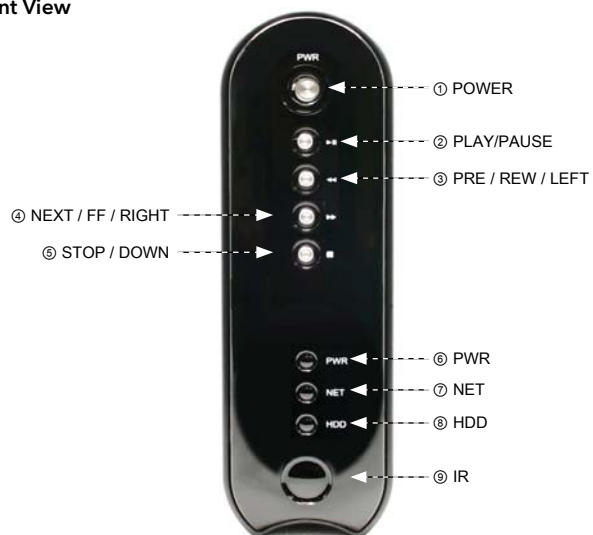
- USB Requirements
  - Windows 2000, XP, Vista / MAC OS 9.0 higher / Linux 2.4.x higher
  - Available USB 2.0, 1.1 Port (Recommend USB 2.0)
- Network Requirements
  - Windows 2000, XP, Vista
  - Available 10/100 Ethernet LAN Port, RJ-45 (Recommend 100Mbps)

# Package Content

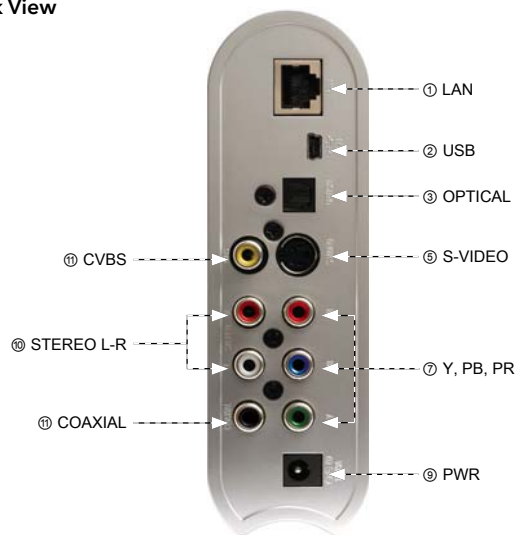
- Mediastation network multimedia drive, Remote Control (+Battery), Stand, Composite video / Stereo audio cable, USB Cable, External AC Power Adapter, User manual CD , Quick start guide

# Product Overview

Front View



Back View



Front View	① POWER	Power On, Off
	② PLAY / PAUSE	Play all files from selected file / Pause
	③ PRE / REW / LEFT	Go to the previous page or Rewind / Left key
	④ NEXT / FF / RIGHT	Go to the next page or Fast Forward / Right key
	⑤ STOP / DOWN	Stop / Scroll down key
	⑥ IPWR	Power LED
	⑦ NET	Network LED
	⑧ HDD	HDD running LED
	⑨ IR	IR Receiver

Back View	① USB	Connect USB cable
	② OPTICAL	Connect Optical cable for 5.1 ch. digital audio output
	③ S-VIDEO	Connect s-video for video output
	④ COAXIAL	Connect coaxial cable for 5.1 ch. digital audio output
	⑤ Y, PB, PR	Connect component Y, Pb, Pr cable for video output
	⑥ LAN	Connect Lan cable for networking
	⑦ PWR	Connect power cable
	⑧ CVBS	Connect composite cable for video output
	⑨ STEREO L-R	Connect stereo cable for audio output

## 1. Use as External USB HDD

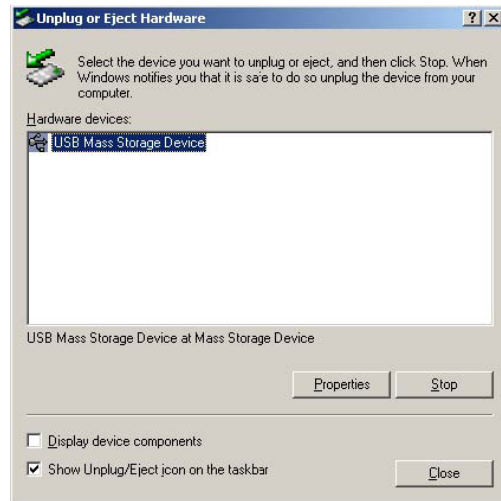
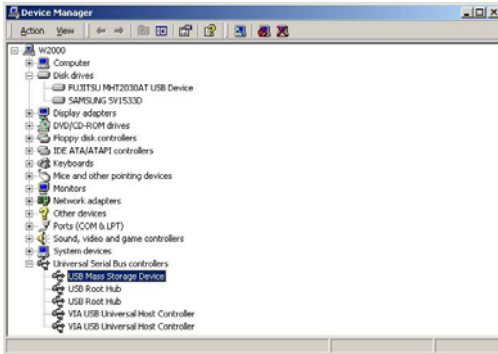
### 1.1 Copy Data via USB

Your MediaStation may be used an external hard drive for your PC once connected via USB port. Once connection via USB port is made video outputs will be disabled.

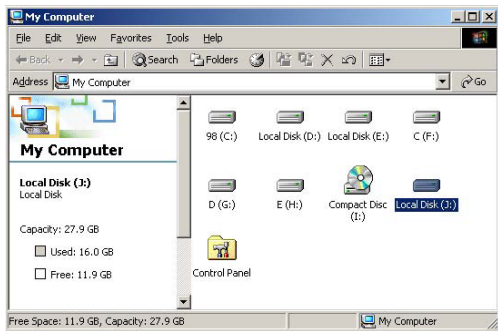
\* When connecting PC, you have to connect power cable of MediaStation.

### 1.1.1 Windows 2000, XP, Vista

1. After connecting MEDIASTATION and plug power cable, Windows itself will install driver automatically. And then, check the driver installation at Windows [Start > Settings > Control panel > (switch to classic View on Windows XP) > system > Hardware > Device manager > Universal Serial Bus controllers > USB Mass Storage Device ].
3. After copying data, remove MEDIASTATION with using remove icon at Windows right-down corner. If you don't follow this procedure, data and MEDIASTATION may have damage.



2. Check 'My Computer' or 'Explorer', there should be a new volume. You can copy any data to this volume.



✓ When you see 'Non High-Speed USB Hub Message' The message will be displayed On windows XP when you plug MEDIASTATION into USB 1.1 spec. Host adapter.

### 1.1.2 Linux

✓ Compatible with Linux 2.4 or higher.

#### [Automatic Mount]

After booting, do log-in.

Connect MEDIASTATION -> Power On MEDIASTATION -> Check the detection with [fdisk] -> make Mount Pointer (ex. mediatest) at Folder Mount(/mnt) -> Edit [/etc/fstab] -> add the following;

/dev/sda /mnt/mediatest vfat noauto, user 0 0 (in case of FAT32 HDD)

/dev/sda /mnt/mediatest ntfs noauto, user 0 0 (in case of NTFS HDD)

Do Log-in again.

✓ Above example "sda" is assumed that the MEDIASTATION will be detected as "sda" on your system. If not, you have to write the drive name which is detected as "USB Mass Storage", not "sda"

#### [Manual Mount]

Connect MEDIASTATION -> Power On MEDIASTATION -> Check the detection -> with [fdisk] -> make Mount Pointer (ex. mediatest) at Folder Mount(/mnt) -> Edit [/etc/fstab] -> add the following;

mount -t vfat /dev/sda /mnt/mediatest (in case of FAT32 HDD)

mount -t ntfs /dev/sda /mnt/mediatest (in case of FAT32 HDD)

✓ Above example "sda" is assumed that the MEDIASTATION will be detected as "sda" on your system. If not, you have to write the drive name which is detected as "USB Mass Storage", not "sda"

**[How to stop using]**

Do [unmount] at Device Control.

**1.1.3 Mac**

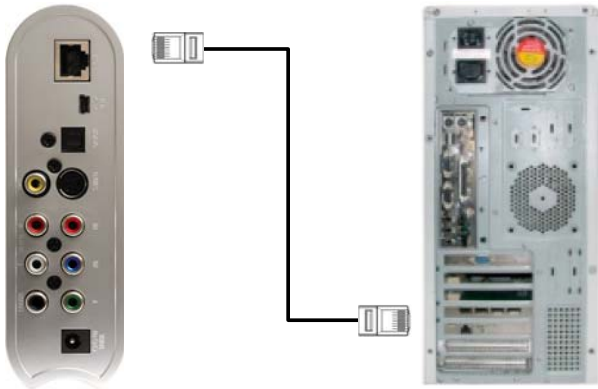
No need to install the installation driver at Mac OS 9.x version and the MEDIASTATION will be detected automatically. If the MEDIASTATION is detected correctly, an icon is appeared at a monitor.

When removing MEDIASTATION safely, drag the icon to a trash and unplug MEDIASTATION.

**2. Access PC via Network**

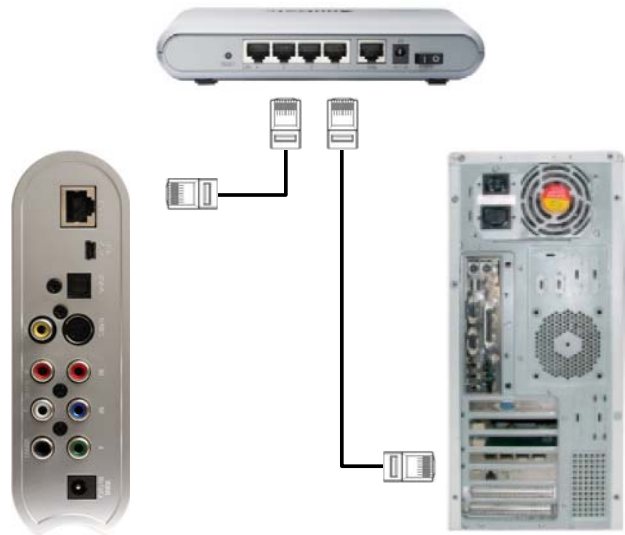
**2.1 Connect LAN Cable**

When connecting Computer to MEDIASTATION directly



Connect LAN cable to LAN port between MEDIASTATION and PC. In this case, you have to use Cross LAN cable type generally.

When connecting with IP Router or Hub



Connect LAN cable to LAN port between IP Router or Hub. In this case, you have to use Direct LAN Cable type generally.

[TIP] If the computer's LAN card was connected to Internet line, you can mount additional LAN card to your PC and connect that additional LAN card to MEDIASTATION.

**2.2 Set Network Configurations**

After connecting LAN cable, you have to set network configurations of Computer and MEDIASTATION.

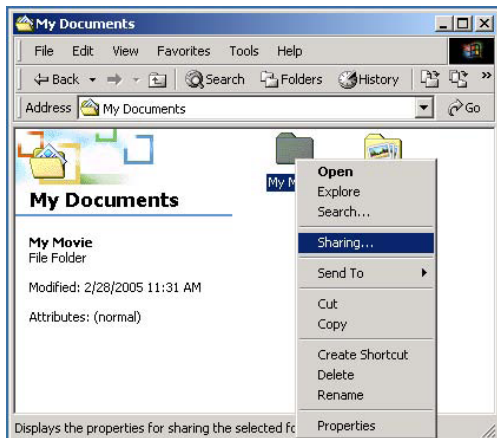
You need to share a folder on Windows computer and use same 'IP Address range' and same 'Subnet Mask' between Windows computer and MEDIASTATION. For example,

	Computer	MEDIASTATION
IP Address	192.168.1.2	192.168.1.3
Subnet Mask	255.255.255.0	255.255.255.0

\*It is possible to assign IP address and Subnet Mask of MEDIASTATION as dynamic or static.

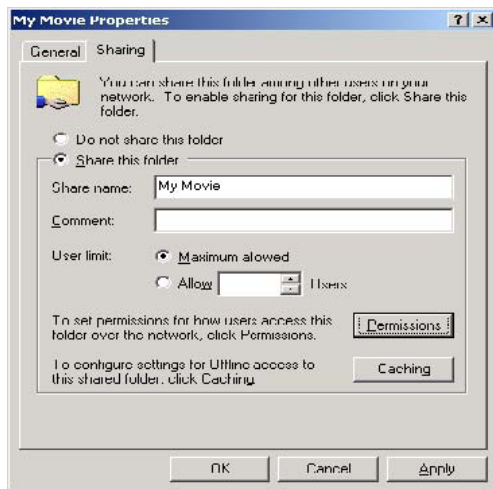
## 2.2.1 Windows 2000

1. Select a folder which you want to share. Right-click the folder and click 'Sharing' in pop menu.



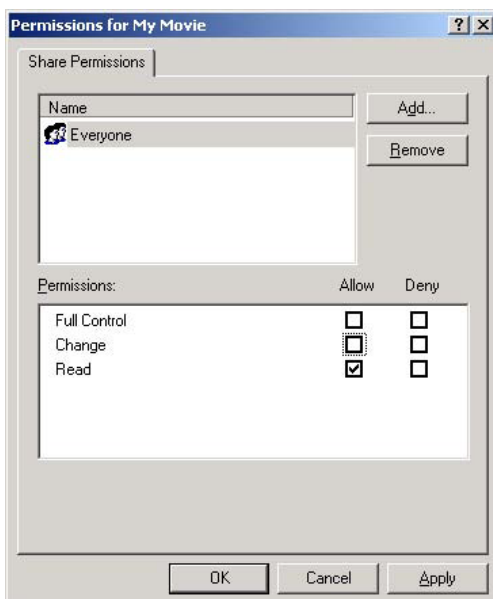
2. Check 'Share this folder' and write 'share name'.  
For example, "My Movie"

✓ Make sure to write 'share name' within 12 characters in English.



3. Click 'Permissions' and check whether "Everyone" account is or not. If not, add "Everyone" account.

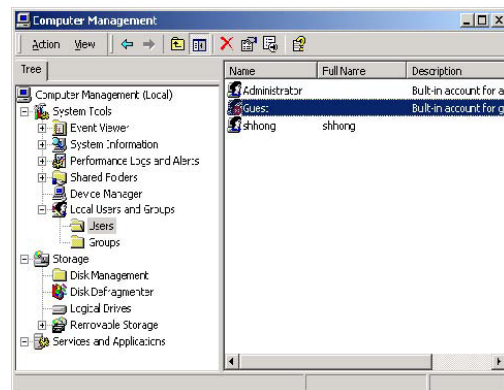
✓ Recommend only to use 'Read>Allow' at Permissions.



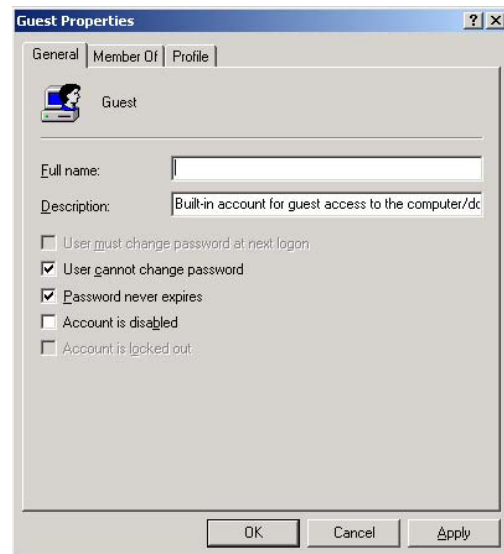
4. After that, the shared folder will be displayed as following picture.



5. Move to [Settings>Control Panel>Administrative Tools>Computer management>Local Users and Groups>Users], and double click 'Guest'.

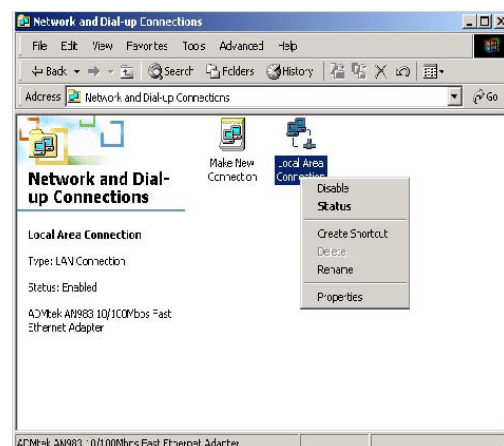


6. Check 'User cannot change password' and 'Password never expires'.



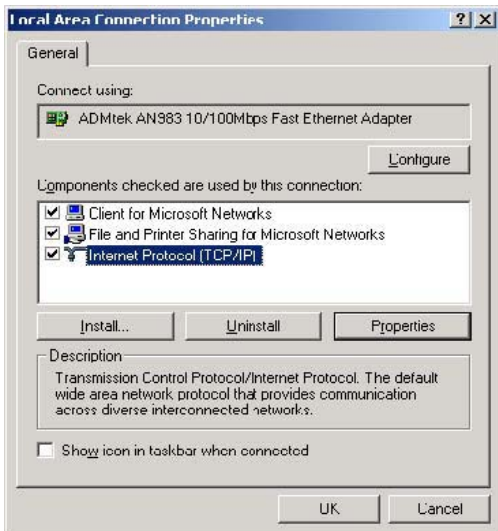
7. Move to [Control Panel>Network and Dial-up Connections], and select Properties of 'Local Area Connections' by right click of mouse.

✓ If you see two or more 'Local area connections', select one that you will use for connecting to MEDIASTATION.





8. Double click 'Internet Protocol (TCP/IP)' that you want to use on your computer.

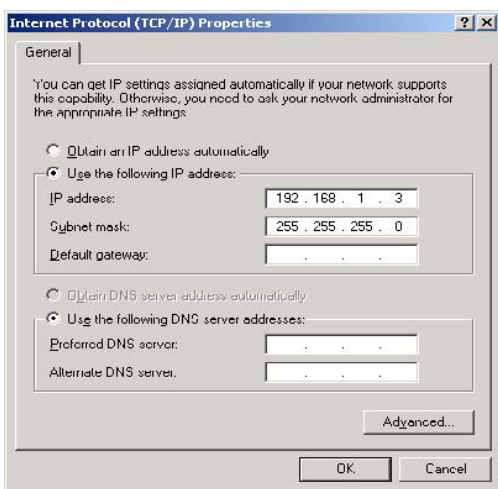


9. Check 'Use the following IP address', and write 'IP address' & 'Subnet mask' that you want to use.

For example,

IP address: 192.168.1.3

Subnet mask: 255.255.255.0



✓ If you have already been provided dynamic IP address from DHCP Server or IP Router on your local area network, you don't need to input IP address.. Use 'Obtain an IP address automatically'.

10. Set the network configurations of Mediastation.

✓ You have to connect MEDIASTATION to TV set for this setup. See "3.1.1 Connect Video Cable".

Press [SETUP] of remote control for moving to setup screen. On that screen, select 'DHCP off' and write IP address & Subnet mask.

For example,

IP Address: 192.168.1.2

Subnet mask: 255.255.255.0

After writing, press [SETUP] again for saving configurations.



✓ If you have already been provided dynamic IP address from DHCP Server or IP Router on your local area network, you don't need to write static IP address absolutely. Use 'DHCP on' or write IP address & Subnet mask that DHCP Server or IP Router provide.  
 ✓ Check 'IP address obtained automatically' When you use 'DHCP On', you can see the IP address in MENU screen after selecting 'PC-Network' icon in Mode Selection screen.

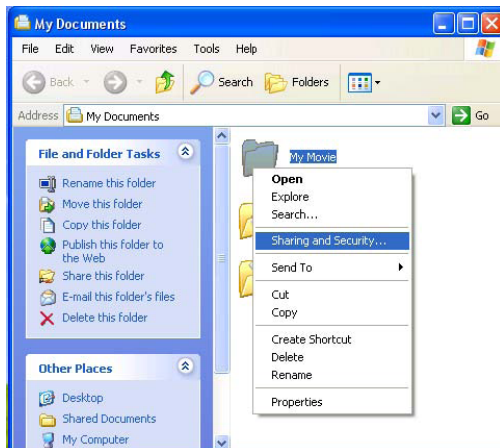


<Mediastation IP Address>



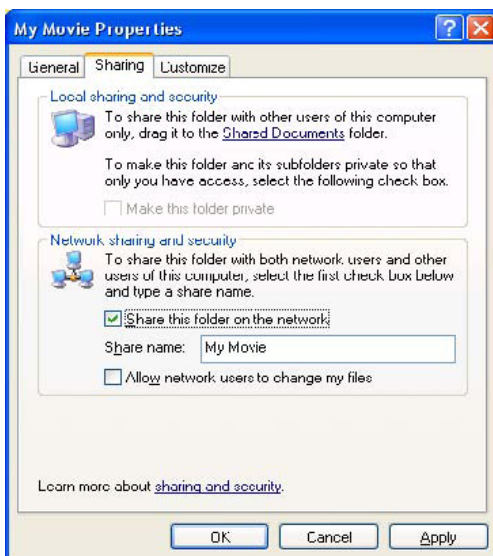
## 2.2.2 Windows XP

1. Select a folder which you want to share. Right-click the folder and click 'Sharing and Security' in pop menu.



2. Check 'Share this folder on the network' and write 'Share name'. For example, "My Movie"

✓ Make sure to write 'Share name' within 12 characters in English.



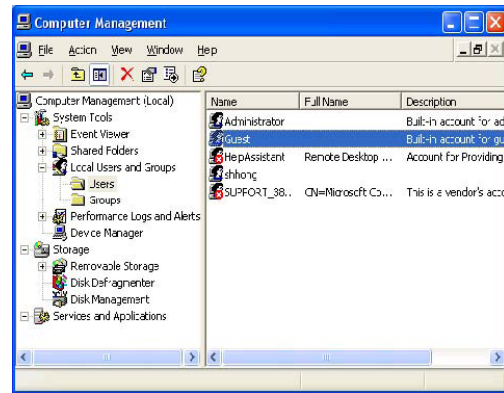
3. After that, the shared folder will be displayed as following picture.



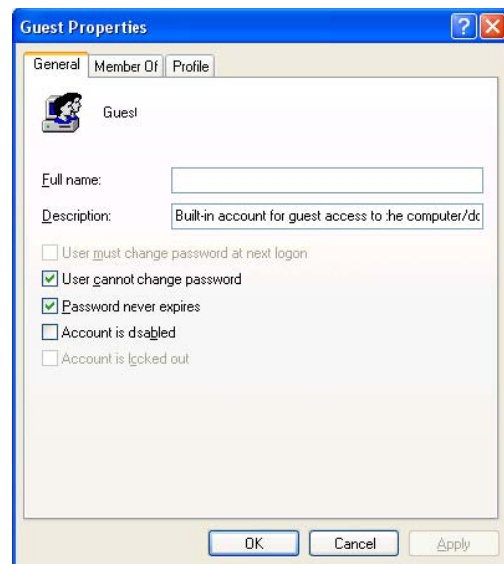
4. Move to [Settings>Control Panel>Administrative Tools>Computer management>Local Users and Groups>Users], and double click 'Guest'.

✓ This is for Windows XP Professional. Windows XP Home users can't see this figure. Go to next number 6).

✓ If you can't find 'Administrative Tools' at Control Panel, click "Switch to classic view" in left-up corner on screen.



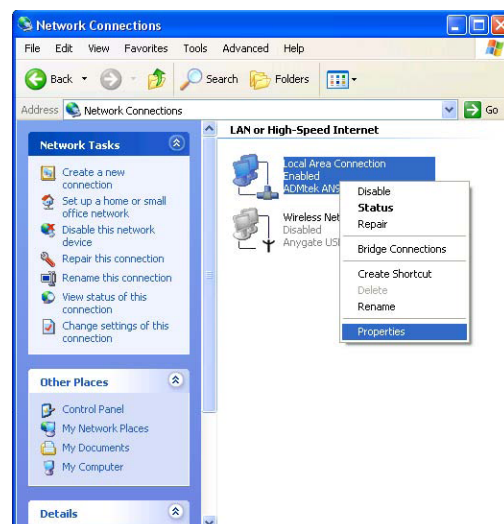
5. Check 'User cannot change password' and 'Password never expires'.



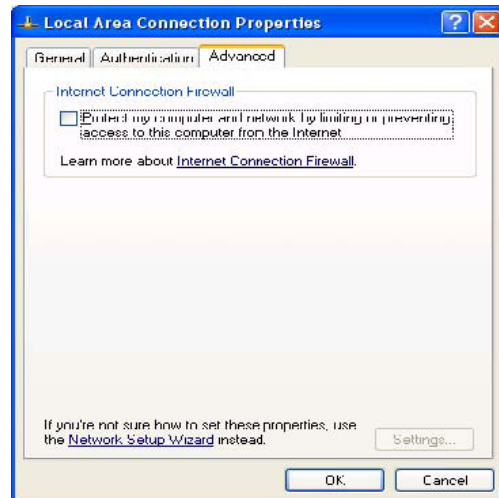
6. Move to [Control Panel>Network connections], and select 'Local area connections' properties by right click of mouse.

✓ If you can't find 'Administrative Tools' at Control Panel, click "Switch to classic view" in left-up corner on screen.

✓ If you see two or more 'Local area connections', select one that you will use for connecting to MEDIASTATION.



- Double click 'Internet Protocol(TCP/IP)' that you want to use on your computer.
- At above number 7) figure, click 'Advanced' Tab. Disable 'Internet Connection Firewall'.



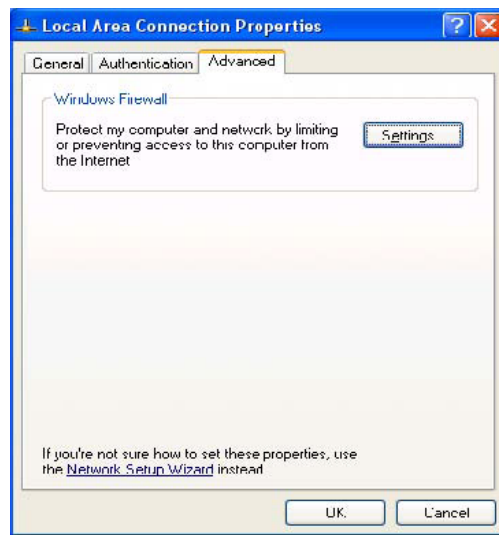
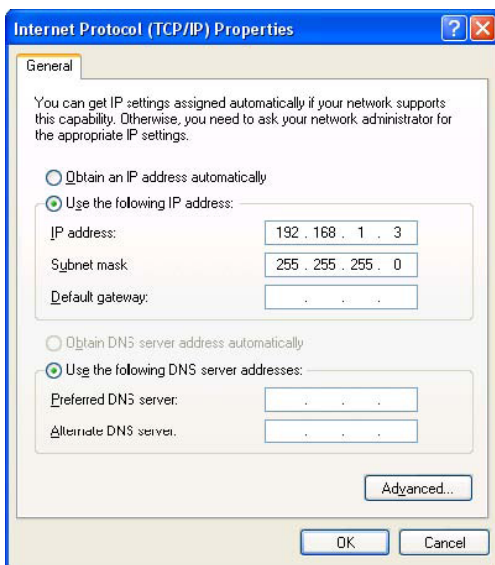
✓ If you use service pack 2, refer to the following figures. Click 'Settings' at 'Windows Firewall'

- Check 'Use the following IP address', and write 'IP address' & 'Subnet mask' that you want to use.

For example,

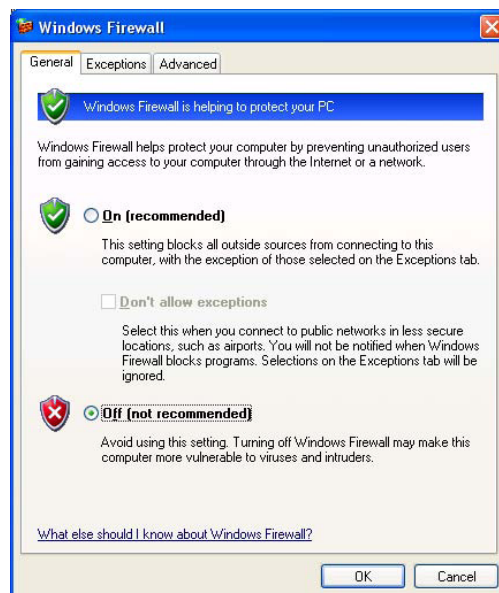
IP address: 192.168.1.3

Subnet mask: 255.255.255.0



Check 'Off' and click 'OK'

✓ If you have already been provided dynamic IP address from DHCP Server or IP Router on your local area network, you don't need to write static IP address absolutely. Use 'Obtain an IP address automatically on' or write IP address & Subnet mask that DHCP Server or IP Router provide.



10. Set the network configurations of MEDIASTATION.

✓ You have to connect MEDIASTATION to TV set for this setup. See "3.1.1 Connect Video Cable".

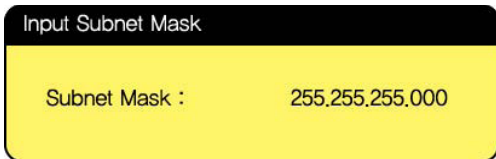
Press [SETUP] of remote control for moving to setup screen. On that screen, select 'DHCP off' and write IP address & Subnet mask.

For example,

IP Address: 192.168.1.2

Subnet mask: 255.255.255.0

After writing, press [SETUP] again for saving configurations.



✓ If you have already been provided dynamic IP address from DHCP Server or IP Router on your local area network, you don't need to write static IP address absolutely. Use 'DHCP on' or write IP address & Subnet mask that DHCP Server or IP Router provide.

✓ Check 'IP address obtained automatically' When you use 'DHCP On', you can see the IP address in MENU screen after selecting 'PC-Network' icon in Mode Selection screen.



<Mediastation IP Address>

2.2.3 Windows Vista

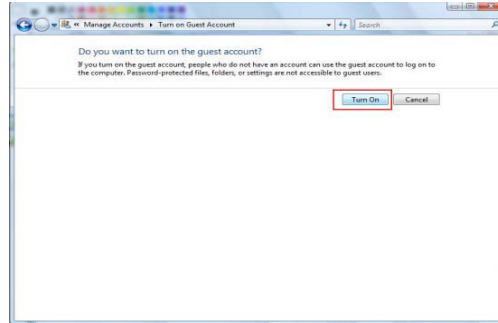
Before you do "folder sharing", you need to set up 3 things for Network sharing.

1. Setup of User Accounts and Family safety

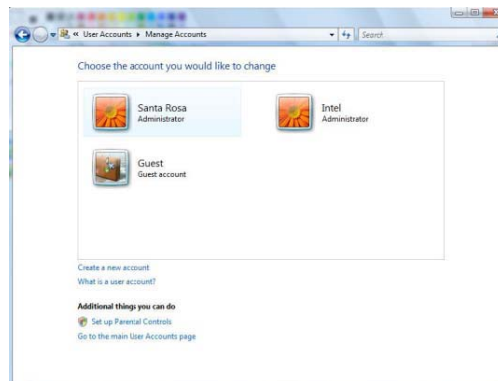
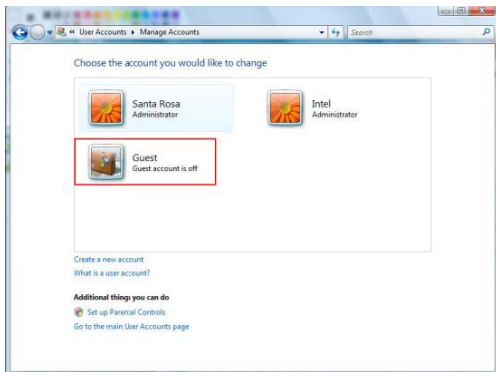
a. Click Start > Settings > Control Panel > Users Accounts and Family safety



c. If the "Guest" account is off, then switch it to "On".



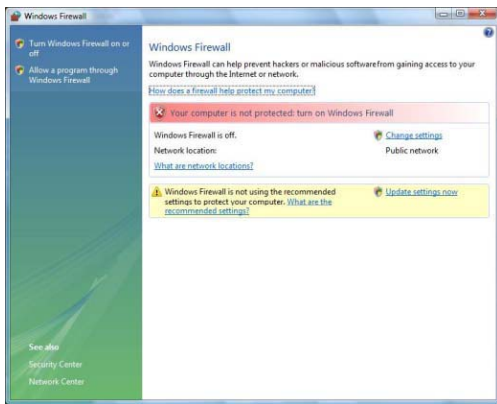
b. Make sure the account is "Guest".



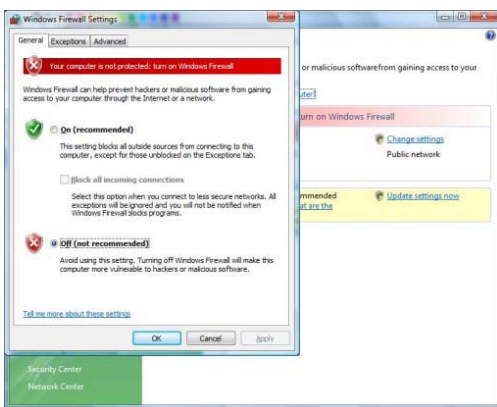


2. Disable "Firewall"

a. Click Start > Setting > Control Panel > Security > Windows Firewall on / off

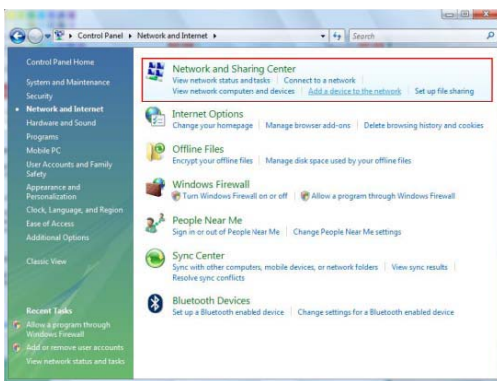


b. Click at 'Off (not recommended)

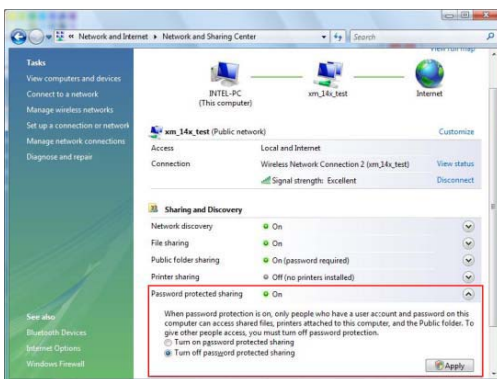


3. Setup of Network and Sharing Center

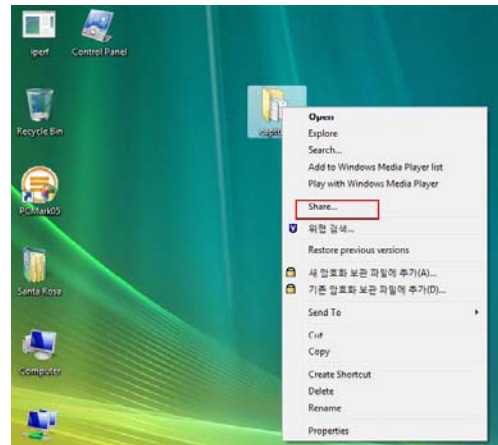
a. Click Start > Setting > Control Panel > Network and Internet > Network and Sharing Center



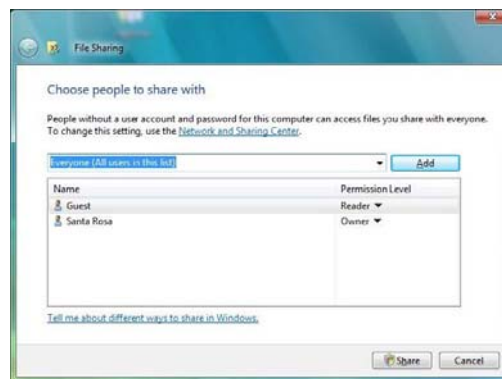
b. Select "Password Protected sharing" and select "Turn off password protected sharing"



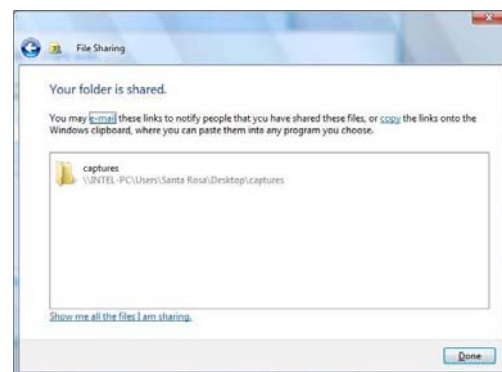
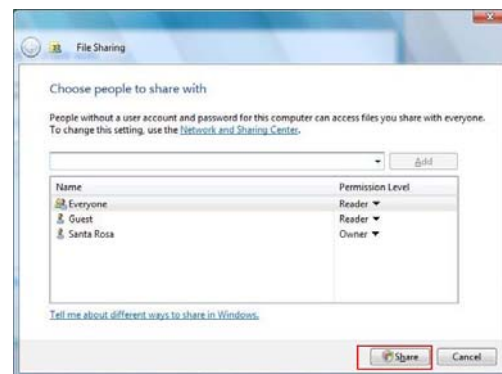
c. make a folder you want to share.



d. You will get a popup "Choose people to share with" then select "Everyone (All users in this list) and press "Add" button.



e. After you register the user account, then click "Share" button.

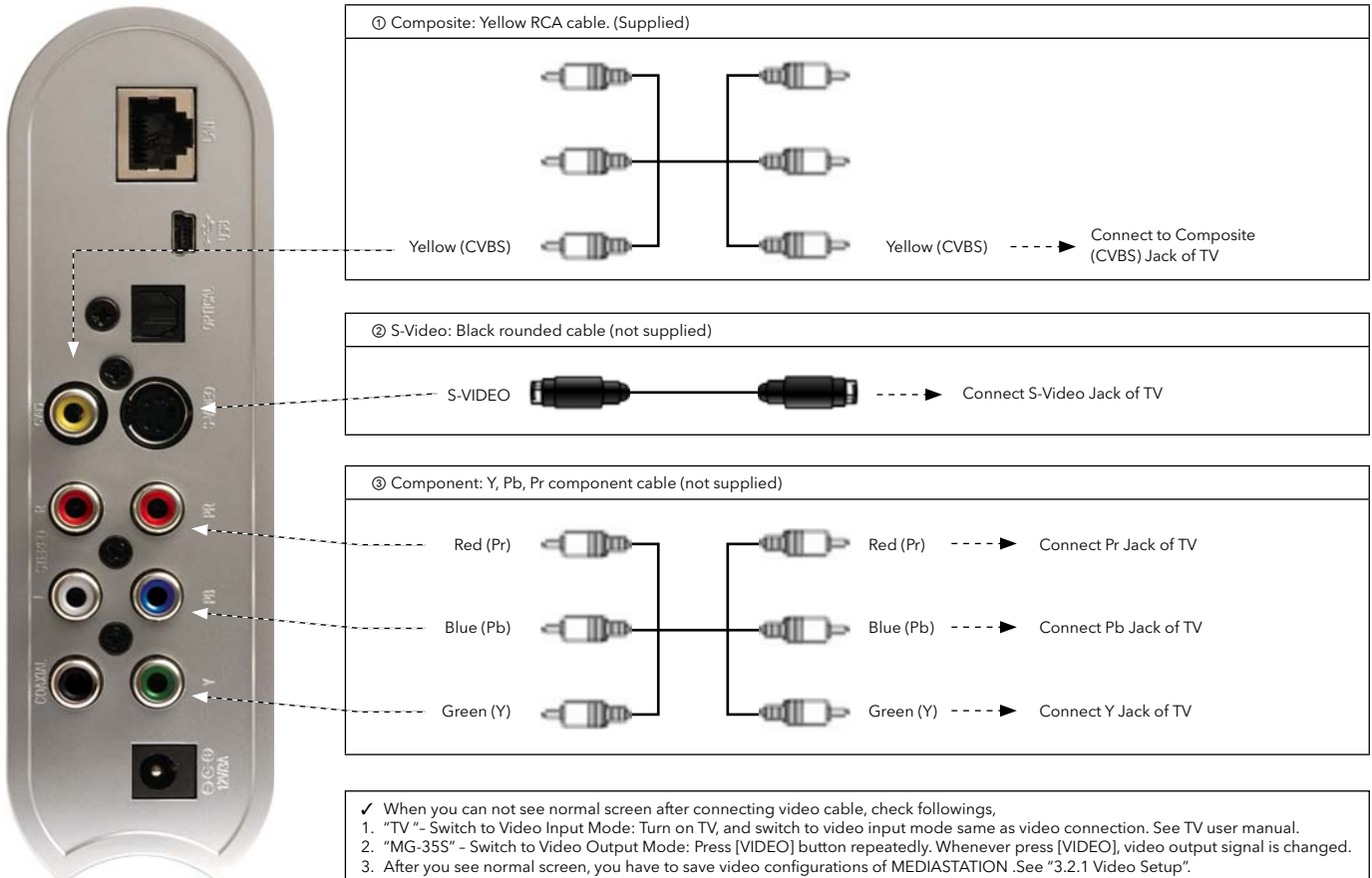


## 3. Use as Multimedia Player

### 3.1 Connect to External AV Device

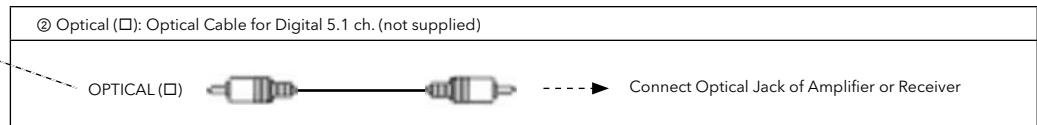
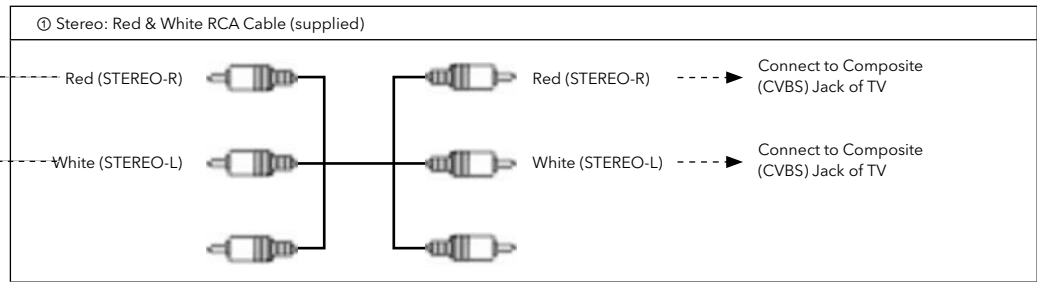
#### 3.1.1 Connect Video Cable

MEDIASTATION supports 3 type of video output; "Composite, S-video, Component". Use video connection that your TV supports. Normally, TV supports composite video connection, and this package is supplied with a composite video cable.

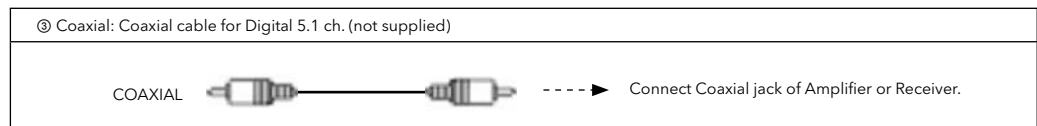


### 3.1.2 Connect Audio Cable

MEDIASTATION supports 3 type of audio output; "Stereo, Coaxial, Optical". Use audio connection that your TV or Audio set supports. Normally, TV supports stereo audio connection, and this package supplies stereo audio cable



✓ Don't connect optical and coaxial cable together at the same time.



✓ When you can not hear sound after connecting Optical or Coaxial Cable, you have to change audio setup of MediaStation as Encoded Digital. See "3.2.2 Audio Setup"

## 3.2 Basic Setup

### 3.2.1 Video Setup

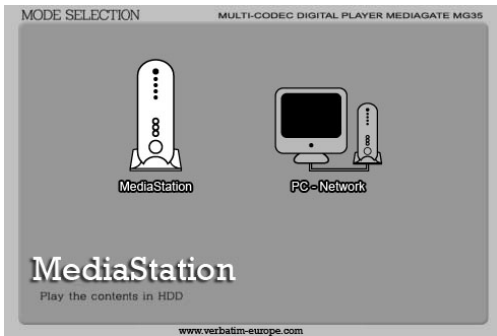
This is guide for setting video output of MEDIASTATION. You have to setup MEDIASTATION video output mode same as TV set's video input mode.

- ✓ When you can not see normal screen after connecting video cable, check followings,
  1. "TV" - Switch to Video Input Mode: Turn on TV, and switch to video input mode same as video connection. See TV user manual.
  2. "MEDIASTATION" - Switch to Video Output Mode: Press [VIDEO] button repeatedly. Whenever press [VIDEO], video output signal is changed.
  3. After you see normal screen, you have to save video configurations of MEDIASTATION.

TV Video Input Mode	MEDIASTATION Video Output Mode	Connection Jack of TV, MEDIASTATION	Video Cable Type
Normal Video	TV Out: NTSC C/S-Video (HD Component OFF)	CVBS or Composite Jack (Generally Yellow Jack)	Yellow RCA Cable (Supplied)
	TV Out: PAL C/S-Video (HD Component OFF)		
S-Video	TV Out: NTSC C/S-Video (HD Component OFF)	S-Video Jack	S-Video Cable * Black rounded
	TV Out: PAL C/S-Video (HD Component OFF)		
Component 480i	TV Out: NTSC C/YPbPr (HD Component OFF)	Component 3 Jack * Y(Green), Pb(Blue), Pr(Red)	Component Cable * Y(Green), Pb(Blue), Pr(Red)
	TV Out: PAL C/YPbPr (HD Component OFF)		
Component 480p	HD Component Out On 480p		
Component 720p	HD Component Out On 720p		
Component 1080i	HD Component Out On 1080i		

✓ NTSC, PAL : Standard of TV Output. Select a proper one for using in your country.

## Setup Procedure



① Turn on MediaStation and press [SETUP] on Mode Selection screen.



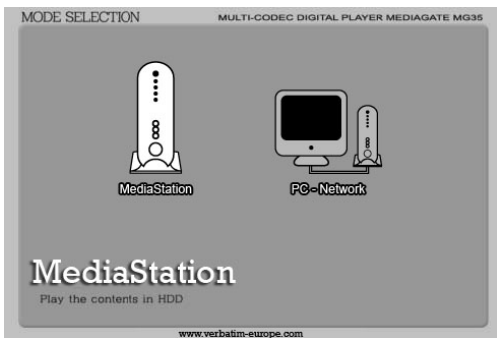
② Move to 'TV Out' icon and press [ENTER]. Setup box will be displayed under icon menu.  
 ③ Move to Video Output Mode that you want and press [ENTER].  
 ④ Finally, press [SETUP] again for saving configurations.

### 3.2.2 Audio Setup

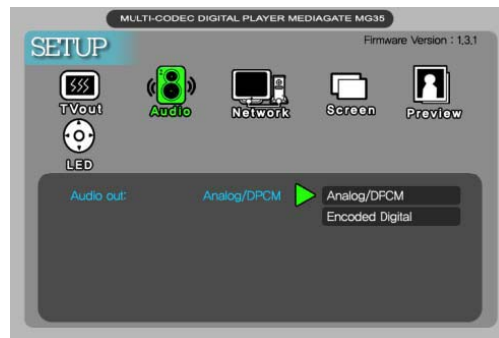
This is guide for setting audio output of MEDIASTATION. You can use Stereo or Digital 5.1 ch..

- ✓ Analogue/DCPM: Select when you connect the supplied audio cables (Red / White) to TV or Audio set directly.
- ✓ Encoded Digital: Select when you want to listen through 5.1Ch / DTS Dolby by connecting receiver (or amplifier) with Optical or Coaxial cable.

## Setup Procedure



① Turn on MediaStation and press [SETUP] in Mode Selection screen.



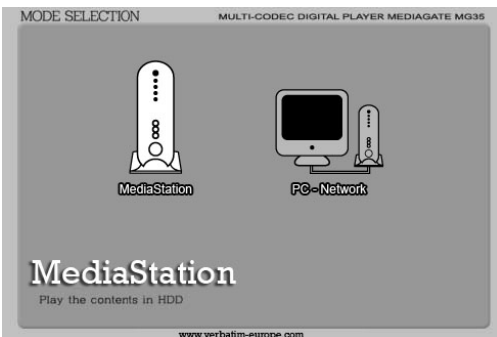
② Move to 'Audio' icon and press [ENTER]. Setup box will be displayed under icon menu.  
 ③ Move to Audio Output Mode that you want and press [ENTER].  
 ④ Finally, press [SETUP] again for saving configurations.

### 3.2.3 Network Setup

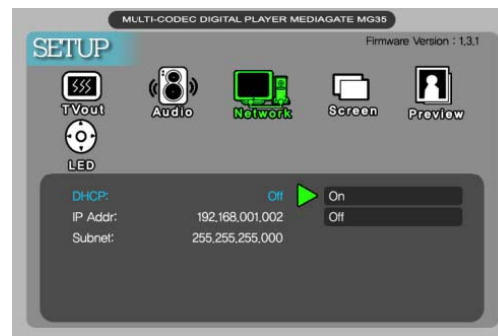
It is possible to obtain IP address automatically from DHCP Server or IP Router, or set the specific IP address. Check your network environments.

- ✓ DHCP On: You can use this option when it is possible to obtain IP address automatically from DHCP Server or IP Router.
- ✓ DHCP Off: When it is not possible to obtain IP address automatically or you connect to your PC directly without DHCP Server or IP Router, you have to use this option. Just enter the IP address and Subnet mask.

## 'DHCP On' Setup Procedure

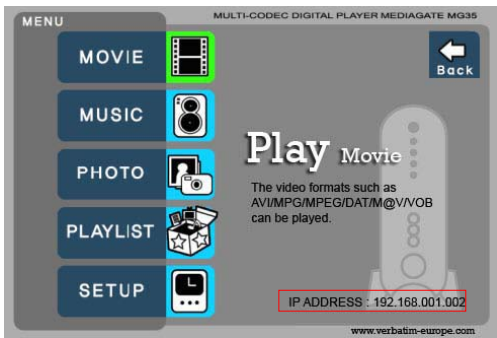


① Turn on MediaStation and press [SETUP] in Mode Selection screen.



② Move to 'Network' icon and press [ENTER]. Setup box will be displayed under icon menu.  
 ③ Move to DHCP On and press [ENTER].  
 ④ Finally, press [SETUP] again for saving configurations.

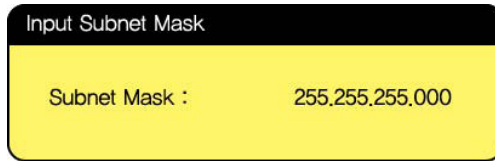




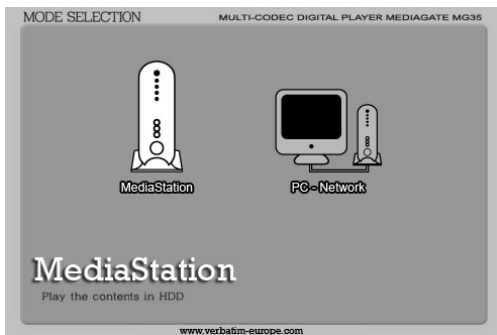
✓ Check 'IP address obtained automatically'  
When you use 'DHCP On', you can see the IP address in MENU screen after selecting 'PC-Network' icon in Mode Selection screen.



④ Move to 'IP Addr' and press [ENTER]  
IP address Input box will be displayed. Enter IP address with arrow and number button of remote control. And then, press [ENTER] again.



⑤ Move to 'Subnet' and press [ENTER].  
Subnet mask Input box will be displayed. Enter Subnet mask with arrow and number button of remote control. And then, press [ENTER] again.  
⑥ Finally, press [SETUP] again for saving configurations.



① Turn on MediaStation and press [SETUP] in Mode Selection screen.



✓ Check 'The specific IP address you wrote'  
When you use 'DHCP off', you can see the IP address in MENU screen after selecting 'PC-Network' icon in Mode Selection screen.

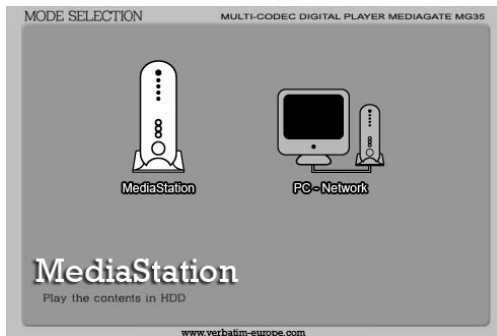


② Move to 'Network' icon and press [ENTER]. Setup box will be displayed under icon menu.  
③ Move to DHCP Off and press [ENTER].

### 3.2.4 Screen Setup

This is guide for setting TV Type. You can use 4:3 Letter Box, 4:3 Pan Scan, and 16:9.

#### Setup Procedure



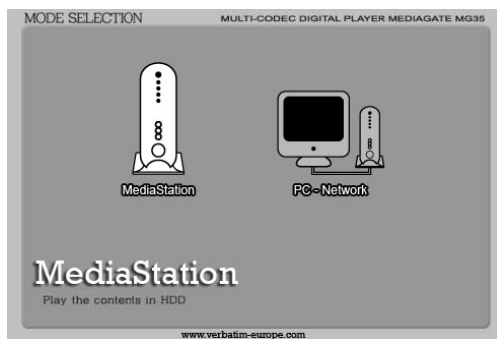
① Turn on MediaStation and press [SETUP] in Mode Selection Screen.

② Move to 'Screen' icon and press [ENTER]. Setup box will be displayed under icon menu.  
③ Move to 4:3 Letter box, 4:3 Pan scan or 16:9 that you want and press [ENTER].  
④ Finally, press [SETUP] again for saving configurations.

### 3.2.5 Preview Setup

It is possible to enable or disable preview the photo file as a thumbnail image before playing.

#### Setup Procedure



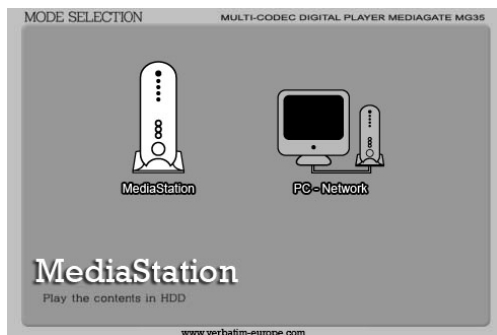
① Turn on MediaStation and press [SETUP] in Mode Selection screen.

② Move to 'Preview' icon and press [ENTER]. Setup box will be displayed under icon menu.  
③ Move to Photo preview on or off that you want and press [ENTER].  
④ Finally, press [SETUP] again for saving configurations.

### 3.2.6 LED Setup

It is possible to turn on or off a backlight LED of arrow button on the front side. When the LED disturbs you in night, turn off the LED.

#### Setup Procedure



① Turn on MediaStation and press [SETUP] in Mode Selection screen.

② Move to 'LED' icon and press [ENTER]. Setup box will be displayed under icon menu.  
③ Move to LED on or off that you want and press [ENTER].  
④ finally, press [SETUP] again for saving configurations.

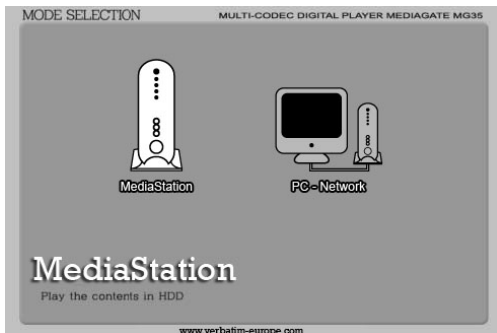
### 3.3 Basic Screen Menu

#### 3.3.1 Mode Selection, Media Type Selection

After turning on MEDIASTATION, you can see Mode Selection screen. In this screen, you can select Built-in HDD or Networking Computers. Just press [ENTER] after moving to the icon with ◀▶ arrow button.

✓ If there is no HDD or networking PC, the icons are not activated.

##### 1. Use Built-in HDD



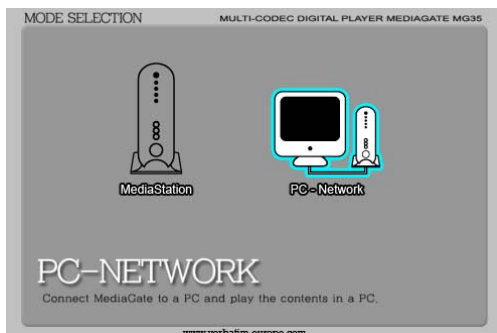
① [Mode Selection] Move to 'MediaStation' icon and press [ENTER] for playing built-in HDD's files.



② [Media Type Selection] Select a media type which you want to play and press [ENTER].

- Movie: Select when playing Video files
- Music: Select when playing Music files
- Photo: Select when playing Photo files
- List: Select when making a play list including video, music, photo files
- Setup: Select when moving to setup screen.

##### 2. Use Networking Computer



① Turn on MediaStation and press [SETUP] in Mode Selection screen.



② [Media Type Selection] Select a media type which you want to play and press [ENTER].

- Movie: Select when playing Video files
- Music: Select when playing Music files
- Photo: Select when playing Photo files
- List: Select when making a play list including video, music, photo files
- Setup: Select when moving to setup screen.



③ [Computer list on network] Computer list on network will be displayed. Move to a computer and press [ENTER].

### 3.3.2 File Selection

After selecting a Media type, 'File Selection' screen will be displayed. Move to a file that you want to play and press [ENTER] or [PLAY/PAUSE].



- ☞ [ENTER] button Play one file that you select. After finishing playback, return to 'file selection screen'.
- ☞ [PLAY/PAUSE] button After playing the file that you select, play next all files continuously.
- ☞ ◀▶ button Move to files with pressing ▼▲ arrow buttons.
- ☞ ◀ button Return to up directory with pressing ◀ arrow button.
- ☞ ▶ button Go to 'Icon Menu Tray' placed at the top of screen with pressing ▶ button. In order to return to file selection screen, press ▼ arrow button or select Exit icon.
- ☞ NEXT ▶▶I, PREV I◀◀ button Move to Next or Previous page when there are too many files to list on one screen.

#### ☞ Icon Menu Tray Descriptions

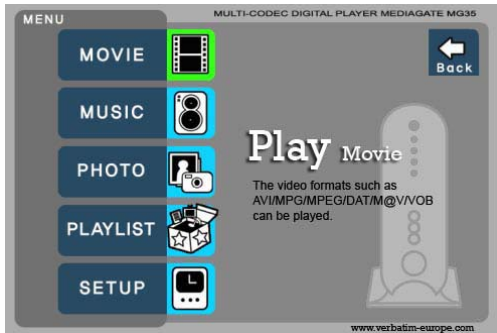
Go to 'Icon Menu Tray' placed at the top of screen with pressing ▶ button. In order to return to file selection, press ▼ arrow button or select 'Exit' icon.

	<b>Back:</b>	Return to directory
	<b>Allplay:</b>	After the file that you select has finished all files will be played continuously. It has the same action as pressing the [PLAY/PAUSE] button.
	<b>Menu:</b>	Return to Media Type screen
	<b>Exit:</b>	Exit Icon Menu Tray and return to file selection screen.

### 3.4 Play Video Files

It is possible to play video files like AVI, MPG, MPEG, DAT, M2V, and VOB.

Select 'Movie' icon in Media Type Selection screen. Video file list will be displayed. Just move to a file and press [ENTER] or [PLAY/PAUSE] button.



Select 'Movie' icon in Media Type Selection screen.

Move to a file and press [ENTER] or [PLAY/PAUSE] button. Press [ENTER] for playing just the file or [PLAY/PAUSE] for playing all files from the selected file.



#### Function and Button Descriptions

Remote Control	Function	Descriptions
AUDIO	Dual Audio	It is possible to switch each audio language when the audio format is dual-audio, for example, including a local language and English.
SUBTITLE	Subtitle - Move & Size	It is possible to change subtitle size and location. ◀▶ arrow button changes size and ▼▲ arrow button changes location. To confirm press [ENTER].
	Subtitle - Select or Hide	The subtitle name same as video file is displayed on screen automatically. However, it is possible to open the other preferable subtitle files or hide.
	Subtitle - Language Select	It is possible to switch each subtitle language when the subtitle is dual language format, for example, including a local language and English. * When selecting 'Discriminating subtitle language', first subtitle language will be displayed.
	Subtitle - Sync.	It is possible to set the subtitle sync. with ▶(one second) ▼▲(60 second) when motion and subtitle sync are not matched.
4, 5, 6 Number Button	Subtitle - Colour Change	Subtitle colour is changed by pressing number 4 or 6 button. In order to return default colour (white), press number 5.
Scr. SIZE	Zoom Vertical	Zoom screen vertically.
	Zoom Full	Enlarge the overall screen.
	Custom	Enlarge or reduce the screen by ▲▼▶◀ arrow buttons.
	Default	Return to original screen size and position.
	Screen Position	Move the screen to the direction with ▲▼▶◀ arrow buttons. Press [Brt.Cont] key to return to the original screen position when applying Screen position.
TIME SEARCH	Jump to Preferable Playback Time	Move to a selected time of a file.
CANCEL	Delete Input Numbers	In time search box, this button deletes all numbers in 0.
Brt. CONT	Control luminosity, colour depth, brightness	When pressing this button, 3 modes switch. After selecting a mode change settings with ▼▲ arrow buttons.
FILE INFO	Show File Information	Show the file information which is being played. In order to hide the information, press this button again.
FF ▶▶	Fast Forward	Whenever pressing this button, play speed is changed with 8x, 16x, 32x in forward.
▶ arrow button		
REW ◀◀	Rewind	Whenever pressing this button, play speed is changed with 8x, 16x, 32x in backward.
◀ arrow button		
VOLUME +	Volume Up	Volume up.
▲ arrow button		
VOLUME -	Volume Down	Volume down.
▼ arrow button		
MUTE	Sound Off	Mute the sound. In order to hear sound press this button again.
ENTER	Playback a File	Play a file. After finishing playback return to file selections screen.
PLAY / PAUSE ▶	Playback Next All Files	After the file that you select has finished all files will be played continuously
PLAY / PAUSE ▶	Pause	Pause playback, if pressing this button when a file is being played. In order to play again, press this button again.
PREV I ◀◀	Playback Previous File	Play a previous file before a current playback file. If you used [ENTER] for playback, you can not use this function. This is available in playing all files as using [PLAY/PAUSE] button or 'ALLPLAY' icon.

NEXT ►►I	Playback Next File	Play a next file after a current playback file. If you used [ENTER] for playback, you cannot use this function. This is available in playing all files as using [PLAY/PAUSE] button or 'ALLPLAY' icon.
0 Number button	Screen Reset	If a frame of a video file is broken, green colour runs on a overall screen. Press number [o "Zero"] for screen reset.
MENU	Menu Icon Popup	Popup menu will appear including 'File Info, Time Search, Subtitle, Scr.Size' functions. In order to hide the popup, press this button again.

### 3.5 Play DVD Files

DVD manager function supports the playback of backed up DVD Files in the same way as the original DVD.

Make a folder and then save all the DVD files into the folder. After connecting TV(or Monitor), select VIDEO\_TS.IFO file at the folder. Make sure that all the DVD backup files including VIDEO\_TS.IFO from one DVD title will be located in one folder.

- ✓ If you can not find VIDEO\_TS.IFO file among all the backed up files from an original DVD title, DVD manager function will not work.
- ✓ When you play DVD file in networking computer, playback time might be delayed, so it's not possible to play DVD files on networks. It is recommended to use the built-in HDD.



Select 'Movie' icon in Media Type Selection screen.

Move to the folder including DVD backup files and select 'video\_ts.ifo' file and press [ENTER] button.



#### Function and Button Descriptions

Remote Control	Function	Description
AUDIO	Select Audio Type	Audio type will be changed whenever pressing this button.
SUBTITLE	Select Subtitle Type	Subtitle type will be changed whenever pressing this button.
Scr. SIZE	Screen Size	Screen size will be changed when press the button.
MENU	Go to Menu	Move to main menu while playing DVD.
SLOW	Playback Slow	Play slowly 1/2x, 1/4x, and 1/8x whenever pressing this button.
REPEAT	Chapter, Title Repeat	Set chapter, title repeat.
A-B REPEAT	A-B repeat	Set the A-B repeat.
TITLE	Go to Title Menu	Move to title menu while playing DVD.
ANGLE	Angle	Apply angle function.
FILE INFO	Show File Information	Show the file information which is being played. In order to hide the information, press this button again.
TIME SEARCH	Jump to Preferable Playback Time	Move to a selected time of a file.
CANCEL	Delete Input Numbers	In time search box, this button deletes all numbers in 0.
Brt. CONT	Control luminosity, colour depth, brightness	When pressing this button, 3 modes switch. After selecting a mode, change settings with ▼▲ arrow buttons.
PREV I◀◀	Playback Previous Chapter	Play a previous chapter.
NEXT ►►I	Playback Next Chapter	Play a next chapter.
FF ►►	Fast Forward	Whenever pressing this button, play speed is changed with 8x, 16x, 32x, 48x in forward.
REW ◀◀	Rewind	Whenever pressing this button, play speed is changed with 8x, 16x, 32x, 48x in backward.
ENTER	Playback	Play selected 'Video_ts.ifo' file.
PLAY / PAUSE ►►II	Pause	Pause playback, if pressing this button when a file is being
VOLUME +	Volume Up	Volume up.
VOLUME -	Volume Down	Volume down.

### 3.6 Play Music Files

It is possible to play music files like MP3, OGG, WAV, WMA.

Select Music icon in Media Type Selection screen. Music file list will be displayed. Just move to a file and press [ENTER] or [PLAY/PAUSE] button.



Select 'Movie' icon in Media Type Selection screen.

Move to the folder including DVD backup files and select 'video\_ts.ifo' file and press [ENTER] button.



#### Function and Button Descriptions

Remote Control	Function	Description
FILE INFO	Show File Information	Show the file information which is being played. In order to hide the information, press this button again.
TIME SEARCH	Jump to Preferable Playback Time	Move to a selected time of a file.
CANCEL	Delete Input Numbers	In time search box, this button deletes all numbers in 0.
Brt. CONT	Control luminosity, colour depth, brightness	When pressing this button, 3 modes switch. After selecting a mode, change settings with ▼▲ arrow buttons.
PREV ◀◀	Playback Previous File	Play a previous file before a current playback file. If you used [ENTER] for playback, you can not use this function. This is available in playing all files as using [PLAY/PAUSE] button or 'ALLPLAY' icon.
NEXT ▶▶	Playback	Play a next file after a current playback file. If you used [ENTER] for playback, you can not use this function. This is available in playing all files as using [PLAY/PAUSE] button or 'ALLPLAY' icon.
FF ▶▶	Go to 10 Sec. in Forward	Go to 10 sec. in forward and play when a file is being played.
REW ◀◀	Go to 10 Sec. in Backward	Go to 10 sec. in backward and play when a file is being played.
ENTER	Playback a File	Play a file. After finishing playback, return to file selections screen.
PLAY / PAUSE ▶▶	Playback Next All Files	After the file that you select, play next all files continuously. It is same as [PLAY/PAUSE] button.
PLAY / PAUSE ▶▶	Pause	Pause playback, if pressing this button when a file is being played. In order to play again, press this button again.
VOLUME +	Volume Up	Volume up.
VOLUME -	Volume Down	Volume down.
MUTE	Sound Off	Mute the sound. In order to hear sound, press this button again.
SUBTITLE	Hide Mp3 Subtitle	It is possible to show mp3 subtitle which the mp3 file supports subtitle. In that case, this button will hide the subtitle. * mp3 subtitle supported file must be made by iriver caption editor program, not support LDB program.

✓ How to Play MP3 without using TV display. MP3 Quick Play  
 Make a 'music' folder (in lower case) at root directory of built-in HDD and save MP3 files at the folder.  
 Turn on MEDIASTATION and just press [PLAY/PAUSE] button. MP3 files in the 'music' folder will be played automatically. Additionally, after rebooting MEDIASTATION, playback will recommence with the last file played.



### 3.7 Play Photo Files

It is possible to play photo files like JPG(JPEG).

Select Picture icon in Media Type Selection screen. The Photo file list (or folder list) will be displayed. Just move to a file and press [ENTER] or [PLAY/PAUSE] button.



Select Picture icon in Media Type Selection screen.

Move to a file and press [ENTER] or [PLAY/PAUSE] button. Press [ENTER] for playing just the file or [PLAY/PAUSE] for playing all files from the selected folder.



#### Function and Button Descriptions

Remote Control	Function	Description
FILE INFO	Show File Information	Show the file information for the file which is being played. In order to hide the information, press this button again.
PREV ◀◀	Playback Previous File	Play a previous file before a current playback file. If you used [ENTER] for playback, you can not use this function. This is available in playing all files as using [PLAY/PAUSE] button or 'ALLPLAY' icon.
NEXT ▶▶	Playback Next File	Play a next file after a current playback file. If you used [ENTER] for playback, you can not use this function. This is available in playing all files as using [PLAY/PAUSE] button or 'ALLPLAY' icon.
ENTER	Playback a File	Play a file. After finishing playback, return to file selections screen.
PLAY / PAUSE ▶	Playback Next All Files	After the file that you select, play next all files continuously. It is same as [PLAY/PAUSE] button.
PLAY / PAUSE ▶	Pause	Pause playback, if pressing this button when a file is being played. In order to play again, press this button again.
FF ▶▶	Zoom In	Enlarge a photo.
REW ▶▶	Zoom Out	Reduce a photo.
ANGLE	Rotation	Rotate a photo.
방향키 ▼▲◀▶	Panning	Move the position of photo.
ENTER	Return to Original Photo	Return to original photo.
Brt. CONT	Control luminosity, colour depth, brightness	When pressing this button, 3 modes switch. After selecting a mode, change settings with ▼▲ arrow buttons.

✓ Photo Slide Show  
If you play all files with 'PLAYALL' icon or [PLAY/PAUSE], photo slide shows will be started.

✓ Music Slide Show  
Make a 'music' folder (in lower case at root directory) of built-in HDD and save MP3 files at the folder. When you play one or all photo files, you can listen mp3 and see photo slide show together.

✓ Photo Preview On, Off  
It is possible to enable or disable preview the photo file as a thumbnail image before playing at SETUP screen.

### 3.8 Make a Play-List

User can register all media files such as video, music and photo to a play-list.

✓ It is not possible to play each registered files independently. Use 'Random, PLAY all' icon or [PLAY/PAUSE] button. Additionally, registered play-list will be deleted after rebooting.



① Select Play List icon in Media Type Selection screen.

② Move to a file and press [ENTER] for adding to Play-List. After adding, press [▶] for moving to 'Menu Icon tray'. Move to 'List' icon and press [ENTER].



③ Play-List screen appears showing added files.  
Play as follows  
- Random icon: play in random.  
- Allplay icon: play in order from selected file.  
- Play/Pause button: play in order from selected file.

\* In order to move up to Menu Icon Tray, press [▶] button.

\* Highlighting Delete(X) and pressing Enter deletes all the added files.

\* In order to delete a added file, move to a file on Play-List screen and press [ENTER] twice.

\* In order to change location among added files, move to a file which you want to move and press [ENTER] and then move to the other file where you want to add and press [ENTER].

## 3.9 Remote Controls

This is guide for basic use of remote control. For more details see section '3.3 Basic Screen Menu', '3.4 Play Video Files', '3.5 Play DVD Files', '3.6 Play Music Files', '3.7 Play Photo Files', '3.8 Make a Play-List'.



**POWER** Turn On / Off **SETUP** Go to Setup Screen

**MENU** Go to DVD Main Menu, Display Menu Icon When Playing Video File

**TITLE** Go to DVD Title Menu **ANGLE** DVD Angle, Photo Rotation

**REPEAT** Set DVD Chapter, Title Repeat

**A-B REPEAT** Set DVD A-B Repeat

**SLOW** Play DVD Slowly

**MAIN PAGE** Go to Mode Selection Screen

**PLAY/PAUSE** Play next all files Pause

**STOP** Stop Play

**REW** Rewind (8x 16x 32x 48x)

**FF** Fast Forward (8x 16x 32x 48x)

**PREV** Go to Previous PagePlay Previous File in Play All

**NEXT** Go to Next PagePlay Next File in Play All

**VIDEO** Change Video Output Mode

**AUDIO** Change Audio Type of Video, DVD file

**SUBTITLE** Subtitle Settings

**Scr. SIZE** Screen Size Settings

**ENTER** Play a File

**▼▲▶** Arrow Key (◀: Return to Up Directory)

**FILE INFO** Show File Info

**TIME SEARCH** Jump to Specific play time

**Brt.CONT** Set Luminosity, Colour Depth, Brightness

**MEDIA TYPE** Go to Media Type Selection Screen

## 3.10 Others

### 3.10.1 Music Slide Show

Make a 'music' folder (in lower case at root directory) of built-in HDD and save MP3 files at the folder.

When you play one or all photo files, you can listen mp3 and see photo slide show together.

### 3.10.2 MP3 Quick Play

Make a 'music' folder (in lower case) at root directory of built-in HDD and save MP3 files at the folder.

Turn on MEDIASTATION and just press [PLAY/PAUSE] button. MP3 files in the 'music' folder will be played automatically. Additionally, after rebooting MEDIASTATION, playback will recommence with the last file played.

### 3.10.3 Change Background Image

It is possible to change a background image on MEDIASTATION. Save 'mybg.jpg' at root directory of built-in HDD. Background image will be changed as 'mybg.jpg'.

\* Recommend to use 720x480 pixels image.

### 3.10.4 Firmware Upgrade

---

Download an upgrade file from the support pages of [www.verbatim-europe.com](http://www.verbatim-europe.com).

After connecting TV display, select the upgrade file and press [ENTER]. Upgrade is progressed automatically.

After finishing upgrade, you can check firmware version on Setup screen. Press [SETUP] button.

## Technical Support

---

If you are experiencing difficulty installing or using your Verbatim product, please visit the main Verbatim Technical Support website at [www.verbatim-europe.com](http://www.verbatim-europe.com). From this page you can access our library of user documentation, read answers to frequently asked questions, and download available software updates. Although most of our customers find this content sufficient to put them back on the right track, this page also lists ways in which you can contact the Verbatim Technical Support Team directly.

Europe: For technical support in Europe e-mail [drivesupport@verbatim-europe.com](mailto:drivesupport@verbatim-europe.com) or call 00 800 3883 2222 in the following countries: Austria, Belgium, Denmark, Finland, France, Germany, Hungary, Italy, Luxembourg, Monaco, Netherlands, Norway, Poland, Portugal, Republic of Ireland, Spain, Sweden, Switzerland and the United Kingdom. All other countries call +353 61 226586.

## Limited Warranty Terms

---

Verbatim Limited warrants this product to be free from defects in material and workmanship for a period of 2 years from date of purchase. This warranty excludes batteries. If this product is found to be defective within the warranty period, it will be replaced at no cost to you. You may return it with your original cash register receipt to the place of purchase or contact Verbatim.

In the following European countries, Austria, Belgium, Denmark, Finland, France, Germany, Greece, Hungary, Italy, Luxembourg, Monaco, Netherlands, Norway, Poland, Portugal, Republic of Ireland, Spain, Sweden, Switzerland, and the United Kingdom call 00 800 3883 2222. All other European countries call +353 61 226586. You can email [drivesupport@verbatim-europe.com](mailto:drivesupport@verbatim-europe.com).

Product replacement is your sole remedy under this warranty, and this warranty does not apply to normal wear or to damage resulting from abnormal use, misuse, abuse, neglect or accident, or to any incompatibility or poor performance due to the specific computer software or hardware used. VERBATIM WILL NOT BE LIABLE FOR DATA LOSS OR ANY INCIDENTAL, CONSEQUENTIAL OR SPECIAL DAMAGES, HOWEVER CAUSED, FOR BREACH OF WARRANTIES OR OTHERWISE. This warranty gives you specific legal rights and you may also have other rights which vary from state to state or country to country

## WEEE Notice

---

The Directive on Waste Electrical and Electronic Equipment (WEEE), which entered into force as European law on 13th February 2003, resulted in a major change in the treatment of electrical equipment at end-of-life.



The WEEE logo (shown at the left) on the product or on its box indicates that this product must not be disposed of or dumped with your other household waste. For more information about electronic and electrical waste equipment disposal, recovery, and collection points, please contact your local municipal household waste disposal service or shop from where you purchased the equipment.

## FCC Compliance

---

This equipment has been tested and found to comply with the limits for a Class B digital device, pursuant to Part 15 of the FCC Rules. These limits are designed to provide reasonable protection against harmful interference in a residential installation. This equipment generates, uses and can radiate radio frequency energy and, if not installed and used in accordance with the instructions, may cause harmful interference to radio communications. However, there is no guarantee that interference will not occur in a particular installation. If this equipment does cause harmful interference to radio or television reception, which can be determined by turning the equipment off and on, the user is encouraged to try to correct the interference by one or more of the following measures:

Reorient or relocate the receiving antenna.

Increase the separation between the equipment and receiver.

Connect the equipment into an outlet on a circuit different from that to which the receiver is connected.

Consult the dealer or an experienced radio/TV technician for help.

## **CE Declaration**

# **EC DECLARATION OF CONFORMITY**

---

It is hereby declared that this product complied with the essential protection requirements of Council Directive 89/336/EEC and its amendments on the approximation of the laws of the Member States relating to electromagnetic compatibility.

This declaration applies to all specimens manufactured identical to the model submitted for testing/evaluation.

EN 55022: 1998 + A1: 2000 + A2: 2003

EN 61000-3-3:1995 + A1: 2001

EN 55024: 1998 + A1: 2001 + A2: 2003

IEC 61000-4-2: 1995 + A1: 1998 + A2: 2000

IEC 61000-4-3: 2002 + A1: 2002

IEC 61000-4-4: 1995 + A1: 2000 + A2: 2001

IEC 61000-4-5: 1995 + A1: 2000

IEC 61000-4-6: 1996 + A1: 2000

IEC 61000-4-8: 1993 + A1: 2000

IEC 61000-4-11: 1994 + A1: 2000

## **RoHS Compliance**

---

This product is in compliance with Directive 2002/95/EC of the European Parliament and of the Council of 27 January 2003, on the restriction of the use of certain hazardous substances in electrical and electronic equipment (RoHS) and its amendments.

THIS DEVICE COMPLIES WITH PART 15 OF THE FCC RULES. OPERATION IS SUBJECT TO THE FOLLOWING TWO CONDITIONS:

(1) THIS DEVICE MAY NOT CAUSE HARMFUL INTERFERENCE, AND

(2) THIS DEVICE MUST ACCEPT ANY INTERFERENCE RECEIVED, INCLUDING INTERFERENCE THAT MAY CAUSE UNDESIRE OPERATION.

## Free Manuals Download Website

<http://myh66.com>

<http://usermanuals.us>

<http://www.somanuals.com>

<http://www.4manuals.cc>

<http://www.manual-lib.com>

<http://www.404manual.com>

<http://www.luxmanual.com>

<http://aubethermostatmanual.com>

Golf course search by state

<http://golfingnear.com>

Email search by domain

<http://emailbydomain.com>

Auto manuals search

<http://auto.somanuals.com>

TV manuals search

<http://tv.somanuals.com>