



Osprey[®] 240e/450e User Guide
AVStream Driver Version 4.6

© 2012 ViewCast Corporation. All rights reserved.

Osprey® and SimulStream® are registered trademarks of ViewCast Corporation. Microsoft®, Windows®, Windows Server® 2003, AVStream®, DirectShow®, Intel® CoreDuo®, and Windows Media® Encoder are trademarks or registered trademarks of Microsoft Corporation. Any other product names, trademarks, trade names, service marks, or service names owned or registered by any other company and mentioned herein are the property of their respective companies.

No part of this specification may be reproduced, transcribed, transmitted or stored in a retrieval system in any part or by any means without the express written consent of ViewCast Corporation. ViewCast Corporation reserves the right to change any products herein at any time and without notice. ViewCast Corporation makes no representations or warranties regarding the content of this document, and assumes no responsibility for any errors contained herein.

UL Statement

Underwriters Laboratories Inc. has not tested the performance or reliability of the security or signaling aspects of this product. UL has only tested for fire, shock and casualty hazards as outlined in UL's standard for safety UL 60950-1. UL certification does not cover the performance or reliability of the security or signaling aspects of this product. UL MAKES NO REPRESENTATIONS, WARRANTIES OR CERTIFICATIONS WHATSOEVER REGARDING THE PERFORMANCE OR RELIABILITY OF ANY SECURITY OR SIGNALING RELATED FUNCTIONS OF THIS PRODUCT.

To maintain UL compliance, this product to be used only with UL Listed computers that include instructions for user installed accessories.



FCC Notice:

WARNING: Use shielded cables to connect this device to peripherals in order to maintain compliance with FCC radio emission limits.

WARNING: Modifications to this device not approved by ViewCast Corporation could void the authority granted to the user by the FCC to operate the device.

The Osprey 240e video capture card has been tested and found to comply with the limits for a Class B digital device, pursuant to Part 15 of the FCC Rules. These limits are designed to provide reasonable protection against harmful interference in a residential installation. This equipment generates uses and can radiate radio frequency energy and, if not installed and used in accordance with the instructions, may cause harmful interference to radio communications. However, there is no guarantee that interference will not occur in a particular installation. If this device does cause harmful interference to radio or television reception the user is encouraged to try to correct the interference by one or more of the following measures:

- Reorient or relocate the receiving antenna.
- Increase the separation between the equipment and receiver.
- Connect the computer into an outlet on a circuit different from that to which the receiver is connected.
- Consult the dealer or an experienced radio/TV technician for help.

If the above measures are unsuccessful, please consult the dealer or manufacturer of your radio or television receiver, or speak with an experienced radio/TV technician.

Note: This reminder is provided to call to the CATV installer's attention Section 820-40 of the NEC, which provides guidelines for proper grounding and, in particular, specifies that the cable ground shall be connected to the grounding and, in particular, specifies that the cable ground shall be connected to the grounding system of the building, as close to the point of cable entry as practical.

The Osprey 450e video capture card has been tested and found to comply with the limits for a Class A digital device, pursuant to Part 15 of the FCC Rules. These limits are designed to provide reasonable protection against harmful interference when the equipment is operated in a commercial environment. This equipment generates, uses, and can radiate radio frequency energy and, if not installed and used in accordance with the instruction manual, may cause harmful interference to radio communications. Operation of this equipment in a residential area is likely to cause harmful interference in which case users will be required to correct the interference at their own expense.

Shielded Cables: Connections between this device and peripherals must be made using shielded cables in order to maintain compliance with FCC radio emission limits.

Modifications: Modifications to this device not approved by ViewCast Corporation could void the authority granted to the user by the FCC to operate the device.

Note to CATV Installer: Section 820-40 of the NEC provides guidelines for proper grounding and, in particular, specifies the cable ground shall be connected to the grounding system of the building, as close to the point of cable entry as practical.

Product Disposal Information



Dispose of this product in accordance with local and national disposal regulations (if any), including those governing the recovery and recycling of waste electrical and electronic equipment (WEEE).

RoHS Compliant: ViewCast Corporation is committed to compliance with the European directive on the Restriction of the Use of Certain Hazardous Substances in Electrical and Electronic Equipment, Directive 2002/95/EC, the RoHS directive.



For current RoHS statement, visit www.viewcast.com.

ViewCast Corporation 3701 W. Plano Parkway, Suite 300, Plano, TX 75075-7840 USA

Contents

Overview	1
Warranties	1
System requirements.....	2
Minimum system requirements	2
Installation Steps	3
Installing the driver	3
Custom installing AVStream	4
Installing the video capture card	4
Setting Driver Properties	7
OspreyConfig's initial processing sequence	8
Understanding the device properties window	11
Devices and global controls	13
Input tab.....	14
Osprey 450e AV option hardware add-on-device	16
Video input.....	17
Video standard.....	18
Input Format: analog inputs	19
VideoCheck	20
VideoGraph	20
VbiGraph	21
Video Proc Amp tab	22
Video Decoder tab	24
RefSize tab.....	26
Horizontal Format.....	27
Horizontal Delay.....	28
Source Width	29
Reference Size for Crop and Logo Placement.....	30
525-Line (NTSC) Vertical Format.....	31
Filters tab	32
SimulStream	33
Deinterlace.....	36
Currently Using group.....	38
Adaptive Deinterlace window.....	39

Device tab	42
No-Video Test Pattern	43
Buffers Requested.....	43
Diagnostic logging.....	44
Device Info	46
Board Numbering.....	46
Extras.....	49
Captions tab	50
Pin Select.....	51
Render NTSC Closed Captions On Video.....	52
Render Logical White As	52
CC Pin	53
Logo tab	54
Pin Select.....	56
File and Color	56
Enable Key Color	57
Weighting.....	58
Position and Size	58
Size and Crop tab	60
Pin Select.....	61
Reference Size.....	61
Granularity	62
Enable Cropping.....	63
Default Output Size.....	65
AVStream driver reference information.....	67
Post-Processing mode.....	69
Efficient Video Rendering	71
Preview Pin to Video Renderer.....	71
Preview Pin to Overlay Mixer to Video Renderer.....	71
Preview Pin to VMR7	72
Preview Pin to VMR9	73
Some Data Points.....	73
Video standards and sizes.....	75
Color formats	75
YUV format details.....	76
Closed captioning (CC)	77
Captioning via CC or VBI pins.....	77
Direct CC rendering on video.....	78
CC streaming interface.....	79
Vertical Interval Timecode (VITC)	79
Vertical Blanking Interval (VBI) capture.....	80

Audio driver	81
Selecting the audio source and input volume	81
Audio properties page	83
Audio formats	84
Audio playback.....	84
Audio configuration	84
Mono Source Mode	84
Dual Mono	84
Audio level	86
Appendix A: Osprey hardware specifications	87
Osprey 240e	87
Environmental specifications.....	87
Osprey 450e	89
Appendix B: Osprey 450e audio cable	91
Appendix C: Troubleshooting	93
Color bars on video screen	93
Scrambled video image.....	93
Poor video quality at large frame sizes.....	94
Multiple horizontal lines across video image	94
Cannot play back recorded audio	94
Audio recording control comes up with wrong device and wrong inputs	94
Index	97

Overview

Thank you for purchasing the ViewCast Osprey 240e/450e video capture card. This user guide provides step-by-step instructions for installing and using your new video capture card. For the latest ViewCast product information and news, visit our website at www.viewcast.com.

Warranties

For complete warranty details, refer to the specific warranty included with each product. General warranty information includes the following:

Limited Warranty

ViewCast warrants its hardware products against defects in material and workmanship under normal use for the period of one year (12 months) from date of sale. Where specific warranties exist that provide more substantial coverage, notwithstanding the warranty provisions herein, such product warranties control and preempt or supersede the warranty provisions herein.

Reseller Pass Through of Standard Limited Warranties.

Resellers pass the ViewCast standard limited warranties for the products through to the customer without modification. Any modification of a product voids the ViewCast warranties or any other existing or available warranty.

System requirements

The following system requirements relate to your Osprey® video capture card only. The video capture or encoding applications you use will likely require a much more powerful system than that which is listed below. Please consult your software documentation for applicable system requirements.

Minimum system requirements

- Direct Mode: 2 GHz Intel® Pentium® 4 processor or equivalent
- PostProcessing Mode and SimulStream®: 2 GHz Intel® Pentium® 4 processor or equivalent, 3 GHz recommended
- Microsoft® Windows® Professional or Home Edition, Windows Server® 2003
- Up to 7.5 MB of available hard disk space
- 256 MB of RAM, 512 MB recommended
- One available PCI Express® slot

Installation Steps

In all cases, use the setup.exe program on the product CD or in the web package if you downloaded it. The setup program automates the Plug and Play steps needed to install the drivers and ensures they are performed correctly. It also installs the bundled applets and User's Guide. If you have multiple Osprey capture cards in the system it configures all of the boards at the same time.

We recommend this method especially if Osprey software does reside on your host computer. After the install is run, the software detects the card and its drivers initiate automatically.

If you are updating Osprey software, first uninstall the previous software version, reboot your computer, and then install the update.

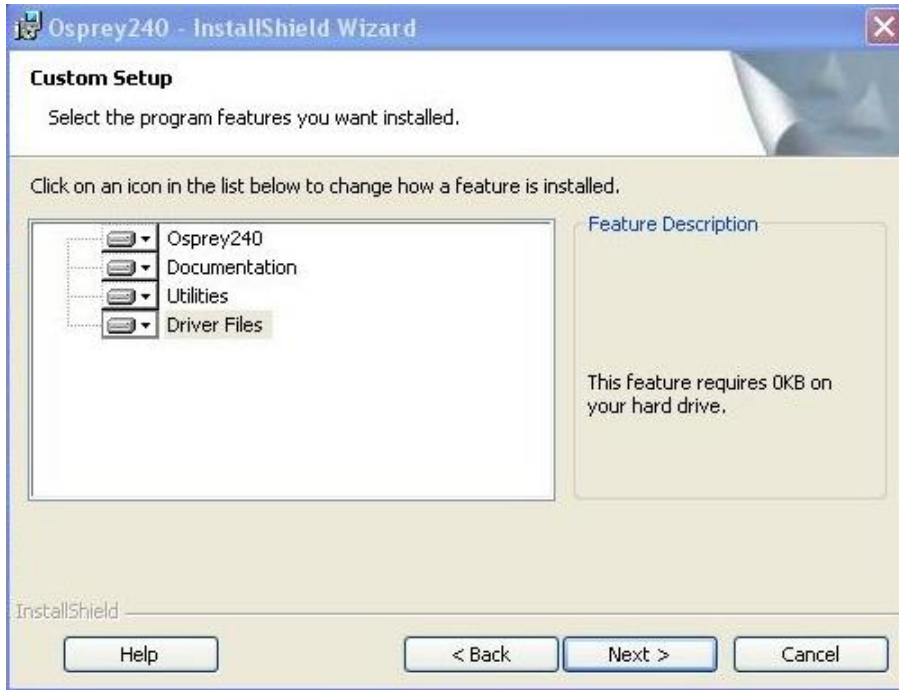
Installing the driver

Insert the Osprey Software CD into your CD-Rom drive. The main menu for the Osprey software appears if you enable autoplay. If the main menu does not automatically appear, click on the Window's computer icon and select the CD-Rom and the setup.exe icon. The Osprey A/VStream – Install Shield Wizard engages and guides you through the installation process.

Custom installing AVStream

During the installation process, if you choose a Custom installation, your options are limited (Figure 1).

Figure 1. Osprey 240e Custom Setup screen



This window allows you to choose individual components you may want to install. You can also change the location where components install.

Installing the video capture card

This manual covers one class of Osprey devices that include two PCI Express cards.

Class 6: o-240e, o-450e and related non-DSP PCI Express products

Both cards use the same driver. If you add a card from a different class, then you need to install the driver for that card.

When you add or move boards after the AVStream 4.6 driver is already installed, there are two possibilities:

- You add a board of a different class from what is already in the machine. For example, an Osprey 240e is already in the machine with the current driver installed, and you want to add an Osprey 530. For this case, you have to obtain and install the driver install package for the new board.
- You move a board from one slot to another, or if you add another board of the same type. For example, you might have an Osprey 240e in the machine, and want to add another Osprey 240e. In this case, the following sequence begins.

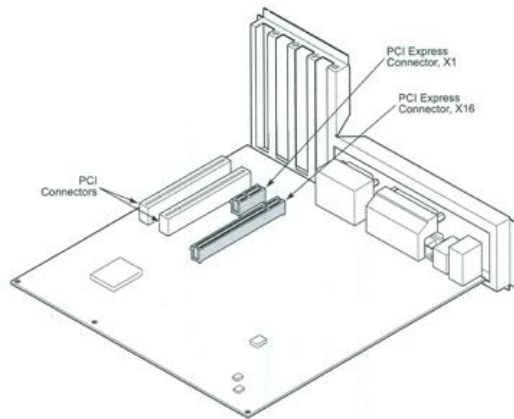
All computer cards are sensitive to electrostatic discharge. Slight electrostatic discharges from clothing or even from the normal work environment can adversely affect these cards. By following these simple guidelines, however, you can minimize the chance of damaging the Osprey video capture card.

- Handle cards only by the non-conducting edges.
- Do not touch the card components or any other metal parts.
- Wear a grounding strap while handling the cards (especially when located in a high static area).
- Properly ground your computer to avoid static discharge.
- Ensure the workstation is powered off before installing any components.
- If you are not familiar with how to install a PCI Express® bus card, refer to the system's documentation for more complete, step-by-step instructions.
- Install the card only in UL Listed computers that include instructions for user-installed accessories

To install the video capture card:

1. Power down and unplug your computer.
2. Remove the computer's cover and locate an empty PCI Express slot.

WARNING! Be sure to install the card in the PCI Express slot. This slot is usually black. Refer to the following diagram as a guide. Placing the card in the wrong slot can damage the card.



3. Remove the cover screw from the empty PCI Express slot's cover, set the screw aside.
4. Remove the slot cover.
5. Remove the Osprey video capture card from its anti-static bag.
6. Insert the Osprey card into the desired PCI Express slot and make sure it is seated evenly.
7. Secure the back panel of the card with the slot's cover screw.
8. Replace the computer cover.
9. Plug in and turn the computer on.

The New Hardware Wizard runs and the Found New Hardware window appears followed by the Digital Signature Not Found window (Figure 2)

Figure 2. Digital Signature Not Found Window



1. Click **Continue Anyway**. The Controller installing window displays, and the text inside this window changes to Osprey Video Capture Device, Installing ... Then the Digital Signature Not Found window appears on top of it.
2. Click **Continue Anyway**. The Completing the Found New Hardware window displays.
3. Click **Finish**. The Digital Signature Not Found window displays. This window displays once for each Osprey board you are installing. The Systems Setting Change window displays.
4. Click **Finish** and click **Yes** to restart the system now (Figure 3).

Figure 3. System Settings Change Window



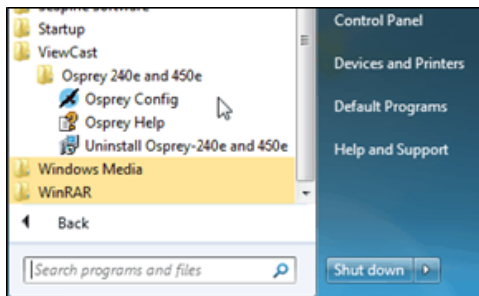
Setting Driver Properties

After installing the Osprey card and AVStream driver, you need to access the card's settings and possibly modify them to fit your needs. This manual takes you step-by-step visually through the card settings. Start by opening the Osprey Config utility. Afterwards, we can explore the driver.

You need to use a DirectShow application such as Microsoft Windows Media® Encoder or RealProducer®. We also access card property pages through Osprey Config, the utility bundled with our 4.6 driver suite. Once installed you can see the card's default settings and change them as needed.

To open Osprey Config click **All Programs** in the Start menu of your Windows computer ➤ **ViewCast** ➤ **Osprey 240e and 450e** ➤ **Osprey Config** (Figure 4).

Figure 4. Accessing the Osprey Config Utility

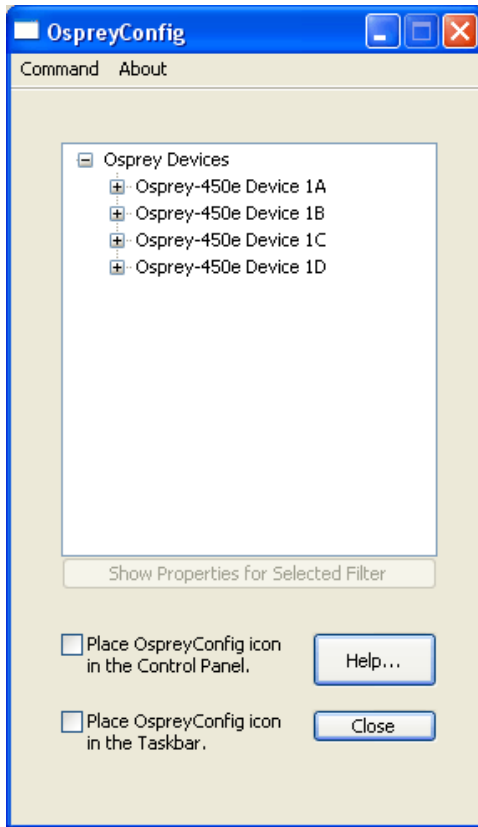


Note: Other DirectShow applications can find the property page too. If you use a third-party application, you will find how to access the card's settings in the third-party application's documentation.

OspreyConfig's initial processing sequence

After clicking on the Osprey Config icon, the first screen of the application appears (Figure 5) showing the cards and devices installed on your computer.

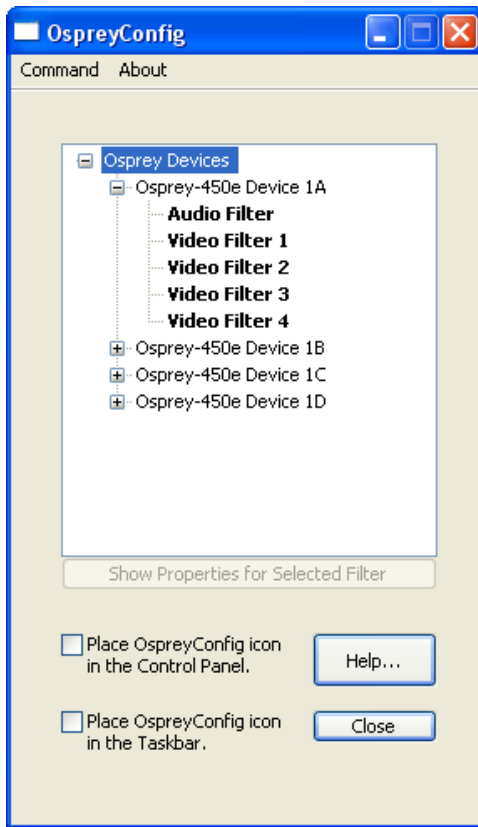
Figure 5. Initial OspreyConfig user interface



In this example, the computer in use has one card and four devices. The card can take a single input and stream the content differently, for example, you can use several bit rates, sizes, and formats. Click the + icon on the left side of the device you wish to configure, to change the properties of that device.

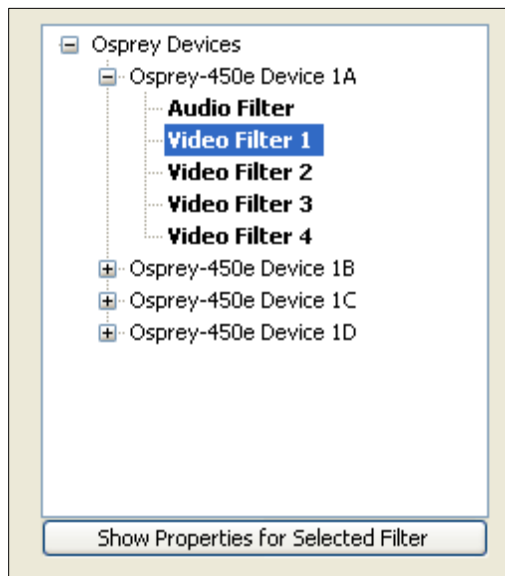
Figure 6 shows the user interface that appears when you select a filter. We expanded the Osprey 450e Device 1A and selected Video Filter. We'll continue with this device unless we indicate otherwise.

Figure 6. Selecting a device for configuration



When you choose Device 1A and Video Filter 1, the **Show Properties for Selected Filter** button becomes active (Figure 7).

Figure 7. Control used to open the properties page

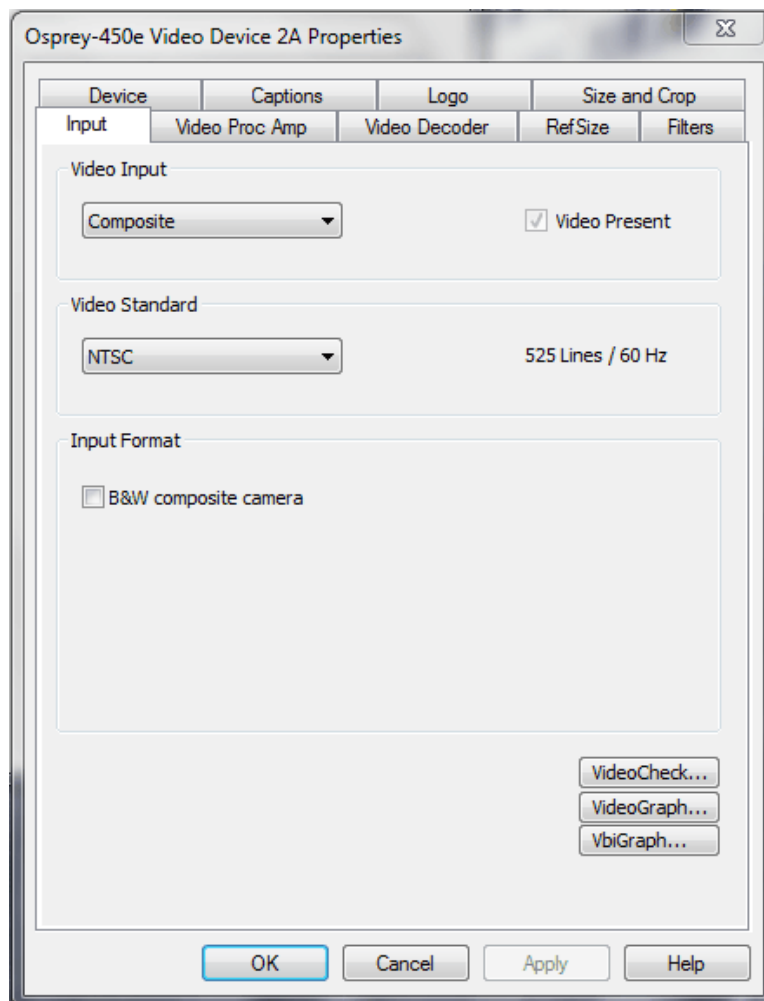


Understanding the device properties window

Osprey's device properties window enables you to view and change the default settings of the 4.6 driver. Once you are familiar with the video card's properties, you can make changes to get the optimum performance from your card and change settings in real time.

Device properties are visible through tabs to select different controls (Figure 8). The 4.6 driver includes changes from previous versions - the tabs have changed. They now take advantage of the 4.6 driver's advances and added functionality.

Figure 8. Osprey Video Device Properties window tabs



The Osprey 240e and Osprey 450e use the same driver. The same Video Device properties appear whether you choose the Osprey 240e or the Osprey 450e. If you have other Osprey cards, they can still coexist on your PC, but they use a separate version of the drivers provided with the card. You need the driver version for video capture cards you use.

The Osprey 240e and 450e cards have the following tabs:

Input	Select the video input, NTSC / PAL / SECAM video standard and Input Format
Video Proc Amp	Set brightness, contrast, saturation, hue, gamma, and sharpness
Video Decoder	Select the video standard – NTSC, PAL, SECAM
RefSize	Set the reference size for cropping
Filters	SimulStream [®] , processing mode, gamma, deinterlace, and inverse telecine*
Device	Test Pattern, Capture Buffers, Diagnostic Logging
Captions	Set up on-video closed caption rendering
Logo	Set up on-video logos
Size and Crop	Set the default size, enable cropping, set the cropping rectangle

* Telecine refers to the technology used to transfer or repurpose analog film into electronic media.

Some of the 4.6 drivers' controls work interactively and changes in value immediately update the video. Examples include brightness, contrast, hue, saturation, and sharpness.

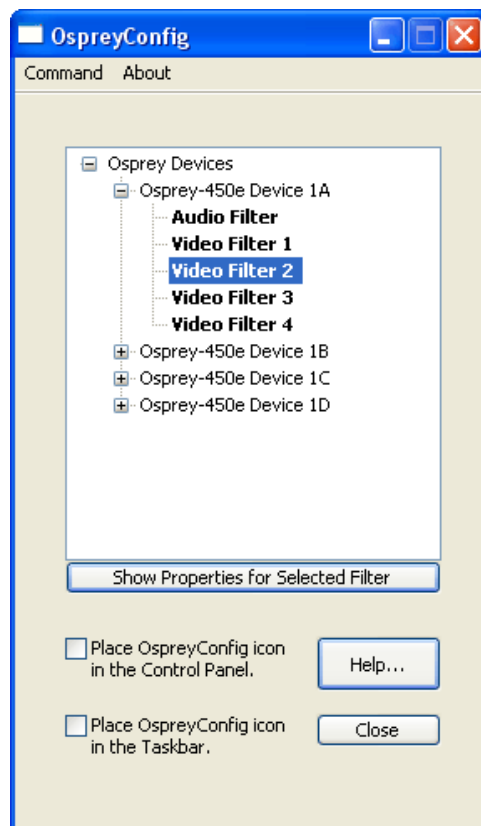
Devices and global controls

The Osprey 240e and Osprey 450e video capture cards can present multiple output streams from a single input device. For example, a company may wish to do a webcast globally to resellers, users, or potential customers. Using the Filters tab, you can set up different output streams with different bit rates to accommodate users with different bandwidths.

Some changes may affect the filter, such as cropping, logos, and captions. For example, changes to the Osprey 450e Device 1A, Filter 2 only affect that filter (Figure 9).

Change the values on Video Proc Amp, Video Decoder, Input, Filters, Device, and/or RefSize tabs and the effect is global to the card. All characteristics on each device on the card change to those changed on a single device. This is limited to the card on which the device changed. If you make changes on an Osprey 240e card residing with an Osprey 450e card, a change on the Osprey 240e does not affect the Osprey 450e devices.

Figure 9. OspreyConfig utility to access devices

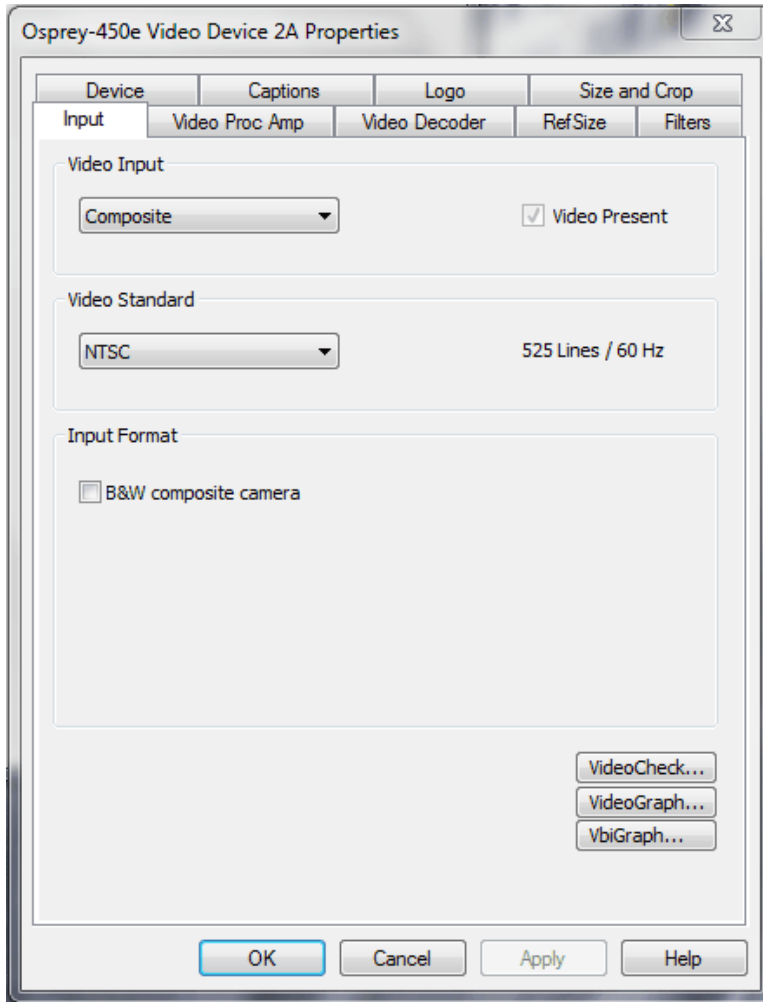


DirectShow® discussions refer to *pins* and *filters*. These terms require technical experience with Microsoft's DirectX® 9 Software Developer's Kit. References on tabs in the Osprey driver relate to terms used by Microsoft's streaming video software application. They exist for users with a high degree of technical expertise. You can simply ignore them and use the property tabs as discussed in this manual.

Input tab

The source of data from an Osprey 240e/450e that streams to the Internet can come from a number of devices such as DVD players, digital cameras, camcorders, and so forth.

Figure 10. Input tab



The controls on the Input tab of the driver properties card have a global effect on the Osprey capture card on which they reside. If you have multiple Osprey cards, and you want to make global changes, you have to make the change on each card.

The Input tab has the following controls.

Video Input	The Video Input section of the tab allows you to select the video signal source.
Video Present	This indicator is enabled when video is present.
Video Standard	The Video Standard allows you to select the standard different countries or geographical areas use (Figure 10) from the drop-down list.
Input Format	This control works with digital cameras routing through the Osprey's card's analog input.
VideoCheck	This button opens a simple video monitoring window.
VideoGraph	This button launches a vectorscope/lumascope utility.
VbiGraph	This button opens an applet that displays the raw waveforms of the video's Vertical Blanking Interval (VBI).
OK	Click OK to accept the settings.
Cancel	Click Cancel to reject the settings and close the window.
Apply	Click Apply to apply the settings.
Help	Click Help to access the user guide.

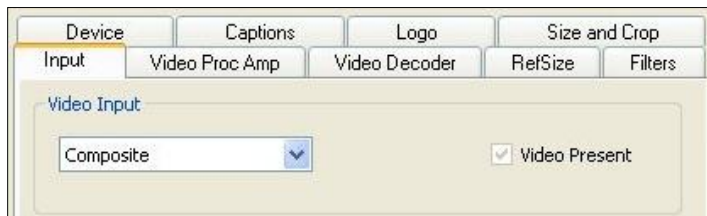
Osprey 450e AV option hardware add-on-device

In addition to the standard components built into the Osprey 450e card, you can purchase the Osprey 450e AV Option hardware add-on device.

The AV Option exposes additional inputs for Component and S-Video as well as balanced audio. For example, when you choose a Filter from standard Osprey 450e Device 1A; the default option provides a single video capability: Composite.

Note: Use Osprey Config to set balanced audio for Microsoft® Windows Media Encoder.

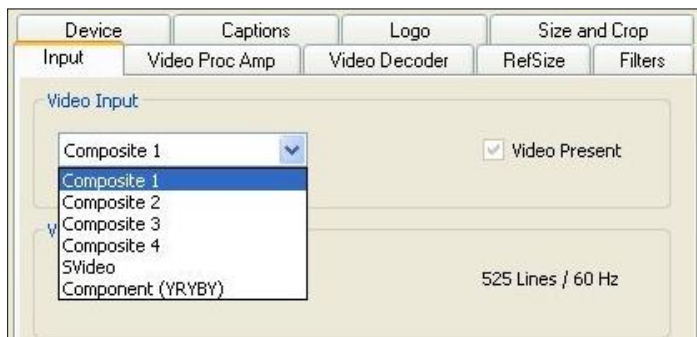
Figure 11. Input tab without AV option



Without the AV hardware option the default input standard is limited to Composite. With the optional add-on, you also have Composite 1,2,3,4, S-Video and Component YRYBY (Figure 11 and Figure 12).

Note: Separate video, abbreviated S-Video (also known as Y/C) is an analog video signal that carries the video data as two separate signals. They include luma (~brightness) and chroma (~color).

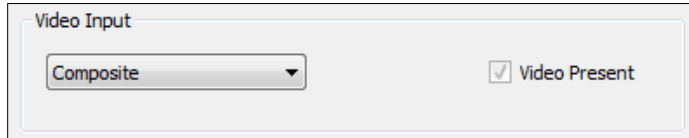
Figure 12. Osprey 450e card with optional plug-in



Video input

The Video Input (Figure 16) lets you select the video signal source from a drop-down list.

Figure 13. Video Input field



Osprey 240e

The Osprey 240e is a single channel card. It has multiple video inputs, but you can select only one of them at a time. The inputs that are selectable depend on the type of dongle used. Two types of dongles are available for this board – Composite/SVideo, and YPrPb.

The connections for the Composite/SVideo dongle are shown in Figure 14.

Figure 14. Composite/SVideo dongle connections



The YPrPB dongle is primarily for YPrPb (Component) inputs, as shown in

Figure 15. YPrPb dongle connections



The blue Pb input can also be used as a Composite input. The driver should be set to Composite when the Pb input is used this way.

Osprey 450e

The Osprey 450e has four separate independent video channels that can run simultaneously. You can use the board with or without an optional auxiliary expansion connector.

When the expansion connector is not installed, the only video inputs available are the Composite BNC inputs on the board's mounting bracket. The four connectors correspond from top to bottom to channels A, B, C, and D. In this case, the Video Input control shows just the one input for each channel, which is selected automatically.

The Osprey -450e's optional auxiliary expansion connector for video adds three additional inputs, over three multi-purpose physical connectors for each of the four channels:

- Component (YprPb) uses all three of the auxiliary video connectors
- S-Video (Y-C) connects an SVideo connector to two of the connectors via an adapter cable
- Three additional Composite inputs

The labeling on the expansion panel shows which connectors to use for each purpose. The inputs for each channel, along with the channel's bracket connector, can only be used one at a time. The hardware automatically senses at system start whether the expansion connector is plugged in, and if it is then six inputs appear in the Video Input drop-down list.

Changes to the video input take effect as soon as you click **Apply** or **OK**.

Video standard

Figure 16. Video Standard field

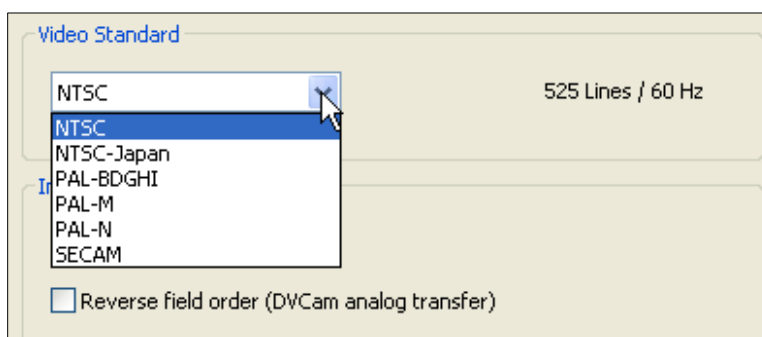


The Video Standard control group is a copy of the controls on the Video Decoder tab.

The North American standard is NTSC. The Japanese standard is NTSC-Japan. The five PAL standards, B, D, G, H, and I are similar, and are treated the same way by the Osprey driver. The driver also supports PAL-M and N and SECAM video. The North American standard is NTSC. The Japanese standard is NTSC-Japan. The five PAL standards, B, D, G, H, and I are similar and treated the same way by the Osprey driver. The driver also supports PAL-M and PAL-N and SECAM video. PAL-N is the Argentine standard with a 3.58 MHz subcarrier. PAL-M is a standard that uses the PAL method of color encoding combined with an NTSC-type 525-line, 29.97 Hz frame format.

Changes to the video standard take effect as soon as you click Apply or OK. If video is currently streaming, you will not see correct video unless the signal format on the input is the same as the video standard you have just selected. If you are changing from a 625-line standard to a 525-line standard and your video is larger than the maximum size for the 525-line format, video will not restart until you adjust the video size to an allowed value.

Figure 17. Video Standard drop-down list



Input Format: analog inputs

Below the **Video Standard** drop-down list is the **Input Format** (Figure 18).

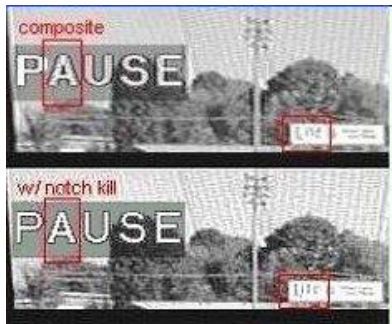
Figure 18. Input Format



On the Osprey 240e/450e, when an analog input becomes the media source, the controls provide adjustments that improve the clarity of video from monochrome sources. When you select a composite input line and attach a monochrome device, the result is a sharper image, as shown in the notch kill item in Figure 19. This control is only for true monochrome devices, without color capability.

B&W composite camera

Figure 19. Notch Kill



Black and white input sources are rare these days, but some do exist. For example, you may want to stream black and white historical film in a documentary film.

VideoCheck

VideoCheck opens a simple video monitoring window (Figure 20). You can see the immediate effect of changes to your settings. Most changes show up automatically as soon as you click **Apply**. You will need to click the applet's **Update** button to see a change that alters the output size of the video.

VideoCheck uses one preview stream of video. If you do not have SimulStream installed, you can only view one preview stream at a time from each device (this is in addition to the main capture stream). If VideoCheck does not work, the first thing to check is whether a preview stream is already running on the device.

Figure 20. VideoCheck



VideoGraph

VideoGraph launches a vectorscope/lumascope utility (Figure 21). VideoGraph is intended to be used with a color bar signal from a calibrated signal generator. It shows whether the signal and the card's Video Proc Amp settings are calibrated to the correct luma and chroma levels.

In Figure 21, the left hand panel shows the luma levels of standard 75 % NTSC color bars. The grey background shows the expected levels, and the red line shows the actual levels measured. The right hand panel shows the chroma positions of the six colors. The small colored squares show the expected positions, and the points on the red signal pattern should line up with them.

If there are discrepancies, you can use the driver's Brightness, Contrast, Saturation, and Hue controls on the Video Proc Amp property page to adjust the levels.

If you don't have a signal generator available, you can get a general idea of how VideoGraph works by disconnecting the input signal and running it with the 75 % or 100 % no-signal color bar test pattern. The driver's test pattern will line up exactly with the VideoGraph's targets – *if* the gamma setting is at the default position. Software-based Video Proc Amp controls alter the test pattern levels; hardware-based controls do not. The gamma control, and in some cases the hue control, are software-based.

The vertical slider adjusts which video line displays. You may have to move this slide so that a line that has color bar information is selected.

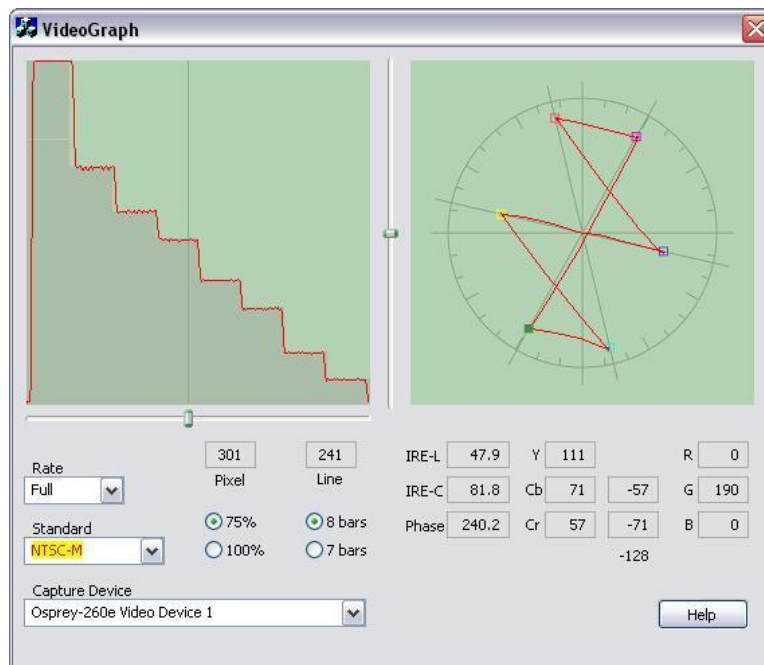
The horizontal slider moves the horizontal cursor – the vertical line on the luma display. The data displayed at the lower right – IRE-L, etc – is for the pixel selected by the horizontal cursor. Also, on the

chroma display, the small solid rectangular cursor corresponds to the luma cursor – that is, if the luma cursor is on the red color bar, the chroma cursor will be at or near the red point in the chroma display.

There are also controls to set the background markings for 75 % or 100 % signal levels, and for eight or seven bars – so that the markings correspond to the type of color bars your signal generator is making.

The **Help** button on the applet brings up a message box with an alternate, and slightly more technical description.

Figure 21. VideoGraph

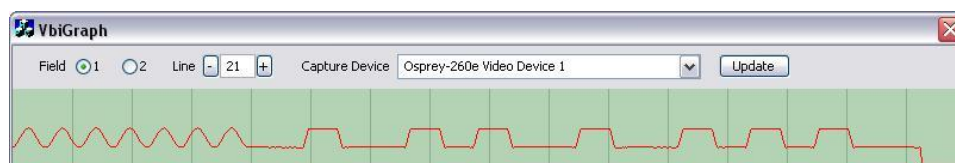


VbiGraph

VbiGraph (Figure 22) opens an applet that displays the raw waveforms of the video's Vertical Blanking Interval (VBI). The information on these lines may include closed captions (CC), wide screen signaling (WSS), vertical interval timecode (VITC), and teletext. The applet is useful as a diagnostic if the expected data is not being decoded – you can see if the required signal is there at all, whether it is in spec, and which line it is on.

The controls select the field and line to be displayed. The only time you need the Update button is when you switch between 525-line and 625-line video standards.

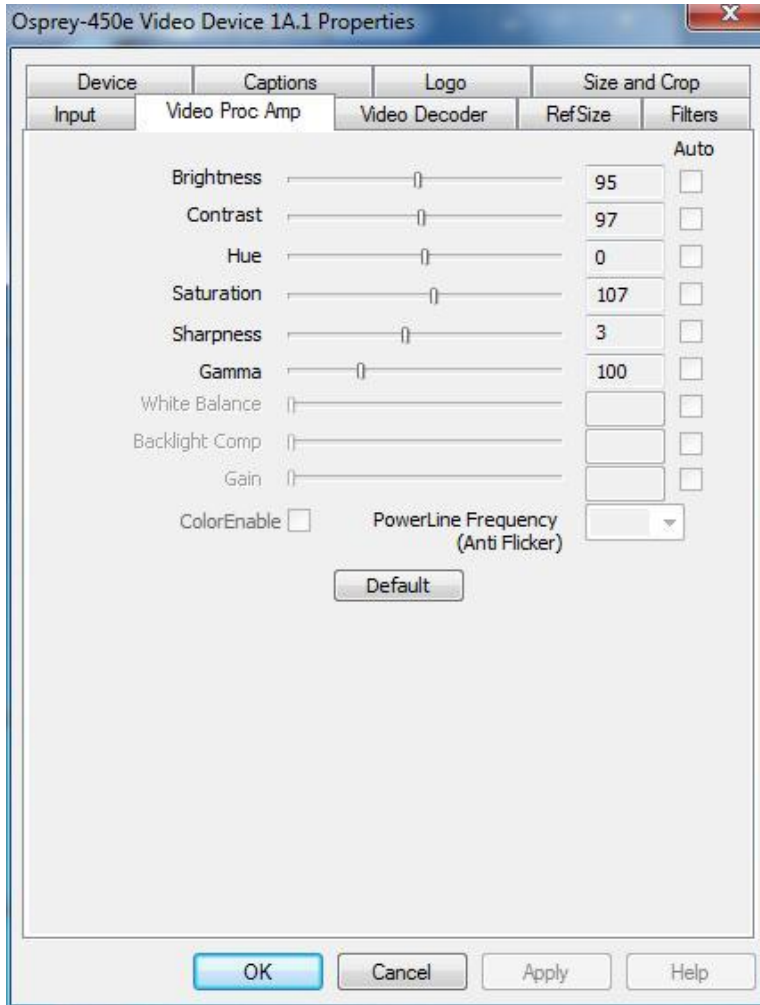
Figure 22. VbiGraph



Video Proc Amp tab

Video Proc Amp stands for Video Process Amplifier. It controls various characteristics of streaming output from Osprey 240e/450e cards. The Video Proc Amp is the second tab from the left of the Device 1A properties (Figure 23).

Figure 23. Video Proc Amp Tab



The Video Proc Amp uses slider controls to adjust brightness, contrast, hue, saturation, sharpness, and gamma. If you're using the preview or capture mode in real-time, then you can see your adjustments as you make them with the Video Proc Amp controls.

The Video Proc Amp tab has the following controls.

Brightness and Contrast	These terms are used for contrast ratio. It's a measure of a display system, defined as the ratio of the brightest color (white) to that of the darkest color (black) that the system can produce. A high contrast ratio is a desired aspect of any display, but with the various methods of measurement for a system or its part, different measured values can sometimes produce similar results. The control exists in the event you need to change the ratio of an incoming signal.
Hue	Hue adjustment only functions for NTSC video. It sets the predominance of color, classed as red, yellow, green, blue or an intermediate color based on a contiguous pair of these colors
Saturation	In color theory, saturation or purity refers to the intensity of a specific hue. A highly saturated hue has a vivid, intense color, while a less saturated hue appears more muted and grey. With no saturation at all, the hue becomes a shade of grey. You are able to adjust the saturation level in the event it is altered by a video feed.
Sharpness	This slider has eight positions corresponding to eight hardware filter settings. Generally, the positions to the left result in smoother video, the positions to the right result in sharper video. Since each step engages a different combination of discrete filters, some steps may result in slight differences while other steps may result in large differences. The range is 0 to 7.
Gamma	You will rarely need to use this control. In simple terms, the input of a feed from a device into your card may not match the digital output on your screen. The gamma control enables you to balance the red, blue, and green from the input to output within the normal range of people's perceptions.
White Balance	This field is an unused DirectShow feature and is not selectable.
Backlight Comp	This field is an unused DirectShow feature and is not selectable.
Gain	This field is an unused DirectShow feature and is not selectable.
Color Enable	This field is an unused DirectShow feature and is not selectable.
PowerLine Frequency (Anti Flicker)	This field is an unused DirectShow feature and is not selectable.
Default	Click Default to return to the default settings.
Auto	This field is an unused DirectShow feature and is not selectable.
OK	Click OK to accept the settings.
Cancel	Click Cancel to close the window.
Apply	Click Apply to apply the settings.
Help	Click Help to access the user guide.

For all of the Video Proc Amp controls the driver maintains one setting per Osprey device. It does not maintain individual settings for each input or type of input.

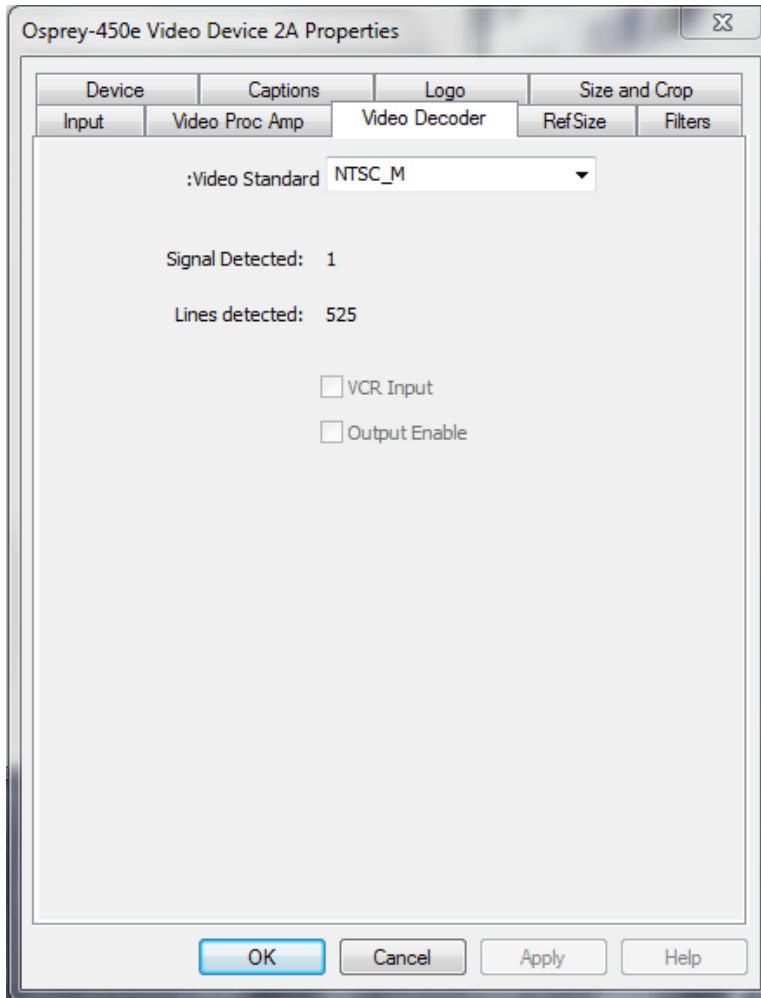
When you change the video standard or input you will not see changes in the slider controls – such as the Hue button becoming disabled – until the driver properties dialog is closed and re-entered.

Video Decoder tab

The Video Decoder tab is a Microsoft DirectShow standard control for setting the NTSC/PAL/SECAM video standards (Figure 24).

Note: These controls are also on the Input tab. Most users find the Input tab more convenient to use.

Figure 24. Video Decoder tab



Changes apply to all video preview and captures pins on the currently selected device. If you have multiple Osprey cards, you can set the input individually for each of them. Changes made with this control take effect immediately. If video is running and you select a standard that does not match the incoming signal, the video is likely to freeze or glitch until the signal matches the correct standard.

Osprey boards support the Signal Detect (0 or 1) and Lines Detected (525 or 625) status readouts. They do not support the VCR Input or Output Enabled controls, which will always be disabled.

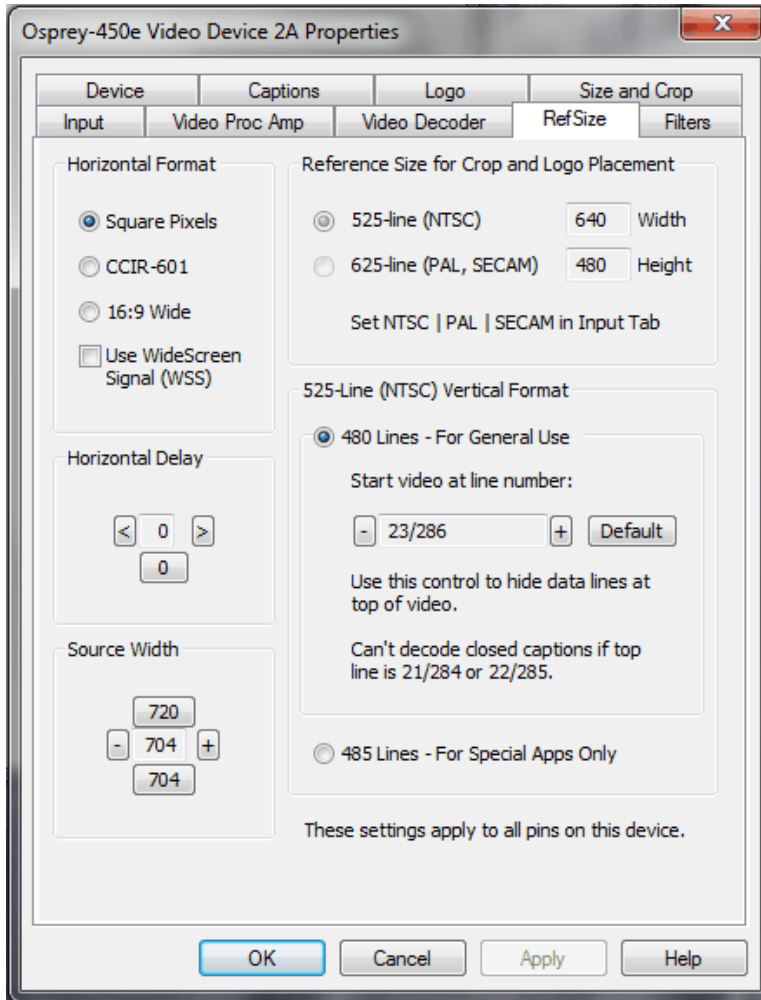
The Video Decoder tab has the following controls.

Video Standard	Select the video standard
Signal Detected	When the card does <i>not</i> detect the input signal, this field displays a 0. When the card detects the input signal, it displays 1.
Lines detected	This field displays the number of lines the card detects in the input signal.
VCR Input	This field is a DirectShow feature that is not implemented.
Output Enable	This field is a DirectShow feature that is not implemented.
OK	Click OK to accept the settings.
Cancel	Click Cancel to reject the settings and close the window.
Apply	Click Apply to apply the settings.
Help	Click Help to access the user guide.

RefSize tab

Changes made to the RefSize tab (Figure 25) apply to all video previews and captures on the currently selected device. The RefSize tab controls the features related to the reference size, format, and proportions of the video. Most users can set up this page once and only refer to it occasionally since this page does not provide everyday control for the final output size of your video. You'll likely control final output size from your application, the Size and Crop tab, or from the Pin Properties dialog described in the next section.

Figure 25. RefSize tab



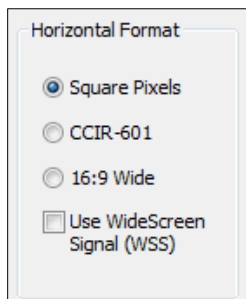
The RefSize tab has the following controls.

Horizontal Format	Sets the horizontal mode for the output. Options include Square Pixels, CCIR-601 setting, 16:9 Wide, and Use WideScreen Signal control.
Horizontal Delay	The horizontal delay control moves the video horizontally in the capture or preview frame.

Source Width	The Source Width control can be used to trim the black left and right edges of an image.
Reference Size for Crop and Logo Placement	This part of the dialog box displays the results of more fundamental settings made elsewhere in the dialog box.
525-Line (NTSC) Vertical Format	This control is for NTSC users. It has no effect for PAL and SECAM 625-line video standards.
OK	Click OK to accept the settings.
Cancel	Click Cancel to reject the settings and close the window.
Apply	Click Apply to apply the settings.
Help	Click Help to access the user guide.

Horizontal Format

Figure 26. Horizontal Format



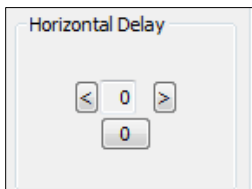
The Horizontal Format has the following controls.

Square Pixels	Use the Square Pixels setting for normal 4:3 video (Figure 26) that is viewed via a computer monitor. This setting results in a square aspect ratio sampling of the source video and a source image of 640 x 480 for 525-line standards and 768 x 576 for 625-line standards.
CCIR-601	<p>Use the CCIR-601 setting for 4:3 video that is viewed on a dedicated video monitor. This setting results in a CCIR-601 aspect ratio sampling of the source video. It results in a video input horizontal size of 720 pixels for both 525-line and 625-line standards. This sizing is standard for dedicated monitors but the resulting video appears horizontally stretched (525-line) or squeezed (625-line) on a computer monitor.</p> <p>It is more efficient to set the horizontal mode to match the size of the output. For example, if your target video size is 640 x 480, using Square Pixel sizing in PostProcessing Mode will avoid an unnecessary software scaling step in the driver.</p> <p>On some systems, for reasons external to this driver, 640 x 480 video renders on screen a lot faster than 720 x 480 video – that is, the speed difference is a lot more than the 9:8 ratio of numbers of pixels.</p>

<p>16:9 Wide</p>	<p>Select 16:9 Wide for 1.85:1 anamorphic video such as DVD content and any widescreen content. The output video size is 852 x 480 for 525-line standards, and 1024 x 576 for 625-line standards. To actually see output of this size, you have to also select this size in your application.</p>
<p>Use WideScreen Signal (WSS)</p>	<p>The Use WideScreen Signal (WSS) control enables automatic sidebars and letterboxing when the input video aspect ratio does not match the output aspect ratio. If the aspect ratio of your content is subject to change between 16:9 and 4:3, it is useful to enable this control.</p> <p>WSS is a line of the vertical blanking interval (VBI) that encodes the aspect ratio of the video. It is normally line 20 of 525-line video and line 22 of 625-line video. It is generated by newer DVD players, and is present in PAL broadcast content.</p> <p>The Use WideScreen Signal (WSS) control is useful for both 4:3 and 16:9 input formats, and for both 4:3 and 16:9 output formats. When selected, it has the following effects:</p> <ul style="list-style-type: none"> • 4:3 video on a 4:3 window shows without sidebars or letterboxing • 4:3 video on a 16:9 window shows with sidebars • 16:9 video on a 16:9 window shows without sidebars or letterboxing • 16:9 video on a 4:3 window shows with letterboxing

Horizontal Delay

Figure 27. Horizontal Delay



The Horizontal Delay control is for NTSC users. It has no effect for PAL and SECAM 625-line video standards.

485-line video is for specialized applications.

480-line video is for all normal applications. You can select which video lines should be the top line of displayed or captured video. For non-broadcast applications, all video lines starting with 21/284 can be part of the displayed video. In films and analog broadcast video, however, lines 21 and 284 are often used for Closed Caption. In broadcast video, lines 22 and 285 are sometimes used for proprietary ancillary data. If these lines are used for data they will appear as moving bands or streaks across the top lines. Therefore, the most generally useful start lines are 23/286.

Some broadcast video also uses additional top line pairs for ancillary data. We are seeing cases where the top line has to be set to lines 26/289 in order to hide all the data lines.

You can set start lines all the way up to 27/290. (On the PCI products which have a Direct Mode option, PostProcessing Mode must be set in order to have top lines below 23/286.)

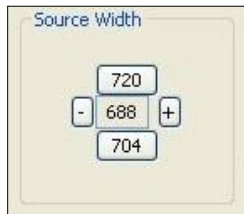
When the start lines are below 23/286, the bottom of the video frame spills off the bottom of the 485-line NTSC-standard frame. In this case, the driver adds black lines at the bottom of the frame.

Note: If you select start line 21/284, Closed Captions cannot be decoded.

Changes to this control take effect as soon as you click **Apply** or **OK**.

Source Width

Figure 28. Source Width



The Source Width control (Figure 28) works in conjunction with the Horizontal Delay control to adjust the width and borders of the active video field.

The Source Width control adjusts the width of the portion of the video line that is captured. Another way to understand it is that it moves the right edge of the video horizontally in the capture or preview frame. (This control does not move the left edge – the left edge is affected only by the Horizontal Delay control.) The minus button moves the right edge to the left, the plus button moves it to the right. Adjustments are relative to the standard CCIR horizontal size of 720 pixels. The [720] button resets the width to that default. The [704] button sets the width to a useful smaller size. The range of adjustment is from 688 to 720.

The recommended procedure is to perform this adjustment in conjunction with the Horizontal Delay adjustment, as follows:

1. Do the adjustment with a live preview stream running, so you can see changes immediately.
2. First use the Horizontal Delay adjustment to set the left edge of the video.
3. Then, use the Source Width adjustment to set the right edge of the video.

It is possible to obtain the same result using the cropping control (Size and Crop Tab) but there are some differences.

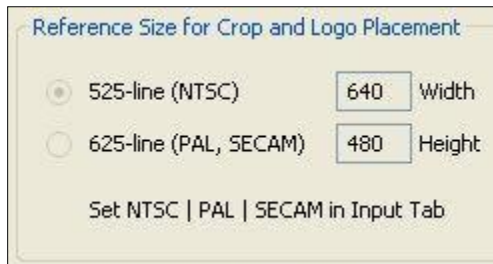
- The Source Width control affects all pins and all filters on the device, whereas the crop control must be set separately for all SimulStream filters.
- In Post-Processing Mode, this operation is often more efficient in terms of processing than a crop operation. The crop and scale are done in hardware, so if you are using the resultant 640 x 480 image directly without further cropping there is no scale/crop processing cost incurred.

The driver performs the source width adjustment in hardware if possible; otherwise it performs it in software. The following table summarizes the behavior of the control. The Adds CPU column refers to whether setting the control to a value other than 720 increases CPU usage beyond what is required by other aspects of the format.

Video Type	Format	HW or SW	Adds CPU	Granularity
525-line	Square pixels	HW	No	1
	CCIR	SW	Yes	4
	Widescreen	SW	No	4
625-line	Square pixels	SW	No	4
	CCIR	SW	Yes	4
	Widescreen	SW	No	4

Reference Size for Crop and Logo Placement

Figure 29. Reference Size for Crop and Logo Placement



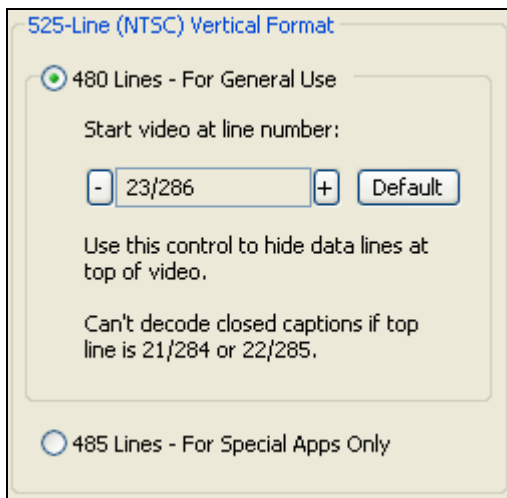
This part of the dialog is read-only because you do not set it directly – rather, it shows the results of settings made elsewhere in the dialog.

The settings shown by the 525-line / 625-line buttons reflects the video standard selected in the Input or Video Decoder tab (Figure 29). NTSC and PAL-M formats result in 525-line, 29.97 frame per second video. PAL (other than –M) and SECAM formats result in 625-line, 25 frames per second video.

The **Height** and **Width** fields show the size of the incoming video based on all the settings you have made. They reflect the video standard (NTSC, PAL, or SECAM) that you have selected on the Input Property Page, and the setting in the adjacent Horizontal Format group. They are updated when you click **Apply**.

525-Line (NTSC) Vertical Format

Figure 30. 525-Line (NTSC) Vertical Format



This control is only meaningful for NTSC users. It has no effect for PAL and SECAM 625-line video standards.

Select 480-line video for all normal applications. Select 485-line video for specialized applications.

When you select 480-line video, you can select which video lines should be the top line of displayed or captured video. For non-broadcast applications, all video lines starting with 21 / 284 can be part of the displayed video. In films and analog broadcast video, however, lines 21 and 284 are often used for Closed Caption. In broadcast video, lines 22 and 285 are sometimes used for proprietary ancillary data. If you use these lines for data they will appear as moving bands or streaks across the top lines. Therefore, the most generally useful start lines are 23 / 286.

Some broadcast video also uses additional top line pairs for ancillary data. We are seeing cases where the top line has to be set to lines 26 / 289 in order to hide all the data lines.

You can set start lines all the way up to 27 / 290. (On the PCI products which have a Direct Mode option, PostProcessing Mode must be set in order to have top lines below 23 / 286.)

When the start lines are below 23 / 286, the bottom of the video frame spills off the bottom of the 485-line NTSC-standard frame. In this case the driver adds black lines at the bottom of the frame.

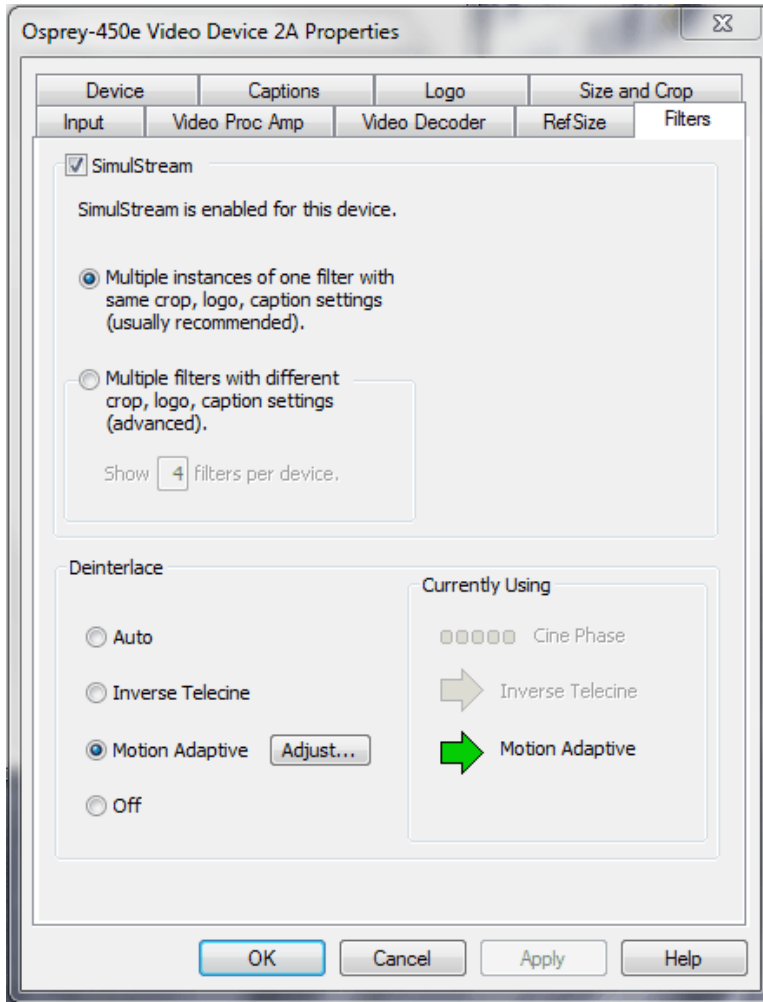
Note: If you select start line 21 / 284, Closed Captions cannot be decoded. On the Osprey-240e/450e, CC cannot be decoded if the start lines are 22 / 285 as well as 21 / 284.

Changes to this control take effect only when you stop and restart all video streams. You must stop all streams before you restart any.

Filters tab

The Filters tab (Figure 31) covers two independent technologies: SimulStream and deinterlacing. Functionality for both technologies exists on the Filters tab.

Figure 31. Filters tab



The RefSize tab has the following controls.

SimulStream	Enables SimulStream to output the same video in different sizes, color formats, frame rates, crops, logos, and captioning.
Deinterlace	Deinterlace settings are applied and stored per-device and are applied to all filters and pins associated with a device.
Currently Using	The read-only indicators allow you to see the current algorithm.
OK	Click OK to accept the settings.
Cancel	Click Cancel to reject the settings and close the window.
Apply	Click Apply to apply the settings.

Help	Click Help to access the user guide.
-------------	---------------------------------------------

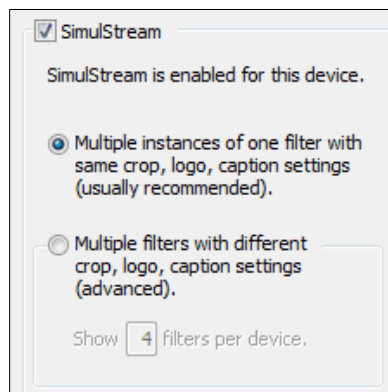
Filters have two interrelated purposes:

- They allow applications to enumerate and list DirectShow video capture and preview pins or streams (each with different settings) as named entries in their video device select list. You can set up the driver to show 1 to 10 filters per device. Each filter has one preview pin and one capture pin. Standard applications can access a particular filter without any custom programming specialized for Osprey devices.
- Each filter has independent settings for cropping, default output size, logos, and captions that can be stored between sessions. Compared to the previous pin-based method, there are no requirements for a particular startup order, in order to associate settings with instantiations.

SimulStream

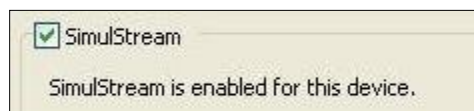
Use the SimulStream control to enable SimulStream or SimulStream evaluation mode, and to specify how many filters will be exposed.

Figure 32. SimulStream option



- Enable SimulStream in the evaluation mode, and specify how many filters you plan to expose.
- SimulStream is enabled for the currently selected device.

Figure 33. SimulStream enabled



SimulStream is a purchased software option. It makes a single hardware device appear as several separate devices capturing the same input stream. Each stream can have different size, color format, frame rate, crop, logo, and captioning. You can have multiple video capture streams in a single application, or multiple applications each with one or more capture streams.

The driver includes a free evaluation version. Evaluation mode works the same as licensed SimulStream except that an evaluation mode graphic is always displayed on the video.

For details about purchasing and installing SimulStream, refer to the ViewCast website.

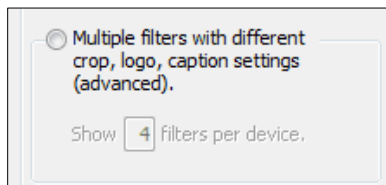
The check box at the top of the group turns on SimulStream for the currently selected device. The line of text below the check box will confirm whether a SimulStream license is installed on the system, whether SimulStream is enabled or disabled, and if enabled, whether it is enabled in licensed or evaluation mode.

SimulStream is enabled individually for each device. When you click **OK** or **Apply**, the driver will advise you to restart your application if this is needed.

You can use SimulStream as multiple filters or one filter.

Multiple instances

Figure 34. Multiple instances



You can have as many streams from the device as you want. They can have different sizes, color formats, and frame rates. The term *one filter* means all streams have the same Osprey custom properties. Specifically, cropping, logos (watermarks), and NTSC Closed Caption rendering settings work the same for all streams on the device when the Multiple Instances option is selected.

The advantage of this mode is that it is simpler. If you are not using osprey custom cropping, logos, or Closed Captions, or if all streams have the same settings, this mode is recommended.

This setting affects all devices served by the currently accessed driver. When you click **OK** or **Apply**, the driver may advise you to restart your application.

Multiple filters

Use this mode if you are using Osprey custom cropping, sizing, logos (watermarks), and NTSC Closed Caption rendering, and want each stream to have separate settings for these items.

The Multiple filters mode is more complicated than the one filter option—only use it if you are sure you need it.

Note: You do not have to use the Multiple Filters mode if the only things you want to be different on different streams are the video output size, color format, and/or frame rate. The application stores these settings, not the driver.

The term “multiple filters” refers to the method of saving and accessing these different settings. You can have 1 to 10 different filters, each holding different settings. The number of filters is determined by the edit box in the picture above Show [4] filters per device.

For example for the Osprey 240e, if you have 4 filters per device, each with separate crop, size, logo, and caption settings and the underlying device has the name Osprey 240 Video Device 1, when you open a

list of capture devices with SimulStream enabled, Osprey 240 Video Device 1.1, Osprey 240 Video Device 1.2, and ...1.3 and ...1.4 appear.

For the Osprey-450e, the corresponding designations would add an "A", "B", "C", or "D" to indicate the channel number on the board. Therefore, for "Osprey-450e Video Device 1A", when SimulStream is enabled, you will see "Osprey-450e Video Device 1A.1", "Osprey-450e Video Device 1A.2", and "...1A.3" and "...1A.4".

To set the custom properties for one of these filters, select it from the device list and open the driver properties dialog. The title at the top of the dialog confirms that you are setting up, for example, Osprey-450e Video Device 1A.2. When you set crop, logo, and caption settings, these will be saved separately for Device 1A.2 and will not affect Devices 1A.1, 1A.3, or 1A.4. Settings that are not per-filter – such as Reference Size or the Video Proc Amp settings – will affect all filters on the underlying Osprey-450e Video Device 1A.

To set the custom properties for one of these filters, select it from the device list and open the driver properties dialog. The title at the top of the window confirms you are setting up, for example, Osprey 240 Video Device 1.2. When you set crop, size, logo, and caption settings, they are saved separately for Device 1.2 and do not affect Devices 1.1, 1.3, or 1.4. Settings that are not per-filter – such as Reference Size or the Video Proc Amp settings – affect all filters on the underlying Osprey 240 Video Device 1.

Later, whenever you select one of the four filters as your capture filter, the Osprey custom crop, logo, and caption settings previously set for that filter is selected automatically.

This setting affects all devices served by the currently accessed driver. The driver prompts you to restart the system or your application if needed.

Deinterlace

Figure 35. Deinterlace settings



The deinterlace group has four radio buttons.

Auto	Apply inverse telecine deinterlacing to all telecine video. Apply motion adaptive deinterlacing to all video that is not telecine. Switch dynamically between the two modes as the content changes. Available for NTSC video only.
Inverse Telecine	Apply inverse telecine deinterlacing to all telecine video. Perform no deinterlacing of video that is not telecine. Available for NTSC video only.
Motion Adaptive	Apply motion adaptive deinterlacing to all video.
Adjust...	Click this button to display the Adaptive Deinterlace window (see <i>Adaptive Deinterlace window</i>).
Off	Perform no deinterlacing of any kind.

Deinterlace settings are applied and stored per-device and are applied to all filters and pins associated with a device.

Changes to this control take effect as soon as you click **Apply** or **OK**.

When to deinterlace

When in doubt, deinterlace. In some cases bad artifacts will be seen if you do not deinterlace.

- **NTSC (29.97 fps) users:** When in doubt, use Motion Adaptive deinterlacing rather than Inverse Telecine. Motion Adaptive deinterlacing is not ideal for all content, but it works at least adequately with all content. Inverse Telecine is ideal for telecine content – it completely removes interlacing artifacts – but for non-telecine content, Inverse Telecine is the same as no deinterlacing at all.
- **NTSC (29.97fps) users:** When the content is known to be 100 % telecine, it is best to use Inverse Telecine. Video sharpness will be superior (see *Background – telecine and inverse telecine*).
- **PAL / SECAM (25 fps) users:** When content is known to be 100 % progressive – that is, shot by a film, universal, or progressive camera, it is best to turn off deinterlacing. Video sharpness will be superior.

- **Vertical scaling:** When the driver scales video it treats both fields of the frame as a single progressive frame unit. The frame has to be deinterlaced or progressive. If it is not, and the video has motion, the result in scaled video will be large jagged patches on vertical or diagonal edges. If you see these effects, you need to turn on deinterlacing (see *Notes*).
- **Auto mode:** In Auto mode, when the driver detects telecine sequences, it applies the Inverse Telecine algorithm; otherwise it falls back to Adaptive Deinterlace. Auto mode is intended for content in which:
 - There may be both telecine and video segments
 - The telecine content is substantial and important, and needs to be of highest quality
 - Boundaries between telecine and video are not too frequent.
 The issue with this mode is that it takes the driver several frames to detect dropout of the telecine sequence, and fall back to Adaptive Deinterlace. These intervening frames will not be deinterlaced by either algorithm.
- **External deinterlacers:** Encoding and editing clients often offer their own deinterlace and inverse telecine filters. If you want to use these, turn the driver's deinterlacing off. *You can only do this action with video that exits the driver at exact 1:1 vertical scaling, relative to the raw capture format.* You can have the driver crop the video, but only if the exact 1:1 vertical scaling is preserved. The downstream deinterlacer will not be able to work with video that is scaled upstream of it (see *Notes*).

Background – telecine and inverse telecine

Telecine video is NTSC video that was originally created on film or by a digital universal camera, at 24 frames per second. In the telecine conversion process, certain fields are repeated in a regular, recurring sequence. If a telecined sequence is viewed directly on a progressive screen, interlacing artifacts are visible.

The inverse telecine process is the reverse of telecine; it drops the redundant fields and reassembles the video in a 24 fps progressive format. Interlacing artifacts are 100 % removed. If the video is viewed at 24 fps, you see the exact timing and sequencing that was on the original film. If the video is viewed at 30 fps, every 5th frame is repeated; however, there are no deinterlacing artifacts.

Telecine and inverse telecine only apply to NTSC video. They are not used for PAL and SECAM video. The **Auto** and **Inverse Telecine** buttons are disabled when you select PAL or SECAM as the video standard.

Background – motion adaptive deinterlace

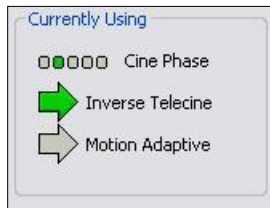
Motion adaptive deinterlace is an algorithm for deinterlacing pure video (non-telecine) content. All deinterlacing inherently causes some loss of detail in the affected areas. It is therefore desirable to detect which portions of the image are still, and which portions are in motion. Deinterlacing is applied only to regions where motion is detected, while full detail is preserved in still areas.

Currently Using group

These indicators allow you to see the current algorithm. These are *not* control buttons; they are read-only indicators. They are mainly useful in Auto Mode, to indicate which algorithm – Inverse Telecine or Motion Adaptive – is currently being applied. They are also useful in Inverse Telecine mode to show whether telecine content is present and the Inverse Telecine algorithm is being applied.

A green arrow (Figure 36) marks the mode currently in use. A dark grey arrow marks a mode that is possible under current control settings but not currently in use. A pale outline arrow marks a mode that is not available with the current control settings.

Figure 36. Current Using settings



With inverse telecine enabled, when telecine content is detected, the five Cine Phase dots show whether the 3:2 pulldown sequence is shifting. If it is shifting, the green marker shifts. This happens in mixed telecine/video content, and also in content that was converted to telecine and then post-edited in the video domain. Whenever a shift happens, a few frames are not deinterlaced. If these shifts are frequent, you may have to switch to Motion Adaptive deinterlacing for consistent quality.

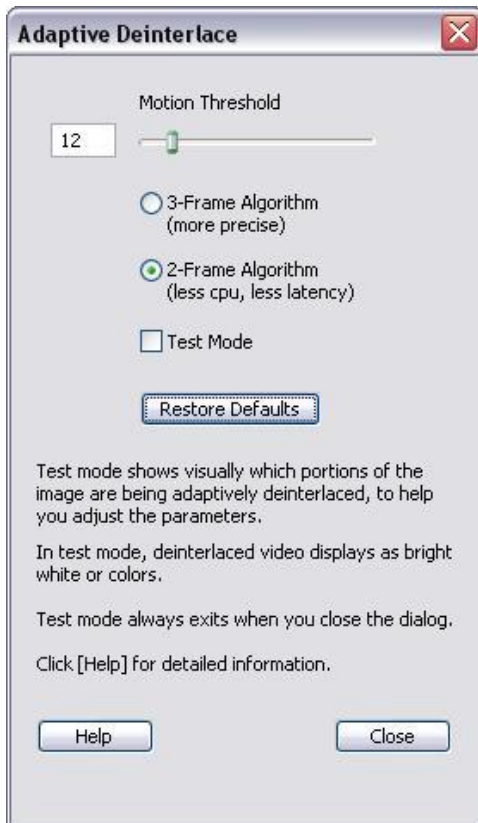
When the telecine detector locks the first time in a streaming session, the leftmost Cine Phase button is green. If the telecine sequence is perfectly coherent, the phase never shifts. Once it does shift, the absolute phase of the Cine Phase display (which of buttons 1 through 5 is green) is not significant – the only significant fact is that phase shifts are occurring. When the sequence relocks, all phase buttons are equally correct.

Adaptive Deinterlace window

Use the adjust dialog to adjust the parameters that control motion adaptive deinterlacing (Figure 37).

Note: When the driver is using the Inverse Telecine algorithm, either in Telecine mode or Auto mode, the Adjust settings have no effect at all, and Test Mode is inoperative.

Figure 37. Adaptive Deinterlace window



The Adaptive Deinterlace window has the following controls.

Motion Threshold	The Motion Threshold slider and edit box adjust the threshold of change of pixels that is judged to be motion. If you enter Test Mode and move the slider to the right, the number of pixels that are considered in motion is greatly reduced. As you move the slider to the left, the number of motion pixels greatly increases until nearly the entire screen is considered in motion. The recommended default is 12.
3-Frame Algorithm and 2-Frame Algorithm	The 3-frame algorithm detects areas of motion and synthesized adaptive pixels for those areas by looking at three frames of video – the current frame, the frame before it, and the frame after it. The 2-frame algorithm refers to just two frames. Both algorithms treat still areas (areas that are not green in Test Mode) the same way, and there should be no loss of detail in still areas. The tradeoffs are: <ul style="list-style-type: none"> • The 30frame algorithm results in slightly more accurate

	<p>deinterlacing but uses slightly more processing power.</p> <ul style="list-style-type: none"> The 3-frame algorithm adds one frame time of latency to video processing, whereas the 2-frame algorithm (when used in pure Motion Adaptive mode) does not (see <i>Effects on video latency</i>). <p>The 2-frame algorithm is the default because of the reduced latency, and because the quality difference is hard to see.</p> <p><i>Note: The choices for deinterlacing algorithms are revised for the 4.6.1 driver. The 2-frame algorithm is an enhancement of what was formally called the “smooth” algorithm. The 3-frame algorithm is new for this driver.</i></p>
Test Mode	<p>The Test Mode option causes the motion adaptive algorithm to enter a test mode that displays motion pixels as bright white or colored dots in place of the actual pixels of the image. The dots are mainly along edges that are in motion. If the motion threshold is set too low there may also be a random distribution of motion pixels caused by pixel jitter and instability of the video signal. If the motion threshold is set too high, there will be few or no altered pixels, and deinterlacing will be insufficient. Test mode is always automatically exited when you exit the Adjust dialog.</p>
Restore Defaults	<p>Click this button to restore the default settings.</p>
Help	<p>Click Help to access the user guide.</p>
Close	<p>Click Close to close the window.</p>

Effects on video latency

Note: Drivers prior to 4.6.1 always added one frame time of latency regardless of deinterlacing settings. The option for zero frames of latency is new to the 4.6.1 driver.

Some deinterlacing modes introduce one frame time of latency to the processing of captured video frames. That is, the processing adds 33 msec (525-line, NTSC), or 40 msec (625-line, PAL/SECAM) of delay to the time between end of frame capture, and return to the client. In all cases, this latency is in addition to the time for processing after capture – which is typically 1 to 5 msec. The one frame of latency is inserted or not inserted as follows:

- If deinterlace mode **Off**, there are zero frames of latency.
- If you request **Motion Adaptive** and select **2-Frame algorithm**, there are zero frames of latency.
- If you request **Motion Adaptive** and select **3-Frame algorithm**, there is one frame of latency.
- If you request **Inverse Telecine** or **Auto**, there is one frame of latency. In Auto mode, there is one frame of latency regardless of whether you select the **2-Frame** or **3-Frame** algorithm for Motion Adaptive fallback.

Most applications are not affected by video processing latency. For applications where it is important to reduce latency, the single most important step is to set deinterlacing mode to *Off* or to

Motion Adaptive – 2-frame. Once that is done, other factors to reduce processing time are the following:

- Set Deinterlacing to **Off** rather than **Motion Adaptive – 2 Frame** for absolute minimum processing time.
- Set gamma correction to the default, 100.
- For SECAM video, set the hue adjustment to the default, zero.
- For 525-line (NTSC) video, either:
 - Set Square Pixel (640 x 480) reference size, and capture full sized, 640 x 480 video
 - Set CCIR (720 x 480) reference size, set Source Width to 720, and capture full sized, 720 x 576 video
- For 625-line (PAL/SECAM) video, set CCIR (720 x 576) reference size, set Source Width to 720, and capture full sized, 720 x 576 video.
- Set the client application for YUY2 color format.
- Turn off logos and on-video caption rendering.

After you take these steps, latency will be 1 msec or less if the capture destination buffers are in system memory (they will be in system memory except in some direct-render-to-screen applications).

When you enable diagnostics, the latency is shown in a line of the form, latency per frame msec = 0.8554164, meaning that video frame delay from capture to return to client is 0.85 msec.

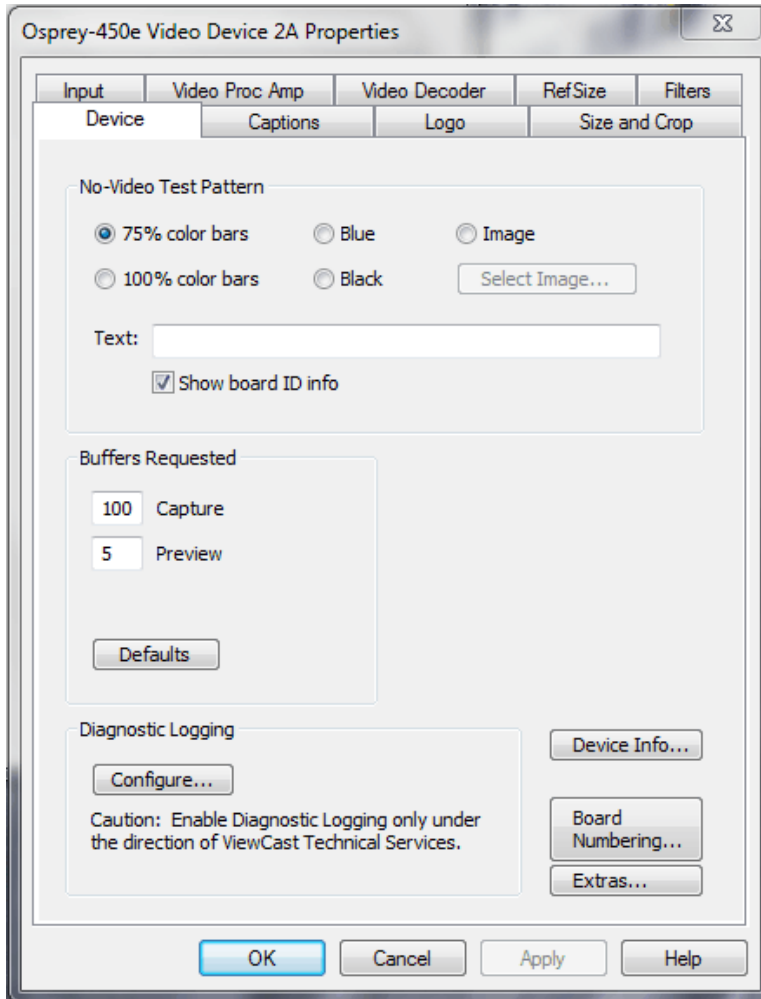
Notes

- When you select **Auto** mode, some kinds of content cause the driver to frequently switch between Inverse Telecine and Motion Adaptive processing. Content such as title sequences and commercials are often telecine, but cuts between scenes generally break the telecine sequence, forcing the driver to resynchronize. It takes it a number of frames to lock on to the new sequence. The driver drops back to the Motion Adaptive algorithm as soon as it becomes aware that telecine sync has been lost. However, it may take it several frames to discover that this has happened; these frames are not correctly deinterlaced.
- If the content is consistently telecine, that is pure movie content, then either Auto or Inverse Telecine is recommended for perfect recovery of the original progressive format.
- If the content is telecine with post-detelecine video-based editing, Auto mode results in the best overall quality – but several frames may not be deinterlaced every time the pull down phase sequence has to be relocked.
- If the content format is a rapidly changing mix of telecine and video, or is all video, or is of unknown type, the Motion Adaptive setting gives the most consistent results. The quality of telecine sequences is not the best possible, but there are no instances of frames not deinterlaced at all due to telecine re-locking.

Device tab

Device controls (Figure 38) are less often used items. Unless specifically noted, changes made on this page apply to all filters and all video previews and capture pins on the currently selected device. Unless noted, different settings may be set and stored for different devices.

Figure 38. Device tab



The Device tab has the following controls.

No-Video Test Pattern	This control lets you select a pattern to display when no video signal is present.
Buffers Requested	The driver indicates the minimum number of video capture buffers needed to allocate for proper operation.
Diagnostic Logging	For use by ViewCast Technical Support Only.
Extras ...	Click this button to display the Extras dialog box (see <i>Extras</i>).
Device Info ...	Click this button to display the Device Info dialog box (see <i>Device Info</i>).

OK	Click OK to accept the settings.
Cancel	Click Cancel to reject the settings and close the window.
Apply	Click Apply to apply the settings.
Help	Click Help to access the user guide.

No-Video Test Pattern

You can select one of four patterns to appear when no video signal is present – 75% color bars, 100% color bars, solid blue, and solid black. The 75 % color bars are calibrated to show correct luma and chroma test patterns on a vector scope. The calibrations are slightly different for NTSC, NTSC-J, and PAL/SECAM.

You can also display a PNG or 24-bit BMP image when no video signal is present. The image will be stretched or shrunk to fit the size of the full video reference frame. If you are cropping the video, the crop is applied to the no-video image as well as to the video. The **Select Image** button displays a standard Windows file select sub-dialog to select the image. It is customary for BMP files to have a filename extension .bmp and for PNG files to have the extension .png. However, the driver determines the file type by reading the file header.

You can place a text line on the test pattern. If the Text edit box is empty (no spaces and no text characters), then no text will appear. Otherwise, whatever you enter, up to 32 characters displays on the test pattern.

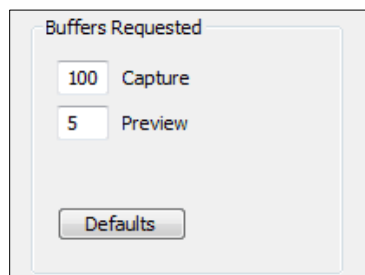
If you select Show board info, the text display includes the device name, the currently selected video input, the PCI Express bus and slot number, and the board serial number. This display is useful for determining which physical board in the system corresponds to each device name.

Click **Show board ID info** to display the board serial number.

Buffers Requested

The driver tells DirectShow the minimum number of video capture buffers it needs to have allocated for proper operation (Figure 39). The client application may ask for a different number of buffers; in general DirectShow honors the larger of the requests.

Figure 39. Number of Capture Buffers Requested



Buffers are used in a round-robin style. The driver fills a buffer; the client then consumes the buffer, and releases it when it is done. The buffer then circulates to the driver to be filled with video again. If the client holds on to a large number of buffers at once, there may be no empty buffers available to the driver and frames may be dropped. The solution is to allocate a larger number of buffers.

Capture and encoding applications generally need a large number of buffers so they can deeply pipeline the downstream processing without danger of buffer starvation at the driver. If buffer starvation is evident, in the form of dropped frames, you can try increasing the number of buffers allocated for the Capture pin.

Preview video that is directly rendered on the screen does not use deep pipelining and cannot benefit from it. There has been some evidence that too many buffers for direct rendering can harm performance.

In that case, on the Capture pin, increase the number of buffers from the default 100 for deeper pipelining and more resistance to dropped frames.

On the Capture pin, you can reduce the number of buffers to around 5 if the video is going to be used only for direct rendering. Remember to put the number back to 50 or more for capture or encoding, to avoid dropped frames.

On the Preview pin, you can increase the number of buffers to about 7 or 10 if preview video is jerky or irregular.

Click **Default** to return to the default settings.

Diagnostic logging

If you have a problem and contact ViewCast Support, they may request you provide a diagnostic log from the system that is showing the problem. This control group sets up logging.

The diagnostic facility is enhanced starting with driver version 4.6.1. Diagnostic logs can be written directly to a file you specify, as well as to the standard kernel driver debug stream. The direct to file option is usually more convenient.

When you click Configure, a dialog displays (Figure 40).

Figure 40. Diagnostic Logging



Log to File enables writing diagnostics directly to a file.

Select a directory and file name to complete the setup. For this purpose, **Select File** displays a standard Windows file select sub-dialog. If you do not select a file, the default will be c:\diag240-1.log. If you select a file that already exists, that file will be appended to.

You can specify the maximum size that this file is allowed to grow to. The number in the dialog is this size in megabytes. The allowed range is 1 MB to 1000 MB (1 GB). If the file grows to the size you have specified, data already written is retained, but no new data will be written.

Log to DebugView lets you write diagnostics to the standard kernel driver debug stream, which can be captured and displayed by utilities such as DebugView. DebugView is a Microsoft utility that can be downloaded from MSDN – search there for DebugView download. Direct-to-file logging is usually easier, so you will probably not need this option.

The data collected includes the stream configuration of each Osprey 240e/450e audio and video stream, each stream's statistics at the end of the run, and all run state changes of all streams (see Figure 41).

Figure 41. Typical section of data

```

v- =====
v- 2011/12/16 16:00:53.661: 0240 video channel 1 filter 1 capture pin 1: pause->run    video cap,pre running = 1,0
v- =====
v- v- 2011/12/16 16:00:57.688: 0240 video channel 1 filter 1 capture pin 1:
v-
v- device level configuration:
v- OS = W7 64-bit
v- driver version = 4.5.1.42 board type = 48 (30h)
v- input line: type = composite instance = 0
v- video standard = NTSC-M
v- reference size: mode = square pixel process wss = no
v- ntsc lines: top = 23 number of lines = 480
v- simulstream: disabled, licensed mode, number of filters = 1
v- deinterlace mode = adaptive
v- proc amp:
v- brightness = 95 contrast = 97
v- saturation = 107 hue = 0
v- gamma = 86 sharpness = 3
v- registry settings:
v- driver 'Config' dword = 084A4000h
v- device 'Config' dword = 01000F40h
v-
v- pin level configuration:
v- color format = yuy2
v- output height = 240 width = 320 stride = 320
v- crop top = 0 bottom = 480 left = 0 right = 640
v- frame rate requested = 29.97 (interval 10M = 333667)
v- frame rate used      = 29.97 (interval 10M = 333667)
v- 24 fps locked = no
v- number of buffers requested = 100
v-
v- pin level stats:
v- client buffer type      = fast
v- clock type             = avstream
v- presentation time adjust = on
v-
v- duration of capture session 10M = 39025074
v- actual minus expected duration 10M = -13965
v- actual frame rate          fps = 29.9807
v- actual frame interval      msec = 33.3547641
v- avg cpu per frame          msec = 2.6084060
v-
v- frame count             current = 117 cumulative = 117
v- drop count              current = 0 cumulative = 0
v- no video signal         current = 0 cumulative = 0
v- client no buffers       current = 0 cumulative = 0
v- audio restarts          current = 0 cumulative = 0
v- processing overruns     current = 0 cumulative = 0
v-
v- device level stats:
v- number of dmas = 117
v- dma interval, average 10M = 333617.119
v- =====
v- 2011/12/16 16:00:57.688: 0240 video channel 1 filter 1 capture pin 1: run->pause    video cap,pre running = 0,0
v- 2011/12/16 16:00:57.686: 0240 video channel 1 filter 1 capture pin 1: pause->acquire
v- 2011/12/16 16:00:57.686: 0240 video channel 1 filter 1 capture pin 1: acquire->stop

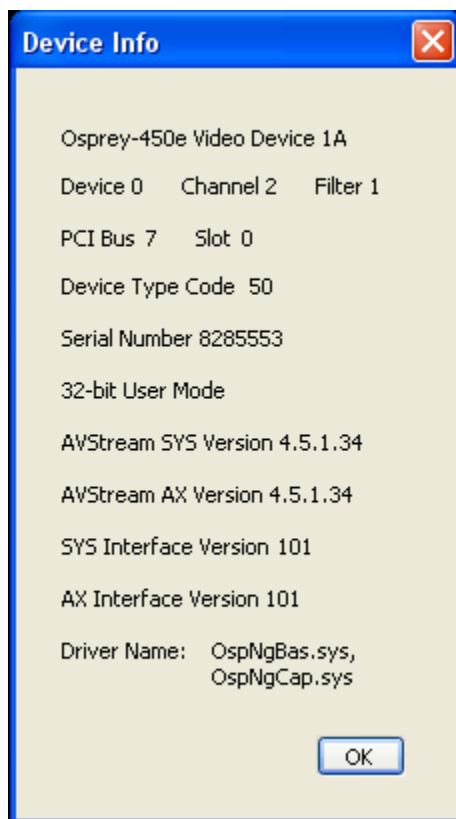
```

ViewCast normally assists interpretation of diagnostic logs only in reference to specific issues raised with ViewCast Support. The meaning of many of the log entries will be evident to an experienced user, though.

This control is global to all osprey 240e/450e audio and video devices and streams.

Device Info

Figure 42. Device Info

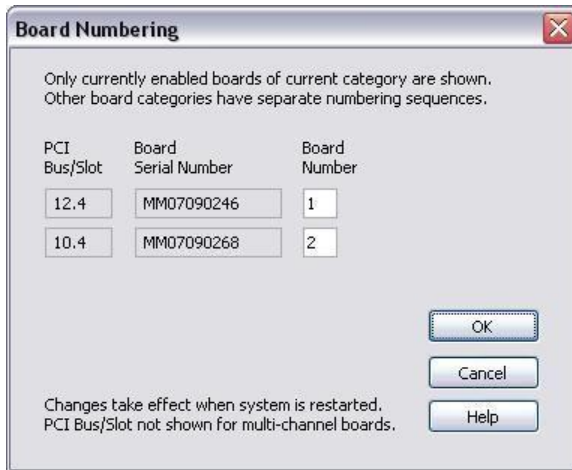


The Device Info window displays useful information about the capture card and the driver, including the DirectShow name of the device (Figure 42). Click **OK** to close the window.

Board Numbering

When you first set up a system with multiple Osprey boards, the device numbers reflect the order in which the system identified and initialized the boards. The driver associates each device number with the PCI address of the board to which it is initially assigned, and saves that information. Each time you restart the system the same association is preserved. However, you may not want this initial ordering. For example, in a system with four boards you may want the board ordered 1-2-3-4 from left to right or top to bottom of the chassis.

When you click **Board Numbering** on the Device property page opens a dialog for renumbering the boards (see Figure 43).

Figure 43. Board Numbering

Each line represents the information for one Osprey board. Only boards that are currently installed and enabled are shown. Also, only boards of one type at a time are shown. For example, consider a system with two Osprey-240e and two Osprey-450e boards. The two board types are numbered separately -- there is a board 1 and a board 2 of each kind. Which listing is shown depends on the context in which you open the property pages. If you open them from an Osprey-240e context, you will see the two Osprey-240e boards. If you open them from an Osprey-450e context, you will see the two Osprey-450e boards.

The information for each board includes the PCI bus and device address on the left, the serial number in the middle, and the current device number on the right. For boards such as the Osprey-450e which span multiple PCI addresses, the PCI Bus/Slot information is not shown.

The device numbers are editable. You can assign each board any number from 1 to 8. All boards in the current list must have different numbers. The numbers do not have to be in a packed sequence 1, 2, 3...

The easiest way to identify boards is to start all boards streaming, and remove the video sources so that test patterns are shown (see Figure 44).

Figure 44. Test patterns

To set up the test patterns, enable the board ID information display by selecting **Show board ID info** on the Device property tab. The information shown includes the PCI bus and slot for the board, and the board's serial number, in the same format as the Board Numbering dialog.

When you have set the new board numbers and want to save them, click **OK**. The dialog will warn you if the numbers are not in the allowed range 1..64, or if there are duplicates – you must correct these

issues before saving the numbers and exiting. However, you can exit by clicking **Cancel** at any time, and your changes will be discarded.

The new numbering takes effect when you restart the system.

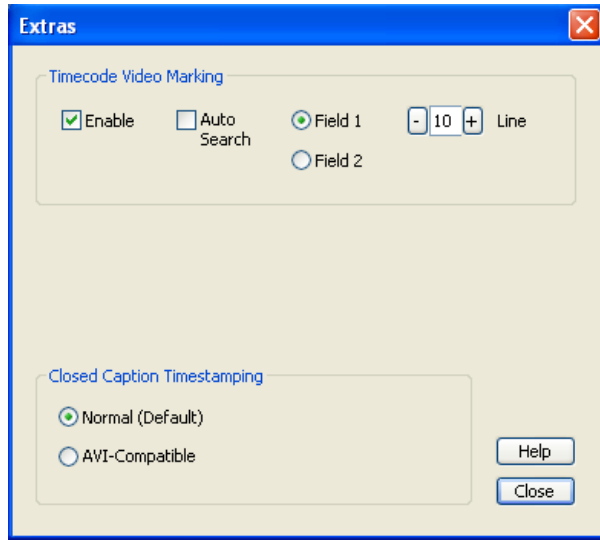
Notes

- Board settings, especially video custom properties such as Crop, Logo, and Captions settings, are linked to board PCI addresses rather than to board numbers.
- After you renumber boards, you may have to re-set your volume levels. On Microsoft Windows XP platforms, you may also have to re-select your audio inputs.
- When you add a new board, especially a board with complex PCIe topology such as an Osprey 450e, the PCI addresses of boards already in the system may be altered. This change may cause the driver to renumber boards that were already in the system. Use the Board Numbering dialog to set numbers the way you want them. You may have to manually adjust board settings such as video custom properties when boards are added or removed.

Extras

Extras (Figure 45) are features of the AVStream driver that are new, not fully defined, or subject to change. Extras may also include workarounds to unresolved issues that may be resolved at a future time. Extras should be expected to change more frequently than other aspects of the driver, and may not be shown for all versions of the drivers.

Figure 45. Extras



Extras should be expected to change more frequently than other aspects of the driver.

Timecode Video Marking	Refer to the <i>Vertical Interval Timecode (VITC)</i> section of this guide for more information.
Closed Caption Timestamping	This control is a workaround to an apparent problem in DirectShow with capture of CC to AVI files. As a practical matter, always use the Normal setting.
Help	Click Help to access the user guide.
Close	Click Close to close the window.

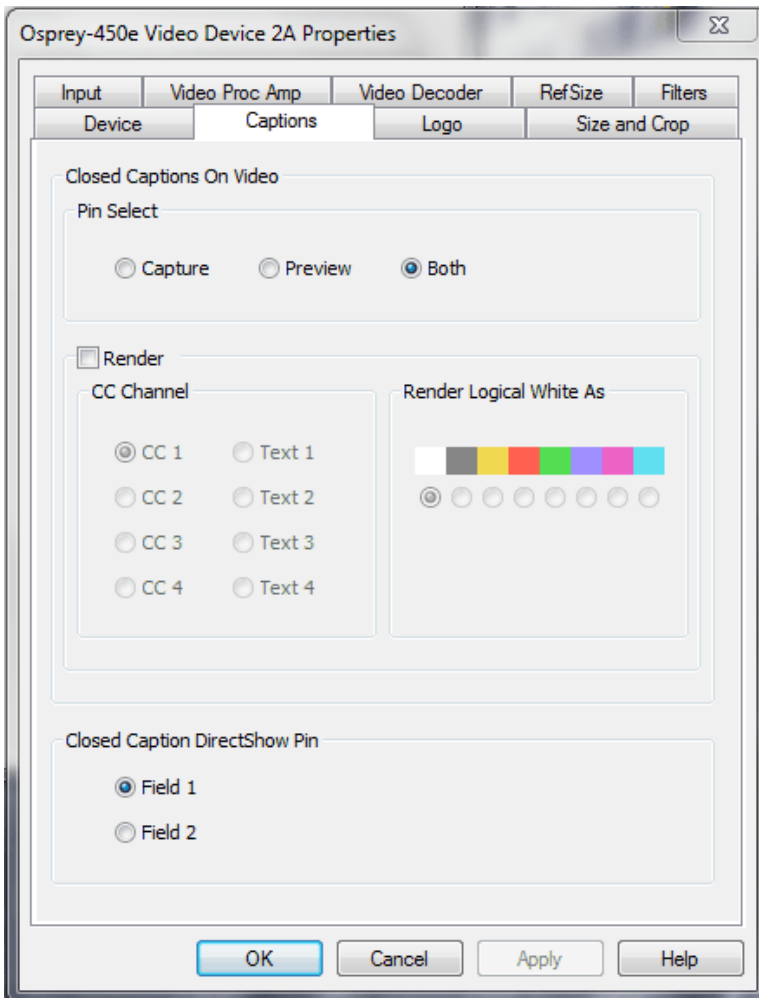
Captions tab

The Osprey 240e/450e driver has four ways of delivering NTSC Closed Caption (CC) data:

- It can render captions directly on to the video before it leaves the driver.
- It can send decoded caption data to a DirectShow-compliant CC pin.
- It can send the raw, undecoded Line 21 caption waveform to a DirectShow-compliant VBI pin.
- It can deliver decoded caption data to a proprietary interface that can be used by C++ developers.

The controls on the Captions tab (Figure 46) pertain mostly to item 1, Closed Captions on Video. There is one control that affects item 2, Closed Caption DirectShow pin.

Figure 46. Captions tab



The Captions tab has the following controls.

Pin Select	The drop-down list has three choices: <ul style="list-style-type: none"> • Capture • Preview • Both
Render NTSC Closed Captions On Video	The driver can render closed captions on video when NTSC video is selected on the input.
Render Logical White as	This control group maps white captions to a color other than white.
CC Pin	This group controls whether the closed caption character pairs emitted by the DirectShow CC pin are from Field 1 or Field 2 of the video.
OK	Click OK to accept the settings.
Cancel	Click Cancel to reject the settings and close the window.
Apply	Click Apply to apply the settings.
Help	Click Help to access the user guide.

Pin Select

You can have different setups for the two pins. For example, you could enable cropping on the capture pin but not on the preview pin.

Capture	When you click Capture , the current captioning settings for the capture pin are loaded, and changes you make apply only to the capture pin, not to the preview pin.
Preview	The Preview button works analogously.
Both	When you click Both , changes you make to the captioning setup apply to both the capture and preview pins. This setting is the default.

Render NTSC Closed Captions On Video

Figure 47. Render NTSC Closed Caption On Video



When you select Render NTSC Closed Captions On Video (Figure 47), the CC Channel control selects which channel to render. The details of Closed Caption channels are beyond the scope of this description – refer to the EIA-608 standards document. But CC 1 is by far the most commonly used channel. Select CC 1 unless you have specific knowledge that you want to render another channel.

Render Logical White As

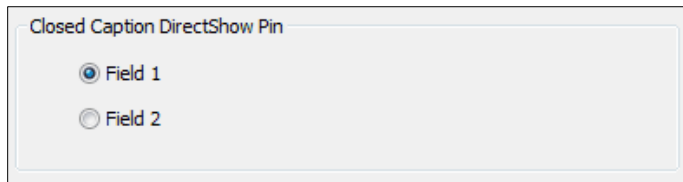
The control group **Render Logical White As** (Figure 48) maps white captions to a color other than white. Nearly all captioning content uses only the default color white. This feature is a proprietary extension to the Closed Captioning standard. This control causes white captions to appear in the selected color. Captions in other colors are not affected.

Figure 48. Render Logical White As



CC Pin

Figure 49. CC Pin



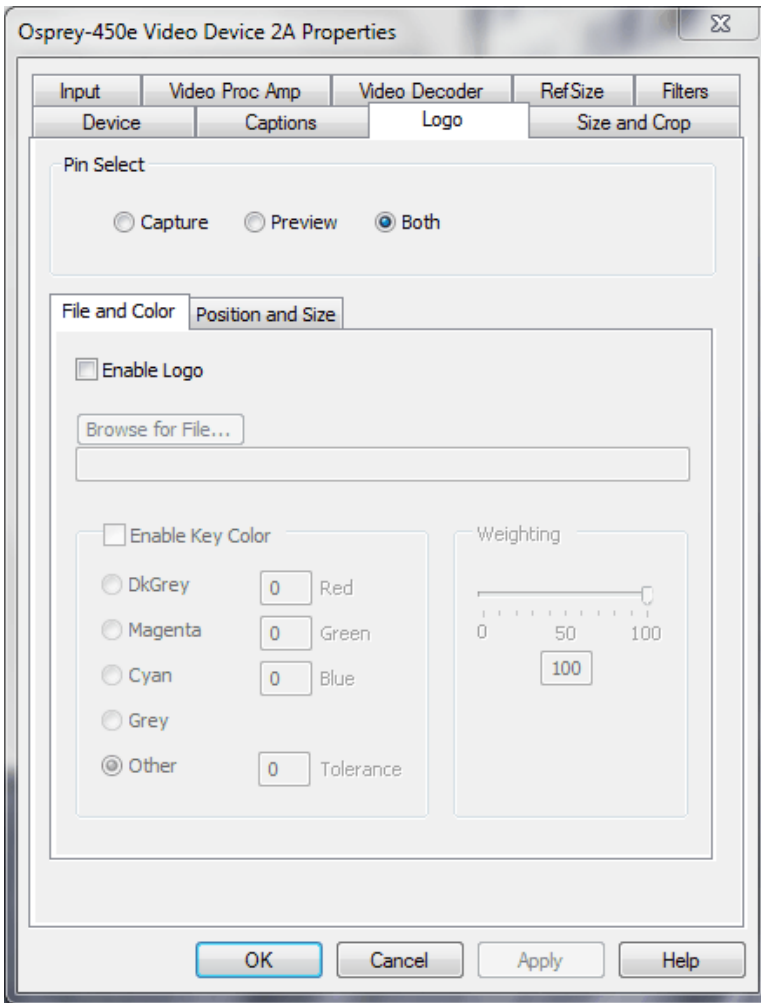
This group controls whether the closed-caption character pairs the DirectShow CC pin emits are from **Field 1** or **Field 2** of the video. The DirectShow specification is that CC on a CC pin is always from Field 1; however, this extension allows application developers to access Field 2 data including XDS data (such as V-chip data) via the standard DirectShow CC pin.

For most purposes, including scripting in applications such as Windows Media, you will want to select Field 1. Field 2 is mostly for custom applications.

A video capture filter's CC Pin is separate and independent from the video capture and preview pins, as well as from the driver's rendering on video function.

Logo tab

Figure 50. Logo tab



The Logo tab has the following controls.

Pin Select	The drop-down list has three choices: <ul style="list-style-type: none"> • Capture • Preview • Both
Enable Logo on File and Color sub tab	From this control, enable or disable the logo.
Enable Key Color on File and Color sub tab	Control the key color and efficiency effect.

Weighting on File and Color sub tab	Set the degree of transparency of the logo.
Position and Size sub tab	Set the position of the logo and the scale.
OK	Click OK to accept the settings.
Cancel	Click Cancel to reject the settings and close the window.
Apply	Click Apply to apply the settings.
Help	Click Help to access the user guide.

The logo property superimposes a graphic over captured video using the logo property controls (Figure 50).

Logos have the following characteristics:

- Use any RGB-24 BMP file format.
- Use any PNG file.
- For BMP files and PNG files without alpha (transparency) data, specify a selectable key color; all parts of the logo graphic with that color are not drawn on the video.
- Use a transparency control to blend the logo graphic with the background video. Use this control in combination with the alpha data in a PNG file.
- Interactively position and scale the logo.
- The logo can appear on either or both captured and previewed video.
- The capture and preview streams can have the same or different logos. The settings (keycolor, transparency, size, and position) of the two logos can be independent or linked. If the video sizes of the two streams are different, you will usually want to set the size and position differently for each logo.

The logo property controls work best when you are already running video that you can directly view, so you can view your changes interactively.

The logo property is organized as two sub-pages: **File and Color** and **Position and Size**.

Pin Select

You can have different setups for the two pins. For example, you could enable the logo on the capture pin but not on the preview pin, and thereby save some CPU time.

Figure 51. Pin Select



Capture	When you click Capture , the current logo settings for the capture pin are loaded, and changes you make apply only to the capture pin, not to the preview pin.
Preview	The Preview button works analogously.
Both	When you click Both , changes you make to the logo setup apply to both the capture and preview pins.

File and Color

Figure 52. File and Color



The **Enable Logo** check box, which is repeated on both sub-tabs, enables or disables logos. If you disable logos, all your other logo settings are retained for when you re-enable logos.

In Figure 52, **Browse for File** opens a standard file select dialog. Logo files must be:

- In BMP 24-bit format
- In PNG format (all commonly used PNG formats are accepted)

If you have a graphic in another format, edit it with a drawing or photo edit program such as Windows Paint, and save it as a PNG file. The PNG format is recommended instead of the BMP format because it is both compressed and lossless – so the image file is smaller, but with no sacrifice of quality. Also, if you use a suitable image editor, you can create transparency effects that are not possible with the BMP format.

It is customary for BMP files to have a filename extension .bmp and PNG files to have the extension .png. However the driver determines the file type by reading the file header.

Enable Key Color

Figure 53. Enable Key Color



You can control the key color and the transparency effect. If video is running, you see your changes interactively.

You can use these controls with both BMP and PNG images. You can use key colors with PNG images that contain embedded alpha channels, but alpha keying is superior solution. If your image editor supports alpha keying, use alpha keying and leave the key color controls disabled.

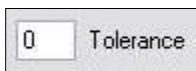
The key color disappears from the graphic so the underlying video shows through unchanged.

If you *clear* **Enable Key Color**, all colors display.

If you select **Enable Key Color**, key coloring is activated. The five radio buttons are activated. You can select one of four standard colors – dark gray, medium gray, cyan, or magenta – or a custom color. If you select **Other** for a custom color, the three edit boxes – Red, Green, and Blue – are activated, and you can enter any color value in the range 0..255 into these boxes.

Key colors to identify transparent portions of logos can be exact or inexact. The Tolerance control (Figure 54) determines this. If Tolerance is 0, then all key colors have to exactly match the Red / Green / Blue values shown in the key color control group. If Tolerance is nonzero, then the Red / Green / Blue values can deviate from the key color by the tolerance value and still be treated as being equal to the key color. For example, if Tolerance is set to 5, and the key color is set to grey (192, 192, and 192), then pixels in the bitmap with value (187, 187, and 187) are also transparent.

Figure 54. Tolerance control



Weighting

The degree of weighting of the logo is variable through 100 steps. If the setting is 100, the logo will be 100% opaque. If the setting is 0, the logo is completely transparent and invisible. If you have set a key color, the weighting or transparency value is applied only to pixels that do not match the key color; key colored pixels are always completely transparent. You can set the weighting either with the slider or by editing the number in the edit box (Figure 55).

For PNG images with embedded alpha data, the weighting control is combined with the alpha data. For example, if a pixel is weighted 50% according to the alpha data, and the weighting control is also set to 50%, the pixel will display as 25% opaque.

Figure 55. Weighting

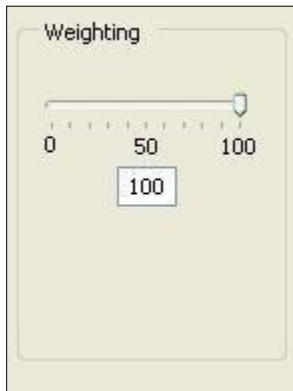
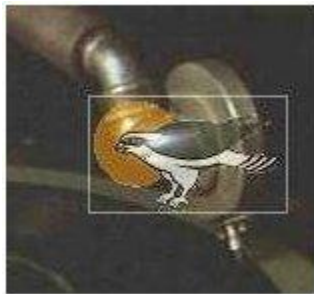


Figure 56. Logo position



Position and Size

The Logo Position sub-tab lets you position and scale the logo. It is strongly recommended that you have video running when you use these controls, so you can see results interactively.

The large green rectangular at the top of this sub-tab represents the video area where the logo can be positioned. The smaller red rectangle represents the logo. To position the logo, click on the logo rectangle and drag it to the new position.

If logos are enabled but the red rectangle is not visible, the driver could not find the logo file, or it was in a format other than PNG or 24-bit BMP. Go back to the File and Color page and correct this first.

The four Nudge buttons, L, R, U, and D, move the logo left, right, up, or down exactly one pixel at a time on the output video. Since the positioning rectangle may be scaled down from the full video size, the Nudge buttons allow more accurate positioning of the logo.

The slide control at the bottom right of this sub-tab controls the scaling of the logo. **1X Scale** returns the size to the original size of the .bmp graphic.

If your capture and preview streams have different video size, you will need to view both streams and set the size and position separately for each.

Notes

- Because you use the Logo tab to set up a logo interactively on live video, its behavior is different from the behavior of the other tabs. The driver updates the controls on the Logo tab immediately, without waiting for you to click **Apply**. After you select a different pin spec, **Apply** is enabled. As soon as you make any change to any logo control, **Apply** becomes disabled and stays that way until you change to another pin spec.
- If you set up a logo with video set to one size, then resize the video, the logo does not scale correspondingly. This may not be desirable, since you may want the logo to expand to the same scale as the video window. Click **1X Scale** to restore the logo to its unscaled size or import a logo prescaled to the new desired size to ensure the best image quality.

Size and Crop tab

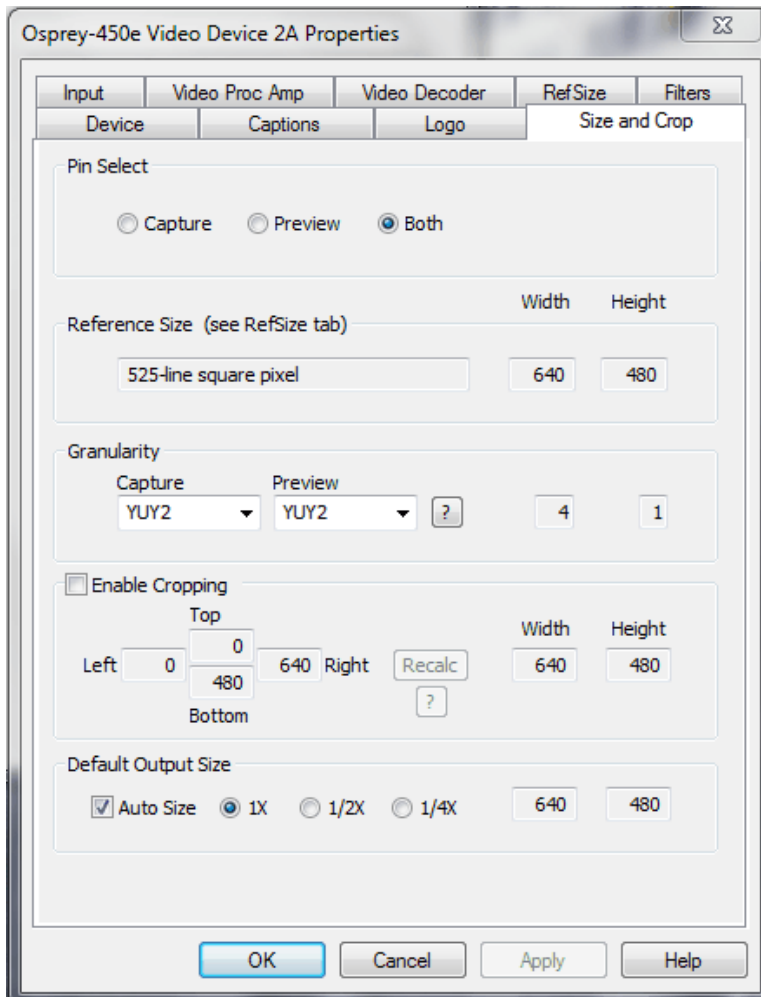
This tab (Figure 57) has two functions. It sets the default output size, whether or not you enable cropping. It enables and disables cropping, and sets the cropping area.

The default output size is the video size that appears in the DirectShow pin properties dialog as the default choice. It is a pathway for setting a custom or nonstandard video size in applications that do not have a custom video sizing controls built into them.

Cropping means removal of unwanted video around the edges of the incoming image. For example, if the incoming video is letterboxed, with an aspect ratio wider than 4:3, you can crop the black slivers at the top and bottom of the image and capture just the active portion.

Changes made on this page apply to all video preview and capture pins on the currently selected device.

Figure 57. Size and Crop tab



The Size and Crop tab has the following controls.

Pin Select	This field has three choices: <ul style="list-style-type: none"> • Capture • Preview • Both
Reference Size	Displays the full uncropped size of the incoming video. This read-only information is determined by settings made on the Input tab and the RefSize tab.
Granularity	This control helps you choose crop and output sizes that observe those restrictions
Enable Cropping	When enabled, your video is cropped to the indicated boundaries. When disabled, your video is not cropped regardless of any crop settings you may have made previously.
Default Output Size	Select the height and width of captured video.
OK	Click OK to accept the settings.
Cancel	Click Cancel to reject the settings and close the window.
Apply	Click Apply to apply the settings.
Help	Click Help to access the user guide.

The default output size is the video size that appears in the DirectShow pin properties dialog as the default choice. It is a pathway for setting a custom or nonstandard video size in applications that do not have custom video sizing controls built into them.

Pin Select

You can have different setups for the two pins. For example, you could enable cropping on the capture pin but not on the preview pin.

Capture	When you click Capture , the current crop settings for the capture pin are loaded, and changes you make apply only to the capture pin, not to the preview pin.
Preview	The Preview button works analogously.
Both	When you click Both , changes you make to the crop setup apply to both the capture and preview pins. This setting is the default.

Reference Size

The reference size information is always read-only on this dialog tab. The reference size is determined by settings made on other tabs – specifically, the Input tab, where you select a 525-line or 625-line standard, and the RefSize tab, where you select Square Pixel or CCIR proportioning. The read-only text box describes which of these options is currently governing the reference size.

The reference width and height represent the full uncropped size of the incoming video. Your crop settings are interpreted relative to this reference size. For example, if you are capturing 525-line video, with a reference size of 640 x 480, and your crop rectangle is (0, 0, 640, 480), then your video is effectively uncropped. But if you are capturing 625-line video, with a reference size of 768 x 576, the same (0, 0, 640, 480) crop specification truncate the right and bottom edges of the video.

Granularity

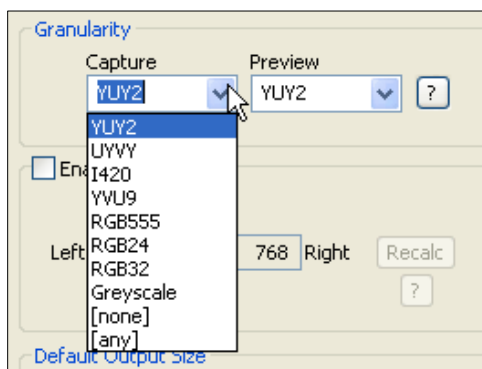
Most video data capture formats impose restrictions on the possible width and/or height of the video, referred to as granularity restrictions. For example, the I420 capture format requires that the capture width be a multiple of 4 and the capture height be a multiple of 2.

The granularities for the various color formats are as follows:

Format	Horizontal	Vertical
RGB32	4	1
RGB24	4	1
RGB555	4	1
Greyscale	4	1
YUY2	4	1
UYVY	4	1
I420	4	2
YVU9	4	4
[none]	4	1
[any]	4	4

The Granularity controls show the granularity restrictions for the selected video format, and assist you in choosing crop and output sizes that observe those restrictions.

Figure 58. Capture drop-down list



Because you can set the preview and capture pins to different color formats, they can have different granularities. When you open the Size and Crop tab, the Capture and Preview fields are initialized to the current or most recently used format for the selected pin (Figure 58).

If your Pin Select setting is **Capture**, only the Capture granularity box is enabled; similarly for Preview. The two small read-only edit boxes to the right of the group show the horizontal and vertical granularities for the selected color format for the selected pin type.

If your Pin Select setting is **Both**, both the Capture and Preview fields are enabled, and the two fields to the right of the group show the worst-case granularity that works for both the Capture and Preview color formats. For example, if the Capture color format is I420 and the Preview color format is YUY2, the resultant granularity is I420's more stringent 16 x 2 requirement.

The granularity settings affect values you subsequently enter for crop width, crop height, and default output width and height – they are adjusted to these granularities. Adjustments are made when you click on another control.

You can change the video format in the drop-down list, so that granularities are set for a different format.

Note: This action does not automatically cause the pin to have this format – you still have to select that format using the Pin Properties window or via your application. It just ensures the sizes you select work correctly when you do select this color format in the application.

If you set up your crops with a less restrictive granularity (for example, YUY2) and then capture with a more restricted granularity (for example, I420), the driver may automatically adjust the video crop and/or output size without notifying you. Or, the capture may fail. You may also find that in the Pin Properties window the default size you wanted is not listed – because it is not a legal size for this format.

If you select **[none]** as the color format, no granularity adjustments are applied to your crop and size data. In practice, **[none]** is the same as the packed RGB and YUV modes.

If you select **[any]** as the video format, the coarsest granularity required by any of the available formats is applied to your crop and size data. In practice, **[any]** is the same as YVU9, that is, 16 x 4. You are guaranteed your crop and output sizes will never be adjusted, regardless of what video format you select now or in the future.

There is also a restriction on horizontal placement of a cropping window – the placement must be on an even pixel boundary, 0, 2, 4, ...

Enable Cropping

If you clear **Enable Cropping**, your video is not cropped regardless of any crop settings you may previously have made. The edit boxes showing the edges, height, and width of your crop is read-only and shows settings for full-frame, uncropped video.

Figure 59. Enable Cropping

The screenshot shows a dialog box titled "Enable Cropping". At the top left, there is a checked checkbox labeled "Enable Cropping". Below it, there are four input fields for crop boundaries: "Top" (120), "Bottom" (360), "Left" (60), and "Right" (580). To the right of these are "Width" (520) and "Height" (240) fields. A "Recalc" button is located between the "Right" and "Width" fields, and a "?" button is below it.

If you select **Enable Cropping**, your video is cropped to the indicated boundaries. The edit-boxes are initially set for the full uncropped video frame. The **Top** and **Left** boxes set the top left corner of the

cropping rectangle. The **Right** and **Bottom** boxes set the bottom right. The Width and Height boxes set the size of the rectangle.

Recalc button

The **Recalc** button recalculates whichever of the six crop edit boxes you have not filled in. For example, if you set **Top**, **Left**, **Width**, and **Height**, **Recalc** calculates **Right** and **Bottom**. If you set **Top**, **Left**, **Right**, and **Bottom**, **Recalc** calculates **Width** and **Height**. Whichever of the vertical group was least recently touched, is the item that is recalculated; similarly with the horizontal group. If you only changed one box of the group, you can force the order of recalculation by clicking one of the other two boxes. For example: If you have changed **Left**, and you want to preserve **Width** (but alter **Right**), then click on **Width** before **Recalc**. If you have changed **Left**, and want to preserve **Right** (but alter **Width**), then click on **Right** before **Recalc**.

If your specification results in a crop rectangle that is too large or too small, **Recalc** adjusts it appropriately. If **Recalc** can't set up an allowed size by changing just the third most recently clicked setting, then it tries to change the second most recently clicked setting instead or as well. If it has to, it changes your most recently changed setting.

Recalc also factors in granularity and positioning requirements as required. The left edge, height, or width value of a crop rectangle may be lowered to the next smaller granularity threshold. This is the likely reason why small adjustments may not take after **Recalc** – they are rounded down, so nothing changes. You have to use a value that is larger than the next granularity threshold. See *Granularity* for the values of the granularity parameters.

In the **Default Output Size** group, **Recalc** changes the default output size if you enable **Auto Size**. If you do not select **Auto Size**, **Recalc** leaves the output size alone.

Note

- The crop width and height are subject to the granularity requirements of the selected video format, as explained in the previous section. For example, if your video format is I420 and you try to set a crop width of 360, it gets adjusted down to 352.
- If you enable cropping, enter in some custom settings and then disable cropping, an uncropped specification displays and your settings disappear from view. However, the driver remembers your custom settings, and if you enable cropping again, they reappear.
- The driver can upscale cropped video, up to the reference size.
- Cropping rectangles are frame-based rather than field-based. Thus if a crop rectangle is set up defining a 320 x 240 area, then a capture of video sized at 320 x 240 results in video being captured from two fields. You may therefore see interlacing artifacts in the captured video, unless a deinterlacing filter is applied. This may be initially confusing since most users typically think of 320 x 240 video captures only coming from a single field and thus would not have interlaced artifacts. However, in this case, the source video is only 320 x 240 in size (i.e. the crop rectangle) and thus any captured video that is greater than the field height within the crop rectangle (equal to ½ cropped ROI height) results in a scaled capture of multiple fields. Also, the driver uses both fields whenever they are needed to interpolatively scale the output with best possible accuracy.

Default Output Size

Figure 60. Default Output Size



The standard DirectShow Pin Properties dialog allows you to select the height and width of captured video (Figure 60) from a drop-down list. The drop-down list has a particular range of choices that may or may not fit your needs. The drop-down list includes one default size that may or may not fit your needs. The drop-down list includes one default size that is provided by the capture driver. The Default size control allows you to set up what default size will be shown.

If you click **Auto Size**, your default video size is sized automatically to your crop settings. The three radio buttons, **1X**, **1/2X**, and **1/4X**, determine whether the output size is scaled down from the crop size.

Example 1: If you are running standard 640 x 480 NTSC video, and you do not enable **Enable Cropping**, your crop size is 640 x 480. With **Auto Size** enabled, and **1X** selected, your default size is 640 x 480; with **1/2X**, 320 x 240; and with **1/4X**, 160 x 120.

Example 2: If you have enabled cropping with size 320 x 240 (one quarter of the full video area), the default Auto Sizes are as follows: **1X**, 320 x 240; **1/2X**, 160 x 120; **1/4X**, 80 x 60.

If you leave **Auto Size** disabled, the default size radio buttons are disabled and the height and width edit boxes are enabled. You can set any default size with the following two restrictions:

- Since the driver does not upscale video, the default size must be smaller than the crop size. For example, if the crop size is 320 x 240, you cannot set default output size 400 x 300.
- Sizes are subject to the granularity requirements of the selected video format, as explained in the Granularity section above. For example, if your video format is I420 and you try to set a default width of 360, it gets adjusted down to 352 as soon as you click on another control.

Pin Properties dialog default entry does not appear in the default VFW/DirectShow mapper dialog. Thus, unless a VFW application, like Virtual Dub, specifically allows for custom resolutions, the VFW app is only able to select from the options the VFW/DirectShow mapper lists.

Both devices, filters, and pins may have associated Properties. Properties are control parameters that can be read from or written to the component. Some Property Pages are standard Windows DirectShow pages. For example, the Property Page for an individual pin is a standard DirectShow page. The Video Proc Amp and Video Decoder Pages are also DirectShow-standard. The rest are proprietary to the Osprey driver.

As a user, you interact with Property through visual Property Sheets, Property Pages, or Property tabs that are part of a tabbed dialog. A programmer can set properties directly from within the code of your application, using either the standard DirectShow API or the custom Osprey extension API that is available from ViewCast in a software development kit (SDK).

Post-Processing mode

The Osprey 240e/450e driver does more than simply move video from the hardware to the system. Its Post-Processing facility includes a variety of filters, transforms, and renderers within the driver, and supports the SimulStream option. Figure 62 depicts the Osprey Post Processing.

Figure 62. Post-Processing mode

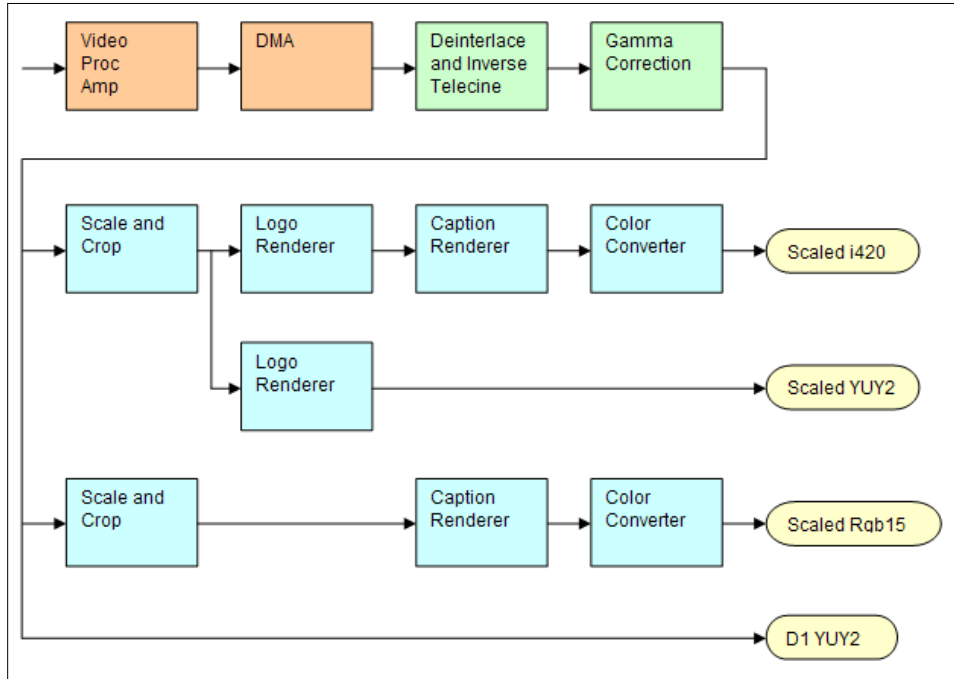


Figure 62 assumes that SimulStream is activated so that more than two video pins are possible. In this case there are four video output pins, represented by the yellow round rectangles:

- The upper pin produces scaled and/or cropped I420 video, with a logo (watermark) and NTSC Closed Captions rendered on the video.
- The second pin produces scaled and/or cropped YUY2 video with a logo but no captioning. In this particular graph, the upper two pins are scaled and cropping identically, so a single scaling operation can service both pins.
- The third pin has a different scale/crop specification, so its video runs through a separate scaler/cropper. The video is captioned and converted to Rgb15.
- The lower pin produces unscaled, uncropped D1 YUY2 video with no logo or captioning.

The video routed to all pins is in this example, deinterlaced and gamma-corrected. Deinterlace or inverse telecine if used are always applied globally to all pins, as is gamma correction. Scaling, cropping, logoing, captioning, and color format conversion are performed separately for each pin.

Post-processing mode has the following capabilities:

- With SimulStream disabled, there is still a maximum of one capture pin and one preview pin on the device at a time. However, there are no restrictions on combinations of video size and rate, color formats, or crop settings. The driver color converts and copies video as required to deliver up to 25 or 29.97 frames per second in any format to the two pins.

- With SimulStream enabled, there can be multiple capture pins and multiple preview pins. Each capture and preview pin pair is on a separate filter. The maximum number of each type of pin is the same as the maximum number of filters you have elected to expose in the SimulStream control group. Any pin can produce video at any size, rate, color format, and crop setting. Of course, practical limits are imposed by the bandwidth of the machine.
- The following post-processing filters can be applied, with or without SimulStream enabled:
 - Motion adaptive deinterlacing and inverse telecine
 - Gamma correction
 - Logos
 - On-video caption rendering

Some of these filters operate globally on all filters and pins of a device, and some operate on a per-filter or per-pin basis:

- The Video Proc Amp controls – brightness, contrast, hue, saturation, and sharpness – are applied globally in hardware to the incoming video.
- The basic reference size – CCIR-601 or square pixel – is established in hardware. Horizontal delay is also performed in hardware.
- Deinterlace / inverse telecine and gamma correction are applied to all filters and pins on the device and have the same settings for all filters and pins.
- Crop, logo, and caption settings can be different for each pin of each filter, and the driver maintains separate settings for each filter and pin.
- Video size, color format, and frame rate can also be different for each pin. It is the responsibility of the application to maintain these settings.

Efficient Video Rendering

The following information is primarily useful to developers, but may also be helpful for those who want to fine-tune existing applications. If you are seeing poor rendering performance, in terms of either excessive CPU utilization or jerky, stuttering video, read this section.

There are at least four basic ways to render video from the capture driver onto the screen. They vary greatly in their efficiency, and applications do not always make the best choice of renderer.

In these descriptions it is assumed that you are using the AVStream driver's Preview Pin. The results would be the same if you used the Capture Pin instead.

Preview Pin to Video Renderer

Figure 63. Video Renderer

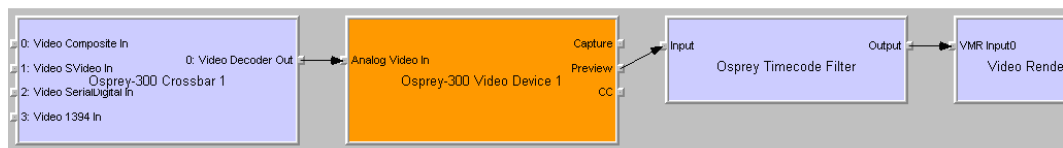


Video Renderer is the oldest and simplest DirectShow renderer. It does not use DirectDraw in the rendering process, which makes it substantially slower than VMR7 described below. It is the default rendering pathway that is chosen when an application says Render without specifying a preferred pathway. For this reason, many applications deliver unnecessarily slow rendering performance.

Video Renderer works best when your output format is RGB rather than YUV, with the RGB format matched to your screen depth. On most modern systems that means RGB32 is the preferred format. If a YUV format is used, an extra filter, AVI Decompressor, will be inserted into the graph to convert the YUV to RGB. The driver can do this conversion faster internally.

Preview Pin to Overlay Mixer to Video Renderer

Figure 64. Overlay Mixer to Video Renderer



Compared to a direct connection of Preview Pin to Video Renderer, the combination of Overlay Mixer plus Video Renderer provides performance that is ...different. It is hard to be more specific than that without reference to specific machines; refer to the data tables below.

This pathway is the only one that renders closed captioning correctly when a DShow CC or VBI pin is used rather than the driver's internal rendering. For CC rendering, the output of the Line 21 filter connects to an input of the Overlay Mixer.

The best video format to use with Overlay Mixer is YUY2.

Preview Pin to VMR7

Figure 65. Video Mixing Renderer 7



VMR7 is short for Video Mixing Renderer 7. VMR7 is a newer renderer that is generally much faster than the old Video Renderer. When the driver is running in Direct Mode, VMR7 uses an efficient DirectDraw configuration to render with almost no CPU overhead, especially when YUY2 video is used. When the driver is running in PostProcessing Mode, DirectDraw is not used but it is still the fastest renderer.

Unfortunately, VMR7 is not the default video renderer in building a filtergraph – an application must explicitly ask for VMR7 in its graph for it to be used. This process causes many simpler applications to render video much less efficiently.

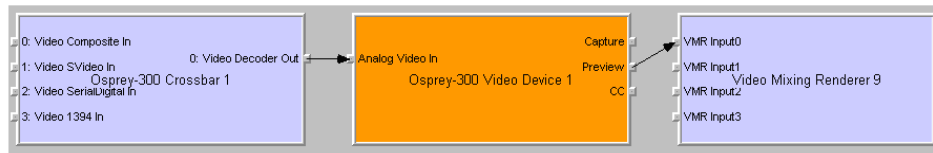
VMR7 works best with YUY2 video and there is usually little reason to use any other format. It will, however, work fairly well with the RGB format – usually RGB32 – that matches the current screen depth. We recommend letting DirectShow choose the video format. It generally makes the correct choice. In particular, on some (usually older) systems, if two video frames are to be rendered with VMR7 at the same time, only one can be YUY2; other(s) are RGB, with a conversion filter inserted into the graph if necessary.

We do not provide an RGB24 option on the preview pin for use with 24-bit screens because on at least some display adapters the rendering of RGB24 to VMR7 is incorrect.

Note: VMR7 cannot be used when closed captions are to be rendered from the driver's DShow-standard CC or VBI pin – use the Overlay Mixer to Video Renderer pathway instead. If the driver's internal rendering is used, the VMR7 works and is recommended.

Preview Pin to VMR9

Figure 66. Video Mixing Renderer 9



Video Mixing Renderer 9 is the newest video rendering method and the one on which Microsoft supposedly is basing its future development. The intent is to combine the functionality of the Overlay Mixer plus Video Renderer in one module that takes advantage of the latest developments in DirectShow. We are finding that at its present stage of development, with our hardware, VMR9 does not achieve the high efficiency of YUY2-to-VMR7. Also, although VMR9 is supposed to function as an overlay mixer for rendering captioning from the driver's DShow CC or VBI pin, we have never seen it function correctly.

Some Data Points

The following measurements are CPU percent on two machines – a fairly old P4, and a dual Opteron 244. The video size is 640 x 480. The screen depth is 32 bits. The following abbreviations are used:

YUY2	the Osprey driver's preview pin in YUY2 format
RGB15	the Osprey driver's preview pin in RGB15 format
RGB32	the Osprey driver's preview pin in RGB32 format
VR	old Video Renderer
VMR7	Video Mixing Renderer 7
VMR9	Video Mixing Renderer 9
AVI	AVI Decompressor
OVL	Overlay Mixer

The PostProc results are shown in two modes: with all post processing filters turned off, and with the adaptive deinterlace filter turned on.

Generally these results show the following:

- The desirability of newer machines for video processing has to do with system architecture more than raw CPU speed.
- VMR7 is generally fastest. If you don't need the driver's PostProcessing, then Direct Mode with VMR7 is especially fast.
- Results for specific pathways can be inconsistent across different machines. For example, on the P4, YUV to VR is faster than RGB to VR; on the Opteron, RGB is faster.

In evaluating these benchmarks, remember that all of them involve video rendering to the screen. Depending on the exact pathway, video rendering can result in CPU utilization that is a lot higher than for other capture scenarios. If you are streaming video or capturing to file, you do not see numbers this high. If you are encoding video, you may see high CPU utilization, but much or most of it is from the encoder rather than the driver.

Dual Opteron 244, 1.8 GHz, 3GB, NVIDIA GeForce 6600 PCIe x16

Rendering Pathway	PostProc w/o Deilace	PostProc w/ Deilace
Video Renderer		
RGB15 -> VR	13%	16%
RGB32 -> VR	10%	13%
YUY2 -> AVI -> VR	12%	13%
YUY2 -> OVL -> VR	18%	20%
VMR7		
RGB32 -> VMR7	25%	26%
YUY2 -> VMR7	8%	10%
VMR9		
YUY2 -> VMR9	13%	15%

P4, 2.0 GHz, 512MB, Rage Fury Pro/Xpert 2000

Rendering Pathway	PostProc w/o Deilace	PostProc w/ Deilace
Video Renderer		
RGB15 -> VR	44%	52%
RGB32 -> VR	44%	50%
YUY2 -> AVI -> VR	49%	56%
YUY2 -> OVL -> VR	55%	62%
VMR7		
RGB32 -> VMR7	54%	61%
YUY2 -> VMR7	39%	43%
VMR9		
YUY2 -> VMR9	47%	52%

Video standards and sizes

Video standard refers to whether the video signal format is NTSC, PAL, or SECAM. Depending on the exact product version you have, some or all of the following standards are available:

525-line formats:

- NTSC-M – North America
- NTSC-J – Japan
- 625-line formats:
 - PAL-B, D, G, H, I – many countries in Europe and elsewhere. B, D, G, H, and I refer to five nearly identical subformats

Full-sized NTSC-M and NTSC-J have 525 lines total, 480 lines visible, per frame and a display rate of 59.94 fields per second, or 29.97 interlaced frames per second. Although capture-to-PC applications normally use only 480 video lines, the full NTSC frame actually contains 485 video lines, and the AVStream driver provides a control to capture all 485 lines. The control is located on the RefSize property tab.

Full-sized PAL and SECAM have 625 lines total, 576 lines visible, per frame and a display rate of 50 fields per second, or 25 interlaced frames per second.

The standard frame sizes are different for NTSC and PAL. For example, the half-frame size in pixels is 360 x 240 for NTSC, and 360 x 288 for PAL. The driver automatically adjusts the reference size and default size for the video standard you are using.

Color formats

The Color format is the arrangement of data bits representing the colors of each pixel. For example, in the RGB555 format, each pixel of data is stored as 5 bits of red, 5 bits of green, and 5 bits of blue color information.

Video delivered by the Osprey board to the system is in uncompressed format. It is possible to compress the video at a subsequent stage of processing. However, this dialog field refers specifically to the uncompressed raw video that the board delivers to the system.

The Osprey AVStream driver supports the following capture pin formats.

- YUY2 and UYVY – Each pixel is represented with a total of 2 bytes (16 bits) of data. The data is encoded as separate data for luminance (intensity) and chrominance (color). This mode is mainly used as an input to software compressors. See *YUV format details*.
- YUV12 planar – Also known as I420. This format is complex – there are aggregate 12 bits of data per pixel. Each pixel has 8 bits of luminance data. Each group of 4 adjacent pixels arranged in a 2 x 2 square shares two bytes of chrominance data. See *YUV format details*.
- YVU9 planar – Similar to YUV12 planar, except there are aggregate 9 bits of data per pixel, and each byte pair of chrominance data is shared by 16 adjacent pixels arranged in a 4x4 square. See *YUV format details*.
- RGB32 – Each pixel has four bytes (32 bits) of data – one each for red, green, and blue, plus one byte that is unused. The pixel has 256 shades of each of the three colors, for a total of 16.7 million colors.

- RGB24 – Each pixel has three bytes (24 bits) of data – one each for red, green, and blue. This is another “true color” mode with 16.7 million colors.
- RGB555 – Each pixel has two bytes (16 bits) of data. There are 5 bits each of red, green, and blue data; the sixteenth bit is unused. This is a “high color” mode, also known as “5:5:5.”
- RGB8 (Greyscale) – The Osprey AVStream driver uses the RGB8 format for greyscale video. RGB8 is a palletized format. Each pixel is represented by one byte, which indexes one of 256 colors in a color palette specified by the driver. The Osprey driver sets the color palette to greyscale entries, and captures “Y8” luminance-only data.

YUV format details

YUY2, UYVY, YVU9, and YUV12 are YUV formats. In these formats, each pixel is defined by intensity or luminance component, Y, and two color or chrominance components, U and V. Because the human eye is less sensitive to color information than to intensity information, many video formats save storage space by having one luminance byte per pixel while sharing the chrominance byte among two or more pixels. YUV is also similar to the color encoding used for analog color television broadcast signals.

YUY2 mode, sometimes referred to as 4:2:2 packed mode, consists of a single array of mixed Y, U, and V data. Each pixel has one Y (intensity) byte. Each pixel shares its U and V bytes with one of the pixels horizontally next to it.

YUY2 uses the same number of aggregate bytes per pixel as RGB15, which is two. However, YUY2 is more efficient than RGB15 because it stores relatively more of the intensity information to which the human eye is most sensitive.

UYVY mode is similar to YUY2 except that the bytes are swapped as follows:

- YVU9 and YVU12 are “planar” modes – the Y, U, and V components are in three separate arrays. It is easiest to explain the format with an example: Let’s say you have a 320 x 240 YVU9 format. The buffer has 320 x 240 bytes of Y data, followed by 80 x 60 bytes of V data, followed by 80 x 60 bytes of U data. So each U and each V byte together contain the color information for a 4 x 4 block of pixels.
- Similarly, a 320 x 240 YUV12 format has a 320 x 240 Y array, followed by a 160 x 120 U array, and then a 160 x 120 V array.

Note: In the I420 format used by Osprey, the order of the U and V arrays is reversed from the order in the YVU9 format.

Closed captioning (CC)

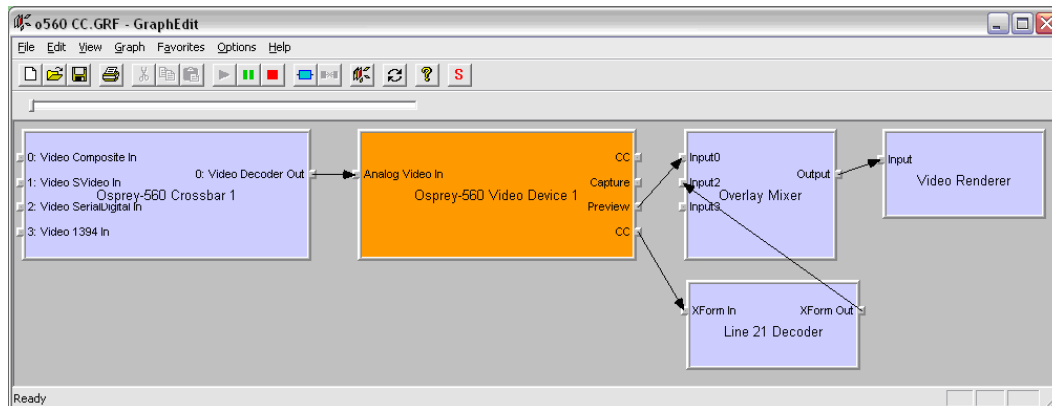
The Osprey AVStream driver supports NTSC closed captions in three separate ways.

- Through standard DirectShow CC and VBI pin
- By rendering captions directly onto video on the capture or preview pin; the captioned video can be streamed, written to file, or rendered directly
- Through an Osprey custom property

On products other than the Osprey 530/540/560, the driver also provides PAL/SECAM captions as well as teletext data in raw form via the VBI pin (not through the CC pin). Refer to the next section on Vertical Blanking Interval (VBI) Capture for more information. The rest of this section is specific for NTSC captioning only.

Captioning via CC or VBI pins

Figure 67. CC or VBI pins



The driver supports the standard DirectShow CC and VBI pins. The CC character pair data can be streamed to applications such as Windows Media Encoder 9, or rendered directly to the screen using the DShow Overlay Mixer filter. The 4.6 driver can be set to output CC field 2 character pairs on the CC pin, instead of the standard CC field 1 data. XDS (Vchip) data is embedded in the field 2 stream.

The GraphEdit filtergraph shown here displays CC rendered onto preview video. The Overlay Mixer combines the CC overlay with the preview video, which is then rendered onscreen. It is also possible to capture the character pair stream as a standard stream of an AVI file, (although there will be problems with timestamping and synchronization); or, to directly manipulate the CC stream in a standard way with a custom application.

Our testing with the current version of DirectX 9 indicates that closed captions do not render properly with the VMR9 renderer in place of the Overlay Mixer / Video Renderer combination. Therefore, the default Video Renderer in combination with Overlay Mixer should be used.

When SimulStream is not installed, the driver supports two CC pin instances. One could be associated with the video capture stream, the other with the preview stream. In practice, a DirectShow Smart Tee Filter can be inserted into the graph to make any number of VBI pins. When SimulStream is installed, you can have two CC pin instances per SimulStream filter.

The driver has three built-in user-accessible controls that affect Closed Captioning.

- On the RefSize property page, in the control group, you must select 480-line video and the radio button to start video at either Lines 23/286 or Lines 22/285.
- On the Captions property page, most of the controls relate to the driver's internal direct rendering on video. The following control selects field 1 or field 2 as the field to be streamed through the CC pin. This control is per-filter; both available pins on the filter are set the same way. For SimulStream users, the pins on different filters can have different settings.
- On the **Device** ➤ **Extra** property page, you have the choice to set with Normal or AVI-Compatible timestamping of Closed Caption samples.

This control is a workaround to an apparent problem in DirectShow – if you attempt to capture a CC character pair stream to an AVI file with Normal timestamping, the file becomes extremely large and the capture will fail within a few seconds. The AVI-Compatible mode allows capture of CC to AVI. Unfortunately, the problem with timestamping means that time synchronization between the video and CC streams depend on their physical interleaving in the file, so that time synchronization is poor. If the AVI file is set up to be non-interleaved, synchronization is not good. If the AVI file is set up to be interleaved, synchronization is poor.

For all applications other than capture to AVI, this control should be set to Normal. WME9 among others requires the Normal setting if CC is used.

Windows Media Player does not play back an AVI file with an embedded CC stream. The following GraphEdit filtergraph plays back an AVI file containing a video stream plus a CC stream, with the CC rendered on the video:

Direct CC rendering on video

The driver can render closed captions directly onto capture or preview video. The captioned video can be encoded, written to file, or rendered directly to the screen.

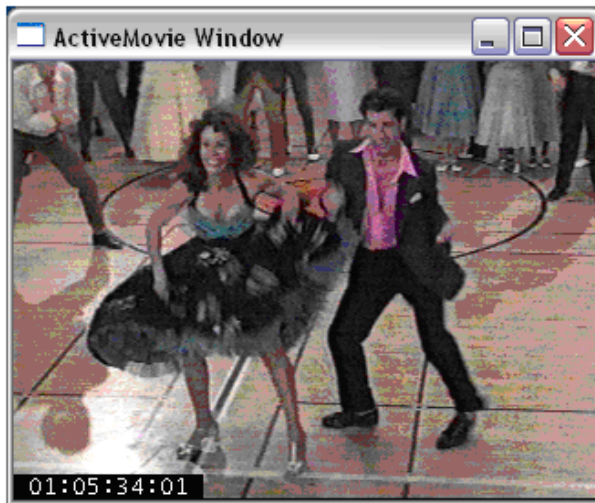
CC streaming interface

The driver supports an Osprey custom property which provides the closed caption character stream for use by custom applications. The Osprey filter named CCLineInterp.ax, supplied with the driver package, provides user-mode support for this captioning mode. The Osprey sample applet named CCChannels.exe, also supplied with the driver package, demos a CC line interpreter and XDS (Vchip) extraction and display. Both the filter and the applet are provided in source code form in the SDK.

Vertical Interval Timecode (VITC)

Vertical Interval Timecode (VITC) data is embedded in the Vertical Blanking Intervals (VBIs) of some video content. Timecode marks each frame with an hour / minute / second / frame number marking that you can use for frame-precise editing.

Figure 68. ActiveMovie Window



The current Osprey VITC implementation is preliminary in nature. The features and method of implementation are subject to change. We invite comments on the timecode-related capabilities that you need for your application.

Osprey's approach to VITC is to invisibly watermark the video bits of each outgoing video frame with its timestamp data. The illustration shows a timecode extracted from a watermarked frame and rendered as text on the video. Four elements are used to produce it:

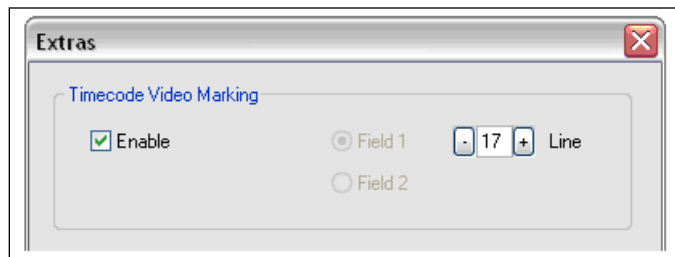
- The device extracts timecode data from the vertical blanking interval (VBI) waveform.
- The driver watermarks timecode into the video preview or capture pin's output data.
- A custom filter decodes the watermark from the video and renders it.
- A GraphEdit graph combines the required filters.

The Osprey Timecode Filter resides in the module TCOverlay.ax and is installed and registered as part of the standard driver installation. The Osprey AVStream SDK includes the source code for this filter.

The Osprey Timecode Filter also exposes to applications a custom property and callback function that allows it to return the VITC data for each frame along with the frame's timestamp to the application.

This capability requires custom programming. Refer to the *Osprey AVStream SDK Users' Guide*. A sample SDK applet named TCAApp illustrates the interface.

Figure 69. Timecode Video Marking



Timecode stamping must be enabled in the driver before it can be used, and the field and line number correctly set. To access the controls, go to the Device property tab and click **Extras**.

It is recommended that you disable timecode marking when not in use, especially the auto search feature (on a slow machine it uses several percent of CPU bandwidth) especially if timecodes are not present.

Note: VITC and LTC – Longitudinal Timecode – are two distinct encoding systems, and this driver supports only VITC.

A suggested reference on timecode is *Timecode: a user's guide* – 3rd ed., John Ratcliff, Focal Press, 1999.

Vertical Blanking Interval (VBI) capture

The Osprey AVStream driver provides DirectShow-compatible VBI pins. VBI data includes Vertical Interval Timecode (VITC) in both the NTSC and PAL worlds. In NTSC, line 21 Closed Captioning (although it is part of the video interval rather than true VBI data), is commonly treated as VBI data. In PAL, World Standard Teletext (WST) is encoded in the VBI data region.

The driver delivers VBI data as raw waveforms, which are then decoded by external DirectShow filters. DirectShow provides three filters under the classification "WDM Streaming VBI Codecs" that will decode data from VBI pins:

- CC Decoder
- NABTS/FEC VBI Codec
- WST Codec

With the Osprey AVStream driver, you can use either the CC pin or the VBI pin to obtain closed caption data. If you use the VBI pin, an extra filter is required to turn the raw waveform into CC character pairs.

When SimulStream is not installed, the driver supports two VBI pin instances. In practice, a DirectShow Smart Tee Filter can be inserted into the graph to make any number of VBI pins. When SimulStream is installed, multiple VBI pins are allowed.

Audio driver

Setup and control for audio are much simpler than for video.

Selecting the audio source and input volume

You set the audio source using the Osprey mixer driver interface. Most applications, including the Windows Media Encoder applications, interface to the mixer driver directly and expose the look and feel specific to that application. However, you can also use the default Windows interface to the mixer driver. There are two simple methods for getting to the mixer source and volume control dialog box.

- The easiest method for accessing this interface is to right click the speaker symbol on your taskbar (typically on the bottom right-hand side of your screen). Then select the **Open Volume Control** option (Figure 70). (There is a check box in **Control Panel > Sounds and Audio Devices** to make this icon appear.)
- If you do not see the speaker symbol, click Start on the Start Menu, select Start > All Programs > Accessories > Entertainment > Volume Control.

Either of these two methods brings up the audio mixer interface for the audio playback device, as shown below.

Figure 70. Open Volume Control

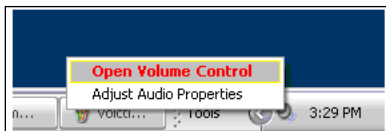
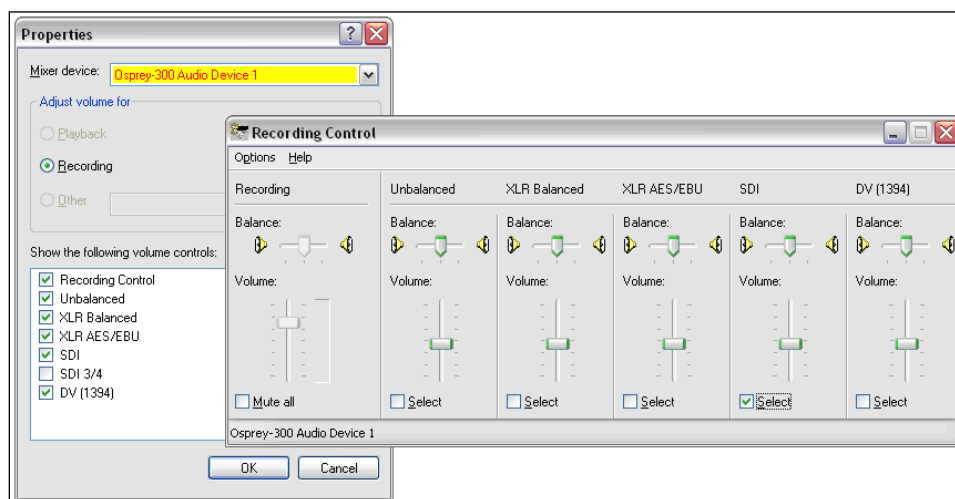


Figure 71. Recording Control



To get to the Osprey audio capture (recording) device, select **Properties** under Recording Control options menu. The Properties dialog displays. Click on the Mixer device drop-down list at the top to see

the list of audio input and output devices, including one or more Osprey cards. When you have chosen the device, click **OK**, and you will be returned to the Recording Control display (Figure 71).

The Osprey device is not a mixer in that it does not allow for mixing the various audio sources. Therefore, when you select one audio input, any other input you previously selected becomes unselected. The **Select** check box at the bottom of each source sets which source is actually being used.

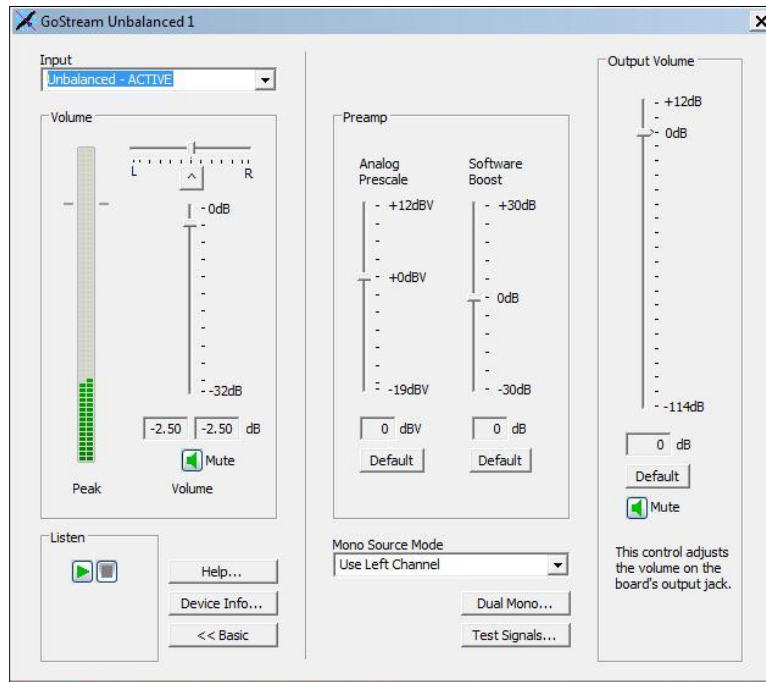
Osprey cards have hardware gain control. To control hardware gain, use the volume slider in the mixer applet. The unity gain setting is when the volume slider is all the way up (in default driver settings).

The quick-access volume control (left click on the speaker symbol) on the task bar controls recording volume and playback volume. To change record levels, go to **Options > Properties > Recording**.

Audio properties page

Many applications, including Windows Media Encoder, display the illustrated property dialog for setting audio source and volume level. This is a general-purpose DirectShow property page that our driver has to support but which is not quite intuitive in its operation (Figure 72).

Figure 72. Audio properties page



To select the audio source using this dialog, select the desired input in the Pin Line: selection box, then click **Enable**. This step also deselects whichever input had been previously selected.

For example, if you select **XLR Balanced** instead of the first input on the list (Unbalanced), and you close and reopen the window, **Unbalanced** appears in the selection box and the **Enable** box is not checked. If you again select **XLR Balanced**, the **Enable** box automatically displays as checked.

This property page makes more sense if you understand it is designed to allow mixing of audio inputs for devices that support that. Osprey audio capture filters do not support mixing of inputs – you have to select one stereo input at time – so the DirectShow design is not convenient in this case.

Audio formats

The Osprey hardware supports sampling of analog audio at 32, 44.1 and 48 kHz in 16-bit PCM format. Captured audio data is down-sampled and reformatted if necessary by Microsoft system audio components, allowing an application to capture audio data in 8-bit and 16-bit mono or stereo formats at any of the following data rates:

- 8 kHz
- 11.025 kHz
- 16 kHz
- 22.05 kHz
- 32 kHz
- 44.1 kHz
- 48 kHz

Audio playback

Osprey cards provide audio capture only, not audio playback. Continue to play back captured audio using your system soundcard.

Audio configuration

The OspreyConfig applet is included as part of the Osprey AVStream driver package. It is also provided in source form in the Osprey AVStream SDK. It provides supplementary controls that are not available via the standard system properties.

OspreyConfig's controls are device-specific and apply only to Osprey audio capture devices. Use the Device menu list at the top of the applet's window to select which device you are controlling.

Mono Source Mode

If set to **Use Left Channel**, then left channel audio data is copied to the right channel.

If set to **Use Right Channel**, then right channel audio data is copied to the left channel.

If set to **Average Left and Right**, no copying is done.

The Microsoft mixer component always averages both channels when converting to mono. If a signal is present on, say, the left channel only, the Average mode will average the left channel with the silent right channel, effectively halving the signal amplitude. Setting this control to Left results in only left channel data in the mono capture, with no amplitude drop.

Dual Mono

The Dual Mono window enables a special mode of the driver in which the left and right stereo pair inputs to a device are used as two separate mono channels serving two separate audio capture filters. A typical use for this mode is audio-only applications where stereo is not needed and maximum density of inputs per system is the driving factor.

In Dual Mono mode, each audio device enumerates as two separate filters, respectively for the left and right physical inputs. The filters' names will have L and R suffixes, for example, Osprey 230 Audio Device 1L.

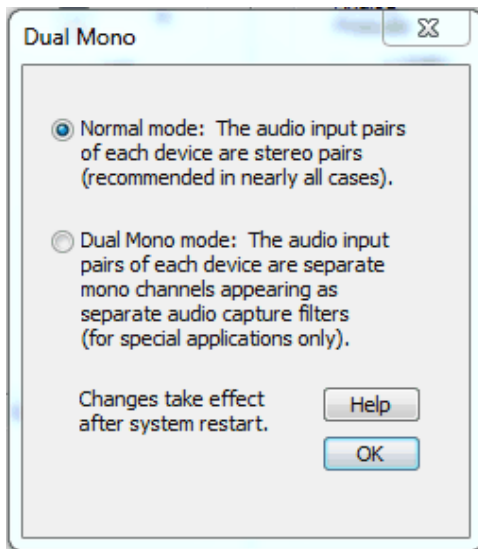
These filters behave for the most part like normal audio filters. When you use AudioConfig, or most other applications, you connect with either the L or R filter, one at a time, not both. The user volume, balance, and mute (Basic mode of AudioConfig) are independent for the L and R filters. Each has two quasi-stereo outputs. The audio is identical on each quasi-channel, except that the user balance control can be used to reduce the volume on one channel.

However, the underlying hardware requires:

- Both filters of the pair must be set to the same audio input – unbalanced, XLR balanced, etc.
- Both must have the same hardware prescale and software boost settings.
- The Mono Source Mode control has no meaning in Dual Mono mode, and is disabled.

This control globally affects all audio devices of the category that the dialog is accessing (that is, all Osprey 2X0s as a group, or all Osprey 5X0s as a group). When the setting is changed, you have to restart the system for the change to take effect.

Figure 73. Dual Mono



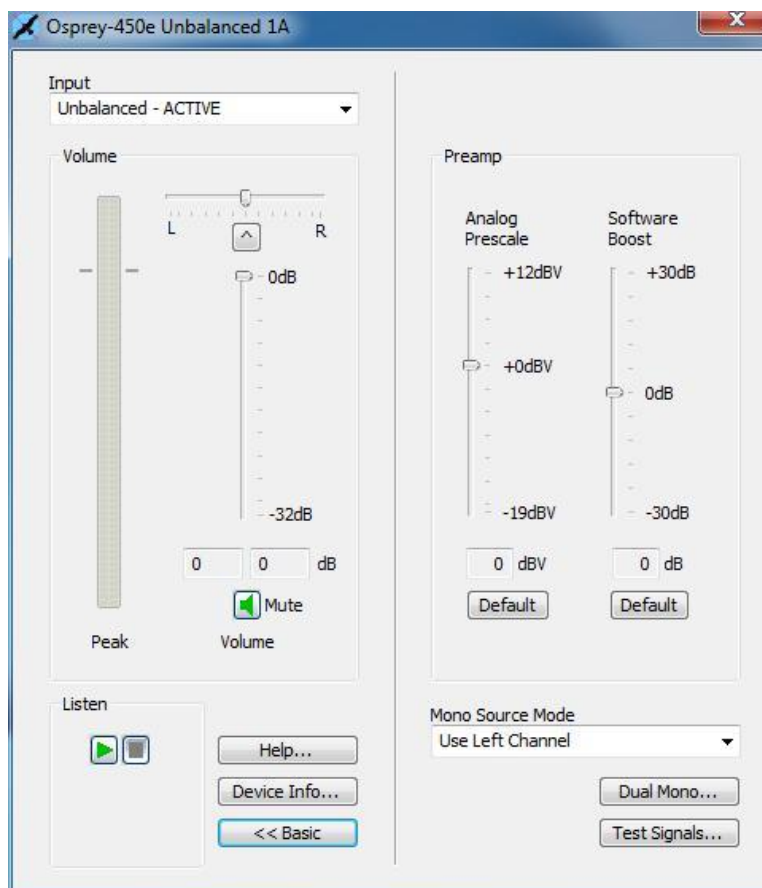
Audio level

This control sets the hardware Input Reference level and software-based Boost factor. The settings are separate for each input of each device, and are applied to whichever input is selected in the current application or in the system mixer. The settings displayed do *not* automatically update when you change inputs in the application or mixer click update to refresh the settings.

In Figure 72, the Audio Level control is different depending on which input is selected.

The Input Reference level is meaningful only on the analog unbalanced and balanced inputs, and is calibrated differently for each when a digital input is selected this control is disabled. This is a hardware gain control with the default level chosen such that the expected amplitude of a full volume input signal will have adequate headroom without clipping. If you do experience clipping, or are working with low-level signals, you can adjust this level. On this control, a higher reference level results in lower gain, so the quietest setting is at the top of the scale. Click **Default** to restore the default value.

Figure 74. Input reference level



The Boost setting is a software gain adjustment that applies to both analog and digital inputs. You can set Boost individually for each input. It supplements the system mixer volume controls by providing a wide adjustment range. You can use it to calibrate or normalize input levels across multiple inputs; or to accommodate microphones or other non-line inputs that have nonstandard signal levels. Again, **Default** restores the default value.

Appendix A: Osprey hardware specifications

Osprey 240e



Environmental specifications

Operating temperature range	0° to 40° C
Non-operating temperature range	-40° to +75° C
Operating humidity range	Between 5 % and 80 % (non-condensing) @ 40° C
Non-operating humidity range	95 % RH (non-condensing; gradient 30 % per hour
Operating altitude range	0 to 3,048 meters (10,000 feet)
Non-operating altitude range	0 to 15,240 meters (50,000 feet)

- PCI Express Bus compliant
- Approximate card weight = 85 grams

Figure 75. Osprey 240e long back plate

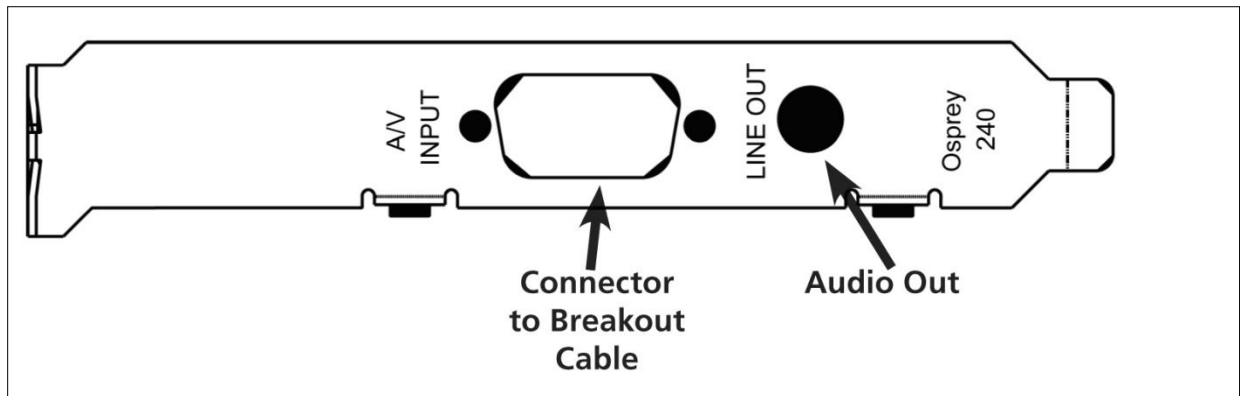


Figure 76. Osprey 240e short back plate

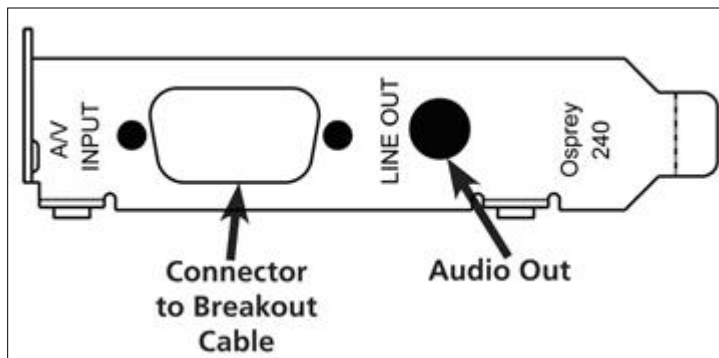


Figure 77. PCI Express Bus compliance

- PCI Express Bus compliant
- Approximate weight is 198 grams

Osprey 450e

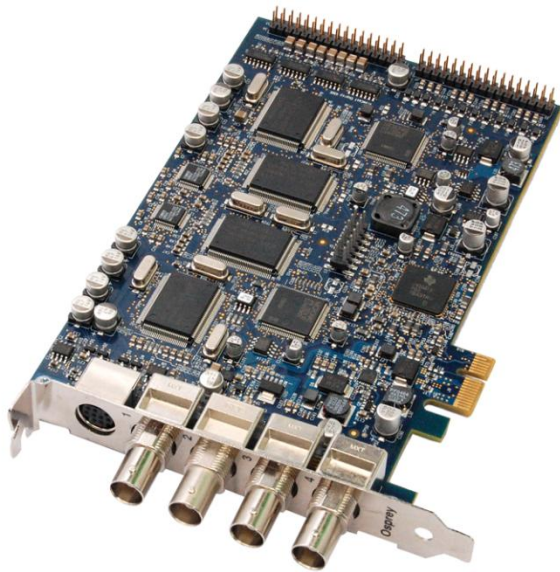
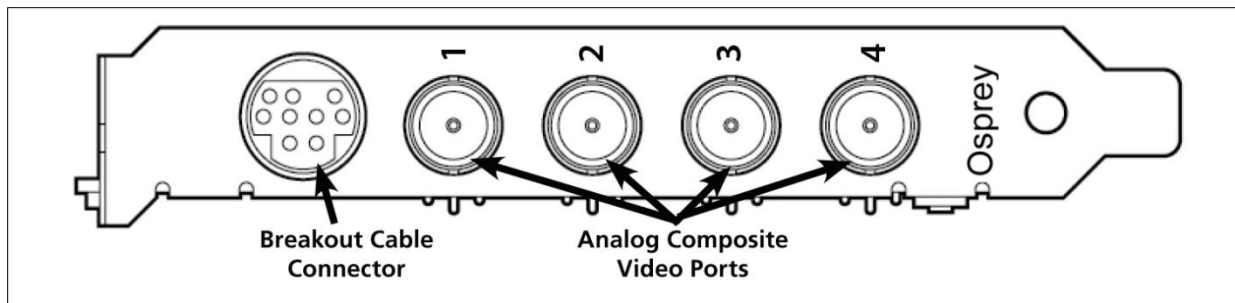


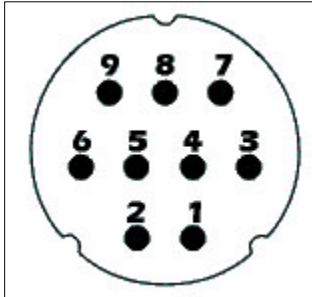
Figure 78. Osprey 450e back plate



Appendix B: Osprey 450e audio cable

Figure 79 shows the male connector on the cable.

Figure 79. 9 pin mini-DIN male



Mini-DIN	Signal	RCA Connectors
1	Channel A Left	Channel A Left Center
2	Channel A Right	Channel A Right Center
3	Channel B Left	Channel B Left Center
4	Channel B Right	Channel B Right Center
5	Channel C Left	Channel C Left Center
6	Channel C Right	Channel C Right Center
7	Channel D Left	Channel D Left Center
8	Channel D Right	Channel D Right Center
9	Shield	Channel A Left Shield
9	Shield	Channel A Right Shield
9	Shield	Channel B Left Shield
9	Shield	Channel B Right Shield
9	Shield	Channel C Left Shield
9	Shield	Channel C Right Shield
9	Shield	Channel D Left Shield
9	Shield	Channel D Right Shield

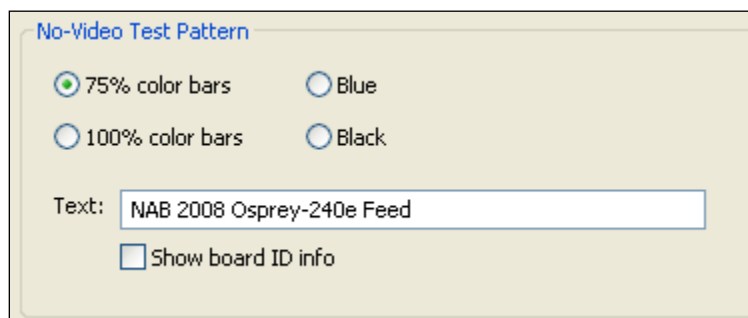
Appendix C: Troubleshooting

Color bars on video screen

The Osprey 240e/450e AVStream driver has a built-in color bar generator. If color bars appear in your video preview window, video is not present on the selected video input (Figure 80).

You can adjust or change the color bar display, including the text overlay on the screen, using the Device Properties tab.

Figure 80. No-Video Test Pattern



To solve this problem, check the following:

- Check that the camera, VCR, or other video source is powered and that its output is connected to the Osprey card's input.
- Check that you selected the correct video input in the Control Dialog's Source page.

Scrambled video image

You may have set the wrong video signal format for the signal input you are using. For example, you may have told the driver to look for NTSC-M video but are using a PAL-BDGI video source. Make sure you know what signal format your video source is generating. Go into the Video Standard field of the Control Dialog's Source page, and click the button for that signal format.

Poor video quality at large frame sizes

Large frame sizes with the deep pixel depth (24- or 32-bit), or complex format (YVU9 or YUV12 planar), impose heavy demands on the PCI bus' data transfer capacity. Our experience is that some systems cannot handle these formats at full frame sizes.

Systems vary in their data transfer limits. The characteristics of the PCI bridge are often more important than processor speed.

If you are having problems, we recommend you:

- Use a smaller frame size (480 x 320 or less)
- Use a shallower color format (RGB15 or RGB24 instead of RGB32)
- Try a YUV format instead of an RGB format, and a packed format instead of a planar format

If you have a choice of PCs for video capture, try using another system with a different system board chipset.

Multiple horizontal lines across video image

If multiple, regularly spaced, horizontal lines appear across your video image and your source material is copyrighted and copy-protected, you are seeing Macrovision™ copy protection.

The lines can vary in color from yellow to blue to green. These lines are not present in every frame of video. There may also be a black band at the top of the frame.

There are other brands of copy-protection besides Macrovision. Some of these brands employ similar methods (resulting in the above) and others do not. This image is a good example of Macrovision effects but you should find a good way, if possible, to briefly note that other forms of copy protection exist and they may have different effects on the picture.

Cannot play back recorded audio

If you have a sound card installed, you should be able to hear audio when you play back recorded audio.

Verify that the volume control for your playback device is not muted.

Verify that the selected playback device is your sound card. Some Windows applications cannot use a recording device unless a playback device is also installed. The Placeholder device cannot play back recorded audio. You can use the same method to select playback device that you use when selecting the audio source.

Audio recording control comes up with wrong device and wrong inputs

The cause of this problem may be that you currently have or have had previously, a Video for Windows audio capture driver installed in the system. The Osprey AVStream install process normally removes a

previous Video for Windows driver, but if you have multiple Osprey cards installed you do have the option of running the Video for Windows driver on some cards and the AVStream driver on others. Unfortunately the Recording Control does not work smoothly in this situation. The Video for Windows device will always try to act like it is the selected device even if it is not. You have to manually enter **Recording Control's Options** ➤ **Properties** dialog to select your device.

If you no longer need the Video for Windows driver, you can uninstall it using instructions obtainable from Osprey technical support. If you are comfortable using RegEdit to edit your registry, you can instead go to the following location:

HKEY_LOCAL_MACHINE\SOFTWARE\Microsoft\Windows NT\CurrentVersion\Drivers32

Index

16:9 Wide, 28

2-Frame Algorithm, 39

3-Frame Algorithm, 39

525-Line (NTSC) Vertical Format, 31

A

Accessing the OspreyConfig Utility, 7

ActiveMovie Window, 79

Adaptive Deinterlace window, 39

adjust dialog, 39

Audio Level control, 86

Audio properties page, 83

Auto, 36

Auto Size check box, 65

Auto Sizes, 65

B

basic reference size, 70

Board Numbering, 47

Both button, 51, 56, 61

buffers, 43

C

Captions tab, 50

Capture, 44

Capture button, 51, 56, 61

Capture color format, 63

Capture drop-down list, 62

capture pin formats, 75

CC Channel, 52

CC or VBI pins, 77

CC Pin, 53

CCIR-601 setting, 27

change the default settings of the 4.6 driver, 11

chroma, 16

Cine Phase, 38

Closed Caption Timestamping, 49

closed captioning, 77

Color formats, 75

Composite/SVideo dongle connections, 17

Control used to open the properties page, 10

cropping, 60

Current Using settings, 38

Currently Using group, 38

Custom installation, 4

custom properties, 35

D

default output size, 60

Default Output Size, 65

degree of weighting, 58

Deinterlace settings, 36

Device controls, 42

Device Info, 46

Device Info window, 46

Device tab, 42

Diagnostic Logging, 44

Digital Signature Not Found Window, 6

DirectShow, 67

Dual Mono, 85

E

Enable Cropping, 63

Enable Key Color, 57

Enable Key Color check box, 57

Enable Logo check box, 56

Extras, 49

F

File and Color, 56
filtergraph, 72
filters, 13
Filters tab, 32
filters, pins, and properties, 67

G

Granularity controls, 62

H

Horizontal Delay, 28
Horizontal Format, 27

I

Initial OspreyConfig user interface, 8
Input Format, 19
Input reference level, 86
Input Reference level, 86
Input tab, 14
Input Tab without AV option, 16
Installing the video capture card, 5
Inverse Telecine, 36
inverse telecine process, 37

K

key color, 57

L

Logo position, 58
Logo Position, 58
logo property controls, 55
Logo tab, 54, 59
luma, 16

M

motion adaptive, 36
motion adaptive deinterlace, 37
motion threshold, 39
multiple filters, 34
Multiple instances, 34

N

Notch Kill, 19
No-Video Test Pattern, 43
Nudge buttons, 59
Number of Capture Buffers Requested, 43

O

one filter, 34
Osprey 240e Custom Setup screen, 4
Osprey 240e long backplate, 88
Osprey 240e short backplate, 88
Osprey 450e card with optional plug-in, 16
Osprey Video Device Properties window tabs,
11
OspreyConfig utility to access devices, 13
Other check box, 57
Overlay Mixer to Video Renderer, 71

P

PCI Express Bus compliance, 88
Pin Select, 56
Pin Select setting, 63
pins, 13
Post-Processing mode, 69
Preview, 44
preview and capture pins, 62
Preview button, 51, 56, 61
Preview color format, 63

R

Recalc button, 64
Recording Control, 81
Reference Size for Crop and Logo Placement, 30
RefSize tab, 26
Render Logical White As, 52
Render NTSC Closed Caption On Video, 52

S

Selecting a device for configuration, 9
set cropping area, 60
Show [4] filters per device, 34
Show Properties for Selected Filter button, 10
SimulStream enabled, 33
SimulStream option, 33
Size and Crop tab, 60
Source Width, 29
Square Pixel setting, 27
System Settings Change Window, 6

T

telecine, 37
Test Mode, 40
Timecode Video Marking, 49, 80
Tolerance, 57
Tolerance control, 57

U

Use WideScreen Signal (WSS), 28

V

VbiGraph, 21
vertical blanking intervals, 79
Vertical Interval Timecode, 79
Video Decoder tab, 24
video filter, 9
video input, 15
Video Mixing Renderer 7, 72
Video Mixing Renderer 9, 73
Video Proc Amp controls, 70
Video Process Amplifier, 22
Video Renderer, 71
video rendering, 71
video standard, 15, 75
Video Standard drop-down list, 18
Video Standard field, 18
VideoCheck, 20
VideoGraph, 21
VMR7, 72, 73
VMR9, 73
Volume Control, 81

W

Warranties, 1

Y

YPrPb dongle connections, 17



Free Manuals Download Website

<http://myh66.com>

<http://usermanuals.us>

<http://www.somanuals.com>

<http://www.4manuals.cc>

<http://www.manual-lib.com>

<http://www.404manual.com>

<http://www.luxmanual.com>

<http://aubethermostatmanual.com>

Golf course search by state

<http://golfingnear.com>

Email search by domain

<http://emailbydomain.com>

Auto manuals search

<http://auto.somanuals.com>

TV manuals search

<http://tv.somanuals.com>