

Vincent

CD-S6MK

COMPACT DISC PLAYER

Operating Instructions

Consumer Guide

Thank you for your purchasing of **Vincent** product.

Please read this manual carefully to obtain the best performance of the **CD-S6MK** on your system.

Warning	1
Function introduction	
Front panel controls	2
Display controls	4
Rear panel controls	5
Remote controls	7
Precautions	8
Troubleshooting	9
Technical specifications	10

Warning



CAUTION: TO REDUCE THE RISK OF FIRE OR ELECTRIC SHOCK, DO NOT EXPOSE THIS APPLIANCE TO RAIN OR MOISTURE. DAGEROUS HIGH VOLTAGES ARE PRESENT INSIDE THE ENCLOSURE. DO NOT OPEN THE CABINET .REFER SERVICING TO QUALIFIED PERSONNEL ONLY.



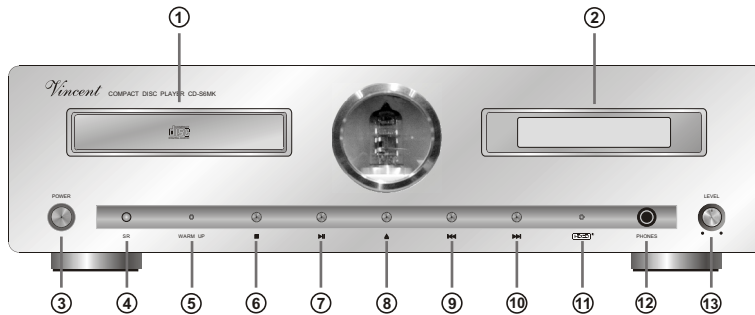
The lightning flash with arrowhead symbol, within an equilateral triangle is intended to alert the user to the presence of uninsulated "dangerous voltage" within the product's enclosure that may be of sufficient magnitude to constitute a risk of electric shock to persons.



The exclamation point within an equilateral triangle is intended to alert the user to the presence of important operating and maintenance(servicing)instructions in the literature accompanying the appliance.

Function introduction

Front Panel Controls



1. Disc Tray

Set a disc on this tray with its label side up. The tray slides out toward you when the OPEN/CLOSE button is pressed in any operation mode. When the OPEN/CLOSE button, PLAY/PAUSE "▶||" button is pressed, the disc tray will move in.

2. Multi-Function Display Window

This display shows the state of play and each operation mode, as described below. (In the pause mode, these indicators remain as they are, but in the stop mode, they will go off.)

3. Power Switch

Press to turn the power to unit ON; the display window will light. Pressing it again turns the power OFF; the display window will go out.

4. Incept Windows

5. Warm Up

This indicator light flashing when turned the power on, after 20 seconds it lights up that the compact disc player is in stand by mode.

6. Stop Button (■)

Press the button to stop playback. This button is also used for deleting a program. The "■" indicator will light while the disc is being stopped.

Function introduction

7. PLAY/PAUSE Button (▶||)

Press this button first time to start normal play, or programmed play. The "▶" indicator will light while the disc is being played. Press this button second time to suspend play. The "||" indicator will light while the disc is being suspended.

8. OPEN/CLOSE Button (▲)

When this button is pressed, the disc tray will slide out. When it is pressed again, the disc tray will slide back into the player. During opening and closing of the disc tray, the "■" indicator blinks; the indicator lights continuously when the loading operation is complete.


9,10. Back/Next Button(◀◀, ▶▶)

When the "◀◀" button is pressed during playback, play restarts at the beginning of the Back or a preceding track.

When the "▶▶" button is pressed, play restarts at the beginning of the next or a Subsequent track. The same number of tracks as the number of times the button is pressed can be skipped.

11. HDCD Indicator

When the disc has HDCD message, the indicator will light.

 HDCD[®] High Definition Compatible Digital[®] and Pacific Microsonics[™] are either registered trademarks or trademarks of Pacific Microsonics, Inc. in the United States and/or other countries. HDCD system manufactured under license from Pacific Microsonics, Inc. This product is covered by One or more of the following: In the USA; 5,479,168,5,638,074, 5,640,161,5,808,574,5,838,274,5,854,600,5,864,311,5,872,531, and in Australia: 669114. Other patents pending.

12. Headphone Jack

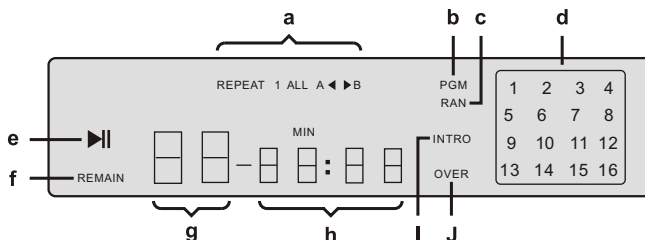
Stereo headphones can be plugged into this jack for private listening.

13. Headphone Level Control

Turn headphone level control clockwise to increase the headphone level and counterclockwise to decrease it.

Function introduction

Display Controls



a. Repeat indicators

b. Program indicator

c. Random indicator

d. Track number indicator

e. Play/Pause indicator

f. Remain indicator

g. Track indicator

h. Elapsed playing time

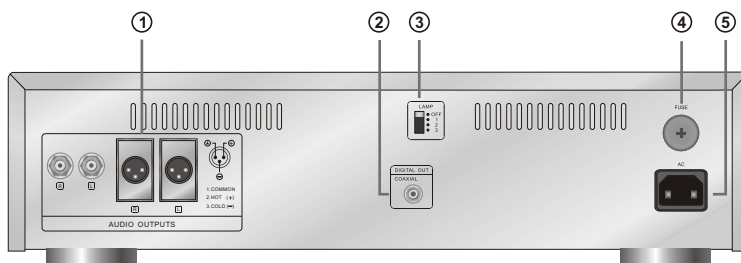
i. Intro indicator

j. Over track number indicator

when the disc has over 16 tracks, the indicator will light.

Function introduction

Rear Panel Controls



1. Analog Output RCA / XLR Jacks

These jacks connect the power amplifier input RCA/XLR jacks.

2. Digital Output RCA Jack

This jack connect the D/Aconverter input RCA jacks.

3. Lamp Switch

Press to adjust the tube windows brightness of front panel.

4. Fuse Box

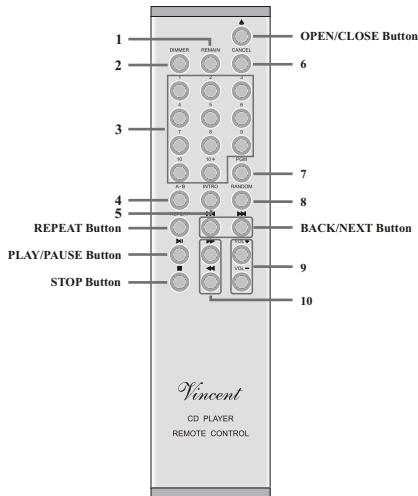
The compact disc player overloads as soon as fuse melting up at once A replacement of fuse by the authorized serviceman is required.

5. AC Inlet

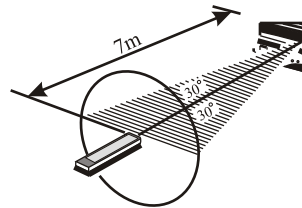
Plug the supplied power cord into this AC Inlet and then into the power outlet on the wall.

Function introduction

Remote Controls



Incept Windows



Remote Control

- When Operating the remote control, point it at the remote sensor located on the amplifier is front panel.
- The remote control can be used up to 7 m from the amplifier and within a 30° angle on each side of the sensor.
- Notes : Exposing the remote sensor to direct sunlight or strong light may cause faulty operation.

1. REMAIN Button

Switches the time shown on the display to the remaining time of the current track (REMAIN) or the remaining time of the entire disc (TOTAL REMAIN).

2. DIMMER Button

Press to adjust the display illumination brightness. the illumination is at its brightest when the power is switched ON. Each time this button is pressed, the brightness dim until the fourth press, after which the illumination returns the original brightness.

3. Numeric Button(0~10,10+)

These buttons are used to designate the track (tune) numbers for programming playback or " direct access " play.

4. REPEAT A-B Button

Used to activate repeat play of the section between two designated point (block repeat play).

5. INTRO A-B Button

When this button is pressed, the player automatically plays the first part of each track in the disc for 10 seconds.

Function introduction

6. CANCEL Button

In the stop mode, this button is used to cancel tunes which have been programmed.

7. PGM (Program) Button

Press this button in the stop mode, to activate the programming operation. When this button is pressed, the " PGM " indicator lights in the display of the unit. To release the programming mode, press this button again.

8. RANDOM Button

When this button is pressed, the player enters random play mode (tracks in the disc are selected and played in a random order). When pressed it again, random play is cancelled.

9. VOL Button

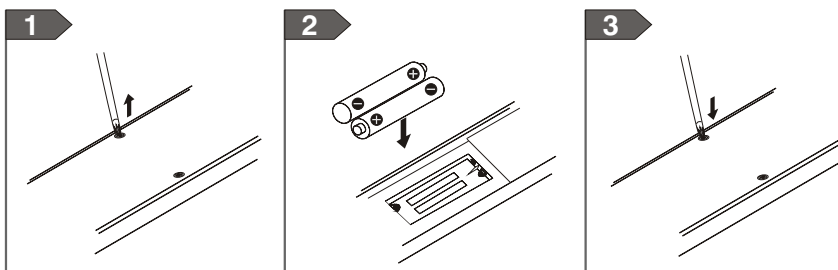
Press to adjust the ANALOG OUTPUT volume between 0 and 26 level.

10. SEARCH Buttons (◀◀ / ▶▶)

When one of these buttons was pressed during play or in the pause mode, the pickup is moved quickly in the forward or reverse direction while slightly muted sound is output (audible cueing).

Use the button to move the pickup in the forward direction, and the button to move it in the reverse direction.

Installing the remote controller batteries



1. To loose screw in the back of remote control, then open the cover.
2. Insert two AA (R6 or UM-3) batteries into the battery compartment. Carefully follow the polarity diagram (positive (+) and negative (-) symbols) inside the battery compartment.
3. Replace the cover, put screw in .

Precautions



■ Power Sources

This product should be operated only from the type of power source indicated on the marking label. If you are not sure of the type of power supply to your home, consult your product dealer or local power company. For products intended to operate from battery power, or other sources, refer to the operating instructions.



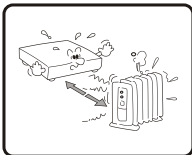
■ Object and Liquid Entry

Never push objects of any kind into this product through openings as they may touch dangerous voltage points or short-out parts that could result in a fire or electric shock. Never spill liquid of any kind on the product.



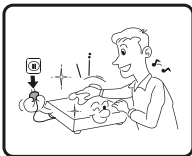
■ Servicing

Do not attempt to service this product yourself as opening or removing covers may expose you to dangerous voltage or other hazards. Refer all servicing to qualified service personnel.



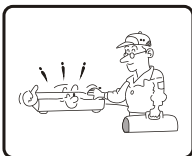
■ Heat

The product should be situated away from heat sources such as radiators, heat registers, stoves, or other products (including amplifiers) that produce heat.



■ Cleaning

Unplug this product from the wall outlet before cleaning. Do not use liquid cleaners or aerosol cleaners. Use a damp cloth for cleaning.



■ Safety Check

Upon completion of any service or repairs to this product, ask the service technician to perform safety checks to determine that the product is in proper operating condition.

Troubleshooting

Basic troubleshooting of a CD player is similar to troubleshooting any other electronic equipment.

Always check the most obvious possible causes first.

To give you a few ideas of what to look for, check the following:

Problem	Probable Cause	Remedy
No power when POWER is pressed	Power plug not inserted securely.	Plug in securely.
No playback when disc is loaded	Disc loaded upside down.	Load with label side up.
	Disc dirty.	Clean disc surface.
No sound(or too low level output)	Connections are made incorrectly or imperfectly.	Check connections.
	Misoperation of amplifier.	Check amplifier's control/switch setting.
Play starts when power is switched ON	A disc has been left in the player.	Remove the disc.
Program playback impossible	PGM button not pressed.	Press PGM so "PROGRAM" Indicator lights.
	PLAY(▶) button not pressed.	Press PLAY(▶) button.
Mistracking (sound jumping)	The unit is subject to vibrations or shocks.	Change the installation position.
	Disc dirty.	Clean disc surface.
HUM	Connection cord not connected securely.	Re-connect plug securely.
Remote control operation impossible	POWER switch of the unit is set to OFF.	Turn switch to ON.
	No battery installed in remote control unit.	Insert batteries.
	Batteries in the remote control unit are exhausted.	Replace with new ones.

Technical Specifications

1. Frequency Response : 10Hz-20kHz \pm 0.5dB
2. Audio Output Voltage : 2V \pm 1.6dB
3. Dynamic Range : \geq 100dB
4. S/N Ratio : $>$ 95dB
5. Frequency Distortion : $<$ 0.003%
6. Channel Separation : $>$ 90dB
7. Outer Dimension (W x H x D) : 430 x 125 x 330 (mm)
8. Weight : 9kg

NOTE :

Information in this document is subject to change without notice .

Vincent

Free Manuals Download Website

<http://myh66.com>

<http://usermanuals.us>

<http://www.somanuals.com>

<http://www.4manuals.cc>

<http://www.manual-lib.com>

<http://www.404manual.com>

<http://www.luxmanual.com>

<http://aubethermostatmanual.com>

Golf course search by state

<http://golfingnear.com>

Email search by domain

<http://emailbydomain.com>

Auto manuals search

<http://auto.somanuals.com>

TV manuals search

<http://tv.somanuals.com>