

Visioneer Strobe XP 200 USB Scanner Installation Guide

FOR WINDOWS



COPYRIGHT INFORMATION

Copyright © 2003 Visioneer, Inc.

Reproduction, adaptation, or translation without prior written permission is prohibited, except as allowed under the copyright laws.

The Visioneer brand name and logo are registered trademarks of Visioneer, Inc. The PaperPort brand name and logo are registered trademarks of ScanSoft, Inc.

Microsoft is a U.S. registered trademark of Microsoft Corporation. Windows is a trademark of Microsoft Corporation. TextBridge is a registered trademark of ScanSoft, Inc. ZyINDEX is a registered trademark of ZyLAB International, Inc. ZyINDEX toolkit portions, Copyright © 1990-1998, ZyLAB International, Inc. All Rights Reserved. All other products mentioned herein may be trademarks of their respective companies.

Information is subject to change without notice and does not represent a commitment on the part of Visioneer. The software described is furnished under a licensing agreement. The software may be used or copied only in accordance with the terms of such an agreement. It is against the law to copy the software on any medium except as specifically allowed in the licensing agreement. No part of this document may be reproduced or transmitted in any form or by any means, electronic or mechanical, including photocopying, recording, or information storage and retrieval systems, or translated to another language, for any purpose other than the licensee's personal use and as specifically allowed in the licensing agreement, without the express written permission of Visioneer.

Part Number: 05-0537-100

Restricted Rights Legend

Use, duplication, or disclosure is subject to restrictions as set forth in contract subdivision (c)(1)(ii) of the Rights in Technical Data and Computer Software Clause 52.227-FAR14. Material scanned by this product may be protected by governmental laws and other regulations, such as copyright laws. The customer is solely responsible for complying with all such laws and regulations.

Technical Support

Visit Visioneer's web site at www.visioneer.com for technical support including help during installation, driver updates, spare parts, and documentation.

Visioneer's Limited Product Warranty

If you find physical defects in the materials or the workmanship used in making the product described in this document, Visioneer will repair or (at its option) replace the product at no charge to you, provided you return it (postage prepaid, with proof of your purchase from the original reseller) during the **3-month period after the date of your original purchase of the product. Upon registration of the product with Visioneer at www.visioneer.com, the warranty is automatically extended for an additional 9 months for a total of 12 months.**

THIS IS VISIONEER'S ONLY WARRANTY AND YOUR EXCLUSIVE REMEDY CONCERNING THE PRODUCT, ALL OTHER REPRESENTATIONS, WARRANTIES OR CONDITIONS, EXPRESS OR IMPLIED, WRITTEN OR ORAL, INCLUDING ANY WARRANTY OF MERCHANTABILITY, FITNESS FOR A PARTICULAR PURPOSE OR NON-INFRINGEMENT, ARE EXPRESSLY EXCLUDED. AS A RESULT, EXCEPT AS SET OUT ABOVE, THE PRODUCT IS SOLD "AS IS" AND YOU ARE ASSUMING THE ENTIRE RISK AS TO THE PRODUCT'S SUITABILITY TO YOUR NEEDS, ITS QUALITY AND ITS PERFORMANCE.

IN NO EVENT WILL VISIONEER BE LIABLE FOR DIRECT, INDIRECT, SPECIAL, INCIDENTAL OR CONSEQUENTIAL DAMAGES RESULTING FROM ANY DEFECT IN THE PRODUCT OR FROM ITS USE, EVEN IF ADVISED OF THE POSSIBILITY OF SUCH DAMAGES.

All exclusions and limitations in this warranty are made only to the extent permitted by applicable law and shall be of no effect to the extent in conflict with the express requirements of applicable law.

FCC Radio Frequency Interference Statement

This equipment has been tested and found to comply with the limits for the class B digital device, pursuant to part 15 of the FCC Rules. These limits are designed to provide reasonable protection against interference in a residential installation. This equipment generates, uses and can radiate radio frequency energy and if not installed, and used in accordance with the instructions, may cause harmful interference to radio communications. However, there is no guarantee that interference will not occur in a particular installation. If this equipment does cause harmful interference to radio or television reception, which can be determined by turning the equipment off and on, the user is encouraged to try and correct the interference by one or more of the following measures:

- Reorient or relocate the receiving antenna.
- Increase the separation between the equipment and receiver.
- Connect the equipment into an outlet on a circuit different from that to which the receiver is connected.
- Consult the dealer or an experienced radio/TV technician for help.

This equipment has been certified to comply with the limits for a class B computing device, pursuant to FCC Rules. In order to maintain compliance with FCC regulations, shielded cables must be used with this equipment. Operation with non-approved equipment or unshielded cables is likely to result in interference to radio and TV reception. The user is cautioned that changes and modifications made to the equipment without the approval of manufacturer could void the user's authority to operate this equipment.

This device complies with part 15 of the FCC Rules. Operation is subject to the following two conditions: (1) This device may not cause harmful interference, and (2) this device must accept any interference received, including interference that may cause undesired operation.

TABLE OF CONTENTS

Welcome	1
What's in the Box	1
The Visioneer Strobe XP 200 Scanner	2
What You Need	3
Documentation	3
Chapter 1: Installing	4
Step 1: Install the Software	4
Step 2: Connect and Calibrate the Scanner	6
The Scanner Icon	8
Step 3: Print Guides and Install other Software	10
Chapter 2: Scanning	11
Paper Return Options	11
Scanner Settings	12
Scanning using the AutoScan Feature	14
Configuring the AutoScan Feature	15
About the Configuration Dialog Box	16
Selecting New Settings for AutoScan	18
Creating a New AutoScan Configuration	19
Editing AutoScan Configurations	21
Setting Preferences	22
Scanning from the PaperPort Software	24
Scanning from a Computer Running Windows 98, Me, or 2000	25
Scanning from a Computer Running Windows XP	30
Chapter 3: Maintenance	34
Recalibrating Your Scanner	34
Troubleshooting	37

Uninstalling Your Scanner	39
Step 1: Uninstalling the Visioneer OneTouch Software	39
Step 2: Uninstalling the PaperPort Software	40
Visioneer Strobe XP 200 Scanner Specifications	41

WELCOME

Congratulations on purchasing your Visioneer Strobe XP 200 USB scanner. With your scanner, you can quickly scan color and black and white documents to place their electronic images on your computer.

WHAT'S IN THE BOX

Before starting the installation, check the contents of the box to make sure that all parts are included. If any items are missing or damaged, contact the dealer where you purchased the scanner.



Visioneer Strobe XP 200 Scanner



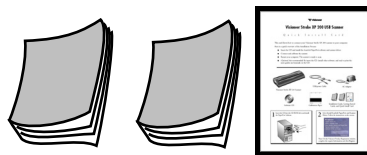
Software CD



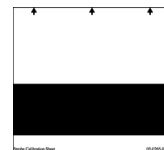
USB/power Cable



AC Adapter

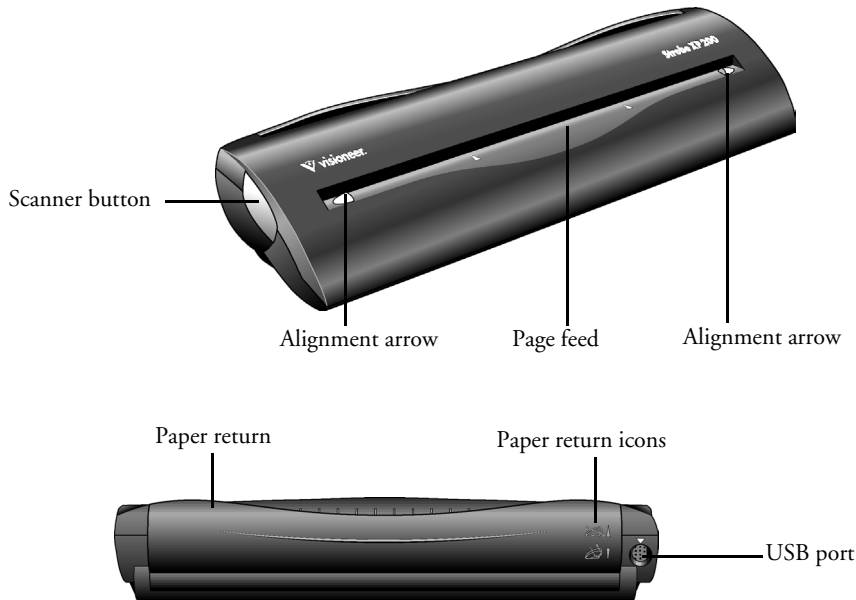


Installation Guide, Getting Started Guide, and Quick Install Card



Calibration Paper

THE VISIONEER STROBE XP 200 SCANNER



Scanner button—Opens a dialog box used to adjust scanner settings or cancel an in-process scan.

Alignment arrows—Show where to align the edges of the document you're scanning.

Page feed—Automatically feeds documents through the scanner when its sensors detect the presence of a document.

Paper return—Can be positioned to feed a document either straight through the scanner or returned to the front of the scanner.

Paper return icons—Show how to position the paper return: up to feed the document straight through the scanner, and down to return the document back towards you.

Universal Serial Bus (USB) port—Connects the scanner to the power cable and to a USB port on your computer.

WHAT YOU NEED

An IBM-compatible Pentium PC with:

- A CD-ROM drive
- An available Universal Serial Bus (USB) port
- Microsoft Windows operating system: 98, 2000, Me, or XP
- Available internal memory (RAM) as follows:
 - 64 megabytes (MB)
 - Windows XP—128 MB
- 200 MB of free hard disk space

A VGA or SVGA Monitor

Recommended settings for your monitor are as many colors as possible—High Color (16-bit), True Color (24-bit or 32-bit). Set the resolution to at least 800 by 600 pixels.

To set your monitor's colors and resolution, open the Windows Control Panel, double-click Display, and then click the Settings tab.

DOCUMENTATION

Your scanner is delivered with the following documentation:

- Quick Install Card—abbreviated installation instructions.
- Visioneer Strobe XP 200 Scanner Installation Guide—detailed installation, scanning, configuration, and maintenance information.
- Getting Started Guide—simplified installation instructions.
- ScanSoft PaperPort User's Guide—on the Installation CD; contains detailed feature and configuration information.
- Online Help

Installing

Installation is a quick, three-step process:

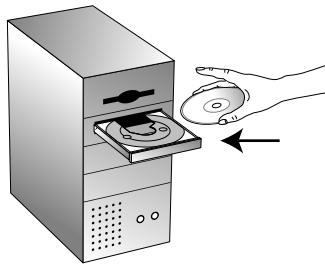
- Install the software
- Connect and calibrate the scanner
- Print guides and install other software from the CD

STEP 1: INSTALL THE SOFTWARE

Note: You must install the software *before* connecting the scanner to your computer. Otherwise, the correct driver software for your scanner will not be installed and it may not work properly.

To install the software:

1. Start Microsoft Windows and make sure no other applications are running.
2. Insert the CD into your computer's CD-ROM drive.



The CD automatically starts.

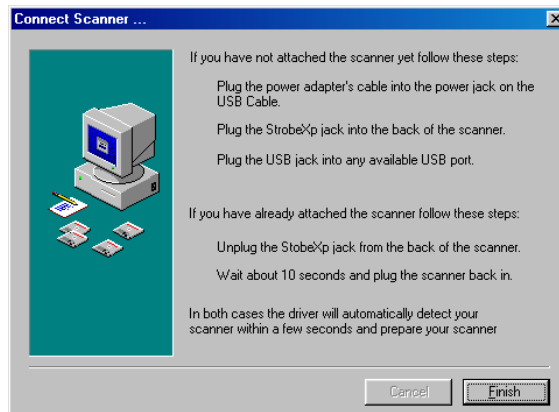
Note: If the CD does not start, check the following:

- Make sure the CD drive's door is completely shut.
 - Double-click the My Computer icon on your desktop. Double-click the icon for your CD-ROM drive. From the list of files on the CD, double-click the file named START32.EXE.
-



3. On the installation menu, select **Install ScanSoft PaperPort and Scanner Driver**.
4. Read the ScanSoft license agreement. If you accept the terms, select **I accept the terms in the license agreement**, and then click **Next**.
5. On the User Information window, accept the current values or enter new information, and then click **Next**.
6. On the Setup Type window, click **Next**.
7. Click **Install** to begin the installation.
8. On the PaperPort 8.0 Registration window, do one of the following:
 - Click **Via the Internet** and follow the registration instructions.
 - Click **Already registered/Don't register** to bypass registration.
 - Click **Remind me in 7 days**, and then click **OK** in response to the message window.
9. On the Visioneer License Agreement dialog box, read the license agreement. If you accept the terms, select **I agree**, and click **Next**.
10. On the Welcome window, click **Next** to start the installation.
11. If a message window indicates that the software has not passed Windows Logo testing, click **Continue Anyway** to proceed with the installation. The performance of your scanner will not be affected.

12. On the Visioneer Registration screen, complete the required information and click **Register**.



13. When you see the Connect Scanner window, do **NOT** click Finish. Leave the window open and proceed to the next section, "Step 2: Connect and Calibrate the Scanner".

STEP 2: CONNECT AND CALIBRATE THE SCANNER

The Visioneer Strobe XP 200 scanner connects to any available USB port. Check your computer's manual for USB port locations.

Note: You can connect the scanner to your computer while the computer is running. You do not have to shut down your computer.

To connect your Visioneer Strobe XP 200 scanner:

1. Plug the AC adaptor cable into the power jack on the USB/power cable, and then plug the AC adapter into an electrical outlet.
2. Plug the XP 200 connector on the USB/power cable into the port on the back of the scanner.
3. Plug the USB connector on the USB/power cable into any USB port on your computer.



The USB symbol identifies the location of the USB port on your computer. If the plug does not attach easily, make sure that you are plugging it in correctly. Do not force the plug into the connection.

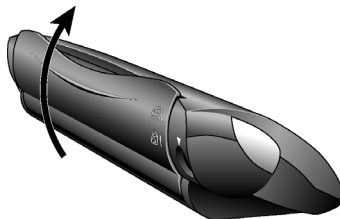
Note: You can also connect the scanner to a USB port on the computer's keyboard if it has one, or to a USB hub. If you use a USB hub, it must have its own power supply already plugged into an electrical outlet.

Your computer recognizes that a scanner has been plugged into the USB port and automatically configures its driver database with the appropriate software to run the scanner.

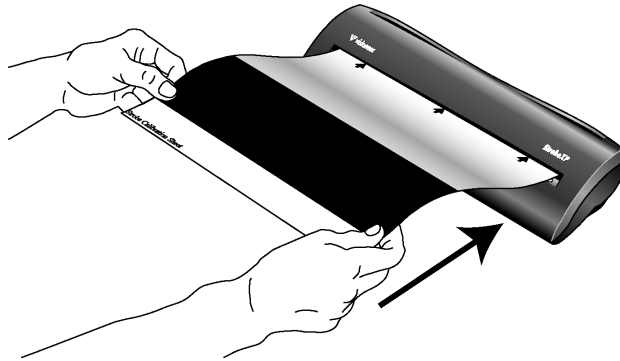
A calibration window opens so you can calibrate the scanner.

To calibrate the scanner:

1. Move the scanner's paper return to the Up position so the calibration paper will feed straight through the scanner.



2. Insert the calibration paper into the page feed, face up.
The scanner grabs the paper and feeds it through the scanner.



When calibration is finished, PaperPort completes its installation.

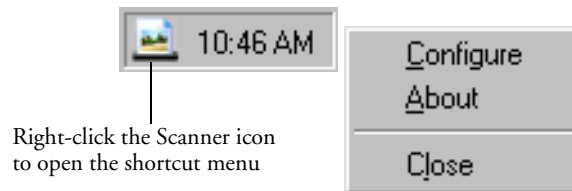
3. In the Install Completed window, click **Finish**.
4. Click the **Finish** button on the Connect Scanner window.
5. Remove the installation CD and restart your computer.

THE SCANNER ICON

After your computer restarts you will see a Scanner icon added to the right side of the Windows taskbar.



You can use the Scanner icon to access a dialog box to view and edit the scan settings for your scanner, and to view basic scanner information.



To open a dialog box to view and edit scanner settings:

1. Right-click the **Scanner** icon, and then select **Configure** from the shortcut menu.

The OneTouch Configuration dialog box opens, showing the current settings for the scanner's AutoScan feature. For detailed information on the dialog box and customizing scanner settings, see "Configuring the AutoScan Feature" on page 15 and "About the Configuration Dialog Box" on page 16.

2. Click **OK** to close the dialog box.

To view basic scanner information:

1. Right-click the **Scanner** icon, and then select **About** from the shortcut menu.

The Scanner Information window opens.



2. Click **OK** to close the window.

STEP 3: PRINT GUIDES AND INSTALL OTHER SOFTWARE

You can now install the other software from the CD.

1. After your computer and Windows restart, re-insert the CD into the CD-ROM drive.
2. On the Installation screen, click **Scanner Readme File**, **Scanner Installation Guide**, **PaperPort Installation Guide**, or **Additional Software and Guides**.



3. Follow the instructions on the screen to print guides and install software. When you're finished, remove the CD from the computer and store it in a safe place.

That's it! Your scanner is now ready to scan.

Scanning

This section describes how to scan with your Strobe XP 200 scanner. There are two methods available for scanning documents, you can use the scanner's AutoScan feature or scan from the PaperPort software. Both methods scan equally well, so use the one with appropriate options for the item you are scanning.

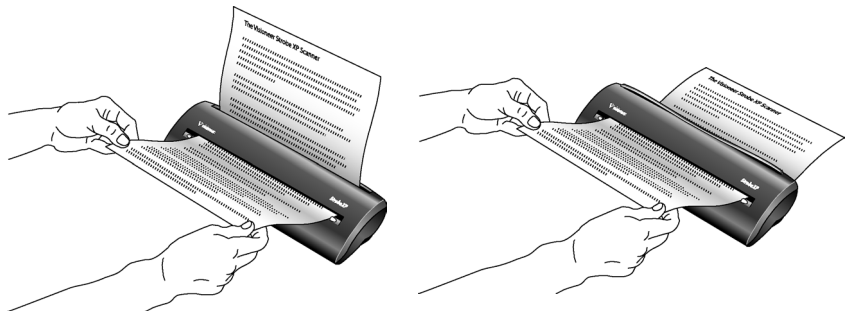
- **AutoScan**—Using the AutoScan feature, simply insert a document in the scanner and it is automatically scanned using predefined settings. See “Scanning using the AutoScan Feature” on page 14.
- **PaperPort software**—When you start a scan from the PaperPort software you can select scanning options and preview the scanned image before starting to scan a document. See “Scanning from the PaperPort Software” on page 24.



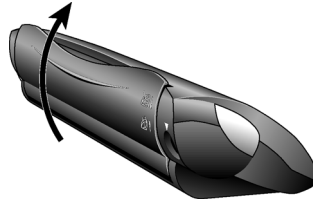
Note: Always remove any staples or paper clips from documents before inserting them into the scanner. Staples and paper clips can jam the feed mechanism and scratch the internal components.

PAPER RETURN OPTIONS

The position of the paper return determines the path of the scanned document. You can set the paper return to feed documents back toward you, or straight through the scanner.



To return scanned documents back toward you, leave the paper return in the Down position. To feed documents straight through the scanner, move the paper return into the Up position as shown below.

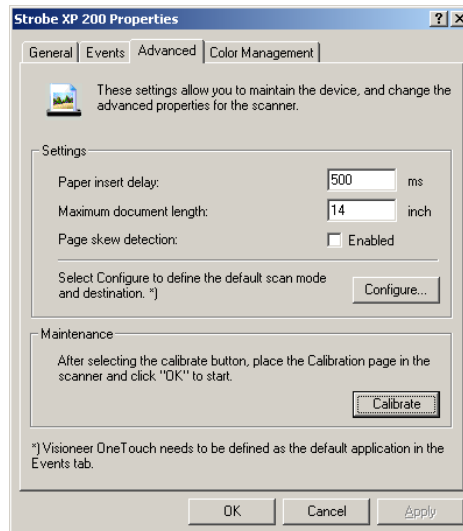


The paper return icons on the back of the scanner indicate the positioning of the paper return for each option.

Note: When scanning heavier paper that does not bend easily, position the paper return in the Up position so that the document feeds straight through the scanner.

SCANNER SETTINGS

The Strobe XP 200 Properties window contains advanced settings that apply to the scanner itself; regardless of the Windows operating system, or if you scan using the scanner button or the PaperPort software.



To set scanner settings:

1. Open the Strobe XP 200 Properties window as follow:

For Windows 98, 2000, or Me:

- On the Windows taskbar, click **Start**, point to **Settings**, and then click **Control Panel**.
- Double-click **Scanners and Cameras**.
- On the Scanners and Cameras Properties window, make sure the **Strobe XP 200** scanner is selected, and then click **Properties**.

For Windows XP:

- On the Windows taskbar, click **Start**, point to **Settings**, and then click **Control Panel**.
- Click **Printers and Other Hardware**.
- Click **Scanners and Cameras**.
- On the Scanners and Cameras window, right-click the **Strobe XP 200** icon, and select **Properties** from the menu.

2. On the Strobe XP 200 Properties window, select the **Advanced** tab.

3. In the Settings section, set the scanner options as follows:

Paper insert delay—Set the delay time from insertion of a document until the scanner starts to scan. The allowable values are 200 to 900 milliseconds. The default value is 500 milliseconds.

Maximum document length—Set the maximum length for scanned documents. The allowable values are 4 to 14 inches. The default value is 14 inches.

Page skew detection—When page skew detection is enabled, sensors in the scanner detect when a document is not correctly aligned and then eject the document.

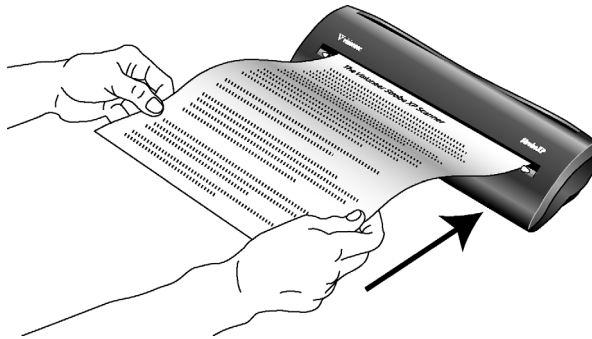
4. Click **OK** to save settings and close the Strobe XP 200 Properties window.

SCANNING USING THE AUTO SCAN FEATURE

When you insert an item into the scanner, it is automatically scanned and the image is sent to a software application on your computer.

To scan using AutoScan:

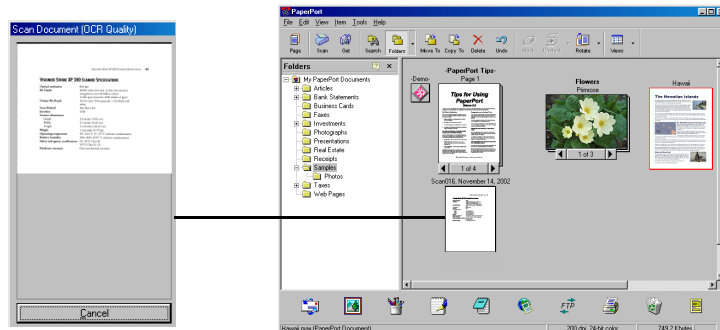
1. Align a document between the alignment arrows and insert it, face up, into the paper feed slot.



The scanner grabs the top edge of the paper and automatically begins to scan and feed the paper through the scanner.

The item is scanned using predefined settings, such as color for magazine articles or black and white for faxes. To change AutoScan settings, see “Configuring the AutoScan Feature” on page 15.

A scan progress window opens and then a thumbnail of the scanned image appears in the destination software. In the following example, the destination software is the PaperPort desktop.

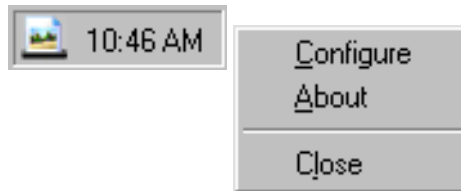


CONFIGURING THE AUTOSCAN FEATURE

When you first connect your scanner to a computer, the scanner's OneTouch software configures the AutoScan feature to scan in black and white and send the scanned image to the PaperPort desktop. You can change the AutoScan settings by selecting new options from the Configuration dialog box.

To open the Configuration dialog box:

- Use one of the following three methods.
 - On the Windows taskbar, click **Start**, point to **Programs**, point to **ScanSoft PaperPort 8.0**, and then click **OneTouch Configure**.
 - Right-click the Scanner icon on the right side of the Windows taskbar, and then click **Configure** from the shortcut menu.



- Press the button on the scanner itself.

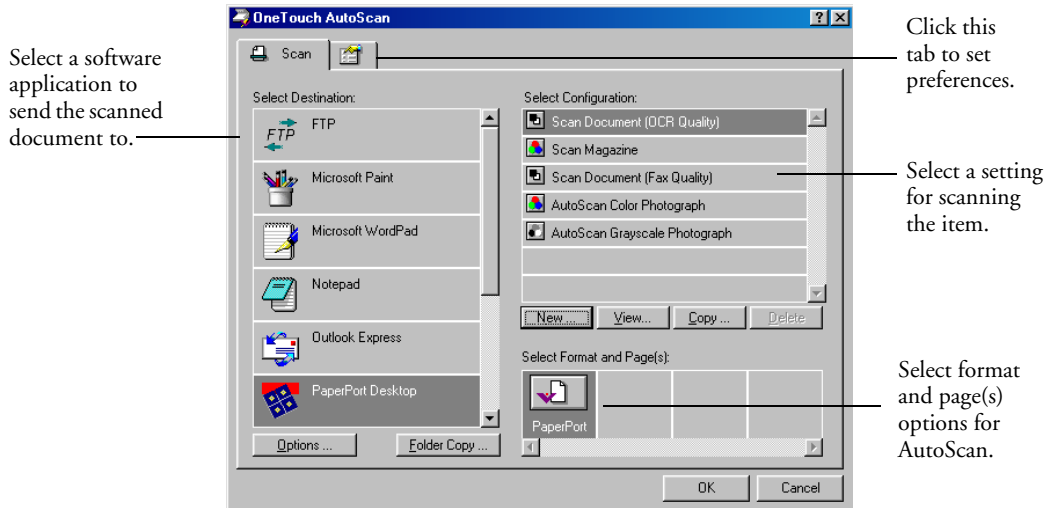


- If not already selected, click the Scan tab on the Configuration dialog box to display available scanning configurations.

ABOUT THE CONFIGURATION DIALOG BOX

The Configuration dialog box shows the current settings for AutoScan.

For example, the following figure shows the settings pre-selected when you first receive your scanner. AutoScan is set to scan the item with the configuration named Scan Document and then open the PaperPort desktop to display the scanned image. The Format and Page(s) option is set to scan in the PaperPort image format.



The icons next to each Configuration indicate the type of scanning:



Color Black and White Grayscale

The options on the Configuration dialog box are:

Select Destination—This is the list of applications that can open to display the scanned image. To configure the list, click the Preferences tab at the top of the dialog box and select the desired option. See “Setting Preferences” on page 22 for more information.

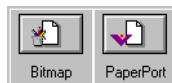
Select Configuration—This is the list of available AutoScan configurations. The configuration settings include: color, black and white, or grayscale, resolution in dots per inch (dpi), page size, contrast, and brightness. To see a selected configuration's settings, click its icon. Click the icon again to close the detailed information.

Click the icon of a selected configuration and show its settings.



You can also click the **View** button to see more detailed information about the selected configuration.

Select Format and Page(s)—This option sets the format for the scanned image. The formats are bitmap and PaperPort. Bitmaps are usually for photos or artwork. The bitmap format is available when you select a destination application other than PaperPort.



Options—The Options button opens a dialog box for selecting options related to the selected destination application for the scanned image. Each destination application has its own options dialog box.

Folder Copy—The Folder Copy button opens a dialog box for selecting the folder to use for storing copies of the scanned images.

SELECTING NEW SETTINGS FOR AUTO SCAN

You can select a new destination application, scanning configuration, and image format to set the AutoScan feature with your scanning preferences.

To select new settings for AutoScan:

1. From the Select Destination list, select the application where you want scanned images sent.

Note: If you select a word processing program such as Microsoft WordPad or Microsoft Word and a configuration for OCR, the text in scanned images is automatically converted to word processing text by the optical character recognition (OCR) software that you receive with the scanner. The converted text then appears in the selected destination application.

2. From Select Configuration list, select a scan configuration.



To scan in color: select one of the configurations indicated by the small color icon, such as the Scan Magazine configuration.

The configuration list is preset for the application you select in the Select Destination list. If you select a different application, the configurations are for that application.

3. Select a Format and Page(s) option.
4. Click **OK**.

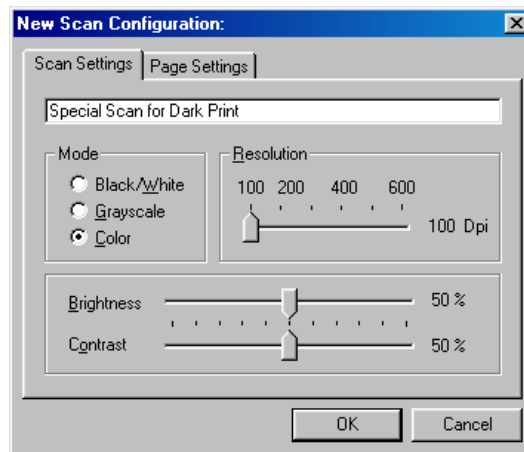
Now when you use the AutoScan feature, the document is scanned using the new configuration settings and displays the scanned image in the new destination application.

CREATING A NEW AUTOSCAN CONFIGURATION

You cannot change settings of the preset (default) configurations. To use AutoScan with settings other than those offered by the preset configurations, you must create a new configuration. You can do this either by copying a preset configuration and making the desired changes or by creating a new configuration from scratch.

To create a new configuration:

1. Scroll the applications in the Select Destination list and click the application for which you want to create a new configuration.
2. Do one of the following:
 - Click the **New** button.
 - Select a preset configuration and click the **Copy** button.
3. On the New Scan Configuration dialog box, type a name.
 - If you are copying from a preset configuration, leave the name as is or change it as required.



Note: If you select a printer or other device in the Select Destinations list, the dialog box may have an additional tab for setting specific options for the particular device.

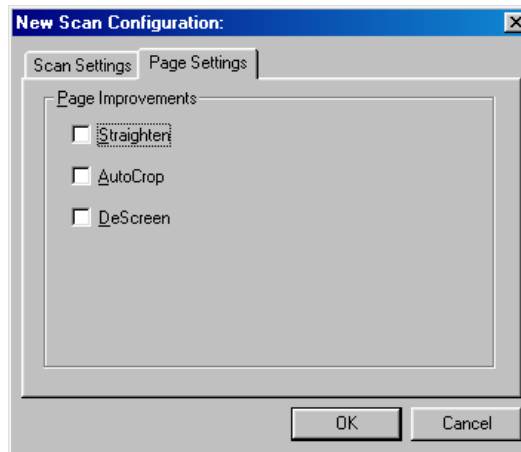
4. Select scan settings for the new configuration.

Mode—Select Black/White to scan in black and white. For example, letters and memos are usually scanned in black and white. Select Grayscale to scan items such as documents containing drawings or black and white photographs. The scanning produces an image in varying shades of gray. Select color to scan color photographs and other color items.

Resolution—Drag the slider to the right or left to adjust the dots per inch (dpi) of the resolution. The maximum resolution is 600 dpi; the minimum is 200 dpi. The higher the dpi setting, the sharper and clearer the scanned image. However, higher dpi settings take longer to scan and produce larger files for the scanned images.

Brightness and **Contrast**—Drag the sliders to the right or left to adjust the brightness and contrast of the scanned image. The Contrast setting does not apply to the Black/White mode.

5. Click the Page Settings tab to select page settings.

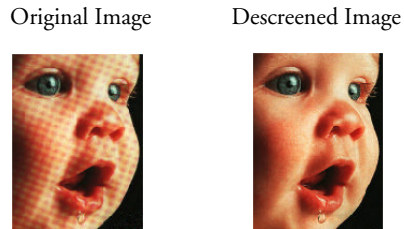


Straighten—This option automatically straightens the scanned image. This option overrides the AutoCrop option.

AutoCrop—This option lets the scanner automatically determine the size of the item being scanned. For example, if you scan an unusual page size, the scanner will automatically determine the size of the page.

DeScreen—Select this option when scanning a picture from a newspaper or magazine article, or other items that contain images with patterns or dots. These patterns and dots sometimes cause a wavy appearance for which the Descreen option can compensate.

The following example shows the effect of descreening a scanned image from a magazine article.



The scanning may slow down a bit when descreen is selected. The DeScreen setting does not apply to the Black/White mode and is available when scanning from Windows 98, 2000, and Me operating systems.

6. Click **OK** to save the new configuration.
7. To set the new configuration for use by the AutoScan feature, select the configuration and then click **OK**.

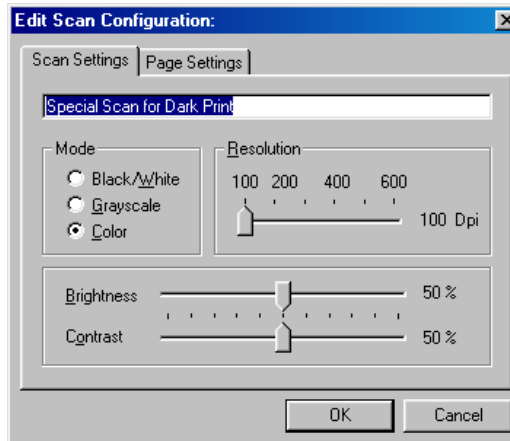
EDITING AUTOSCAN CONFIGURATIONS

You cannot edit the preset configurations; you can only edit those configurations that you created yourself.

To edit a configuration:

1. Open the Configuration dialog box.
2. Select the configuration you want to edit. The selection must be one of the configurations you created.
3. Click the **Edit** button.

The Edit Scan Configuration dialog box opens.



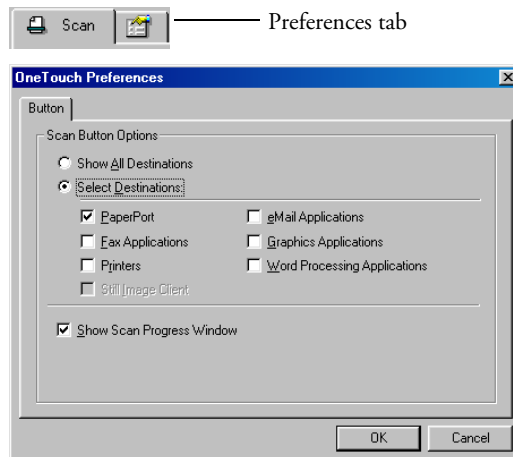
4. Edit the settings as required and click **OK**.
5. Click **OK** to close the Configuration dialog box.

SETTING PREFERENCES

You can set preferences for the Select Destination list and whether or not to display a Scan Progress window. The settings apply to the configurations you select for the AutoScan feature.

To set preferences:

1. Open the Configuration dialog box and click the Preferences tab.



- On the OneTouch Preferences dialog box, select desired preferences as described below.

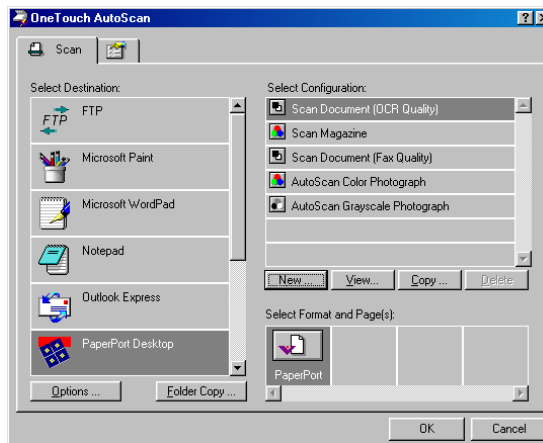
Show All Destinations—Select this option to automatically select all the destination application categories. The list of destination applications on the Configuration dialog box will include all the applications on your computer that fall into these categories.

Select Destinations—Select this option to individually choose the types of applications to include in the list of destination applications. Check the boxes for each type of application you want to include.

Show Scan Progress Window—Select this option to display a progress window of the document during scanning.

- Click **OK** to save the AutoScan preferences.

The following figure shows the Configuration dialog box with the Show All Destinations option selected, which is the default selection when the OneTouch AutoScan software is installed. The Select Destination list includes a complete list of applications on your computer that can receive your scanned images.



The list also includes printers and other devices connected to your computer so, for example, you can scan an item and have it printed immediately.

SCANNING FROM THE PAPERPORT SOFTWARE

Instead of using the AutoScan feature, you can scan from the PaperPort software application. This is particularly helpful when you're using PaperPort to file and save scanned items or if you want to preview an image and adjust scanning settings prior to scanning.

A Note About Your Scanner and the Twain standard: If your computer is running Windows 98, Me, or 2000, your scanner can use the Twain standard for scanning. Twain is a widely recognized procedure that computers use to receive images from scanners, digital cameras, and other digital devices. The PaperPort software application that you received with your scanner uses the Twain standard, and this guide shows how to scan with it. Many other graphics and imaging applications also comply with the Twain standard, so you can use your scanner with those applications too. To use your scanner with other Twain software, please refer to their user guides.

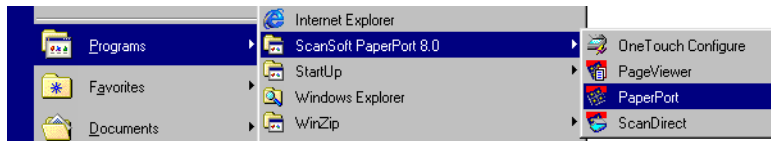
If your computer is running Windows XP: instead of using the Twain standard, your scanner uses Microsoft's Windows Image Application (WIA) standard for scanning, which is also available from other applications. Therefore, you can use your scanner with other applications on a computer running Windows XP too. See "Scanning from a Computer Running Windows XP" on page 30.

SCANNING FROM A COMPUTER RUNNING WINDOWS 98, ME, OR 2000

The instructions in this section are for computers running Windows 98, Me, or 2000. If your computer is running Windows XP, see “Scanning from a Computer Running Windows XP” on page 30.

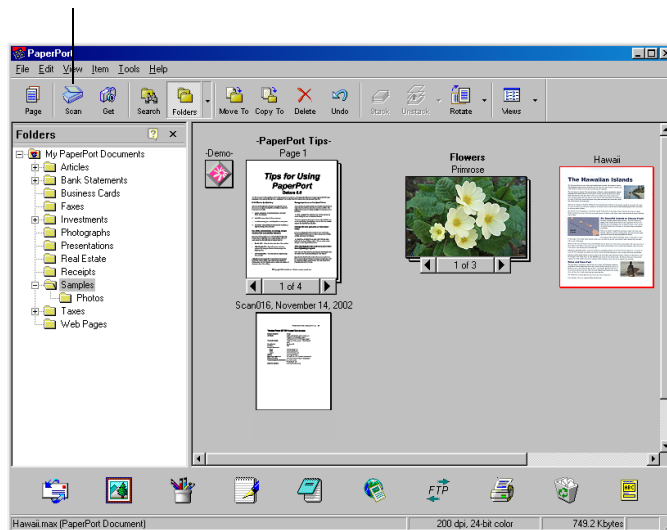
To scan an item from PaperPort:

1. On the Windows taskbar, click **Start**, point to **Programs**, point to **ScanSoft PaperPort 8.0**, and then click **PaperPort**.



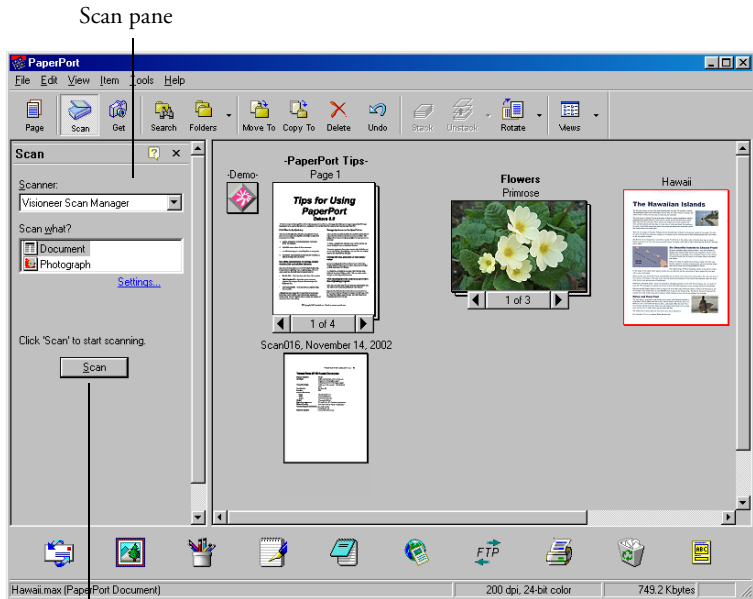
The PaperPort desktop opens.

Scan icon



2. Click the **Scan** icon on the PaperPort command bar.

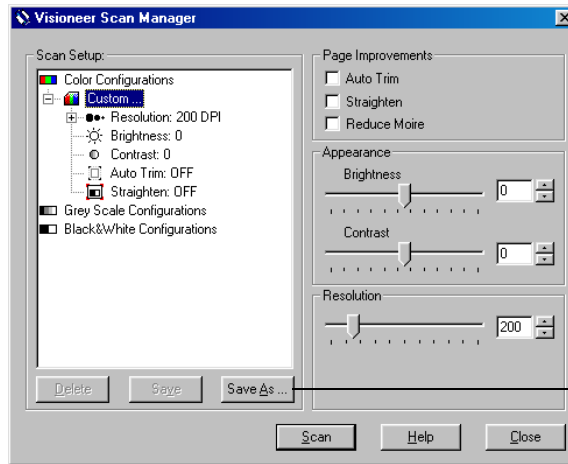
The Folders pane (which shows folders for organizing your scanned images) is replaced by the Scan pane.



Click the Scan button to open the Scan Manager

3. From the Scanner drop-down list, select **Visioneer Scan Manager**.
4. In the “Scan what?” section, choose to scan a **Document** or **Photograph**.
5. Click **Settings** to view, and optionally change, the format for the scanned item’s file name and the file type.
6. Click the **Scan** button in the Scan pane.

The Visioneer Scan Manager opens. Use the Visioneer Scan Manager to select scanning options and to start the scanner.



Click Save As to save scan settings for future use.

7. On the left side of the Visioneer Scan Manager, select a profile from the Scan Setup panel. For example, select Color Configurations and then select Custom to scan with the preset Custom scan settings.

The configuration settings appear as a list. Click the + (plus) sign to see the full list. Click the - (minus) sign to collapse the list.

The three configuration options for scanning are:

Color Configurations—Use this setting to scan magazine articles, photographs, and other color images in full color.

Gray Scale Configurations—Use this setting to scan high quality black and white images using up to 256 true shades of gray. You can also scan a color document to turn its colors into gray shades. The file size is about one third that of a color scan.

Black & White Configurations—This setting scans in black and white. The scanning pixels are all the same size and are either black or white. Use this setting for letters, memos, and other black and white material. The image files produced are the smallest file size for scanned items.

- Adjust settings by checking options and setting new values on the right-hand side of the Visioneer Scan Manager. The changes appear in the Scan Setup pane on the left.

Auto Trim—This option automatically eliminates areas outside the edges of a document. Select Auto Trim if the document you're scanning is smaller than a full-size page.

Straighten—This option automatically straightens the image of the scanned document.

Reduce Moire—Moire patterns are wavy, rippled lines that sometimes appear on the scanned images of photographs or illustrations, particularly newspaper and magazine illustrations. Select Reduce Moire to limit or eliminate moire patterns.

Brightness—To adjust the lightness and darkness of an image, drag the slider to the left and right.

Contrast—This option adjusts the difference between the lighter and darker shades in the images. Drag the slider to increase or decrease the contrast.

Resolution —This option determines the amount of detail you can see in the scanned image. The resolution setting for a scan is in dots-per-inch (dpi). The higher the resolution, the finer the details, however, higher dpi settings also take longer to scan and produce larger files sizes. Usually the higher resolution settings are used for precision work, such as photographs or fine artwork.

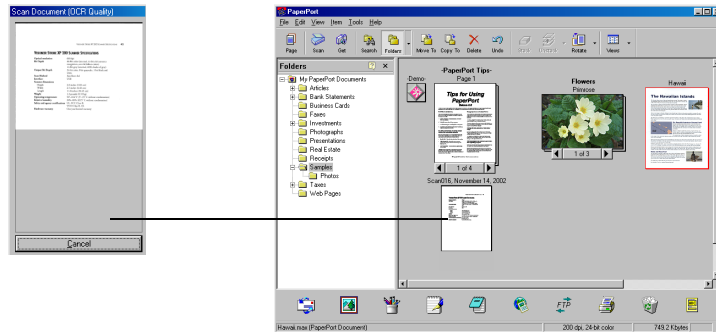
- When you're ready to scan, align the document between the alignment arrows and insert it, face up, into the paper feed.



- Click **Scan** on the Visioneer Scan Manager.

The scanner starts scanning and a progress box shows the image.

A thumbnail image appears on the PaperPort desktop.



You can now use the features of the PaperPort software to work with the scanned image. Refer to the *PaperPort User's Guide* on the CD that you received with the scanner.

CREATING A NEW VISIONEER SCAN MANAGER PROFILE

You cannot change the settings of the three preset (custom) profiles in the Visioneer Scan Manager. However you can create new profiles and save them in the Scan Setup list for future use.

To create a new profile:

1. On the Visioneer Scan Manager, select one of the three Custom profiles from the Scan Setup list (for example, Black&White Configurations>Custom).
2. Adjust the settings as required and then click the **Save As** button.
3. On the Save Profile window, enter a name for the profile.
4. Click **OK** to save the profile and add it to the Scan Setup list.

To change a profile you created:

1. Select your profile from the Scan Setup list.
2. Make changes to the profile as needed, and then click **Save**.

To delete a profile you created:

- Select your profile from the Scan Setup list, and then click **Delete**.

SCANNING FROM A COMPUTER RUNNING WINDOWS XP

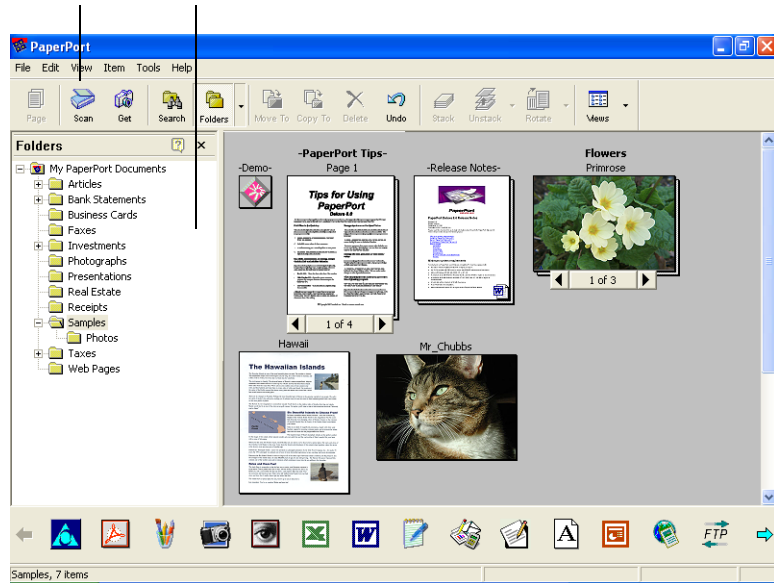
The instructions in this section are for computers running Windows XP. If your computer is running another version of Windows, see “Scanning from a Computer Running Windows 98, Me, or 2000” on page 25.

To scan an item:

1. On the Windows taskbar, click **Start**, point to **All Programs**, point to **ScanSoft PaperPort 8.0**, and then click **PaperPort**.

The PaperPort desktop opens.

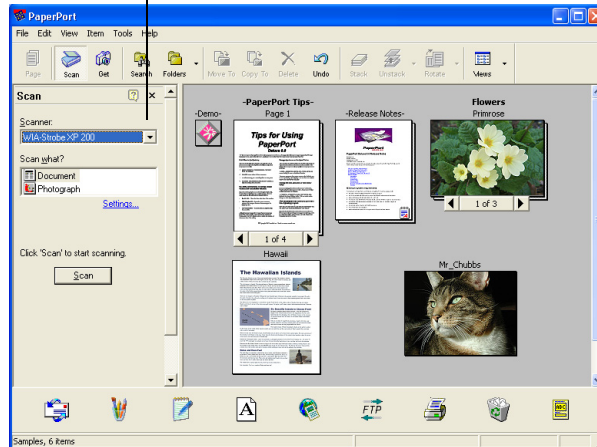
Scan icon Folders pane



2. Click the **Scan** icon on the PaperPort command bar.

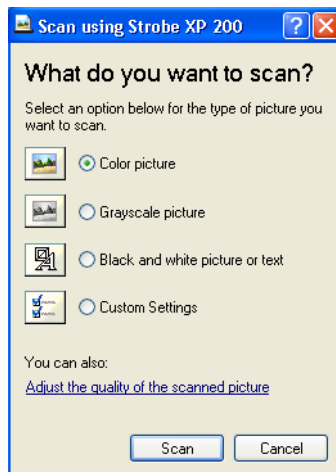
The Folders pane is replaced by the Scan pane.

Scan pane

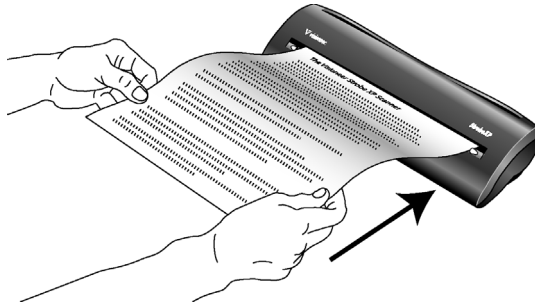


3. From the Scanner drop-down list, select **WIA Strobe XP 200**.
4. In the “Scan what?” section, choose to scan a **Document** or **Photograph**.
5. Click **Settings** to view, and optionally change, the format for the scanned item’s file name and the file type.
6. Click the **Scan** button in the Scan pane.

The Scan using Strobe XP 200 window opens. Use this window to select scanning options and start the scanner.



- Click the button most appropriate for the item you're scanning.
To scan with the Custom Settings option see the next section, "Fine Tuning Your Scans".
- Align the document between the alignment arrows and insert it, face up, into the paper feed.

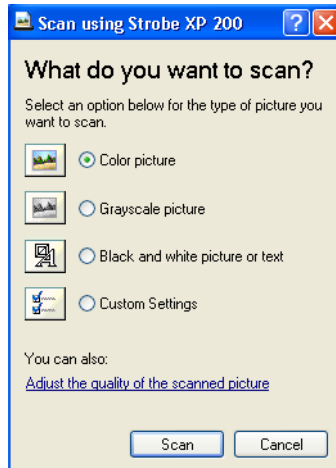


- Click the **Scan** button.
A thumbnail of the image opens on the PaperPort desktop.

FINE TUNING YOUR SCANS

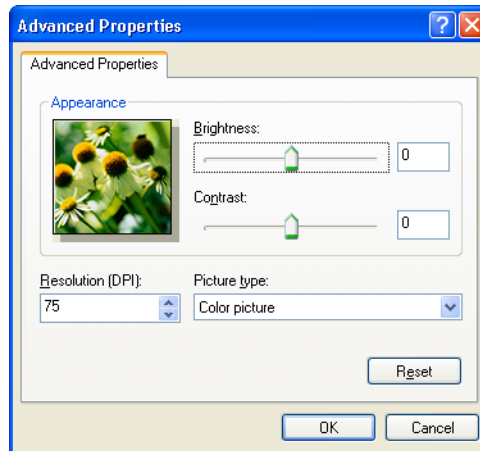
You can select new settings before you scan an item to fine tune exactly how you want to scan a particular item.

To select the scanner settings before you scan:



1. On the Scan using Strobe XP 200 window, click **Adjust the quality of the scanned picture.**

The Advanced Properties dialog box opens.



2. Select the options for scanning.

Brightness and **Contrast**—Drag the sliders to the right or left to adjust the brightness and contrast of the scanned image. The Contrast setting does not apply to the setting **Black and White picture or text.**

Resolution (DPI)—Click the drop-down list and choose the dots per inch (dpi) of the resolution. The maximum resolution is 600 dpi; the minimum is 100 dpi. The higher the dpi setting, the sharper and clearer the scanned image. However, higher dpi settings take longer to scan and produce larger files for the scanned images.

Picture type—Click the drop-down menu and choose the most appropriate type for the item you're scanning.

3. Click **OK.**

The Custom Settings button is now set to scan with the options you selected.

If you want to reset the settings and start over, click **Reset.**

Maintenance

This chapter contains information on recalibrating, troubleshooting, cleaning, uninstalling, and scanner specifications.

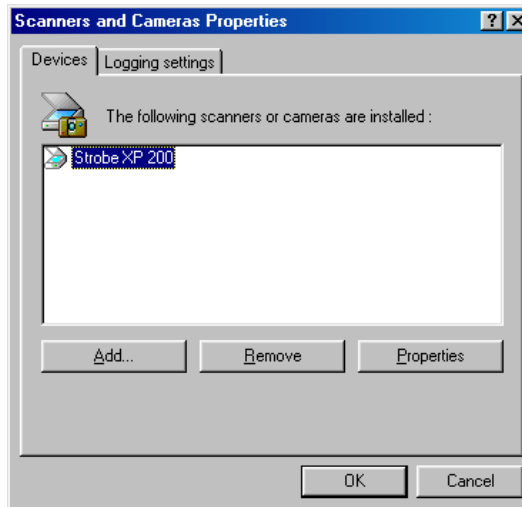
RECALIBRATING YOUR SCANNER

You calibrated your scanner during installation, but after many hours of use you may find that scanned images may not be as sharp and clear as when you began using the scanner. In that case, recalibration may solve the problem.

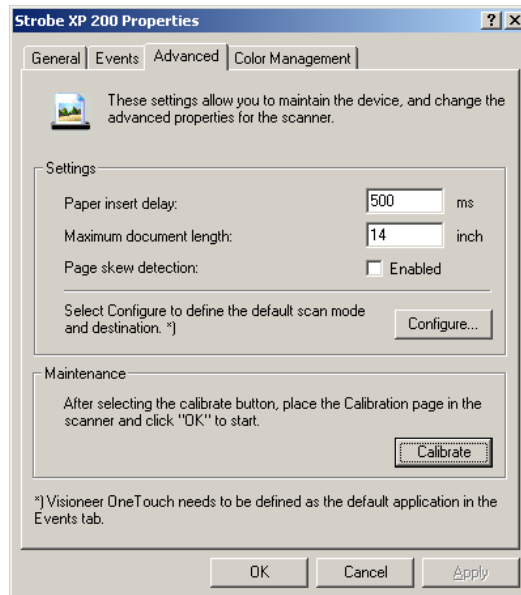
The procedure to calibrate your scanner is slightly different for Windows XP than for Windows 98, 2000, and Me. Make sure to use the correct procedure below.

To recalibrate your scanner for Windows 98, 2000, or Me:

1. On the Windows taskbar, click **Start**, point to **Settings**, and then click **Control Panel**.
2. Double-click **Scanners and Cameras**.



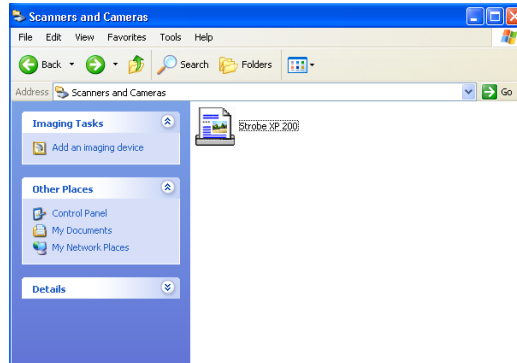
3. On the Scanners and Cameras Properties window, make sure the **Strobe XP 200** scanner is selected, and then click **Properties**.
4. On the Strobe XP 200 Properties window, select the **Advanced** tab.



5. Click **Calibrate** on the Strobe XP 200 Properties window.
6. Place the calibration paper in the scanner face up, and then click **OK** to start the calibration.
7. When calibration is finished, click **OK** to acknowledge and close the completion message.

To recalibrate your scanner for Windows XP:

1. On the Windows taskbar, click **Start**, point to **Settings**, and then click **Control Panel**.
2. On the Control Panel, click **Printers and Other Hardware**, and then click **Scanners and Cameras**.



3. On the Scanners and Cameras window, right-click the **Strobe XP 200** icon and select **Calibrate** from the menu.
4. Insert the calibration paper face up into the scanner, and then click **OK** to start the calibration.
5. When finished, click **OK** to acknowledge and close the message.

TROUBLESHOOTING

In addition to the troubleshooting information contained in this section, please see the Readme file in the PaperPort directory on your computer's hard drive. The Readme file contains additional information that may help you diagnose problems with the scanner.

If you try all the troubleshooting procedures described in this section and in the Readme file, and the scanner still has problems, you may have a malfunctioning scanner. Please see the technical support card that you received with your scanner for technical assistance telephone numbers. Also visit our web site at www.visioneer.com for additional technical information.

Problem: The scanner icon disappeared from the Windows taskbar.

Check for one of these possible problems:

- **Are the cables loose or not plugged in securely?** Inspect the cable connections. Make sure all cables are plugged in securely.
- **Is the AC adapter plugged in?** Make sure the AC adapter is securely plugged into a working electrical outlet.

Problem: The scanner won't scan. What's wrong?

Check for one of these possible problems:

- **Are the cables loose or not plugged in securely?** Inspect the cable connections. Make sure the cables are plugged in securely.
- **Did you restart the computer after installing the software?** If you didn't restart the computer, it may not have loaded all of the software files. Try restarting your computer.
- **Did you plug the scanner into a USB hub?** If you're using a USB hub to connect the scanner, the hub must have its own power supply. If the hub does not have its own power supply, plug the scanner into a different USB port on the computer.

- **Did you select another scanning source in the PaperPort Scan Pane?** If you use multiple devices with your computer, you may have selected another source for images. Start the PaperPort software and click the **Scan** icon and then make sure **Strobe XP 200** is selected as the scanner.

Problem: During installation I got the error message: PaperPort Installation is not complete. What do I do?

The installation procedure was not successful. You need to reinstall the PaperPort software.

Problem: I got the error message: PaperPort cannot allocate enough memory to perform internal critical operations. What do I do?

Close any other active applications so that additional memory is available. If you click Continue, PaperPort moves the file to the PaperPort data directory and renames the file with the prefix “bad”. This allows you to recover the file later.

To recover the file, you can import it into PaperPort by using the Import command in the File menu.

Problem: How do I uninstall PaperPort?

See the next section. Uninstalling does not delete your scanned items, and they remain in the PaperPort Data folder.

UNINSTALLING YOUR SCANNER

To uninstall the Visioneer Strobe XP 200 scanner, remove the scanner software first, and then remove PaperPort, or other scanner software.

STEP 1: UNINSTALLING THE VISIONEER ONETOUCH SOFTWARE

1. On the Windows taskbar, click **Start**, point to **Settings**, and then click **Control Panel**.
2. Double-click the **Add/Remove Programs** icon.
 - Windows 98, 98SE, or ME: The Add/Remove Programs Properties window opens. Select the Install/Uninstall tab.
 - Windows 2000 or XP: The Add or Remove Programs window opens. Make sure the Change or Remove option is selected.
3. From the list of programs, select **Visioneer Strobe XP 200**.
 - Windows 98, 98SE, and ME: Click the **Add/Remove** button.
 - Windows 2000 or XP: Click the **Change/Remove** button.
4. On the Select Uninstall Method window, make sure the **Automatic** option is selected, and then click **Next**.

Important: The Automatic option is selected by default and is recommended by Visioneer. The other options are for advanced users.

5. On the Perform Uninstall window, click **Finish**.

The Visioneer OneTouch software is uninstalled from your computer.
6. If the Remove Shared Components window opens, Visioneer recommends selecting **No to All**.
7. Unplug the USB cable from your computer and scanner.
8. Close all open windows and restart your computer.

STEP 2: UNINSTALLING THE PAPERPORT SOFTWARE

1. On the Windows taskbar, click **Start**, point to **Settings**, and then click **Control Panel**.

Windows XP: choose **Control Panel** from the Start menu.

2. Double-click the **Add/Remove Programs** icon.
 - Windows 98, 98SE, or ME: The Add/Remove Programs Properties window opens. Select the Install/Uninstall tab.
 - Windows 2000 or XP: The Add or Remove Programs window opens. Make sure the Change or Remove option is selected.
3. From the list of programs, select **PaperPort 8.0**.
 - Windows 98, 98SE, and ME: Click the **Add/Remove** button.
 - Windows 2000 or XP: Click the **Change/Remove** button.
4. On the PaperPort Uninstall window, read the Warning information and then click **Next**.
5. If the Remove Shared Files window opens, select **No to All**.

Important: Visioneer recommends choosing No to All. Removing shared files could cause other applications not to run correctly.

The PaperPort software is removed. A message appears offering to keep or remove your scanned image files stored on the computer.

6. Click the **No** to keep your image files, click **Yes** to remove the image files from your computer permanently.

Important: Files created by PaperPort are in a proprietary format (with a .max extension) and cannot be opened by other applications. To keep and view your scanned image files, use the PaperPort Viewer instead of the PaperPort application. Download the viewer from Visioneer's Web site at www.visioneer.com

7. If you see a message regarding missing software, click **OK**.
8. For Windows XP, click **Finish**.
9. Close all open windows and restart your computer.

VISIONEER STROBE XP 200 SCANNER SPECIFICATIONS

Optical resolution	600 dpi
Bit Depth	48-bit color (internal, 16-bit a/d converter recognition, over 68 billion colors) 16-bit gray (internal, 4096 shades of gray)
Output Bit Depth	24-bit color, 8-bit grayscale, 1-bit black and white
Scan Method	Fast Sheet fed
Interface	USB
Scanner dimensions	
Height	2.0 inches (5.08 cm)
Width	2.5 inches (6.40 cm)
Length	11.0 inches (28.45 cm)
Weight	1.3 pounds (0.59 kg)
Operating temperature	50°–104° F (5°–35° C without condensation)
Relative humidity	20%–80% (@35° C without condensation)
Safety and agency certifications	UL, FCC Class B, VCCI Class B, CE
Hardware warranty	One-year limited warranty

INDEX**A**

- AutoCrop
 - cropping images 20
- AutoScan 14
 - configuring 15

C

- calibration
 - during installation 8
 - recalibration 34
- CD-ROM drive 3
- components 2
- computer specifications 3
- Configuration dialog box 15, 16
- configuring AutoScan 15
 - editing 21
 - new configuration 19
 - new settings 18
- contrast 17
- cropping 20

D

- DeScreen 21
- destination application
 - OCR 18
- documentation 3

G

- gamma setting 21

I

- installation 4

M

- monitor 3

P

- paper return
 - icons 12
 - options 11

- PaperPort 24
 - desktop 25
 - Scan pane 26
- parts 1
- preferences
 - setting for AutoScan 22
 - tab 22

S

- scanner
 - components 2
 - connecting 6
 - icon 8
 - recalibration 34
 - specifications 41
 - troubleshooting 37
 - uninstall 39
- scanning 11
 - AutoScan 14
 - from PaperPort 24
 - Windows 98, Me, 2000 25
 - Windows XP 30
- setup 4
- specifications 41
 - computer 3
 - monitor 3
- system requirements 3

T

- troubleshooting 37
- Twain standard 24

U

- uninstall 39

V

- Visioneer Scan Manager 27
 - new profile 29

W

- WIA standard 24

Free Manuals Download Website

<http://myh66.com>

<http://usermanuals.us>

<http://www.somanuals.com>

<http://www.4manuals.cc>

<http://www.manual-lib.com>

<http://www.404manual.com>

<http://www.luxmanual.com>

<http://aubethermostatmanual.com>

Golf course search by state

<http://golfingnear.com>

Email search by domain

<http://emailbydomain.com>

Auto manuals search

<http://auto.somanuals.com>

TV manuals search

<http://tv.somanuals.com>