
VISTAQUEST
a clearer vision™
VQ2005



User's Manual

Download from [Www.Somanuals.com](http://www.Somanuals.com). All Manuals Search And Download.

For customers in North and South America

For customers in USA

This device complies with Part 15 of the FCC rules. Operation is subject to the following two conditions:



(1) This device may not cause harmful interference.

(2) This device must accept any interference received, including that may cause undesired operation.

For customers in Canada

This Class B digital apparatus meets all requirements of the Canadian Interference-Causing Equipment Regulations.

For customers in Europe



“CE” mark indicates that this product complies with the European requirements for safety, health, environment and customer protection. “CE” mark

○ Table of Contents

Chapter 1: Welcome to the Mini Capture	P3
1.1 Mini Capture Digital Camera Package Contents	
1.2 Minimum System Requirements	
1.3 A Quick Look at the Mini Capture	
Chapter 2: Getting Started	P5
2.1 Battery Installation	
2.2 Turning the Power On/Off	
2.3 Taking a Picture	
2.4 Recording a Video	
2.5 Inserting & Removing an SD Memory Card (Not included)	
2.6 SD Memory Card Storage Capacity	

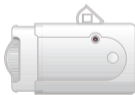
● Table of Contents

Chapter 3: Camera Settings & Features	P13
3.1 Status Display	
3.2 Camera Settings	
3.3 Deleting Images	
3.4 Low Light Warning	
3.5 Memory Full Warning	
Chapter 4: Software Installation	P21
4.1 Software Installation	
Chapter 5: Connecting the Camera & Downloading Images or videos	P25
5.1 Connecting the Mini Capture	
5.2 Downloading pictures & videos to your computer	
Chapter 6: Technical Specifications	P27
Chapter 7: Troubleshooting	P32

Chapter 1

Welcome to the Mini Capture

Thank you for purchasing the Mini Capture digital camera. The Mini Capture takes high quality digital images in a convenient, easy-to-carry size to ensure that you'll always be ready to take pictures at any moment. We hope you'll enjoy using the camera with family and friends everywhere. Before you start to use your camera, please refer to this User's Guide to become familiar with the features and functions of the Mini Capture digital camera.



● 1.1 Mini Capture Digital Camera Package Contents

Before using the camera, please check to ensure that all the items have been included in your package:

- 1 - Mini Capture Camera
- 1 - USB 1.1 Cable
- 1 - AAA Alkaline Battery
- 1 - Quick Start Guide
- 1 - Mini Capture Camera CD-ROM (containing Camera Driver & user's manual)

Important! If any of the package contents listed above are missing, please contact the retailer where you purchased the product to exchange the package.

1.2 Minimum System Requirements

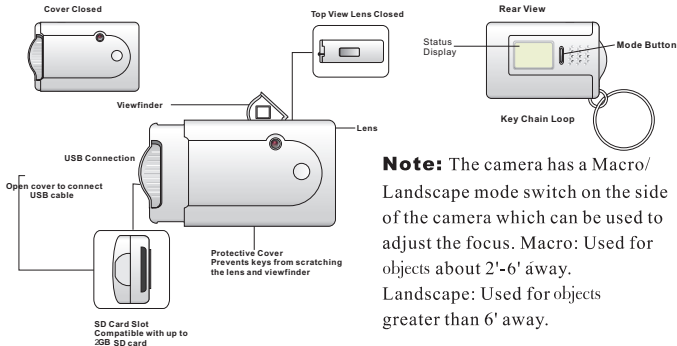
PC Requirements

- 300 MHz Intel® Pentium II®, AMD® K-6 or higher
- 200 MB free hard disk space
- 32 MB RAM or better
- Available USB Port
- Display adapter with screen resolution at least 800x600 in 24-bit color
- 4x CD-ROM drive or better
- Microsoft® Windows® 98SE/Me/2000/XP/Vista

Mac Requirements

- Power Macintosh® 266 MHz or later
- 6MB free hard disk space
- 8MB RAM or better
- Available USB port
- 256-color display adaptor
- 4x CD-ROM drive or better
- Macintosh® OS 9.2 or later
- QuickTime™ 4.0 or later

1.3 A Quick Look at the Mini Capture



Note: The camera has a Macro/Landscape mode switch on the side of the camera which can be used to adjust the focus. Macro: Used for objects about 2'-6' away. Landscape: Used for objects greater than 6' away.

Chapter 2

Getting Started



● 2.1 Battery Installation

1. Hold down the viewfinder on the top of the camera and slide the camera cover off.
2. Insert a single AAA battery inside the battery compartment. Make sure that you insert the battery with the correct orientation as indicated by the markings inside the battery compartment.
3. Hold down the viewfinder and slide the camera cover back to insert the camera into its cover.



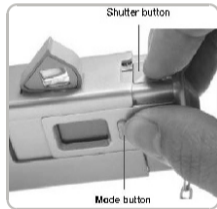
Important! When using only the camera's internal memory, make sure to always have enough battery power since the camera utilizes SDRAM, which is volatile memory. If there is not enough power or the battery is removed for longer than 3 minutes, the pictures will be lost from the camera. Make sure to always download your pictures as soon as possible or replace the battery with a new one after you have downloaded the pictures if the batteries are low.

WARNING!

The camera must be power off before taking out the battery. Otherwise all data in the camera will be lost.

2.2 Turning the Power On/Off

1. Slide the camera cover open.
2. The viewfinder will pop up from the top of the camera.
3. To turn the camera on: Press and hold the Mode button for three seconds. The LCD statusdisplay will turn on.
4. To turn the camera off: Press and hold the Mode button for three seconds. The LCD statusdisplay will turn off.



● 2.3 Taking a Picture

To take pictures with your camera, make sure the camera is powered on and the camera is in the correct mode (i.e. picture taking mode if you want to take pictures, video mode if you want to record a video). Also there are no obstructions covering the front of the camera lens.

Frame your subject through the viewfinder and press the Shutter button until you hear an audible beep. Your camera takes about two seconds to process the image information. Continue to hold down the shutter button until you hear a second beep. Try and hold the camera steady while you take the picture. The picture counter on the LCD status will increase by 1, indicating that you took a picture. (If taking picture in Burst mode, the picture counter on the LCD status will increase by 3.)

When saving a picture or a video clip with an SD memory card installed, the LCD will indicate the camera is saving the picture or video by displaying a bar rotating clockwise in a circular pattern.

Download from [Www.Somanuals.com](http://www.Somanuals.com). All Manuals Search And Download.

● 2.4 Recording a Video

Make sure the video clip mode “” is visible on the LCD screen before you record a video. To switch to Video Clip mode, please refer to the Camera Settings section.

Press the Shutter button to start recording a video and press the Shutter button again to stop recording. The Mini Capture can record individual video clips up to a maximum of 2.4MBs in size.

● 2.5 Inserting & Removing an SD Memory Card (Not included)

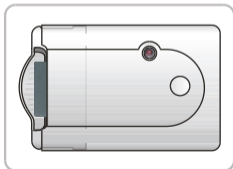
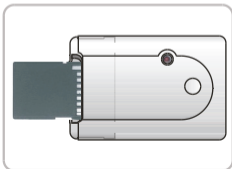
To insert: Slide the SD memory card into the SD slot until the memory card clicks into position. The SD memory card can only fit in one way. Do not force the memory card into the SD slot. If you cannot insert the SD memory card, make sure you have the SD memory card properly oriented and then try inserting it again.

To remove: Push the SD memory card into the camera until you hear a click and then pull the SD card out from the slot.

Caution! When the SD card is saving or transferring data, never perform the following actions:

- Removing the SD memory card
- Turning off the camera power
- Subjecting the camera to strong vibration or shock

Caution! Prohibit Insert and plug SD card out under power on



2.6 SD Memory Card Storage Capacity

The Mini Capture can utilize removable Secure Digital (SD) memory Cards (not included) up to 2 GB in capacity. The use of a higher capacity SD memory card allows you to take more pictures.

An SD memory card is not included with this camera. You can purchase an SD memory card at a local computer or electronics store .

Picture Capacity

Table of Approximate Picture Capacity (# of JPEG)*			
Secure Digital Card Capacity (MB)	High Resolution Mode(1600x1200)	Normal Resolution Mode(1280x1024)	Low Resolution Mode(640x480)
On-Board Memory (4MB)	26	34	78

*Picture capacities are approximate and are scene dependent. Less complex scenes will allow more pictures to be taken with the camera.

Video Capacity

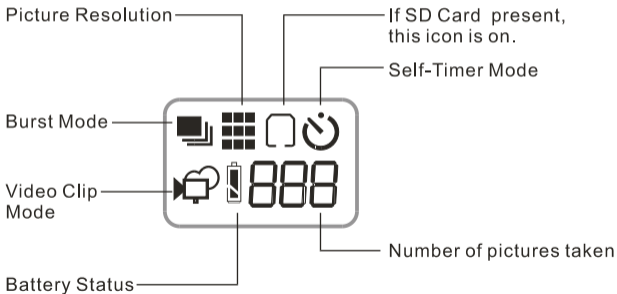
The Mini Capture can record individual video clips (MPEG) up to a maximum of 2.4MBs in size. For example, if you have inserted a 32 MB SD memory card, you will be able to record up to thirteen 2.4MB video clips.

Chapter 3

Camera Settings & Features



● 3.1 Status Display



3.2 Camera Settings

To change the camera modes, press the Mode button. Each press of the Mode button will cycle to a different mode, indicated by a blinking icon. Each press of the Mode button changes the mode according to this cycle:



1. Resolutions



Low Resolution (640x480)

Good for e-mailing or posting pictures on a webpage



Normal - (1280x1024)

[Default setting] Good for printing pictures up to 4" x 6"



High Resolution - (1600x1200)

Good for printing pictures up to 5" x 7"



Video Clip Mode

Can record short videos clips at 320x240 resolution

2. Self-Timer



Self-Timer Mode

Takes pictures after a 10 seconds delay

If the Self-Timer mode is selected, a 10-second countdown will begin when you press the Shutter button to take a picture. You will hear the camera beep continuously until the picture is taken.

3. Burst Mode



Burst Mode

Shoots three continuous pictures while the shutter button is pressed down Burst mode only works in Low resolutions. If you attempt to set the Burst mode with the High resolution setting, it will automatically take the picture in Normal resolution.

4. Delete Mode

dEL Delete the last captured picture or video

dEL Deletes the last captured picture or video taken with the camera

To delete the last captured picture or recorded video, change the mode on the camera until you see “DEL” appear on the LCD status display. Press the Shutter button while “DEL” is blinking to delete the last picture or video that was captured.

5. Format Mode



SD Card inserted

Appears when an SD memory card is in the camera




Format SD Card

Appears when an SD memory card is in the camera and in the format SD card mode



Format On-Board Memory

Appears when using the On-Board memory and in the format mode

If an SD Card is inserted in the camera, “  ” appears in the setting mode and all your pictures and videos will be saved to the SD Card. If no SD card is inserted in the camera, pictures and videos will be saved to the camera's internal On-Board Memory.

Note: If the current selected mode blinks for three seconds and you do not press any buttons, the camera will automatically revert back to the previous mode/settings.

6. Battery indicator



Battery Full

The battery is full and the camera can be used



Battery Low

● 3.3 Deleting Images

You can delete the last picture or video taken with the camera or format the memory to delete all the images from the camera at once.

To delete the last picture or video

1. Keep pressing the Mode button until it cycles to the “Delete mode” indicated by: dEL
2. Press the Shutter button to delete the last image or video taken with the camera. The last picture will be deleted from the camera's memory or SD memory card (if an SD memory card is inserted in the camera).
3. If you do not want to delete the last picture or video, press the Mode button again which will cancel this operation.

To format the On-Board Memory

1. Keep pressing the Mode button until it cycles to the “Format mode” indicated by: F
2. Press the Shutter button. You will be prompted with a blinking number of pictures taken “000”. If you are certain that you want to format the On-Board memory and delete all the pictures from the camera, press the Shutter button.
3. If you do not want to format and delete all the pictures from the camera, press the Mode button again which will cancel this operation , Or don't operate camera in 5 seconds, the blinking number will stop automatically, the camera

To format the SD memory card

1. Ensure that your SD memory card is fully inserted in the camera.
2. Keep pressing the Mode button until it cycles to the “Format mode” indicated by: **[F]**
3. Press the Shutter button. You will be prompted with a blinking number of pictures taken “**228**”. If you are certain that you want to format the SD memory card and delete all the pictures from the SD memory card, press the Shutter button.
4. If you do not want to format and delete all the pictures from the SD memory card, press the Mode button again which will cancel this operation , Or don't operate camera in 5 seconds, the blinking number will stop automatically, the camera is not format.

Note: The camera does not allow you to choose specific images to delete. You can only delete the last image taken or all of the images.

● 3.4 Low Light Warning

If you take a picture in a low lighting condition, your camera will give you a low light warning “beep” to prompt you that the lighting condition may be too dark. Try taking the picture where there is more light, otherwise your camera will not take picture.

● 3.5 Memory Full Warning

If there is not enough remaining memory to store another picture or video, your camera will give you a memory full warning by beeping and displaying FUL to prompt that the memory is full and the picture or video cannot be saved. Download your pictures to the computer first and then erase the camera memory to take more pictures or videos.

Chapter 4

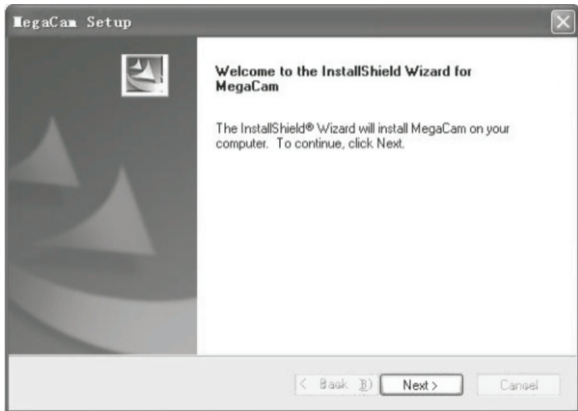
Software Installation



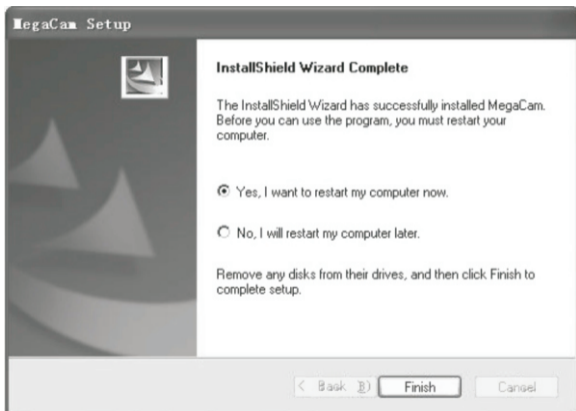
● 4.1 Software Installation

- ① Put the CD into the CD-ROM, Open "DRIVER" file, and double click equip file "MegaCam_Driver.exe", the system will set up driver software automatically. When the system pop up below interface,
- ② Click "next" with left button, system continue running, when the system pop up below interface, click "finish" with left button, restart the computer, camera drive software has been set up, connect camera and the computer with USB cable, then can use it freely.

①



②



Chapter 5

Connecting the Camera & Downloading Images or Videos



● 5.1 Connecting the Mini Capture

Plug the USB cable into the camera and any available USB port on your computer. Your computer should recognize a new device being installed. If the camera is properly detected, the camera will display “USB” on the LCD status display.

If your computer does not recognize a new device when the camera is connected, please install driver of the mini camera .

● 5.2 Downloading pictures & videos to your computer

Download pictures & videos with the USB cable

1. Make sure your camera is connected and powered on.
2. Double-click on the My Computer icon on your desktop and locate the removable disk.
3. Copy the images from the camera to a folder on your computer, such as My Pictures or the Desktop.

Chapter 6

Technical Specifications



Sensor

Sensor Resolution : 1.3 Megapixel (1280 x 1024)

Sensor Type: CMOS, 1/3" Optical format

Shutter: Electronic

Lens

Aperture: F/2.8

Focus: Fixed f=6.56 mm

Focus Distance: 2 feet to infinity

View Angle: 52° Diagonal

Physical Dimensions and Weight

Dimensions: 38mm (H) x 60mm (W) x 20mm (D)

1.5" (H) x 2.4" (W) x .79" (D)

Weight: 85 g (3 oz.) - Including Battery

Still Image Capture

Color Depth: 24 bit true color

White Balance: Auto

File Format: JPEG

Resolutions: 1600x1200, 1280x1024, 640x480

Compression Ratio: 16:1

Exposure Control: Auto

PC Video Capture

Color Depth: 24 bit true color

Exposure Control: Auto

White Balance: Auto

Resolutions: 320x240

Video Frame Rate: 6fps@320x240

Environmental (Ambient)

Operating Temperature: -5° to 40° C (23° to 104° F)

Storage Temperature: -5° to 40° C (23° to 104° F)

Operating Humidity: 15-90% RH

Storage Humidity: 15-90% RH

Chapter 7

Troubleshooting



Problem: The pictures are dark or blurry.

Solution: The camera does not have a built-in flash. Make sure to take pictures where there is adequate lighting. Hold the camera steady to prevent the camera from moving when taking a picture. Ensure that the macro/landscape switch on the side of the camera is in the correct position.

Problem: The pictures are lost from the camera when the battery is discharged or low.

Solution: When using only the camera's internal memory, make sure to always have enough battery power since the camera utilizes SDRAM, which is volatile memory. If there is not enough power or the battery is removed for longer than 3 seconds, the pictures will be lost from the camera. Make sure to always download your pictures as soon as possible or replace the battery with a new one after you have downloaded the pictures if the batteries are low.

Problem: The camera doesn't turn on or the battery drains too quickly.

Solution: Make sure that you press and hold the Mode button down for 3 seconds to turn the camera on. Also, make sure that the AAA battery being used is new. The camera utilizes SDRAM, which requires constant power to store the pictures in the camera's internal On-Board memory. When not taking pictures, remove the AAA battery from the camera to prevent the battery from draining. Note that if you remove the battery for more than 3 seconds, the pictures in the camera will be lost.

Problem: The SD memory card is not detected by the camera.

Solution: The SD memory card brand may not be compatible or the SD memory card may be damaged. Make sure that you have inserted the SD memory card completely into the camera and in the proper direction. If this doesn't help, try using a different SD memory card.



Download from [Www.Somanuals.com](http://www.Somanuals.com). All Manuals Search And Download.

Free Manuals Download Website

<http://myh66.com>

<http://usermanuals.us>

<http://www.somanuals.com>

<http://www.4manuals.cc>

<http://www.manual-lib.com>

<http://www.404manual.com>

<http://www.luxmanual.com>

<http://aubethermostatmanual.com>

Golf course search by state

<http://golfingnear.com>

Email search by domain

<http://emailbydomain.com>

Auto manuals search

<http://auto.somanuals.com>

TV manuals search

<http://tv.somanuals.com>