
Vivitar®

Vivicam 3350B User Manual



English

Rev 041110 TP

Contents

1. Introduction	1
1.1. Overview	1
1.2. Warnings and Precautions	1
1.3. Package Contents	3
1.4. System Requirements	4
1.5. Vivicam 3350B Features	5
2. Installing the Battery	6
3. Installing the Software	8
3.1. Twain Driver	8
3.2. Ulead® Photo Explorer 8.0 SE	9
3.3. Ulead® COOL 360™	9
3.4. In-A-Flash LE	9
3.5. Adobe® Reader® 6.0	10
3.6. User Manual	10
4. Capturing Images	11
4.1. Power On the Camera	11
4.2. Capture an Image	12
4.3. Camera Information Display	13
4.4. Power-Off the Camera	14
4.5. Self-Timer	14
4.6. Continuous Capture	14

4.7.	Image Resolution	15
4.8.	AVI Capture	16
4.9.	Light Frequency	16
4.10.	Deleting Images	17
4.10.1.	Delete the Last Image	17
4.10.2.	Delete All Images	17
4.11.	Techniques for Capturing the Best Images	18
5.	Downloading Images to Your PC	19
5.1.	Transfer Images to your PC	19
5.2.	Transferring Images to a Twain-aware application	21
5.2.1.	Transferring your Images to PhotoExplorer	21
6.	PC/Web Camera Video Function	23
6.1.	Using the ViviCam 3350B in Video Mode	23
6.2.	Using the ViviCam 3350B with AMCAP	24
6.3.	Using the ViviCam 3350B with NetMeeting	24
6.4.	Using the ViviCam 3350B with Movie Maker on Windows XP	25
7.	Specifications	26

1.0 Introduction -

1.1 Overview -

Thank you for purchasing a Vivicam 3350B digital camera. It can capture digital images, short video-clips (continuous shooting mode), and it can also serve as a PC/Web camera. The V3350B is equipped with 8 MB of memory to store your images and movie clips. You may download your images and movie clips to your computer using the USB cable and included software.

1.2 Warnings and Precautions -

1.2.1 FCC STATEMENT -

This device complies with Part 15 of the FCC Rules. Operation is subject to the following two conditions:

1. This device may not cause harmful interference, and
2. This device must accept any interference received, including interference that may cause undesired operation.

Note: This equipment has been tested and found to comply with the limits for Class B digital devices, pursuant to Part 15 of the FCC rules. These limits are designed to provide reasonable protection against harmful interference in a residential installation. This equipment generates, uses and can radiate radio frequency energy and, if not installed and used in accordance with the instructions, may cause harmful interference to radio communications. However, there is no guarantee that interference will not occur in a particular installation. If this equipment does cause harmful interference to

radio or television reception, which can be determined by turning the equipment off and on, the user is encouraged to try to correct the interference by one or more of the following measures:

1. Reorient or relocate the receiving antenna
2. Increase the separation between the equipment and receiver
3. Connect the equipment into an outlet on a circuit different from that to which the receiver is connected
4. Consult the dealer or an experienced radio/TV technician for help

Use of shielded cable is required to comply with Class B limits in Subpart B of Part 15 of the FCC rules. Do not make any changes or modifications to the equipment unless otherwise specified in the manual. If such changes or modifications should be made, you could be required to stop operation of the equipment.

1.2.2 GENERAL WARNINGS –

Do not use batteries other than those specified for use with the camera. The use of unsuitable batteries may result in the batteries splitting or leaking and causing a fire, injury, or soiling of the battery compartment.

When fitting batteries into the camera, check the polarity of the batteries (- and +) to ensure that you insert the battery correctly. Incorrect polarity may result in the batteries splitting or leaking and causing a fire, injury, or soiling of the battery compartment.

Remove the batteries if the camera will not be used for an extended period of time. The batteries may leak and cause a fire, injury or soiling of the battery compartment. If the batteries leak clean and wipe the battery compartment carefully and install new

batteries. Wash your hands carefully if you touch the battery fluid. Please note that when you remove the batteries your images will be lost from the camera memory.

WARNING: Handling the USB cable on this product may expose you to lead, a chemical known to the State of California to cause birth defects or other reproductive harm. Wash your hands after handling.

1.2.3 TRADEMARK INFORMATION -

Microsoft® and Windows® are U.S. registered trademarks of Microsoft Corporation. Pentium® is a registered trademark of Intel Corporation. Other names and products may be trademarks or registered trademarks of their respective owner.

1.3 Package Contents -

The Vivicam 3350B package typically includes:

1. Camera
2. USB cable
3. CD ROM with Application software and TWAIN Driver
4. User Manual
5. Two (2) AAA batteries
6. Hand strap

Note: Included components may vary, as specified by local retailers and locations. Check with your retailer for specifics.

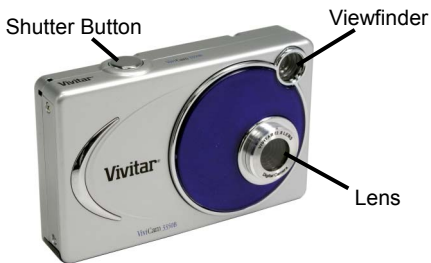
1.4 System Requirements -

You must use a computer to download the images from your Vivicam 3350B. The computer that you use must meet the following minimum requirements:

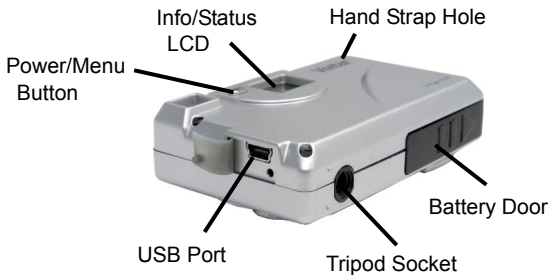
1. Windows 98 Second Edition/2000/Me/XP
2. Direct X 8.0
3. 64 MB RAM
4. 60 MB hard disk space available
5. Available USB port
6. CD-ROM drive

1.5 Vivitar 3350B Features -

Front Side:



Back Side:



2.0 Installing the Batteries -

Step 1: Open the battery door by lifting the tab on the door.

Step 2: Insert two AAA batteries with the polarity as shown:



Step 3: Close the battery cover.

Warning: Do not open the battery door when the camera is powered ON. This will cause all images in memory to be lost immediately. If you open the battery door when the camera is OFF (when changing the batteries) you must close the door within thirty (30) seconds or your images will be erased from memory.

Notes:

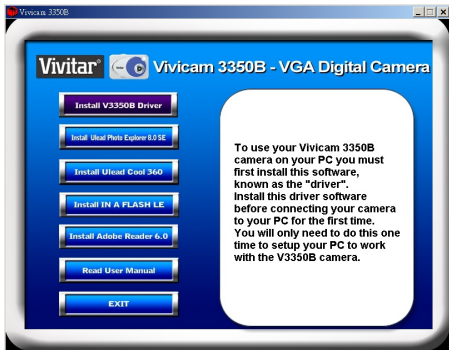
1. Always download your images to your computer soon after you have captured them. Never assume your images will be retained for more than three or four days. If the batteries are depleted, your images will be lost.
2. If you must change the batteries, make sure the camera is OFF and then change the batteries in less than thirty (30) seconds.
3. If you will not use the camera for a long time (several days, or more) remove the batteries. The batteries will discharge slowly if left in the camera. This may cause complete battery discharge as well as loss of images. The batteries may corrode if left in the camera for extended periods of time.
4. Dispose of batteries properly in accordance with local laws and regulations. Do not place them in fire.
5. The Vivicam 3350B has an automatic power-saving feature. The camera will turn off automatically if it has not been used after approximately thirty (30) seconds.
6. When the camera is connected to a computer using a USB cable, it is not necessary to use batteries because the camera uses the power provided by the computer through the USB interface.

3.0 Installing the Software -

Install the camera software **before** connecting the camera to your computer for the first time. Place the Vivicam 3350B CD ROM into your CD-ROM drive. The CD will run automatically and present this welcome screen:

There are six components on the CD ROM:

1. Twain Driver
2. Ulead Photo Explorer
3. Ulead COOL 360
4. In-A-Flash LE
5. Adobe Reader
6. User Manuals



3.1 Twain Driver –

To use your Vivicam 3350B camera on your PC you **must** first install this software, known as the “driver.” Install this driver software **before** connecting your camera to your PC for the first time. You will only need to install the driver once to setup your PC to work with the V3350B camera.

3.2 Ulead® Photo Explorer 8.0 SE –

You may wish to install Ulead® Photo Explorer 8.0. Although Photo Explorer is not required to operate the camera, it gives you everything you need to quickly get, manage, enhance and share digital photos, audio and video files. Photo Explorer is the perfect companion to digital cameras, WebCams, DV camcorders and scanners.

3.3 Ulead® COOL 360™ –

You may wish to install Ulead® COOL 360™. Although COOL 360™ is not required to operate the camera, it will quickly and easily allow photo editing for consumers to transform a series of photos into a complete 360° panoramic or wide-angle panoramic scene for an immersive viewing experience.

3.4 In-A-Flash LE -

You may wish to install NetGUI In-A-Flash LE. Although In-A-Flash LE is not required to operate the camera, it will allow you to easily add animations, special effects and music to your digital photos to create a unique and fun digital photo album. Business users and webmasters will also benefit when creating Flash Banner ads and professional business presentations.

3.5 Adobe® Reader® 6.0 -

You may wish install Adobe® Reader® 6.0. Adobe® Reader® is free software that lets you view and print Adobe Portable Document Format (PDF) files on a variety of hardware and operating system platforms.

3.6 User Manual -

Click on the “User Manual” button to go to the index of ViviCam 3350B User Manuals. The Vivicam 3350B User Manual is included on the CD ROM in PDF format. Note that you will need to install Adobe® Reader® on your PC to read the User Manual.

After you have installed the Vivicam 3350B Twain driver and application software titles you are now ready to use your camera to capture digital images. The next section will tell you about the operation of your new digital camera.

4.0 Capturing Images -

Using your new Vivicam 3350B is fun and easy. There are two basic steps to capturing your first image.

Step 1: Turn on the camera by pressing and hold the Power Button for 2 second.

Step 2: Press the shutter button to capture an image.

It is really that easy! The following sections will tell you about more features that are available on your camera.



4.1 Power On the Camera -

To power on the camera press and hold the Power/Menu button for 2 second as shown above. The camera will beep once, indicating that it is ready. The Information/Status display will turn on like this:

In this example the camera is ready to capture image in Hi resolution mode. (Display icons are explained in section 4.3.)



Note that the camera will automatically power-off after 30 seconds to save battery power. To turn the camera on again, press the Power button.

4.2 Capture an Image -

In film-photography we say: "Take a Photo." In digital-photography we say: "Capture an Image." Capturing an image with the Vivicam 3350B is easy.

Step 1: Power on the camera and look through the viewfinder to frame your subject. Make sure your subject is no closer than three or four feet (one meter) or else it will not be in good focus.

Step 2: Press the shutter button to capture an image.

The camera will double-beep sound and the image counter will increment by one count.

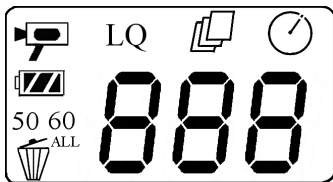
For example the counter may change from **000** to **001**.

The display counter shows the number of images to be taken. When the "Full" warning message appears on the Info/Status LCD the memory is full and you must download your images or delete them to make more space available.






Note: Please note, that when batteries disconnected or discharged, the memory, and all taken pictures will be erased.

4.3 Camera Information Display -

Beyond the basics of capturing an image, the Vivicam 3350B has many other features. Turn on the camera and notice the many icons and symbols on the Information display:



As you press the Power/Menu button the display will change in the following order. To learn more about each function refer to the referenced section in this User Manual.


Display icon	Function	Refer to Section
	Self-Timer	4.5
	Continuous capture	4.6
LQ	Image resolution	4.6
	AVI capture	4.7
50, 60	Indoor lighting frequency (Hz)	4.8
	Delete last image from memory	4.9
	Delete all images from memory	4.9

4.4 Power-Off the Camera -

Press and hold the Power/Menu button for 2 second to turn-off the camera immediately.

Note: The camera will automatically power-off after thirty seconds of inactivity.


4.5 Self-Timer -

If you would like to get into the image you may use the self-timer feature to delay image capture by ten (10) seconds. Place the camera on a tripod or a flat, stable surface. Turn on the camera. Press the Menu button until the “  ” icon appears on the information display.

Press the shutter button within three seconds into Self Timer Mode. Press the shutter button again and the camera will beep as it counts down. The camera will capture an image automatically after 10 seconds.

4.6 Continuous Capture -

You can capture three images using the continuous capture feature. To use the Continuous Capture mode follow these steps:

Step 1: Power on camera. Press the Menu button two times until the “  ” icon appears in the display.

Step 2: Press the shutter button within three seconds into continuous capture. Press the Shutter button again and the camera will capture three images continuously.

4.7 Image Resolution -

Resolution is the size of a digital image measured in pixels (dots), expressed as the number of horizontal pixels X number of vertical pixels. The ViviCam 3350B offers two resolution modes. The highest (best) resolution is 640 x 480. This is called VGA resolution. The second choice of resolution is 320 x 240. This is called QVGA resolution.


VGA resolution images are the best possible images from your camera. QVGA resolution images are noticeably smaller when you view them on your computer. QVGA resolution is not recommended for individual digital images. The primary advantage to QVGA resolution is that you may store more images (four times more) than VGA resolution.

If you would like to get into the QVGA resolution, turn on the camera. Press the Menu button three times until “ **LQ** ” appears in the Information display. Press the shutter button within three seconds to change to the QVGA resolution mode.

If you would like to change resolution from QVGA to VGA, press the Menu button three times and press the shutter button within three seconds to change to the VGA resolution mode. The “ **LQ** ” icon will disappear in the Information display.

4.8 AVI Capture -

You can capture motion-video clips using the AVI capture feature. The image is stored in avi-format and the image number only steps by 1 every time. When you use this mode the image resolution will be 320 x 240. The movie-clip frame rate will be approximately seven frames per second. Movie clips are silent. (No audio.) To use the AVI capture mode follow these steps:

Step 1: Power on camera. Press the Menu button four times until the “” icon appears in the display.

Step 2: Press the shutter button within three seconds into AVI capture mode. Once the shutter button is pressed, the camera will beep and the camera starts to capture images continuously until the button is released.

Step 3: Release the Shutter button to stop recording. The camera will stop recording automatically when memory is full.

Note: When you download a movie-clip it will be in the popular AVI format. Use Windows Media Player or Apple Quick Time Player to view movies.

4.9 Light Frequency -


When capturing images or movie clips under indoor lighting the image quality will be best if you set the camera to match the frequency of the room-lighting. In generally 60Hz frequency is used in United States and Asia. 50Hz is most common in UK, Japan, and Europe.

To change the frequency, turn on the camera. Press the Menu button five times until “ 50 ” or “ 60 ” appears in the display. This is the other frequency setting. Press the shutter button within three seconds to change to this setting.

4.10 Deleting Images -


You may wish to delete images from your camera. You can delete the last image captured, or you may delete all images in memory.

4.10.1 Delete the Last Image -

Step 1: Power on camera. Press the Menu button six times until the “  ” icon appears in the display.

Step 2: Press the shutter button within three seconds. The image counter will flash on & off and press the shutter button again within three seconds. The image will be deleted and the image counter will decrease by one. (Example: 020 will change to 019.)

4.10.2 Delete All Images -

Step 1: Power on camera. Press the Menu button seven times until the “  ” icon appears in the display.

Step 2: Press the Shutter button within three seconds. The image counter will flash on & off and press the shutter button again within three seconds.

Step 3: All Images will be deleted and the image counter will display 000.

4.11 Techniques for Capturing the Best Images -

The ViviCam 3350B can take good images. There are a few tips for getting the best possible images from your camera.

1. Use good lighting. The ViviCam 3350B works best with adequate lighting. Since it has no flash your subject must be adequately illuminated.
2. Avoid uneven lighting and high contrast. Compose your scenes so that there are no deep shadows or bright backgrounds. The key to good images is balanced (even) scene lighting.
3. Minimum focus distance. Make sure your subject is not too close. The minimum focus distance is three to four feet (one meter.)
4. Position your primary subject in the center of the image. The ViviCam 3350B focuses best in the center of the image. The edges of your images are softly focused, giving a nice soft perimeter effect to each image.

5.0 Download Images to your Computer

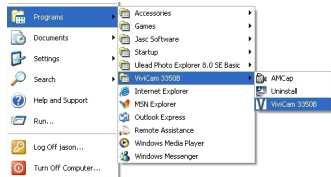
Note: Before connecting your ViviCam 3350B to your PC for the **first** time you must first install the Twain driver first (see section 3.1). After the driver software has been installed, your still images and movie clips can be transferred to your PC using the USB cable.

Connect your camera to your PC using the USB cable. The camera will beep once, indicating the connection is established. The camera installation process will be completed the first time the camera is connected to your PC.


5.1 Transfer Images to your PC -

To transfer images to your PC connect the camera to your PC.

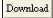
Click on Start, Programs, ViviCam 3350B, ViviCam 3350B:



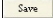
This screen (called the Graphical User Interface, or **GUI**) will appear:

Step 1: Click "Download Images from Camera" button  to bring up the "**CAMERA PHOTO**

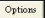
VIEWER" download windows.

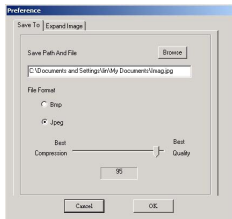
Step 2: Click “Download” button  to get small images (called “thumbnail images”) from camera. They are small representations of the images stored in the camera.

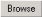


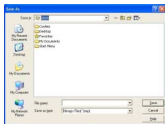
Step 3: Select the images. Select the image (Img-xxxx) or movie-clip (Avi-xxxx) you wish to transfer to your PC and click “Save” button  to save them. Selected images will be highlighted the thumbnail image. To select more than one, simply hold down your 'Ctrl' key while left clicking each choice. You may hold down your 'Ctrl' key while left clicking again to un-select it.

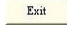

Step 4: Click on “Save” button to save the image that you wish to download. The image default location is “My Documents”. (C:\Documents and Settings\UserName\My Documents\)

Step 5: You can change the image destination folder. When you click on “Options” button  it will be presented the dialog box on screen:



You can click "Browse" button  to select or create a folder, if you would like to save your images. Give your images a name prefix in the "File Name" field, then click on "Save" button.

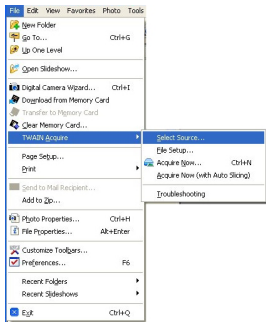


Step 6: Click "Exit" button  to close the Download windows and
Click "Exit" button  to close the GUI.

Note: After your images are downloaded to your PC, disconnect the camera. Your images remain in camera memory. Delete the images from camera memory as described in section 4.10 so that you may capture more images.

5.2 Transferring Images to a Twain-aware application –

You may call the Vivicam 3350B Graphical User Interface from any Twain-aware application such as PhotoExplorer using the acquire function. You may first edit your images (rotate, crop, adjust colors, etc.) before saving them to disk.



5.2.1 Transferring your Images to PhotoExplorer –

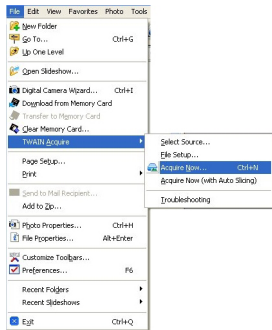
To transfer your images from the ViviCam 3350B to PhotoExplorer follow these steps:

Step 1: Start **PhotoExplorer**. Select **“File”** -> **“TWAIN Acquire”** -> **“Select Source”**. Select the Twain source.

Step 2: In the **“Select Source”** dialog box. Select and highlight **“ViviCam 3350B”** and click **“Select”**. (You may have other Twain devices on your PC.)

Step 3: Select **“File”** -> **“TWAIN Acquire”** -> **“Acquire Now”** to bring up the **“ViviCam 3350B”** GUI.

The ViviCam 3350B GUI will appear. Use the ViviCam 3350B GUI as described in Section 5.1 with one exception. Because the ViviCam 3350B GUI has been called from a Twain application. Click on **“Transfer”** to transfer Images and movie-clip into the PhotoExplorer working area.



Note: A Twain-aware application is any software application that recognizes a Twain device. Most imaging and image editing application programs support Twain cameras. Refer to the help file for your favorite image program for more information.

Note: Some Twain applications only allow you to transfer one image at a time.

6.0 PC/Web Camera Video Function

6.1 Using the ViviCam 3350B in Video Mode –

PC users may use their Vivicam 3350B as a PC/Web cam. Note that the ViviCam 3350B is a dual mode camera. It is both a digital-still camera and a PC video camera. In the video mode the ViviCam 3350B is known as the **“ViviCam 3350B”** camera.

To use your camera as a PC/web cam you must first install the driver from the Vivicam 3350B CD ROM. After the driver is installed and the camera is connected to your PC you may view live video several ways:

1. Use the AMCAP video utility included with the camera. (refer to section 6.2.)
2. From the Windows XP desktop double click on My Computer. Look for “Scanners and Cameras”. Locate the ViviCam 3350B camera icon. Double click on the video-camera icon to begin the video function.
3. Use your favorite third-party video program.
4. Use Microsoft NetMeeting (see section 6.3)
5. Use Windows Movie Maker for Windows XP (see section 6.4)

Scanners and Cameras

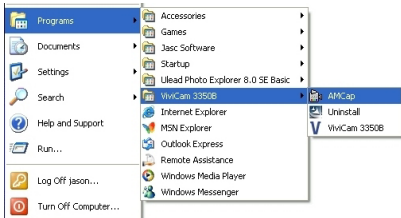


ViviCam 3350B

Note: The Vivicam 3350B is a dual mode camera. You may use either mode, but you cannot use both modes at the same time. Close the ViviCam 3350B GUI before starting the ViviCam 3350B video mode.

6.2 Using the ViviCam 3350B with AMCAP –

1. Click on Start, Programs, ViviCam 3350B, AMCap to start AMCAP:
2. Select **“Options”** -> **“Preview”** to begin the video function.



6.3 Using the ViviCam 3350B with NetMeeting –

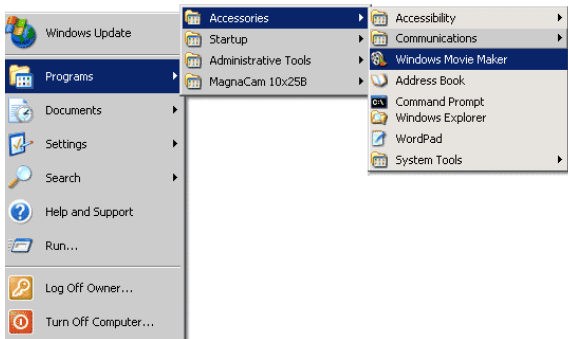
Windows 98 & Me users may wish to use MS NetMeeting.

1. Start NetMeeting
2. After NetMeeting starts, click on Tools, Options
3. From the Options dialog box, select the Video tab
4. Refer to the Video camera properties section
5. Select “ViviCam 3350B” as the video capture device
6. Refer to the NetMeeting help file for additional information

6.4 Using the ViviCam 3350B with Movie Maker on Windows XP –

Windows XP users can use Windows Movie Maker.

3. Click on Start, Programs, Accessories, Windows Movie Maker to start Movie Maker:



4. After Movie Maker starts -
 - a. Click on: "Capture from a Video Device"
 - b. Select "ViviCam 3350B" in the available devices section
 - c. Follow on-screen instructions until live-video is displayed

7.0 Specifications

Image Resolution: 640 x 480 Pixels (VGA), or 320 x 240 Pixels (QVGA)

Built-in memory: 8 MB (SDRAM)

Image storage Capacity:

Resolution	Total Image
640 x 480 (VGA)	54
320 x 240 (QVGA)	250
Movie = 320 x 240 (QVGA)	40 seconds

Viewfinder: Built-in optical view-finder

Self-Timer: 10 seconds

Continuous (movie) mode frame rate: 7 frames per second

Capture Modes: Single, Continuous, AVI Capture (movie clips)

Automatic Energy Saving: automatically shut-down after 30 seconds

Exposure and White Balance: Automatic

Power: Two AAA (1.5 VDC) batteries, or USB 5V bus voltage

PC Interface: USB 1.1

Working Temperature: 0 to 40 degrees C

Free Manuals Download Website

<http://myh66.com>

<http://usermanuals.us>

<http://www.somanuals.com>

<http://www.4manuals.cc>

<http://www.manual-lib.com>

<http://www.404manual.com>

<http://www.luxmanual.com>

<http://aubethermostatmanual.com>

Golf course search by state

<http://golfingnear.com>

Email search by domain

<http://emailbydomain.com>

Auto manuals search

<http://auto.somanuals.com>

TV manuals search

<http://tv.somanuals.com>