



Vivotek **IP Surveillance System**

Wireless Network Camera with Pan/Tilt PT3113/23

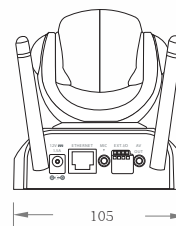
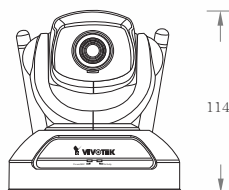
Vivotek MPEG-4 Network Camera with Pan/Tilt, PT 3113/23 is a powerful surveillance system connecting to a wired Ethernet or Enhanced 802.11b wireless connection to provide remote high-quality video and audio. The pan/tilt function that can be controlled through the Internet or the included IR remote control extends the camera practicability and application. Users of Vivotek PT3113/23 can easily access it via an Internet Explorer browser, receiving synchronized video&audio from anywhere anytime.

Features

- MPEG-4 Compression Engine
- Motorized Pant/Tilt (IR Remote Control included)
- Optimal Synchronization of Audio & Video
- Enhanced 802.11b+(22Mbps) Wireless Connection
- 256-bit WEP Encryption
- UPnP & DDNS Support
- Intelligent Motion Detection
- Pre/Post Alarm Snapshots
- Extended I/O for Sensor & Alarm
- Free-Bundled Recording Software

Technical Specifications

PT3113/23



Model

- PT3113 NTSC CCD
- PT3123 PAL CCD

System

- CPU: Trimedia PNX1300
- RAM: 16MB SDRAM
- ROM: 2MB FLASH ROM

Networking

- Protocol
UPnp, TCP/IP, HTTP, SMTP, FTP, Telnet, NTP, DNS, DDNS and DHCP
- Ethernet
10 baseT or 100 baseT Fast Ethernet auto negotiation
- Wireless Ethernet
802.11b+

Video

- Algorithm supported
MPEG4(short header mode)
JPEG for still image
- Features
Adjustable image size and quality
Time stamp and text overlay
Three configurable motion detection windows
Flip & mirror
Video output connector
- Resolution
NTSC
Up to 30 frames at 176x120
Up to 30 frames at 352x240
PAL
Up to 25 frames at 176x144
Up to 25 frames at 352x288

Camera Specifications

- 1/4 inch color CCD image sensor
512(H)x492(V)(PT3113)/512(H)x582(V)(PT3123)
1 Lux / F2.0
AGC, AWB, AES
Electronic shutter:1/60(1/50)~1/100,000sec.

Lens

- Standard CS-mount type, 4.3mm, F2.0

Audio

- 24kbps
- Supporting audio mute

Microphone

- Omni-directional
- Frequency
20 ~ 20000Hz
- S/N ratio
More than 58dB

General I/O

- 1 sensor input max. 12VDC 50mA
- 1 relay output max. 24VDC 1A / 125VAC 0.5A

Pan/Tilt

- Pan: range $\pm 135^\circ$, $10^\circ \sim 50^\circ/\text{sec}$
- Tilt: range $+90^\circ \sim -45^\circ$, $7^\circ \sim 25^\circ/\text{sec}$
- Auto pan mode
- Auto patrol mode

LED Indicators

- System power and status indicators
- System activity and Network link indicators

Dimension

- Length: 105mm
- Width: 105mm
- Height: 114mm

Weight

- NET. 395g

Power

- Consumption:
PT3113/3123: near 8.4W
- Input: 100-240VAC, 50/60Hz, 0.4A
- Output: 12VDC, 1.5A

Operating Environment

- Temperature: 0~50°C(32~122°F)
- Humidity: 95% RH

EMI & Safety

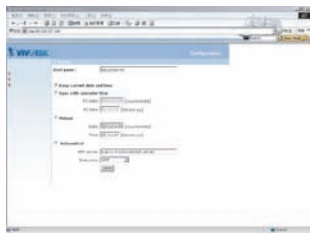
- CE, FCC

Viewing System Requirement

- Operation system: Microsoft Windows98 SE, ME, 2000, XP
- Browser: Internet Explorer 5.0 or above

Free Bundled ST3402 Software

- Remote configuration and control sixteen devices
- Event-triggered, scheduled, manual recording
- Instant search with preview windows
- Fast/slow forward replay and pause
- Hard disk quota warning
- Scheduled record
- AVI format export



All specifications are subject to change without notice.
All other trademarks are owned by their respective companies.



VIVOTEK INC.
6F., No.192, Lien-Cheng Rd.,
Chung-Ho, Taipei County, Taiwan
Tel: +886 2 82455282
E-mail: sales@vivotek.com
Web: www.vivotek.com



Free Manuals Download Website

<http://myh66.com>

<http://usermanuals.us>

<http://www.somanuals.com>

<http://www.4manuals.cc>

<http://www.manual-lib.com>

<http://www.404manual.com>

<http://www.luxmanual.com>

<http://aubethermostatmanual.com>

Golf course search by state

<http://golfingnear.com>

Email search by domain

<http://emailbydomain.com>

Auto manuals search

<http://auto.somanuals.com>

TV manuals search

<http://tv.somanuals.com>