

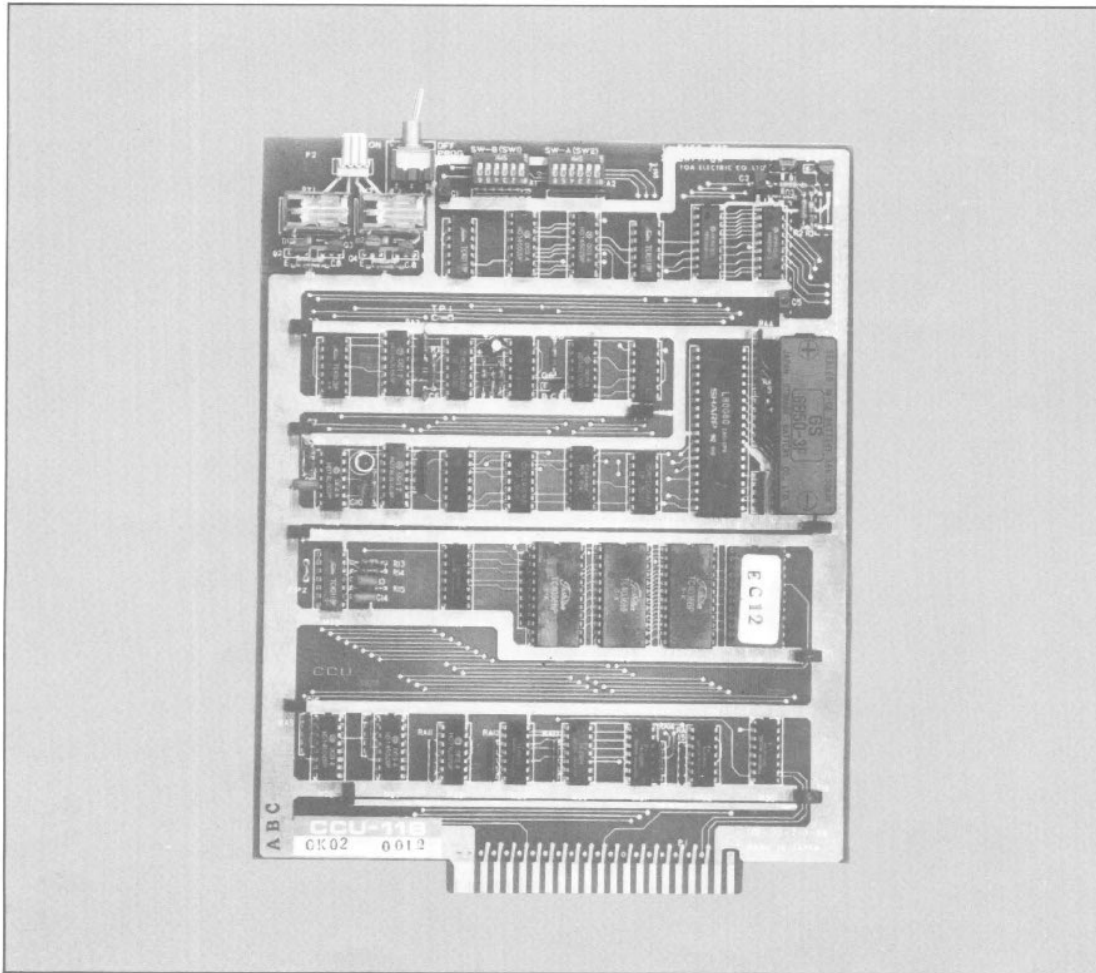


TOA EXES-1000 INTERCOM SYSTEM

Central Control Unit

CCU-11B

INSTALLATION HAND BOOK



TOA ELECTRIC CO., LTD.
KOBE, JAPAN

133-21-012-7A

CONTENTS

	Page
1. Introduction	2
2. Functions which Require Additional Units	2
3. Precautions for Installation of CCU-11B	3
4. Initial CCU-11B Set Up	4
5. DIP Switch for Function Selection on CCU-11 B.	5
6. Station No. 11 Programming for Each Function	5
7. Remote Control Relay (RY1 & RY2) on CCU-11B.	8
7-1 Functions and Operations	8
7-2 Connection	9
8. Programming List for Functions	10

1. INTRODUCTION

This manual forms part of the Installation Manual for TOA INTERCOM SYSTEM EXES-1000.

You may add to the CCU-11B to your TOA INTERCOM SYSTEM EXES-1000, according to your specific needs, to obtain various other functions.

Correct operation of these additional functions are **not available by only connection of the additional equipments/devices.**

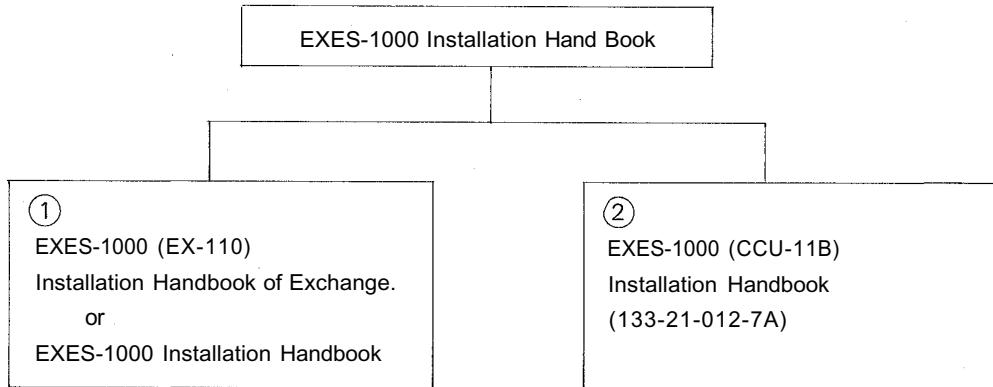
Provision of such additional functions requires the followings:

- (1) Connection of the additional equipment, as required,
- (2) Selection of functions which satisfy your needs and setting up these functions in the respective equipment.

For (1) Connections of Equipment, etc., refer to Manual of Installation Hand Book of EXES-1000 (EX-110) Exchange.

This "Installation Hand Book of CCU-11B" deals principally with (2) selection of functions and setting up of respective equipment.

There are certain minimum installation requirements to be met even though you may not need many additional functions or additional equipment, **it is still necessary to read "4. Initial CCU-11B Set Up (Page 4.)"**. When you may use only some of the additional functions or equipments, it is not necessary to read instructions on unrequired functions. Make sure, however, that careful study of the necessary parts of this booklet should be done before proceeding further.



2. FUNCTIONS WHICH REQUIRE ADDITIONAL UNITS

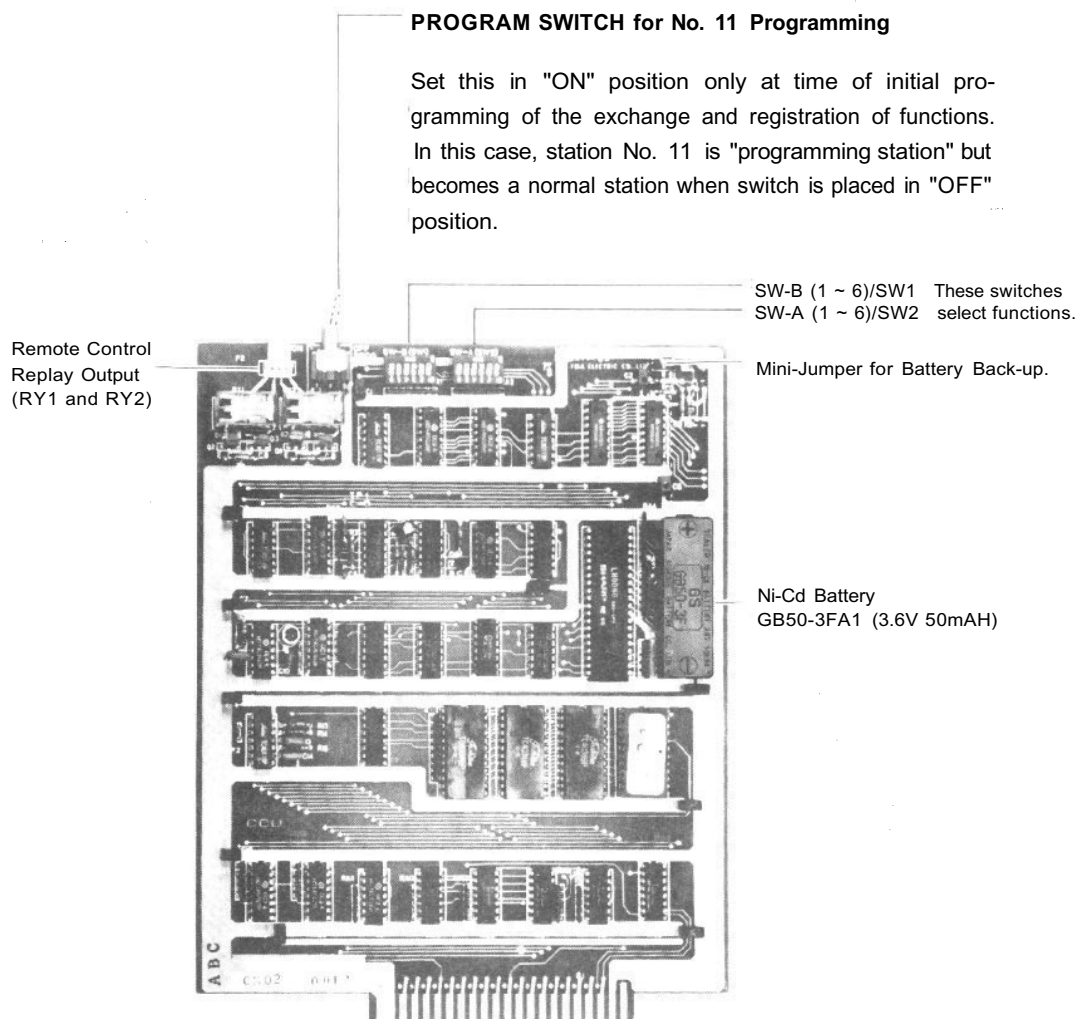
Functions of CCU-11B which require either the addition of specific units or processing in existing units are as mentioned below.

Function	Additional Equipment Required	Unit Model No.	Remarks
Talk-Back from paging speaker	Talk-Back Unit	TKU-11	Optional amplifier (10W max.) may be required depending on application.

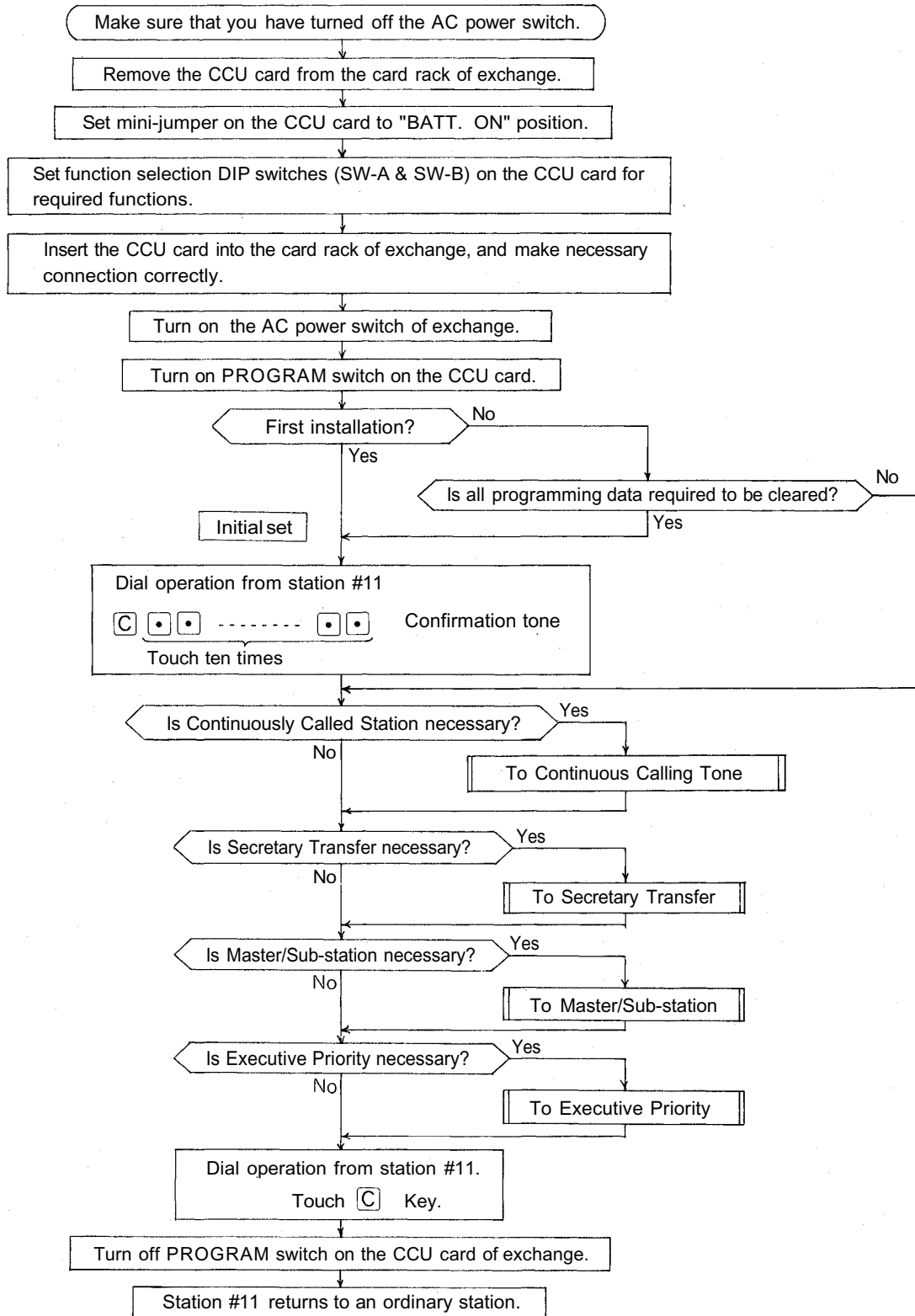
3. PRECAUTIONS FOR INSTALLATION OF CCU-11B.

Please read following instructions carefully to ensure proper operation of the CCU-11B.

1. Be careful about damage by static electricity as the CCU-11B incorporates CMOS IC's. Do not touch components and connectors.
2. Turn off the AC power switch when you take out or insert the CCU-11B unit or any other unit.
3. Always insert the CCU-11B unit into the "CCU" slot. Otherwise, there is a danger that the unit will be damaged.
4. Make sure mini-jumper for battery back-up is always placed in "ON" position each time it is used.
5. Incorrect setting of function select switches may lead to incorrect performance.
6. Even if you do not need programming functions, be sure to carry out initial programming and registration at station No. 11 when you install the new unit. Otherwise, some other functions may not work properly.
7. The Ni-Cd battery GB50-3FA1 is capable of saving important memory registration data even at times of power failure and we suggest you replace it at least every 4 years.
8. When shipping the CCU-11B unit independently, place the mini-jumper for battery back-up in "OFF" position. Then cover CCU back with cardboard, wrap connector section in aluminium foil and put it in a conductive bag.



4 INITIAL CCU-11B SET UP



5 DIP SWITCH FOR FUNCTION SELECTION ON CCU-11B

The DIP switches on the CCU-11B allow selection of the following functions;

- | | |
|--|------------------------------------|
| A. All Call Paging and Response | E. PTT Control |
| B. Call Holding/Call Transfer | F. Priority and Executive Priority |
| C. Calling Tone Duration | G. Remote Control |
| D. Time Interval Adjustment before All Call Paging | H. Continuous Calling Tone |

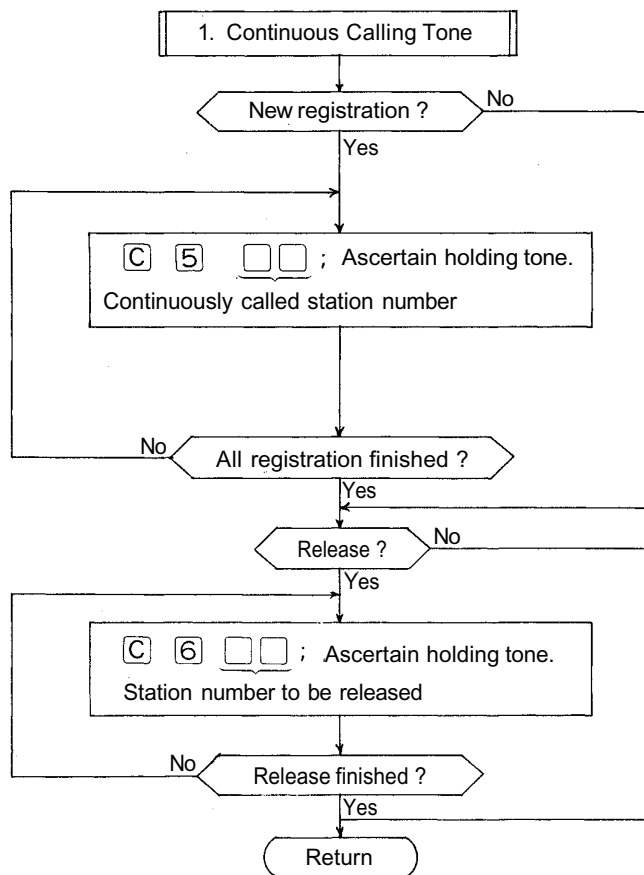
Switches	Functions	DIP-SW "ON" Position	DIP-SW "OFF" Position
<p>1: BATT. OFF 2: BATT. ON</p>	Mini-Jumper for Battery	<p>Battery "ON" Position</p>	<p>Battery "OFF" Position</p>
<p>SW-A (SW2)</p>	OFF	—	—
	OFF	—	—
	Remote Control (Door)	Make/Break Relay Output	One shot Relay Output (4sec.)
	Continues Calling Tone	Activate	Not Activate
	OFF	—	—
	OFF	—	—
<p>SW-B (SW1)</p>	Priority & Executive Priority	Activate	Not Activate
	Press to Talk Control	Activate	Not Activate
	Time Interval Adjustment before All Call Paging Pre-announce Tone	1 ~ 2 sec.	None
	Calling Tone Duration	Short (0.7 sec)	Long (1.3 sec)
	Call Transfer	Activate	Not Activate
	All Call Paging & Response	Activate	Not Activate
<p>OFF ON</p>	Programming Switch	Station No. 11 is "Programming station"	Station No. 11 is a normal station

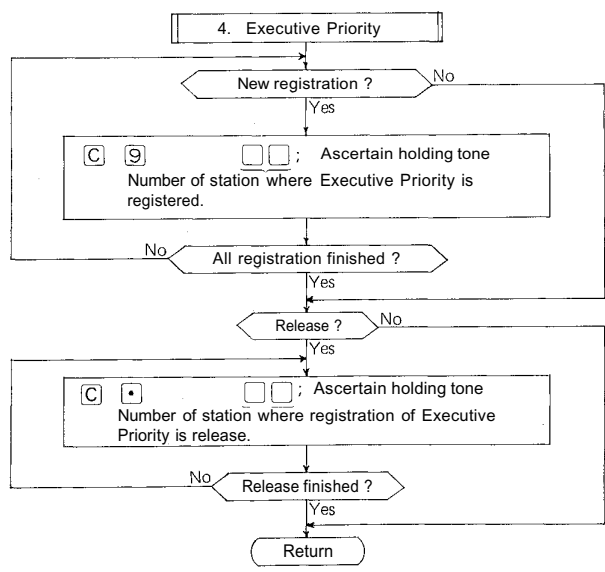
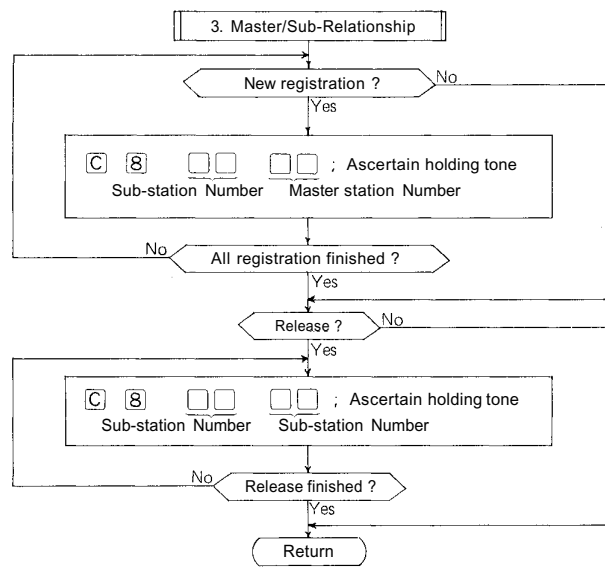
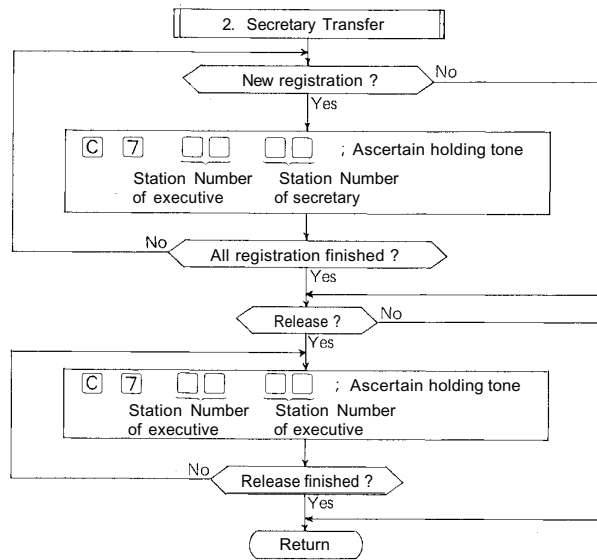
6. STATION NO. 11 PROGRAMMING FOR EACH FUNCTION

Use station #11 for programming of "Continuous Calling Tone", "Secretary Transfer", "Master/Sub-Relationship" and/or "Executive Priority" functions.

- Remarks:
1. In the event of failure to touch keys for correct dialing, privacy tone will be sound.
Re-start from the beginning.
 2. When All Call Paging is used, the registration to the station #10 can not be done.

The following shows how to register the functions:





7. REMOTE CONTROL RELAYS (RY1 & RY2) ON CCU-11B

Remark: Relay Control Capacity: 30VDC, 2A

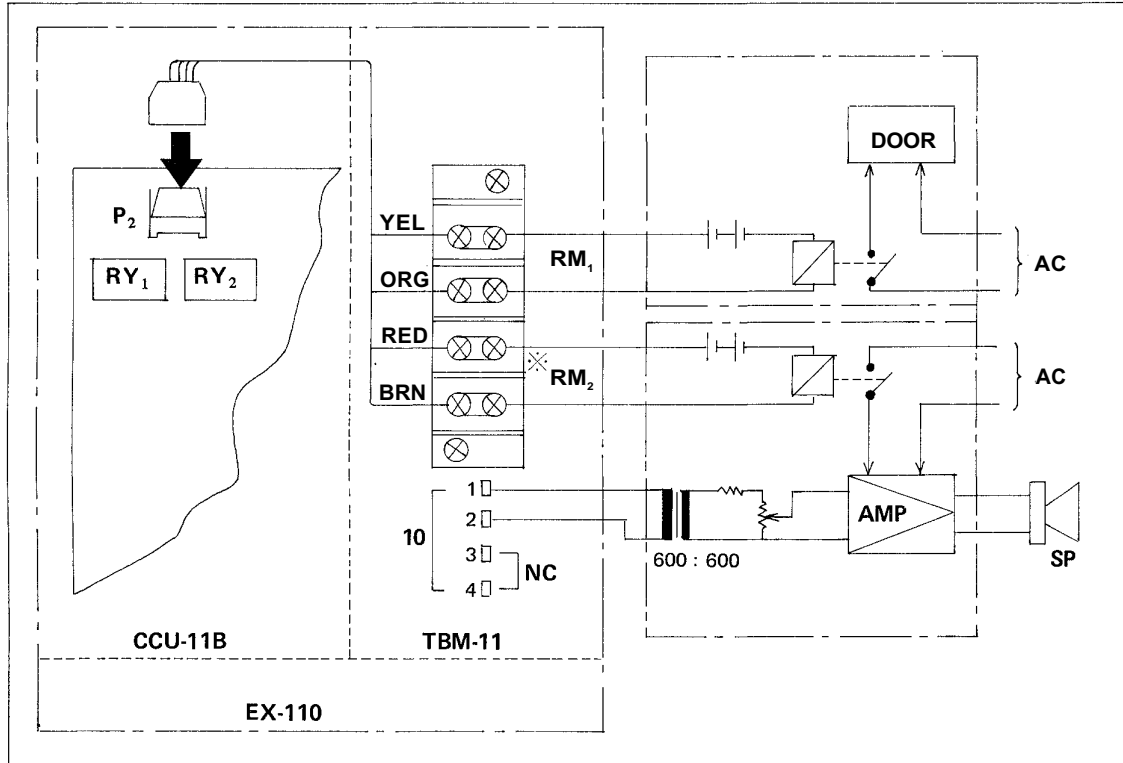
Relays (RY1 & RY2) on CCU-11B are available for following functions.

7-1. Function and Operations

Relay No.	DIP Switch Position	Functions and Operations
RY1	● SW-A-3 "OFF"	A Door Remote Control (One-shot-Make Relay Output) Every master station can be used as a remote control device for door opening. Touch dial 4 2 gives approximately 4 seconds make-contact for the door opening.
	● SW-A-3 "ON"	B Door Remote Control (Make-Break Relay Output) Every master station can be used as a remote control device for door opening. Touch dial 4 4 gives continuous make-contact for door opening. Then touch dial 4 5 gives break-contact for door closing.
RY2	● SW-B-2 "OFF"	C Power ON/OFF Remote Control When the system is used in conjunction with PA amplifier for the external All-Call paging, the power switch of the PA amplifier can be turned on/off with the relay built in the system. Touch dial 8 gives the make-contact together with the All-Call function until the function is canceled by dialing C . (Remark: Touch dial C gives break-contact of the relay.)
	● SW-B-2 "ON"	D Press To Talk Control Touch dialing the specific station #17. One way conversation is activated while the Press-To-Talk bar is continuously depressed, same as the Press-To-Talk (selected simplex) function, and the relay is activated with continuous make-contact. One way conversation is reversed when the Press-To-Talk bar is released, and the relay is activated with break-contact.

7-2. Connections

- A. Connect 4-pin connector from TBM-11 (Terminal module) to P2 connection socket on the CCU-11B.
- B. RM_1 terminals on TBM-11 are for the door remote control relay contacts and RM_2 terminals on TBM-11 are for the power ON/OFF remote control or press to talk remote control relay contacts.
(Please refer to the following diagram.)



※ In the case of power ON/OFF remote control.

8. PROGRAMMING LIST FOR FUNCTIONS

Use these tables to keep a record of those functions assigned to each station.

Function Table for Stations

Name	Station No.	Continuous Calling Tone	Executive Priority	Secretary Station No.	Master Station No.	Functions	
	10						
	11						
	12						
	13						
	14						
	15						
	16						
	17						
	18						
	19						
	20						
	21						
	22						
	23						
	24						
	25						
	26						
	27						
	28						
	29						
	30						
	31						
	32						
	33						
	34						
	35						
	36						
	37						
	38						
	39						
	40						
	41						



TOA ELECTRIC CO., LTD.
KOBE, JAPAN

Printed in Japan

Free Manuals Download Website

<http://myh66.com>

<http://usermanuals.us>

<http://www.somanuals.com>

<http://www.4manuals.cc>

<http://www.manual-lib.com>

<http://www.404manual.com>

<http://www.luxmanual.com>

<http://aubethermostatmanual.com>

Golf course search by state

<http://golfingnear.com>

Email search by domain

<http://emailbydomain.com>

Auto manuals search

<http://auto.somanuals.com>

TV manuals search

<http://tv.somanuals.com>