



VP8390

User's Guide

Rev. A

© 2006 Vosonic Technology Corporation. All rights reserved.

Dear Customer


Thank you for purchasing the Vosonic VP8390.

1. Before using the Vosonic VP8390, you will have to

1-1 Charge the battery

Battery Level:

Battery Low  (Red)

Charging: 

Battery Full:  (Green)

1-2 Install Windows USB driver
(if you are a Windows 98 user)

1-3 Keep VP8390 plugged into the AC
adapter/charger while connected to your
computer.

1-4 Make sure the HDD is already partitioned and
formatted as FAT system.

1-5 Check www.vosonic.com for the latest
firmware we offer with new functions and
improved features.

Enjoy your VP8390
The Vosonic Team

CAUTION

Under no circumstances should you try to repair the system yourself, as this will invalidate the warranty. Do not open the system as there is risk of electrical shock.

FCC Certifications

This equipment has been tested and found to comply with the limits for a Class B digital device, pursuant to Part 15 of the FCC Rules. These limits are designed to provide reasonable protection against harmful interference in a residential installation.

This equipment generates, uses and can radiate radio frequency energy and, if not installed and used in accordance with the instructions, may cause harmful interference to radio communications.

However, there is no guarantee that interference will not occur in a particular installation. If this equipment does interfere with radio or television reception, which can be determined by turning the equipment off and on, try to correct the interference in one of the following ways:

- Reorient or relocate the receiving antenna.
- Increase the separation between the equipment and receiver.
- Connect the equipment into an outlet on a different circuit from that to which the receiver is connected.
- Consult the dealer or an experienced technician for help.

Important Warranty Information

- To reduce the risk of fire or shock hazard, do not expose this equipment to rain, liquid or moisture.
- Versonic shall have no obligation to repair, replace or refund until the customer returns the defective product to Versonic.
- The repairs and replacement service will not apply to **Product** units that were misused, repaired without authorization or for other reasons beyond the range of intended use.
- Any replacement product may be either new or like-new, provided that it has functionality at least equal to that of the product being replaced.
- Versonic is not responsible for any data stored on returned products, please backup any data prior to shipping the unit.
- The limited warranty for accessories (including battery) is only valid for **6** months from the date of purchasing.
- All OUT OF WARRANTY repairs may be subject to a normal repair fee. Please contact your dealer or Versonic for current charges.

Package Checklist

- Main unit
- Viewing / Recording Cradle
- Earphones
- A/V cable with 3 RCA plugs for AV input and output on cradle
- A/V cables for Audio / Video output on device
(This allows you to view video away from home without carrying the cradle)
- Multi-connect 3 RCA Jack
- Mini 5 Pins USB Cable for cradle
- Line-in cable
- Remote Control
- Carrying Case
- English user's guide
- Setup CD-ROM
- Video-conversion software
- Power Adapter (100-240V auto-switched)

Specifications

Video playback	<p>AVI: Motion-JPEG in AVI format, 640x480 @30fps with PCM audio</p> <p>MOV: Motion-JPEG in MOV format, 640x480 @30fps with PCM audio</p> <p>Note: QuickTime movie is an unsupported codec</p>
Video resolution*)	<p>MPEG-1 Resolution: 352x288 @30fps Bit Rate: 1.5Mbps Audio: MPEG-1 Layer II/III Format: MPG/.DAT, VCD</p> <p>MPEG-4 Resolution: 720x480 @25fps 640x480 @30fps 720x480 @10fps (4MV) 640x480 @15fps (4MV) Bit Rate: 4Mbps Audio: AAC Format: MP4, Simple Profile without 4MV MPEG-4: ISO standard by Moving Picture Experts Group</p> <p>XviD Resolution: 720x480 @25fps 640x480 @30fps Bit Rate: 4Mbps Audio: MP3, PCM Format: AVI Remark: AC3 unsupported</p> <p>WMV9 Resolution: 352x240 @25fps 320x240 @30fps Bit Rate: 1.1Mbps Audio: WMA Format: WMV</p> <p>Remark: Unsupported WMV 7/8</p> <p>*) Note: Video Output Quality is 320 x 240 pixels.</p>

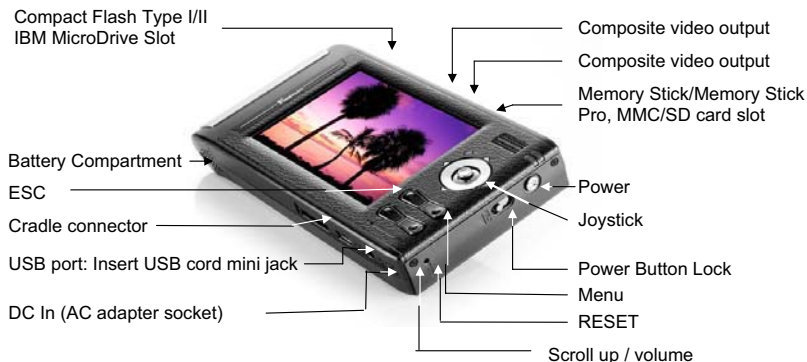
<p>Audio playback</p>	<p>MP3: MPEG-1 Layer I/II/III, MPEG-2 Layer 2.5, sample rate up to 48KHz, bit rate 16~384kbps, CBR and VBR, Stereo or Mono, MP3 file format</p> <p>WMA: WMA 7/8/9, Sample Rate up to 44KHz, bit rate: 32~192Kbps, CBR, Stereo / Mono, Microsoft DRM10</p> <p>AAC: MPEG4-AAC, sample rate up to 48KHz, bit rate 16~320kbps, CBR, VBR, ABR, Stereo / Mono, M4A or AAC file format</p> <p>WAV: sample rate up to 48KHz, Stereo / Mono, un-compressed 8 or 16bits PCM in MS-RIFF WAV (WAV) file format</p> <p>CDA: CD-Audio (16bits 44.1KHz stereo)</p> <p>* Support M3U play list</p>
<p>Photo viewer</p>	<p>JPEG: Baseline YUV</p> <p>TIFF: 1 and 8 bits grey scale, 8 bits indexed-color, 8 and 16 bits true color</p> <p>BMP: Monochrome, 8 bits indexed-color, RGB, RLE8 GIF</p> <p>RAW: Support for the following camera models: Canon: 1Ds Mark-II, 1D Mark II N, 1Ds, 1D-II, 1D, 5D, 20D, 10D, 300D (Digital Rebel, Kiss Digital), Digital Rebel XT, D30, Power Shot G1/G2/G3/G5/G6, 350D, 30D Nikon: D200, D100, D70, D50, D1X, D2X, D1H, D1 Kodak: DSC Pro SLR/c, DSC Pro SLR/n, DSC Pro 14n, P880 Fujifilm: FinePix S2Pro, FinePix S3Pro, Finepix S5500 ,Finepix E900 Olympus: E-1, E-500 ,E-300 Minolta: A1, A2, A200, DYNAX D7, MAXXUM 5D, MAXXUM 7D, DiIMAGE 7 Panasonic: DMC-FZ30 Pentax: istD, istDL, istDS Sony DSC-R1 (.SR2), DMC-LX1 Lecia R8/R9</p>

	For more supported models check www.vosonic.com Zoom IN/Out Rotate by 90° EXIF data Slideshow with background music
Voice Recording	Voice recording from line-in or internal microphone *AAC format
Video Recording	Resolution: 352x240 @30fps Audio: AAC Format: MP4
FM Radio	87.5MHz ~ 108MHz
Direct Printing	PictBridge Compliant
Text Viewer	Support TXT file (Read)
Support Memory Card Interfaces	Compact Flash™ Card type I/type II (CF) Memory Stick® (MS) Secure Digital Card (SD) MultiMedia Card (MMC) IBM® MicroDrive Mini-SD (with adapter) RS-MMC (with adapter) MS Duo (with adapter), MS Pro Duo (with adapter).
Hard Disk Format	2.5" Hard Disk (ATA Interface)
Hard Disk Size	20G ~ 120G
AV device	Analogue AV-OUT composite RCA jack Stereo earphone jack.
Display	3.5" OLED, 320 x 240 pixels, RGB
Interface	USB 2.0
Built-in speaker	8 Ohm up to 400mW
Power supplier	5V/2.5A DC IN, Li-ion 3.7V 2300 mAh battery*) (NP-100 compatible) Non-Stop Photo backup: Approx. 38 times for 1GB**) Non-Stop Music Playback: Approx. 12 hours (LCD OFF) Non-Stop Video Playback: Approx. 4 hours *) The Li-ion rechargeable battery can be recharged approx. 500 times. Battery life-time may vary with use. **) The number of backup times is subject to the Hard Drive/memory card / Files type.

TV system	PAL / NTSC (Interlace TV)
Remote Control	IrDA (Lithium Battery CR2025 3V x 1)
Dimensions	72 x 135 x 23mm (W x L x H)
Weight	236gr. (including 2.5" HDD & battery pack)
System OS	<p>Windows 98/98SE with driver Windows XP, Windows 2000 SP3 or above requires no driver Linux kernel 2.4 or above requires no driver Mac OS 9.0 (with driver) Mac OS 10.0.1 and above requires no driver</p> <p>Note: VP8390 doesn't support Windows 2000 SP1, SP2. Please upgrade to SP3 or above.</p>

- Please visit our web site to download the most recent manual and software.
- The VP8390 may not play the videos created with a codec other than those specified above. If you have other file types that you would like to view on your VP8390, you must use the video-editing software to re-encode them into the proper video codec with supported sound stream.

2. Overview of Panels & Keys



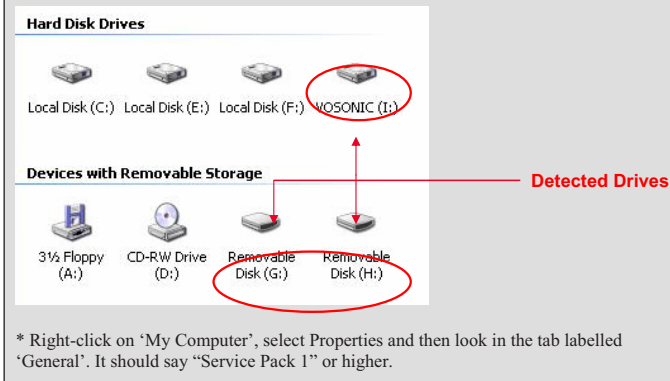
Keypad	Function Description
Joystick	<i>Press/ Enter:</i> Execute the current selection
	<i>Rotate:</i> This function operates in Photo Playback Mode.
	<i>Pause:</i> This function operates in Music & Video Playback Mode.
	◀ Direction icon: Use joystick to move cursor on the screen. Fast Backward: This function operates in Music & Video Playback Mode.
	▶ Direction icon: Use joystick to move cursor on the screen. Fast Forward: This function operates in Music & Video Playback Mode.
	▲ Direction icon: Use joystick to move cursor on the screen.
	▼ Direction icon: Use joystick button to move cursor on the screen.
MENU	Play modes & system setting selection
ESC	Takes you back to previous mode
+	Photo zoom-out This function operates in Photo Playback Mode.
	Increase volume
-	Decrease volume
	Photo zoom-in This function operates in Photo Playback Mode.

3. Using the VP8390


3-1 Starting up

- 1) Charge the batteries
 - Before using for the first time, charge the batteries for a full 4 hours.
 - You can also charge it by plugging the adapter/charger into the cradle and placing your VP8390 in the cradle.
- 2) Power On /Off
 - Press the Power button
 - The green light will go on and the unit will boot up.
 - To shut off the unit, press the power button.
- 3) Driver installation
Windows Me and Windows XP Home Professional Edition,
Win2000 Professional SP 3 above

Users of Windows Me and Windows XP Home and Professional Edition, Win2000 Professional Service Pack 3 and above do not need to install any drivers. Windows will automatically detect your device as the following figure shows.



Windows 98/98 SE

1	Insert your driver installation CD into your CD-ROM drive and double click on "My computer".
2	Browse your CD-ROM drive and run " setup.exe " to begin driver installation. Press " Next " and follow the installation instructions.
3	Restart your computer after installation is complete.
4	Under Windows 98, the disk drives look like this:  CompactFlash III (G:) MMC/SD (H:) Local Disk (J:)

Macintosh MacOS 9.x

1	Insert your driver installation CD into your CD-ROM drive and double click on "My computer" Browse your CD-ROM drive to " MacOS Installer ".
2	Follow the installation instructions to being installing drives.
3	Restart your computer after installation is complete.


3-2 USB CONNECTION

When VP8390 connects to the computer, the " **MSC Device**" message will appear at the bottom of the screen.

During file transfer in PC mode **Do Not:**

1. Unplug the USB cable
2. Remove memory card(s) from the card slot, else corruption or data loss may occur.

Notes:

1. For Windows XP users, to safely disconnect the VP8390 from the computer, click on the system tray remove  icon and wait until you get a

message saying that you can safely unplug the device before disconnecting the USB cable.

2. To avoid battery drain, it is recommended to keep the unit plugged into the AC adapter / charger

3-3 Downloading or Editing the files on PC

- Power on the VP8390
- Connect the VP8390 to the PC with the provided USB cable
- Double Click the "My computer" icon, the system will display 3 icons identifying the media types correspondingly. Select the drive you want.
- You can now read, write, copy, delete and move data from/to the VP8390 drive.

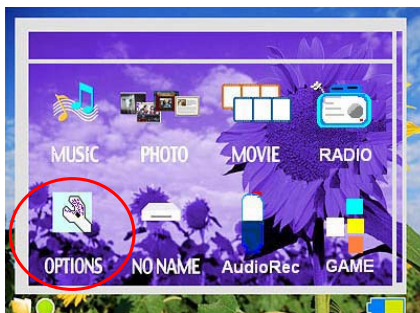
Note:

- The VP8390 uses the FAT file system, the maximum size of a single file is usually limited to 2GB
- When the USB mode is set to [MTP] mode, Windows will only display the VP8390 internal Hard Disk, there is no card reader function here.

4. Settings for your VP8390

4-1 Setup

To enter your setup screen, click OPTIONS then SYSTEM



SYSTEM	DISPLAY	VERSION
Language	English	
Auto Shutdown Timer		
Screen Saver Timer	OFF	
Copy Speed (HD)	NORMAL	
Copy Speed (CF)	NORMAL	
USB mode	MSC Device	
Time Zone	GMT UTC+0	
Date Time	2005/11/29 03:45:22	



1) Language

This unit can be set to English, Japanese, Korean, Spanish, German, French, Italian, Portuguese, Chinese and Thai.

2) Auto shutdown Timer

Press the joystick to adjust the setting, timed from 1 to 30 minutes. Scroll down to decrease the time value, scroll up to increase it.

3) Copy Speed (HD)

Use the joystick to adjust the setting, from Normal to High to Ultra.

Note: If you find that the unit shuts down after setting the copy speed to ULTRA or HIGH, it is recommended to set the copy speed to NORMAL to avoid data corruption.

4) Copy Speed (CF)

Use the joystick to adjust the setting, from Normal to High to Ultra.

Note: If you find that the unit shuts down after setting the copy speed to HIGH or ULTRA, it is recommended to set copy speed to NORMAL to avoid data corruption.

5) USB Mode

PictBridge: Print images from the VP8390 directly to a PictBridge-enabled printer.

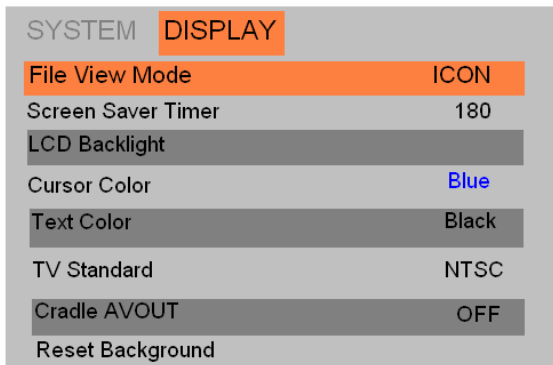
MSC Device (Mass Storage Class): General use as a card reader

6) Time Zone / Date Time

These show date and current local time.

4-2 Display

To set up your Screen Display, click Options and highlight Display by using the menu button.



1) File Viewer Mode

Using the joystick, you can swap between graphic icons file viewer mode and list view.

2) Screen Save Idle Timer

You can change the auto screen-off timer to save battery power by using the joystick. Values are between 0 to 180 seconds.

3) LCD Backlight

You can adjust the LCD backlight by using the joystick. Push down/up to decrease/increase brightness.

4) TV Standard

NTSC (Taiwan, US, Japan, etc.)

PAL (European countries)

Change these settings by using the joystick.

5) Cradle AVOUT :

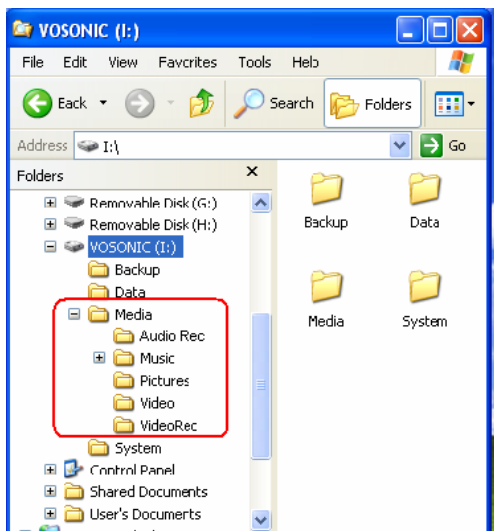
When set in cradle, the AV out connection allows the user to view and share the photos or movies on television.

6) Reset Background

Reset desktop background image to Vosonic's default logo.

4-3. Your Media files

For rapid search or playback of Videos, Music and Picture files, please import the files to the corresponding folders.



Media File Conversion

Because of the wide variety of formats, there's a chance that some of the media files you have will not directly play on your device. If you have video files that do not play directly on your VP8390, they will have to be converted first.

Please find the MAGIX MEDIA SUITE on the included CD-ROM. This program, developed by MAGIX (www.magix.com), has a simple interface which you can use to convert, edit, archive & burn video.

Note: To convert a video file to the right size and format supported by the VP8390, please consult the VP8390 specifications for supported file types, or email service@vosonic.com.tw for instructions.

5. Using a memory card to transfer photos to VP8390

Note: Please insert the memory card with the front of the card facing the LCD, as shown below.



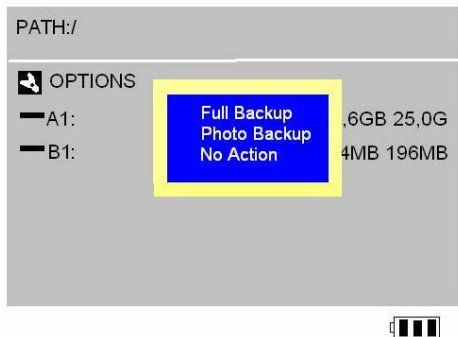
When a memory card is inserted, the system will automatically display a menu with the options "No Action", "Full Backup" or "Photo Backup".

1) **Full Backup**

You can backup the whole folder (including its subfolder and files) from memory card(s) to internal storage (Hard Drive Disk). To do so, scroll to the "Full Backup" mode and press the joystick button.

2) **Photo Backup**

The Photo Backup allows you to quickly search the digital images by saving the subfolder only. You can backup the subfolder from memory card(s) to internal storage (Hard Drive Disk). To do so, scroll down to the "Photo Backup" mode and press joystick button.

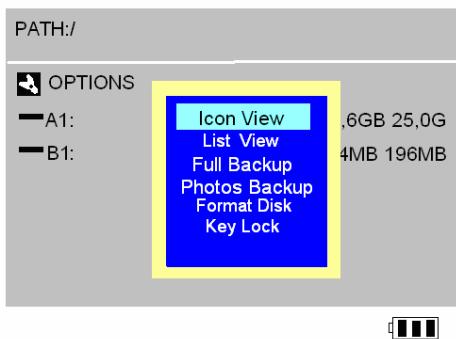


- If the same card is inserted and copied twice, two different folders will be created, VP8390 won't overwrite folders.
- All files transferred from each memory card are stored onto the Backup folder in numerically ascending order, "CF0000", "CF0001", "CF0002", "CF0003".
- To stop the data transfer, just press the Joystick or the ESC button.
- If an erroneous message is displayed, please re-format the memory card(s) first, this may be due to bad sectors.

3) No Action

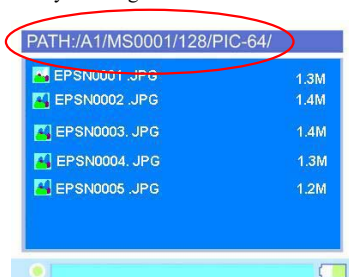
Escape from current mode.

If you want to return to the Photo / Full backup modes, just scroll the memory card that you want to backup and press MENU button.



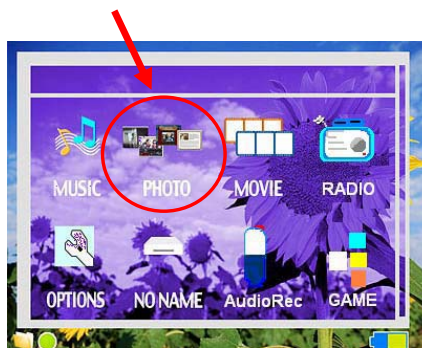
4) Navigating the Directory Structure

Just below the top status bar, you can see the path to the directory you are currently viewing.



6. Photo Play Mode

Enter Photo Folder



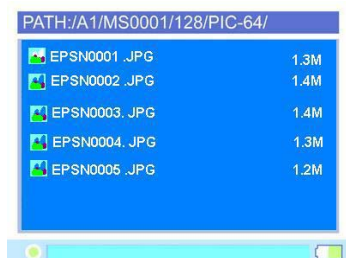
Press MENU to select the play modes, choose the desired mode and press the joystick.

Icon View / List View

Icon View: The screen displays thumbnails of all the JPEG pictures groups of eight.

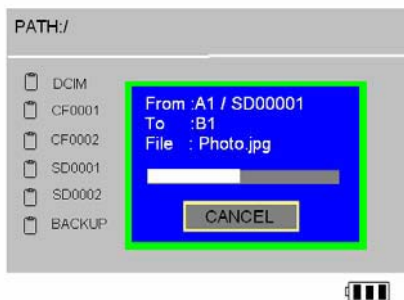


List View: The screen will display all the JPEG pictures as a list.



Copy

- Use the Joystick button to high-light the file you want to copy.
- Press MENU to select COPY mode, then press joystick.
- When the message “copied to clipboard“ pops on screen, press joystick.
- Use the joystick to find the folder or path where you want to paste.
- Press MENU to select Paste mode, then press joystick.
- At the prompt “Paste from clipboard?” use the joystick to reply Yes or No.
- Click “Yes” and the copy function will be performed.



Delete

- Use the joystick to find the file you want to delete.
- Press MENU to select Delete mode, then press joystick.
- At the prompt “Delete File?“, use the button to reply Yes or No.

Show EXIF and histogram

Click the specific JPG file you want to view. press ENTER, then press Menu. Select Display Settings and press OK. Find the Show EXIF and press OK to show file information such as shutter speed, flash condition, focal length and other image information.



Slide Show

Click the specific JPG file you want to view and press Menu to select Slide Show mode.

Slide Interval Setting:

- Hold and push the Joystick button to the left to decrease the interval time
- Hold and push the Joystick button to the right to increase the interval time

Set as Background

Click the specific JPG file you want and press Menu to find “Set as Background” mode, then press joystick.

Zoom In / Out Display

- You can use [+] or [-] buttons to zoom in/out of the picture.
- Use the joystick to pan right/left, up/down.



Rotate Display

- Press the joystick to rotate the picture in counter-clockwise direction.



Printer Setup

For Photos to be printed directly to printers, the printers must be Pictbridge compatible. If a printer is not Pictbridge compatible (or if it is not connected well to the unit), the VP8390 will display a “No Supported Printer” message.

Print

PictBridge technology allows you to connect your VP8390 directly to your printer without a computer. Just plug your VP8390 into the printer using the USB cable and you are ready to print

- Connect the USB cable to the main unit and printer.
- Turn on the VP8390

- Set the VP8390 USB mode at [PictBridge/Media Palyer]
- Find the specific JPEG pictures you want to print and press the MENU button
- Select [Print] and press the joystick

Note: The printing function is available only for JPEG files.

7. Video Play Mode

To make sure that your video file is in the right size and format supported by the VP8390, please read the VP8390 specifications first.

- Push up the joystick to fast forward the videos.
- Push joystick to the left to rewind and find the specific part of movie you want to play.
- Push joystick to the right to fast forward and find the specific part of movie you want to play.
- To pause or start/resume playback, press joystick.

Play Video Clips or Slideshow on your TV

- Click [Options] on the main menu
- Use [MENU] to go to [Display]
- Set [Cradle AVOUT] at ON
- Connect the A/V cable to the A/V OUT socket of the cradle
- Connect the AC adaptor to the cradle
- Turn on the VP8390 and your television.
- The screen on your VP8390 should go black.
- You should see the VP8390 screen now displayed on your television.

Note: The video Output Quality is :

PAL system : 352 X 288 pixels. NTSC system :320 X 240 pixels.

Play modes

Press the MENU to set the play modes

Playlist

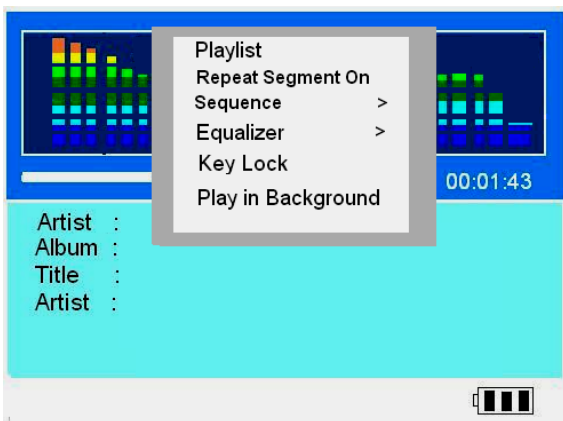
Playlist is a list of songs that the VP8390 will automatically play one after the other. To create Playlist, you can simply copy, delete or paste the files into the folder you want.

Play Mode

Press MENU to select the Play Mode.
Press joystick to set the setting.

8. Music Play Mode

Scroll to the MUSIC, press Joystick to finish the selection



Playlist

Playlist is a list of songs that the VP8390 will automatically play one after the other. To create Playlists, you can simply copy, delete or paste the files to the folder you want.

Create and use a music playlist

VP8390 can play the mp3 songs listed in an *.m3u* play list file. M3U is a media queuing format, known as a play list which will play sequentially each of the mp3 files in the order listed.

- Connect VP8390 to your PC using USB.
- Use Winmap to create a playlist.
- Save the playlist on the VP8390 on hard drive
- Save the playlist as m3u type of playlist (e.g., in the Save options pull-down menu).

Note: Please remember to set both the playlist and operating system to the same language, otherwise the M3U playlist won't be recognized.

Repeat Segment On (Loop replay user-defined sections of a song)

- When listening to music, press the joystick to set the starting point.
- Press the joystick again to set the ending point. The VP8390 will play the section in a loop.

Sequence

Shuffle:

- To shuffle the music in a random order, you can scroll to [Shuffle] and press the joystick. The shuffle only works within one folder.

Repeat All:

- Press MENU
- Click [Sequence], then select [Repeat All]
- Click it to set it ON, click again to set it OFF.

Repeat Single

- Press MENU
- Click [Sequence], then select [Repeat Single]
- Click it to set it ON, click again to set it OFF.

Play all

- Press MENU
- Click [Sequence], then select [Play all]
- Click it to set it ON, click again to set it OFF.

Equalizer

There are 8 EQ modes (Normal, Bass, Classic, Dance, Live, Rock, Treble and User defined) for your selection.

KeyLock

- To lock all the VP8390 buttons from being accidentally pressed, scroll to "Keylock" mode and press the joystick.
- Press MENU and ESC buttons to activate the buttons again.

Play in Background

Allows you to switch to other modes, such as watching photos simultaneously with the music being playing.

Other functions

- Push the joystick to the left to rewind and find the specific part of music you want to play.
- Push the joystick to the right to fast forward and find the specific part of music you want to play.

Adding songs to a Playlist while listening to Music

- After hiding the jukebox (Play in background)
- Switch to other folders and highlight the music file you want, press menu to select the [Add to Playlist] and press ok button. The song will be added to the current playlist.

9. Video Recording

With your cradle properly connected to a TV, DVD or satellite receiver, making a recording is a simple affair. (Please make sure your TV has A/V output.)

1. Power on the VP8390.
2. Go to [Options] and set [USB mode] at PictBridge / Media Player
Go to [DISPLAY] and set [Cradle AVOUT] to OFF.
3. Connect the A/V cable with the 3 RCA plugs to the A/V input of the cradle



A/V cable with 3RCA plugs

4. Connect the other end to the A/V output socket of the TV set.
5. Connect the AC adapter to the cradle.
6. Select [VideoRec] and press joystick to record. While recording, the recording time will be displayed in the top right corner of the screen.
7. Press joystick again to stop recording.

Setup Parameters



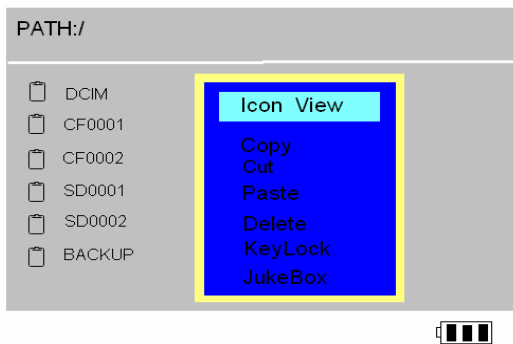
<i>Video Record List</i>			
Schedule 1			
Storage			HD
Quality	320X240		Normal
Start Time	2006/01/01	08:15	
End Time	2006/01/01	08:15	

Note:

- Due to the Windows® FAT32 AVI file type specification, the maximum recording file size is 2GB.
- All recorded videos will be saved incrementally as VREC0001.MP4, VREC0002.MP4, VREC0003.MP4, etc.

10. Copy, Paste and Delete Files and Folders

In screen Browser mode, you can copy, paste or delete files from one location in the file-tree structure to another. Simply Press MENU to select the modes. As you finish the selection, just press joystick.



11. Listen to FM Radio

Connect the earphones to earphone jack. The earphones act as the FM antenna.

Presetting a Channel

Automatically scan from channel to channel:

- Select Radio
- Press MENU
- Select [Scan and Save] mode.

The tuner will stop scanning at the first receivable broadcast station.

- The current FM station will be set to a preset channel number. You can store up to 18 stations in memory.
- There are two groups (**GROUP1** and **GROUP 2**) where each group can save up to 9 channels.
- To stop auto tuning, press the [ESC] button.

Note: This function may sometimes fail do to bad reception of some channels.

- The radio setting will be saved in the system folder under Hard Drive as RADIO.INI, please do not remove this folder, or the settings will be lost.

12. Audio Recording

You can use the “Record” function any time. However, you cannot record voice streams and listen to music at the same time.

Adjusting the volume to the right values is very important for proper, undistorted recordings, it is better to choose a middle-way setting so that the signal is not too high (it will be clipped), nor too low to get lost in the noise level of the hardware.

All recording files are saved in the AudioRec Folder
All recording files are saved as AAC format.

Enable / Disable AOUT (Audio Output: ON / OFF)

Enables you to monitor the file which is being recorded.

Recording Quality

M: Middle

L: Low

There are two different channels- **Stereo, Mono** for line-in recording, for voice recording, here is only one channel- **Mono**.

Recording from built-in microphone

1. Select AudioRec and press joystick
2. Press MENU and use joystick to set the REC INPUT at [MIC- In].
4. Press joystick to start the recording
5. Press joystick again to stop the recording.

Recording from Line-in

You can use a line-in cord to record music directly from an audio device (such as CD player)

Remember to keep the AC adaptor plugged in throughout the recording

- Connect line-in cable to audio output of the source
- Connect the other end to VP8390 cradle AV input
- Scroll to [AudioRec] and press [Joystick
- Press MENU and use joystick to set the REC INPUT at Line-in
- Press joystick to start the recording
- Press joystick again to stop the recording

Note: Some CDs are copy-protected and the VP8390 will not be able to record from these sources.

Recording FM radio

- Use the joystick to find a desired channel/station
- Select Radio and press MENU
- Select Record mode
- Press the joystick to start recording

13. Text files Reader

Format: txt

Reads text files in 9 different languages as an E-Book.

14. Game

Play the Matrix game at different speeds and up to 9 different levels.

- Select level by pressing up or down when entering the game
- Control directions: left, right, and down
- Press MENU to pause

15. Battery Recharge

To charge the batteries, please connect the AC adapter plug to the DC 5V input socket of the main unit. When the Power Led indicator goes off, the battery is fully charged.

Please use only the **Vosonic original 2300mAh 3.7V rechargeable Li-ion battery**

For additional battery packs, please contact your dealer or directly from Vosonic.

16. Erroneous display / operation

- When the copy error message pop on screen, there may be a chance of corrupted data or the memory card may be damaged. Please re-format your memory card.
- In case of a shut-down caused by erroneous operation, please reset the unit by depressing the [reset] button located on the right side of the main unit.
- If the unit is linked via USB to the PC while the battery is low, erroneous displays / operations may occur. If this happens, unplug the USB cable, and reset the unit.

17. Hard Drive and memory card

- To keep your hard drive in good operating shape, we recommend to periodically run Scandisk and Disk Defragmenter from your computer.
- Hard Drive must be formatted to the FAT or FAT-32 file system, the NTFS format is not compatible with this unit.
- If the computer or VP8390 cannot detect the Hard Drive, check that the flat connector is plugged securely
- It is not recommended to format 32GB or above Hard Drives under Windows 2000 or Windows XP

Note: Win 2K/Win XP cannot format the 30GB or above Hard Drive with FAT format.

- Please don't use force when connecting the USB cable with the unit.
- Insert and remove the memory card from each slot with care.
- Do not shake or expose the unit to shock or severe vibration while data is being transferred.

- To reduce the risk of electronic shock, do not remove back cover.
- To reduce the risk of fire or shock hazard, do not expose this equipment to rain, liquid or moisture.
- To avoid any danger to the environment and to human health, please do not dispose of the electronic device in the regular trash bin but at designated collection points.



18. Hard Drive Assembly Chart

1. Use the supplied mini screwdriver (Philips head) to remove the 2 back cover retaining screws.



2. Slightly lift the right side back cover.



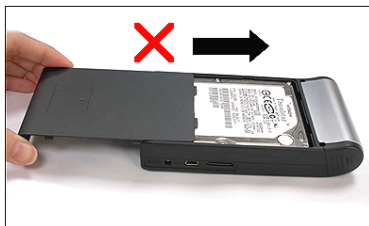
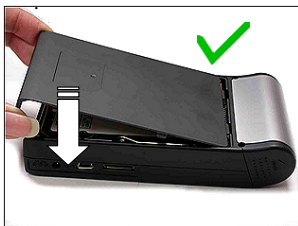
3. Use your finger nail (to avoid scratching the case) to open the side clip.



4. Carefully slide the HDD into the IDE connector. Take care not to bend the connector's pins, else the HDD will not function.



5. Place (*do not slide*) back the cover



19. Formatting the Hard Disk without a PC

WARNING

- ◆ When you partition and format a hard disk, all data on that partition is permanently deleted.
 - ◆ If the hard disk already contains data, please backup the data first.
 - ◆ The Hard Disk will be formatted as FAT file system
-
- Select the Hard Disk icon and press MENU
 - Select Format Disk option and press the joystick. Disk formatting will be performed.

20. Troubleshooting

WARNING

Under no circumstances should you try to repair the system yourself, as this will invalidate the warranty. Do not open the system as there is a risk of electrical shock. If a fault occurs, first check the points listed below before taking the system for repair. If you are unable to remedy a problem, consult your dealer or service center.

Problem	Solutions
USB Connection issues	<ul style="list-style-type: none">◆ Under Windows 98SE, first install the driver from the supplied CD <i>before</i> connecting the VP8390 to the PC.◆ Instead of using a USB port in the front of your computer, try a USB port at the back. Front USB ports are often non-powered and only USB1 compatible.◆ If using a laptop computer and a docking station, try connecting without the docking station.◆ If you cannot see on your PC the files you have copied to the VP8390 via the USB, you must properly remove (un-mount) the VP8390 from the computer <i>before</i> disconnecting the USB cable to avoid loss of data or “freezing” the computer and/or the VP8390.◆ If the VP8390 HDD icon does not show up in Windows for over minute, the VP8390 HDD’s Files Allocation Table (FAT) may be corrupted. You can use the Format Function on the VP8390 to re-format the Drive but note that <i>it will erase ALL data on your VP8360.</i>

<p>Macintosh™ OS issues</p>	<ul style="list-style-type: none"> ◆ MacOS 10.0.x does not adequately support FAT volumes. Upgrading to version 10.1 or later is mandatory. ◆ The FAT-32 format made by MacOS 10's Disk Utility is incorrect. Formatting must be done under MacOS 9. ◆ The FAT volumes do not appear or disappear until after the mouse has been moved.
<p>Data corruption, General Error, Can't open Source File</p>	<ul style="list-style-type: none"> ◆ If the File Allocation Table (FAT) is corrupted, the data transferred to the VP8390 from a memory card may appear faulty. Please backup the data and run ScanDisk, Disk Defragmenter or reformat the memory card (but note that <i>it will erase ALL data on your memory card</i>). ◆ If the browser shows a “?” sign, it indicates that it is not one of the standard file types which the system supports or can play.
<p>Formatting and partitioning</p>	<ul style="list-style-type: none"> ◆ To work in the standalone mode, both the disk and the memory cards must be formatted to the FAT or FAT-32 file systems.
<p>Video Playback</p>	<ul style="list-style-type: none"> ◆ Un-synchronized playback may occur due to the original video being encoded in NTSC format while your VP8390 is set to display the output as PAL (see the system display settings) or vice versa. Try changing this to the other setting.
<p>Operation freezes or Stops</p>	<ul style="list-style-type: none"> ◆ Press Reset to turn off the device, then turn it on again. ◆ If you get abnormal freezes from a video /audio playback, call our technical support hotline or email to service@vosonic.com.tw

21. Frequently Asked Questions

Problem	Solution
Why can't I hear music?	<ul style="list-style-type: none"> ◆ If the player plays a video or music file and you don't hear anything, then there may be a problem with your speakers or headphones. If you can hear other sounds through your speakers then there might be a problem with our source file. If you feel the latter is the case, then please contact us and provide us with as much information as you can.
The system does not react when buttons are pressed	<ul style="list-style-type: none"> ◆ Remove and reconnect the AC adapter plug and switch on the system again
The remote control does not function properly	<ul style="list-style-type: none"> ◆ Reduce the distance between the remote control and the system ◆ Insert the battery with the polarity (+/- signs) aligned as indicated. ◆ Replace the battery ◆ Point the remote control directly toward the IR sensor on the front of the system.
How can I get an extra battery for my VP8360	<ul style="list-style-type: none"> ◆ Contact your original dealer or email to service@vosonic.com.tw
How do I browse my files on the VP8360 while playing music?	<ul style="list-style-type: none"> ◆ You can browse your files while listening to a MP3, WMA or WAV music file only. While your music is playing, press MENU and select "Play in Background" mode. <p>Note: This feature is only available during Music playback</p>
When I play videos on my TV, the picture image has no color and/or is distorted, why?	<ul style="list-style-type: none"> ◆ USA and Europe use different TV systems. NSTC standard is used in the USA and PAL standard is used in Europe. Enter OPTIONS and select DISPLAY to set your VP8390 to the TV standard required in your country.

How to update the firmware for my Vosonic

- **VISIT VOSONIC ON THE WEB**

Go to <http://www.vosonic.com/> to download the latest firmware

The latest version of this manual may also be available on Vosonic's website

- **CONTACT VOSONIC**

To help Vosonic to promptly answer your questions, please have your product's model number, serial number, firmware version and your contact information when you call / send an email to Customer Service (service@vosonic.com.tw). The S/N and model number are on the back of your VP8390 case.

- **REGISTER A MEMBER AT Vosonic CLUB**

The easiest way to communicate and share your experience with other users is to register as a Vosonic members at Vosonic Club

<http://www.vosonic.twmail.net>



VOSONIC TECHNOLOGY CORPORATION

To process a request for RMA Service, the following information must be provided.

Model No: _____

S/N No: _____

User Name: _____ Tel: _____

E-mail: _____

Return Address: _____

Problem Description: (For User)

Returned Product Detail: (For Manufacturer)

Dealer information:

Index

Introduction and Warranty details.	2
Specifications	5
Overview of panels & keys	9
Using the VP8360	10
Settings	13
Using memory cards	17
Photos	19
Video	23
Music	24
Video recording	26
Working with Files and Folders	28
FM Radio	28
Audio recording	29
Text Files	30
Game	31
Battery recharge	31
Error messages	31
Hard Disk and memory cards	32
Hard Disk Assembly Chart	33
Hard Disk formatting	35
Troubleshooting	36
FAQ	38
Firmware upgrade	39

THANK YOU FOR CHOOSING THIS PRODUCT

We hope it will provide you with years of trouble-free enjoyment. Please look after your Vosonic. If you experience problems and cannot find solutions in the previous sections, please contact your dealer or check for updated firmware at

www.vosonic.com

or email to

service@vosonic.com.tw

The Vosonic Team

Free Manuals Download Website

<http://myh66.com>

<http://usermanuals.us>

<http://www.somanuals.com>

<http://www.4manuals.cc>

<http://www.manual-lib.com>

<http://www.404manual.com>

<http://www.luxmanual.com>

<http://aubethermostatmanual.com>

Golf course search by state

<http://golfingnear.com>

Email search by domain

<http://emailbydomain.com>

Auto manuals search

<http://auto.somanuals.com>

TV manuals search

<http://tv.somanuals.com>