

Instruction Manual



Table of Contents

Crafted for Life.	2
Watch Components	3
General Features and Components	4
Operating Instructions (all features not available on all watches)	
Standard Three-Hand Watches	6
Automatic Watches	8
Dual Sub-dial Watches	11, 13
Swing-out Compass Watch.	14
Dual Time Zone Feature	16
Watch with Alarm	17
Additional Features.	18
Caring For Your Watch.	19
Warranty Information.	20
Warranty Service Instructions	21
Registration Form.	22

Crafted For Life

Delémont, Switzerland 1893

Over a century ago, Wenger built a factory in this tiny Swiss village and transformed it into production headquarters for the Genuine Swiss Army Knife™ still used by the Swiss Army today. As it was 100 years ago, each tool, implement and knife manufactured by Wenger is crafted by hand in solid stainless steel and each individually inspected for quality and craftsmanship. This same attention to detail has been applied to genuine Wenger watches. Wenger watches are Swiss-designed, -engineered and -crafted with only the most accurate Swiss movement available. Each watch is constructed with form and function that last a lifetime. As with the genuine Swiss Army knife, Wenger watches are durable, high quality, and versatile enough for use on any occasion. Wenger watches are engineered to provide the same resourcefulness as the genuine Swiss Army knife, supplying functionality beyond the everyday.

Wenger Watch Components

Movements – Swiss quartz movements or 25-Jewel Swiss Automatic movement.

Case Body – All stainless steel or titanium for quality and durability.

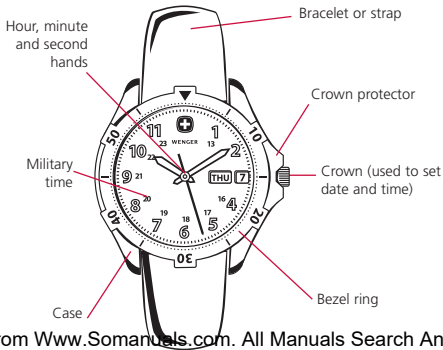
Water-Resistant – To 50m (165') or 100m (330') for standard watches. To 200m (660') or 1000m (3300') for dive watches.

Straps/Bracelets – Stainless steel and titanium bracelets feature dive buckles or deployant jewelry buckles. Straps are offered in genuine calfskin leather, specially treated rubberized leather, water-resistant rubber or nylon, or other high-quality materials.

Luminous Markers – Hands, markers, and numerals may be overlaid with Super Luminova® which recharges in seconds when exposed to direct sunlight for extended nighttime visibility.

Crystals – The crystal is the clear surface which covers the watch dial.

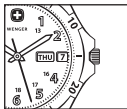
General Features and Components



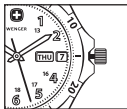
Optional Features

- Rotating bezel measures elapsed time
- Tachymeter measures speed over a known distance
- Date display window (may offer magnified display window or dual numeral "Big Date" window)
- Day of the week display window
- Screw-down crown for added water resistance
- Dual time zone option to track time in two known time zones
- Alarm
- Swing-out compass
- Military time features printed 24-hour indicators
- Push-button release clasp
- Mother-of-Pearl dial
- Automatic watches – these are wound and powered by the natural motion of your arm and wrist.

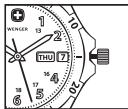
Position 1



Position 2



Position 3



Setting the Time and Date on Standard Watches (see Table of Contents on p.1 for other watches)

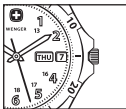
Important note: If the crown of your watch does not pull directly out or if your watch is water-resistant to 200m, then you may have a watch with a screw-down crown. Rotate the crown counterclockwise until the crown moves away from the watch. This will set the crown in Position 1. Always screw down the crown after making any adjustments. This is very important as the screw-down crown assures water resistance.

1. Pull out the crown to Position 2 (one "click" out). Rotate crown counter-clockwise until the date shows one day earlier than the date you want to set.
2. Pull out the crown to Position 3 (two "clicks" out). Rotate crown so the watch hands move clockwise until the current date shows. Then set the watch hands to the correct time. Turn the watch hands past 12 once if you're setting the watch for a P.M. time. Push the crown back to Position 1.
3. For a watch with day and date display, pull out the crown of the watch to Position 2, turn it clockwise to change the day and counterclockwise to change the date.
4. Return the crown to the fully depressed Position 1, assuring the crown has been further screwed down on all 200m watches.

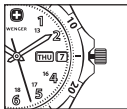
For Watches Without a Date Display

1. To set the time for watch without date display, pull out the crown to Position 2. Turn the crown either clockwise or counterclockwise to set the correct time.
2. Return the crown to the fully depressed Position 1, assuring the crown has been screwed down on all 200m watches.

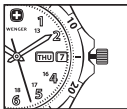
Position 1



Position 2



Position 3



Setting the Time and Date on Automatic Watches (see Table of Contents on p.1 for other watches)

- 1.** Pull out the crown to Position 2 (one “click” out). Rotate crown clockwise until the date shows one day earlier than the date you want to set.
- 2.** Pull out the crown to Position 3 (two “clicks” out). Rotate crown so the watch hands move clockwise until the current date shows. Then set the watch hands to the correct time. Turn the watch hands past 12 once if you’re setting the watch for a P.M. time. Push the crown back to Position 1.

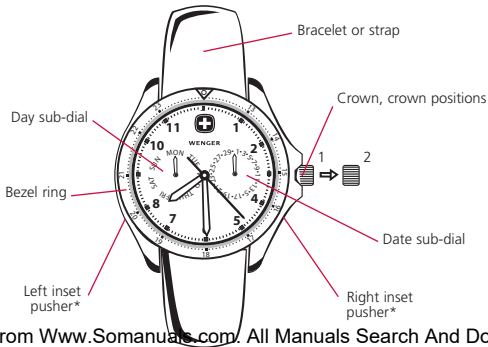
(continued next page)

3. For a watch with day and date display, pull out the crown of the watch to Position 2, turn it clockwise to change the day and counterclockwise to change the date.
4. Return the crown to the fully depressed Position 1, assuring the crown has been further screwed down on all 200m watches.

Stopped Automatic Watches

If the watch is not worn it will wind down and stop. We suggest the following procedure to start an automatic watch which has stopped. With the crown in Position 1, wind the crown clockwise for approximately 30 seconds, and the watch will start.

Day and Date Dual Sub-Dial Watch



Setting the Time and Date of Dual Sub-dial Watches

Set the Time

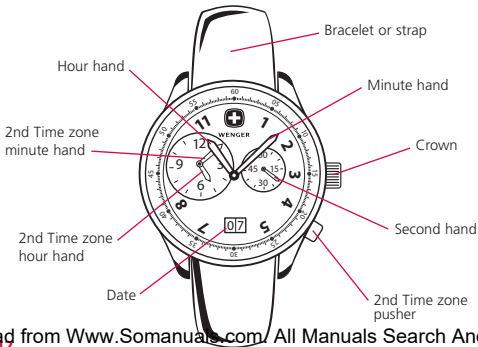
1. Pull out crown to position 2.
2. Rotate crown clockwise to set the time.
3. Return crown to position 1.

Set the Date

1. Pull out crown to position 2.
2. Set time to 6:00 by rotating the crown.
3. Use left inset pusher* to set current day.
4. Use right inset pusher* to set current date.
5. Rotate crown counter-clockwise to set current time. Turn the watch hands past 12 once if you're setting the watch for a P.M. time.
6. Return crown to position 1.

*please use a blunt object, such as a pen tip, to operate the inset pushers.

2nd Time Zone Dual Sub-Dial Watch



Setting the Time and Date of 2nd Time Zone Dual Sub-Dial Watches

Setting the Primary Date and Time (Large minute and hour hands)

See pages 6-7 for complete instructions.

Setting the 2nd Time Zone

1. Depress the 2nd time zone pusher for at least 2 seconds and release. The minute hand will automatically advance one minute.
2. Depress the pusher **again** and hold it down to advance the minute and hour hands. The longer the pusher is depressed, the faster the time will advance.
3. If you do not depress the pusher for 10 seconds your watch will automatically exit the setting mode.

Operating Instructions for Swing-Out Compass Watch

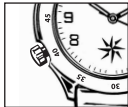
Setting the Date

1. Pull out the crown to Position 2 (one "click" out). Rotate crown counter-clockwise until the date shows one day earlier than the date you want to set.
2. Pull out the crown to Position 3 (two "clicks" out). Rotate crown so the watch hands move clockwise until the current date shows. Then set the watch hands to the correct time. Turn the watch hands past 12 once if you're setting the watch for a P.M. time.
3. Return the crown to the fully depressed Position 1.

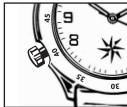
Position 1



Position 2

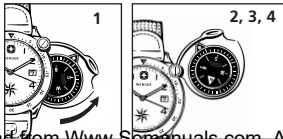


Position 3



Operating the Compass

1. Swing-out side of case to reveal compass.
2. Lay the compass on a flat surface for best results.
3. Your compass will adjust to accurately reflect orientation within 30 seconds, the arrow may undergo some movement during this period. Once still, the red arrow will be pointing North.
4. Your compass now accurately reflects your orientation.



Dual Time Zone Feature (2nd Time Zone Dual Sub-Dial, see page 12)

Note: The second time zone is read in military time (1:00 p.m. = "13", 2:00 p.m. = "14", etc.). The military time hours appear either on the dial, or on some models, on the bezel of the watch.

1. Begin by setting the regular time by following the instructions on pages 6 and 7.
2. To set the second time zone, pull out the crown to Position 2 (one "click" out) and set the second time zone hand (indicated above in red) by turning the crown clockwise.
3. Return the crown to the fully depressed Position 1, assuring the crown has been screwed down on all 200m watches.



Watch with Alarm



1. Begin by setting the regular time by following the instructions on pages 6 and 7.
2. Pull crown out to Position 2.
3. Rotate crown clockwise to set alarm hand (indicated in red) at desired alarm time.
4. Pull out alarm button (located at either 2 o'clock or 11 o'clock) to set alarm. You will hear a brief signal acknowledging that the alarm is set.
5. Return crown (not the alarm button) to Position 1. Alarm will sound when hour hand passes alarm hand.

Note: Do not expose watch to moisture when alarm button is pulled out. Push in alarm button to stop alarm at any time. If alarm button is not pushed in, alarm will sound once, pause and then sound ten times and stop. Push alarm button in to stop or alarm will sound again in 12 hours.

Additional Features

(All features may not be available on all models)

Rotating Bezel

This feature enables you to track elapsed time.

1. Turn the bezel counterclockwise until the zero indicator (60) is at the minute hand.
2. The position of the minute hand in relation to the zero indicator on the bezel will indicate the total number of minutes elapsed.

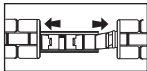
Deployant (Jewelry) Clasp

Deployant closures are used to assure a secure fit of your watch and easy opening and closing. Deployant closures on straps allow for a one-time fitting instead of refitting each time the watch is worn.

Deployant Buckles on Bracelets

Deployant buckles on bracelets are generally double deployant, or two-sided to hide the buckle and give the bracelet a seamless appearance.

1. Have the watch fitted by a professional jeweler and the appropriate links removed.
2. Gently pull on either side of the clasp to open, or press down to close.



Caring for Your Watch

Even though your watch is water-resistant, it is not recommended that you wear it in a hot shower, sauna or hot tub. We suggest sending your Wenger watch to our Customer Service Center for battery replacement (please see procedure under "Warranty Service"). Batteries should only be replaced by a professional jeweler to maintain the watch's water-resistancy. If your watch has a bracelet, we suggest you see a jeweler for any sizing adjustments.

3-Year Limited Warranty

Wenger is proud to stand by our quality Swiss craftsmanship with a 3-Year Limited Warranty. This Wenger watch is warranted to the original consumer/purchaser against breakage or malfunction under normal use due to defects in material or workmanship. This 3-Year Limited Warranty also includes all components and craftsmanship of the Swiss movement and watch case. We will repair, or at our option, replace any defective Wenger watch with the same or comparable model. We will refund the purchase if repair or replacement is not commercially possible. The warranty will become null and void if the timepiece is misused, abused, tampered with or taken apart, or if the timepiece is repaired by anyone other than an authorized dealer. The warranty is not extended to the watch strap, bracelet, finish, crystal or battery. The warranty does not cover any incidental, consequential or special damage arising from any or all uses of the Wenger watch. Wenger watches must be repaired by an authorized dealer or the warranty is void. Some states do not allow the exclusion or limitations of incidental, consequential or special damages, so the above limitations may not apply.

Warranty Service

In the United States, please send your watch to: WWRC, 15 Corporate Drive, Orangeburg, NY 10962. Please include a check or money order payable to Wenger NA in the amount of \$10(US) to cover the cost of return shipping and handling (California residents exempt). If your warranty has been rendered void as a result of non-compliance with above warranty restrictions, we will send you an estimate before any repairs are made. When sending your watch to our Service Center, please pack it securely. We suggest insuring the shipment as Wenger NA cannot be responsible for packages not received by the company. Be sure to include your name, mailing address, phone number, email address, proof of purchase and a brief description of the problem. Wenger is not responsible for damage or loss in shipping. Note: Do not send watch boxes. If you have questions or concerns, please call 800-267-3577 or 800-447-7422 to speak to a Customer Care Associate. You may also visit us on the web at www.WengerNA.com or contact us via e-mail at Custsvc@WengerNA.com. In Canada call: 888-838-1504. Outside the U.S. or Canada, please visit www.Wenger.ch for further instructions.

Wenger Watch Registration

For your convenience you can **register online** at www.WengerNA.com/warranty or complete the form below and mail it to the address on the back.

Name/Nombre: _____

Address/Dirección: _____

City/Cuidad: _____

State/Estado: _____ Zip Code/Código Postal: _____

Email: _____

Date Acquired/Fecha de Adquisición: _____

Gift/Regalo Purchase/Compre

Where Purchased/Lugar de Compre: _____

Notes: _____

Notes: _____

Wenger N.A.

15 Corporate Drive · Orangeburg, NY · 10962 · USA

Tel: 800-431-2996, 845-365-3500

Fax: 845-425-4700 (General correspondence)

845-365-3743 (Orders only)

Web: www.WengerNA.com

SINCE
1893



WENGER®

MAKER OF THE GENUINE SWISS ARMY KNIFE™

Download from www.Sematerials.com. All Manuals Search And Download

Free Manuals Download Website

<http://myh66.com>

<http://usermanuals.us>

<http://www.somanuals.com>

<http://www.4manuals.cc>

<http://www.manual-lib.com>

<http://www.404manual.com>

<http://www.luxmanual.com>

<http://aubethermostatmanual.com>

Golf course search by state

<http://golfingnear.com>

Email search by domain

<http://emailbydomain.com>

Auto manuals search

<http://auto.somanuals.com>

TV manuals search

<http://tv.somanuals.com>