

Secure Power Management & Control

Meter, Monitor, Report & Control Power on Network Equipment

Power Control & Management:

- Remote Individual Outlet Switching
- On/Off/Reboot/Default/Load Shed Switching
- Scheduled On/Off/Reboot Switching
- User-Defined Power-Up Default Status and Sequencing
- Alarm, User Audit, Current, Voltage, Watts and Temperature Logging
- Plug Naming, Grouping & Access Control
- Command Logging with Audit Trail

Metering/Monitoring/Reporting:

- True RMS Current Metering
- Reports kWh, kW, Amps, Volts, Temperature
- Display via Local or Remote LED, Web Interface, SNMP, Command Line
- Threshold Alarms for Advanced Branch Circuit Protection
- Graphing of Current/Voltage/Watts/Temperature Live, Weekly, Monthly, Yearly Readings
- Ping Watchdog with Auto Reboot
- Alarm Notification via Email, SNMP, SYSLOG

Access/Security:

- Full MIB Support
- SNMP(V1, V2, V3)
- SSL Web Browser
- SSHv2 Encryption
- (4) User Access Levels
- 10/100 BaseT Ethernet Port
- LDAP, Kerberos, RADIUS, TACACS
- (3) Aux Ports – Control up to 80 outlets via one IP Address

Power Distribution:

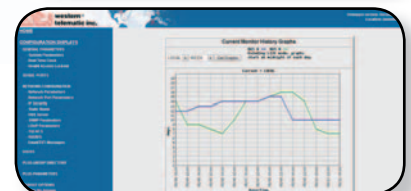
- Branch Circuit Protection
- Single/Dual 16/20/30/32Amp Input Models
- 1.4 kW to 12.8 kW Delivery (80% Derated)
- Various Input Cable Styles – Order Separately
- Cable Retainers
- Horizontal & Vertical Zero-U Models



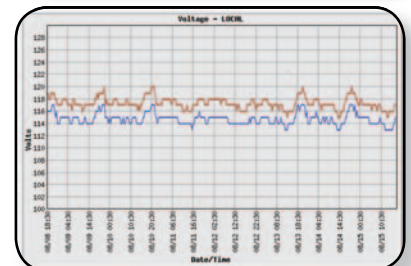
MPC-20VS32-3
5.8 kW @ 230V



- ✓ Made In USA
- ✓ 5 Year Warranty
- ✓ Free Online Demos
- ✓ Stocked for Same Day Shipments
- ✓ In-House Design & Manufacturing



Status Displays:
Current, Voltage, Watts,
Temperature History Graphs



MPC-20V Series: Managed Power Controllers

Specifications

Model Number	AC Voltage 50/60 Hz	Watts (80% Derated)	Input Feeds	Receptacles	Power Cord	Branches Per Input
--------------	------------------------	------------------------	-------------	-------------	------------	-----------------------

Single Power Input

MPC-20VS20-1	85/125V	1.4/2 kW	(1) 20 Amp	(20) NEMA 5-20R	Detachable (Sold Separately)	(4) UL 489
MPC-20VS30-1	85/125V	2.1/3 kW	(1) 30 Amp	(20) NEMA 5-20R	NEMA L5-30P (10ft)	(4) UL 489
MPC-20VS20-2	200/250V	3.2/4 kW	(1) 20 Amp	(20) IEC 60320 C13	Detachable (Sold Separately)	(2) UL 489
MPC-20VS30-2	200/250V	4.8/6 kW	(1) 30 Amp	(20) IEC 60320 C13	NEMA L6-30P (10ft)	(2) UL 489
MPC-20VS16-3	200/250V	2.6/3.2 kW	(1) 16 Amp	(20) IEC 60320 C13	Detachable (Sold Separately)	(4) UL 489
MPC-20VS32-3	200/250V	5.2/6.4 kW	(1) 32 Amp	(20) IEC 60320 C13	IEC 60309 Blue(10ft)	(4) UL 489

Dual Power Input

MPC-20VD20-1	85/125V	2.8/4 kW	(2) 20 Amp	(20) NEMA 5-20R	Detachable (Sold Separately)	(2) UL 489
MPC-20VD30-1	85/125V	4.1/6 kW	(2) 30 Amp	(20) NEMA 5-20R	NEMA L5-30P (10ft)	(2) UL 489
MPC-20VD20-2	200/250V	6.4/8 kW	(2) 20 Amp	(20) IEC 60320 C13	Detachable (Sold Separately)	(1) UL 489
MPC-20VD30-2	200/250V	9.6/12 kW	(2) 30 Amp	(20) IEC 60320 C13	NEMA L6-30P (10ft)	(1) UL 489
MPC-20VD16-3	200/250V	5.2/6.4 kW	(2) 16 Amp	(20) IEC 60320 C13	Detachable (Sold Separately)	(2) UL 489
MPC-20VD32-3	200/250V	10.3/12.8 kW	(2) 32 Amp	(20) IEC 60320 C13	IEC 60309 Blue(10ft)	(2) UL 489

Detachable Power Cords & Accessories

WTI Part #	Supply End	Equipment End	Rating
DPC-19-515P-6FT	NEMA 5-15P	IEC 60320 C19	15A/125V
DPC-19-520P-8FT	NEMA 5-20P	IEC 60320 C19	20A/125V
DPC-19-L520P-8FT	NEMA L5-20P	IEC 60320 C19	20A/125V
DPC-19-620P-8FT	NEMA 6-20P	IEC 60320 C19	20A/250V
DPC-19-L620P-8FT	NEMA L6-20P	IEC 60320 C19	20A/250V
DPC-19-UK-2.5M	BS 1363	IEC 60320 C19	16A/250V
DPC-19-COM-2.5M	IEC 60309	IEC 60320 C19	16A/250V
DPC-19-SHKO-2.5M	CEE 7/7	IEC 60320 C19	16A/250V
DEC-19-14-6FT	C14	IEC 60320 C19	15A/250V
DEC-19-20-8FT	C20	IEC 60320 C19	20A/250V
MPC-Display	Remote LED Display Extension (RJ-45)		



MPC-Display: Via RJ-45, remotely display outlet status, amps, volts, watts & temperature of MPC units when mounted in hard to reach areas.

MPC-20Vxxx-x

Mounting	Vertical Zero U
Dimensions	W: 4.5" (11.4 cm) D: 3.2" (8.1 cm) H: 31" (78.7 cm)
Shipping Weight	≈14 lbs (6.36 Kgs)
Operating Temp.	32°F - 122°F (0°C - 50°C)
Humidity	10-90% RH
Ethernet:	10/100 BaseT
Console:	DB9M, RS232C
Aux/Link:	(3) RJ-45, RS232C
Remote Display:	(1) RJ-45, RS232C
Approvals:	FCC, UL, CE (230 VAC Units) IEC/UL 60950-1



western telematic incorporated

5 Sterling • Irvine • California 92618-2517

TOLL FREE: (800) 854-7226 • TEL: (949) 421-4199 • EMAIL: info@wti.com • WEB: www.wti.com

© Copyright 2008 Western Telematic, Incorporated. NetReach is a trademark of Western Telematic, Incorporated

0308-MPC20V

Free Manuals Download Website

<http://myh66.com>

<http://usermanuals.us>

<http://www.somanuals.com>

<http://www.4manuals.cc>

<http://www.manual-lib.com>

<http://www.404manual.com>

<http://www.luxmanual.com>

<http://aubethermostatmanual.com>

Golf course search by state

<http://golfingnear.com>

Email search by domain

<http://emailbydomain.com>

Auto manuals search

<http://auto.somanuals.com>

TV manuals search

<http://tv.somanuals.com>