

**SUPPLEMENTAL INSTRUCTIONS FOR AK-1-50 FRAMELESS BREAKER**

**FOR BREAKERS: AK-1-50 -9 (FRAMELESS)**

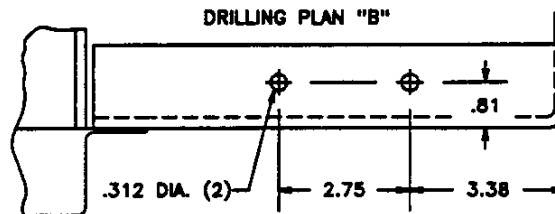
**1. Supplemental parts 8258A11G01 include:**

Trip Unit Mounting Bracket	Quantity 1	Support Clip	Quantity 1
PT Module Warning Nameplate	Quantity 1	.250-20 X 1.0 Hex Bolt	Quantity 3
.250 Washer Std. Stl.	Quantity 6	.250 Lock Washer Std. Stl.	Quantity 3
.250-20 Hex Nut	Quantity 3		

**2. Substitute the following steps for those that appear in IL33-856-2:**

**Step 3a. (page 1):** Install the Sensor Mounting Angle on the top rear of the breaker with the hardware provided as shown. Exception: Use the round holes in the mounting angle instead of the slots.

**Step 7a. (page 4):** Do not use DRILLING PLAN "B" or Step 7a from IL33-856-2. Locate and drill two .312 diameter holes in the top flange of the bottom right breaker channel. See DRILLING PLAN "B" below. Mount the Trip Unit Mounting Bracket on top of breaker channel with the hardware provided.



**Step 8b. (page 4):** Exception: The Microswitch must be attached to the Mounting with the Actuator on top nearest to the large hole and facing in the same direction. (It is shown in the picture with the Actuator on the bottom.)

**Step 8c. (page 5):** Do not use Step 8c from IL33-856-2. Remove the warning nameplate from the PT Module and replace it with the PT Module Warning Nameplate provided with the supplemental parts kit.

**Step 8g. (page 5):** Do not use Step 8g from IL33-856-2. Mount the Trip Unit Assembly to the mounting bracket using the hardware provided in the top and bottom holes. Mount the Support Clip to the breaker using the top right screw that holds the breaker face plate on. Attach the other end of the Support Clip to the trip unit mounting with the hardware provided.

**Step 8h (page 5):** Do not use Step 8h from IL33-856-2.

**Step 9e (page 6):** Exception: connect one wire to the normally closed terminal and the other wire to the common terminal.

## Free Manuals Download Website

<http://myh66.com>

<http://usermanuals.us>

<http://www.somanuals.com>

<http://www.4manuals.cc>

<http://www.manual-lib.com>

<http://www.404manual.com>

<http://www.luxmanual.com>

<http://aubethermostatmanual.com>

Golf course search by state

<http://golfingnear.com>

Email search by domain

<http://emailbydomain.com>

Auto manuals search

<http://auto.somanuals.com>

TV manuals search

<http://tv.somanuals.com>