

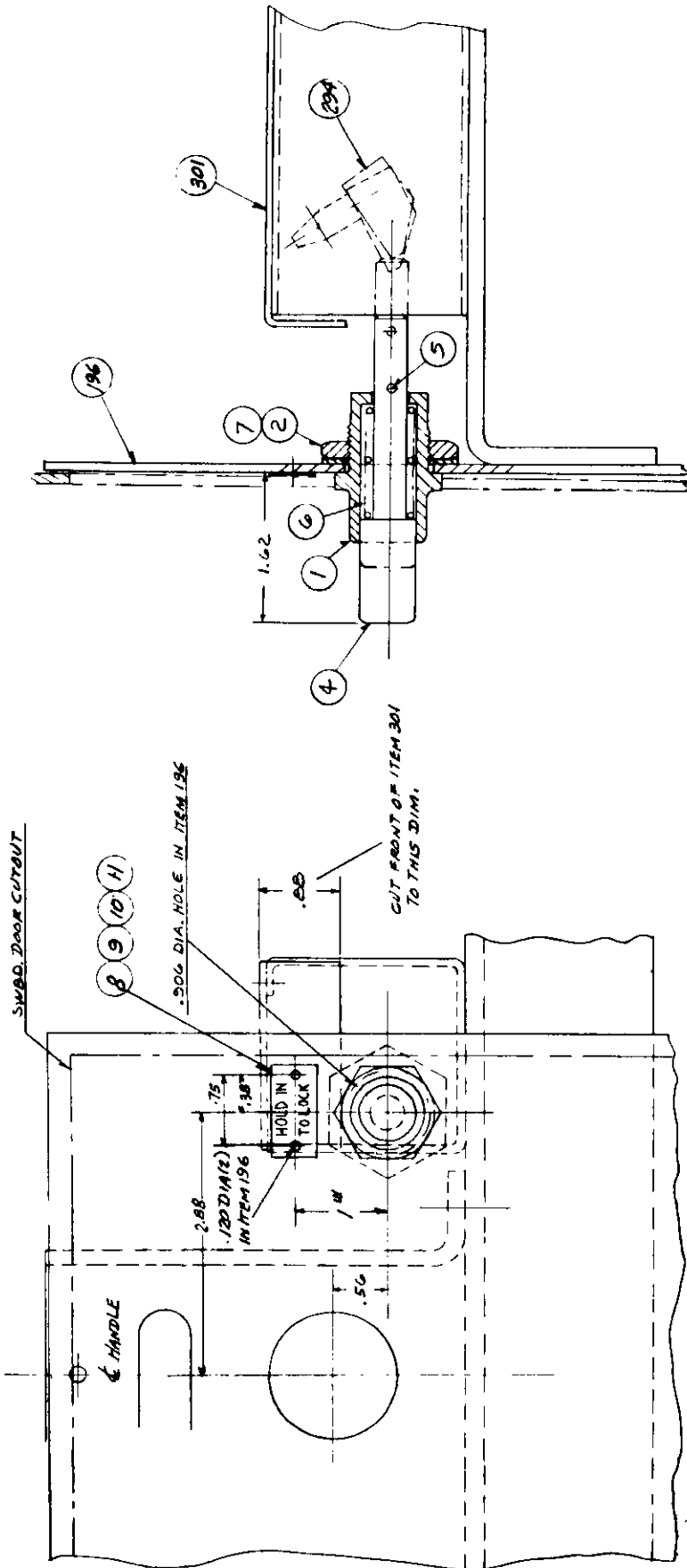
Technical Manual Insert
for
NAVSHIPS 362-1630
WESTINGHOUSE T.M. 32-855-1C1

HOLD-IN
FOR
NAVY TYPE ACB-640R
CIRCUIT BREAKER
WESTINGHOUSE TYPE DBN-406



TECHNICAL MANUAL 32-855-14C1

ACB-640R CIRCUIT BREAKER



LEGEND

- | | | | |
|----|------------|-----|-------------------------|
| 1 | Bushing | 8 | Nameplate |
| 2 | Nut | 9 | .112-2/0 Screws |
| 4 | Plunger | 10 | .112-2/0 Nuts |
| 5 | Cotter Pin | 11 | .112 Lockwashers |
| *6 | Spring | 196 | Faceplate |
| 7 | Lockwasher | 294 | Weight (Anti-shock-out) |
| | | 301 | Cover (Anti-shock-out) |
- *Repair Part

HOLD-IN

FUNCTION

The function of a hold-in device is to permit closing of a circuit breaker on overloads which exceed the overcurrent trip settings. The breaker will stay closed as long as the hold-in is depressed.

OPERATION

Depressing plunger (4) rotates weight (294) counterclockwise which blocks plate (291) figure 1-2-8 from rotating counterclockwise. This restrains trip bar (240) from rising sufficiently to trip the breaker.

When plunger (4) is released, the breaker may trip if the overcurrent trip has never been allowed to reset.

REPAIR PARTS

To replace spring (6), remove cotter pin (5) and plunger (4), replace spring and reassemble.

ADJUSTMENTS

There is no need for adjustments unless some part has been bent and distorted. In this case the distorted part must be straightened.

INSTALLATION

In some circumstances it will be necessary to add the hold-in to breakers now in service. Place breaker in the withdrawn position.

1. Drill .906 dia. hole and two .120 dia. holes in faceplate (196) as shown.
2. Cut off anti-shock-out cover (301) to .88 inch dimension as shown.
3. Check weights (294). They must face in opposite directions, and the weight in front of .906 dia. hole must be as shown. If necessary disassemble anti-shock-out device and reassemble correctly.
4. Assemble items (1) thru (11) as shown.

Check operation by closing breaker and depressing plunger (4). With a stick apply upward pressure on trip bar (240) and note that it is restrained sufficiently to prevent breaker tripping.

Warning - Keep hands free in case breaker should open.

Free Manuals Download Website

<http://myh66.com>

<http://usermanuals.us>

<http://www.somanuals.com>

<http://www.4manuals.cc>

<http://www.manual-lib.com>

<http://www.404manual.com>

<http://www.luxmanual.com>

<http://aubethermostatmanual.com>

Golf course search by state

<http://golfingnear.com>

Email search by domain

<http://emailbydomain.com>

Auto manuals search

<http://auto.somanuals.com>

TV manuals search

<http://tv.somanuals.com>