



WASHER USER INSTRUCTIONS

洗衣機用戶說明書

Table of Contents

| | |
|-----------------------------|---|
| ASSISTANCE OR SERVICE | 1 |
| WASHER SAFETY | 2 |
| WASHER USE | 3 |
| WASHER CARE..... | 4 |
| TROUBLESHOOTING..... | 5 |

目錄

| | |
|--------------|----|
| 幫助或者服務..... | 7 |
| 洗衣機安全 | 7 |
| 洗衣機使用說明..... | 8 |
| 洗衣機護理 | 10 |
| 故障排除 | 10 |

Assistance or Service

Before calling for assistance or service, please check “Troubleshooting.” It may save you the cost of a service call. If you still need help, contact the dealer from whom you purchased the washer, or a Whirlpool designated service company.

When calling, please know the purchase date and the complete model and serial number of your appliance. This information will help us to better respond to your request.

If you need replacement parts

If you need to order replacement parts, we recommend that you only use factory specified parts. These parts will fit right and work right because they are made with the same precision used to build every new WHIRLPOOL® appliance.

To locate factory specified parts in your area:

Contact the dealer from whom you purchased the washer, or a WHIRLPOOL® designated service company.

Keep this book and your sales slip together for future reference. You must provide proof of purchase or installation date for in-warranty service.

Write down the following information about your appliance to help you obtain assistance or service if you ever need it. You will need to know your complete model number and serial number. You can find this information on the model and serial number label, located under the washer lid.

Dealer name _____

Serial number _____

Address _____

Phone number _____

Model number _____

Purchase date _____

WASHER SAFETY

Your safety and the safety of others are very important.

We have provided many important safety messages in this manual and on your appliance. Always read and obey all safety messages.



This is the safety alert symbol.

This symbol alerts you to potential hazards that can kill or hurt you and others.

All safety messages will follow the safety alert symbol and either the word "DANGER" or "WARNING". These words mean:

DANGER

You can be killed or seriously injured if you don't immediately follow instructions.

WARNING

You can be killed or seriously injured if you don't follow instructions.

All safety messages will tell you what the potential hazard is, tell you how to reduce the chance of injury, and tell you what can happen if the instructions are not followed.

IMPORTANT SAFETY INSTRUCTIONS

WARNING: To reduce the risk of fire, electric shock, or injury to persons when using the washer, follow basic precautions, including the following:

- Read all instructions before using the washer.
- Do not wash articles that have been previously cleaned in, washed in, soaked in, or spotted with petrol, dry-cleaning solvents, other flammable, or explosive substances as they give off vapours that could ignite or explode.
- Do not add petrol, dry-cleaning solvents, or other flammable, or explosive substances to the wash water. These substances give off vapours that could ignite or explode.
- Under certain conditions, hydrogen gas may be produced in a hot water system that has not been used for 2 weeks or more. **HYDROGEN GAS IS EXPLOSIVE.** If the hot water system has not been used for such a period, before using the washing machine, turn on all hot water taps and let the water flow from each for several minutes. This will release any accumulated hydrogen gas. As the gas is flammable, do not smoke or use an open flame during this time.
- Do not allow children to play on or in the washer. Close supervision of children is necessary when the washer is used near children.
- The appliance is not intended for use by young children or infirm persons without supervision.
- Before the washer is removed from service or discarded, remove the door or lid.
- Do not reach into the washer if the drum, tub or agitator is moving.
- Do not install or store the washer where it will be exposed to the weather.
- Do not tamper with controls.
- Do not repair or replace any part of the washer or attempt any servicing unless specifically recommended in this Use and Care Guide or in published user-repair instructions that you understand and have the skills to carry out.
- See Installation Instructions for earthing requirements.
- If the supply cord is damaged, it must be replaced by the manufacturer or its service agent or a similarly qualified person in order to avoid a hazard.

SAVE THESE INSTRUCTIONS

WASHER USE

Loading

For these suggested full-sized loads, set the LOAD SIZE selector to the highest load size setting.

SUPER CAPACITY and SUPER CAPACITY PLUS WASHERS

Heavy Work Clothes

3 pair pants
3 shirts
4 pair jeans
1 coverall
1 overall

Mixed Load

3 double sheets
4 pillowcases
8 T-shirts
6 pair shorts
2 shirts
2 blouses
8 handkerchiefs

Towels

10 bath towels
10 hand towels
14 washcloths
1 bath mat

Delicates

3 camisoles
1 quilted robe
4 slips
4 panties
2 bras
2 nighties
1 baby's dress

EXTRA LARGE CAPACITY WASHERS

Heavy Work Clothes

2 pair pants
3 shirts
3 pair jeans
1 coverall

Mixed Load

2 double sheets or
1 king size sheet(s)
4 pillowcases
6 T-shirts
6 pair shorts
2 shirts
2 blouses
6 handkerchiefs

Towels

8 bath towels
8 hand towels
10 washcloths
1 bath mat

Delicates

3 camisoles
4 slips
4 panties
2 bras
2 nighties

Starting Your Washer

⚠ WARNING



Fire Hazard

Never place items in the washer that are dampened with gasoline or other flammable fluids.

No washer can completely remove oil.

Do not dry anything that has ever had any type of oil on it (including cooking oils).

Doing so can result in death, explosion, or fire.

⚠ WARNING



Electrical Shock Hazard

Electrically earth this appliance.

Do not use an extension cord or an electrical portable outlet device.

Failure to follow these instructions can result in death, fire, or electrical shock.

1. Measure detergent and pour it into the washer. If desired, add powdered or liquid color safe bleach. Drop a sorted load of clothes loosely into your washer.

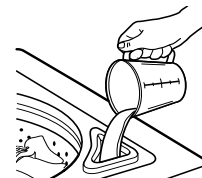
- Load evenly to maintain washer balance. Mix large and small items. Items should move easily through the wash water. Overloading can cause poor cleaning.

2. (OPTIONAL) Add liquid chlorine bleach.

NOTE: Follow the manufacturer's directions for proper use. Undiluted bleach will damage any fabric it touches. The damage appears as rips, holes, tears, or color loss and may not show up until several washings later. To avoid spilling, use a cup with a pouring spout. Do not let bleach splash, drip, or run down into the washer basket. Always measure liquid chlorine bleach. Do not guess. Do not use more than the manufacturer's recommended amount for a full load. Use less with a smaller load size.

- Style 1:** With liquid chlorine bleach dispenser (on some models)

- Use only liquid chlorine bleach in this dispenser. Pour measured liquid chlorine bleach into the liquid chlorine bleach dispenser. Bleach is immediately fed into washer and is diluted automatically during the wash part of the cycle.



Style 2: Without liquid chlorine bleach dispenser (on some models)

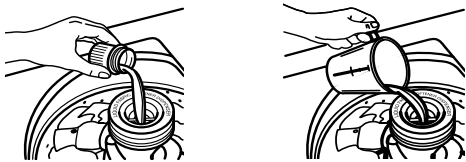
- Let the washer fill and begin agitating the load.
- Add bleach 5 minutes into the wash cycle for best cleaning and so that bleach can be removed in the rinse cycle. Pour bleach around the agitator, not directly onto the load to avoid damaging clothing or other items in the load.

3. (OPTIONAL) Add liquid fabric softener.

NOTE: Do not spill or drip any fabric softener onto the clothes. Undiluted fabric softener can stain fabrics. Always dilute fabric softener with warm water. Too much fabric softener can make some items (diapers and towels) nonabsorbent. If this happens, do not use it every load, or use less of it in each load.

Style 1: With liquid fabric softener dispenser (on some models)

- Use only liquid fabric softener in this dispenser. Pour measured liquid fabric softener into the dispenser. Softener is added automatically during the rinse portion of the cycle. Dilute liquid fabric softener by filling the dispenser with warm water until liquid reaches the crossbar in the dispenser opening.



Style 2: Without liquid fabric softener dispenser (on some models)

- In the final rinse ONLY, add fabric softener that has been diluted with 250 mL warm water.

4. Close the washer lid. Washer will not agitate or spin with the lid open.

5. Turn the LOAD SIZE or WATER LEVEL selector to the correct setting for your wash load and the type of fabric being washed. You may change the load size or water level selection after the washer has started filling by turning the selector to a different setting.
6. Set the TEMPERATURE selector to the correct setting for the type of fabric and soils being washed. Use the warmest wash water safe for fabric. Follow garment label instructions.

NOTE: In wash water temperatures colder than 21°C, detergents do not dissolve well. Soils can be difficult to remove. Some fabrics can retain wear wrinkles and have increased pilling (the formation of small lint-like balls on the surface of garments).

7. (OPTIONAL) EXTRA RINSE selector (on some models). For an additional rinse and spin at the end of a wash cycle, set the EXTRA RINSE selector to ON. On some models, the EXTRA RINSE feature is part of the cycle.
8. (OPTIONAL) Some models have an END OF CYCLE SIGNAL selector. Set this selector to ON if you want your washer to alert you when the wash cycle is complete.
9. Push in the Cycle Control knob and turn it clockwise to the wash cycle you want. Reduce the wash time when using a small load size setting. Pull out the Cycle Control knob to start the washer.



To stop or restart your washer:

- To stop the washer at any time, push in the Cycle Control knob.
- To restart the washer, close the lid (if open) and pull out the Cycle Control knob.

WASHER CARE

Cleaning Your Washer

Use a soft, damp cloth or sponge to wipe up any spills such as detergent or bleach from the outside of your washer.

Clean your washer interior by mixing 250 mL of chlorine bleach and 500 mL of detergent. Pour this mixture into your washer and run it through a complete cycle using hot water. Repeat this process if necessary.

Remove any hard water deposits using only cleaners labeled as washer safe.

Cleaning the liquid fabric softener dispenser (on some models):

1. Remove dispenser by grasping top with both hands and squeezing, while pushing upward with thumbs.
2. Rinse dispenser under warm water, then replace it.

NOTE: Some models are equipped with a liquid fabric softener dispenser. To avoid damage to the washer or clothing do not wash clothes with the liquid fabric softener dispenser removed or add detergent or bleach to this dispenser; it is for liquid fabric softener only.

Water Inlet Hoses

Replace inlet hoses after 5 years of use to reduce the risk of hose failure. Periodically inspect and replace inlet hoses if bulges, kinks, cuts, wear or leaks are found.

When replacing your inlet hoses, mark the date of replacement on the label with a permanent marker.

Moving & Storage

Because some water may stay in the hoses, freezing can damage your washer. If storing or moving your washer during freezing weather, winterize it.

Winterizing your washer

1. Shut off both water faucets. Disconnect and drain water inlet hoses. Pour 1 L of R.V.-type antifreeze into the basket.
2. Run washer on a drain and spin setting for about 30 seconds to mix the antifreeze and remaining water.
3. Unplug washer or disconnect power.

To use washer again

1. Flush water pipes and hoses. Reconnect water inlet hoses. Turn on both water faucets.
2. Plug in washer or reconnect power.
3. Run the washer through a complete cycle with 250 mL of detergent to clean out antifreeze.

Storage, non-use or vacation care

Operate your washer only when you are at home. If you will be on vacation or not using your washer for an extended period of time, you should:

1. Unplug washer or disconnect power.
2. Turn off the water supply to the washer. This helps avoid accidental flooding (due to a water pressure surge) while you are away.

TROUBLESHOOTING

First try the solutions suggested here and possibly avoid the cost of a service call...

Washer and Components

Noisy

- **Is the load balanced and the washer level?** The wash load should be balanced and not overloaded. The washer must be level. The front feet should be properly installed and the nuts tightened. Reset the rear leveling legs (if needed). See the Installation Instructions.
 - **Did you completely remove the yellow shipping strap with cotter pins?** See the Installation Instructions.
 - **Are the gears engaging after the drain and before spin, or is the upper part of agitator clicking during wash?** These are normal washer noises.
-

Leaking

- **Check the following:**
 - Are the fill hoses tight?
 - Are the fill hose washers properly seated?
 - Is the drain hose clamp properly installed? See the Installation Instructions.
 - **Is the sink or drain clogged?** Sink and standpipe must be able to handle 64 L of water per minute.
 - **Is water deflecting off the tub ring or the load?** Center the tub before starting the washer. The wash load should be balanced and not overloaded. The fill or spray rinses can deflect off the load. The washer must be level. The front feet should be properly installed and the nuts tightened. Reset the rear leveling legs (if needed). See the Installation Instructions.
 - **Check household plumbing for leaks.**
-

Basket crooked

- **Was the washer basket pulled forward during loading?** Push the basket to the center before starting wash.
 - **Is the load balanced and the washer level?** The wash load should be balanced and not overloaded. The washer must be level. The front feet should be properly installed and the nuts tightened. Reset the rear leveling legs (if needed). See the Installation Instructions.
 - **The washer basket moves while washing.** This is normal.
-

Agitator operation

- **The top of the agitator is loose, or moves in only one direction.** This is normal.
-

Dispensers clogged or bleach leaking

- **Did you follow the manufacturer's directions when adding detergent and fabric softener to the dispensers (on some models)?** Measure detergent and fabric softener. Carefully pour into the dispensers. Wipe up all spills. Dilute fabric softener in the fabric softener dispenser.
 - **Did you put powdered or color-safe bleach in the liquid chlorine bleach dispenser (on some models)?** Add powdered or liquid color-safe bleach directly to the basket. Do not use the chlorine bleach dispenser for color-safe bleach.
-

Washer Operation

Washer stops, won't fill, rinse or agitate

- **Check the following:**
 - Is the power cord plugged in?
 - Is the indicator on the Cycle Control knob properly lined up with a cycle? Turn the Cycle Control knob to the right slightly and pull to start.
 - Are the water inlet valve screens clogged?
 - Are both the hot and cold water faucets turned on?
 - Is the water inlet hose kinked?
 - **Does the water level seem too low, or does the washer appear to not fill completely?** The top of the agitator is much higher than the highest water level. This is normal and necessary for clothes to move freely.
 - **Has a fuse blown or is the circuit breaker open?** If problem continues, call an electrician.
 - **Are you using an extension cord?** Do not use an extension cord or an electrical portable outlet device.
 - **Is the washer in a normal pause in the cycle?** The washer pauses for about 2 minutes during certain cycles. Allow the cycle to continue. Some cycles feature periods of agitation and soak.
 - **Is the washer overloaded?** Wash smaller loads.
 - **Is the lid open?** The lid must be closed during operation. Washer will not agitate or spin with the lid open.
-

Washer won't drain or spin

- **Is the drain hose clogged, or the end of the drain hose more than 244 cm above the floor?** See the Installation Instructions for proper installation of drain hose.
 - **Is the lid open?** The lid must be closed during operation. Washer will not agitate or spin with the lid open.
 - **Is there excessive sudsing?** Always measure detergent. Follow manufacturer's directions. If you have very soft water, you might need to use less detergent.
-

Washer continues to fill or drain, cycle seems stuck

- **Is the top of drain hose lower than the water level in washer?** The top of the hose must be higher than the water level in the washer for proper operation. See the Installation Instructions.
 - **Does the drain hose fit too tightly in the standpipe, or is it taped to the standpipe?** The drain hose should be loose yet fit securely. Do not seal the drain hose with tape. The hose needs an air gap. See the Installation Instructions.
-

Wash/Rinse temperature not what I selected

- **Are the hot and cold water inlet hoses reversed?** See the Installation Instructions for more information. As your frequency of loads washed increases, the water temperature may decrease for hot and warm temperatures. This is normal.
- **Did you select a Warm/Warm temperature setting?** On models without ACCUWASH automatic temperature control that do have a Warm/Warm temperature selection, the warm wash will be followed by an energy saving cold rinse followed by warm spray rinses. This saves energy while providing an effective rinse performance.

Washer Results

Load too wet

- **Did you use the right cycle for the load being washed?** Select a cycle with a higher spin speed (if available).
- **Did you use a cold rinse?** Cold rinses leave loads wetter than warm rinses. This is normal.

Residue or lint on load

- **Did you sort properly?** Sort lint givers (towels, chenille) from lint takers (corduroy, synthetics). Also sort by color.
- **Did you overload the washer?** The wash load must be balanced and not overloaded. Clothes should move freely. Lint can be trapped in the load if overloaded. Wash smaller loads.
- **Did you select the correct water level?** The water level should be correct for the load size. Clothes should move freely in the water.
- **Did you use enough detergent?** Follow manufacturer's directions. Use enough detergent to hold the lint in the water.
- **Did you line dry your clothing?** If so, you can expect some lint on the clothing.
- **Check the following:**
 - Was paper or tissue left in the pockets?
 - Is your water colder than 21°C? Wash water colder than 21°C may not completely dissolve the detergent.
 - Did you use the proper cycle time for the load? Reducing wash time (duration) is another way to reduce lint.

Stains on load

- **Did you follow the manufacturer's directions when adding detergent and fabric softener?** Measure detergent and fabric softener. Use enough detergent to remove soil and hold it in suspension. Dilute fabric softener and add to the rinse portion of a cycle only. Do not drip fabric softener on clothes.
- **Is there above average iron (rust) in water?** You may need to install an iron filter.
- **Did you properly sort the load?** Sort dark clothes from whites and lights.
- **Did you unload the washer promptly?** To avoid dye transfer, unload the washer as soon as it stops.

Load is wrinkled

- **Did you unload the washer promptly?** Unload the washer as soon as it stops.
- **Did you use the right cycle for the load being washed?** Use the cycle for Casual or Permanent Press clothes or another cycle with low spin speeds (if available) to reduce wrinkling.
- **Did you overload the washer?** The wash load must be balanced and not overloaded. Loads should move freely during washing.

To reduce wrinkling of permanent press clothes and some synthetic knits, use a large load size to provide more space.
- **Was the wash water warm enough to relax wrinkles, or are you using warm rinses?** If safe for the load, use warm or hot wash water. Use cold rinse water.
- **Are the hot and cold water hoses reversed?** Check to be sure the hot and cold water hoses are connected to the right faucets. See the Installation Instructions.

Load is tangled or twisted

- **Did you overload the washer?** The wash load must be balanced and not overloaded. Loads should move freely during washing.
- **Did you wrap items around the agitator?** Drop items loosely into the washer. Do not wrap items around the agitator.

Gray whites, dingy colors

- **Did you properly sort the load?** Dye transfer can occur when mixing whites and colors in a load. Sort dark clothes from whites and lights.
- **Was the wash temperature too low?** Use hot or warm washes if safe for the load. Make sure your hot water system is adequate to provide a hot water wash.
- **Did you use enough detergent, or do you have hard water?** Use more detergent for washing heavy soils in cold or hard water.
- **Are the hot and cold water hoses reversed?** Check to be sure the hot and cold water hoses are connected to the right faucets. See the Installation Instructions.

Garments damaged

- **Check the following:**
 - Were sharp items removed from pockets before washing? Empty pockets, zip zippers, snap or hook fasteners before washing.
 - Were strings and sashes tied to prevent tangling?
 - Were items damaged before washing? Mend rips and broken threads in seams before washing.
- **Did you overload the washer?** The wash load must be balanced and not overloaded. Loads should move freely during washing.
- **Did you add chlorine bleach properly?** Do not pour chlorine bleach directly onto load. Wipe up bleach spills. Undiluted bleach will damage fabrics. Do not place load items on top of the bleach dispenser when loading and unloading the washer (on some models).
- **Did you follow the manufacturer's care label instructions?**

洗衣機用戶說明書

幫助或服務

在致電要求幫助或者服務之前，請檢查“故障排除”章節，這樣可以為您節省呼叫服務的成本。如果您還需要幫助，請聯繫您所購買該洗衣機的經銷商，或者惠而浦公司的指定服務商。

在致電時，請告知您的購買日期，完整的型號和系列碼。這些資料可以幫助我們更快地做出反應。

如果您需要更零件

如果您需要訂購更換零件，我們建議您僅用工廠指定的零件。這些零件可以正常適配並運作正常，因為它們跟其他全新惠而浦電器的零件一樣 都是精密製造。

想找工廠指定的部件在當地位置：

請聯繫您所購買該洗衣機的經銷商，或者惠而浦指定的服務商。

請保存該使用說明書和銷售卡片，以便將來參考。如果要質量保證服務，您必須提供購買或者安裝日期的證據。

請填寫以下您電器的有關資料，以便需要時獲得幫助或者服務。您必需知道您的完整型號和系列碼。該資料您可以從型號和系列碼標籤上獲得，在洗衣機上蓋下方。

經銷商名稱 _____

系列碼 _____

地址 _____

電話號碼 _____

型號 _____

購買日期 _____

洗衣機安全

您和其他人的安全非常重要。

我們在該手冊裏和該機器上提供了許多重要的安全信息。請務必閱讀和遵守這些安全信息。



這是安全戒備符號。

該符號是提高你對潛在危險的警覺，這些危險可能會對你和別人造成傷亡。

所有安全信息都會在該安全戒備符號，“危險”或“警告”詞語之後。

這些詞語的意思是：

 **危險**

如果您沒有立即遵照說明，可能導致您嚴重受傷或死亡。

 **警告**

如果您沒有遵照說明，可能導致您嚴重受傷或死亡。

所有安全資料都會告知您潛在危險是什麼，告訴您如何減少受傷機率，並且告訴您如果您沒有遵照說明會發生什麼事。

重要的安全說明

警告：要降低起火、電擊，或者使用洗衣機時對人造成傷害，請遵照以下基本防範措施，包括以下幾點：

- 使用洗衣機前，請閱讀所有安全說明。
- 不要洗滌曾經被汽油、乾洗溶劑、易燃或容易爆炸物質所清洗過、洗滌過、浸泡過的衣物，因為他們可能會釋放出燃燒或者爆炸的氣體。
- 不要加入汽油、乾洗溶劑，或者其他易燃或者易爆炸的物質到洗衣水裏面。他們會釋放出可能燃燒或者爆炸的氣體。
- 在某些情況下，一個2個星期或更長沒有使用的熱水系統可能會產生氫氣。氫氣是易爆氣體。如果熱水系統有該段期間沒有使用，在使用洗衣機之前，打開所有的熱水水龍頭，讓水在每個水龍頭都流出幾分鐘。這樣可以釋放掉任何聚集的氫氣。由於該氣體是易燃性的，在此時請不要吸煙或者使用明火苗。
- 不要讓小孩在洗衣機上或在其內裏玩耍。當洗衣機在小孩附近使用時，請仔細照看好小孩。
- 該機器不適合年少的小孩或者體弱無人照看的人使用。
- 在停止使用或棄置洗衣機時，請卸下它的門或者上蓋。
- 當內槽、缸或者迴轉盤在動時，請不要伸手進洗衣機內。
- 請不要將洗衣機安裝或者存放暴露在天氣下的地方。
- 不要損壞控制板。
- 請不要擅自修理或者更換任何洗衣機零件，除非您具有修理技能及明確理解這使用和護理指南或其他用戶維修說明書所指定的修理方法，否則請別擅自修理。
- 查看安裝說明中的接地要求。
- 如果該電源線毀壞了，必須由製造商，其服務代表，或者具有相同資格人員來更換，這樣可以避免危險。

保存好這些說明

洗衣機使用說明

裝入容量

對於這些建議的衣物容量，設置 LOAD SIZE（容量）選擇器以到最高的洗衣容量。

大容量和加大容量洗衣機

| 工作服等重衣物 | 混合裝 | 毛巾 | 細緻衣物 |
|----------|---------|--------|---------|
| 3 條褲子 | 3 張雙人床單 | 10 條浴巾 | 3 件女背心 |
| 3 件襯衫 | 4 個枕套 | 10 條手巾 | 1 件棉袍 |
| 4 條牛仔褲 | 8 件 T 恤 | 14 條面巾 | 4 件女式內衣 |
| 1 件連褲工作服 | 6 條短褲 | 1 條防滑墊 | 4 條內褲 |
| 1 件罩衫 | 2 件襯衫 | | 2 件乳罩 |
| | 2 件上衣 | | 2 件睡衣 |
| | 8 條手帕 | | 1 件嬰兒服 |

特大容量洗衣機

| 工作服等重衣物 | 混合裝 | 毛巾 | 細緻衣物 |
|----------|----------|--------|---------|
| 2 條褲子 | 2 張雙人床單或 | 8 條浴巾 | 3 件女背心 |
| 3 件襯衫 | 1 張特大床單 | 8 條手巾 | 4 件女式內衣 |
| 3 條牛仔褲 | 4 個枕套 | 10 條面巾 | 4 條內褲 |
| 1 條連褲工作服 | 6 件 T 恤 | 1 條防滑墊 | 2 件乳罩 |
| | 6 條短褲 | | 2 件睡衣 |
| | 2 件襯衫 | | |
| | 2 件上衣 | | |
| | 6 條手帕 | | |

啟動您的洗衣機

警告



起火的危險

- 永遠不要放入沾有汽油或者其他易燃液體的衣物。
- 沒有洗衣機可以完全去除油漬。
- 不要烘乾任何帶有油漬的衣物（包括烹調油）。
- 這樣做，可能會造成死亡、爆炸，或者起火。

警告



電擊危險

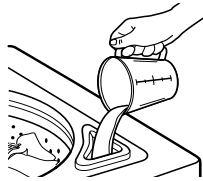
- 請將本電器接地線。
- 請勿使用延長線，或可攜式電子插座裝置。
- 若未遵守這些指引可能導致人員傷亡、火災或電擊。

- 量好洗劑，將其倒入洗衣機。如有需要，可以加入粉狀或者液態的不褪色漂白劑。將分類好的衣物鬆散地放入洗衣機中。
 - 平均安放這些衣物，讓洗衣機保持平衡。將大件和小件衣服混在一起。衣物在洗滌水裏面要能自如移動。超負荷會引起洗衣效果不佳。
- （可選）加入液體氯漂白劑

注意：遵照製造商的指導以作正確使用。未稀釋的漂白劑會損壞其接觸的纖維。損壞形式有裂縫、小孔、撕壞，或者掉色，而且不會馬上表現出來，直到洗了幾次之後。為了避免溢出，請使用一個帶有倒出口杯子。不要讓漂白劑濺出、滴落或者流進洗衣籃內。一定要量好液態氯漂白劑。不要用猜測。不要使用多於製造商推薦適合滿載的使用量。少量衣物容量 可以使用少量漂白劑。

類型 1：帶有液態氯漂白劑分配器（一些型號上）

- 在該分配器上只能使用液態氯漂白劑。將量好的液態氯漂白劑倒入分配器內。漂白劑馬上就喂入洗衣機內，並在洗滌行程時，自動稀釋。



類型 2：沒有液體氯漂白劑分配器（在某些型號上）

- 讓洗衣機注水並開始攪拌衣物。
 - 在洗滌行程開始 5 分鐘後 加入漂白劑，以達到最好的洗淨效果，並且在清洗行程中可以去除漂白劑。將漂白劑倒入迴轉盤周圍，而不要直接倒在衣物上面 以避免損壞所洗的衣物。
- （可選）加入液態衣服柔軟精

注意：不要溢出或者滴落任何柔軟精在衣服上。沒有稀釋的柔軟精會沾染衣物。務必用溫水稀釋柔軟精。太多的柔軟精會造成一些衣物（尿布和毛巾）變成沒有吸收性。如果這種情況發生，不要每次洗衣服都使用它，或者每次少用一點。

類型 1：帶有液態衣服柔軟精分配器（一些型號上）

- 在該分配器上只能使用液態柔軟精。將量好的液態柔軟精倒入分配器內。柔軟精在清洗行程中的清洗過程時，會自動加入。通過往分配器加入溫水稀釋液態柔軟精，直到滿到分配器開口處。



類型 2：沒有液態衣服柔軟精分配器（一些型號上）

- 僅在最後的清洗行程時，加入被 250 mL 的溫水稀釋過的衣服柔軟精。

- 關上上蓋。蓋子打開時，洗衣機不會攪拌或者脫水。
- 將容量或者水位選擇器設置到洗滌容量以及所洗衣物種類。在洗衣機開始注水後，您可以更改設置來調整容量或者水位選擇。
- 設置溫度選擇器到適合所洗的衣物類型和污垢程度。使用對衣物安全的最高溫度。請遵照衣服標籤說明。

注意：在水溫低於 21°C，洗劑無法充分溶解。污垢很難去除。一些衣服可能保留穿著皺折並會增加表面起球（衣服表面起的球狀形體）。

- （可選）附加清洗選擇器（在某些型號上）。在洗衣行程之後要附加清洗和脫水，將附加清洗選擇器設置為“開”。在一些型號上 附加清洗是洗衣行程的一部分。
- （可選）一些型號上有一個行程終止信號選擇器。如果您希望洗衣機提醒您洗衣行程已經結束，請將該選擇器設置為“開”。
- 按下行程控制旋鈕，並順時針旋轉到您想要的洗衣行程。對少量設置時，可以減少洗滌時間。拉出行程控制旋鈕就開始洗衣。



要停止或者重新啟動您的洗衣機：

- 任何時候要停止您的洗衣機，按下行程控制旋鈕。
- 要重新啟動洗衣機，蓋上上蓋（如果是開的）並拉出行程控制旋鈕。

洗衣機護理

清潔您的洗衣機

使用一塊軟濕布或者海綿擦拭掉留在洗衣機外殼上的洗劑或漂白劑。

使用 250 mL 的氯漂白劑和 500 mL 洗劑清潔洗衣機內部。將該混合液倒入洗衣機並使用熱水運行一次完整的行程。如有需要，可以重復該過程。

用洗衣機安全說明標籤上指示的清潔器除去硬水沉澱物。

清潔液態柔軟精分配器（在某些型號上）：

1. 雙手抓住分配器頂部並用大拇指向上推的同時擠壓，取下分配器。
2. 用溫水沖洗分配器，然後重新安裝上。

注意：有些型號配備有液體衣服柔軟精分配器。為了避免損壞洗衣機或衣物，請別在卸下分配器後，洗滌衣服。也別將洗劑或者漂白劑倒進該分配器內。這分配器只可供液體柔軟精使用。

進水軟管

在使用進水軟管 5 年之後，請更換它，以免軟管失效。定期檢查軟管，如果發現其有膨脹、扭結、破損或者漏水，請更換它。

在更換您的進水軟管時，請在標籤上用不退色顏色筆注明更換日期。

搬動和存放

因為軟管內可能存留一些水，結冰時會損壞您的洗衣機。如果在冰冷的天氣時存放或者搬動您的洗衣機，為洗衣機作冬季準備。

為洗衣機作冬季準備

1. 關上兩個水龍頭。拔出進水軟管，並排放管裏的水。往洗衣籃內倒入 1 L（公升）的防凍劑。
2. 讓洗衣機運行排水和脫水設置大概 30 秒鐘，將剩餘的水和防凍劑混合起來。
3. 拔出插頭或者截斷洗衣機的電源。

再次使用洗衣機時

1. 沖洗水管和軟管。重新接上進水軟管。打開兩個水龍頭。
2. 插上電源或者連接電源。
3. 加入 250 mL 的洗劑，完整運行一次洗衣行程，以洗淨防凍劑。

存放，不使用或者假期護理

只有當您在家時才操作洗衣機。如果您將要度假或較長時間不使用洗衣機，您必須：

1. 拔出插頭或者截斷電源。
2. 關掉水龍頭。這樣可以避免在您不在家時，水突然溢流（因為水壓突然膨脹）。

故障排除

首先請試試在此所建議的解決方式，或許可以省下呼叫服務的費用 ...

洗衣機和元件

噪音

- 衣服放置均勻或者洗衣機放置平穩了嗎？衣物要放置平穩並且不要超量。洗衣機必須是水平放置的。前腳必須安裝恰當並旋緊螺帽。重置後面的平衡腳（如果需要的話）。請參閱安裝說明。
- 您已經完全取下黃色運送帶了嗎？請參閱安裝說明。
- 在排水之後脫水之前，齒輪是否咬合或者迴轉盤在洗衣過程中會滴答地響？這些是正常的洗衣機聲音。

漏水

- 檢查以下方面：
 - 進水軟管裝緊了嗎？
 - 軟管墊圈已經鎖定了嗎？
 - 排水軟管的夾子夾好了嗎？請參閱安裝說明。
- 洗滌槽或排水管堵住了嗎？洗滌槽或豎管必須能夠每分鐘處理 64 L 的水。
- 水偏出洗衣槽口或者放置的衣物了嗎？在啟動洗衣機之前請讓洗衣槽處於正中央。要洗的衣物要均勻放置和避免超量。注水或者噴灑洗清的水可能從衣物偏出。洗衣機必須水平放置。前腳必須安裝恰當並且旋緊螺帽。重置後面的平衡腳（如果需要的話）。請參閱安裝說明。
- 檢查家庭水管是否漏水。

洗衣籃有問題

- 放置衣物時洗衣籃前傾了嗎？開始洗衣前將洗衣籃推至正中央。
- 衣物放置均勻並且洗衣機放置平穩嗎？衣物要放置均勻並且不要超量。洗衣機必須是水平放置的。前腳必須安裝恰當並旋緊螺帽。重置後面的平衡腳（如果需要的話）。請參閱安裝說明。
- 洗衣籃在洗衣時移動。這是正常的。

迴轉盤操作

- 迴轉盤上端是鬆動的，或者只一個方向轉動。這是正常的。

分配器堵塞或者漂白劑滴漏

- 在加入洗劑或者柔軟精到分配器時（在某些型號上），您有按照製造商的指示嗎？量好洗劑和柔軟精。小心倒入分配器內。擦拭掉所有溢出的液體。在柔軟精分配器內稀釋柔軟精。
- 您有在液態氯漂白劑分配器內（在某些型號）放入粉狀或者不褪色漂白劑嗎？將粉狀或者液態不褪色漂白劑直接加入到洗衣籃內。不褪色漂白劑是不需使用氯漂白劑分配器。

洗衣機操作

洗衣機停止，不能注水、清洗或者攪拌

- **檢查以下方面：**
 - 電源插上了嗎？
行程控制旋鈕上的顯示器正確地排成一圈嗎？將行程控制旋鈕輕輕地轉向右邊，拉出啟動。
進水活門截面堵住了嗎？
冷水和熱水水龍頭都打開了嗎？
進水軟管扭結了嗎？
- **水位看起來太低，或者洗衣機無法完全注水？**迴轉盤上端比最高水位高出許多。這樣是正常的，可以讓衣服自由移動。
- **保險絲斷了或者電流斷了？**如果持續出現問題，請聯繫一個電工幫忙。
- **您有使用延長線嗎？**請勿使用延長線，或電子可攜式插座裝置。
- **洗衣機在行程中有正常停頓嗎？**洗衣機在某一個行程中會暫停 2 分鐘。讓程序繼續。有些行程包括洗衣旋轉和浸泡的功能。
- **洗衣機超量了嗎？**減少裝載衣物。
- **上蓋開著嗎？**洗衣機運行時，上蓋必須蓋上。上蓋打開時，洗衣機不會攪拌或者脫水。

洗衣機不能排水或者脫水。

- **排水軟管是否堵住了，或者排水軟管的末端是否高出地面多於 244 cm？**請查閱安裝說明，正確安裝排水軟管。
- **上蓋開著嗎？**洗衣機運行時，上蓋必須蓋上。上蓋打開時，洗衣機不會攪拌或者脫水。
- **泡沫過多？**務必要量好洗劑。請遵照製造商指示。如果您用很柔的水，請少用一點洗劑。

洗衣機持續注水或者排水，行程似乎停住了。

- **排水管的最高點低於洗衣機的水位嗎？**排水管的最高點必須比水位高，洗衣機才能正常運行。請參閱安裝說明。
- **排水管跟豎管連接太緊了，或者緊貼到豎管了？**排水管必須放鬆然而要安全接好。不要用膠帶將排水管密封。軟管需要一個空氣間隙。請參閱安裝說明。

洗滌 / 清洗溫度不是我所選擇的

- **熱水和冷水進水軟管接互調了嗎？**請參閱安裝說明以獲得更多資料。隨著您的衣物洗滌頻率增加，水溫可能會下降。這是正常的。
- **您選擇了一個溫洗 / 溫水溫度設置了嗎？**在沒有置備 ACCUWASH 自動溫控的型號，有一個溫洗 / 溫水溫度選擇，溫洗之後是省電的冷清洗，再之後是溫水噴灑清洗。這樣既省電又能有效清洗。

洗衣效果

衣物太濕

- **您選擇正確的洗衣行程了嗎？**
選擇一個較高脫水速度的行程（如果可以）。
- **您使用冷洗清嗎？**冷清洗的衣物比溫清洗較濕。這是正常的。

衣物上有殘渣或者麻屑

- **您分類恰當嗎？**將多毛類衣物（毛巾，絨線織物）從吸毛類衣物（燈芯絨，人造纖維）中分離。同樣要顏色分類。
- **洗衣機衣服超量了嗎？**洗衣機內的衣物必須均勻放置並且不要超量。衣服要能夠自由移動。如果超量，麻屑會被裹在衣物內。洗少一點。
- **您選擇了正確的水位了嗎？**水位必須適合要洗的衣量。衣服在水裏要能夠自由移動。
- **您使用足夠的洗劑了嗎？**遵照製造商的指示。使用足夠的洗劑以洗掉水中的麻屑。
- **您用掛線來晾衣服嗎？**如果這樣，衣料上的麻屑會多一些。
- **檢查以下幾方面：**
 - 口袋裏有紙張或者紙巾嗎？
水溫低於 21°C 嗎？水溫如果低於 21°C，洗劑無法充分溶解。
您設置了恰當的行程時間了嗎？減少洗滌時間（持續）是減少麻屑的另一種方法。

衣物上有污漬

- **您有遵照製造商的指示加入洗劑和柔軟精嗎？**量好洗劑和柔軟精。使用足夠的洗劑來去除污垢和漂浮物。將柔軟精稀釋後在清洗過程中加入。不要將柔軟精滴到衣服上。
- **在水裡有較正常情形過高的鐵銹嗎？**您或許需要安裝一個鐵銹濾網。
- **您正確分類衣物了嗎？**將白色和淡色衣服跟深色衣服分開。
- **您是否即時取出洗好的衣物？**為了避免顏色沾染，洗衣機一停止就將衣物取出。

衣物有皺折

- **您是否即時取出洗好的衣物？**洗衣機一停止就將衣物取出。
- **您使用正確的洗衣行程了嗎？**使用針對免燙衣服的行程，或者另外一種低速脫水（如果適用）以減少皺折。
- **您放入超量衣物了嗎？**洗衣機內的衣物必須均勻放置並且不要超量。衣服要能夠自由移動。
要減少免燙衣服和一些人造織物的褶皺，使用大容量設置以提供更多空間。
- **洗衣服的水溫足夠緩和這些褶皺嗎？還是您有使用溫水清洗嗎？**如果對衣物安全，儘量使用溫水或者熱水洗滌，而使用冷水清洗。
- **熱水和冷水軟管互調嗎？**檢查以確定熱水和冷水軟管正確連接到各自的水龍頭。請參閱安裝說明。

衣物糾纏或者絞在一起

- **您放入超量衣物了嗎？**洗衣機內的衣物必須均勻放置並且不要超量。洗衣時，衣服要能夠自由移動。
- **您有將衣物覆蓋在迴轉盤周圍嗎？**將衣物鬆弛地放進洗衣機。不要將衣物覆蓋在迴轉盤周圍。

灰白，暗黑的顏色

- **您有恰當將衣物分類嗎？**白色衣服和有顏色的衣服混合在一起時會發生沾染。將白色和淡色跟深色衣服分類。
- **洗衣溫度太低嗎？**如果對衣物安全的話 使用熱水或者溫水洗滌。確定您的熱水系統能夠供應足夠的熱水。
- **您使用足夠的洗劑，或者您用硬水洗嗎？**如用冷水或硬水清洗時需使用較多的洗劑來洗極髒的衣服。
- **熱水和冷水軟管互調了嗎？**檢查以確定熱水和冷水軟管正確連接到各自的水龍頭。請參閱安裝說明

衣服損壞

- **檢查以下方面：**

洗衣之前 是否已經在口袋裏取出鋒利的東西？洗衣之前，清理口袋、拉上拉鏈、扣上鈕釦等。

有捆綁繩子或帶子以防止糾纏在一起嗎？

衣物在洗衣之前就已經損壞了嗎？在洗衣之前，修補好裂縫和斷線。

- **您放入超量衣物了嗎？**洗衣機內的衣物必須均勻放置並且不要超量。洗衣時，衣服要能夠自由移動。
- **您適當的加入氯漂白劑嗎？**不要將氯漂白劑直接倒在衣物上。擦掉溢出的漂白劑。沒有稀釋的漂白劑會損壞纖維。裝入和取出衣物時，不要將衣物放在漂白劑分配器上方（在某些型號上）。
- **您有遵照製造商的護理標籤說明嗎？**

8539791

© 2004 Whirlpool Corporation.
All rights reserved.

© 2004 惠而浦公司
保留所有權利

® Registered Trademark/TM Trademark of Whirlpool, U.S.A.

® 註冊商標 /TM 美國惠而浦商標

3/04

Printed in U.S.A.

列印於美國

Free Manuals Download Website

<http://myh66.com>

<http://usermanuals.us>

<http://www.somanuals.com>

<http://www.4manuals.cc>

<http://www.manual-lib.com>

<http://www.404manual.com>

<http://www.luxmanual.com>

<http://aubethermostatmanual.com>

Golf course search by state

<http://golfingnear.com>

Email search by domain

<http://emailbydomain.com>

Auto manuals search

<http://auto.somanuals.com>

TV manuals search

<http://tv.somanuals.com>