



WHISTLER

1753/1763

LASER-RADAR

DETECTOR



The Whistler Group, Inc. Corporate Headquarters

13016 N. Walton Blvd. • Bentonville, AR 72712
Tel (479) 273-6012 • Fax (479) 273-2927

Customer Return Center

1201 N. Dixieland Rd. • Rogers, AR 72756
Consumer Relations Tel (800) 531-0004

P/N 203332©2003 The Whistler Group, Inc.

If you have questions concerning the operation of this Whistler product please call:

Customer Service

1-800-531-0004

Monday - Friday
8:00 am - 5:00 pm CT

or visit our website
www.whistlergroup.com

Please keep the receipt in a safe place.
You may register your product online at
www.whistlergroup.com

For warranty verification purposes, a copy of your dated store receipt must still accompany any unit sent in for warranty work. If the unit is returned without a dated store receipt an out of warranty service charge applies.

Note: Your warranty period begins at the time of purchase. **The warranty is validated only by the dated store receipt!** Now is the time to record the serial number of the unit in the space provided in the warranty section of the manual.

INTRODUCTION

Dear Whistler Owner,

For many of us, a vehicle is more than just transportation. It can be a mobile office, communications or entertainment center, or simply an expression of our personality. Whistler products are designed to make the time you spend in your vehicle more productive, more fulfilling, safer, or just simply more fun. Our mission is to provide products that improve your driving experience.

Our new units offer not only bold new styling but also many features not found on other detectors at any price. We start with a proven detection circuitry with All Band™ and added top-of-the-line features such as:

- **Whistler's exclusive Safe Driving System** Incorporates the Safety Warning System (SWS), keeping you informed of road hazards as well as our unique Stay Alert system, it tests your alertness on long solo trips.
- **High Visibility Text Display** - Shows laser-radar information, VG-2 alerts, SWS messages and detector settings.
- **Real Voice®** - (1753 only) allows you to keep your eyes on the road.
- **Digital Compass** - (1763 only) provides cardinal points and direction in 5 degree increments.

Even though these units are packed full of features, they're still very easy to use. To fully utilize your unit to its potential, we recommend reading this entire manual or visit our FAQ page on our web site www.whistlergroup.com.

Note: On 1763 model the compass must be calibrated before use! See Compass Calibration set-up section.

Enjoy your new Whistler and please drive safely.

Sincerely,

The Whistler Group, Inc.

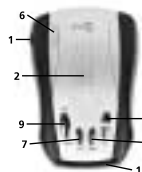
TABLE OF CONTENTS

Topic	Page
Model Features Summary	3
• Features Listing of 1753 / 1763	4 - 5
Installation	6 - 7
• Mounting Guidelines	5
• Windshield Mounting	6
• Power Connection and Fuse Replacement	7
Operation	8 - 16
• Compass Calibration Set-Up Operation	8
• Power On And Self-Test	9
• Memory / Beep Confirmation	9
• Audio Level Adjustment	9
• Integrated Real Voice®	10
• Compass Mode	10
• Auto Quiet / Quiet Mode	10 - 11
• City Mode	11 - 12
• Dim/Dark Mode	12
• Engaging / Disengaging VG-2 Detection	13
• Stay Alert	13
• Option Select Mode	14
• Teach / Tutorial Mode	16
• Vehicle Battery Saver Mode	16
Radar, Laser and VG-2 Alerts	17
• Radar Alerts	17
• Pulse Protection®	17
• Laser Audio / Visual Alerts	17
• Safety Warning System™	18
• VG-2 Audio / Visual Alerts	19
• Alert Priority	19
• Reset Features	20
• Care and Maintenance	20
Troubleshooting Guide	21
Are Detectors Legal?	22
Speed Monitoring Technologies	23
• Radar Facts	23
• Laser Facts	24
• Other Speed Detection Systems	25
• Radar Detector Detectors	25
Warranty Information	26 - 28
Specifications	29
Accessories	30

WHISTLER FEATURES

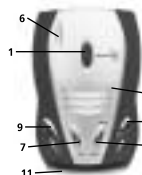
WHISTLER FEATURES

WHISTLER FEATURES



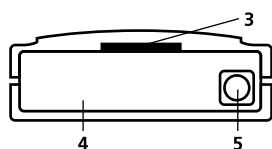
1753 FEATURES

- All Band™
- Real Voice® Alerts
- Text Display
- 360° Total Perimeter Protection
- Patented VG-2 Cloaking Technology™
- Safety Warning System™
- 3 City Modes
- Vehicle Battery Saver
- Setting Saver
- Stay Alert™
- Tutorial Mode
- Quiet Mode



1763 FEATURES

- All Band™
- Digital Compass Headings
- Text Display
- 360° Total Perimeter Protection
- Patented VG-2 Cloaking Technology™
- Safety Warning System™
- 3 City Modes
- Vehicle Battery Saver
- Setting Saver
- Stay Alert™
- Tutorial Mode
- Quiet Mode



Whistler's ergonomic and user-friendly design provides a new level of operating convenience. Special features include:

1. **Bracket Release Button** - Provides quick and easy release of the mounting bracket.
2. **Speaker** - Provides distinct audio warnings for X, K, Ka band radar, safety radar, laser and VG-2.
3. **Mounting Bracket Location** - Slot holds mounting bracket firmly.
4. **Radar Antenna** - Compact, high-efficiency antenna receives radar signals.
5. **Laser Antenna (Front)** - High gain optical lens provides increased sensitivity and field of view.
6. **Laser Antenna (Rear)** - An integrated optical waveguide provides superior detection of laser signals transmitted from behind.
7. **CITY/CITY 1/CITY 2 Button** - Switches out of highway mode to reduce the annoyance of false alerts typically encountered in urban driving areas.
8. **Quiet Button** - Pressing QUIET before a signal is detected engages Auto Quiet Mode which automatically reduces the audio level after the initial warning to a low audio level setting. Pressing QUIET during a radar/laser encounter silences audio alerts, while allowing visual alerts to keep you informed.
9. **Power/Dim/Dark/ Button** - Turns unit on/off and engages Dim/Dark modes (*press and hold for 2 seconds*).
10. **Volume Up/Down Buttons** - Adjust volume up or down. Pressing both buttons enters compass calibration mode (*1763 only*).

11. **High Visibility Text Display** - Provides distinct visual confirmation of signals detected such as VG-2 Laser, X-Band, K-Band, Ka-Band, Highway Mode, City Mode, Signal Strength, and Compass.

Note: Not all units have all features described.

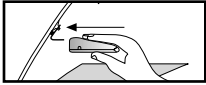
INSTALLATION

Mounting Guidelines

- Mount the unit as low and level as possible near the center of the windshield. Unit must be level for compass to function properly.
- Do not mount your unit behind wipers, ornaments, mirrored sunscreens, etc. These obstructions have metal surfaces which can affect radar and laser signals and reduce critical warning time. (**Regular tinted glass does not affect reception.**)
- Some windshields have an Instaclear™ or Electriclear™ type coating, which affect radar signals. Consult your dealer or the owner's manual supplied with your vehicle to determine if your windshield has this coating.
- Avoid placing unit in direct contact with windshield.
- To reduce the possibility of theft, conceal your unit when not in use.

Windshield Mounting

- Install the two suction cups and rubber bumper onto the bracket by fitting them into their holes.
- Press the suction cups onto the windshield at the location you have chosen. **IMPORTANT: Some newer cars have a plastic safety coating on the inside of the windshield. The suction cups may leave permanent marks on this type of surface. To find out if your vehicle has this type of windshield, check the owner's manual or ask your dealer. We recommend that you do not leave the suction cup bracket on the window in direct sunlight. If the detector is removed, this may cause blistering of the dash in some vehicles.**
- Slide the detector onto the bracket until it locks into place.
- If necessary, the unit may be leveled by bending the windshield bracket. Press the bracket release button and remove the detector before bending.

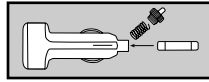


Power Connection

- Plug the small end of the power cord into the unit's power jack.
- Plug the large end into the vehicle's cigarette lighter.

Fuse Replacement

The lighter socket plug is equipped with a replaceable 2 amp 3AG fuse located behind the silver tip. To replace the fuse, carefully unscrew the tip of the plug. (**IMPORTANT: Unscrew slowly. The tip contains a spring which may fly out when disassembling.**) Insert the new fuse with the spring and screw on the tip. With use, screw cap on plug may loosen. Retighten occasionally.



Unscrew the tip of the lighter socket plug carefully when replacing the 2 amp fuse.

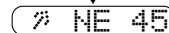
Compass Calibration Set-up

The unit will need to be calibrated in order for the compass to provide accurate readings. To calibrate the unit, perform the following procedure:

1. Mount the unit level in the center of the vehicle's windshield in which it will be used. Make sure there are no other magnetic sources near the detector (*i.e., speaker*).
2. Select a large clear area (*parking lot or field*) without any power lines.
3. While parked, press both volume buttons simultaneously until unit displays:



4. Drive vehicle slowly in at least two complete circles. If calibration does not automatically finish press both volume buttons simultaneously to complete calibration. The unit will beep twice and display, for example:

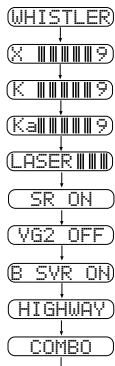


Note: If unit mounting is relocated in the vehicle, (*i.e., visor to windshield mounting or dash mounting*), or if the unit is moved to another vehicle, you must recalibrate the compass.

Power On and Self-Test

Each time your Whistler detector is turned on, an automatic self-test sequence confirms that the speaker and visual displays are functional.

- Press Power or apply Power. Display reads:



Self-Test Display for 1763 Model

Memory / Beep Confirmation

All features selected (*except Stay Alert and Quiet*) are retained in memory. Each time a button is pressed one beep confirms feature "on", two beeps confirm feature "off".

Audio Level Adjustment

The audio levels can be adjusted high to low, or low to high, in eight steps: (0) is no audio level, (7) the highest, (8) for 1753.

- Press Volume ▲ up to increase audio level.
- Press Volume ▼ down to decrease audio level.

As audio level is adjusted, beeps are provided and the display indicates volume level. 1763 example shown:



Integrated Real Voice®

When selected, Real Voice® will be used to articulate the following:

1. Band Identification
2. Safety Warning System messages

NOTE: In certain cases the voice message does not replicate the text message.

3. Feature Selection

Compass Mode

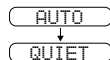
The 1763 is programmed from the factory in "Combo Mode". Combo mode means that the unit provides both compass readings as well as detecting laser/radar signals. Through the "Option Select Mode", either laser / radar or compass features can be turned off meaning, Radar equals detection of all police bands and laser; Compass equals no detection of police laser/radar.

Note: The unit must be calibrated to provide accurate compass readings. See Compass Calibration Set-up section on page 8.

Auto Quiet Mode

Auto Quiet reduces the selected audio level to level (1) approximately 5 seconds after a radar or safety radar signal is detected. The alert for any new signal within 20 seconds will resume at level (1). Auto Quiet does not affect VG-2 or laser alerts.

- Press Quiet/Menu (*before a signal is detected*) to engage Auto Quiet. Display reads:



- Once the Auto Quiet mode is engaged, you may cancel the audio alarm by pressing Quiet.
- Press Quiet (*when the unit is not alarming*) to cancel Auto Quiet mode.

Quiet Mode

Quiet cancels audio during an alert and any new alert within 20 seconds. After 20 seconds, approximately 2 beeps are provided on any new alert and unit then remains quiet.

- Press Quiet to cancel the audio.
- Press Quiet a second time during an alert to restore the standard audio alert pattern; or turn the unit off, then on.

City / City 1 / City 2 Mode

Whistler's Three Stage City Mode is designed to reduce the annoyance of automatic door openers, intrusion alarms and other devices which share frequencies with police radar.

- Press City to engage City. Display reads:



- Pressing City a second time engages City 1. Display reads:



- Pressing City a third time engages City 2. Display reads:



- Pressing City a fourth time cancels City, City 1, and City 2. Display reads:



In City Mode, weak speed/safety radar signals give an initial alarm of two beeps, and then remain quiet unless the signal becomes very strong. When the signal strength increases, two additional beeps are provided. In City 1 Mode, only the X band sensitivity is lowered. In City 2 Mode, X-band is not detected. **CAUTION:** When selecting this mode, some towns/small cities may still be using X band radar.

If Auto Quiet is engaged in City 1 or City 2 modes and the unit receives a strong radar signal, the unit performs the Auto Quiet feature. City Modes do not change the audio alert for laser or VG-2.

Dim / Dark Mode

Dim/Dark Mode reduces the illumination of the display.

- Press and hold Power for 2 seconds to reduce illumination to a Dim setting. Display reads:



- Pressing and holding the power button for 2 seconds a second time engages Dark Mode. Display reads:



Dim or dark can be engaged during an alert. In Dark Mode, the display goes dark for as long as a signal is being detected and for 20 seconds after, then the display returns to the dimmer setting.

- Pressing and holding the power button a third time restores full illumination to the display.

Engaging/Disengaging VG-2

See option select mode to turn this feature on.

Stay Alert Feature

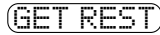
The Stay Alert Feature is designed to test a driver's alertness. To engage (*when unit is not alarming*):

- Press and hold City for approximately 2 seconds. Release button during or immediately after the alert is given. Display reads:



Within 30-60 seconds two beeps are sounded; to show alertness, the driver must press either the City or Quiet button within 3-5 seconds. If the button is pressed within 3-5 seconds, the cycle is repeated.

If a button was not pressed within 3-5 seconds alarm sounds and the display reads:



- Press Power to exit.

WARNING!!! Stay Alert is NOT intended as a substitute for adequate rest. You should NOT operate a vehicle if you are drowsy. During extended periods of vehicle operation, you should take frequent breaks. Improper reliance on the Stay Alert feature may result in vehicle damage, personal injury or death. **NEVER OPERATE A VEHICLE IF YOU ARE DROWSY.**

Option Select Mode

Entering Option Select Mode allows you to customize options such as Tone Select, Compass Select, Abbreviated Power Up Sequence and VG-2 Mode. When selecting options, the ▲▼ or quiet must be pressed within 20 seconds or options mode will automatically be exited. To enter:

1763 Chart

Press: Quiet	Display Reads:	Press to Change:	Option:
For 2 Seconds	COMBO	▲ or ▼	Combo = Radar and Compass Radar = Radar Only Compass = Comp
2nd Time	TONE 3	◆ = yes ◇ = no	Tone 1, 2, or 3 (3 Different X, K, or Ka patterns)
3rd Time	TEST YES	◆ = ON ◇ = OFF	X, K, Ka Audio tones. 1 beep during powerup.
4th Time	VG-2 OFF	◆ = ON ◇ = OFF	Turns VG-2 On Turns VG-2 Off
5th Time	SR ON	◆ = ON ◇ = OFF	Turns SWS On Turns SWS Off
6th Time	B SVR ON	◆ = ON ◇ = OFF	Battery Saver On Battery Saver Off

1753 Chart

Press: Quiet	Display Reads:	Press to Change:	Option:
For 2 Seconds	TONE 3	▲ or ▼	Tone 1, 2, or 3 (3 Different X, K, or Ka patterns)
2nd Time	TEST	◆ = yes ◇ = no	X, K, Ka Audio tones. 1 beep during powerup.
3rd Time	VG-2 OFF	◆ = ON ◇ = OFF	Turns VG-2 On Turns VG-2 Off
4th Time	SR ON	◆ = ON ◇ = OFF	Turns SWS On Turns SWS Off
5th Time	VOICE ON	◆ = ON ◇ = OFF	Real Voice engaged Real Voice disengaged
6th Time	B SVR	◆ = ON ◇ = OFF	Battery Saver On Battery Saver Off

* Factory Settings.
Press Power anytime to exit.

Teach/Tutorial Mode

Provides simulated alerts for each type of signal.

- Press City and Quiet simultaneously and release. Display reads:



- Press Power to exit.

Vehicle Battery Saver Mode

The Vehicle Battery Saver Mode automatically shuts off your detector within 3 hours if you forget to turn it off. The timer is reset if the detector is turned off, unplugged or any button is pressed before the 3 hours have expired. The detector will alert you with an audible and visual warning before it shuts off. Display reads:



During this warning you can reset the unit by pressing any button. This will reset the timer.

If the unit has automatically turned itself off, press the Power button to turn the unit back on. You can manually engage the Vehicle Battery Saver Mode by pressing and holding the City button until one beep is heard.

Refer to "Option Select Mode" for instructions for deactivating battery saver mode feature.

Speed Radar Audio / Visual Alerts

When X, K or Ka is detected the band ID and signal strength is displayed. The audio alert is continuous and has a geiger counter-like pattern. The faster the beep the closer or stronger the radar source. Example:



1 = weak signal, 9 = strong signal

Pulse Protection®

When a pulse type signal (*instant on strong signal*) is detected an urgent 3 second audio warning is sounded and the display reads:



After 3 seconds standard alert pattern continues.

LASER ALERTS

Laser Audio / Visual Alerts

When a laser signal is detected the word "Laser" and signal strength is displayed, the audio alert is continuous for a minimum of 3 seconds. Example:

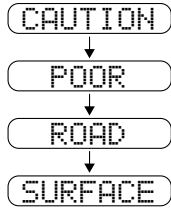


The more "||||" the closer the laser source.

In communities where transmitters are located, the Safety Warning System™ displays over 60 text messages. When Safety Radar is detected the audio alert is geiger counter-like.

Safety Warning System Text

Example: *Poor - Road - Surface.*



Note:

Not all areas have Safety Warning System™ transmitters.

VG-2 Audio/Visual Alerts

Note: You must turn this feature on in option select mode before it will detect VG-2.

When a VG-2 signal is detected, the detector “hides” its own radiated signal and becomes undetectable by the VG-2.

VG2 VG2

Text message confirms detection of VG-2.

Every 30 seconds, the detector checks for a VG-2 signal. If a VG-2 signal is still present, the unit continues to hide and repeats the VG-2 alert. If no signal is detected, two beeps are provided, indicating an “all clear” condition. During VG-2 Alert X, K, and Ka band signals cannot be received (*Reference page 25 for VG-2 information*).

Alert Priority

When two or more signals are received at the same time, the alert priority is:

1. Laser
2. VG-2
3. Speed Radar
4. Safety Radar

Example:

If X band is alerting, then suddenly VG-2 is detected, the VG-2 warning will override the X band alert.

Reset Features

All user features can be reset to factory settings.

- Unplug Power Cord from unit.
 - Press and hold Power and Quiet.
 - Plug Power Cord into unit.
 - Wait for 2 beeps.
 - Release Power and Quiet buttons.
- Unit is now reset.

1. Audio to level (4).
2. Display reads Highway.
3. Dim/Dark Mode to full illumination of display.
4. Auto Quiet Mode OFF.
5. VG-2 Detection Mode OFF.
6. Combo ON (1763 only).
7. Safety ON.
8. Vehicle Battery Saver ON.
9. Full Power Up sequence.
10. Default TONE 3.
11. Unit ON or OFF.

NOTE: Must calibrate compass after resetting features (1763 only).

Care and Maintenance

During the summer months, avoid prolonged exposure to direct sunlight by removing your unit from the dash when your vehicle is parked for an extended period of time.

Do not spray water, cleaners or polishes directly onto the unit. The spray may penetrate through the openings and damage the unit. Also, do not use any abrasive cleaners on the unit's exterior.

TROUBLESHOOTING

PROBLEM:

No display or audio.

- Check fuse in Whistler plug; replace if necessary with a 2 amp 3AG type.
- Check fuse for lighter socket; replace if necessary.
- Make sure lighter socket is clean.

PROBLEM:

Unit alarms when vehicle hits bumps.

- Check for loose lighter socket; tighten and clean.
- Check connections at both ends of power cord. Substitute another cord to determine if cord is defective. Return defective cord to the factory.

PROBLEM:

Unit alarms when using vehicle equipment or electrical accessories (brakes, power mirrors / windows, directionals, horn, etc.).

- Vehicle's electrical system, including battery and alternator, may have electrical noise. Install a filter capacitor (470mfd. 25 volt or larger capacitance value) on the back of the lighter socket.

PROBLEM:

Audio alerts are not loud enough.

- Cancel Auto Quiet Mode or City Mode.
- Check audio level setting (see page 9).

PROBLEM:

No X band signals.

- Cancel City 2.

PROBLEM:

Unit gives laser alert when accelerating.

- Possible bad or low quality distributor cap. Replace with high quality cap.

ARE DETECTORS LEGAL?

If difficulties occur which cannot be solved by information in this Troubleshooting Guide or our FAQ page at

www.whistlergroup.com
please call

Whistler Customer Service

at

1-800-531-0004

before returning your unit for service.

In Most States YES!

Laser/radar detectors are legal in every state (with the exception of Virginia and Washington, D.C., which have local regulations restricting the use of radar receivers in any vehicle) when used in automobiles or light trucks (under 10,000 lbs.). Similarly, when used in automobiles or light trucks, radar detectors are legal in almost every state. Exceptions are Virginia and Washington, D.C., which have local regulations restricting the use of radar receivers in any vehicle.

Concerning trucks over 10,000 lbs., the Federal Highway Administration (FHWA) issued a regulation, effective January, 1994 which prohibits radar and laser detector use in these types of vehicles nationally. Prior to the FHWA regulation, laws existed in the state of New York restricting the use of radar detectors in trucks over 18,000 lbs. and in Illinois in trucks over 26,000 lbs.

SPEED MONITORING TECHNOLOGIES

FCC ID HSXWH14 - 1753

FCC ID HSXWH13 - 1763

This device complies with part 15 of the FCC Rules. Operation is subject to the following two conditions:

1. This device may not cause harmful interference.
2. This device must accept any interference received, including interference that may cause undesired operation.

IMPORTANT

FCC requirements state that changes or modifications not expressly approved by Whistler could void the user's authority to operate the equipment.

Radar Facts

A radar gun operates by transmitting radio waves at certain frequencies which reflect off objects and are then picked up by the radar gun's receiving section. When a radar beam reflects off a moving target, a measurable frequency shift occurs. The radar unit converts this shift into miles per hour to determine your vehicle's speed.

Currently, the FCC (*Federal Communications Commission*) permits operation of traffic radar guns at:

X Band (10.500 - 10.550 GHz)
K Band (24.050 - 24.250 GHz)
Ka Band (33.400 - 36.000 GHz)

Note: A radar detector will not alarm if an officer is not transmitting on any one of the above radar bands.

Laser Facts

It's well documented that many radar guns cannot reliably provide the speed of a targeted vehicle that is traveling in a group of vehicles. In contrast, a laser gun can target a specific vehicle out of a line of traffic and determine its speed.

The advantage of laser over radar in terms of target identification is the result of the laser gun's narrow beam. A radar transmission can cover more than a four-lane highway at a distance of 1,000 feet, compared with a laser transmission which covers about 3 feet at the same distance.

For best protection, keep these points in mind:

- Because your vehicle's license plate or headlights are the laser gun's primary targets, mounting your Whistler detector on the dashboard can improve laser detection at short range.
- Do not follow closely behind any vehicle you can not see through. If you can't see past a vehicle ahead of you, chances are your detector won't either.
- The receiving range of your laser detector will not be the same as a radar detector. Laser guns are most often used at short range.

Whistler Laser/Radar detectors receive all current laser guns which operate at a laser wavelength of 905 +/- 10nm.

- Pro Laser™ I II III
- LT1 20-20
- Ultra Lyte

It is the responsibility of the individual radar detector owner to know and understand the laws in your area regarding the legality of the use of radar detectors.

- 24 -

Other Speed Detection Systems

Several techniques other than radar or laser are used to measure vehicle speeds. When these methods are being used, no detector can provide a warning. These techniques include:

- **Pacing** - A patrol car drives behind you and matches your driving speed.
- **Vascar / Aircraft** - The time it takes a vehicle to travel a known distance is measured.

Radar Detector Detectors (VG-2)

The Interceptor VG-2, or simply VG-2, is a microwave receiver used by police to detect signals radiated by the local oscillator of a radar detector. Because its purpose is to identify persons driving with radar detectors, the VG-2 is known as a "radar detector detector".

The VG-2 is the primary tool used by the police to identify radar detector equipped vehicles. If caught, in a state where detectors are illegal, (see page 22), drivers risk losing their radar detector and receiving a fine. In addition, instant-on radar is almost always used in combination with a VG-2, leaving unsuspecting motorists vulnerable to receiving two tickets — one potentially for speeding, the other for possession of a detector. Having a radar detector capable of detecting the VG-2 may alert you to the presence of a speed trap.

For more information on speed monitoring technologies, please visit our FAQ page on our website:

www.whistlergroup.com

It is the responsibility of the individual radar detector owner to know and understand the laws in your area regarding the legality of the use of radar detectors.

- 25 -

Consumer Warranty

This Whistler Radar/Laser detector is warranted to the original purchaser for a period of one year from the date of original purchase against all defects in materials and workmanship. This limited warranty is void if the unit is abused, modified, installed improperly, if the housing has been removed, or if the serial number is missing. There are no express warranties covering this product other than those set forth in this warranty. All express or implied warranties for this product are limited to one year. Whistler is not liable for damages arising from the use, misuse, or operation of this product.

Service Under Warranty

During the warranty period, defective units will be repaired without charge to the purchaser when returned with a dated store receipt to the address below. Units returned without a dated store receipt will be handled as described in section "Service Out Of Warranty." Due to the specialized equipment necessary for testing a radar/laser receiver, there are no authorized service stations for Whistler brand detectors other than the factory.

When returning a unit for service under warranty, please follow these instructions:

1. Ship the unit in the original carton or in a suitable sturdy equivalent, fully insured, with return receipt requested to:

Whistler Repair Dept.

1201 North Dixieland Rd. • Rogers, AR. 72756

Please allow 3 weeks turnaround time.

IMPORTANT: Whistler will not assume responsibility for loss or damage incurred in shipping. Therefore, please ship your unit insured with return receipt requested.

- 26 -

WARRANTY INFORMATION

Service Under Warranty (Continued)

2. Include with your unit the following information, clearly printed:
 - Your name and street address (for shipping via UPS).
 - Daytime telephone number. (No P.O. Box please).
 - E-mail address (if applicable).
 - A detailed description of the problem (e.g., "Unit per forms self-test but does not respond to radar").
 - A copy of your dated store receipt or bill of sale.
3. Be certain your unit is returned with its serial number. For reference, please write your unit's serial number in the following space:
s/n _____.

Units without serial numbers are not covered under warranty.

IMPORTANT: To validate that your unit is within the warranty period, make sure you keep a copy of your dated store receipt. You may register your warranty online at www.whistlergroup.com, however, for warranty verification purposes, a copy of your dated store receipt must accompany any unit sent in for warranty work.

There are no authorized service stations for Whistler brand detectors other than the Whistler factory.

- 27 -

WARRANTY INFORMATION

Service Out Of Warranty

Units will be repaired at "out of warranty" service rates when:

- The unit's original warranty has expired.
- Dated store receipt is not supplied.
- The unit has been returned without its serial number.
- The unit has been abused, modified, installed improperly, or had its housing removed.

The minimum out of warranty service fee for your Whistler detector is \$55.00 (U.S.). If you require out of warranty service, please return your unit as outlined in the section "Service Under Warranty" along with a certified check or money order for \$55.00. Payment may also be made by MasterCard, VISA or American Express; **personal checks are not accepted.**

In the event repairs cannot be covered by the minimum \$55.00 service fee, you will be contacted by a Whistler technical service specialist who will outline options available to you. If you elect not to have your unit repaired, it will be returned to you and your repair fee refunded. **CODs will not be accepted!** Therefore, please ship your unit insured with return receipt requested.

IMPORTANT: When returning your unit for service, be certain to include a daytime telephone number and email address (if applicable).

Customer Service

If you have questions concerning the operation of your Whistler detector, or require service during or after the warranty period, please call:

**Customer Service
1-800-531-0004**

Representatives are available to answer your questions
Monday - Friday
8:00 a.m. to 5:00 p.m (CT).

- 28 -

SPECIFICATIONS

1753 Dimensions: 1.3"H x 2.85"W x 4.3"L
1753 Weight: 6.5 oz.

1763 Dimensions: 1.45"H x 2.95"W x 4.65"L
1763 Weight: 6.5 oz.

Laser Wavelength:
905 ± 50 nanometers (nm)

Radar Frequencies:
10.500 - 10.550 GHz (X Band)
24.050 - 24.250 GHz (K Band)
33.400 - 36.000 GHz (Ka Superwideband)

Operating Temperature Range:
-20° C to +80° C (-4° F to +176° F)

Power Requirements:
Operational 12 to 15 volts DC, 250mA nominal
Vehicle Battery Saver, 30mA nominal.

One or more U.S. patents may apply:
#4,315,261
#5,146,227
#5,379,456
#5,666,120
#5,990,821

Specifications are subject to change without notice.

- 29 -

ACCESSORIES

The following accessories can be ordered directly from Whistler by calling **1-800-531-0004** or visit our online store at www.whistlergroup.com

Order Code	Description	Price
202138	Visor Bracket	\$6.95
202140	Windshield Bracket Kit	\$9.95
206552	Straight Power Cord (5')	\$14.95
206553	Coiled Power Cord (7')	\$15.95
206880	Hardwire Kit (10') <i>(for wiring to fuse box)</i>	\$9.95
206666	*Modular Cord Package <i>(includes coiled and straight cords, and power adapter)</i>	\$17.95
159032	Package of 8 Suction Cups	\$2.95
402081	Dash Pad	\$6.95
206660	Straight Modular Cord and Socket Multiplier	\$11.95
206661	Coiled Modular Cord and Socket Multiplier	\$12.95

* Modular: Interconnecting pieces cord and plug.
Shipping and handling (per order) \$5.00.
Prices are subject to change without notice.

Free Manuals Download Website

<http://myh66.com>

<http://usermanuals.us>

<http://www.somanuals.com>

<http://www.4manuals.cc>

<http://www.manual-lib.com>

<http://www.404manual.com>

<http://www.luxmanual.com>

<http://aubethermostatmanual.com>

Golf course search by state

<http://golfingnear.com>

Email search by domain

<http://emailbydomain.com>

Auto manuals search

<http://auto.somanuals.com>

TV manuals search

<http://tv.somanuals.com>