

# OWNER'S MANUAL



## WHISTLER 1710A/1730A 1733/1734 LASER-RADAR DETECTOR

### The Whistler Group Corporate Headquarters

13016 N. Walton Blvd. • Bentonville, AR 72712  
Tel (479) 273-6012 • Fax (479) 273-2927

### Customer Return Center

1201 N. Dixieland Rd. • Rogers, AR 72756  
Consumer Relations Tel (800) 531-0004

P/N 1710A/1730A/1733/REV2, © Whistler 2003

## INTRODUCTION

Dear Whistler Owner,

For many of us, a vehicle is more than just transportation. It can be a mobile office, communications or entertainment center, or simply an expression of our personality. Whistler products are designed to make the time you spend in your vehicle more productive, more fulfilling, safer, or just simply more fun. Our mission is to provide products that improve your driving experience.

Your new Whistler laser/radar detector detects all radar, laser and safety radar systems.

To fully acquaint yourself with the operation of your Whistler and to better understand the differences between detecting radar, laser and safety radar signals, we recommend reading this entire manual or visit our FAQ page on our website [www.whistlergroup.com](http://www.whistlergroup.com)

Enjoy your Whistler and please drive safely.

Sincerely,

The Whistler Group, Inc.

**\* Please note: This unit is a 1710A/1730A even though "A" is not indicated on the unit.**

If you have questions concerning the operation of this Whistler product please call:

### CUSTOMER SERVICE

1-800-531-0004

Monday - Friday • 8:00 am - 5:00 pm CT

or visit our website

[www.whistlergroup.com](http://www.whistlergroup.com)

Please keep the receipt in a safe place. **You may register your product online at [www.whistlergroup.com](http://www.whistlergroup.com).** For warranty verification purposes, a copy of your dated store receipt must still accompany any unit sent in for warranty work. If the unit is returned without a dated store receipt an out of warranty service charge applies. **Note:** Your warranty period begins at the time of purchase. The warranty is validated **only** by the dated store receipt! Now is the time to record the serial number of the unit in the space provided in the warranty section of the manual.

## TABLE OF CONTENTS

Topic	Page
<b>Model Features Summary</b>	3 - 8
<b>Installation</b>	9 - 10
• Mounting Guidelines	
• Windshield Mounting	
• Power Connection And Fuse Replacement	
<b>Operation</b>	11 - 12
• Power On And Self-Test	
• Self-Test Mute	
• Feature Engaged Confirmation	
• Audio Level Adjustment	
• Auto Quiet/ Quiet Modes	
• City Modes	
• Dim/Dark Modes	
• Engaging/Disengaging VG-2 Detection	
• Vehicle Battery Saver Mode	
<b>Radar, Laser And VG-2 Alerts</b>	12 - 16
• Radar Alerts	
• Pulse Protection*	
• Safety Radar Audio/Visual Alerts	
• Laser Audio/Visual Alerts	
• VG-2 Audio/Visual Alerts	
• Alert Priority	
• Reset Features	
• Care Maintenance	
<b>Troubleshooting Guide</b>	17
<b>Are Detectors Legal?</b>	18
<b>Speed Monitoring</b>	19 - 21
• Radar Facts	
• Laser Facts	
• Other Speed Detection Systems	
<b>Warranty Information</b>	22 - 24
<b>Specifications</b>	25
<b>Accessories</b>	26

## FEATURE DESCRIPTIONS

Whistler's ergonomic and user-friendly design provides a new level of operating convenience. Special features include: **Note: Not all units have all features listed.**

- Bracket Release Button** – Provides quick and easy release of the mounting bracket.
- Speaker** – Provides distinct audio warnings for X, K, Ka band radar, safety radar, laser and VG-2.
- Mounting Bracket Location** – Slot holds mounting bracket firmly.
- Radar Antenna** – Compact, high-efficiency antenna receives radar signals.
- Front Laser Antenna** – High gain optical lens provides increased sensitivity and field of view for leading-edge laser detection.
- Rear Laser Antenna** – An integrated optical waveguide provides superior detection of laser signals transmitted from behind.
- City Button** - Reduces the annoyance of false alerts typically encountered in urban driving areas.
- Quiet/Menu Button** - Pressing QUIET before a signal is detected engages Auto Quiet Mode which automatically reduces the audio level after the initial warning to a low audio level setting. Pressing QUIET during a radar/laser encounter silences audio alerts, while allowing visual alerts to keep you informed. Pressing and holding for 2 seconds allows you to enter Option Select Mode (see page 12).
- Power / Volume Control** – Turns unit on/off and adjusts audio level. (not 1734)

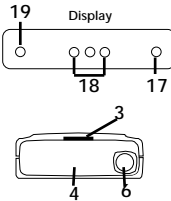
3

### 1710A

Whistler 1710A



- Feature Listing of 1710A**
- LED Display
  - All Band
  - City Mode
  - Power Indicator



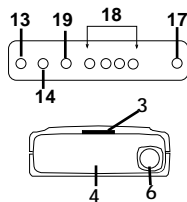
- Separate Radar
- Alert Strength
- Alert Priority
- City Mode

### 1730A

Whistler 1730A



- Feature Listing of 1730A**
- LED Display
  - All Band
  - 360° Protection
  - VG-2 Cloaking



- City Mode
- Quiet/Auto Quiet Mode
- Vehicle Battery Saver
- Safety Warning System

5

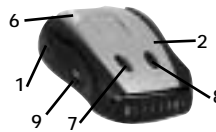
## FEATURE DESCRIPTIONS

- Power/Dim Dark (1734)** - Turns unit on/off and engages Dim/Dark modes (press and hold for 2 seconds).
- Volume Up/Down Buttons** – Adjust volume up or down.
- Icon Display** - offers easy-to-read display to indicate power, city mode, radar band identification, and signal strength.  
**LED Display** - multiple indicator lights help you determine the radar source and your distance from it.
- 7 Segment Display (1734 only)** - provides numeric signal strength indicator.
- VG-2/Laser Indicator** – Shows the unit is receiving VG-2 or laser signals.
- X-band Indicator** - Shows the unit is receiving an X-band signal.  
**K/Ka-band Indicator** - Shows the unit is receiving a K or Ka-band signal
- K-band Indicator** - shows the unit is receiving a K-band signal.
- Ka-band Indicator** - Shows the unit is receiving a Ka-band signal.
- H** - Unit is in Highway mode.
- C - City Indicator** - Shows that the unit is operating in city mode.
- Signal Strength Indicator** - Shows the strength of the signal being detected.
- Power On Indicator** - shows that the unit is receiving power.

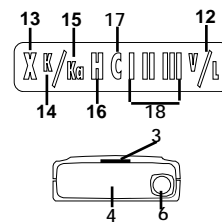
4

### 1733 FEATURES

Whistler 1733



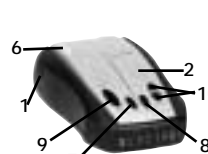
- Feature Listing of 1733**
- ICON Display
  - All Band
  - 360° Protection
  - VG-2 Cloaking



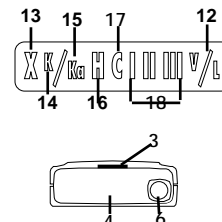
- City Mode
- Quiet/Auto Quiet Mode
- Vehicle Battery Saver
- Safety Warning System

### 1734

Whistler 1734



- Feature Listing of 1734**
- 7 Segment Display
  - All Band
  - 360° Protection
  - VG-2 Cloaking



- City Mode
- Quiet/Auto Quiet Mode
- Vehicle Battery Saver
- Safety Warning System

6

## INSTALLATION

### Mounting Guidelines

- Mount the unit as low as possible near the center of the windshield.
- Do not mount your unit behind wipers, ornaments, mirrored sunscreens, etc. These obstructions have metal surfaces which can affect radar and laser signals and reduce critical warning time. (Regular tinted glass does not affect reception.)
- Some windshields have an Instaclear™ or Electriclear™ type coating, which affect radar signals. Consult your dealer or the owner's manual supplied with your vehicle to determine if your windshield has this coating.
- Avoid placing unit in direct contact with windshield.
- To reduce the possibility of theft, conceal your unit when not in use.

### Windshield Mounting

- Install the two suction cups and rubber bumper onto the bracket by fitting them into their holes.
- Press the suction cups onto the windshield at the location you have chosen. **IMPORTANT:** Some newer cars have a plastic safety coating on the inside of the windshield. The windshield bracket may leave permanent marks on this type of surface. To find out if your vehicle has this type of windshield, check the owner's manual or ask your dealer. We recommend that you do not leave the suction cup bracket on the window in direct sunlight. If the detector is removed, this may cause blistering of the dash in some vehicles.
- Slide the detector onto the bracket until it locks into place.
- If necessary, the unit may be leveled by bending the windshield bracket. Press the bracket release button and remove the detector before bending.

7

## OPERATION

### Feature Engaged Confirmation

Each time a button is pressed one beep confirms feature "on", two beeps confirm feature "off".

### Quiet Mode

The QUIET Button accesses one of two muting options.

Note: 1734 will go to volume level 1 instead of clicking.

### Auto Quiet Mode

Pressing QUIET before a radar signal is detected provides an alternate alert pattern, consisting of four beeps (indicating X, K, Ka or Safety Radar) followed by clicking. The clicking will continue for as long as the detected signal is present or any new signal is detected within 20 seconds, becoming more rapid as the strength of the signal increases.

If Auto Quiet is engaged, pressing QUIET while the unit is alarming will cancel the beeps or clicking.

Pressing QUIET a second time when the unit is not alarming will cancel Auto Quiet mode and restore the continuous audio alert pattern.

### Vehicle Battery Saver Mode

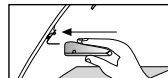
The Vehicle Battery Saver Mode automatically shuts off your detector after 6 hours if you forget to turn it off. The timer is reset if the detector is turned off, unplugged or any button is pressed before the time has expired. The detector will alert you with an audible and visual warning before it shuts off.

9

## INSTALLATION

### Visor Mounting (Optional Accessory)

- Slide the visor bracket into the bracket mounting slot.
- Clip the visor bracket onto the visor making sure it is relatively level and has a clear view of the road.



### Power Connection

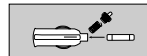
- Plug the small end of the power cord into the unit's power jack.
- Plug the large end into the vehicle's cigarette lighter.

### Fuse Replacement

The lighter socket plug is equipped with a replaceable 2 amp 3AG fuse located behind the silver tip. To replace the fuse, carefully unscrew the tip of the plug.

**IMPORTANT: Unscrew slowly. The tip contains a spring which may fly out when disassembling.**

Insert the new fuse with the spring and screw on the tip. **With use, screw cap on plug may loosen. Retighten occasionally.**



Unscrew the tip of the lighter socket plug carefully when replacing the 2 amp fuse.

8

## LASER/RADAR ALERTS

During this warning you can momentarily reset the unit by pressing any button. This will reset the timer.

If the unit has automatically turned itself off, press any button to turn the unit back on.

### City Mode

Whistler's City Mode is designed to reduce the annoyance of automatic door openers, intrusion alarms and other devices which share frequencies with police radar.

- Press City to engage City.
- Press City a second time cancels City Mode.

In City Mode, weak speed/safety radar signals give an initial alarm of two beeps, and then the unit remains quiet unless the signal strength increases, two additional beeps are provided.

Note: 1734 has 3 city modes

### City/City 1/City 2 Mode

Whistler's Three Stage City Mode is designed to reduce the annoyance of automatic door openers, intrusion alarms and other devices which share frequencies with police radar.

- Press City to cancel Highway mode and engage City. Display will switch from "H" to "C".
- Pressing City a second time engages City 1.
- Pressing City a third time engages City 2.

Note: After 3 seconds, I or II City Mode indicator turns off.

- Pressing City a fourth time returns to Highway mode.

10

## LASER/RADAR ALERTS

### City Mode (cont.)

In City Mode, weak speed/safety radar signals give an initial alarm of two beeps, and then the unit remains quiet unless the signal becomes very strong. When the signal strength increases, two additional beeps are provided. In City 1 Mode, only the X band sensitivity is lowered. In City 2 Mode, X-band is not detected.

**CAUTION:** Some towns/small cities may still be using X band radar. If Auto Quiet is engaged in City 1 or City 2 modes and the unit receives a strong radar signal, the unit performs the Auto Quiet feature. City Modes do not change the audio alert for laser or VG-2.

### Dim/Dark Mode

Dim/Dark Mode reduces the illumination of the display.

- Press and hold Power for 2 seconds to reduce illumination to a Dim setting.
- Pressing and holding the power button for 2 seconds a second time engages Dark Mode. The display illumination is further reduced.

Dim or dark can be engaged during an alert. In Dark Mode, the display goes dark for as long as a signal is being detected and for 20 seconds after, then the display returns to the dimmer setting.

- Pressing and holding the power button a third time restores full illumination to the display.

## 11

## LASER/RADAR ALERTS

It is important to respond promptly to a pulse alert, since warning time may be minimal.

### Audio Level Adjustment

The audio levels can be adjusted high to low, or low to high, in seven steps:

- Press Volume  $\uparrow$  up to increase audio level.
- Press Volume  $\downarrow$  down to decrease audio level.

As audio level is adjusted, beeps are provided and the display indicates volume level. The more "bars" illuminated, the higher the volume.

When your detector detects a laser signal, the laser audio alert is sounded and the Laser indicator will illuminate for as long as the signal is present, or for a minimum of three seconds.

When the laser signal is no longer detected, the audio warning ends, but the indicator continues to flash slowly for three seconds, indicating a laser encounter has just occurred.

### Laser Tips

If you are the targeted vehicle, a laser gun can often determine your speed within a few seconds after you receive an alert. In this situation there is generally no time to safely adjust your speed. However, if you are traveling near or behind the targeted vehicle and receive an alert, response time should be sufficient. Any laser alert, regardless of duration, requires immediate action!

## 13

## LASER/RADAR ALERTS

### Highway Mode

Highway mode provides full audio warnings any time radar (X, K, Ka, Safety Radar) or laser signals are detected, and is recommended for open road driving.

### Radar Audio Alerts

When your Whistler detector encounters traffic radar, it provides a distinctive audio tone for the specific radar band detected: X, K, or Ka.

The audio alerts are continuous, but have a Geiger counter-like pattern to help you determine your distance from the radar source; the faster the beeping, the stronger the signal strength will be.

### Pulse Protection\*

Pulse (or instant-on) radar is more difficult to detect than conventional radar because it remains "off" until activated to measure the speed of a targeted vehicle.

When a pulse type transmission is detected, your Whistler detector sounds an urgent 3-second audio warning and flashes the Alert strength indicators at their fastest rate. After the 3-second pulse alert, the standard alert pattern continues for as long as the signal is present.

## 12

## VG-2 ALERTS

### VG-2 Detection Mode

The VG-2, also known as a "radar detector detector," is a special receiver used by police to detect signals radiated by a radar detector. See page 21 for more information on VG2.

1710A: Does not have VG-2 cloaking.

1730A: Press the VG-2 button once, unit beeps once

1733: Press and hold the quiet button, unit beeps once.

1734:

When a VG-2 signal is detected the VG-2 alert is sounded. After 3 seconds the audio is cancelled and the VG-2 indicator flashes at a slower rate. This cycle is repeated if the VG-2 signal is again detected.

During the period a VG-2 signal is detected, a radar signal cannot be detected. However, because the VG-2 alert has confirmed that a patrol car is nearby, you are already aware of the potential for speed monitoring and can adjust your speed accordingly. Laser detection is not affected while a VG-2 signal is detected.

Note: VG-2 must be turned on each time the unit is turned on to receive VG-2 Alerts.

## 14

## SAFETY RADAR ALERTS

### Safety Radar Audio/Visual Alerts

Your Whistler detector detects the Safety Warning System™. In communities where transmitters are located, this provides advanced warning of various road hazards including accident sites, highway construction, emergency vehicles, etc. and enables you to respond more appropriately to potentially dangerous conditions.

NOTE: You will not be able to receive SWS alerts if transmitters are not located in your area. For a current list of transmitters please visit [www.safetyradar.com](http://www.safetyradar.com)

## CARE & MAINTENANCE

### Care And Maintenance

During the summer months, avoid prolonged exposure to direct sunlight by removing your unit from the dash when your vehicle is parked for an extended period of time. Do not spray water, cleaners, or polishes directly onto the unit. The spray may penetrate through the openings and damage the unit. Also, do not use any abrasive cleaners on the units exterior.

## 15

### TROUBLESHOOTING GUIDE

Your Whistler detector is expertly engineered and designed to exacting quality standards to provide you with reliable, trouble-free operation. If your unit has been correctly installed following the guidelines in this manual, but is not operating optimally, please refer to the troubleshooting guide below.

**PROBLEM: No display or audio.**

- Check fuse in Whistler plug; replace if necessary with a 2 amp 3AG type.
- Check fuse for lighter socket; replace if necessary.
- Make sure lighter socket is clean.

**PROBLEM: Unit alarms when vehicle hits bumps.**

- Check for loose lighter socket; tighten and clean.
- Check connections at both ends of power cord. Substitute another cord to determine if cord is defective. Return defective cord to the factory.

**PROBLEM: Unit alarms when using vehicle electrical accessories (brakes, power mirrors/windows, directionals, horn, etc.).**

- Vehicle's electrical system, including battery and alternator, may have electrical noise. Install a filter capacitor (470mfd. 25 volt or larger capacitance value) on the back of the lighter socket.

**PROBLEM: Audio alerts are not loud enough.**

- Cancel Auto Quiet Mode or City Mode.
- Check audio level setting (see page ?? & ??).

**PROBLEM: Unit gives laser alert when accelerating.**

- Possible bad or low quality distributor cap. Replace with high quality cap.

If difficulties occur which cannot be solved by information in this Troubleshooting Guide, please call Whistler Customer Service at 1-800-531-0004 or visit our FAQ page at [www.whistlergroup.com/faq-detectors.asp](http://www.whistlergroup.com/faq-detectors.asp), before returning your unit for service.

## 17

## 16

### ARE DETECTORS LEGAL?

**In Most States YES!**

Laser detectors are completely legal in every state when used in automobiles or light trucks (under 10,000 lbs.). Similarly, when used in automobiles or light trucks, radar detectors are legal in almost every state. Exceptions are Virginia and Washington, D.C., which have local regulations restricting the use of radar receivers in any vehicle. Concerning trucks over 10,000 lbs., the Federal Highway Administration (FHWA) issued a regulation, effective January, 1994 which prohibits radar and laser detector use in these types of vehicles nationally. Prior to the FHWA regulation, laws existed in the state of New York restricting the use of radar detectors in trucks over 18,000 lbs. and in the state of Illinois in trucks over 26,000 lbs.

FCC ID HSXWH01 - 1710A/1730A/1733  
FCC ID HSXWH10 - 1710A/1730A/1733  
FCC ID HSXWH14 - 1734

This device complies with part 15 of the FCC Rules.

Operation is subject to the following two conditions: (1) This device may not cause harmful interference, and (2) this device must accept any interference received, including interference that may cause undesired operation.

**IMPORTANT**

FCC requirements state that changes or modifications not expressly approved by Whistler could void the user's authority to operate the equipment.

## 18

## SPEED MONITORING

### Radar Facts

A radar gun operates by transmitting radio waves at certain frequencies which reflect off objects and are then picked up by the radar gun's receiving section. When a radar beam reflects off a moving target, a measurable frequency shift occurs. The radar unit converts this shift into miles per hour to determine your vehicle's speed. Currently, the FCC (Federal Communications Commission) permits operation of traffic radar guns at X Band (10.500 - 10.550 GHz), K Band (24.050 - 24.250 GHz), and Ka Band (33.400 - 36.000 GHz).  
Note: A radar detector will not alarm if an officer is not transmitting on any one of the above radar bands.

### Laser Facts

It's well documented that many radar guns cannot reliably provide the speed of a targeted vehicle that is traveling in a group of vehicles. In contrast, a laser gun can target a specific vehicle out of a line of traffic and determine its speed. The advantage of laser over radar in terms of target identification is the result of the laser gun's narrow beam. A radar transmission can cover more than a four-lane highway at a distance of 1,000 feet, compared with a laser transmission which covers about 3 feet at the same distance. For best protection, keep these points in mind:

19

## SPEED MONITORING

### Radar Detector Detectors (VG-2)

The Interceptor VG-2, or simply VG-2, is a microwave receiver used by police to detect signals radiated by the local oscillator of a radar detector. Because its purpose is to identify persons driving with radar detectors, the VG-2 is known as a "radar detector detector".

The VG-2 is the primary tool used by the police to identify radar detector equipped vehicles. If caught, in a state where detectors are illegal, (see page ??), drivers risk losing their radar detector and receiving a fine. In addition, instant-on radar is almost always used in combination with a VG-2, leaving unsuspecting motorists vulnerable to receiving two tickets - one potentially for speeding, the other for possession of a detector.

Having a radar detector capable of detecting the VG-2 may alert you to the presence of a speed trap. For more information on speed monitoring technologies, please visit our FAQ page on our website:

[www.whistlergroup.com](http://www.whistlergroup.com)

It is the responsibility of the individual radar detector owner to know and understand the laws in your area regarding the legality of the use of radar detectors.

21

## SPEED MONITORING

- Because you vehicle's license plate or headlights are the laser gun's primary targets, mounting your Whistler detector on the dashboard can improve laser detection at short range.
- Do not follow closely behind any vehicle you cannot see through. If you can't see past a vehicle ahead of you, chances are your detector won't either.
- The receiving range of your laser detector will not be the same as a radar detector. Laser guns are most often used at short range.

Whistler Laser/Radar detectors receive all current laser guns which operate at a laser wavelength of 905 +/- 10mm.

- Pro Laser™ I II III
- LT1 20-20
- Ultra Lyte

### Other Speed Detection Systems

Several techniques other than radar or laser are used to measure vehicle speeds. When these methods are being used, no detector can provide a warning. These techniques include:

- Pacing - A patrol car drives behind you and matches your driving speed.
- Vascar/Aircraft - The time it takes a vehicle to travel a known distance is measured.

20

## WARRANTY INFORMATION

### Consumer Warranty

This Whistler Laser/Radar detector is warranted to the original purchaser for a period of one year from the date of original purchase against all defects in materials and workmanship. This limited warranty is void if the unit is abused, modified, installed improperly, if the housing has been removed, or if the serial number is missing. There are no express warranties covering this product other than those set forth in this warranty. All express or implied warranties for this product are limited to one year. Whistler is not liable for damages arising from the use, misuse, or operation of this product.

### Service Under Warranty

During the warranty period, defective units will be repaired without charge to the purchaser when returned with a dated store receipt to the address below. Units returned without dated store receipt will be handled as described in section "**Service Out Of Warranty.**" Due to the specialized equipment necessary for testing a laser/radar receiver, there are no authorized service stations for Whistler brand detectors other than Whistler.

When returning a unit for service under warranty, please follow these instructions:

1. Ship the unit in the original carton or in a suitable sturdy equivalent, fully insured, with return receipt requested to:

Whistler Repair Dept.  
1201 North Dixieland Rd  
Rogers, AR. 72756

22

## WARRANTY INFORMATION

**IMPORTANT:** Whistler will not assume responsibility for loss or damage incurred in shipping. Therefore, please ship your unit insured with return receipt requested. **CODS will not be accepted!**

2. Include with your unit the following information, clearly printed:
  - Your name and street address (for shipping via UPS), a daytime telephone number and email address, if applicable.
  - A detailed description of the problem (e.g., "Unit performs self-test but does not respond to radar").
  - A copy of your dated store receipt or bill of sale.

3. Be certain your unit is returned with its serial number. For reference, please write your units serial number in the following space: s/n\_\_\_\_\_.

Units without serial numbers are not covered under warranty.

**IMPORTANT:** To validate that your unit is within the warranty period, make sure you keep a copy of your dated store receipt. You may register your warranty online at [www.whistlergroup.com](http://www.whistlergroup.com), however, for warranty verification purposes, a copy of your dated store receipt must accompany any unit sent in for warranty work.

## 23

### SPECIFICATIONS

1710A Dimensions: 1.2" H x 2.72" W x 3.9" L  
Weight: 5.5 oz.

1730A Dimensions: 1.3" H x 2.9" W x 3.9" L  
Weight: 5.5 oz.

1733 Dimensions: 1.3" H x 2.9" W x 3.9" L  
Weight: 5.5 oz.

1734 Dimensions: 1.3" H x 2.9" W x 3.9" L  
Weight: 5.5 oz.

Laser Wavelength:  
905 ± 50 nanometers (nm)

Radar Frequencies:  
10.500 - 10.550 GHz (X Band)  
24.050 - 24.250 GHz (K Band)  
33.400 - 36.000 GHz (Ka Superwideband)

Operating Temperature Range:  
-20° C to +80° C (-4° F to +176° F)

Power Requirements:  
Operational 12 to 15 volts DC, 250mA nominal  
Vehicle Battery Saver, 30mA nominal.

One or more U.S. may patents apply:  
#4,315,261  
#5,146,227  
#5,379,456  
#5,666,120  
#5,990,821

Specifications are subject to change without notice.

## 25

## WARRANTY INFORMATION

### Service Out of Warranty

Units will be repaired at "out of warranty" service rates when:

- The units original warranty has expired.
- Dated store receipt is not supplied.
- The unit has been returned without its serial number.
- The unit has been abused, modified, installed improperly, or had its housing removed.

The minimum out of warranty service fee for your Whistler detector is \$35.00 (U.S.). If you require out of warranty service, please return your unit as outlined in the section "Service Under Warranty" along with a certified check or money order for \$35.00. Payment may also be made by MasterCard, VISA or American Express; **personal checks are not accepted.** In the event repairs cannot be covered by the minimum \$35.00 service fee, you will be contacted by a Whistler technical service specialist who will outline options available to you. If you elect not to have your unit repaired, it will be returned to you along with your certified check or money order.

**IMPORTANT:** When returning your unit for service, be certain to include a daytime telephone number, and email address (if applicable).

### Customer Service

If you have questions concerning the operation of your Whistler detector, or require service during or after the warranty period, please call Customer Service at:

**1-800-531-0004.**

Representatives are available to answer your questions Monday - Friday from 8:00 a.m. to 5:00 p.m. (CT).

## 24

### ACCESSORIES

The following accessories can be ordered directly from Whistler by calling 1-800-531-0004 or visit our online store at [www.whistlergroup.com](http://www.whistlergroup.com)

Order Code	Description	Price
202138	Visor Bracket	\$ 6.95
202140	Windshield Bracket Kit	\$ 9.95
206552	Straight Power Cord (5')	\$ 14.95
206553	Coiled Power Cord (7')	\$ 15.95
206880	Hardwire Kit (10' ) (for wiring to fuse box)	\$ 9.95
206666	Modular Cord Package (includes coiled and straight cords, and power adapter)	\$ 17.95
159032	Package of 8 Suction Cups	\$ 2.95
402081	Dash Pad	\$ 6.95
206660	Straight Modular Cord and Socket Multiplier	\$ 11.95
206661	Coiled Modular Cord and Socket Multiplier	\$ 12.95

\*Modular: Interconnecting pieces cord and plug. Shipping and handling (per order) \$5.00 Prices are subject to change without notice.

## 26

## Free Manuals Download Website

<http://myh66.com>

<http://usermanuals.us>

<http://www.somanuals.com>

<http://www.4manuals.cc>

<http://www.manual-lib.com>

<http://www.404manual.com>

<http://www.luxmanual.com>

<http://aubethermostatmanual.com>

Golf course search by state

<http://golfingnear.com>

Email search by domain

<http://emailbydomain.com>

Auto manuals search

<http://auto.somanuals.com>

TV manuals search

<http://tv.somanuals.com>