



# LukWerks Spy Camera

The LukWerks Spy Camera is the world's first networked Spy Camera that delivers the power of professional-grade video security in a package that is easy to set up and affordable. The Spy Camera masquerades as a sleek, fully functioning digital clock. This hidden camera is perfect for coverage of any area of the home or small business that requires discreet observance.

At the heart of the spy camera is a powerful 400 MHz onboard processor, which powers the camera's ability to provide superior image quality, motion detection, and intelligent image management.

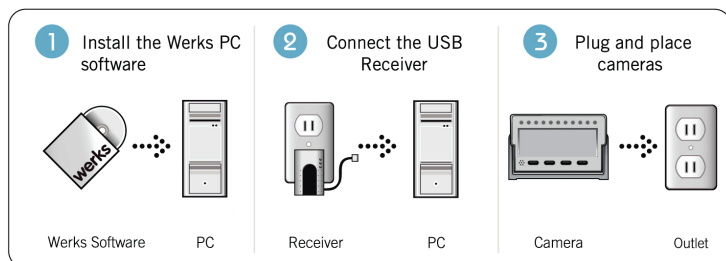
Installation and setup of the Spy Camera is a breeze because all of our cameras are built using Universal Plug and Play (UPnP) and HomePlug Networking – LukWerks automatically finds the camera almost as quickly as you plug it in.



## CAMERA HIGHLIGHTS

- High-quality, color video (VGA or QVGA)
- 400 MHz onboard processor
- Digital motion detection
- Built-in video compression stores more video longer
- Automatically adjusts for changing light conditions
- Lens with glare shield
- Secure video transmission
- Better than wireless – just plug them in

## EASY 3-STEP SETUP



## APPLICATIONS

LukWerks lets you conveniently see and protect what's important to you from anywhere in the world.

- Secure your first or second home
- Monitor your small business
- Keep a safe eye on your children
- Watch your pets while you are away



## Featuring the Werks™ Software

- Turn your PC into a powerful digital video recorder
- Play back video from prior days, weeks, or even months with powerful search and playback controls
- Log in and view live video remotely from anywhere in the world using an Internet-connected PC or Windows Mobile phone
- Monitor live video for up to six cameras
- Receive motion detection email and mobile phone alerts with a text message, image, or video clip
- Save disk space because of motion-triggered recordings

# SPY CAMERA KITS

## SPY CAMERA STARTER KIT



## ADD-ON SPY CAMERA KIT



The Spy Starter Kit has all the components for a professional video security and remote monitoring system.

The Easy Add-on Spy Camera extends the power of your video security system.

The Spy Camera operates with other WiLife cameras, giving you the capability to expand the coverage of your video security system by adding up to five additional cameras (Outdoor, Outdoor IR, Indoor, and Spy) to one system.

### MOUNTING OPTIONS

We make it easy for you to place your camera anywhere inside a home or business. The Spy Camera masquerades as a fully-functional clock that can be placed anywhere on a flat surface that has an unobstructed field of view. It looks natural wherever you place it - night-table, dresser, shelf, desk, countertop, etc.

Adjust the built-in camera's view by tilting the camera up or down.



## DLC-810c SPY CAMERA

Basic	
Processing Power	400 MHz DSP
Image Encoding	Windows® Media Video 9
Image Processing	Motion detection up to 16 zones, Auto brightness
Resolution	Selectable: 640 X 480 or 320 X 240 pixels
Frame Rate	Selectable: 15, 10 or 5 frames/second
Color Depth	10 bits
Firmware Updates	Selectable: Manual or Automatic
Lens	
Focus	Preset
Viewing Angle	80° (diagonal) 50° (manual)

Operating Environment	
Operating Temp. Range	+32° to +93° F (0° C to +34° C)
Storage Temp Range	-4° F to +140° F (-20° C to +60° C)
Humidity (storage and operating)	5% to 95% (relative; non-condensing)
Voltage	120/240 Volts AC, 50/60 Hz
Networking	Ethernet; HomePlug
Illumination	2 lx minimum per IEC 61146-1
Property Size	Up to 8,000 square feet
Physical Metrics	
Power Consumption	15 Watts
Camera Body Dimensions	Height: 4.0" (11 cm); Width 6" (15 cm); Depth: 2" (4.5 cm)
Camera Weight	1 lb (453 g)

## Free Manuals Download Website

<http://myh66.com>

<http://usermanuals.us>

<http://www.somanuals.com>

<http://www.4manuals.cc>

<http://www.manual-lib.com>

<http://www.404manual.com>

<http://www.luxmanual.com>

<http://aubethermostatmanual.com>

Golf course search by state

<http://golfingnear.com>

Email search by domain

<http://emailbydomain.com>

Auto manuals search

<http://auto.somanuals.com>

TV manuals search

<http://tv.somanuals.com>