



TravelNet Internet Only Cellular Router Activation Guide

Activation Instructions For Models TN-2033, and TN-2055:



Verizon TN-2055 Activation:

1. Connect an Ethernet Cable directly to the TravelNet Cellular Router and the Laptop.
2. Enable the Local Area Network, when connected, go to the next step.
3. Open a web browser (Internet Explorer, Firefox, Mozilla, Safari)
4. Enter the IP address: 192.168.1.10



Figure 1



Internet Only

User Name:	<input type="text" value="ctek"/>
Password:	<input type="password" value="ctek"/>

Figure 2

5. Enter the user name 'ctek' and password 'ctek'
6. Click on the [Login](#) button.
7. Click on the [Activation](#) button.

INTERFACES	STATUS	SERVICES	OPTIONS
Wireless	Wireless	Password	Applications
Ethernet	Ethernet	Routing	Tools
RS-232		TCP PAD	
Relay Input		UDP PAD	
Relay Output		Admin Screens	
		Activation	

[Restart](#)

Winegard Website

Figure 3

8. Click on the [Over The Air Activation](#) button.
9. If [Network Stability is OK For Activation](#) (if Not Ok for Activation, wait 3 minutes.) If Not OK for Activation for 15 additional minutes, contact Support.
10. Click the [Activate](#) button.
11. Wait 3 minutes, then check status. If still in progress, wait an additional 3 minutes. If still in progress or 'failed', contact support.
12. When 'Activated' click [Back](#) button
13. Click the [Home](#) button.
14. Go to Interfaces-Wireless and [Wireless Connection:](#) and Select 'Enable' (refer to [figure 11](#))

WINEGARD
TravelNet

Wireless Interface Configuration

Network Select:

Change to Enable

User Name:	<input type="text"/>	Wireless Connection:	<input type="text" value="Disabled"/>
Password:	<input type="text"/>	Inactivity Timeout:	<input type="text" value="Never"/>
<input checked="" type="radio"/> Use network provided dynamic IP address		<input type="radio"/> Use the following static IP address: <input type="text"/>	
Enable LCP echo packets: <input type="checkbox"/>			

Figure 4

15. At the bottom of the page, click the [Update](#) button.
16. Click on the [Home](#) button.
17. Click on the [Restart](#) button and confirm by clicking the [Restart](#) button again, and wait 30 seconds.
18. Click on the [Home](#) button.

19. Click on the Status-[Wireless](#) button, and verify that there is a Current IP address. This may take several minutes depending on the carrier network.

WINEGARD
TravelNet

Wireless Interface Status

ESN - Dec:	09608911949	ESN- Hex:	6087FC4D
System ID:	20	Phone Number (MDN):	0000004685
Network Status:	In Service	Signal Level (RSSI):	-89dBm
Service Type:	1xRTT/EvDO Rev A	Current IP Address:	
Band:	Cellular	Call Status:	Idle
Roam Status:	Not Roaming	Temp Alert:	Temp OK

Home Refresh Details

Figure 5

20. Click on the [Home](#) button.
21. Click on the [Restart](#) button and confirm by clicking the [Restart](#) button again, and wait 30 seconds.
22. Do a restart of all network devices in order, first the TravelNet Router, 2nd the Edimax Router, and finally laptop.



Sprint TN-2033 Activation:

1. Connect an Ethernet Cable directly to the TravelNet Cellular Router and the Laptop.
2. Enable the Local Area Network, when connected, go to the next step.
3. Open a web browser (Internet Explorer, Firefox, Chrome, Mozilla)
4. Enter the IP address: 192.168.1.10

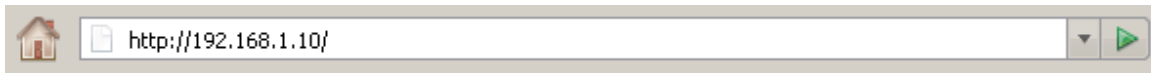


Figure 6



Internet Only

User Name:	<input type="text" value="ctek"/>
Password:	<input type="password" value="••••"/>

Figure 7

5. Enter the user name 'ctek' and password 'ctek'
6. Click the [Log In](#) button.
7. Click on the [Activation](#) button.
8. Click on the [Over the Air Activation](#) button



Wireless Activation Services

Local PRL Update	<input type="button" value="Select"/>
Over The Air PRL Update	<input type="button" value="Select"/>
Over The Air Activation	<input type="button" value="Select"/>
Manual Configuration	<input type="button" value="Select"/>

Figure 8

9. If Network Stability is [Ok for Activation](#) then go to step 10, if Not Ok, then wait 3 minutes. If still Not Ok, call support.



Over The Air Activation

Activation Status: Not Activated	Network Stability: <input type="text" value="OK For Activation"/>
----------------------------------	---

<input type="button" value="Activate"/>	<input type="button" value="Status"/>	<input type="button" value="Details"/>	<input type="button" value="Back"/>
---	---------------------------------------	--	-------------------------------------

Figure 9

10. Click on the [Activate](#) button.
11. Wait 3 minutes, then click the [Status](#) button. If still **in progress**, then wait an additional 3 minutes. If still in progress or 'failed', contact support.
12. When status changes to 'Activated' click the [Back](#) button.
13. Click on the [Home](#) button.
14. Click on the Interfaces-[Wireless](#) button and change the Wireless connection type to 'Enable' (refer to fig. 10)

Figure 10

15. At the bottom of the page, click the [Update](#) button.
16. Ok, then click the [Home](#) button.
17. Click on the [Restart](#) button and confirm by clicking the [Restart](#) button again, and wait 30 seconds.



[Winegard Website](#)

Figure 11

18. Click on the [Home](#) button.
19. Click the Status-[Wireless](#) button, verify that there is a Current IP address.
20. Click on the [Home](#) button.
21. Click on the [Restart](#) button and confirm by clicking the [Restart](#) button again, and wait 30 seconds.
22. Do a hard restart of all network devices in order, first the Cellular Router, 2nd the WiFi Router, and finally laptop.

Setting Up WiFi Security on the Edimax BR-6204WG

Refer to the Edimax users guide CD for additional information.

Once you have an internet connection and an unsecure WiFi connection established proceed to setup WiFi security for your Edimax router.

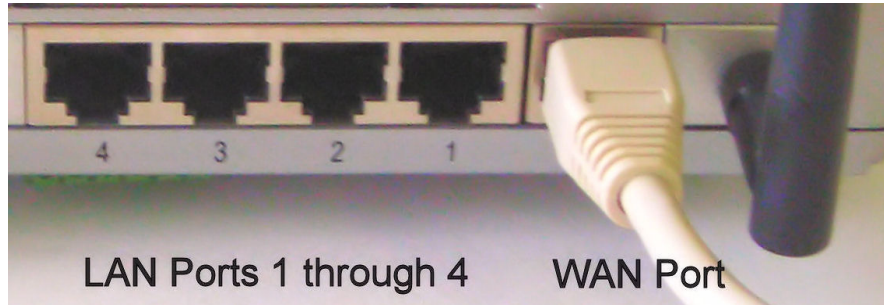


Figure 12

WEP Key Setup

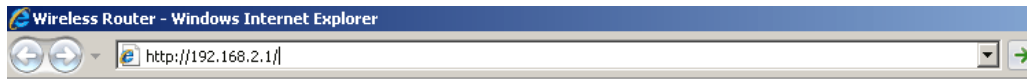


Figure 13

1. Log into the Edimax WiFi Router at 192.168.2.1
2. Enter the Username 'admin' and Password '1234'
3. Go to WIRELESS SETTINGS > SECURITY
4. Encryption type: select **WEP**
5. Key Length: **64-bit**
6. Key Format: **Hex (10 Characters)**
7. Default Tx Key: **Key 1.**
8. Encryption Key 1: Enter your 10 Characters Key- see chart below
9. **Do not place an "x" in the selection box labeled "Enable 802.1x Authentication"** for normal installations. If there are any questions call TravelNet Technical Support.

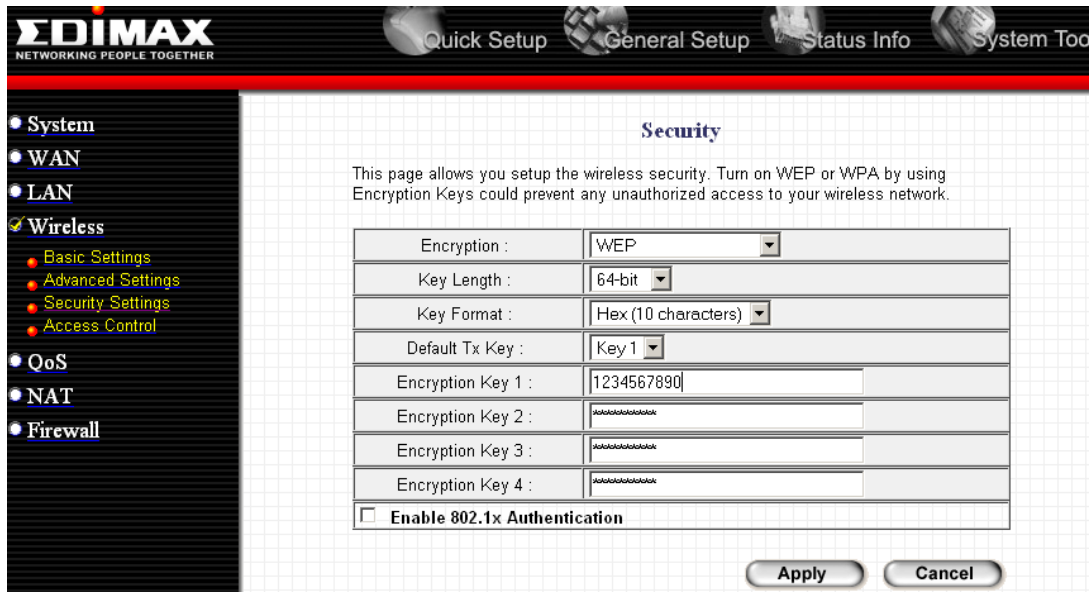


Figure 14

WEP Key Setup

Parameters	Default	Description
Key Length	64-bit	You can select the WEP key length for encryption, 64-bit or 128-bit. Larger WEP key length requires 26 hexadecimal characters.
Key Format		Use hexadecimal digits (in the "A-F", "a-f" and "0-9" range) to be the WEP Key. Examples: Hexadecimal Digits: 12345abcde or abcdef0123

10. Write key on piece of paper or on Edimax manual and keep in a safe place with other important documentation.
11. Click on the Apply Button and wait for the System to automatically Restart. Click OK button and security setup is complete.
12. Call TravelNet Technical Support (877) 475-7771 if there are questions concerning Apple Computers or if you prefer to use other encryption methods.

To connect your XP computer to your wireless network

Configuring the Windows XP Wireless Clients (With WEP)

Configuration of the Windows XP wireless clients for WEP key authentication depends on whether you are using Windows XP with SP2 or Windows XP with SP1 and whether the wireless network adapter driver supports Wireless Auto Configuration.


Wireless Network Adapter Driver Supports Wireless Auto Configuration with Windows XP with SP2

Use the following procedure to configure Windows XP with SP2 for your infrastructure mode wireless network when the wireless network adapter supports Wireless Auto Configuration:

1. When the computer is within range of the wireless router or Access Point (AP) operating in your home or small business, Windows XP should detect it and prompt you with a **Wireless networks detected** message in the notification area of your taskbar.
2. Click the notification message. If you are not notified, right-click the wireless network adapter in Network Connections, then click **View Available Wireless Networks**. In either case, you should see a **Choose a wireless network** dialog box with the name of your wireless network. (If the "TravelNet xxxx" wireless network is not displayed, it may be necessary to reset the unit by removing its power plug for 10 seconds, then reinsert the power plug and wait 45 to 60 seconds). Then select the "View Available Wireless Networks" again.
3. Double-click your wireless network name. Windows XP will attempt to connect to your wireless network.
4. Because Windows XP has not been configured with the WEP key for your wireless network, the connection attempt will fail and Windows XP will prompt you with a **Wireless Network Connection** dialog box. Type the WEP key in **Network key** and **Confirm network key**, and then click **Connect**.
5. If the status message for your wireless network in the **Choose a wireless network** dialog box is **Connected**, you are done. If the status message for your wireless network in the **Choose a wireless network** dialog box is **Authentication did not succeed**, click **Change the order of preferred networks** in the list of **Related tasks**. From the **Wireless Networks** tab of properties of your wireless network adapter, click the name of your wireless network in **Preferred networks**, and then click **Properties**.
6. In **Network Authentication**, click **WEP**.
7. In **Network key**, type the WEP key as configured on the wireless Access Point (AP). In **Confirm network key**, retype the WEP key.
8. Click **OK** to save changes to the wireless network.
9. Click **OK** to save changes to the wireless network adapt


To connect your Windows Vista computer to your wireless network

View and connect to available wireless networks

 Applies to all editions of Windows Vista.

If you have a mobile PC, you can see a list of available wireless networks, and then connect to one of those networks, no matter where you are. The wireless networks appear

only if your computer has a wireless network adapter installed and the adapter is turned on.

1. Open Connect to a Network by clicking the **Start** button , and then clicking **Connect to**.
2. In the **Show** list, click **Wireless**.


You'll see a list of the wireless networks currently available. If you do not see a network listing similar to this example: TravelNet 1234, it may be necessary to reset power on the WiFi router, wait 45 to 60 seconds and refresh the "View Available Wireless Networks".

3. Highlight your wireless network choice, then click **Connect**.

If you don't see the network you want to connect to, click **Set up a connection or network**. A list of options will appear that includes manually searching for and connecting to a network, as well as creating a new network connection.

Some networks require a network security key or passphrase. To connect to one of those networks, ask the network administrator or the service provider for the key or passphrase.

Enter WEP encryption key in same manner as described on previous page for Windows XP

 Whenever possible, you should connect to security-enabled wireless networks. If you do connect to a network that is not secure, be aware that someone with the right tools can see everything that you do, including the websites you visit, the documents you work on, and the user names and passwords that you use.

After you're connected, you can close the **Wireless Network Connection** window. Now you're ready to browse the Web wirelessly. You can also create a wireless network in your home, RV or boat that connects your computers, printers, cameras, games, and other accessories for easy access and enjoyment.

QUESTIONS? CALL OUR SUPPORT LINE: 877-475-7771 or visit our website FAQ at <http://www.winegard.com>

TravelNet
Winegard Company

Ver. 1.5
4/21/2009

- 9 -

Support: (877) 475-7771
FAX: 847-991-3328
FAX: 847-991-3328

**For Winegard TravelNet Internet Only Models
(TN-2033, TN-2055, TN-2099)**

**WINEGARD MOBILE PRODUCTS LIMITED WARRANTY
(2 YEARS PARTS)**

Winegard Company warrants this product against defects in materials or workmanship for a period of two (2) years from the date of original purchase. No warranty claim will be honored unless at the time the claim is made, Customer presents proof of purchase to an authorized Winegard dealer (to locate the nearest authorized Winegard dealer, contact Winegard Company, 3000 Kirkwood Street, Burlington, Iowa 52601, Telephone 800-288-8094 or visit www.winegard.com). Customer must provide proof of purchase with a dated sales receipt for the Winegard product to verify the product is under warranty. If the date of purchase cannot be verified, the warranty period shall be considered to begin thirty (30) days after the date of manufacture.

If a defect in material or workmanship is discovered, Customer may take the product to an authorized Winegard dealer for service. Customer must provide proof of purchase to verify the product is under warranty.

Alternatively, Customer may ship the product prepaid to Winegard Technical Services (located at 3111 Kirkwood Street, Burlington, Iowa 52601, Telephone 800-788-4417). Customer must return the product along with a brief description of the problem and provide Winegard Technical Services with Customer's name, address, and phone number. Customer must also provide proof of purchase to verify the product is under warranty. If the product is returned before the expiration of the warranty period, Winegard Company will (at its option) either repair or replace the product.

This Limited Warranty does not apply if the product has been damaged, deteriorates, malfunctions or fails from: improper installation, misuse, abuse, neglect, accident, tampering, modification of the product as originally manufactured by Winegard in any manner whatsoever, removing or defacing any serial number, usage not in accordance with product instructions or acts of nature such as damage caused by wind, lightning, ice or corrosive environments such as salt spray and acid rain.

RETURN AUTHORIZATION POLICY

A Return Material Authorization (RMA) is required prior to returning any product to Winegard Company or Winegard Warranty Services under this warranty policy. Please call our Technical Services Department at 800-788-4417 or send an e-mail to warranty@winegard.com to obtain the RMA number. Please furnish the date of purchase when requesting an RMA number. Enclose the product in a prepaid package and write the RMA number in large, clear letters on the outside of the package. To avoid confusion or misunderstanding, a shipment(s) without an RMA number(s) or an unauthorized return(s) will be refused and returned to Customer freight collect.

WINEGARD COMPANY DOES NOT ASSUME ANY LIABILITIES FOR ANY OTHER WARRANTIES, EXPRESS OR IMPLIED, MADE BY ANY OTHER PERSON.

ALL OTHER WARRANTIES WHETHER EXPRESS, IMPLIED OR STATUTORY INCLUDING WARRANTIES OF FITNESS FOR A PARTICULAR PURPOSE AND MERCHANTABILITY ARE LIMITED TO THE TWO YEAR PERIOD OF THIS WARRANTY.

In states that do not allow limitations on implied warranties, or the exclusion or limitation of incidental or consequential damages, the above limitations or exclusions do not apply.

Some states do not allow limitations on how long an implied warranty lasts, or the exclusion of limitation of incidental or consequential damages, so the above limitations or exclusions may not apply to you.

This warranty gives Customer specific legal rights. Customer may also have other rights that may vary from state to state.

**For Winegard TravelNet Internet and Phone Models
(TN-2301, TN-2303, TN-2305, TN-2307)**

**WINEGARD MOBILE PRODUCTS LIMITED WARRANTY
(1 YEAR PARTS)**

Winegard Company warrants this product against defects in materials or workmanship for a period of one (1) year from the date of original purchase. No warranty claim will be honored unless at the time the claim is made, Customer presents proof of purchase to an authorized Winegard dealer (to locate the nearest authorized Winegard dealer, contact Winegard Company, 3000 Kirkwood Street, Burlington, Iowa 52601, Telephone 800-288-8094 or visit www.winegard.com). Customer must provide proof of purchase with a dated sales receipt for the Winegard product to verify the product is under warranty. If the date of purchase cannot be verified, the warranty period shall be considered to begin thirty (30) days after the date of manufacture.

If a defect in material or workmanship is discovered, Customer may take the product to an authorized Winegard dealer for service. Customer must provide proof of purchase to verify the product is under warranty.

Alternatively, Customer may ship the product prepaid to Winegard Technical Services (located at 3111 Kirkwood Street, Burlington, Iowa 52601, Telephone 800-788-4417). Customer must return the product along with a brief description of the problem and provide Winegard Technical Services with Customer's name, address, and phone number. Customer must also provide proof of purchase to verify the product is under warranty. If the product is returned before the expiration of the warranty period, Winegard Company will (at its option) either repair or replace the product.

This Limited Warranty does not apply if the product has been damaged, deteriorates, malfunctions or fails from: improper installation, misuse, abuse, neglect, accident, tampering, modification of the product as originally manufactured by Winegard in any manner whatsoever,

removing or defacing any serial number, usage not in accordance with product instructions or acts of nature such as damage caused by wind, lightning, ice or corrosive environments such as salt spray and acid rain.

RETURN AUTHORIZATION POLICY

A Return Material Authorization (RMA) is required prior to returning any product to Winegard Company or Winegard Warranty Services under this warranty policy. Please call our Technical Services Department at 800-788-4417 or send an e-mail to warranty@winegard.com to obtain the RMA number. Please furnish the date of purchase when requesting an RMA number. Enclose the product in a prepaid package and write the RMA number in large, clear letters on the outside of the package. To avoid confusion or misunderstanding, a shipment(s) without an RMA number(s) or an unauthorized return(s) will be refused and returned to Customer freight collect.

WINEGARD COMPANY DOES NOT ASSUME ANY LIABILITIES FOR ANY OTHER WARRANTIES, EXPRESS OR IMPLIED, MADE BY ANY OTHER PERSON.

ALL OTHER WARRANTIES WHETHER EXPRESS, IMPLIED OR STATUTORY INCLUDING WARRANTIES OF FITNESS FOR A PARTICULAR PURPOSE AND MERCHANTABILITY ARE LIMITED TO THE ONE YEAR PERIOD OF THIS WARRANTY.

In states that do not allow limitations on implied warranties, or the exclusion or limitation of incidental or consequential damages, the above limitations or exclusions do not apply.

Some states do not allow limitations on how long an implied warranty lasts, or the exclusion of limitation of incidental or consequential damages, so the above limitations or exclusions may not apply to you.

This warranty gives Customer specific legal rights. Customer may also have other rights that may vary from state to state.

Free Manuals Download Website

<http://myh66.com>

<http://usermanuals.us>

<http://www.somanuals.com>

<http://www.4manuals.cc>

<http://www.manual-lib.com>

<http://www.404manual.com>

<http://www.luxmanual.com>

<http://aubethermostatmanual.com>

Golf course search by state

<http://golfingnear.com>

Email search by domain

<http://emailbydomain.com>

Auto manuals search

<http://auto.somanuals.com>

TV manuals search

<http://tv.somanuals.com>