



## DOUBLE SECTION DELUXE FEATURED ELECTRIC CONVECTION OVEN

**WOLF RANGE COMPANY**



### BASIC MODEL:

**WKEC2** Double section electric convection oven

### KEY FEATURES:

- Stainless steel front, sides, top and legs.
- Independently operated stainless steel doors with windows open a full 180°.
- 25 total KW.
- ½ H.P. two speed oven blower-motor.
- Moisture vent damper control.
- Computer controls with digital time and temperature read-out.
- 'Roast & Hold' cycle.
- Shelf I.D.
- 24 hour timers with audible alarm.
- Oven cool switch for rapid cool down.
- Porcelain enamel on steel oven interiors.
- Five nickel plated oven racks with eleven rack positions per section.
- One year limited parts and labor warranty.

### OPTIONAL FEATURES:

- Painted rear motor enclosure.
- Stainless steel rear motor enclosure.
- Casters.
- Flanged feet.
- 480V/60 Hz/1 or 3 phase.

### DESCRIPTION:

Double section electric convection oven, Wolf Model No. WKEC2. Stainless steel front, sides, top and legs. Independently operated stainless steel doors with windows open a full 180°. Non-sag insulation applied to the top, rear, sides, bottom and doors. Porcelain enamel on steel oven interiors measure 29"w x 22½"d x 20"h. Two interior oven lights per section. Five nickel plated oven racks per section measure 28¼" x 20½". Eleven position nickel plated rack guides with positive rack stops per section. Each section heated by electric solid sheath elements rated at 12 KW. Furnished with a two speed ½ H.P. oven blower-motor per section. Computer controls with digital time and temperature read-out. 'Roast & Hold' cycle. Shelf I.D. 24 hour timers with audible alarm. Oven cool switch for rapid cool down. 208 or 240 volt, 60 Hz, 1 or 3 phase.

Exterior dimensions: 40"w x 41½"d x 70"h on 8" legs. Depth measurement includes door handles.



Approved by \_\_\_\_\_

Date: \_\_\_\_\_

*UL and NSF listed. UL listed to Canadian safety standards.*

**SPECIFY VOLTAGE AND PHASE WHEN ORDERING.**

# WOLF RANGE COMPANY

Wolf Range Company, LLC  
19600 S. Alameda St., Compton, CA 90221-6291  
P.O. Box 7050, Compton, CA 90240-7050  
(310) 637-3737 • FAX (310) 637-7931 • (800) 366-WOLF  
Customer Service (888) 639-9653 • [www.WOLFRANGE.com](http://www.WOLFRANGE.com)

**MODEL: WKEC2 Electric Convection Oven**



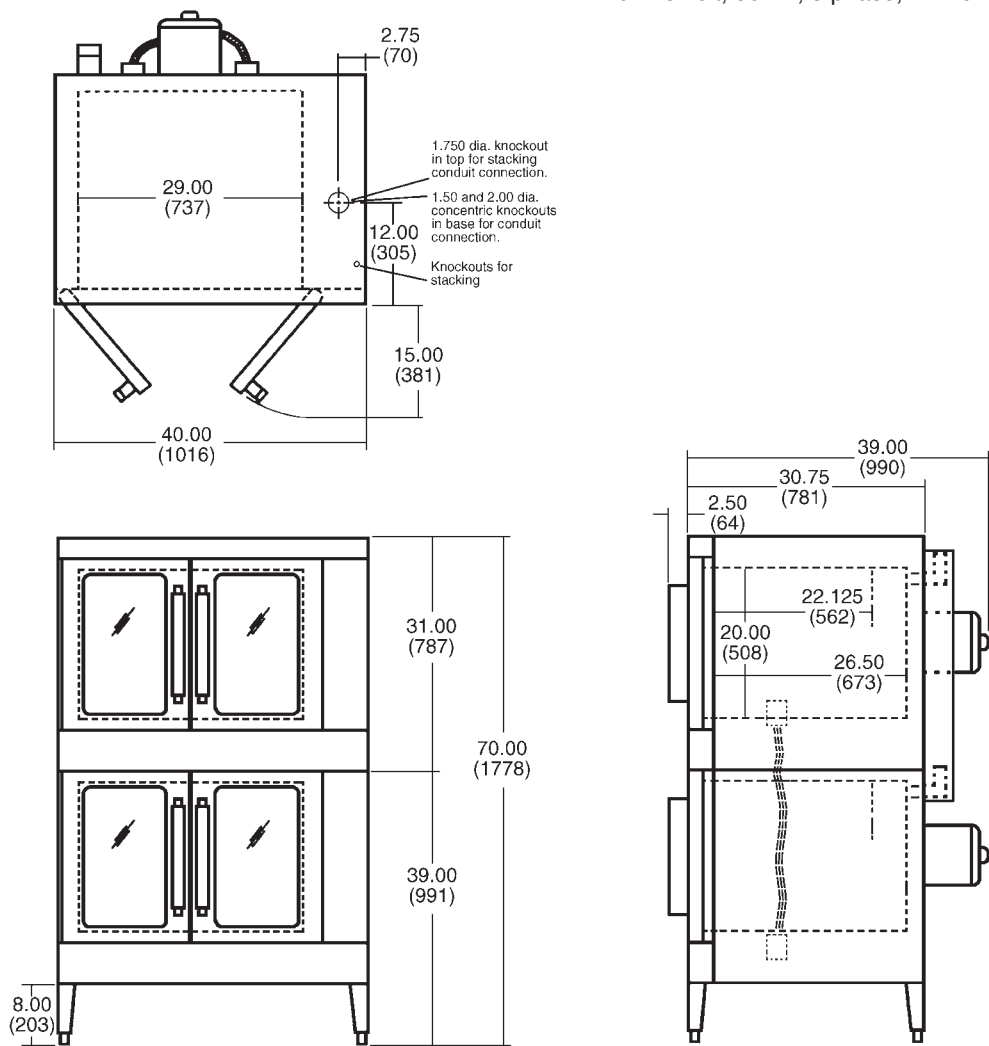
# Model WKEC2 Double Section Deluxe Featured Electric Convection Oven

### ACCESSORIES:

- Extra oven rack(s).
- Stainless steel drip pan.

### OPTIONAL VOLTAGES:

- 480 volt, 60 Hz, 3 phase.
- 220/380 volt, 50 Hz, 1 phase, 3 wire.
- 220/380 volt, 50 Hz, 3 phase, 4 wire.
- 240/415 volt, 50 Hz, 3 phase, 4 wire.



MODEL NO.	TOTAL CONN. KW	NOMINAL AMPS PER LINE WIRE													
		3 PHASE LOAD KW PER PHASE			3 PHASE									1 PHASE	
					208 VOLT			240 VOLT			480 VOLT				
		X-Y	Y-Z	X-Z	X	Y	Z	X	Y	Z	X	Y	Z	208V	240V
WKEC2	25	8	8	9	70	66	70	66	58	66	28	30	30	120	104

**NOTE:** In line with its policy to continually improve its product, Wolf Range Company reserves the right to change materials and specifications without notice.  
 This appliance is manufactured for commercial use only and is not intended for home use.

## Free Manuals Download Website

<http://myh66.com>

<http://usermanuals.us>

<http://www.somanuals.com>

<http://www.4manuals.cc>

<http://www.manual-lib.com>

<http://www.404manual.com>

<http://www.luxmanual.com>

<http://aubethermostatmanual.com>

Golf course search by state

<http://golfingnear.com>

Email search by domain

<http://emailbydomain.com>

Auto manuals search

<http://auto.somanuals.com>

TV manuals search

<http://tv.somanuals.com>