

## DOUBLE SECTION FULL FEATURED ELECTRIC CONVECTION OVEN

**WOLF RANGE COMPANY**



### BASIC MODEL:

**WKED2** Double section electric convection oven

### KEY FEATURES:

- ▶ Stainless steel front, sides, top and legs.
- ▶ Independently operated stainless steel doors with double pane windows.
- ▶ 25 total KW.
- ▶ 1/2 H.P. two speed oven blower-motor.
- ▶ Moisture vent damper control.
- ▶ Side mounted solid state temperature controls adjust from 150° to 500°F.
- ▶ 60 minute timers with audible alarm.
- ▶ Oven cool switch for rapid cool down.
- ▶ Porcelain enamel on steel oven interiors.
- ▶ Five nickel plated oven racks with eleven rack positions per section.
- ▶ One year limited parts and labor warranty.

### OPTIONAL FEATURES:

- ▷ Five hour timer in place of 60 minute timer.
- ▷ Casters.
- ▷ 480 volt, 60 Hz, 3 phase.
- ▷ 220/380 volt, 50 Hz, 1 phase, 3 wire.
- ▷ 220/380 volt, 50 Hz, 3 phase, 4 wire.
- ▷ 240/415 volt, 50 Hz, 3 phase, 4 wire.

### ACCESSORIES:

- ▷ Extra oven rack(s).
- ▷ Stainless steel drip pan.

### DESCRIPTION:

Double section electric convection oven, Wolf Model No. WKED2. Stainless steel front, sides, top and legs. Independently operated stainless steel doors with double pane windows. Non-sag insulation applied to the top, rear, sides, bottom and doors. Porcelain enamel on steel oven interiors measure 29" w x 22 1/8" d x 20" h. Two interior oven lights per section. Five nickel plated oven racks per section measure 28 1/4" x 20 1/2". Eleven position nickel plated rack guides with positive rack stops per section. Each section heated by electric solid sheath elements rated at 12.5 KW. Furnished with a two speed 1/2 H.P. oven blower-motor per section. Side mounted solid state temperature controls adjust from 150° to 500°F. 60 minute timers with audible alarm. Oven cool switch for rapid cool down. 208 or 240 volt, 60 Hz, 1 or 3 phase.

Exterior dimensions: 40" w x 42 1/4" d x 70" h on 8" legs. Depth measurement includes door handles.



Approved by \_\_\_\_\_

Date: \_\_\_\_\_

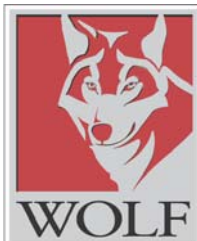
NSF listed. UL listed. UL listed to Canadian safety standards.

**SPECIFY VOLTAGE AND PHASE WHEN ORDERING.**

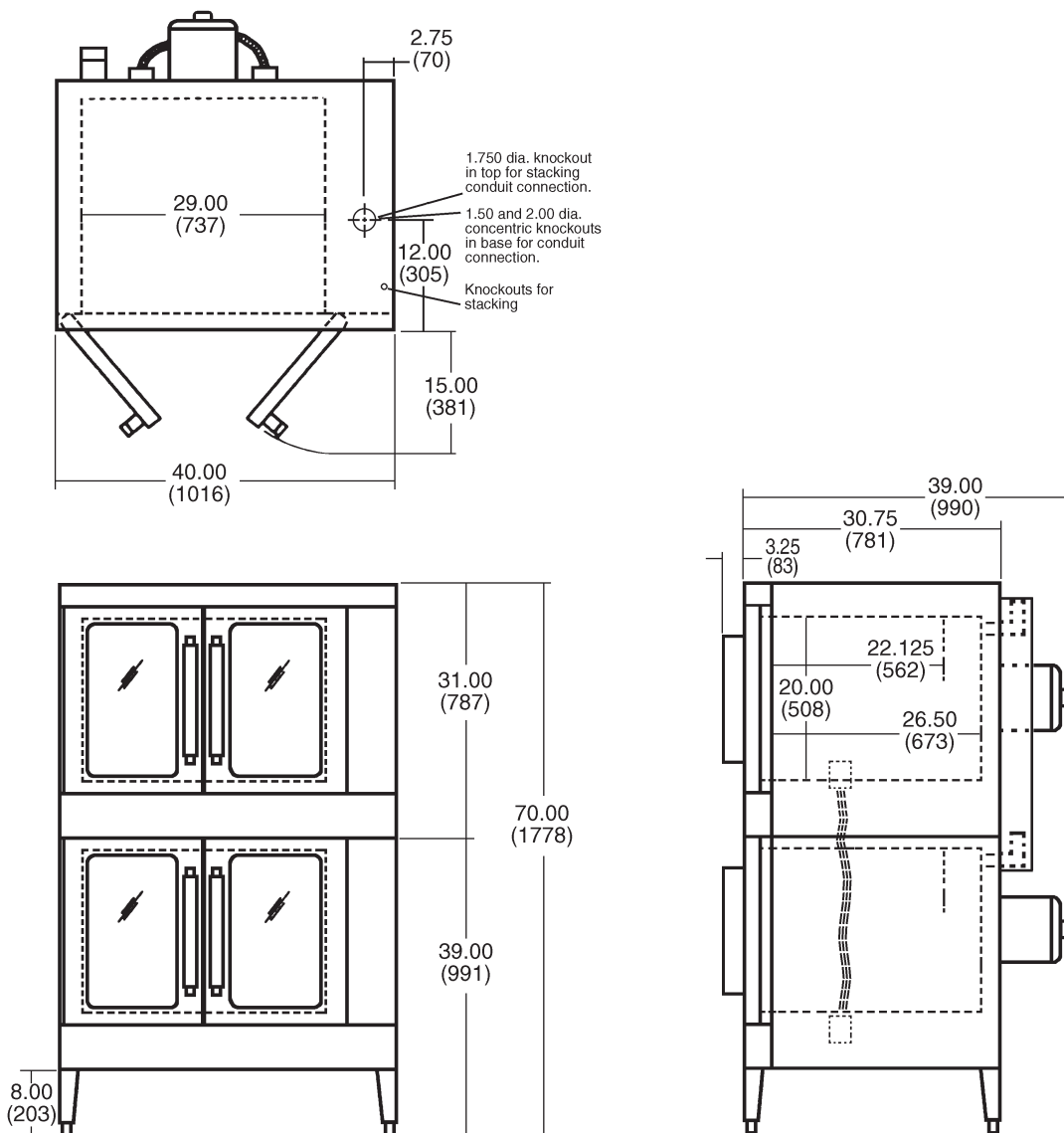
# WOLF RANGE COMPANY

Wolf Range Company  
Division of ITW Food Equipment Group LLC  
(800) 366-9653  
[www.wolfrange.com](http://www.wolfrange.com)

**MODEL: WKED2 Electric Convection Oven**



## Model WKED2 Double Section Full Featured Electric Convection Oven



MODEL NO.	TOTAL CONN. KW	3 PHASE LOAD KW PER PHASE			NOMINAL AMPS PER LINE WIRE										
					3 PHASE									1 PHASE	
					208 VOLT			240 VOLT			480 VOLT				
					X-Y	Y-Z	X-Z	X	Y	Z	X	Y	Z	X	Y
WKED2	25	8	8	9	70	66	70	66	58	66	28	30	30	120	104

**NOTE: In line with its policy to continually improve its product, Wolf Range Company reserves the right to change materials and specifications without notice. This appliance is manufactured for commercial use only and is not intended for home use.**

## Free Manuals Download Website

<http://myh66.com>

<http://usermanuals.us>

<http://www.somanuals.com>

<http://www.4manuals.cc>

<http://www.manual-lib.com>

<http://www.404manual.com>

<http://www.luxmanual.com>

<http://aubethermostatmanual.com>

Golf course search by state

<http://golfingnear.com>

Email search by domain

<http://emailbydomain.com>

Auto manuals search

<http://auto.somanuals.com>

TV manuals search

<http://tv.somanuals.com>