



Model M1040 & M1041 Plate Shear Instruction Sheet

Inventory

| | |
|---------------------------------------|---|
| Plate Shear Assembly | 1 |
| Hex Bolts M10-1.5 X 40 (M1040) | 2 |
| Hex Bolts M12-1.75 X 40 (M1041) | 2 |
| Flat Washers 10mm (M1040) | 2 |
| Flat Washers 12mm (M1041) | 2 |
| Handle | 1 |

Shearing Dimensions (Mild Steel)

| | |
|---|---------------------|
| Maximum Shear Thickness | 7 gauge ($3/16"$) |
| Maximum Rod Diameter (Rebar/All Thread) | $1/2"$ |

Note: DO NOT attempt to shear hardened or stainless steel. You will damage or break your shear blades!

Assembly and Mounting

To assemble and mount your shear, do these steps:

1. Secure the handle to the plate shear assembly using the included hex bolts and flat washers, as shown in the parts diagram on the next page.
2. Place the shear on the workbench, and use the holes in the base as a guide for drilling and attaching the shear to the workbench.
3. We recommend using through bolts (hex bolts that go through the workbench and are secured from the other side with flat washers and hex nuts) if possible. If it is not possible to use through bolts, use lag screws with flat washers and fasten the lag screws directly into the workbench.

Basic Operation

To perform basic shearing operations, do these steps:

1. Raise the threaded stop if needed to allow room for the workpiece.
2. Turn the stop so the stop pad is firmly pressing the workpiece against the lower blade.
3. With slow and even pressure, pull the handle down to cut the workpiece.



Figure 1. Model M1040 and M1041 Plate Shears.

⚠ WARNING

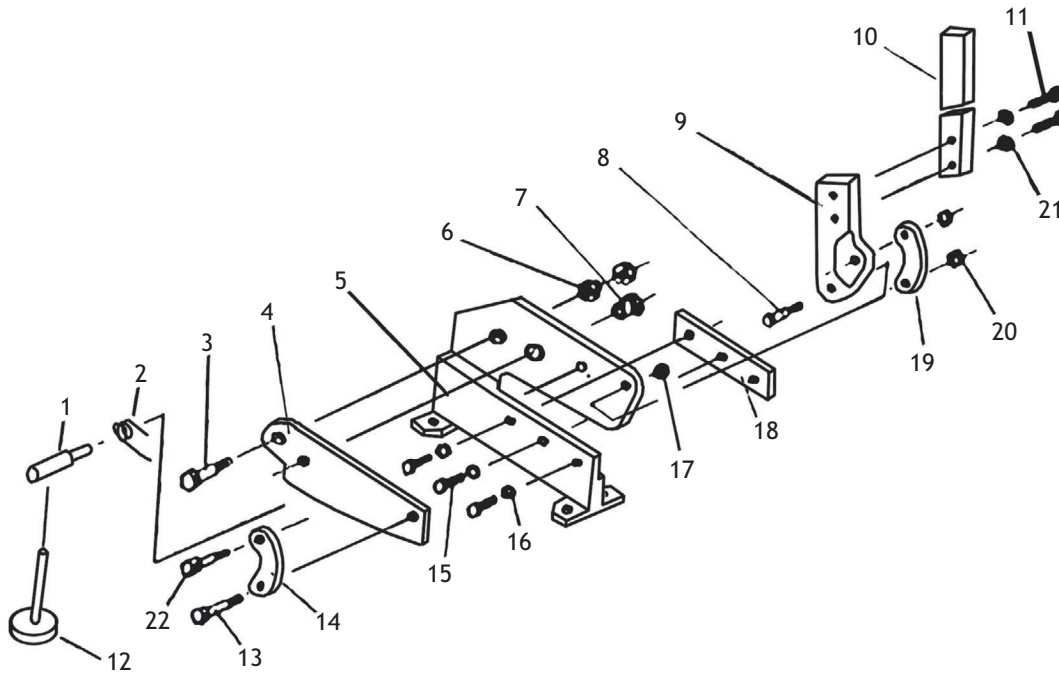
The shear blades are very sharp! Keep body parts away from the cutting area, or serious injury may result!

Note: If the material seems too thick or too hard, do not force the shear! Instead, use a metal-cutting bandsaw to cut the workpiece.

Maintenance

- Always keep blades lubricated with a light oil.
- Keep pivot points tight.
- Check mounting fasteners and all shear hardware before every use for loose or worn components.

M1040-41 Parts Breakdown



M1040 Parts List

M1041 Parts List

| REF | PART # | DESCRIPTION |
|-----|-----------|-------------------------------|
| 1 | XM1040001 | SPRING SUPPORT ROD |
| 2 | XM1040002 | TORSION SPRING |
| 3 | XM1040003 | SPECIAL HEX BOLT M14-1.5 X 40 |
| 4 | XM1040004 | UPPER BLADE 8" |
| 5 | XM1040005 | SHEAR BODY (M1040) |
| 6 | XPN42M | HEX NUT M14-1.5 |
| 7 | XM1040007 | BLADE FIXING PIN |
| 8 | XM1040008 | SPECIAL HEX BOLT M10-1.5 X 50 |
| 9 | XM1040009 | HANDLE MOUNTING PLATE |
| 10 | XM1040010 | HANDLE |
| 11 | XPB31M | HEX BOLT M10-1.5 X 40 |
| 12 | XM1040012 | THREADED STOP M12-1.75 X 165 |
| 13 | XM1040013 | SPECIAL HEX BOLT M8-1.25 X 40 |
| 14 | XM1040014 | PIVOT ARM |
| 15 | XPB74M | HEX BOLT M10-1.5 X 20 |
| 16 | XPW04M | FLAT WASHER 10MM |
| 17 | XPN02M | HEX NUT M10-1.5 |
| 18 | XM1040018 | LOWER BLADE 8" |
| 19 | XM1040019 | PIVOT ARM |
| 20 | XPN03M | HEX NUT M8-1.25 |
| 21 | XPW04M | FLAT WASHER 10MM |
| 22 | XM1040022 | THREADED ROD M8-1.25 x 40 |

| REF | PART # | DESCRIPTION |
|-----|-----------|-------------------------------|
| 1 | XM1041001 | SPRING SUPPORT ROD |
| 2 | XM1041002 | TORSION SPRING |
| 3 | XM1041003 | SPECIAL HEX BOLT M18-1.5 X 50 |
| 4 | XM1041004 | UPPER BLADE 12" |
| 5 | XM1041005 | SHEAR BODY (M1041) |
| 6 | XPN15M | HEX NUT M18-1.5 |
| 7 | XM1041007 | BLADE FIXING PIN |
| 8 | XM1041008 | SPECIAL HEX BOLT M14-1.5 X 60 |
| 9 | XM1041009 | HANDLE MOUNTING PLATE |
| 10 | XM1041010 | HANDLE |
| 11 | XPB35M | HEX BOLT M12-1.75 X 40 |
| 12 | XM1041012 | THREADED STOP M12-1.75 X 165 |
| 13 | XM1041013 | SPECIAL HEX BOLT M14-1.5 X 60 |
| 14 | XM1041014 | PIVOT ARM |
| 15 | XPB49M | HEX BOLT M12-1.75 X 20 |
| 16 | XPW06M | FLAT WASHER 12MM |
| 17 | XPN42M | HEX NUT M14-1.5 |
| 18 | XM1041018 | LOWER BLADE 12" |
| 19 | XM1041019 | PIVOT ARM |
| 20 | XPN42M | HEX NUT M14-1.5 |
| 21 | XPW06M | FLAT WASHER 12MM |
| 22 | XM1041022 | THREADED ROD M14-1.5 X 60 |

COPYRIGHT © MAY, 2006 BY WOODSTOCK INTERNATIONAL, INC.

WARNING: NO PORTION OF THIS MANUAL MAY BE REPRODUCED IN ANY SHAPE OR FORM WITHOUT

#8237JK

THE WRITTEN APPROVAL OF WOODSTOCK INTERNATIONAL, INC.

Printed in China

Free Manuals Download Website

<http://myh66.com>

<http://usermanuals.us>

<http://www.somanuals.com>

<http://www.4manuals.cc>

<http://www.manual-lib.com>

<http://www.404manual.com>

<http://www.luxmanual.com>

<http://aubethermostatmanual.com>

Golf course search by state

<http://golfingnear.com>

Email search by domain

<http://emailbydomain.com>

Auto manuals search

<http://auto.somanuals.com>

TV manuals search

<http://tv.somanuals.com>