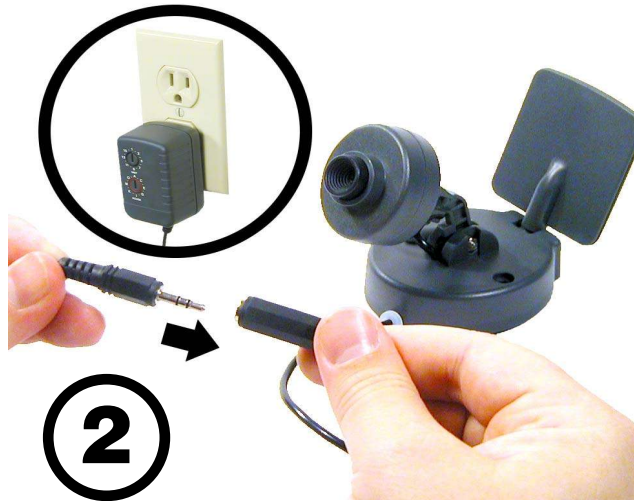


Quick Start

Your camera is ready to go out of the box! All you have to do is:



You can get more help with your XCam2 Wireless Camera on the X10 web site:

<http://www.x10.com/support>

GUIDE:
IN58A



Copyright 2002 X10 Wireless Technology, Inc. All rights reserved.

Set the camera up near your TV for immediate results!

Free Manuals Download Website

<http://myh66.com>

<http://usermanuals.us>

<http://www.somanuals.com>

<http://www.4manuals.cc>

<http://www.manual-lib.com>

<http://www.404manual.com>

<http://www.luxmanual.com>

<http://aubethermostatmanual.com>

Golf course search by state

<http://golfingnear.com>

Email search by domain

<http://emailbydomain.com>

Auto manuals search

<http://auto.somanuals.com>

TV manuals search

<http://tv.somanuals.com>