



Competitive Comparison

Xerox WorkCentre® C2424 vs. HP Color LaserJet 2820/2840AiO

The WorkCentre C2424 is a true workgroup MFP – without compromise.

- Superior performance
- Better print quality and more consistent color
- True concurrency
- More paper capacity
- Legendary solid ink ease-of-use
- Automatic two-sided printing, copying and scanning
- Better productivity features
- Xerox Total Satisfaction Guarantee





| PRINTER FEATURES | WorkCentre C2424 | HP LaserJet 2820 / 2840 |
|--|--|--|
| Faster print speed • Greater productivity and ability to support larger workgroups | Up to 24 ppm color / black | Up to 4 ppm color Up to 20 ppm black |
| Faster first-page-out time¹ • Less waiting so you can meet those fast-approaching deadlines | As fast as 6 seconds color / black | As fast as 35 seconds color As fast as 24 seconds black |
| Automatic two-sided printing • Save time and money...and a lot of effort | Standard with print, copy and scan functions | Not available with print, copy, and scan functions (manual only) |
| Better media handling • Get more flexibility and creative freedom with your choice of heavier media types | Tray 1 (MPT) 60 to 220 gsm Main tray: 60 to 120 gsm | MPT: 60 to 177 gsm (non-HP papers) Up to 220 gsm (HP papers only) Main tray: 60 to 105 gsm |
| Larger media capacity • Over 4-times the maximum paper input capacity for fewer interventions and the ability to load different media types in separate trays | Standard input: 625 sheets Maximum input: 1,675 sheets Up to 4 media trays | Standard input: 125/375 sheets Maximum input: 375 sheets Up to 2 media trays |
| Superior print quality and more consistent color • Solid ink technology lends itself to incredibly smooth and consistent color and print quality. Details and registration are amazingly accurate. Color control is an intuitive snap with its automatic TekColor® corrections | Vibrant finish Consistent color | Flat finish Exhibits banding and poor transfer |
| Better language support • Genuine Adobe®PostScript®3™ for truer, more accurate printing | Adobe PostScript 3, PCL 5c emulation, direct PDF printing | PostScript 3 emulation, PCL 6 |
| COPY FEATURES | | |
| Faster ADF¹ (Automatic Document Feeder) • Spend less time waiting for your copies – in both color and black-and-white | 15 ppm color 15 ppm black | 4 ppm color 2 ppm black |
| Dual-side ADF¹ • Automatic two-sided copying saves time and boosts productivity while lowering costs | Up to 9 sheets per minute in color/black (18 ppm effective throughput) | Not available: single-side copying only |
| Simple and intuitive control panel • Spend less time learning and more time being productive | Large 6-line LCD display Indicator lights for status | Small 2-line display No indicator lights |
| Standard and advanced copy features • The C2424 offers greater flexibility with powerful features that are often found only in high-end copiers • The HP 2800 series lacks many of the advanced features found in high-end copiers | Original Type: (Text, Graphics, Mix, Photo); Reduce/Enlarge; Lighten/Darken; Color/Black; Output quality: (Fast, Standard, Enhanced, Photo) ;Simplex/Duplex: (2-1, 2-2, 1-2, 1-1); Edge erase; Image shift; N-up; Booklet; Posters; Gutter erase; Password protect color copy access; Color balance; Cover Pages; Auto Cropping; Background Mask | Original Type: (Draft, Text, Mixed); Reduce/Enlarge; Lighten/Darken; Color/Black; Simplex: (1-2, 1-1); N-up: (2 up, 4 up) |
| More versatile copying • With the WorkCentre C2424 there is no need to worry about what tray is used for copying legal-size originals | Flat Bed and ADF: up to legal-size | Flat Bed: up to letter-size only Requires ADF for legal-size originals |

1. Times based on WorkCentre C2424 and HP 2840 testing. (Mixed graphics and text documents. Default quality mode)

(see over)



Competitive Comparison

| SCANNER FEATURES | WorkCentre C2424 | HP LaserJet 2820 / 2840 |
|---|--|---|
| Faster Automatic Document Feeder (ADF) scanner¹ <ul style="list-style-type: none"> The WorkCentre C2424 works fast – whether you need color or black-and-white | Color: 19 ppm Black: 19 ppm  | Color: 2 ppm Black: 5 ppm |
| More scanning features <ul style="list-style-type: none"> Powerful scan features are abundant with the WorkCentre C2424 Unlike the 2800 series, you can scan a file to the WorkCentre C2424 device's hard drive and reprint it at a later time | Scan to: public folder, private folder, desktop application, and PC Original types: same as copy Resolutions (ADF or flatbed): 100, 200, 300, 400, 600 dpi Simplex/Duplex file types: BMP, GIF, JPEG, TIFF, PDF Auto Cropping Background Mask | Scan to PC folder or e-mail only Original types: same as copy Resolutions: 300 dpi from ADF, up to 1200 dpi from flatbed Simplex file types: BMP, GIF, JPEG, TIFF, PDF |
| Dual-scan head ADF¹ <ul style="list-style-type: none"> Unlike HP, the WorkCentre C2424 can automatically scan both sides of a document | Up to 11 sheets per minute in color / black (22 PPM effective throughput) | Not available: single-side scanning only |
| SYSTEM FEATURES (This is an indicator of how well the product will perform multiple tasks at once) | | |
| Faster processor | 500MHz | 264MHz |
| More memory <ul style="list-style-type: none"> Over two-times the standard memory and four-times the maximum memory means the WorkCentre C2424 can handle more complex tasks quicker and more reliably | 256 MB (DN), 512MB (DP/DX) standard 1 GB maximum  | 96 MB standard 244 MB maximum |
| Hard drive | 40 GB standard | Hard drive not available |
| True multi-tasking <ul style="list-style-type: none"> With the HP 2800 series, print jobs must be cancelled in order to copy or scan. With the WorkCentre C2424, you can scan or copy while it is printing documents | Print and scan concurrently Copy and queue print jobs concurrently Retrieve scan jobs while printing, copying and / or scanning new jobs concurrently | Unable to print and scan jobs concurrently Unable to copy and queue print jobs concurrently Unable to retrieve scan jobs while printing, copying and / or scanning new jobs |
| Better device management <ul style="list-style-type: none"> Xerox offers automated self-help tools that are powerful yet effective – reducing support requests to the help desk If your WorkCentre C2424 needs attention, it will provide detailed, and graphical on-screen alerts on what to do – or connect you to the same extensive Knowledge Base that Xerox technicians use | PrintingScout on-screen alerts PhaserSMART on-line trouble shooting Job Accounting and Usage Analysis Tool Email alerts on supplies status Configuration SIM for hot swapping configuration settings between devices | HP Toolbox provides simple alert functionality Note: Lab results indicate that it is not consistent |
| Easy driver and software installation¹ <ul style="list-style-type: none"> With the WorkCentre C2424, installation is only five mouse clicks away With the HP 2800 series, there are numerous steps – reducing productivity | 1 minute and 40 seconds using “Walkup Technology” a Xerox exclusive Initial install consisted of 5 driver decision screens | 22 minutes and 40 seconds + 1 call to help desk to turn off computer protection +1 reboot Initial install consisted of 20 unpack screens plus 13 driver decision screens |
| Easy driver software removal <ul style="list-style-type: none"> Unlike the HP 2800 series, the WorkCentre C2424 requires no extra programs to remove its software | 1 minute and 23 seconds with no reboot using Windows Add or Remove Programs | 13 + minutes using 2 HP programs, 1 Windows program and and 2 PC reboots |
| Security highlights <ul style="list-style-type: none"> Secure Print on the WorkCentre C2424 means “your eyes only” printing – storing each job on its hard drive until you enter a PIN. And with Image Overwrite, your sensitive data will be permanently erased when you are finished. Scan to a Public or Private Folder as well as password protect access to color copying Use the WorkCentre C2424 device's Host Access List to limit computers that can print or scan to the device | | |

1. Times based on WorkCentre C2424 and HP 2840 testing. (Mixed graphics and text documents. Default quality mode)

Competitive Comparison

Other Xerox WorkCentre C2424 Advantages

Simple design = simple maintenance

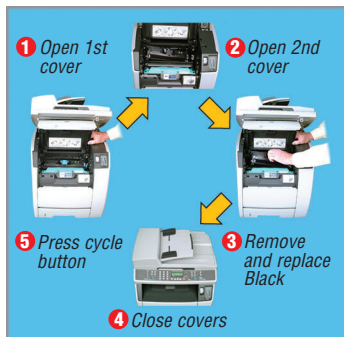
The C2424's solid ink technology is legendary for its ease of use. Loading ink is as easy as loading a stapler...even a child can do it.

The HP device, as you can see in the photo series, is a complicated device. Opening its front cover engages dozens of moving plastic parts that can be broken. And the number of steps it takes to replace toner cartridges is far more than what is required for the Xerox C2424.

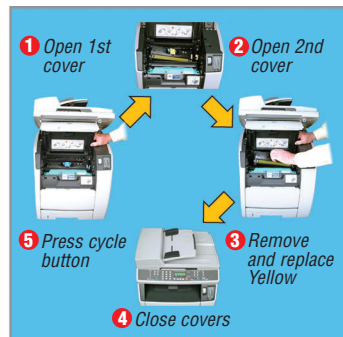
C2424



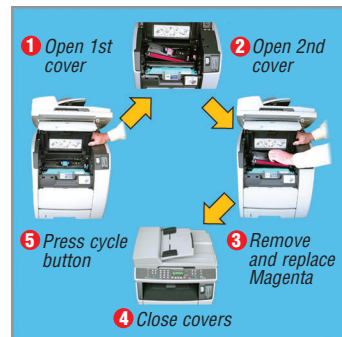
HP 2800 series



Black Toner



Yellow Toner



Magenta Toner

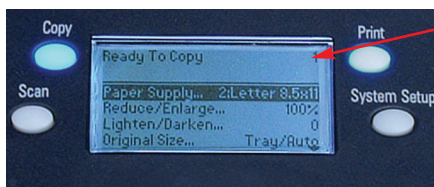


Cyan Toner

Front display panel eliminates guesswork

The C2424's front panel display is larger and shows more helpful information, including animated graphics to aid in maintenance.

The HP 2800 series' front panel is smaller, provides less information at-a-glance, and requires more button pushing to find what you need.



Xerox C2424

Six-line display complete with animations

Limited two-line display with no animation



HP 2800 AiO series

Real-world performance

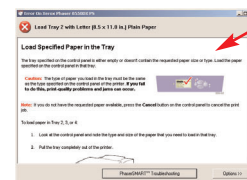
The C2424 has a dramatic performance advantage over HP's LaserJet AiO in both specifications and (more importantly) real-world performance.

| | C2424 | HP 2800 series |
|---|------------|----------------|
| Monochrome e-mail (1 page) ² | 8 seconds | 24 seconds |
| Excel spreadsheet (1 page) ² | 8 seconds | 35 seconds |
| Real estate PDF (2 pages) ² | 14 seconds | 37 seconds |
| PowerPoint presentation on paper (8 pages) ² | 41 seconds | 295 seconds |
| Complex multilayered file ² | 59 seconds | 493 seconds |

2. All pages printed in default print mode on letter-size media.

Xerox PrintingScout

The C2424's proactive PrintingScout provides instant, detailed, and graphical on-screen alerts with instructions on what to do. Advantages include productivity gains plus reduction in support requests to the help desk.



Xerox PrintingScout

Easy to understand instructions get users printing fast

Free Manuals Download Website

<http://myh66.com>

<http://usermanuals.us>

<http://www.somanuals.com>

<http://www.4manuals.cc>

<http://www.manual-lib.com>

<http://www.404manual.com>

<http://www.luxmanual.com>

<http://aubethermostatmanual.com>

Golf course search by state

<http://golfingnear.com>

Email search by domain

<http://emailbydomain.com>

Auto manuals search

<http://auto.somanuals.com>

TV manuals search

<http://tv.somanuals.com>