

LS9 Editor

Owner's Manual

Special Notices

- The software and this owner's manual are the exclusive copyrights of Yamaha Corporation.
- Copying of the software or reproduction of this manual in whole or in part by any means is expressly forbidden without the written consent of the manufacturer.
- Copying of the commercially available music sequence data and/or digital audio files is strictly prohibited except for your personal use.
- Yamaha makes no representations or warranties with regard to the use of the software and documentation and cannot be held responsible for the results of the use of this manual and the software.
- The screen displays as illustrated in this owner's manual are for instructional purposes, and may appear somewhat different from the screens which appear on your computer.
- Future upgrades of application and system software and any changes in specifications and functions will be announced separately.
- Windows is a registered trademark of Microsoft Corporation in the U.S. and other countries.
- Apple, Mac and Macintosh are trademarks of Apple Inc., registered in the U.S. and other countries.
- The company names and product names in this Owner's Manual are the trademarks or registered trademarks of their respective companies.

Yamaha Pro Audio Global Site

<http://www.yamahaproaudio.com/>

Contents

Getting Started	2
Master window	10
Overview window	13
Custom Fader Layer window	24
Selected Channel window.....	26
Library window	45
Patch Editor window.....	48
Rack window	52
Meter window	61
Group/Link window	64
Scene window	67
Custom Fader Layer Setup window	74
User Defined Keys Setup window.....	75
Keyboard Shortcuts.....	76
Appendix	77

* Specifications and descriptions in this owner's manual are for information purposes only. Yamaha Corp. reserves the right to change or modify products or specifications at any time without prior notice.

Description of menus and buttons

In the event that menu and button names on a Windows system are different from those on a Mac, this manual uses the Windows menu and button names followed by the Mac menu and button names in parentheses.

Getting Started

Overview of LS9 Editor

LS9 Editor enables you to remotely control the Yamaha LS9 mixing console and to save the parameter settings on your computer. To use LS9 Editor, you must first perform the following operations:

- 1 Start and configure Studio Manager.
- 2 Start and configure LS9 Editor.
- 3 Synchronize LS9 Editor with your LS9 console (➔ p.8).

NOTE For more information on using Studio Manager, refer to the Studio Manager Owner's Manual.

Configuring LS9 Editor

You must configure the following settings for each open Editor.

- NOTE**
- Before you make the following settings, you must make settings for the DME-N Network Driver (Windows) or the Network-MIDI Driver (Mac) and select the MIDI port in the Setup window of Studio Manager.
 - To open an editor, double-click the icon for the desired editor in the Studio Manager window.

System Setup

To open the System Setup window, choose [System Setup] from the [File] menu.

NOTE Be sure to specify the Input port and Output port.

① Input port/Output port

From the ports you specified in Studio Manager, select the ports that the editor will use to communicate with the LS9 console.

② Fast Sync

This allows synchronization to be speed up, reducing the time required. This check box enables/disables this function. You should disable this if synchronization errors occur while this functions enabled.

③ Window Control from Console

Allows the LS9 Editor windows to be opened and closed remotely using the USER DEFINED KEYS of the LS9 console. The check box enables/disables these operations.

④ Level Meter

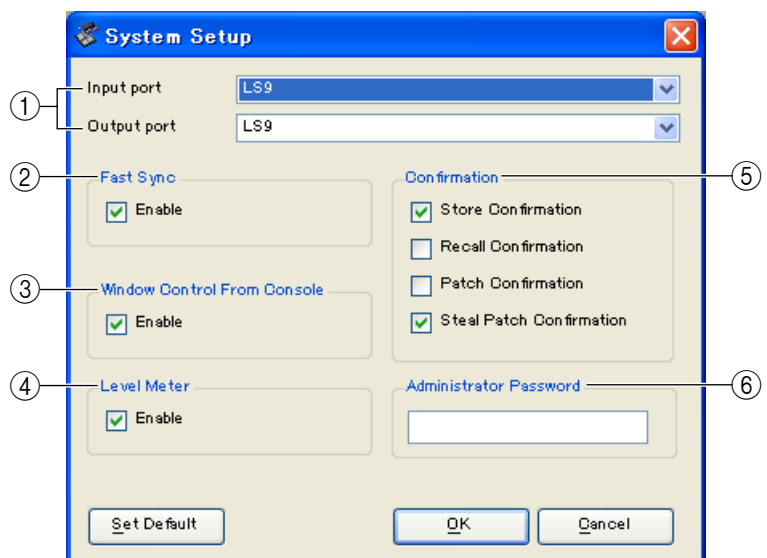
By disabling the meter function you can reduce the processing load caused by screen drawing and communication. This check box enables/disables the level meter function.

⑤ Confirmation

These check boxes specify whether a confirmation dialog box will be displayed when you store (Store Confirmation), recall (Recall Confirmation), patch (Patch Confirmation), or patch in a way that would affect an existing patch (Steal Patch Confirmation).

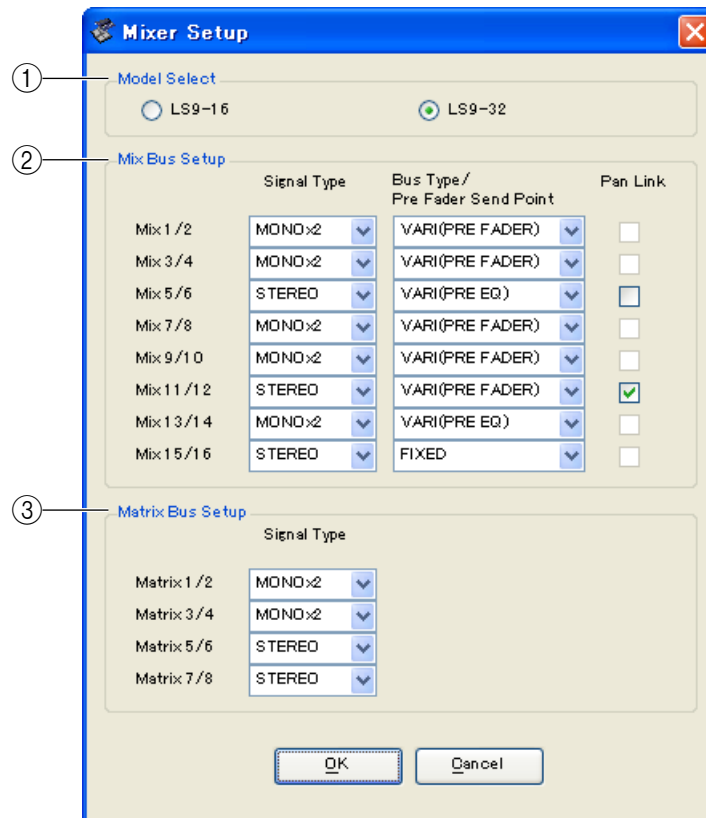
⑥ Administrator Password

Enter the Administrator password that was specified on the LS9 console. If this password is not entered correctly, it will not be possible to synchronize from LS9 Editor to the LS9 console.



❑ Mixer Setup

To open the Mixer Setup window, choose [Mixer Setup] from the [File] menu.



① ModelSelect

Here you can specify the model of LS9 console. This is set automatically when the Editor synchronizes with the LS9 console.

② Mix Bus Setup

Here you can make settings relating to the MIX buses.

Signal Type: This specifies whether each two adjacent odd-numbered/even-numbered MIX buses will be used as MONO x2 or STEREO.

Bus Type/Pre Fader Send Point: Specifies whether the Send Point of each two adjacent odd-numbered/even-numbered MIX buses will be VARI (PRE EQ), VARI (PRE FADER), or FIXED.

Pan Link: This is valid only when the Signal Type is STEREO and the BUS TYPE is VARI; when enabled, the PAN setting sent to the stereo MIX bus will be linked with the PAN to the STEREO bus.

③ Matrix Bus Setup

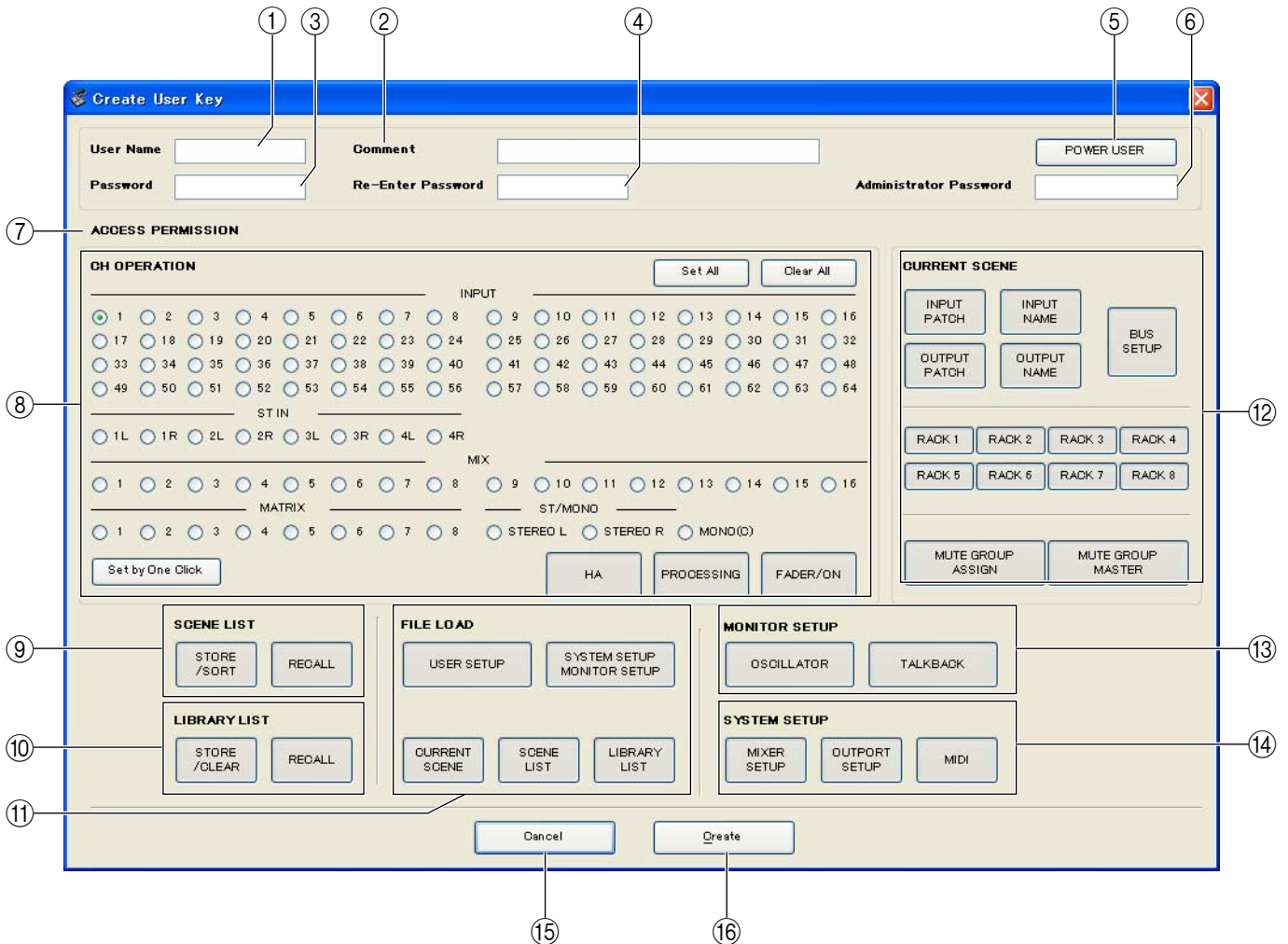
Here you can make settings relating to the MATRIX buses.

Signal Type: This specifies whether each two adjacent odd-numbered/even-numbered MATRIX buses will be used as MONO x2 or STEREO.

❑ Creating a user key

To open the Create User Key window, choose [Create User Key] from the [File] menu.

This creates a user key (with “.L9U” file name extension) that can be read from a USB storage device by the LS9 console to automatically set user-specific parameters.



① User Name

Specify the name of the user. You can enter up to eight single-byte characters of alphabet and numerals.

② Comment

Enter a comment for each user. You can enter up to thirty-two single-byte alphanumeric characters.

③ Password

Enter a password that will be used when this user key is read by the LS9 console. You can enter up to eight single-byte alphanumeric characters. Uppercase and lowercase are distinguished.

④ Re-Enter Password

Enter the password once again as a safeguard against mistaken entry.

⑤ POWER USER

Specify whether this user is a power user. Power users can use the LS9 console to create or edit a user authentication key with a specified user level.

⑥ Administrator Password

Enter the Administrator password that was specified on the LS9 console. This is not required if no Administrator password has been specified on the LS9 console, but if this password is incorrect you will be asked to enter it when the user key is read.

⑦ ACCESS PERMISSION

In this area, specify the parameters that this user will be allowed to operate.

⑧ CH OPERATION

INPUT, ST IN, MIX, MATRIX, ST/MONO: Select the channels whose parameters will be operable.

HA: Change the operating privileges for the head amp gain and phantom power of the selected channels.

PROCESSING: Change the operating privileges for overall signal processing parameters (except for fader and [ON] key) of the selected channel. For the specific parameters included in PROCESSING, refer to the appendix of the LS9 owner's manual.

FADER/ON: Change the operating privileges for the pan/balance, fader, channel on, send on/off, and send level of the selected channels.

Set All: Turn on HA, PROCESSING, and FADER/ON for all channels.

Clear All: Turn off HA, PROCESSING, and FADER/ON for all channels.

Set by One Click: If this button is on, HA, PROCESSING, and FADER/ON will all be turned on when you select a channel. If all are already on, all will be turned off.

⑨ SCENE LIST

STORE/SORT: Change the operating privileges for scene store and sort operations.

RECALL: Change the operating privileges for scene recall operations.

⑩ LIBRARY LIST

STORE/CLEAR: Change the operating privileges for library store and clear operations.

RECALL: Change the operating privileges for library recall operations.

⑪ FILE LOAD

USER SETUP: Change the operating privileges for loading user-defined keys and preferences when loading a file.

SYSTEM SETUP MONITOR SETUP: Change the operating privileges for loading system setup and monitor setup settings when loading a file.

CURRENT SCENE: Change the operating privileges for loading the current scene when loading a file.

SCENE LIST: Change the operating privileges for loading the scene list when loading a file.

LIBRARY LIST: Change the operating privileges for loading the library list when loading a file.

⑫ CURRENT SCENE

INPUT PATCH: Change the operating privileges for input patch operations.

INPUT NAME: Change the privileges for editing the input names.

OUTPUT PATCH: Change the operating privileges for output patching.

OUTPUT NAME: Change the privileges for editing the output names.

BUS SETUP: Change the operating privileges for buses.

RACK: Change the operating privileges for rack operations.

MUTE GROUP ASSIGN: Change the privileges for assigning mute groups.

MUTE GROUP MASTER: Change the operating privileges for enabling/disabling mute groups.

⑬ MONITOR SETUP

OSCILLATOR: Change the operating privileges for oscillator settings.

TALKBACK: Change the operating privileges for talkback settings.

⑭ SYSTEM SETUP

MIXER SETUP: Change the privileges for making mixer setup settings.

OUTPORT SETUP: Change the privileges for making outport setup settings.

MIDI: Change the privileges for making MIDI settings.

⑮ Create

Creates the user key.

⑯ Cancel

Closes the window.

Working with Sessions

All of your console's mix settings in LS9 Editor, including Scene and library data, are called Sessions. The following table describes how to handle Sessions.

Creating a new Session	Choose [New Session] from the [File] menu.
Opening a previously saved Session	Choose [Open Session] from the [File] menu.
Saving the current Session	Choose [Save Session] from the [File] menu.
Saving the current Session with a new name	Choose [Save Session As...] from the [File] menu.

When you save a session in the window of an editor, the settings of only that editor will be saved in a file. Session files saved by LS9 Editor have a filename extension of ".YSE". Files in which only the LS9 console data is saved (filename extension ".L9A") can also be handled, allowing you to use a USB storage device to exchange data with the LS9 console.

If you save a Session in the Studio Manager window, all selected Editor settings are saved in a file with a file extension of ".YSM."

Undo/Redo Function

In LS9 Editor, you can cancel the latest operation (Undo) and also cancel the cancellation of the latest operation (Redo). If you perform an Undo operation twice in a row, you can cancel the two most-recent operations. If you perform an Undo operation three times in a row, you can cancel the three most-recent operations. In this way, you can cancel multiple recent operations. The following table describes how to use the Undo/Redo function.

Undo	Choose [Undo] from the [Edit] menu.
Redo	Choose [Redo] from the [Edit] menu.

Please note, however, that after you perform one of the following operations, you cannot successfully undo or redo any previous operation:

- Operations on the LS9 console
- Quitting Studio Manager
- Synchronizing with the LS9 console
- Session operations

NOTE You cannot Undo or Redo the following operations:

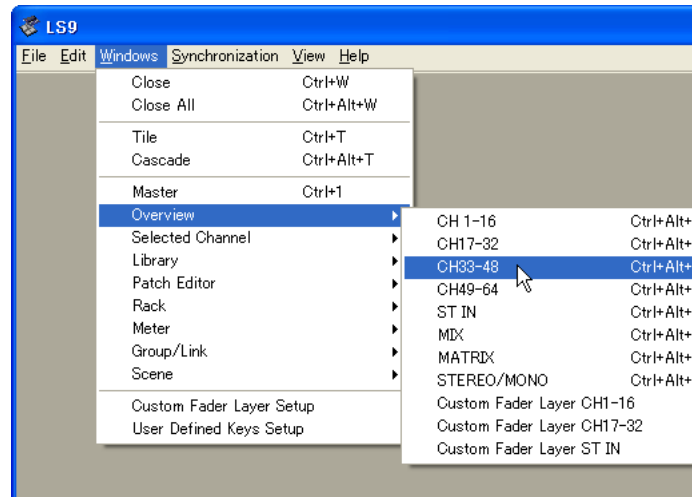
- Edits in the Setup window
- Synchronization
- Opening and closing the windows
- Resizing or moving the windows

There are certain other operations that cannot be undone, depending on the function.

NOTE For library or scene operations, Undo/Redo applies only to the single most recent operation. You cannot undo any operations prior to this. Undo/Redo in these windows is available only using the [UNDO] button within the respective window. Even if you perform a scene recall from the Master window, you cannot use a shortcut or menu operation to undo the recall.

Window operations

You can select and open each window from the [Windows] menu. For the Overview window and Rack window, use the sub-menu to select the channels or library you want to see.

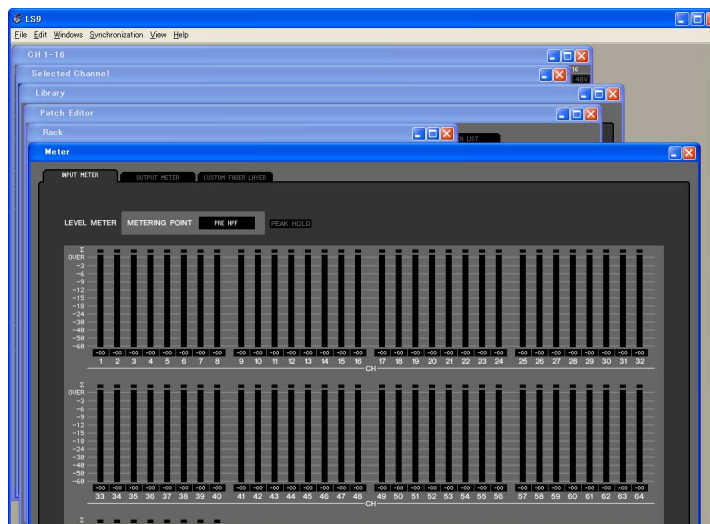


You can choose Tile or Cascade to arrange the windows within the editor.

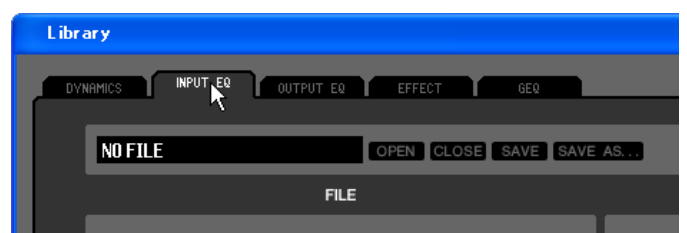
- Tile



- Cascade



In the Library window or Scene window, click the tabs located at the top of the window to switch between pages.



Synchronizing LS9 Editor

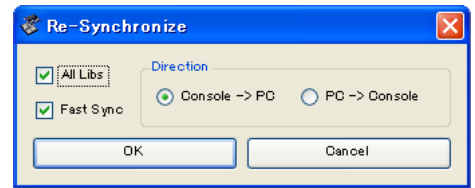
When LS9 Editor starts up, the parameter settings on the console and the parameter settings in LS9 Editor may be different. Therefore, you must first match the parameter settings on the console with those in LS9 Editor. This operation is called “synchronization.” Follow the steps below to synchronize LS9 Editor.

1 Select [Synchronization], then [Re-synchronize].

The following window opens.

2 Select whether you want to transfer your settings to LS9 Editor, or vice versa.

At this time, the All Libs option determines whether or not Scene and Library data is synchronized.



PC → Console: Transfers the current parameter settings in LS9 Editor to your console.

Console → PC: Transfers the current parameter settings of your console to the LS9 Editor.

3 Click [OK].



Do not operate the console while synchronization is in progress.

NOTE

- If you use the “Total Recall” function in Studio Manager, all selected Editors in Studio Manager are synchronized with the corresponding devices.
- If you synchronize using PC -> Console, and the console contains data that is set to “read-only,” a dialog box will ask you whether you want to copy the read-only data to LS9 Editor. If this data is not copied, console data that is set to read-only status will not be synchronized.

Offline Edit Function

If you do not want to synchronize your console with LS9 Editor, select [Offline Edit] from the [Synchronization] menu. To apply your off-line edits to your console, select [Re-Synchronize] from the [Synchronization] with the PC -> Console option to synchronize the console with LS9 Editor.

The Offline Edit function is also activated when you click the [ONLINE]/[OFFLINE] button in the Sync window.

NOTE

Some effect parameters in the console change their displayed values depending on the sampling frequency. If you switch LS9 Editor from OFFLINE to ONLINE, displayed parameter values may change because LS9 Editor loads the sampling frequency from the console and updates the display.

Basic operation of controllers

You can operate the controllers in the following ways.

□ Knobs

- Drag
- Click, and then use the up/down/left/right cursor keys
- Click, and then use the PageUp/PageDown keys (greater change than the cursor keys)
- Click, and then Home sets to far left
- Click, and then End sets to far right
- <Ctrl>(<⌘>)+click sets to default value
For send knobs etc., sets to $-\infty$ regardless of the default value.
- <Ctrl>(<⌘>)+<Shift>+click sets to nominal
For send knobs etc., sets to nominal regardless of the default value.

❑ Faders

- Drag
- Click, and then use the up/down cursor keys (or left/right cursor keys for horizontal faders)
- Click, and then use the PageUp/PageDown keys (greater change than the cursor keys)
- Click, and then Home sets to maximum value
- Click, and then End sets to minimum value
- <Ctrl>(<⌘>)+click sets to default value
For channel faders etc., sets to $-\infty$ regardless of the default value.
- <Ctrl>(<⌘>)+<Shift>+click sets to nominal
For channel faders etc.,sets to nominal regardless of the default value.

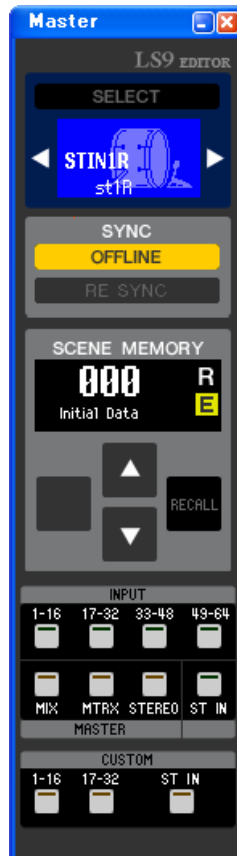
❑ Numerical displays only

- Click and drag up/down
- Click, and then use the up/down cursor keys
- Click, and then use the PageUp/PageDown keys (greater change than the cursor keys)
- Click, and then Home sets to maximum value
- Click, and then End sets to minimum value
- <Ctrl>(<⌘>)+click sets to default value

❑ Bar graphs

- Drag
- <Ctrl>(<⌘>)+click sets to $-\infty$
- <Ctrl>(<⌘>)+<Shift>+click sets to nominal

Master window



In the Master window you can synchronize settings with the LS9 console, recall scenes, and access the Overview window. To open this window, choose [Master] from the [Windows] menu, or assign [LS9 EDITOR CONTROL]-[MASTER] to a USER DEFINED KEY on the LS9 console, and execute that function.

CHANNEL SELECT



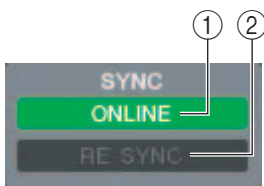
This indicates the number and name of the channel to which your operations will apply. To switch channels, you can either click the [SELECT] button and choose from the list that appears, or you can click the left/right arrow-shaped channel select buttons. You can use the channel name text box to edit the name.

This is linked with the [SEL] keys on the LS9 itself.

You can change the icon by right-clicking (<control> key + clicking) it, or change the background color by left-clicking.

The background color you specify here will also be the background color for the channel name in the Overview window.

SYNC



This indicates the status of connection and synchronization between LS9 Editor and the LS9.

① [ONLINE]/[OFFLINE] button

The ONLINE/OFFLINE status will alternate each time you click this button.

This has the same function as [Synchronization] menu → [Offline Edit]. (➔ p.8)

ONLINE

This indicator is shown when LS9 Editor is correctly connected to the LS9 itself. In this state, the parameters of LS9 Editor and the LS9 itself are linked.

OFFLINE

This indicator is shown when LS9 Editor and the LS9 itself are not connected, or when there is a problem with the connection, or when Offline Edit is selected. In this state, the parameters of LS9 Editor and the LS9 itself are not linked.

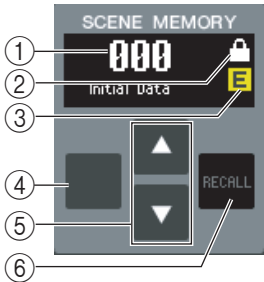
② [RE SYNC] button

Clicking this button opens the Synchronization dialog box.

This has the same function as [Synchronization] menu → [Re-Synchronize]. (➔ p.8)

□ SCENE MEMORY

Here you can view the currently-recalled scene, and recall or store scenes.



① Scene number display

Indicates the number of the scene that is selected for store or recall.

② Protect indicator

A lock icon is shown for scene memories that are protected. Read-only scene memories are indicated by “R” displayed.

③ Edit indicator

The edit indicator will light when you edit the parameters after recalling a scene.

④ [STORE] button

This button stores the current scene into the number shown by the scene number display (①).

⑤ [▲]/[▼] buttons

These buttons increment or decrement the number shown in the scene number display (①). The scene number display (①) will blink until you actually store or recall, and while blinking will not match the scene number indicated on the LS9.

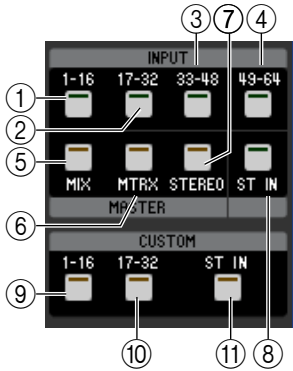
⑥ [RECALL] button

This button recalls the scene of the number shown in the scene number display (①).

□ Layer Keys

These keys open the respective Overview window.

NOTE These are not linked with the layer section on the LS9's panel.



① [1-16] button

Opens the INPUT CH 1–16 window.

② [17-32] button

Opens the INPUT CH 17–32 window.

③ [33-48] button

Opens the INPUT CH 33–48 window.

This is available only if you're editing offline and have selected LS9-32 in the Model Select field of the Mixer Setup screen, or if you're editing online with the LS9-32 connected.

④ [49-64] button

Opens the INPUT CH 49–64 window.

This is available only if you're editing offline and have selected LS9-32 in the Model Select field of the Mixer Setup screen, or if you're editing online with the LS9-32 connected.

⑤ [MIX] button

Opens the MIX window.

⑥ [MATRIX] button

Opens the MATRIX window.

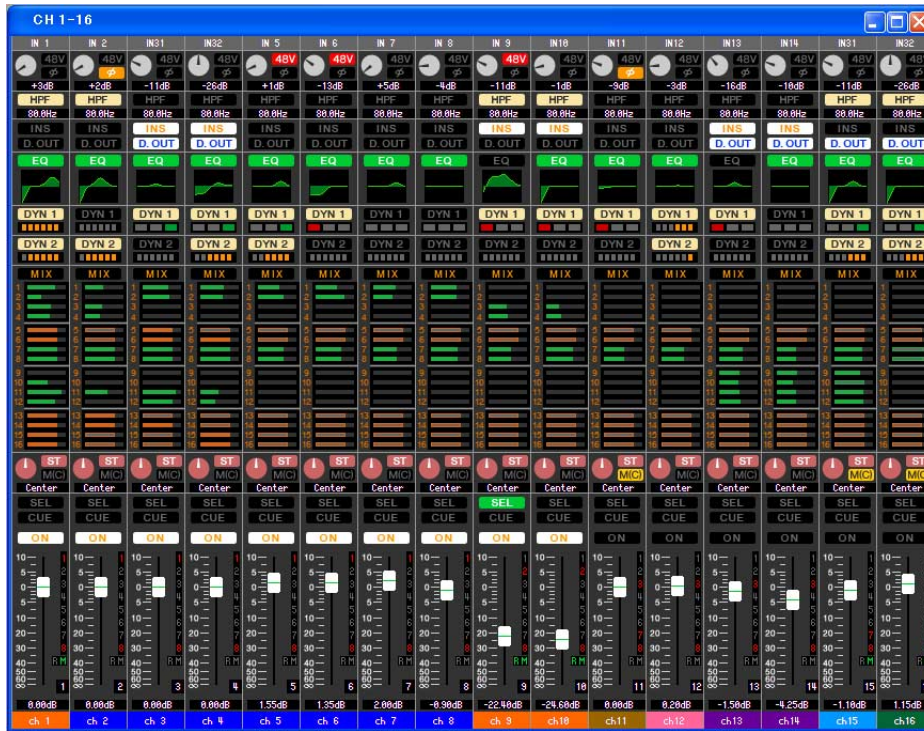
⑦ [STEREO] button

Opens the STEREO/MONO window.

- ⑧ **[ST IN] button**
Opens the STEREO IN window.
- ⑨ **[1-16] button**
Opens the Custom Fader Layer (INPUT CH) CH 1–16 window.
- ⑩ **[17-32] button**
Opens the Custom Fader Layer (INPUT CH) CH 17–32 window.
This is available only if you're editing offline and have selected LS9-32 in the Model Select field of the Mixer Setup screen, or if you'e editing online with the LS9-32 connected.
- ⑪ **[ST IN] button**
Opens the Custom Fader Layer (ST IN) window.

Overview window

INPUT CH window

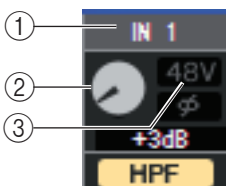


This window displays the mix parameters of INPUT CH 1–16, 17–32, 33–48(*), or 49–64(*). The parameters shown in the window can be selected from the [View] menu or the menu that appears when you right-click (<control> key + click) in the window.

You can access this window in the following ways.

- From the [Windows] menu, choose [Overview] and select CH1-16/CH17-32/33-48(*)/49-64(*)
- Use the layer keys in the Master window to turn on the [1-16] button / [17-32] button / [33-48] button(*) / [49-64] button(*)
- On the LS9 itself, assign one of the USER DEFINED KEYS to [CH1-16]/[CH17-32]/[CH33-48]*/[CH49-64] in [OVERVIEW] of [LS9 EDITOR CONTROL], and execute the function

(*) INPUT CH 33-48, 49-64 can be viewed only if LS9-32 is selected in the Model Select field of the Mixer Setup window when editing offline, or when editing online with the LS9-32.



① Input patch

Click here to select the input source that will be assigned to the INPUT CH, from the following choices.

NONE	No assignment
IN 1-IN32(*)	INPUT jacks 1–32(*)
SLOT1-1...SLOT1-16, SLOT2-1(*)...SLOT2-16(*)	Input channels of an I/O card installed in a slot
2TR IN L, 2TR IN R	L/R channels of the 2TR DIN jack
PB OUT L, PB OUT R	L/R channels of USB memory recorder output
RACK1A, RACK1B... RACK5L(A)...RACK8R(B)	L/R outputs of Rack 1–8

(*) INPUT jacks 17-32 and slot 2 can be viewed only if you're editing offline and have selected LS9-32 in the Model Select field of the Mixer Setup screen, or if you're editing online with the LS9-32.

② HA GAIN

Drag the knob in the screen to adjust the gain of the internal head amp or of the external head amp (AD8HR) patched to the INPUT CH.

③ 48V

Switches on/off the phantom power (+48V) of the internal head amp or of the external head amp (AD8HR) patched to the INPUT CH.



④ Ø (Phase)

Inverts the phase of the signal after AD conversion.

⑤ HPF (High Pass Filter)

Switches the high pass filter on/off. You can drag the numeric value up or down to edit the cutoff frequency.

⑥ INS (Insert)

Enables/disables the insert-in. (INPUT CH 1–32 only)

⑦ D. OUT (Direct out)

Enables/disables the direct output.

⑧ EQ (Equalizer)

Switches the EQ on/off. The graph immediately below the button shows the approximate response of the EQ. You can drag within the graph to edit the response of the EQ. To reset the EQ to flat response, hold down the <Ctrl>(<⌘>) key of your computer keyboard and click the graph (The HPF setting will remain).

⑨ DYN1/DYN2 (Dynamics 1/Dynamics 2)

Turns the two dynamics processors on/off.

If Gate is assigned (Dynamics 1 only), the status of the gate is shown immediately below the button.

Gate status indication				
On/off status	On	On	On	Off
Open/closed status	Closed	Open	Open	—
Remarks	Gain reduction amount is 30 dB or more	Gain reduction amount is 0–30 dB	Gain reduction amount is 0 dB	—

If something other than Gate is assigned, a GR meter is shown immediately below the button, and the amount of gain reduction is shown while this is on.

The type for each dynamics processor can be selected in the Selected Channel window.

⑩ MIX SEND

The bar graphs located immediately below the button show the send level of the signals sent from the INPUT CH to VARI type MIX buses. You can also drag the bar graph to left or right to set the send level. While you drag the bar graph, the send level is shown in the numerical display area for PAN/TO STEREO MONO (⑪).

You can set the minimum value ($-\infty$ dB) by holding down the <Ctrl>(<⌘>) key of your computer keyboard and clicking the bar graph, or set the nominal value (0.00 dB) by holding down the <Ctrl>(<⌘>) key and <Shift> key and clicking the bar graph.

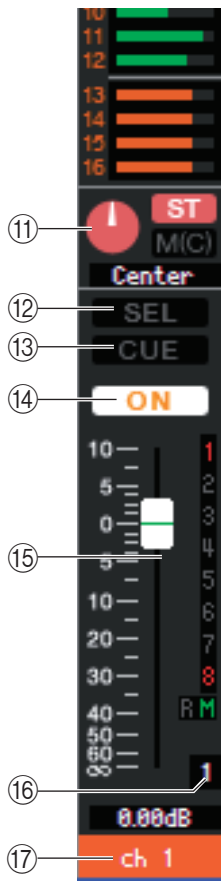
The bar graph display will change according to the send position (pre/post) and on/off status of the signal sent from the INPUT CH to the MIX buses.

To switch a send on/off, click the channel number located at the left of the bar graph.

NOTE For FIXED-type MIX buses, the bar graph is fixed at nominal level (0 dB), and only the on/off status is shown.



- Pre/on (green)
- Pre/off (green)
- Post/on (yellow)
- Post/off (yellow)



⑪ PAN/TO STEREO MONO

The **PAN knob** adjusts the panning of the signal that is sent from the INPUT CH to the STEREO bus L/R channels (or the L/C/R channels). You can set this to the center value by holding down the <Ctrl>(<⌘>) key of your computer keyboard and clicking this knob.

The **[ST] button** is an on/off switch for the signal that is sent from the INPUT CH to the STEREO bus.

The **[M(C)] button** is an on/off switch for the signal that is sent from the INPUT CH to the MONO bus.

If LCR MODE is selected in the Selected Channel window, the **[LCR]** button will appear instead of the [ST] button and [M(C)] button, and the [LCR] button will be an on/off switch for the signal that is sent from the INPUT CH to the LCR bus.

⑫ SEL (Select)

Selects the INPUT CH for which you want to perform operations. This is linked with the INPUT section [SEL] keys on the LS9's panel.

⑬ CUE

This button cue-monitors the signal of the INPUT CH. This is linked with the INPUT section [CUE] keys on the LS9's panel.

⑭ ON

Switches the INPUT CH on/off. This is linked with the INPUT section [ON] keys on the LS9's panel.

⑮ Fader

Adjusts the input level of the INPUT CH. When the LS9 itself is in other than SENDS ON FADER mode, this is linked with the INPUT section faders of the LS9's panel.

The current fader value is shown in the numerical box located immediately below the fader.

You can set this to the minimum value ($-\infty$ dB) by holding down the <Ctrl>(<⌘>) key of your computer keyboard and clicking the fader knob, or set it to the nominal value (0.00 dB) by holding down the <Ctrl>(<⌘>) key and <Shift> key and clicking the fader knob.

The numbers and alphabetical letters at the right of the fader indicate the mute groups to which that channel belongs, and show the Recall Safe and Mute Safe status of the channel.



The numbers of mute groups to which this channel belongs are shown in red.

If this channel is set to Recall Safe, the R character is shown in green.

If this channel is set to Mute Safe, the M character is shown in green.

⑯ Channel number

This is the number of the INPUT CH. You can open the Selected Channel window for this channel by double-clicking this number. If you hold down the <Ctrl>(<⌘>) key of your computer keyboard and double-click this, the Selected Channel window will open as an additional view.

⑰ Channel name

This is a text box that displays the channel name. You can also edit the channel name in this text box.

The background color will be the same as the background color of the icon in the channel select area of the Selected Channel window.

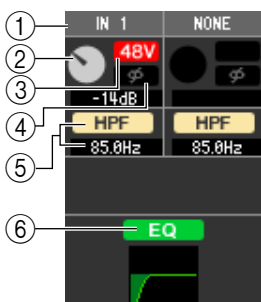
ST IN window



In this window you can view and edit the mix parameters of ST IN CH 1–4. The parameters shown in the window can be selected from the [View] menu or the menu that appears when you right-click (<control> key + click) in the window.

You can access this window in the following ways.

- From the [Windows] menu, choose [Overview] and then choose “ST IN”
- Use the layer keys in the Master window to turn on the [ST IN] button
- On the LS9 console, assign a USER DEFINED KEY to [LS9 EDITOR CONTROL]-[OVERVIEW]-[ST IN], and execute it



① INPUT PATCH

This selects the input source assigned to the ST IN CH. The input sources that can be selected are the same as the INPUT CH.

② HA GAIN

Drag the knob in the screen to adjust the gain of the internal head amp or of the external head amp (AD8HR) patched to the ST IN CH.

③ 48V

Switches on/off the phantom power (+48V) of the internal head amp or of the external head amp (AD8HR) patched to the ST IN CH.

④ Ø (Phase)

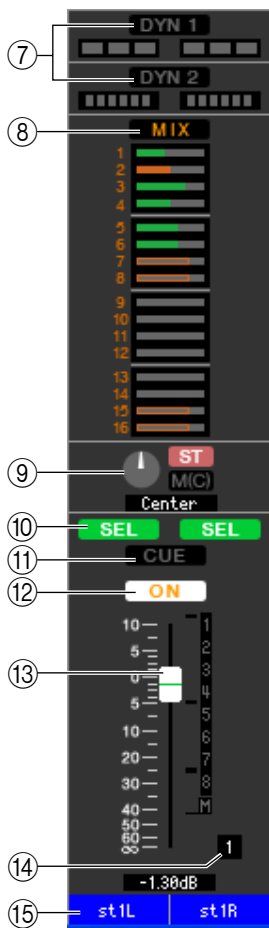
Inverts the phase of the signal after AD conversion.

⑤ HPF (High Pass Filter)

Switches the high pass filter on/off. You can drag the numeric value up or down to edit the cutoff frequency.

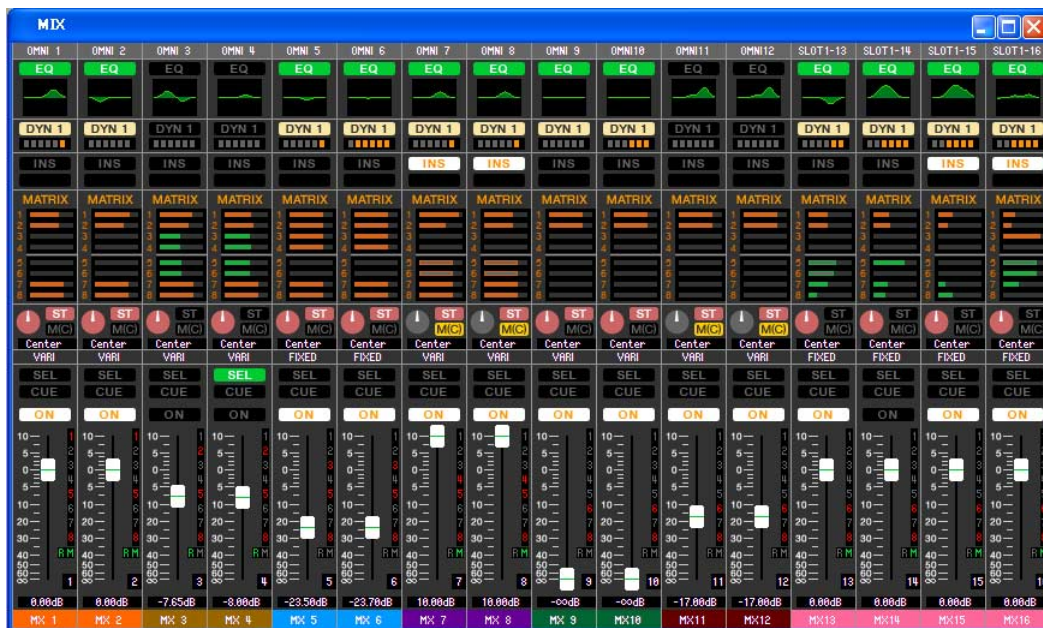
⑥ EQ (Equalizer)

Switches the EQ on/off (the L/R settings are linked). This is the same as the equalizer for INPUT CH (➔ p.14).



- ⑦ **DYN1/DYN2 (Dynamics 1//Dynamics 2)**
These buttons switch the two dynamics processors on/off. This is the same as the dynamics 1/dynamics 2 for INPUT CH (➡ p.14).
- ⑧ **MIX SEND**
This is the same as the mix send for INPUT CH (➡ p.14).
- ⑨ **BALANCE**
The **BALANCE knob** adjusts the balance of the signal that is sent from the ST IN CH to the STEREO bus L/R channels (or the L/C/R channels). Other than the BALANCE knob, this is the same as PAN/TO STEREO MONO for an INPUT CH (➡ p.15).
- ⑩ **SEL (Select)**
Selects the ST IN CH for which you want to perform operations. (L and R can be selected separately.) This is linked with the ST IN section [SEL] keys on the LS9's panel.
- ⑪ **CUE**
This button cue-monitors the signal of the ST IN CH (L/R are linked). This is linked with the ST IN section [CUE] keys on the LS9's panel.
- ⑫ **ON**
Switches the ST IN CH on/off (the L/R settings are linked). This is linked with the ST IN section CH [ON] keys on the LS9's panel.
- ⑬ **Fader**
Adjusts the input level of the ST IN CH. When the LS9 itself is in other than SENDS ON FADER mode, this is linked with the INPUT section faders of the LS9's panel.
The current fader value is shown in the numerical box located immediately below the fader. This is the same as the fader for INPUT CH (➡ p.15).
- ⑭ **Channel number**
This is the number of the ST IN CH. You can double-click this number to open the Selected Channel window for this channel. If you hold down the <Ctrl>(<⌘>) key of your computer keyboard and double-click this, the Selected Channel window will open as an additional view.
- ⑮ **Channel name**
This is a text box that displays the channel name. You can also edit the channel name in this text box.
The background color will be the same as the background color of the icon in the channel select area of the Selected Channel window.

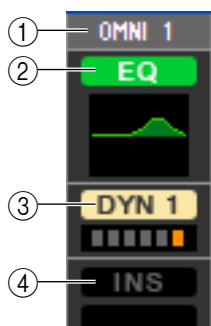
MIX window



In this window you can view and edit the parameters of MIX channels 1–16. The parameters shown in the window can be selected from the [View] menu or the menu that appears when you right-click (<control> key + click) in the window.

You can access this window in the following ways.

- From the [Windows] menu, choose [Overview] and then choose “MIX”
- Use the layer keys in the Master window to turn on the [MIX] button
- On the LS9 console, assign a USER DEFINED KEY to [LS9 EDITOR CONTROL]-[OVERVIEW]-[MIX], and execute it



① OUTPUT PATCH

Click here to select the output port that will be assigned to the MIX channel, from the following choices.

OMNI1–OMNI16(*)	OMNI jacks 1–16(*)
SLOT1-1...SLOT1-16, SLOT2-1(*)...SLOT2-16(*)	Output channels of an I/O card installed in a slot
RACK1A, RACK1B... RACK5L(A)...RACK8R(B)	L/R outputs of Rack 1–8
2TR OUT L, 2TR OUT R	L/R channels of the 2TR OUT DIGITAL jack
REC IN L, REC IN R	L/R channels of the USB memory recorder input

(*) OMNI jacks 9–16 and SLOT2 can be viewed only if you’re editing offline and have selected LS9-32 in the Model Select field of the Mixer Setup screen, or if you’re editing online with the LS9-32 connected. If multiple patches have been made, only the first port is shown.

If you change the patching in this window, the port that had been assigned until then will be cancelled, and only the newly selected port will be assigned.

② EQ (Equalizer)

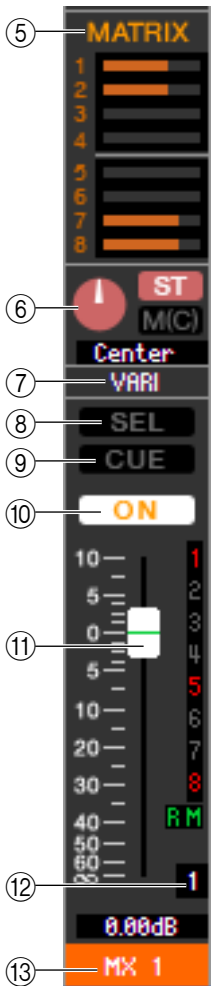
Switches the EQ on/off. This is the same as the equalizer for INPUT CH (➔ p.14).

③ DYN1(Dynamics 1)

Switches the dynamics processor on/off. This is the same as the dynamics 2 for INPUT CH (➔ p.14).

④ INS (Insert)

Enables/disables the insert-in.



⑤ MATRIX SEND

These bar graphs indicate the send levels of the signals sent from the MIX channel to MATRIX 1–8 bus. You can also adjust the send levels by dragging a bar graph to left or right. While you drag the bar graph, the send level is shown in the numerical display area for PAN/BALANCE (⑥).

You can set the minimum value ($-\infty$ dB) by holding down the <Ctrl>(<⌘>) key of your computer keyboard and clicking the bar graph, or set the nominal value (0.00 dB) by holding down the <Ctrl>(<⌘>) key and <Shift> key and clicking the bar graph.

The bar graph display will change as follows according to the send position (pre/post) and on/off status of the signal sent from the MIX channel to the MATRIX buses.

To switch a send on/off, click the channel number located at the left of the bar graph.

- Pre/on (green)
- Pre/off (green)
- Post/on (yellow)
- Post/off (yellow)

⑥ PAN/BALANCE

The **PAN knob** adjusts the panning of the signal that is sent from the mix channel to the STEREO bus L/R channels (or the L/C/R channels). You can set this to the center value by holding down the <Ctrl>(<⌘>) key of your computer keyboard and clicking this knob. If assigned as a stereo bus, this adjusts the balance of the odd-numbered channel and even-numbered channel. The stereo bus setting can be made in Mix Bus Setup of the Mixer Setup screen.

The **[ST] button** is an on/off switch for the signal that is sent from the mix channel to the STEREO bus.

The **[MONO] button** is an on/off switch for the signal that is sent from the mix channel to the MONO bus.

If LCR MODE is selected in the Selected Channel window, the **[LCR] button** will appear instead of the [ST] button and [MONO] button, and the [LCR] button will be an on/off switch for the signal that is sent from the mix channel to the LCR bus.

⑦ VARI/FIXED

Indicates the type (VARI or FIXED) of the currently selected MIX bus. This parameter can be switched in Mix Bus Setup of the Mixer Setup screen.

⑧ SEL (Select)

Selects the MIX channel for which you want to make settings.

⑨ CUE

This button cue-monitors the signal of the MIX channel.

⑩ ON

Switches the MIX channel on/off.

⑪ Fader

Adjusts the output level of the MIX channel. The current fader value is shown in the numeric box immediately below the fader. You can set this to the minimum value ($-\infty$ dB) by holding down the <Ctrl>(<⌘>) key of your computer keyboard and clicking the fader knob, or set it to the nominal value (0.00 dB) by holding down the <Ctrl>(<⌘>) key and <Shift> key and clicking the fader knob.

The numbers and alphabetical letters at the right of the fader indicate the mute groups to which that channel belongs, and show the Recall Safe and Mute Safe status of the channel.



The numbers of mute groups to which this channel belongs are shown in red.

If this channel is set to Recall Safe, the R character is shown in green.

If this channel is set to Mute Safe, the M character is shown in green.

⑫ Channel number

Indicates the number of the MIX channel. You can double-click this number to open the Selected Channel window for this channel. If you hold down the <Ctrl>(<⌘>) key of your computer keyboard and double-click this, the Selected Channel window will open as an additional view.

⑬ Channel name

This is a text box that displays the channel name. You can also edit the channel name in this text box.

The background color will be the same as the background color of the icon in the channel select area of the Selected Channel window.

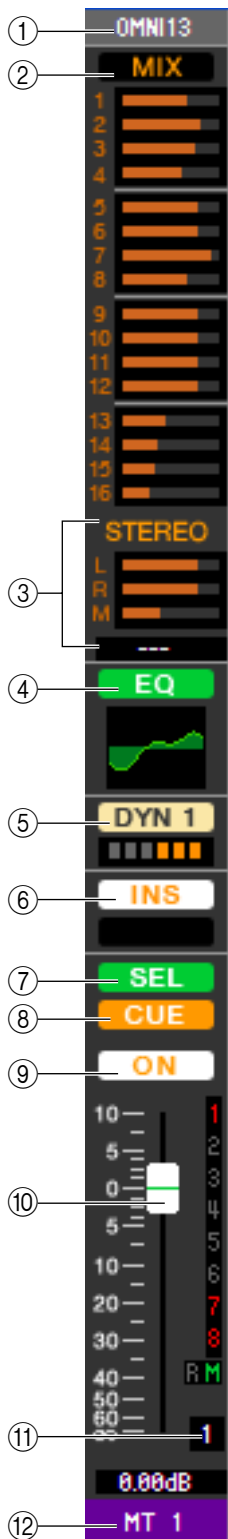
MATRIX window



In this window you can view and edit the parameters of MATRIX channels 1–8. The parameters shown in the window can be selected from the [View] menu or the menu that appears when you right-click (<control> key + click) in the window.

You can access this window in the following ways.

- From the [Windows] menu, choose [Overview] and then choose “MATRIX”
- Use the layer keys in the Master window to turn on the [MTRX] button
- On the LS9 console, assign a USER DEFINED KEY to [LS9 EDITOR CONTROL]-[OVERVIEW]-[MATRIX], and execute it



① **OUTPUT PATCH**

This selects the output port assigned to the MATRIX channel. The output ports that can be selected are the same as for MIX (➔ p.18).

② **MIX (send levels from MIX channels)**

Here you can view and edit the send levels of the signals sent from the MIX channels to the MATRIX bus. The method of operation and the meaning of the display are the same as in (⑤) MATRIX SEND in the MIX window (➔ p.19).

③ **STEREO (Send levels from the STEREO channels to the MATRIX bus)**

Here you can view and edit the send levels of the signals sent from the STEREO channels to the MATRIX bus. While you drag the bar graph, the send level is shown in the numerical display area immediately below. The method of operation and the meaning of the display are the same as for (⑤) MATRIX SEND in the MIX window (➔ p.19).

④ **EQ (Equalizer)**

Switches the EQ on/off. The graph immediately below the button shows the approximate response of the EQ. This is the same as the equalizer for INPUT CH (➔ p.14).

⑤ **DYN1(Dynamics 1)**

Switches the dynamics processor on/off. This is the same as the dynamics 2 for INPUT CH (➔ p.14).

⑥ **INS (Insert)**

Enables/disables the insert-in.

⑦ **SEL (Select)**

Selects the MATRIX channel for which you want to make settings.

⑧ **CUE**

This button cue-monitors the signal of the MATRIX channel.

⑨ **ON**

This switches the MATRIX channel on/off.

⑩ **Fader**

This adjusts the output level of the MATRIX channel. The current fader value is shown in the numeric box immediately below the fader.

The numbers and alphabetical letters at the right of the fader indicate the mute groups to which that channel belongs, and show the Recall Safe and Mute Safe status of the channel. (For the significance of the numbers and alphabetical letters, see ➔ p.19).

⑪ **Channel number**

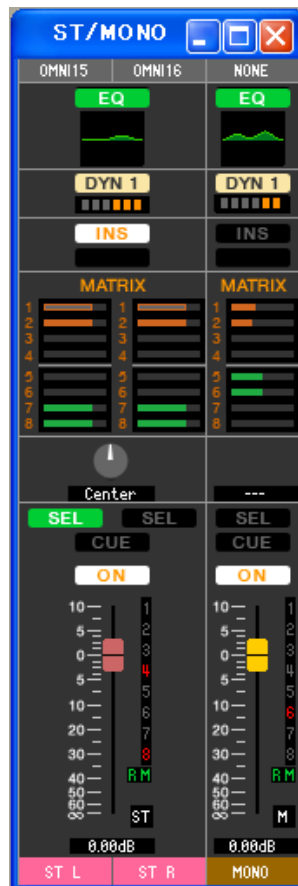
Indicates the number of the MATRIX channel. You can double-click this number to open the Selected Channel window for this channel. If you hold down the <Ctrl>(<⌘>) key of your computer keyboard and double-click this, the Selected Channel window will open as an additional view.

⑫ **Channel name**

This text box shows the channel name. You can edit the channel name within this text box.

The background color will be the same as the background color of the icon in the channel select area of the Selected Channel window.

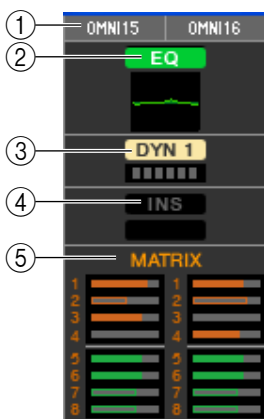
STEREO/MONO window



In this window you can view and edit the parameters of the STEREO and MONO channels. The parameters shown in the window can be selected from the [View] menu or the menu that appears when you right-click (<control> key + click) in the window.

You can access this window in the following ways.

- From the [Windows] menu, choose [Overview] and then choose “STEREO/MONO”
- Use the layer keys in the Master window to turn on the [STEREO] button
- On the LS9 console, assign a USER DEFINED KEY to [LS9 EDITOR CONTROL]-[OVERVIEW]-[ST/MONO], and execute it



① OUTPUT PATCH

This selects the output port assigned to the STEREO/MONO channel. The output ports that can be selected are the same as for MIX (➔ p.18).

② EQ (Equalizer)

Switches the EQ on/off (the L/R settings are linked). This is the same as the equalizer for INPUT CH (➔ p.14).

③ DYN1 (Dynamics 1)

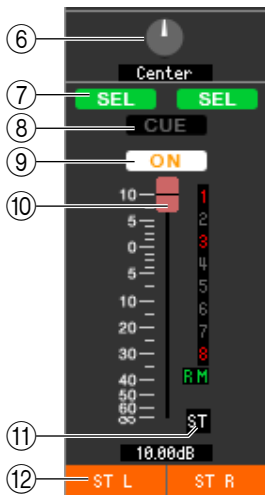
Switches the dynamics processor on/off. This is the same as the dynamics 2 for INPUT CH (➔ p.14).

④ INS (Insert)

Enables/disables the insert-in. (The L/R settings are linked.)

⑤ MATRIX SEND

Here you can view and edit the send levels of the signals sent from the STEREO/MONO channel to MATRIX 1–8 bus. The method of operation and the meaning of the display are the same as for MATRIX in the MIX window (➔ p.19).



⑥ **BALANCE**

Adjusts the left/right balance of the STEREO channel.

⑦ **SEL (Select)**

Selects the channel for which you want to make settings. (You can specify L and R independently.) This is linked with the STEREO/MONO MASTER section [SEL] keys on the LS9's panel.

⑧ **CUE**

This button cue-monitors the signal of the STEREO/MONO channel. This is linked with the STEREO/MONO MASTER section [CUE] keys on the LS9's panel.

⑨ **ON**

This switches the STEREO/MONO channel on/off. This is linked with the STEREO/MONO MASTER section [ON] keys on the LS9's panel.

⑩ **Fader**

Adjusts the output level of the STEREO/MONO channel. This is linked with the STEREO/MONO MASTER section faders of the LS9's panel.

The current fader value is shown in the numeric box immediately below the fader.

The numbers and alphabetical letters at the right of the fader indicate the mute groups to which that channel belongs, and show the Recall Safe and Mute Safe status of the channel. (For the significance of the numbers and alphabetical letters, see ➔ p.19).

⑪ **Channel number**

This is the channel number (ST or M). You can double-click this number to open the Selected Channel window for this channel. If you hold down the <Ctrl>(<⌘>) key of your computer keyboard and double-click this, the Selected Channel window will open as an additional view.

⑫ **Channel name**

This text box shows the channel name. You can edit the channel name within this text box.

The background color will be the same as the background color of the icon in the channel select area of the Selected Channel window.

Custom Fader Layer window

The Custom Fader Layer allows you to create a freely selected combination of the LS9's internal channels for each user key. For details on operating each type of channel, refer to the Overview window for that channel.

NOTE In the initial state when the Editor has never been synchronized with the LS9 console, this window will show the Administrator settings. However when you synchronize, this window will be displayed according to the user level of the console.

Custom Fader Layer window



This window lets you view and edit the mix parameters for Custom Fader Layer CH 1–16 and 17–32^(*). The parameters shown in this window can be selected from the [View] menu or from the menu that appears when you right-click in the window.

You can display this window in either of the following ways.

- From the [Windows] menu, choose [Overview] and then choose “Custom Fader Layer (CH1-16)”/“Custom Fader Layer (CH17-32)”^(*)
- In the Master window, turn the Layer Keys CUSTOM [1-16] button/[17-32] button^(*) on

^(*) Custom Fader Layer CH 17-32 can be displayed only if you're editing offline and have selected LS9-32 in the Model Select field of the Mixer Setup window, or if you are editing online with the LS9-32 connected.

CH 1

Select the channels that you want to assign to the Custom Fader Layer (INPUT CH). You can also make these settings in the “Custom Fader Layer Setup window.”

Custom Fader Layer ST IN window



This window lets you view and edit the mix parameters for Custom Fader Layer ST IN CH 1–4^(*). The parameters shown in this window can be selected from the [View] menu or from the menu that appears when you right-click (<control> key + click) in the window.

You can display this window in either of the following ways.

- From the [Windows] menu, choose [Overview] and then choose “Custom Fader Layer ST IN”
- In the Master window, turn the Layer Keys STEREO IN [CUSTOM] button on

^(*) Custom Fader Layer ST IN 3/4 can be displayed only if you’re editing offline and have selected LS9-32 in the Model Select field of the Mixer Setup window, or if you’re editing online with the LS9-32 connected.

STIN1

Select the ST IN CH that you want to assign to the Custom Fader Layer (ST IN). You can also make these settings in the “Custom Fader Layer Setup window.”

Selected Channel window

Here you can set the parameters of the currently selected input channel (INPUT CH 1–64, ST IN CH 1–4) or output channel (MIX channels 1–16, MATRIX channels 1–8, STEREO/MONO channels).

You can access this window in the following ways.

- From the [Windows] menu, choose [Selected Channel] and select “MAIN VIEW”
- Double-click the channel number in one of the Overview windows
- On the LS9 console, assign a USER DEFINED KEY to [LS9 EDITOR CONTROL]-[SELECTED CHANNEL], and execute it

NOTE By choosing [Selected Channel] from the [Windows] menu and then selecting “ADDITIONAL VIEW,” you can view a window for a channel that is not selected. This ADDITIONAL VIEW is not linked with [SEL] key operations on the panel of the LS9.

The type of parameters that can be edited in this window depends on the type of the currently selected channel. The parameters of the Selected Channel window are explained below, in the order of input channels (input channels 1–64, ST IN CH 1–4), MIX channels, MATRIX channels, and STEREO/MONO channels.

If an input channel is selected

● INPUT CH window

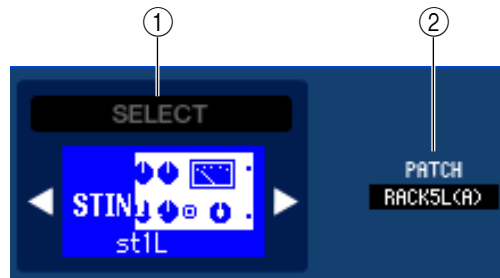


● ST IN CH window



NOTE Unless otherwise specified, the parameters explained below are common to INPUT CH 1–48 and ST IN CH 1–4.

□ CHANNEL SELECT (Channel selection)



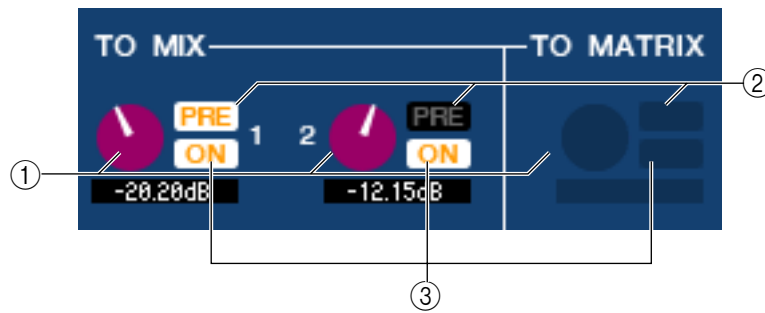
① **SELECT (Channel selection)**

This shows the ID and name of the channel selected for operations. To switch channels, use the SELECT button or the triangle buttons at left and right. The channel selected in the Main View is linked with the [SEL] keys in the INPUT section of the LS9's panel. You can right-click (<control> key + click) the icon and select a different icon, or left-click it and select the background color. You can also edit the channel name in the text box.

② **INPUT PATCH**

Selects the input source assigned to the input channel (for the selectable input sources, ➔ p.13).

□ MIX SEND



① MIX send level

This adjusts the send level of the signal sent from the input channel to VARI-type MIX bus. The current value is shown in the numerical box immediately below.

② PRE (Pre/Post)

This selects PRE or POST as the point from which the signal is sent from the input channel to the MIX bus. The point will be PRE POINT when this is on, and POST FADER when this is off. The PRE POINT setting can be specified in the Mixer Setup screen.

③ ON (MIX send on/off)

This is an on/off switch for the signal sent from the input channel to the MIX bus.

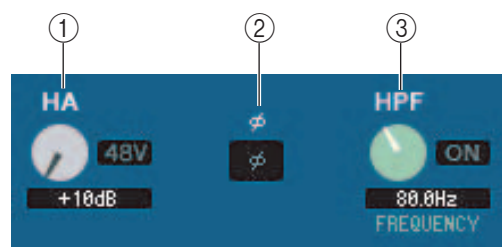
HINT

- If MIX buses are being used in stereo, the odd-numbered knob will be PAN.
- If the FIXED type is selected for the MIX bus, only the ON button is valid.
- The stereo/mono setting and the VARI type / FIXED type setting can be made in the Mixer Setup screen.

Knob of odd-numbered side



□ HA GAIN/Ø/HPF



① HA (HA Gain)

Adjusts the gain of the internal head amp or of the external head amp (AD8HR) patched to the input channel. The current value is shown in the numerical box below the knob. You can set this to the default value (+10 dB) by holding down the <Ctrl>(<⌘>) key and clicking the knob. You can also use the [48V] button to switch phantom power on/off.

② Ø (Phase)

Inverts the phase of the signal after AD conversion.

③ HPF (High Pass Filter)

Use the [ON] button at the right to switch the high-pass filter on/off. You can use the knob at left to adjust the cutoff frequency. The current value is shown in the numerical box below the knob. An indication of "H" will appear on the EQ graph of the equalizer.

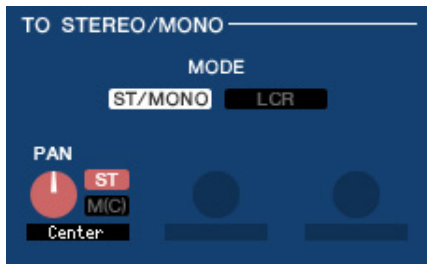
TO STEREO/MONO

Here you can specify how the signal will be sent from the input channel to the STEREO bus / MONO bus.

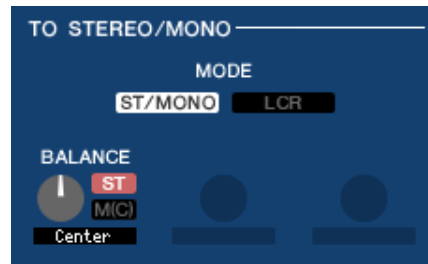
MODE

- **ST/MONO button**

When this button is on, the signal will be sent to the STEREO L/R bus and independently to the MONO bus.



[INPUT CH 1-48]

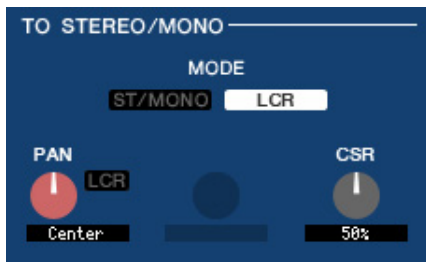


[ST IN CH 1-4]

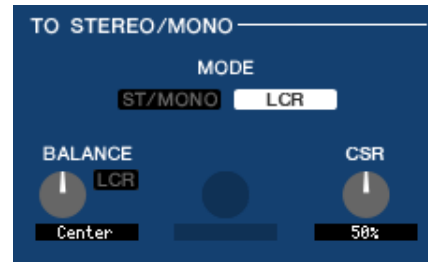
PAN (BALANCE for ST IN)	Adjusts the panning of the signal sent from the input channel to the STEREO bus L/R channels. You can set this to the center position by holding down the <Ctrl>(<⌘>) key of the computer keyboard and clicking the knob. This is linked with the [PAN] encoder in the SELECTED CHANNEL section of the LS9 panel.
ST	Switches the signal sent from the input channel to the STEREO bus on/off.
M(C)	Switches the signal sent from the input channel to the MONO bus on/off.

- **LCR button**

When this button is on, the signal will be sent to the L/C/R buses which work in conjunction with each other.



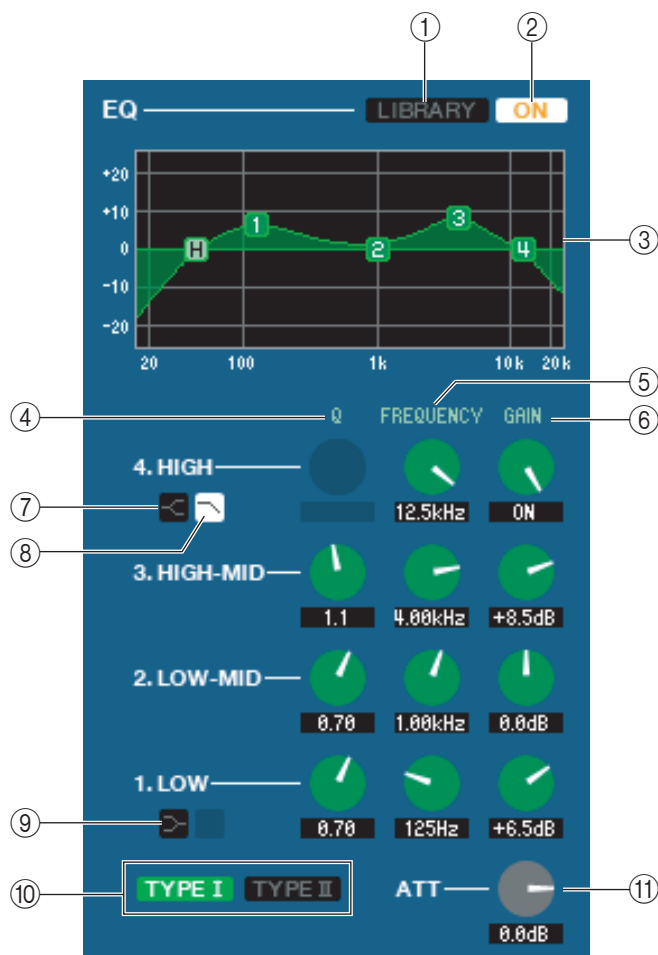
[INPUT CH 1-48]



[ST IN CH 1-4]

PAN (BALANCE for ST IN)	Adjusts the panning of the signal that is sent from the input channel to each of the L/C/R channels. You can set this to the center position by holding down the <Ctrl>(<⌘>) key of the computer keyboard and clicking the knob. This is linked with the [PAN] encoder in the SELECTED CHANNEL section of the LS9 panel.
LCR	Switches the signal sent from the input channel to the L/C/R bus on/off.
CSR (Center Side Ratio)	Adjusts the proportion of the CENTER channel level relative to the STEREO bus L/R in a range of 0-100%.

EQ



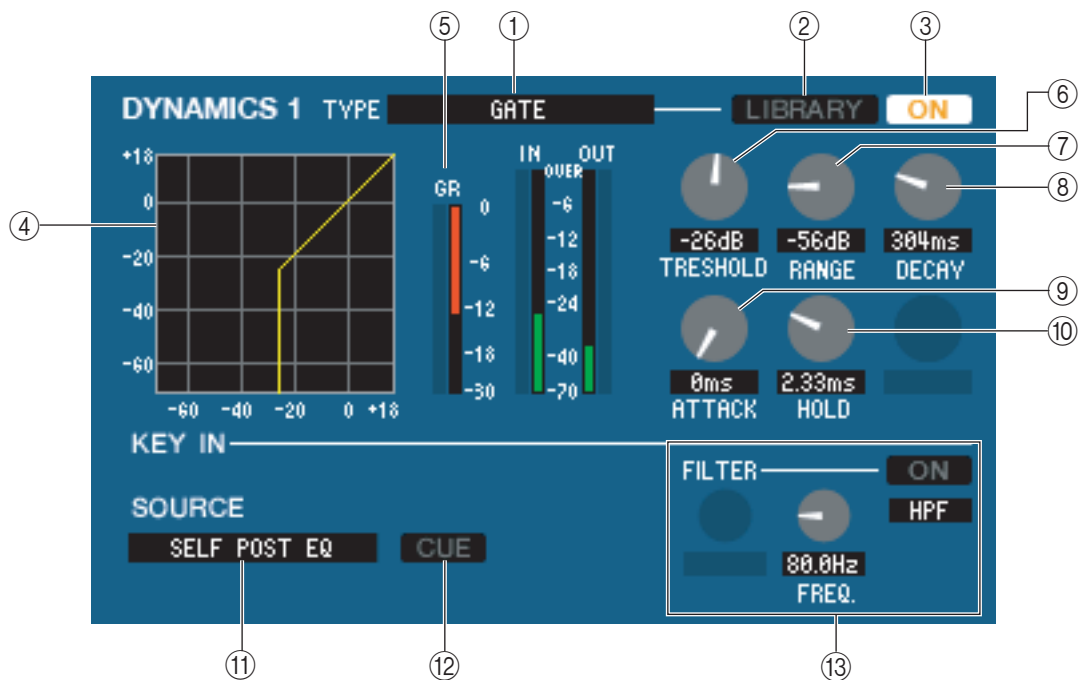
- ① **LIBRARY**
Accesses the INPUT EQ page of the LIBRARY window.
- ② **ON**
Switches the EQ on/off.
- ③ **EQ graph**
Indicates the response for the EQ of the currently selected channel. To reset the EQ to flat response, hold down the <Ctrl>(<⌘>) key of your computer keyboard and click the graph (The HPF setting will remain).
- ④ **Q**
- ⑤ **FREQUENCY**
- ⑥ **GAIN**
These knobs adjust the Q, center frequency, and boost/cut amount for the four bands LOW, LO-MID, HI-MID, and HIGH.
- ⑦ **HIGH shelving**
If this button is on, the HIGH EQ will be switched to a shelving type (the Q knob of the HIGH EQ will disappear).
- ⑧ **LPF (Low Pass Filter)**
If this button is on, the HIGH EQ will function as a low pass filter. The Q knob of the HIGH EQ will disappear, and the GAIN knob will act as the low pass filter on/off switch.
- ⑨ **LOW shelving**
If this button is on, the LOW EQ will be switched to a shelving type (the Q knob of the LOW EQ will disappear).
- ⑩ **TYPE I/TYPE II (EQ type)**
Selects either TYPE I (the same algorithm as on previous Yamaha digital mixers) or TYPE II (a newly developed algorithm) as the EQ type.
- ⑪ **ATT (Attenuation)**
Adjusts the amount of attenuation/gain.

□ DYNAMICS1/2

You can select one of the following types for each of the two dynamics processors.

DYNAMICS1:	GATE, DUCKING, EXPANDER, COMPRESSOR
DYNAMICS2:	COMPRESSOR, COMPANDER-H, COMPANDER-S, DE-ESSER

If GATE/DUCKING is selected



① TYPE

Indicates the type of the currently selected gate. You can click here to select the type.

② LIBRARY

This button accesses the dynamics library. Clicking this button will open the DYNAMICS page of the LIBRARY window.

③ ON

This button switches the gate on/off.

④ Response curve

Indicates the response for the gate of the currently selected channel.

⑤ GR meter

This meter indicates the amount of gain reduction.

⑥ THRESHOLD (Threshold level)

Specifies the level at which the gate will open and close. The gate will open when the key-in signal exceeds this level, and will close when the signal falls below this level.

⑦ RANGE

Specifies the amount by which the signal is attenuated while the gate is closed.

⑧ DECAY

Specifies the time over which the gate will close after the hold time has elapsed.

⑨ ATTACK

Specifies the time from when the key-in signal exceeds the threshold level until the gate opens.

⑩ HOLD

Specifies the time that the gate will remain open after the key-in signal falls below the threshold.

11 KEY IN SOURCE

Click this to select one of the following signals to use as the key-in source.

SELF PRE EQ	The pre-EQ signal of the currently selected input channel
SELF POST EQ	The post-EQ signal of the currently selected input channel
MIX OUT 13–16	The output signal of the corresponding MIX channel immediately before the output attenuation
CH 1–64 POST EQ	The post-EQ signal of the corresponding input channel (however, you can only choose channels belonging to the same group, within the nine groups CH1–8, CH9–16, CH17–24, CH25–32, CH33–40, CH41–48, CH49–56, CH57–64 and STIN1L–STIN4R).
STIN1L–STIN4R POST EQ	

12 CUE

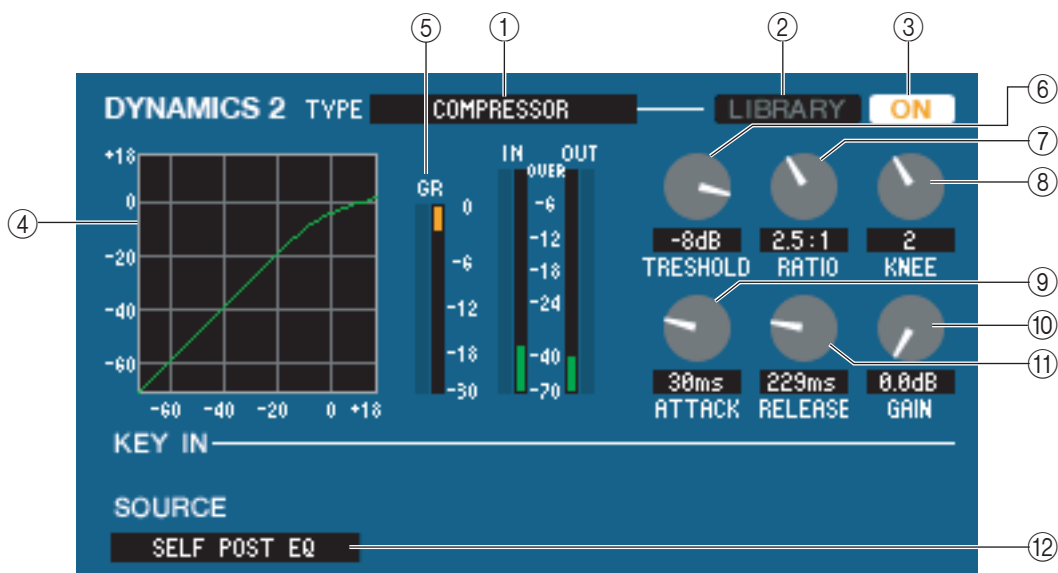
This button cue-monitors the currently selected key-in signal. This is not shown in the ADDITIONAL VIEW.

13 KEY IN FILTER

Select the type of filter applied to the selected key-in signal; HPF (high pass filter), BPF (band pass filter), or LPF (low pass filter). The ON/OFF button switches the filter on/off.

If you've selected BPF, use the two knobs to adjust the band pass frequency and Q. If you've selected HPF or LPF, use the knob to adjust the cutoff frequency.

If COMPRESSOR is selected



1 TYPE

Indicates the type of the currently selected compressor.

2 LIBRARY

This button accesses the dynamics library. Clicking this button will open the DYNAMICS page of the LIBRARY window.

3 ON

This button switches the compressor on/off.

4 Response curve

Indicates the response for the compressor of the currently selected channel.

5 GR meter

This meter indicates the amount of gain reduction produced by the compressor.

6 THRESHOLD

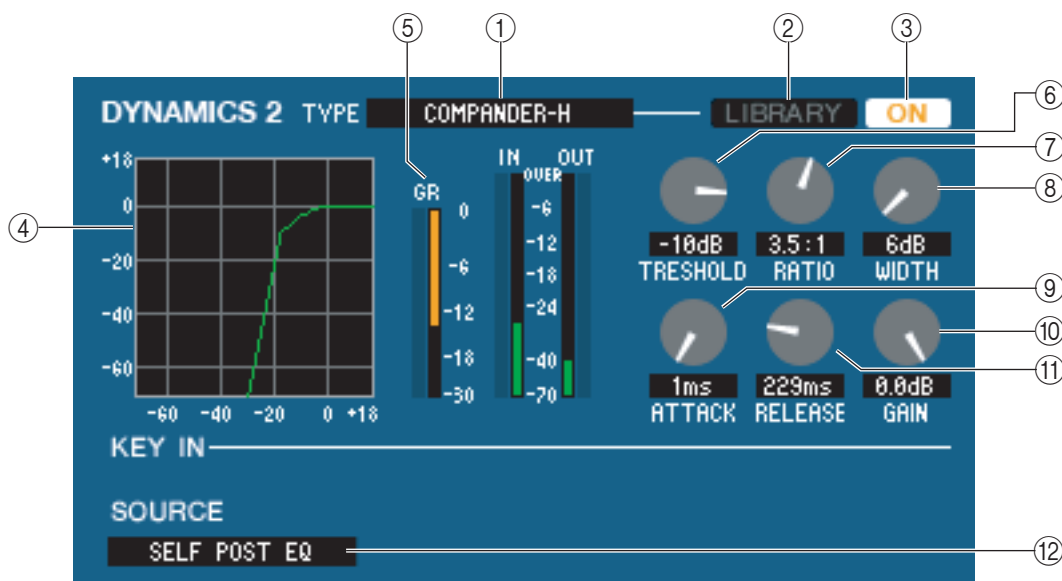
Specifies the threshold level at which the compressor will operate. The input signal will start being compressed when the key-in signal exceeds this level; compression will be removed when the signal falls below this level.

7 RATIO

Specifies the ratio at which the input signal will be compressed when the key-in signal exceeds the threshold.

- ⑧ **KNEE**
Specifies the sharpness at which the output level will change. You can select from HARD or 1–5.
- ⑨ **ATTACK**
Specifies the time from when the key-in signal exceeds the threshold level until the signal starts being compressed.
- ⑩ **GAIN**
Adjusts the gain of the signal after it has passed through the compressor.
- ⑪ **RELEASE**
Specifies the time from when the key-in signal falls below the threshold level until compression is removed.
- ⑫ **KEY IN SOURCE**
Click this to select the key-in signal that you want to use.
The choices are the same as for GATE.

If COMPANDER-H, COMPANDER-S is selected



- ① **TYPE**
Indicates the type of the currently selected compressor. You can click here to select the type.
- ② **LIBRARY**
This button accesses the dynamics library. Clicking this button will open the DYNAMICS page of the LIBRARY window.
- ③ **ON**
This button switches the compressor on/off.
- ④ **Response curve**
Indicates the response for the compander of the currently selected channel.
- ⑤ **GR meter**
This meter indicates the amount of gain reduction produced by the compressor.
- ⑥ **THRESHOLD**
Specifies the threshold level at which the compressor will operate. The input signal will start being compressed when the key-in signal exceeds this level; compression will be removed when the signal falls below this level.
- ⑦ **RATIO**
Specifies the ratio at which the input signal will be compressed when the key-in signal exceeds the threshold.
- ⑧ **WIDTH**
Specifies the width between the threshold level of the compressor (THRESHOLD) and the threshold level of the expander. The expander effect will apply to levels below THRESHOLD + WIDTH.

⑨ **ATTACK**

Specifies the time from when the key-in signal exceeds the threshold level until the signal starts being compressed.

⑩ **GAIN**

Adjusts the gain of the signal after it has passed through the compressor.

⑪ **RELEASE**

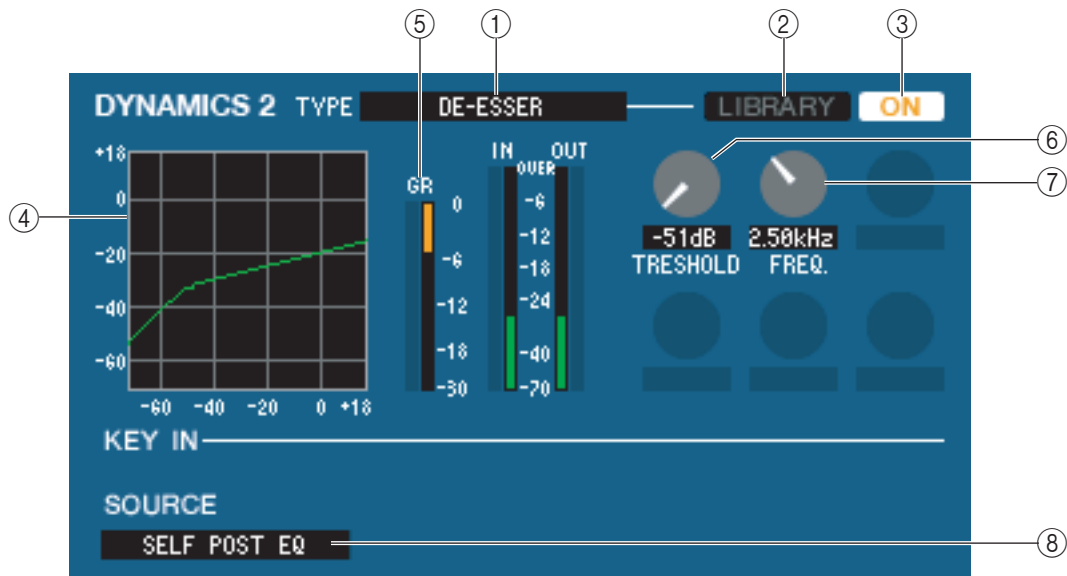
Specifies the time from when the key-in signal falls below the threshold level until compression is removed.

⑫ **KEY IN SOURCE**

Click this to select the key-in signal that you want to use.

The choices are the same as for GATE.

If DE-ESSER is selected



① **TYPE**

This indicates that De-Esser is the currently selected type.

② **LIBRARY**

This button accesses the dynamics library. Clicking this button will open the DYNAMICS page of the LIBRARY window.

③ **ON**

This button switches the de-esser on/off.

④ **Response curve**

Indicates the response for the de-esser of the currently selected channel.

⑤ **GR meter**

This meter indicates the amount of gain reduction produced by the de-esser.

⑥ **THRESHOLD**

Specifies the threshold level at which the de-esser will operate. The input signal will start being compressed when the key-in signal exceeds this level; compression will be removed when the signal falls below this level.

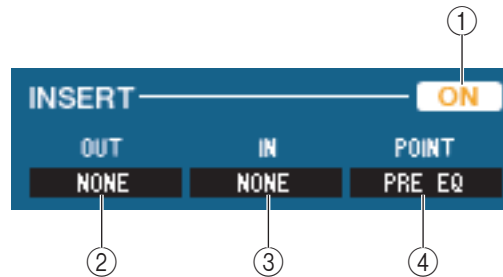
⑦ **FREQ. (Minimum frequency)**

Specifies the minimum frequency at which the key-in signal will activate the de-esser.

⑧ **KEY IN SOURCE**

This indicates the key-in signal that will be used. It is fixed at SELF POST EQ.

❑ INSERT (INPUT CH 1–32 only)



① ON

Enables/disables insert-in/out.

② OUT (Insert out)

Click this to select the output port that will be assigned to insert-out, from the following choices.

NONE	No assignment
SLOT1-1...SLOT1-16, SLOT2-1(*)...SLOT2-16(*)	Output channels of an I/O card installed in a slot
RACK1A, RACK1B...RACK5L(A)...RACK8R(B)	L/R inputs of Rack 1–8

(*) SLOT2 can be displayed only if you're editing offline and have selected LS9-32 in the Model Select field of the Mixer Setup window, or if you are editing online with the LS9-32 connected.

③ IN (Insert in)

Click this to select the input port that will be assigned to insert-in, from the following choices.

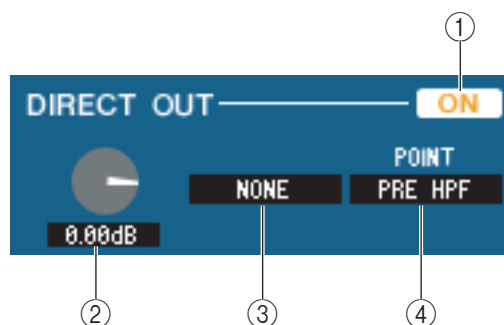
NONE	No assignment
SLOT1-1...SLOT1-16, SLOT2-1(*)...SLOT2-16(*)	Input channels of an I/O card installed in a slot
RACK1A, RACK1B...RACK5L(A)...RACK8R(B)	L/R outputs of Rack 1–8

(*) SLOT2 can be displayed only if you're editing offline and have selected LS9-32 in the Model Select field of the Mixer Setup window, or if you are editing online with the LS9-32 connected.

④ POINT (Insert point)

Selects the position at which insert-in/out will be patched. Choose from PRE EQ, PRE FADER, or POST ON.

❑ DIRECT OUT (except for ST IN CH)



① ON

Turns the direct output on/off.

② DIRECT OUT GAIN

Adjusts the gain of the direct output. The current value is shown in the numerical box below the knob. You can set this to the nominal value (0.0 dB) by holding down the <Ctrl>(<⌘>) key and clicking the knob.

③ DIRECT OUT PORT

Click this to select one of the following output ports as the one used for direct out.

NONE	No assignment
OMINI1–OMNI16(*)	OMNI jacks 1–16(*)
SLOT1-1...SLOT1-16, SLOT2-1(*)...SLOT2-16(*)	Output channels of an I/O card installed in a slot
2TR DOUT L, 2TR DOUT R	L/R channels of the 2 TR OUT DIGITAL jack

(*) OMNI jacks 9–16 and SLOT2 can be displayed only if you're editing offline and have selected LS9-32 in the Model Select field of the Mixer Setup window, or if you are editing online with the LS9-32 connected.

④ DIRECT OUT POINT

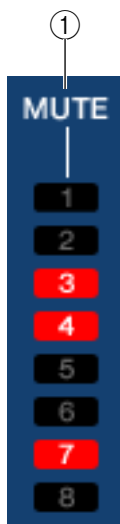
Select either PRE HPF, PRE EQ, or PRE FADER as the location at which direct out will be patched.

□ RECALL SAFE/MUTE SAFE

These enable/disable Recall Safe and Mute Safe for the channel.



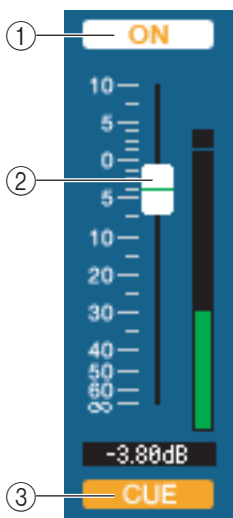
□ MUTE GROUP



① MUTE GROUP

Selects the mute group (1–8) to which that channel belongs.

□ Fader



① ON

Switches the input channel on/off. This is linked with the INPUT section CH [ON] keys on the LS9's panel.

② Fader

Adjusts the input level of the input channel. This is linked with the INPUT section faders of the LS9's panel. A meter indicating the signal level is shown at the right of the fader, and the current value is shown in the numerical box immediately below. You can set this to the minimum value ($-\infty$ dB) by holding down the <Ctrl>(<⌘>) key of your computer keyboard and clicking the fader knob, or set it to the nominal value (0.00 dB) by holding down the <Ctrl>(<⌘>) key and <Shift> key and clicking the fader knob.

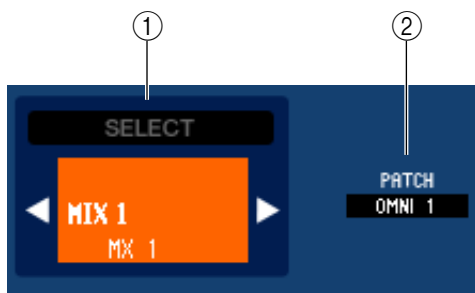
③ CUE

This button cue-monitors the signal of the input channel. This is linked with the INPUT section [CUE] keys on the LS9's panel.

If a MIX channel is selected



□ CHANNEL SELECT (Channel selection)



① SELECT (Channel selection)

Except for the fact that your editing applies to a MIX channel, this is the same as the channel selection for an input channel (➔ p.27).

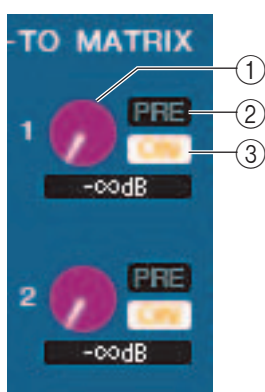
② OUTPUT PATCH

This selects the output port that will be assigned to the MIX channel. (For the output ports that can be selected (➔ p.18).

If multiple patches have been made, only the first port is shown.

If you change the patching in this window, the port that had been assigned until then will be cancelled, and only the newly selected port will be assigned.

□ TO MATRIX



① MATRIX send level

This adjusts the send level of the signal sent from the MIX channel to the MATRIX buses.

② ON (MATRIX send on/off)

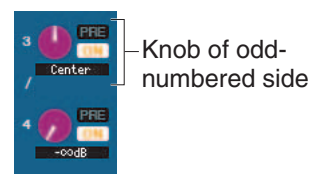
This is an on/off switch for the signal sent from the MIX channel to the MATRIX bus.

③ POINT (Send point)

Select either PRE or POST as the position from which the signal is sent from the MIX channel to the MATRIX bus. PRE POINT is selected if this is on, or POST FADER is selected if this is off. The PRE POINT setting can be made in the Mixer Setup screen.

HINT

- If you are using MATRIX buses in stereo, the knob for the odd-numbered bus will be PAN.
- The stereo/mono status can be specified in the Mixer Setup screen.



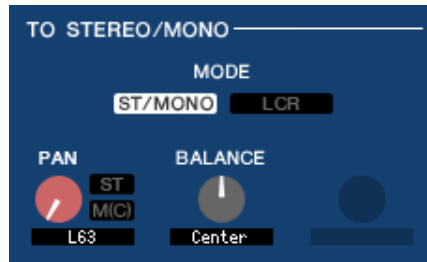
TO STEREO/MONO

Here you can specify how the signal will be sent from the MIX channel to the STEREO bus / MONO bus.

MODE

- **ST/MONO button**

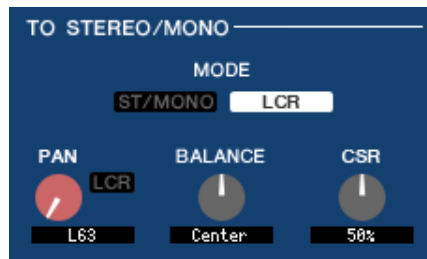
When this button is on, the signal will be sent to the STEREO bus and independently to the MONO bus.



PAN	Adjusts the panning of the signal sent from the MIX channel to the STEREO bus L/R channels. You can set this to the center position by holding down the <Ctrl>(<⌘>) key of the computer keyboard and clicking the knob. This is linked with the [PAN] encoder in the SELECTED CHANNEL section of the LS9 panel. If the selected MIX bus is used as a stereo bus, the odd-numbered channel is fixed at L63 and the even-numbered channel fixed at R63.
ST	Switches the signal sent from the MIX channel to the STEREO bus on/off.
MONO	Switches the signal sent from the MIX channel to the MONO bus on/off.
BALANCE	This is shown only if the selected MIX bus is assigned as a stereo bus. It adjusts the left/right volume balance of the stereo bus. You can set this to the center position by holding down the <Ctrl>(<⌘>) key of the computer keyboard and clicking the knob.

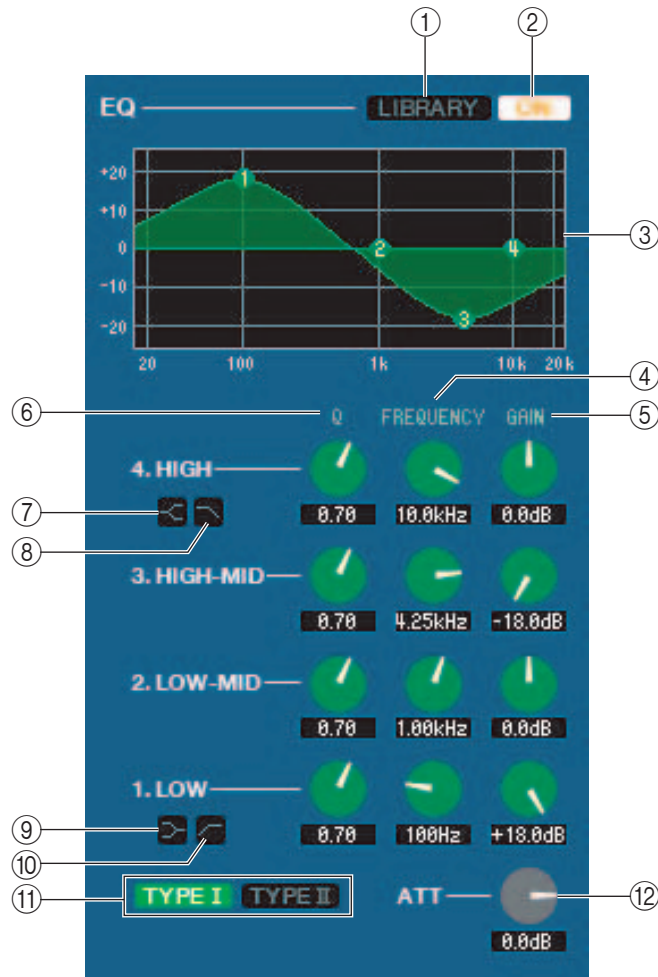
- **LCR button**

When this button is on, the signal will be sent to the L/C/R buses which work in conjunction with each other.



PAN	Adjusts the panning of the signal that is sent from the MIX channel to each of the L/C/R channels. You can set this to the center position by holding down the <Ctrl>(<⌘>) key of the computer keyboard and clicking the knob. This is linked with the [PAN] encoder in the SELECTED CHANNEL section of the LS9 panel. If the selected MIX bus is used as a stereo bus, the odd-numbered channel is fixed at L63 and the even-numbered channel fixed at R63.
BALANCE	This is shown only if the selected MIX bus is assigned as a stereo bus. It adjusts the left/right volume balance of the stereo bus. You can set this to the center position by holding down the <Ctrl>(<⌘>) key of the computer keyboard and clicking the knob.
CSR (Center Side Ratio)	Adjusts the proportion of the CENTER channel level relative to the STEREO bus L/R in a range of 0–100%.

□ EQUALIZER



- ① **LIBRARY**
Accesses the OUTPUT EQ page of the LIBRARY window.
- ② **ON**
Switches the EQ on/off.
- ③ **EQ graph**
Indicates the response for the EQ of the currently selected channel. To reset the EQ to flat response, hold down the <Ctrl>(<⌘>) key of your computer keyboard and click the graph.
- ④ **Q**
- ⑤ **FREQUENCY**
- ⑥ **GAIN**
These knobs adjust the Q, center frequency, and boost/cut amount for the four bands LOW, LO-MID, HI-MID, and HIGH.
- ⑦ **HIGH shelving**
If this button is on, the HIGH EQ will be switched to a shelving type (the Q knob of the HIGH EQ will disappear).
- ⑧ **LPF (Low Pass Filter)**
If this button is on, the HIGH EQ will function as a low pass filter. The Q knob of the HIGH EQ will disappear, and the GAIN knob will act as the low pass filter on/off switch.
- ⑨ **LOW shelving**
If this button is on, the LOW EQ will be switched to a shelving type (the Q knob of the LOW EQ will disappear).
- ⑩ **HPF (High Pass Filter)**
If this button is on, the LOW EQ will function as a high pass filter EQ. The Q knob of the LOW EQ will disappear, and the GAIN knob will act as the high pass filter on/off switch.
- ⑪ **TYPE I/TYPE II (EQ type)**
Selects either TYPE I (the algorithm used by previous digital mixers) or TYPE II (a newly developed algorithm) as the EQ type.
- ⑫ **ATT (Attenuation)**
Adjusts the amount of attenuation/gain.

□ DYNAMICS1

Except for the fact that the available types are COMPRESSOR, EXPANDER, COMPAND H and COMPAND S, and that you can select more than one signal as the key-in signal, this is the same as the dynamics for input channels (➔ p.32).

□ INSERT

Except for the fact that the insert points that can be selected are different, this is the same as for the insert settings of an input channel (➔ p.35).

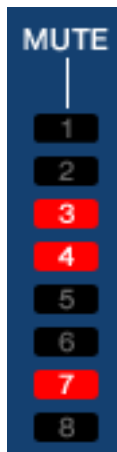
□ RECALL SAFE/MUTE SAFE

These are the same as the Recall Safe and Mute Safe functions for input channels.

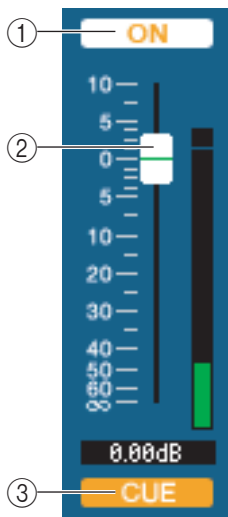


□ MUTE GROUP

Selects the mute group (1–8) to which the MIX channel belongs.



□ Pan/Fader



① ON

Switches the MIX channel on/off.

② Fader

Adjusts the output level of the MIX channel. A meter indicating the signal level is shown at the right of the fader, and the current value is shown in the numerical box immediately below. You can set this to the minimum value ($-\infty$ dB) by holding down the <Ctrl>(<⌘>) key of your computer keyboard and clicking the fader knob, or set it to the nominal value (0.00 dB) by holding down the <Ctrl>(<⌘>) key and <Shift> key and clicking the fader knob.

③ CUE

This button cue-monitors the signal of the MIX channel.

If a MATRIX channel is selected



CHANNEL SELECT (Channel selection)

Except for the fact that your editing applies to a MATRIX channel, this is the same as the channel selection for a MIX channel (➔ p.37).

FROM MIX, ST/MONO

① FROM MIX, ST/MONO send level

These adjust the send levels of the signals sent from the VARI type MIX buses or STEREO/MONO buses to the MATRIX bus. The current value is shown in the numerical box immediately below.

• PRE/POST

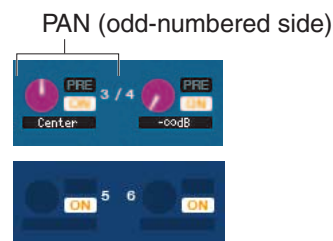
These select either PRE or POST as the position from which the signal is sent from the MIX buses or STEREO/MONO buses to the MATRIX bus. PRE POINT is selected if this is on, or POST FADER is selected if this is off.

② ON(FROM MIX, ST/MONO send on/off)

These are on/off switches for the signal sent from the MIX buses or STEREO/MONO buses to the MATRIX bus.

HINT

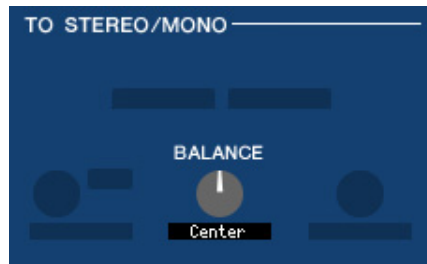
• If MIX buses and MATRIX buses are being used in stereo, the odd-numbered knob will be PAN.



• If the FIXED type is selected for the MIX bus, only the ON button is valid.

• The stereo/mono setting and the VARI type / FIXED type setting can be made in the Mixer Setup screen.

□ BALANCE



This is shown only if the selected MATRIX bus is being used as stereo. It adjusts the left/right volume balance of the stereo signal. You can set this to the center value by holding down the <Ctrl>(<⌘>) key of your computer keyboard and clicking this knob.

□ EQUALIZER

This is the same as for the equalizer of a MIX channel (➔ p.39).

□ DYNAMICS1

Except for the fact that the available types are COMPRESSOR, EXPANDER, COMPAND H and COMPAND S, and that you can select more than one signal as the key-in signal, this is the same as the dynamics for input channels (➔ p.31).

□ INSERT

Except for the fact that the insert points that can be selected are different, this is the same as for the insert settings of an input channel (➔ p.35).

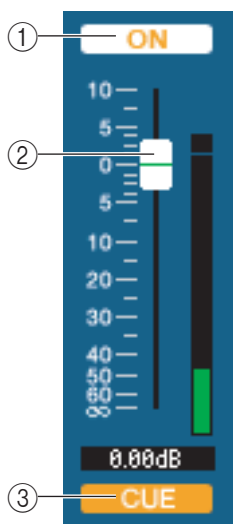
□ RECALL SAFE/MUTE SAFE

These are the same as the RECALL SAFE/MUTE SAFE of a MIX channel (➔ p.40).

□ MUTE GROUP

These are the same as the MUTE GROUP of a MIX channel (➔ p.40).

□ Fader



① ON

This switches the MATRIX channel on/off.

② Fader

This adjusts the output level of the MATRIX channel. A meter indicating the signal level is shown at the right of the fader, and the current value is shown in the numerical box immediately below. You can set this to the minimum value ($-\infty$ dB) by holding down the <Ctrl>(<⌘>) key of your computer keyboard and clicking the fader knob, or set it to the nominal value (0.00 dB) by holding down the <Ctrl>(<⌘>) key and <Shift> key and clicking the fader knob.

③ CUE

This button cue-monitors the signal of the MATRIX channel.

If a STEREO/MONO channel is selected

● STEREO channel window



● MONO channel window



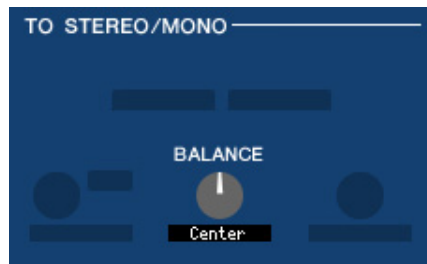
□ CHANNEL SELECT (Channel selection)

Except for the fact that your editing applies to a STEREO/MONO channel, this is the same as the channel selection for a MIX channel (➔ p.37).

TO MATRIX

These are the same as the TO MATRIX of a MIX channel (➔ p.37).

BALANCE (except for MONO channel)



This adjusts the left/right volume balance in the STEREO bus. You can set this to the center value by holding down the <Ctrl>(<⌘>) key of your computer keyboard and clicking this knob.

EQUALIZER

This is the same as the equalizer settings of a MIX channel (➔ p.39).

DYNAMICS1

Except for the fact that the available types are COMPRESSOR, EXPANDER, COMPAND H and COMPAND S, and that you can select more than one signal as the key-in signal, this is the same as the dynamics for input channels (➔ p.31).

INSERT

Except for the fact that the insert points that can be selected are different, this is the same as for the insert settings of an input channel (➔ p.35).

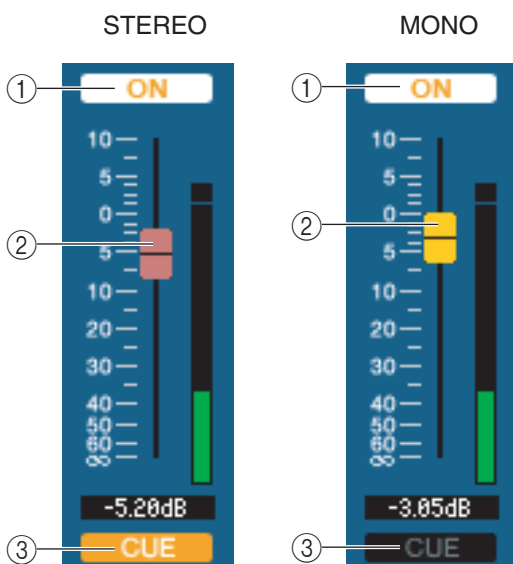
RECALL SAFE/MUTE SAFE

These are the same as the RECALL SAFE/MUTE SAFE of a MIX channel (➔ p.40).

MUTE GROUP

These are the same as the MUTE GROUP of a MIX channel (➔ p.40).

Fader



① ON

This switches the STEREO/MONO channel on/off. This is linked with the STEREO/MONO MASTER section [ON] keys on the LS9's panel.

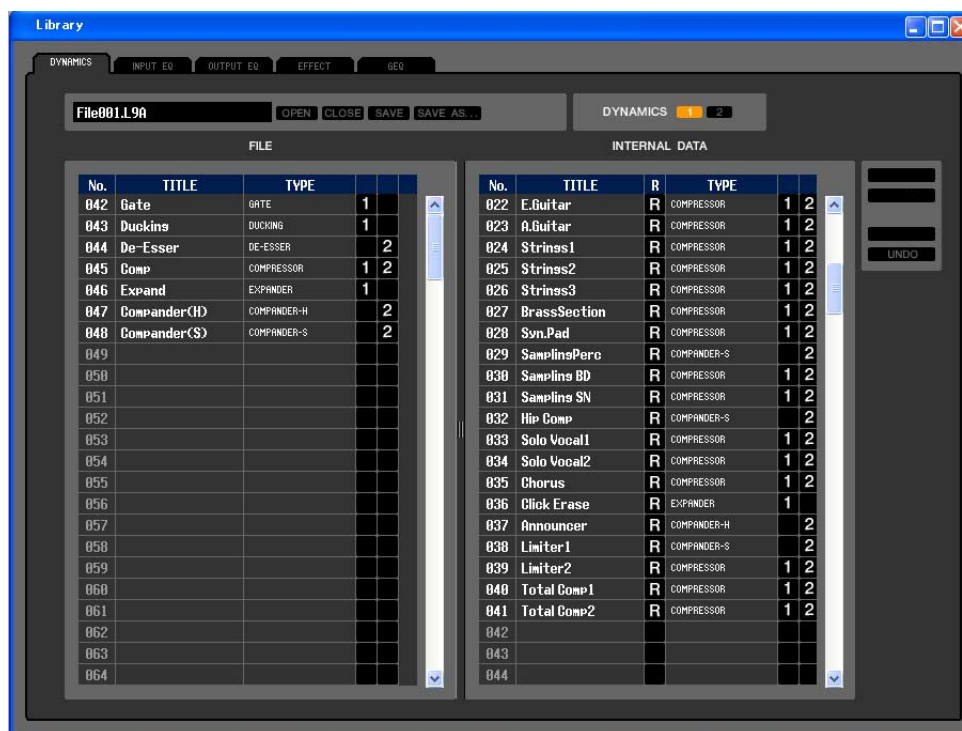
② Fader

Adjusts the output level of the STEREO/MONO channel. This is linked with the STEREO/MONO MASTER section faders of the LS9's panel. A meter indicating the signal level is shown at the right of the fader, and the current value is shown in the numerical box immediately below.

③ CUE

This button cue-monitors the signal of the STEREO/MONO channel. This is linked with the STEREO/MONO MASTER section [CUE] keys on the LS9's panel.

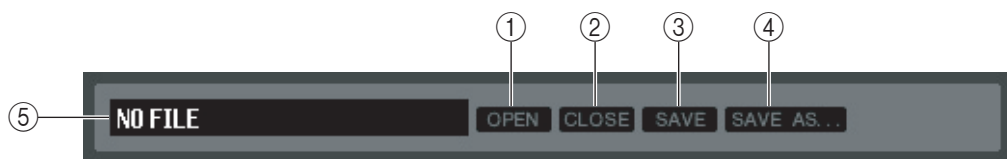
Library window



Here you can edit the LS9's various libraries. You can also load library files that were saved on a drive of your computer, edit the order or title of library items, recall the desired library data, or copy desired library data to a library within the LS9.

This window is divided into DYNAMICS, INPUT EQ, OUTPUT EQ, EFFECT, and GEQ pages; to switch pages, click the tabs located at the top of the window.

To display this window, choose [LIBRARY] from the [Windows] menu, and select either "DYNAMICS," "INPUT EQ," "OUTPUT EQ," "EFFECT," or "GEQ."



① OPEN (Open a file)

Opens a library file located on a drive of your computer. Use this when you want to edit library data that you've saved on a USB storage device.

② CLOSE (Close a file)

Closes the currently-open library file.

③ SAVE

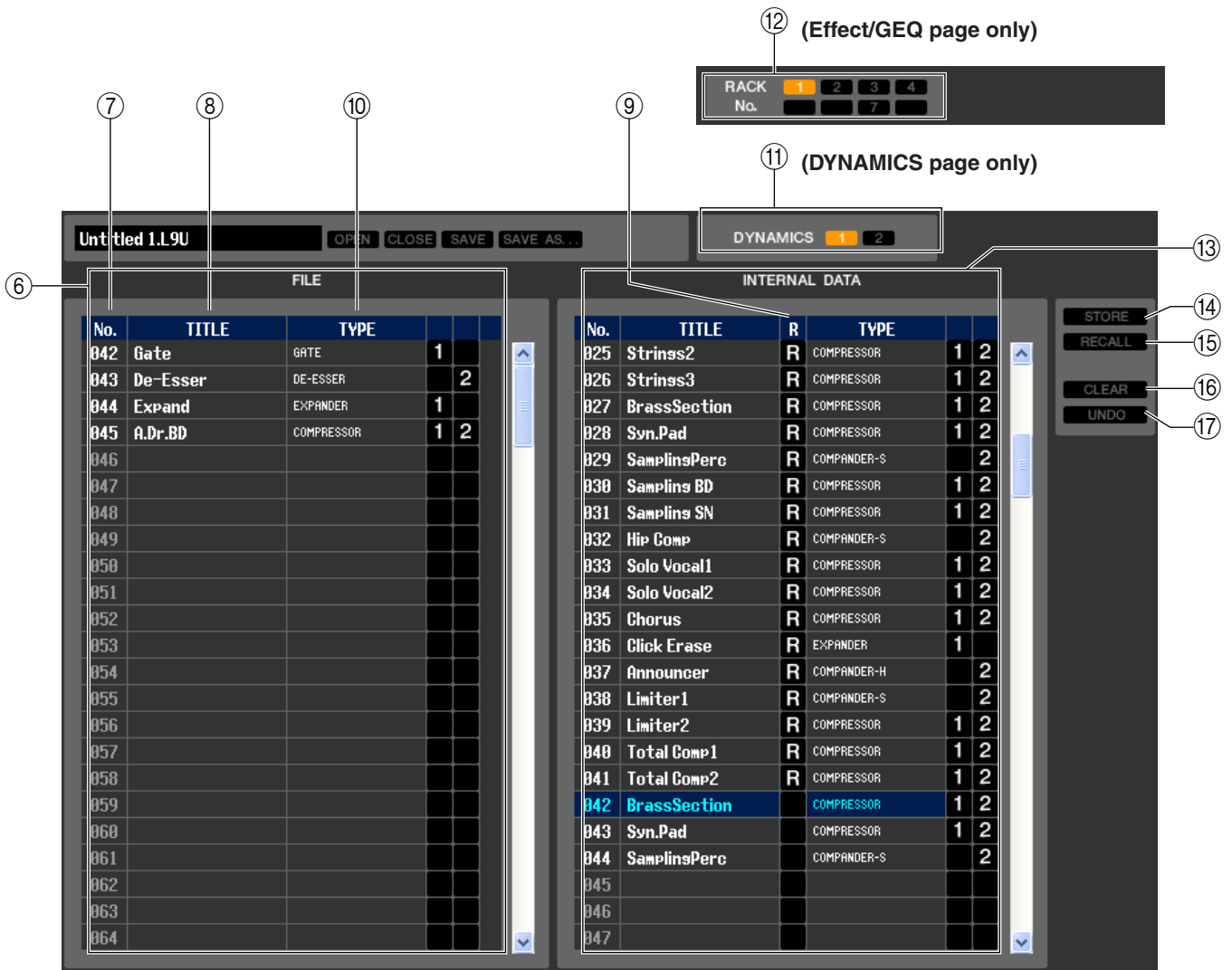
Saves the currently-open library file on a drive of your computer. Use this to re-save an edited library on a USB storage device, or to create a backup on the hard disk of your computer.

④ SAVE AS (Save under a different name)

Saves the currently-open library file under a different name on a drive of your computer.

⑤ File name

Indicates the file name of the currently-open library.



⑥ FILE

This list shows the contents of the data in the library file you opened using the OPEN button (①). The list includes the following items.

⑦ No. (Number)

This column indicates the number of each item in the library.

⑧ TITLE

This column indicates the title assigned to each library item. You can also double-click this area and edit the title.

⑨ READ ONLY

Read-only data is indicated by an “R” in this column. It cannot be overwritten, nor can its title be edited.

⑩ TYPE

This column indicates the effect type.

In the case of dynamics, there is also an indication of the dynamics processor(s) of this channel into which each library item can be recalled. Only library items with an indication of “1” can be recalled to DYNAMICS 1, and only library items with an indication of “2” can be recalled to DYNAMICS 2. Data for which neither “1” or “2” is shown cannot be recalled to that channel.

For EQ, this indicates TYPEI or TYPEII.

⑪ DYNAMICS (DYNAMICS page only)

Select which of the two dynamics processors will be subject to the Store or Recall operation.

⑫ RACK No. (Rack selection) (Effect/GEQ page only)

Select which rack will be subject to the Store or Recall operation.

NOTE HQ Pitch and Freeze cannot be recalled to an effect module mounted in Rack 6 or Rack 8.

⑬ INTERNAL DATA

This area shows the LS9’s scene memory contents. The items displayed are the same as in the FILE list (⑥).

As desired, you can copy single or multiple data between the FILE list and the INTERNAL DATA list, and copy or move them to a different location within a list.

To do this, use the following methods to select the data that you want to copy or move.

- **To select the single data**

Click the line containing the desired data.

040	Total Comp1	R	COMPRESSOR
041	Total Comp2	R	COMPRESSOR
042	Gate		GATE
043	Duckins		DUCKING
044	A.Dr.BD		GATE
045	A.Dr.SN		GATE
046	De-Esser		DE-ESSER

- **To select multiple consecutive data**

Click the first data to select it; then hold down the <Shift> key and click the last data.

040	Total Comp1	R	COMPRESSOR
041	Total Comp2	R	COMPRESSOR
042	Gate		GATE
043	Duckins		DUCKING
044	A.Dr.BD		GATE
045	A.Dr.SN		GATE
046	De-Esser		DE-ESSER

- **To select multiple non-consecutive data**

Click the first data; then hold down the <Ctrl>(<⌘>) key and click each of the remaining data.

040	Total Comp1	R	COMPRESSOR
041	Total Comp2	R	COMPRESSOR
042	Gate		GATE
043	Duckins		DUCKING
044	A.Dr.BD		GATE
045	A.Dr.SN		GATE
046	De-Esser		DE-ESSER

When you have selected the data that you want to move or copy, drag them to the desired location in the other list (if you're copying between lists) or in the same list (if you're copying/moving within the same list).

- **To copy data (overwriting the destination)**

Drag the copy-source data to the desired line in the other list or to another line in the same list. At this time, a ► symbol will appear at the right of the data number.

When you drop the data in this state, a dialog box will appear, asking you to confirm the Save operation. If you click the OK button, the copy-source data will be overwritten onto the copy-destination data, and the copy-source data will remain unchanged. (If the copy-source selection contains multiple data, the data will be overwritten onto consecutive data starting at that data.)

040	Total Comp1	R	COMPRESSOR
041	Total Comp2	R	COMPRESSOR
042	Gate		GATE
043	Duckins		DUCKING
044	A.Dr.BD		GATE
045	A.Dr.SN		GATE
046	De-Esser		DE-ESSER

- **To move data**

Within the same list, you can move the selected data to another location to rearrange the order of the data in the list. To do this, drag the selected data to a location between two other lines in the same list. At this time, a >— symbol will appear between the lines.

When you release the mouse button in this state, the selected data will move to that location, and the data numbers will also change accordingly. (If the move-source selection contains multiple data, those data will be inserted consecutively at the location you specify.)

040	Total Comp1	R	COMPRESSOR
041	Total Comp2	R	COMPRESSOR
042	Gate		GATE
043	Duckins		DUCKING
044	A.Dr.BD		GATE
045	A.Dr.SN		GATE
046	De-Esser		DE-ESSER

NOTE

- You cannot copy the InitialData of the GEQ library.
- Read-only data cannot be moved.

14 **STORE**

Stores the current settings to the data item that is selected in the list.

15 **RECALL**

Recalls the data item that is selected in the list.

16 **CLEAR**

Clears the data item(s) selected in the list. (when data is deleted, the title field will be blank)

17 **UNDO**

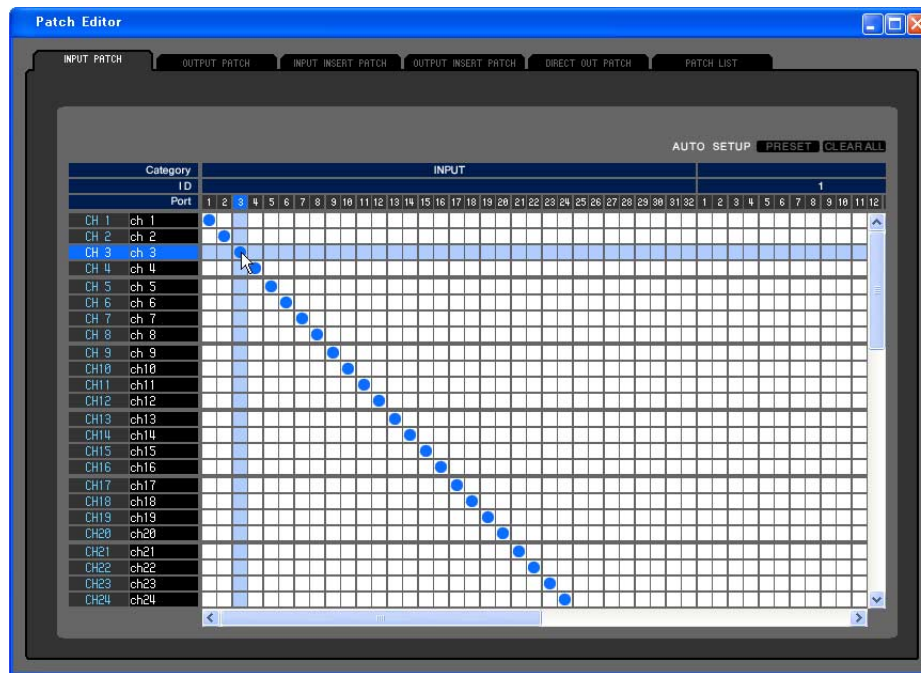
Cancels the last-performed library recall, store, copy, or move operation. You can click this repeatedly to repeat Undo and Redo.

Patch Editor window

Here you can assign the input/output port for each channel, its direct output, and its insert-in/out.

This window is divided into INPUT PATCH, OUTPUT PATCH, INPUT INSERT PATCH, OUTPUT INSERT PATCH, DIRECT OUT PATCH, and PATCH LIST pages. To switch pages, click the tabs shown in the upper part of the window. To display this window, choose [PATCH Editor] from the [Windows] menu, and select either “INPUT PATCH,” “OUTPUT PATCH,” “INPUT INSERT PATCH,” “OUTPUT INSERT PATCH,” “DIRECT OUT PATCH,” or “PATCH LIST.”

INPUT PATCH page



Here you can select the input port that is assigned to the input of each input channel.

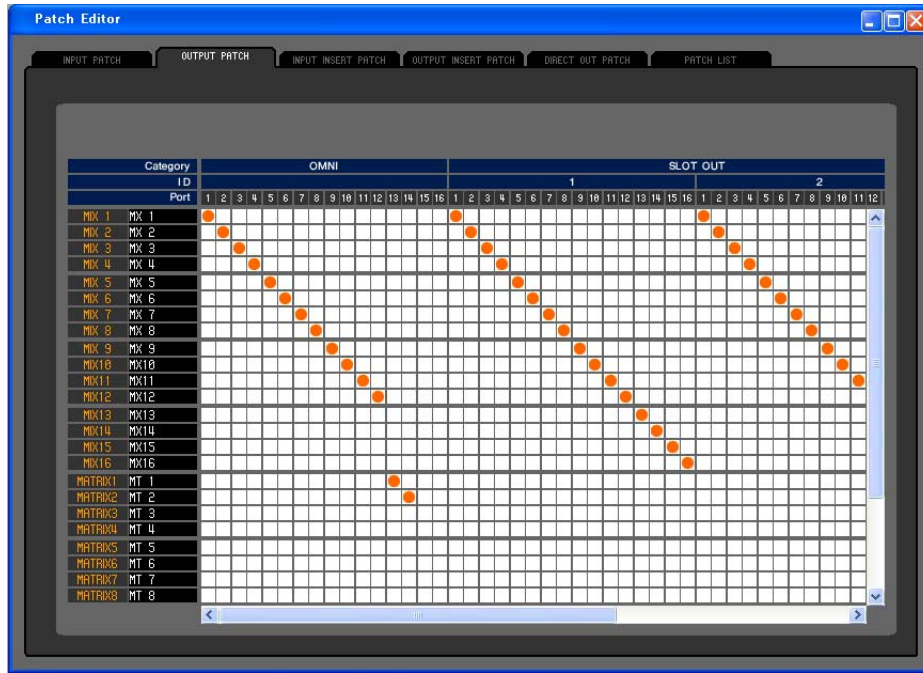
PRESET

Initializes the patching in this page.

CLEAR ALL

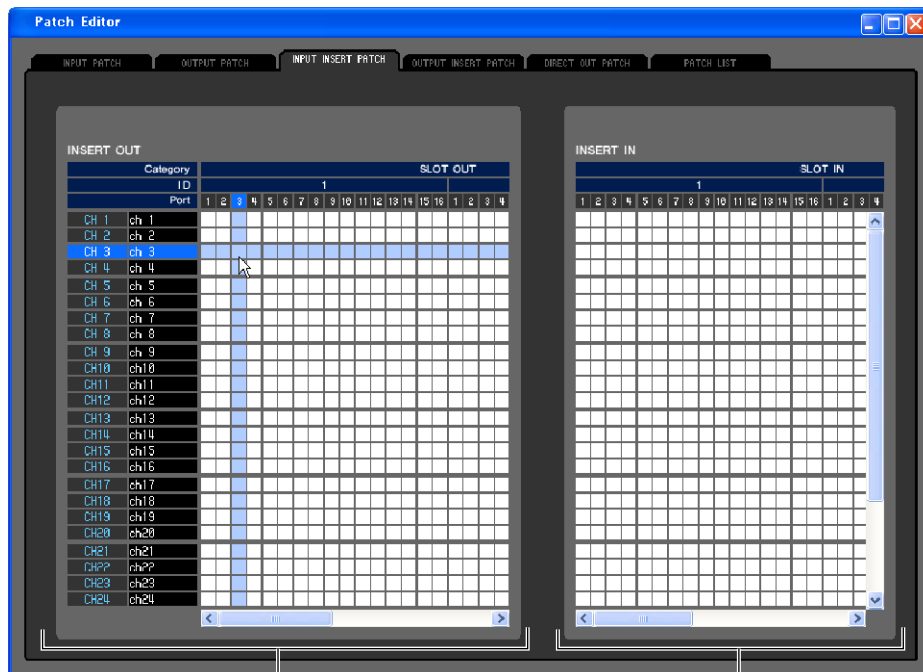
Clears all patching in this page.

OUTPUT PATCH page



Here you can select the input port that is assigned to the output of each output channel.

INPUT INSERT PATCH page

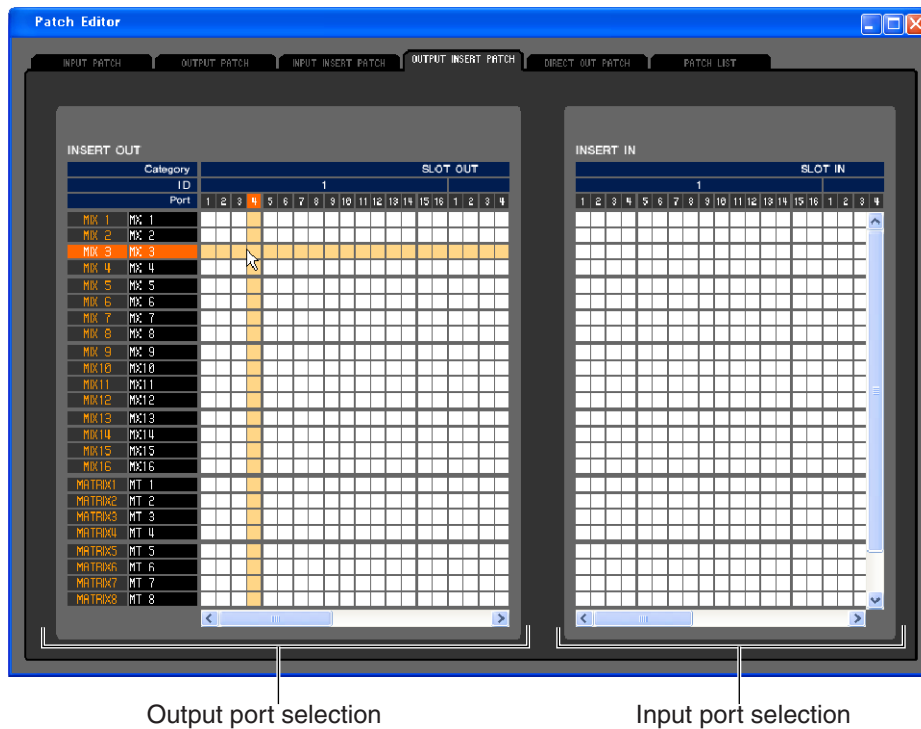


Output port selection

Input port selection

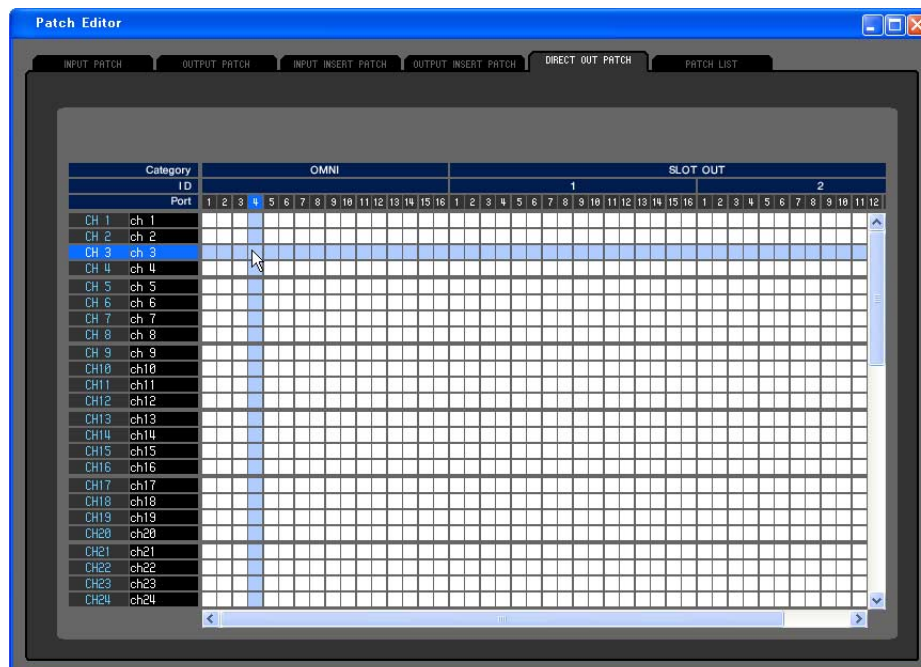
Here you can assign input/output ports to the insert-in/out of each input channel. Select the output port in the left side of the screen, and the input port in the right side of the screen.

OUTPUT INSERT PATCH page



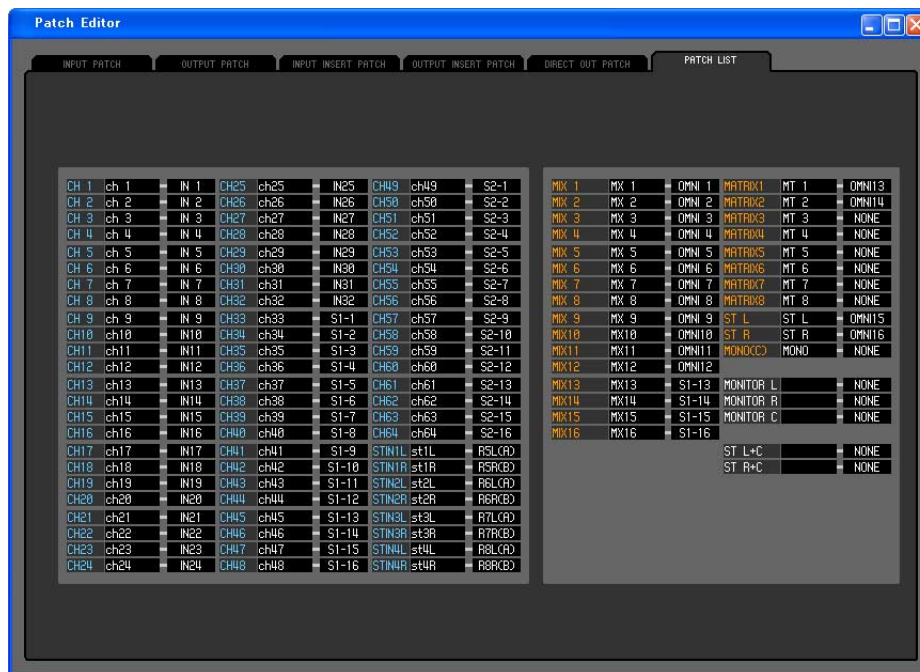
Here you can assign input/output ports to the insert-in/out of each output channel. Select the output port in the left side of the screen, and the input port in the right side of the screen.

DIRECT OUTPUT PATCH page



Here you can select the output port that will directly output each input channel.

PATCH LIST page



Here you can view and edit the input patch and output patch settings.

CH 1	ch 1	IN 1	CH25	ch25	IN25	CH49	ch49	NONE	MIX 1	MX 1	OMNI 1	MATRIX1	MT 1	NONE
CH 2	ch 2	IN 2	CH26	ch26	IN26	CH50	ch50	NONE	MIX 2	MX 2	OMNI 2	MATRIX2	MT 2	NONE
CH 3	ch 3	IN 3	CH27	ch27	IN27	CH51	ch51	NONE	MIX 3	MX 3	OMNI 3	MATRIX3	MT 3	NONE
CH 4	ch 4	IN 4	CH28	ch28	IN28	CH52	ch52	NONE	MIX 4	MX 4	OMNI 4	MATRIX4	MT 4	NONE

①

②

③

④

⑤

⑥

① Input channel number

② Input channel name

This is the number and name of the input channel. You can click the channel name box to edit the name in this page.

③ Input port

This shows the input port assigned to the input channel. You can click this box and choose the input port from the popup menu that appears.

④ Output channel number

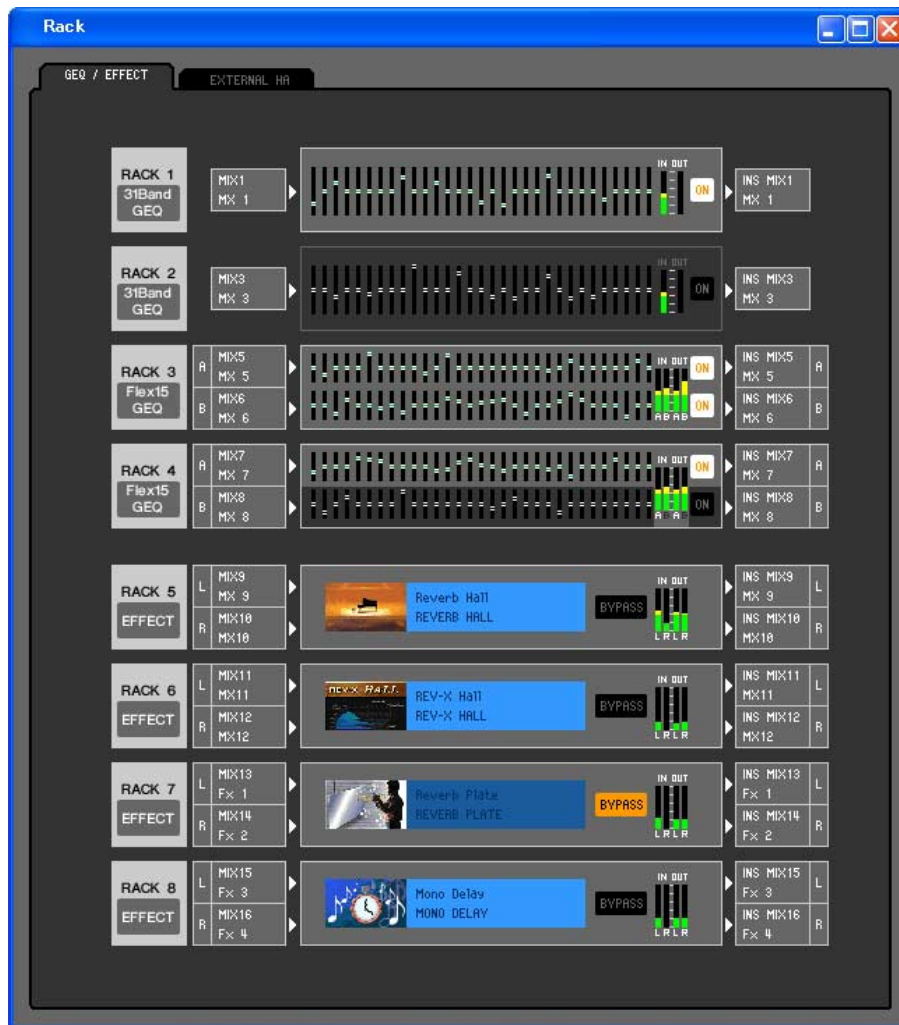
⑤ Output channel name

This is the number and name of the output channel. You can click the channel name box to edit the name in this page.

⑥ Output port

This shows the output port assigned to the output channel. You can click this box and choose the output port from the popup menu that appears.

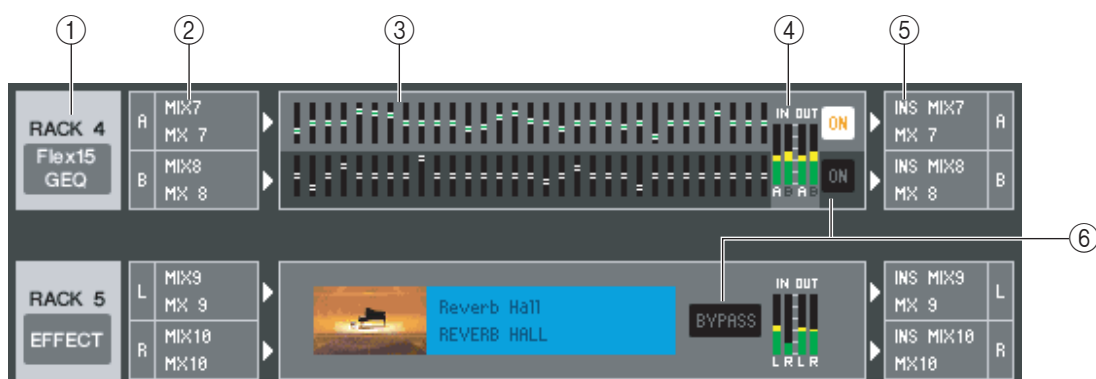
Rack window



Here you can make settings for GEQ, effects, and external head amps.

This window is divided into GEQ/EFFECT and EXTERNAL HA pages; to switch pages, click the tabs located at the top of the window.

GEQ/EFFECT page



① Mount

Select a GEQ module or effect module for mounting in the rack, from the following choices.

BLANK	No assignment
31 Band GEQ	31-band 1-in/1-out graphic equalizer
Flex15GEQ	2-in/2-out graphic equalizer that allows any fifteen of the 31 bands to be controlled
EFFECT	Internal effect (only for RACK 5–8)

② Input patch

Select the input port(s) that will be assigned to the rack, from the following choices.

NONE	No assignment
MIX1–16(*)	MIX channel 1–16
MATRIX1–8(*)	MATRIX channel 1–8
ST L, ST R, MONO(C) (*)	STEREO channel L/R, MONO channel
INS CH 1–32	INPUT CH 1–32 insert out
INS MIX 1–16	MIX channel 1–16 insert out
INS MATRIX1–8	MATRIX channel 1–8 insert out
INS ST L, INS ST R, INS MONO(C)	Insert-out of STEREO channel L/R or the MONO channel

(*) Selectable only for effect modules.

This is not shown if nothing is mounted in the rack.

③ Module graphic

This area shows a graphic of the GEQ module or effect module that is currently assigned to the rack, and the parameters of that module. You cannot edit the parameters in this screen.

Double-click this to open the module editor for that rack unit.

By holding down the <Ctrl>(<⌘>) key of your computer keyboard and double-clicking this, you can open multiple rack module editors. For these additional editors, the rack select buttons are not linked with the RACK popup window of the LS9-32 itself.

④ Input meter/Output meter

These indicate the level of the signals being input and output from the rack.

⑤ Output patch

Select the output port(s) that will be assigned to the rack, from the following choices.

NONE	No assignment
IN CH 1–64(*)(*2)	INPUT jacks 1–64 (*1)
STIN1L-STIN4R(*2)	L/R channels of ST IN jacks 1–4
INS CH 1–32	INPUT CH 1–32 insert in
INS MIX 1–16	MIX channel 1–16 insert in
INS MTRX1–INS MTRX8	MATRIX channel 1–8 insert in
INS ST L, INS ST R, INS MONO(C)	Insert-in of STEREO channel L/R or the MONO channel

(*1) INPUT CH 33–64 can be displayed only if you're editing offline and have selected LS9-32 in the Model Select field of the Mixer Setup window, or if you are editing online with the LS9-32 connected.

(*2) Selectable only for effect modules.

⑥ ON, BYPASS

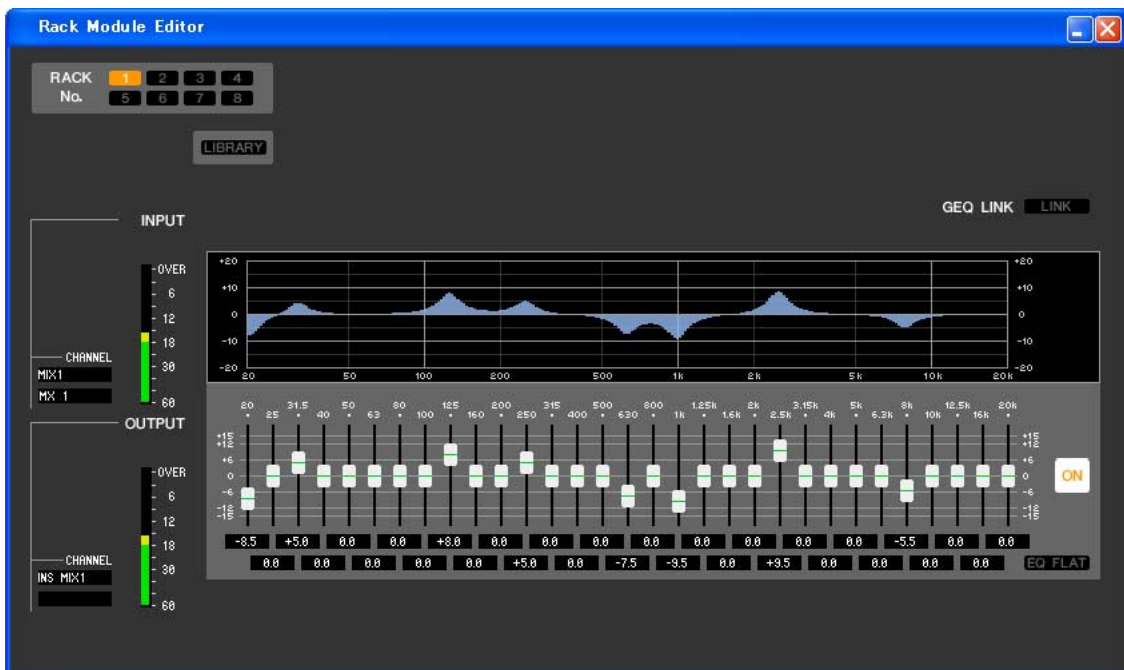
This switches the GEQ module or effect module between active and bypassed states.

A GEQ module is active when the ON button is lit.

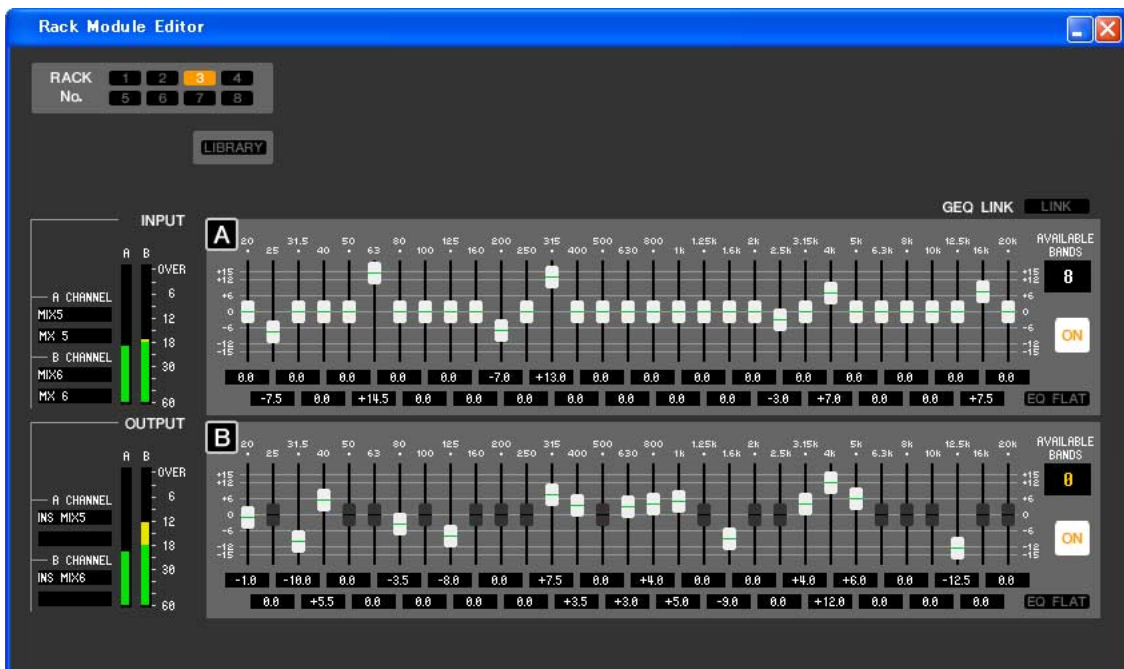
An effect module is active when the BYPASS button is dark.

Rack module editor — GEQ window

● 31 Band GEQ



● Flex15GEQ



In this window you can select the insertion destination of GEQ, and edit the parameters.

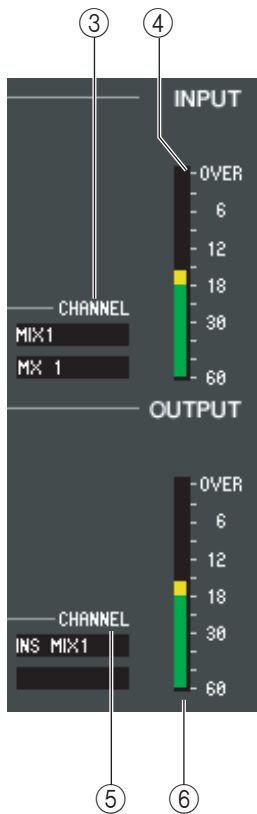


① Rack No. (Rack selection)

Select the rack module that you want to control.

② LIBRARY

This button accesses the GEQ library. Clicking this button will open the GEQ page of the LIBRARY window.



③ Input patch

Click the CHANNEL field, and choose one of the following as the signal route that will be patched to the input channel(s) of the currently selected GEQ module. This is linked with ⑤ Output Patch

NONE	No assignment
MIX1–16(*)	MIX channel 1–16
MATRIX1–8(*)	MATRIX channel 1–8
ST L, ST R, MONO(C) (*)	STEREO channel L/R, MONO channel
INS CH 1–32	INPUT CH 1–32 insert out
INS MIX 1–16	MIX channel 1–16 insert out
INS MATRIX1–8	MATRIX channel 1–8 insert out
INS ST L, INS ST R, INS MONO(C)	Insert-out of STEREO channel L/R or the MONO channel

(*) Displayed only, and cannot be selected.

The channel name is shown in the boxes immediately below.

④ Input meter

This indicates the level of the signal that is being input to the currently selected GEQ module.

⑤ Output patch

Click the CHANNEL field, and choose one of the following as the signal route that will be patched to the output channel(s) of the currently selected GEQ module. This is linked with ③ Input Patch.

NONE	No assignment
IN CH 1–64(*)(*2)	INPUT jacks 1-64(*)
STIN1L-STIN4R(*2)	L/R channels of ST IN jacks 1–4
INS CH 1–32	INPUTCH 1–32 insert in
INS MIX 1–16	MIX channel 1–16 insert in
MATRIX INSERT1–8	MATRIX channel 1–8 insert in
INS ST L, INS ST R, INS MONO(C)	Insert-in of STEREO channel L/R or the MONO channel

(*1) INPUT CH 33–64 can be displayed only if you're editing offline and have selected LS9-32 in the Model Select field of the Mixer Setup window, or if you are editing online with the LS9-32 connected.

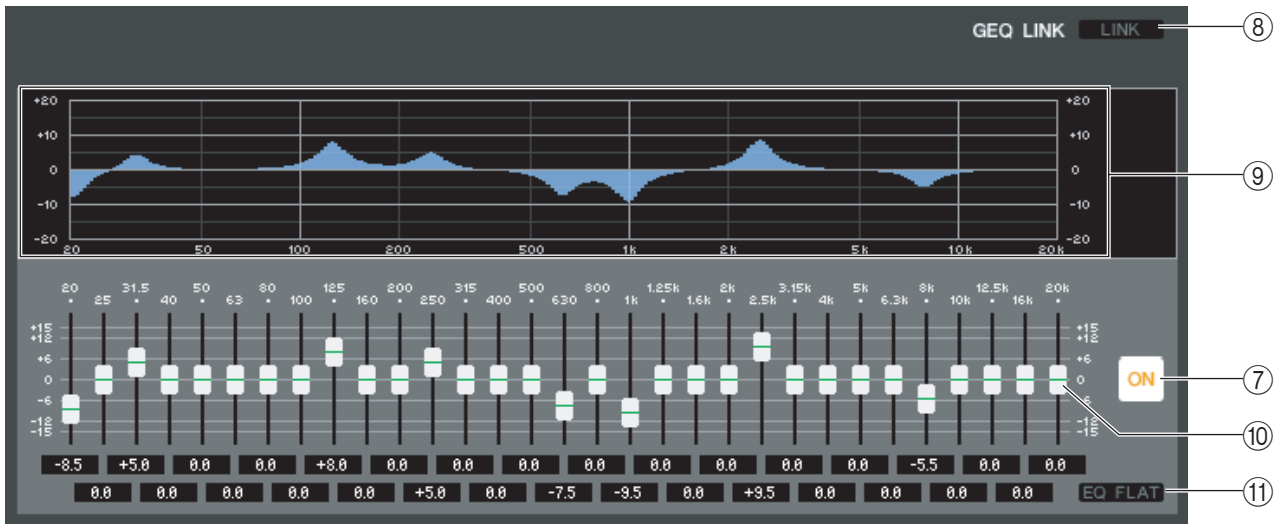
(*2) Displayed only, and cannot be selected.

The channel name is shown in the boxes immediately below.

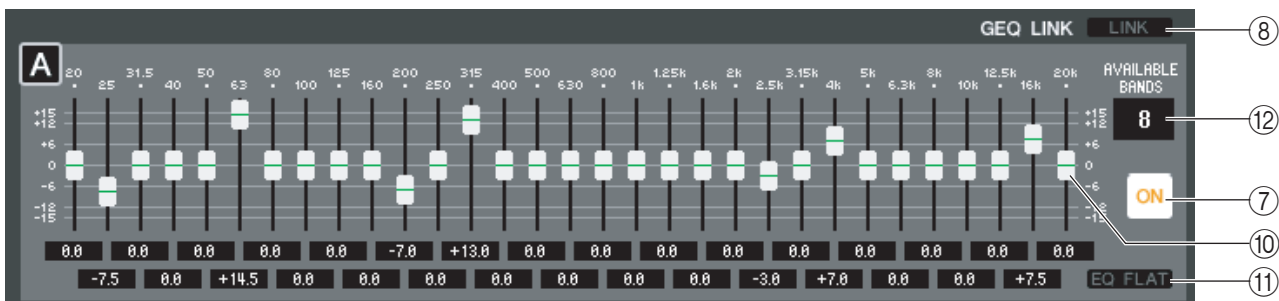
⑥ Output meter

This indicates the level of the signal that is being output to the currently selected GEQ module.

● 31 Band GEQ



● Flex15GEQ



⑦ ON (GEQ on/off)

Switches the currently selected GEQ module on/off.

⑧ LINK

This button links the settings of two adjacent odd-numbered/even-numbered 31-band GEQ modules, or the group A and group B settings of a Flex 15 GEQ. When you click this button, a window will ask you for confirmation. Click the buttons for the modules you want to use as the parameter copy-source and copy-destination. If you click the RESET BOTH button, the parameters of both modules will be reset to the default state.

⑨ GEQ graph

This graph shows the response of the currently selected GEQ module.

⑩ GEQ faders

These faders cut/boost the frequency bands of the GEQ module. The value of each fader is shown in the numerical box below it. Hold down the <Ctrl>(<⌘>) key and click to set the value to 0.00 dB.

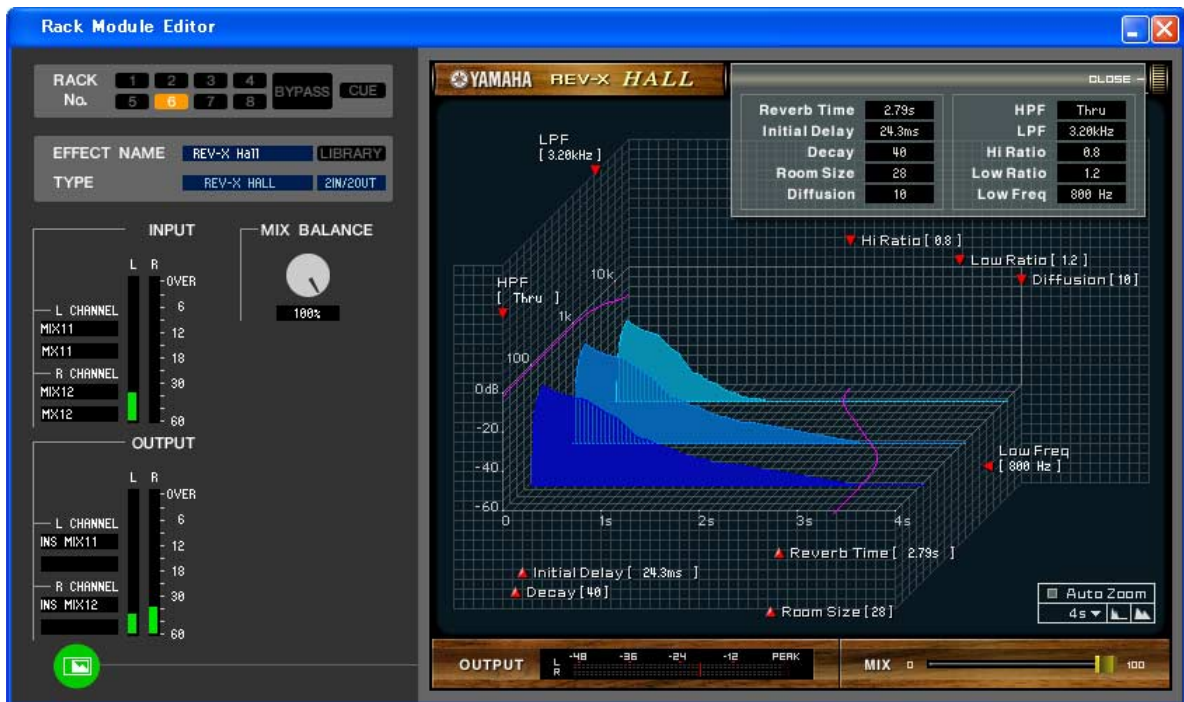
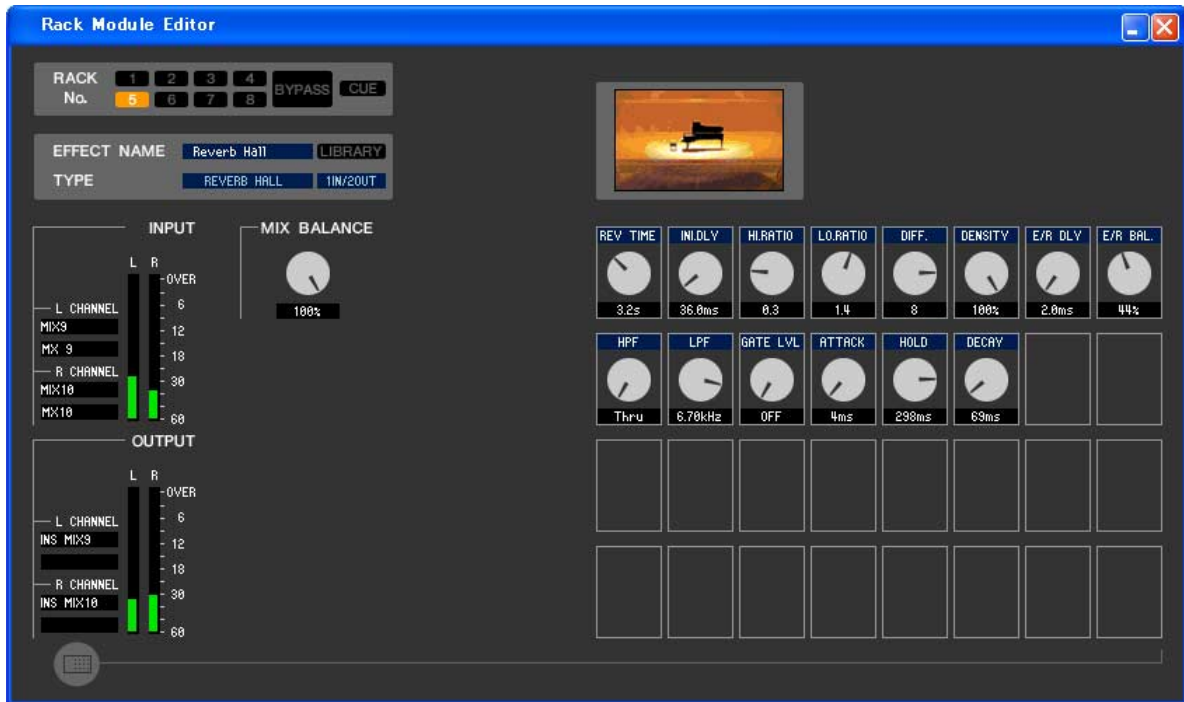
⑪ EQ FLAT

This button resets all GEQ faders to the 0 dB position.

⑫ AVAILABLE BANDS (number of operable bands) (Flex 15 GEQ only)

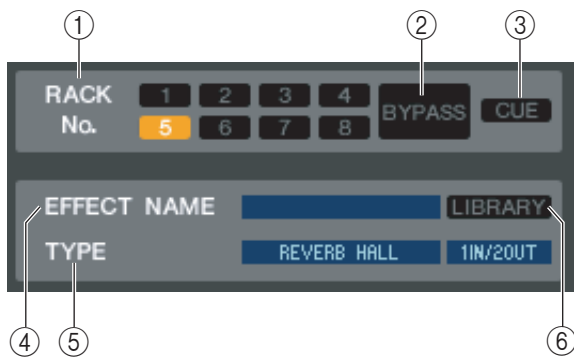
For a Flex 15 GEQ, you can operate any fifteen of the thirty-one bands. This numerical display box shows the remaining number of bands that can be operated. If you have operated fifteen bands, this number will be zero, and you won't be able to operate any additional bands. If you want to operate another band in this state, you'll need to return a previously-operated band back to the 0 dB position.

Rack module editor — Effect window



NOTE For details on the dedicated GUI screen, refer to the appendix.

Here you can select the effect type for an internal effect, edit the parameters, and specify the input/output patching.



① Rack No. (Rack selection)

Here you can select the rack that you want to operate. Only 5–8 can be used with effect modules; 1–4 are only for GEQ modules.

② BYPASS

This button temporarily bypasses the effect. Inactive when using a GEQ module.

③ CUE

This button cue-monitors the output of the currently selected effect. Inactive when using a GEQ module.

④ EFFECT NAME

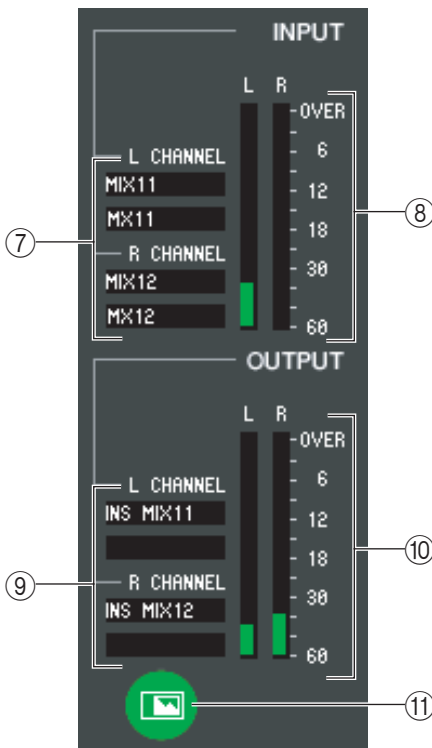
Indicates the title of the currently selected effect.

⑤ EFFECT TYPE

Indicates the currently selected effect type. You can also switch the effect type from this window. To do so, click the text box, and select the desired effect type from the popup menu that appears.

⑥ LIBRARY

This button accesses the effect library. Clicking this button will open the EFFECT page of the LIBRARY window.



⑦ Input patch

Click the L CHANNEL or R CHANNEL area, and choose one of the following as the signal route that will be patched to the L/R input channels of the internal effect.

NONE	No assignment
MIX 1–16(*)	MIX channel 1–16
MATRIX1–8(*)	MATRIX channel 1–8
ST L, ST R, MONO(C)*)	STEREO channel L/R, MONO channel
INS CH 1–32	INPUT CH 1–32 insert in
INS MIX 1–16	MIX channel 1–16 insert in
INS MATRIX1–8	MATRIX channel 1–8 insert in
INS ST L, INS ST R, INS MONO(C)	Insert-in of STEREO channel L/R or the MONO channel

(*) Selectable only for effect modules.

The channel name is shown in the boxes immediately below.

⑧ Input meter

Indicates the level of the signal being input to the internal effect.

⑨ Output patch

Click the L CHANNEL or R CHANNEL area, and choose one of the following as the signal route that will be patched to the L/R output channels of the internal effect.

NONE	No assignment
CH 1–64(*)(*2)	INPUT CH 1–64(*)
STIN1L–STIN4R(*2)	ST IN CH 1–4 (L/R)
INS CH 1–32	INPUT CH 1–32 insert out
INS MIX 1–16	MIX channel 1–16 insert out
MATRIX INSERT1–8	MATRIX channel 1–8 insert out
INS ST L, INS ST R, INS MONO(C)	Insert-out of STEREO channel L/R or the MONO channel

(*) INPUT CH 33–64 can be displayed only if you're editing offline and have selected LS9-32 in the Model Select field of the Mixer Setup window, or if you are editing online with the LS9-32 connected.

(*2) Selectable only for effect modules.

The channel name is shown in the boxes immediately below.

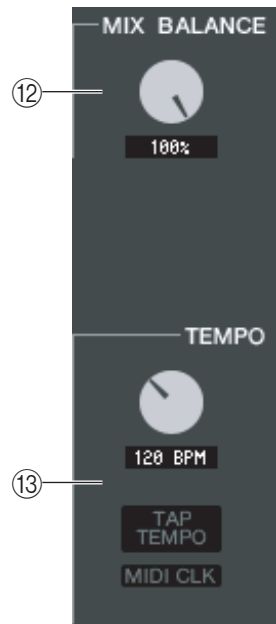
⑩ Output meter

Indicates the level of the signal being output from the internal effect.

⑪ Parameter display select button

If “046 REV-X HALL” or any subsequent effect is selected as the effect type, this switches between the standard parameter screen and the dedicated GUI screen.

For details on the dedicated GUI screens, refer to the appendix.



⑫ MIX BALANCE

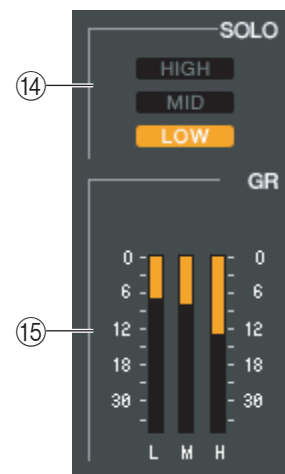
Adjusts the balance of the effect sound relative to the original sound. 0 (%) outputs only the original sound, and 100 (%) outputs only the effect sound.

⑬ TEMPO

If a tempo-type or modulation-type effect is selected, this allows you to adjust time-related parameters such as DELAY (delay time) and FREQ. (modulation speed).

To set the value of the TEMPO parameter, you can either input the BPM (Beats Per Minute) in the numerical box, or repeatedly click the TAP TEMPO button at the desired tempo.

If the MIDI CLK button is on, the TEMPO parameter value will synchronize to the MIDI timing clock being received from the MIDI port.

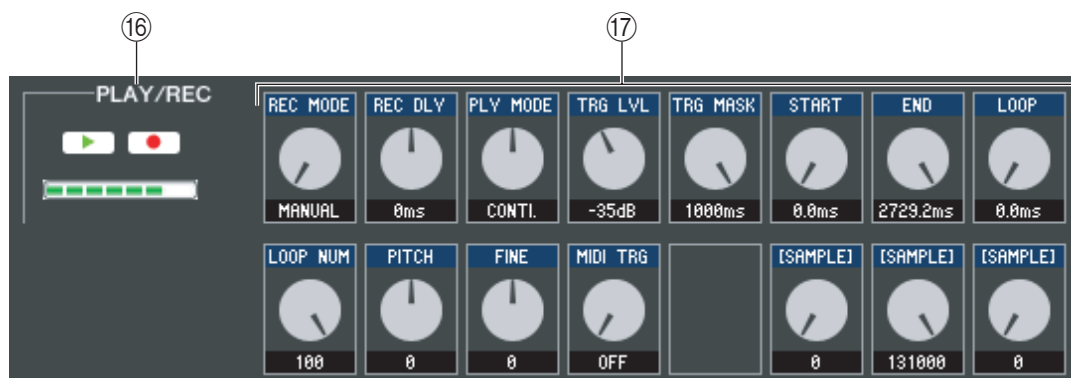


⑭ SOLO

If “044 M.BAND DYNA” or “045 M.BAND COMP” are selected as the effect type, these buttons allow you to monitor only the specified band from the three bands HIGH, MID, and LOW.

⑮ GR meter

If “044 M.BAND DYNA” or “045 M.BAND COMP” are selected as the effect type, this indicates the gain reduction amount for the H (HIGH), M (MID), and L (LOW) bands.



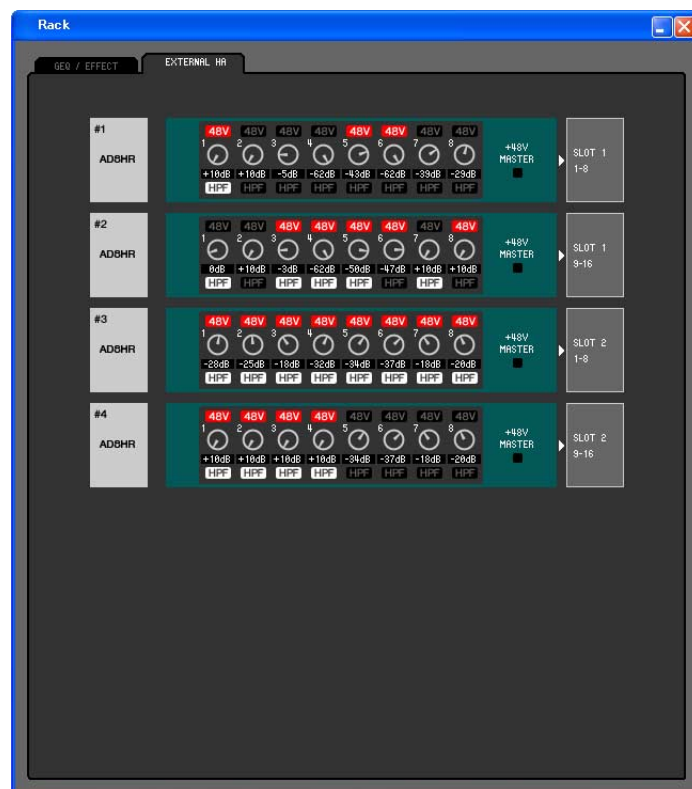
⑯ PLAY/REC (Play/Record) buttons

If “042 FREEZE” is selected as the effect type, you can use these buttons to record and play back the signal being input to the effect.

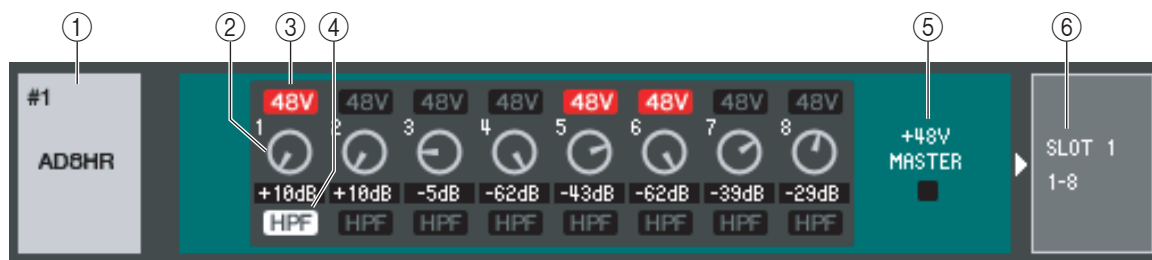
⑰ Effect parameters

This area shows the effect parameters and knobs for the currently selected effect type.

EXTERNAL HA page



NOTE A maximum of two head amp devices can be connected to the LS9-16, and a maximum of four can be connected to the LS9-32. #3 and #4 are displayed only if you're editing offline and have selected LS9-32 in the Model Select field of the Mixer Setup window, or if you are editing online with the LS9-32 connected.



- ① **External HA name**
This shows the model name and ID number of the currently connected external head amp device.
- ② **GAIN**
This specifies the gain for each channel. The current value is shown in the box below.
- ③ **48V**
This switches the phantom power (+48V) on/off for each channel.
- ④ **HPF (High Pass Filter)**
This switches the HPF on/off for each channel.
- ⑤ **+48V MASTER**
If an AD8HR is connected, this indicates the on/off status of the master phantom power supply.
- ⑥ **Slots/Channels**
Here you can select the slots/channels to which the audio outputs of the external head amp device are connected.

NONE
SLOT1 1-8
SLOT1 9-16
SLOT2 1-8(*)
SLOT2 9-16(*)

(*) SLOT2 is displayed only if you're editing offline and have selected LS9-32 in the Model Select field of the Mixer Setup window, or if you are editing online with the LS9-32 connected.

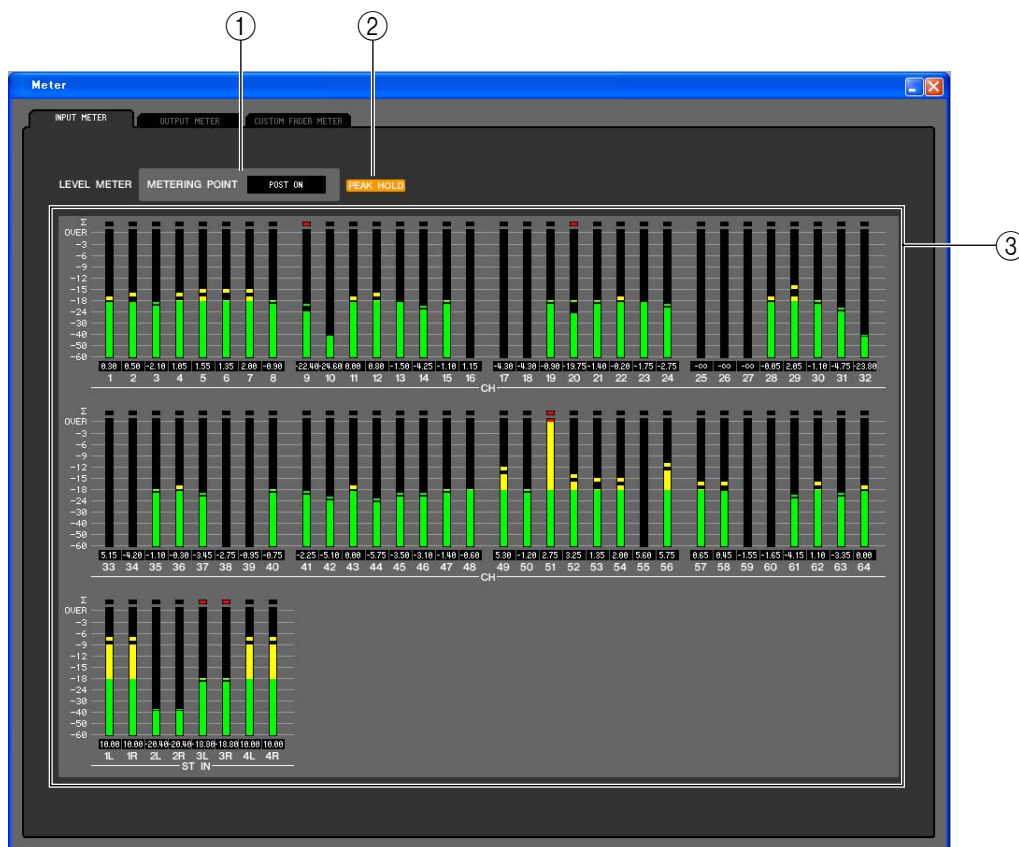
Meter window

This window shows the signal levels of each section in the LS9, letting you check for the presence of signals and whether an overload is occurring.

This window is divided into INPUT METER, OUTPUT METER and Custom Fader Layer Meter; to switch pages, click the tabs located at the top of the window.

NOTE In order to view the LS9's signal levels in the Meter window, make sure that LS9 Editor and the LS9 itself are synchronized.

INPUT METER page



① METERING POINT

Select one of the following as the point where metering will occur.

PRE HPF, PRE FADER, POST ON

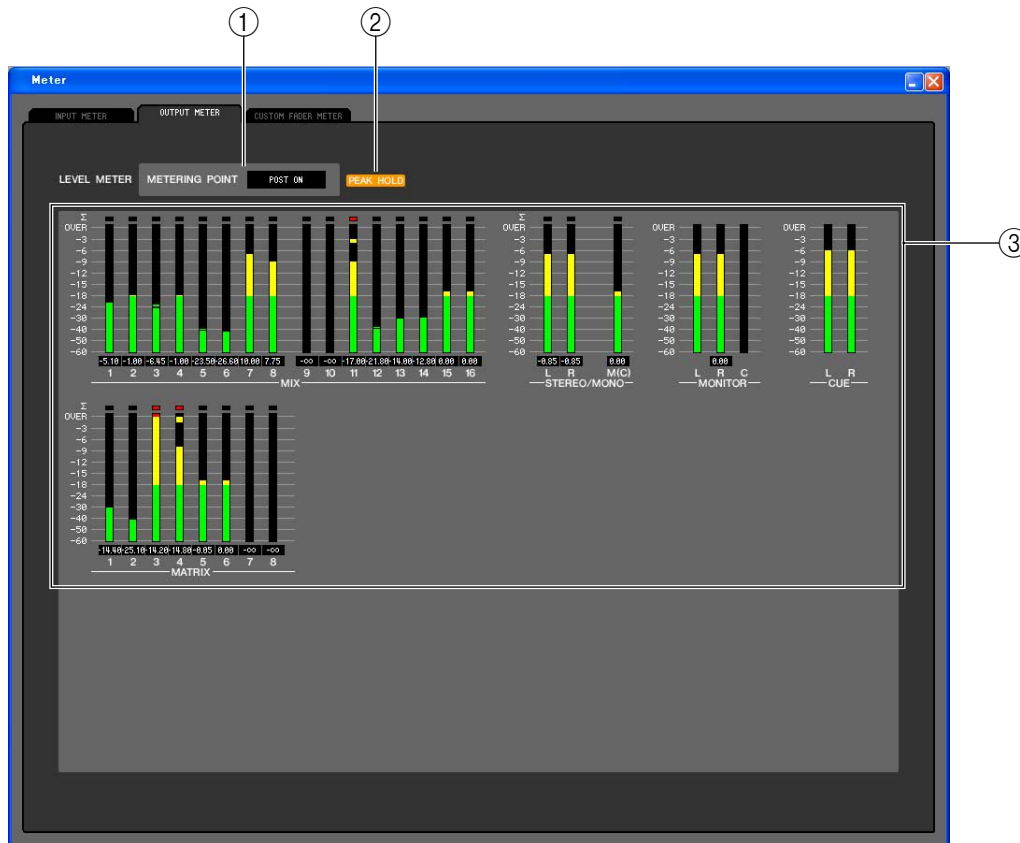
② PEAK HOLD

Switches peak hold on/off.

③ Meters

These peak level meters show the input level of each channel. The current fader value is shown in the box below. If clipping occurs at any one of the detection points in the channel, the Σ segment will light.

OUTPUT METER page



① METERING POINT

Select one of the following as the point where metering will occur.
PRE EQ, PRE FADER, POST ON

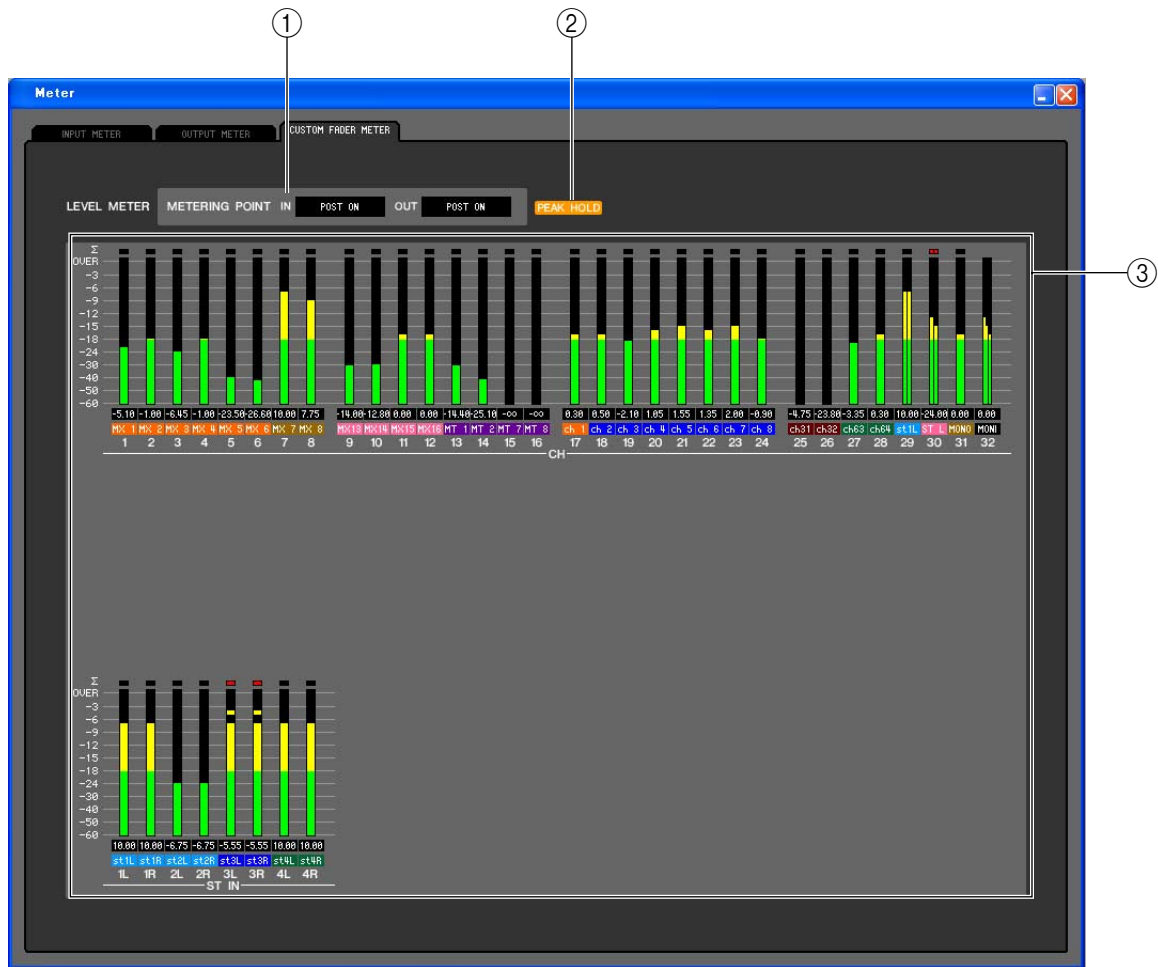
② PEAK HOLD

This is the same as in the INPUT METER page.

③ Meters

This is the same as in the INPUT METER page.

CUSTOM FADER LAYER METER page



① METERING POINT

This selects the point at which the signal levels will be displayed. You can choose from the following metering points for input channels and for output channels.

IN: PRE HPF, PRE FADER, POST ON

OUT: PRE EQ, PRE FADER, POST ON

② PEAK HOLD

This is the same function as in the INPUT METER page.

③ Meters

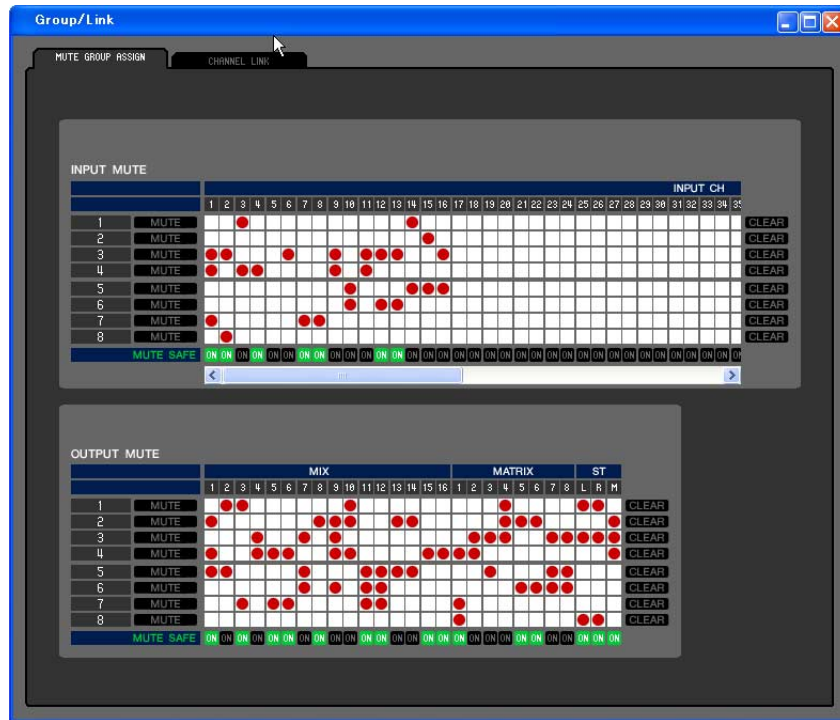
These are peak level meters that show the input level of each channel. The box below shows the current fader value, and the box below that shows the ID of the assigned channel.

If clipping occurs at even one of the multiple detection points in each channel, the Σ segment will light.

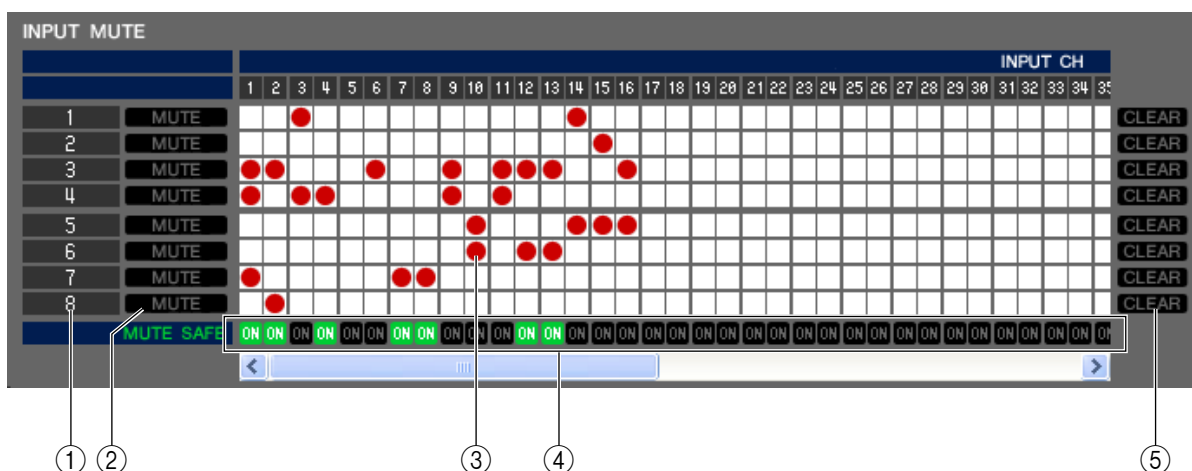
Group/Link window

In this window you can select the channels that will be assigned to each mute group. This window is divided into two pages; the MUTE GROUP ASSIGN page and CHANNEL LINK page.

MUTE GROUP ASSIGN page



Here you can specify the channels that will be assigned to mute groups 1–8. The upper part of the screen lets you assign input channels to mute groups, and the lower part of the screen lets you assign output channels to mute groups.




① Mute group

This area shows the mute group number.

② MUTE MASTER

These buttons enable/disable each input channel or output channel mute group.

③ Grid

This grid lets you assign channels (horizontal rows) to mute groups (vertical columns). Currently-patched grids are indicated by a  symbol. To enable or disable an assignment, click the desired grid.

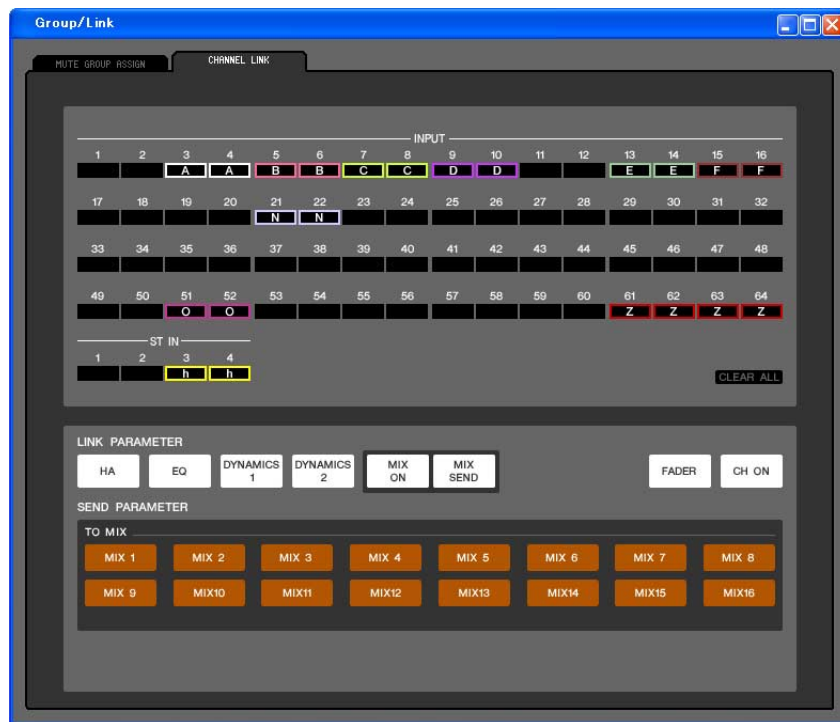
④ MUTE SAFE ON

These buttons switch Mute Safe on/off for each channel. Channels for which this button is on will be excluded from mute groups.

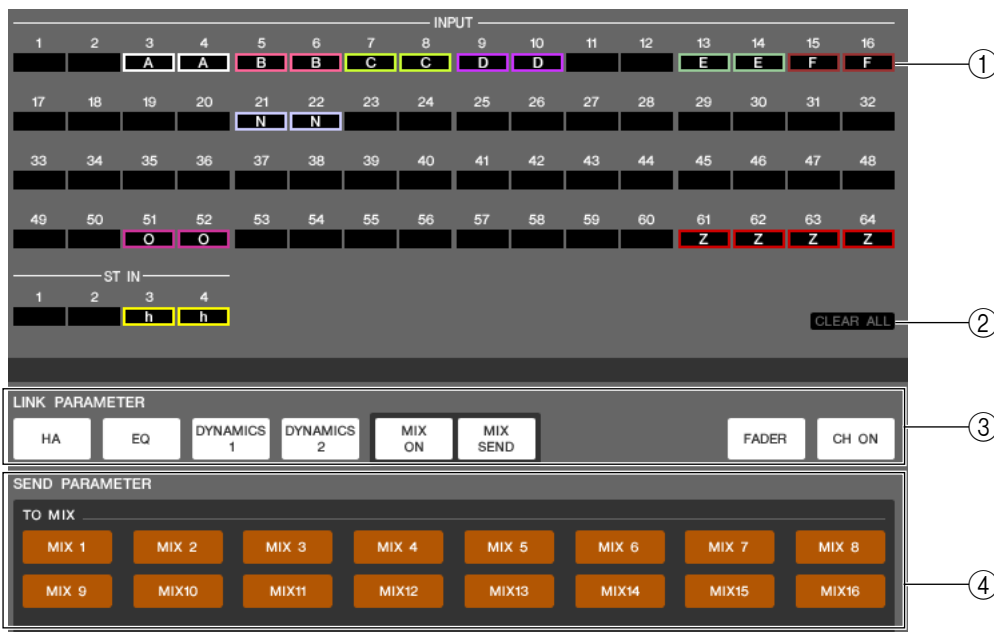
⑤ CLEAR

These buttons clear all input channels and output channels assigned to the corresponding mute group. When you click one of these buttons a window will appear, asking you to confirm the operation. To execute the Clear operation, click the OK button.

CHANNEL LINK page



By linking two or more input channels, you can control the parameters of these channels simultaneously.



① **Link buttons**

Here you can select the link group (A–Z, a–h) to which each input channel will be assigned. If you don't want an input channel to be linked, select NONE. You can assign up to 32^(*) groups for INPUT CH 1–64, and up to two groups for ST IN CH.

(*) During offline editing when LS9-16 is selected in the Model Select field of the Mixer Setup window, or during online editing with the LS9-16 connected, up to sixteen groups can be assigned for INPUT CH 1–32, and you'll be able to choose from link groups A–R.

② **CLEAR ALL**

Clears the link settings for all channels.

③ **LINK PARAMETER**

Here you can select the parameters that will be linked for operation.

HA	Head amp gain and phantom power settings
EQ	Equalizer settings
DYNAMICS1	Dynamics 1 settings
DYNAMICS2	Dynamics 2 settings
MIX ON	MIX SEND on/off
MIX SEND	Send amount from input channel to MIX bus
FADER	Fader level value
CH ON	Input channel module output on/off

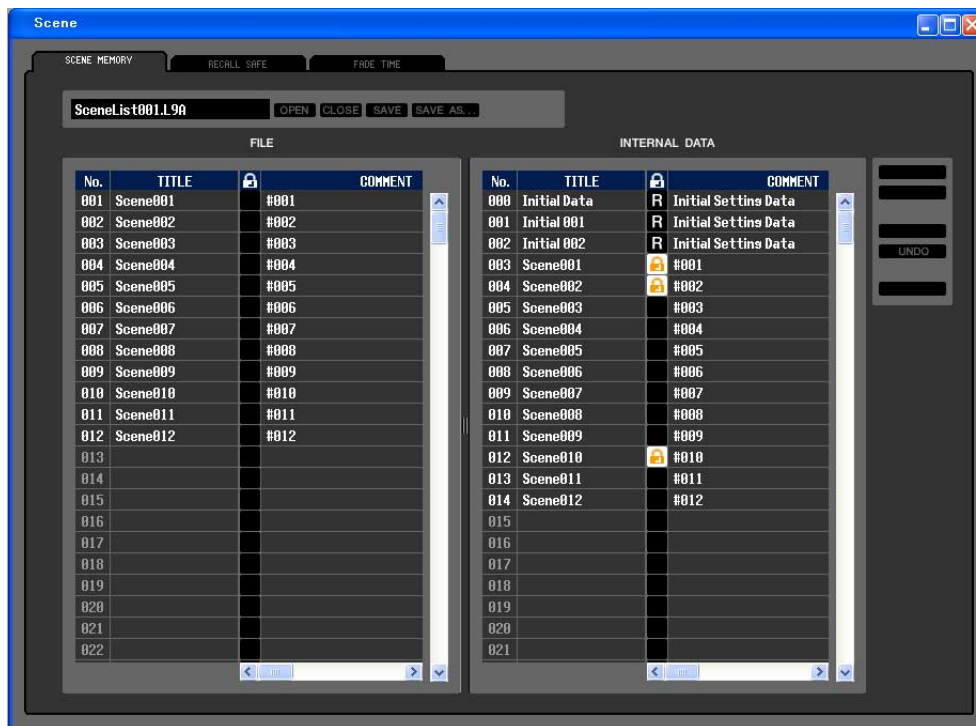
④ **SEND PARAMETER**

Specify the link status for each MIX SEND bus.

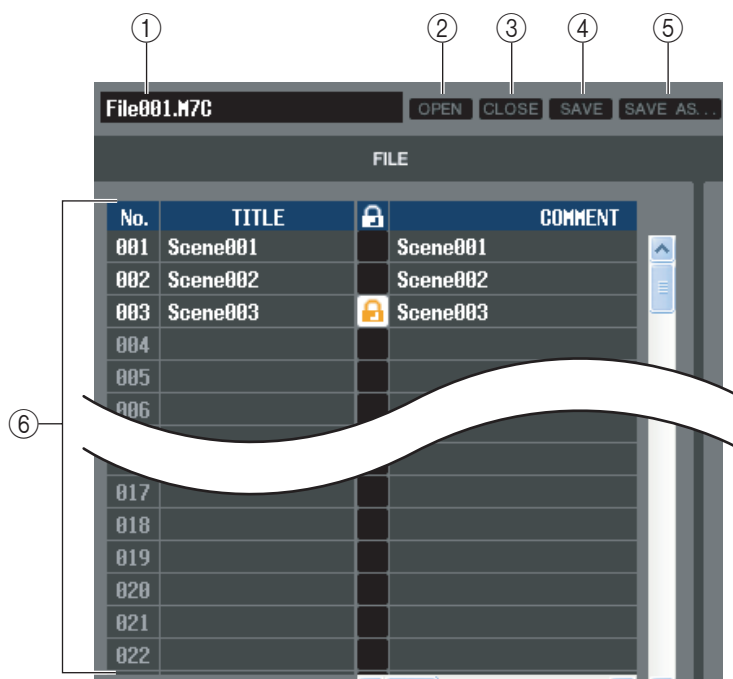
Scene window

Here you can manage scene memories, and make various settings related to scene recall operations. This window is divided into SCENE MEMORY, RECALL SAFE, and FADE TIME pages. To switch pages, click the tabs shown in the upper part of the window.

SCENE MEMORY page



Here you can edit the LS9's scene memories. You can also load scene library files from a USB storage device or from a drive of your computer, and edit them. In this case, you can re-save all scenes to a file after editing, recall just a desired scene, or copy a desired scene to the scene memory of the LS9 itself.



- 1 File name**
Indicates the file name of the currently-open scene library.
- 2 OPEN (Open a file)**
Opens a scene library file located on a drive of your computer.
- 3 CLOSE (Close a file)**
Closes the currently-open scene library file.
- 4 SAVE**
Saves the currently-open scene library file on a drive of your computer.
- 5 SAVE AS (Save as a different name)**
Saves the currently-open scene library file under a different name on a drive of your computer.

⑥ FILE

This area lists the scenes in the file you opened using the OPEN button (②). The list includes the following items.

HINT To view items that are not currently shown, scroll the list to the right.

⑦ No.	⑧ TITLE	⑨	⑩ COMMENT	⑪ FOCUS							⑫ TIME STAMP	⑬ FADING	
000	Initial Data	R	Initial Settings Data	ALL	RACK	HA	IN PATCH	OUT PATCH	IN	OUT			FADING
001	Scene001		Scene001	ALL	RACK	HA	IN PATCH	OUT PATCH	IN	OUT		08/01/2005 00:00:00	FADING
002	Scene002	🔒	Scene002	ALL	RACK	HA	IN PATCH	OUT PATCH	IN	OUT	WITH SEND	08/01/2005 00:00:00	FADING
003	Scene003		Scene003	ALL	RACK	HA	IN PATCH	OUT PATCH	IN	OUT	WITH SEND	08/01/2005 00:00:00	FADING
004													
005													
006													
007													
008													
009													
010													

⑦ No.

This is the scene number.

⑧ TITLE

This is the scene title. You can also double-click this area and edit the title.

⑨ PROTECT

This indicates whether protect is on or off for each scene. This area displays a lock icon for protected scenes; these scenes cannot be overwritten, nor their title edited. Read-only scenes are indicated by “R” displayed in this column.

⑩ COMMENT

This column shows the comment assigned to each scene. You can also double-click this column and edit the comment.

⑪ FOCUS

From the following list, choose the parameters that will be recalled by a Scene Recall. If you select ALL, the other buttons will be unavailable. Multiple selections are allowed for buttons other than ALL.

ALL	All the settings of the scene will be recalled
RACK	GEQ and internal effect settings will be recalled
HA	Internal head amp and external head amp settings will be recalled
IN PATCH	Input patch settings will be recalled
OUT PATCH	Output patch settings will be recalled
IN	Input channels (INPUT, ST IN, DCA) settings will be recalled except for head amp settings
OUT	Output channel (MIX, MATRIX, STEREO/MONO) settings will be recalled
WITH SEND(*)	Send settings to the output channels will be recalled

(*) Can be selected only if OUT is selected

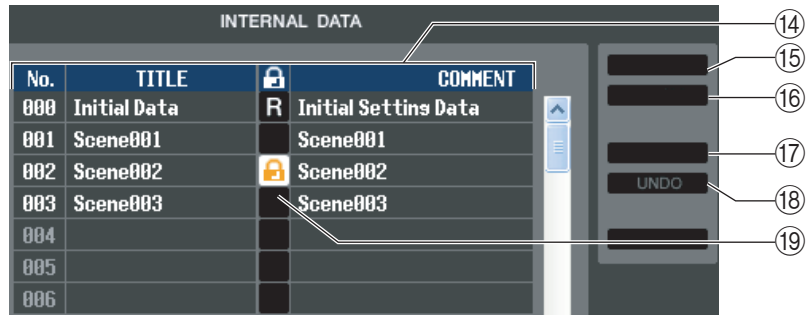
⑫ TIME STAMP

Indicates the time at which the scene was last stored, in the format of month/day/year/hours/minutes/seconds. This column is only for display, and cannot be edited.

⑬ FADING

This switches the Fade function on/off for each scene.

For more about Fade function settings, refer to the FADE TIME page.



⑭ INTERNAL DATA

This area shows the LS9's scene memory contents. The items displayed are the same as in the FILE list (⑥).

As desired, you can copy single or multiple scenes between the FILE list and the INTERNAL DATA list, and copy or move them to a different location within a list.

⑮ STORE

Stores the current settings to the scene that is selected in the list.

⑯ RECALL

Recalls the settings of the scene selected in the list.

⑰ CLEAR

Clears the scene(s) selected in the list. (the title of the cleared scene will revert to a blank)

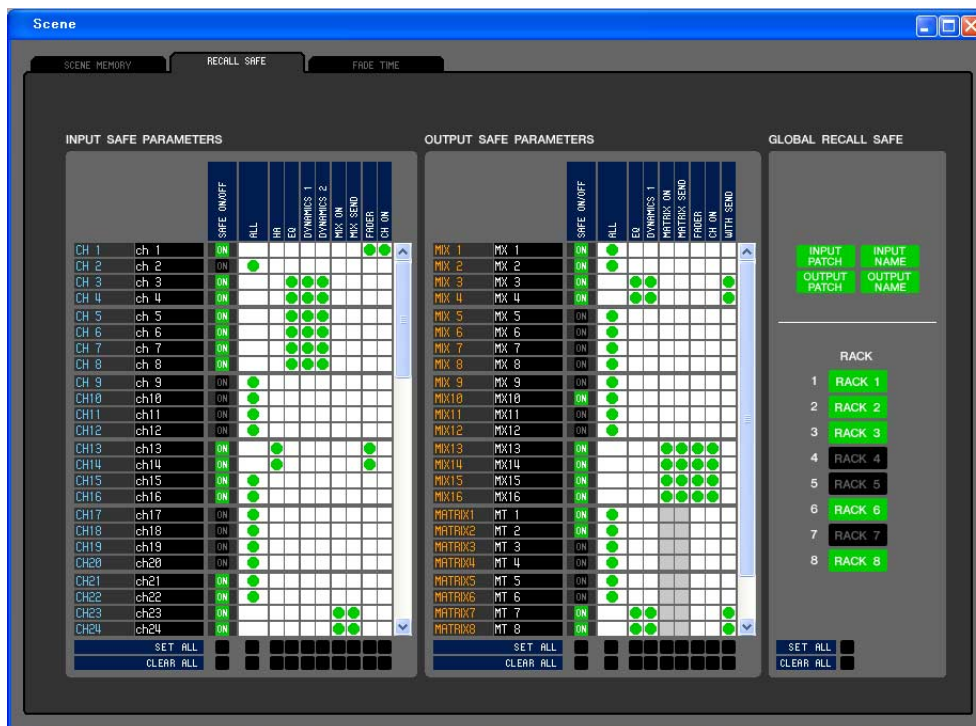
⑱ UNDO

Cancels the last-performed scene recall, store, copy, or move operation.

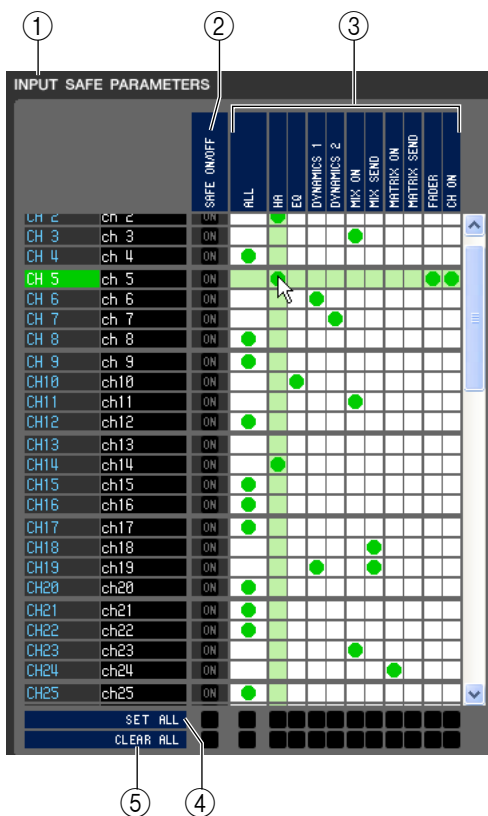
⑲ PROTECT

Turns on the Protect setting for the scene(s) selected in the list.

RECALL SAFE page



Here you can make settings for the Recall Safe function that excludes only specific channels from recall operations of all scenes.



1 INPUT SAFE PARAMETERS

In this area you can view and edit the Recall Safe settings for all input channels and ST IN CH. This area contains the following items.

2 SAFE ON/OFF

These are on/off buttons that select the channels to be excluded from recall operations.

3 Parameter matrix grid

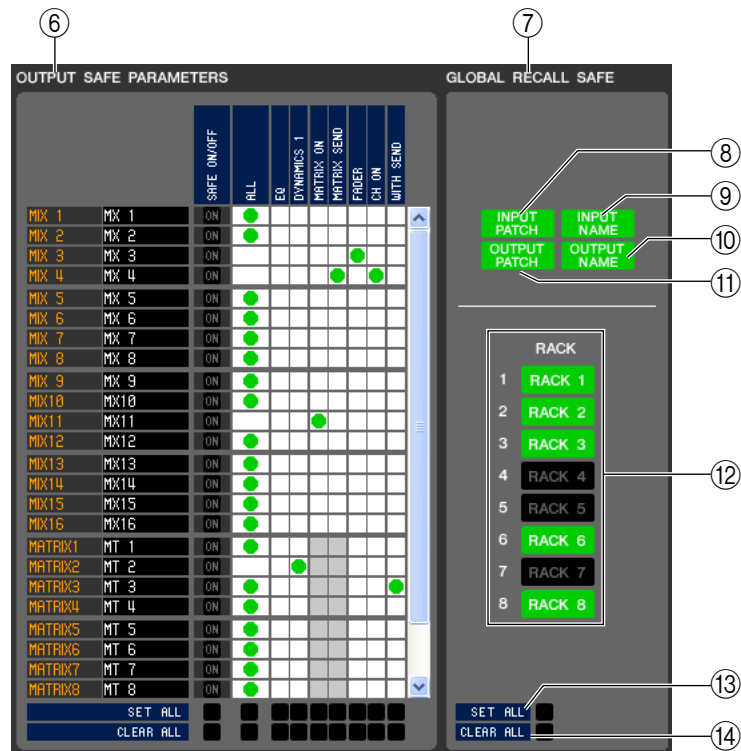
Here you can select the parameters to be excluded from recall operations. If the ALL button is on, all parameters will be excluded.

4 SET ALL

These buttons turn on all buttons for all input channels or ST IN CH, or for the corresponding parameter.

5 CLEAR ALL

These buttons turn off all buttons for all input channels or ST IN CH, or for the corresponding parameter.



⑥ OUTPUT SAFE PARAMETERS

In this area you can view and edit the Recall Safe settings for all output channels. The items in this area are the same as in the Input Safe Parameters area (①).

⑦ GLOBAL RECALL SAFE

In this area you can view and edit the Recall Safe settings for patching, and racks.

⑧ INPUT PATCH

This on/off button specifies whether INPUT PATCH settings will be excluded from recall operations.

⑨ INPUT NAME

This on/off button specifies whether the channel names of input channels will be excluded from recall operations.

⑩ OUTPUT NAME

This on/off button specifies whether the channel names of output channels will be excluded from recall operations.

⑪ OUTPUT PATCH

This on/off button specifies whether OUTPUT PATCH settings will be excluded from recall operations.

⑫ RACK

This on/off button specifies whether RACK settings will be excluded from recall operations.

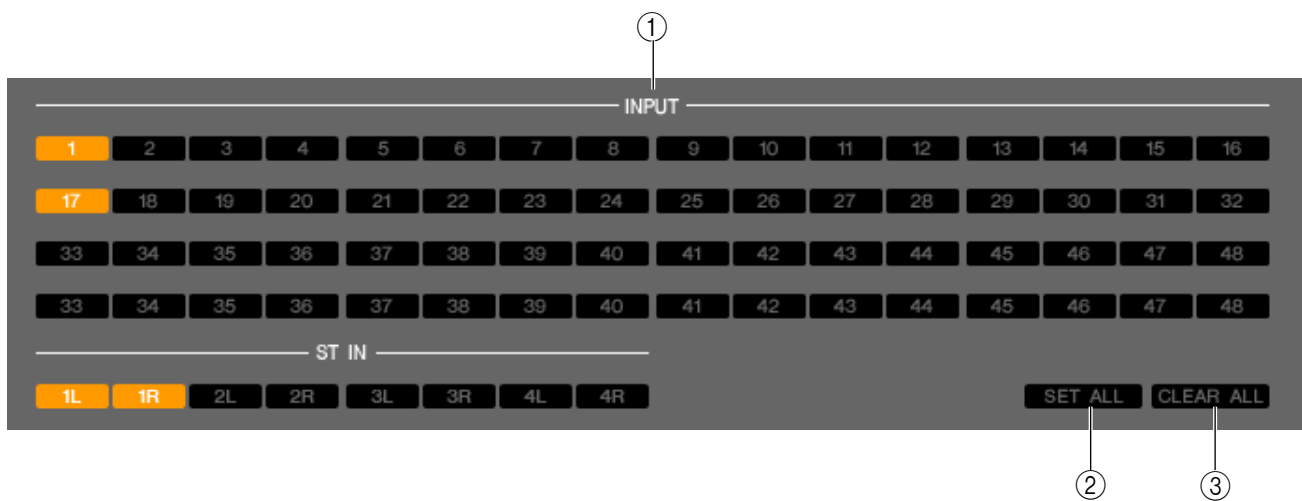
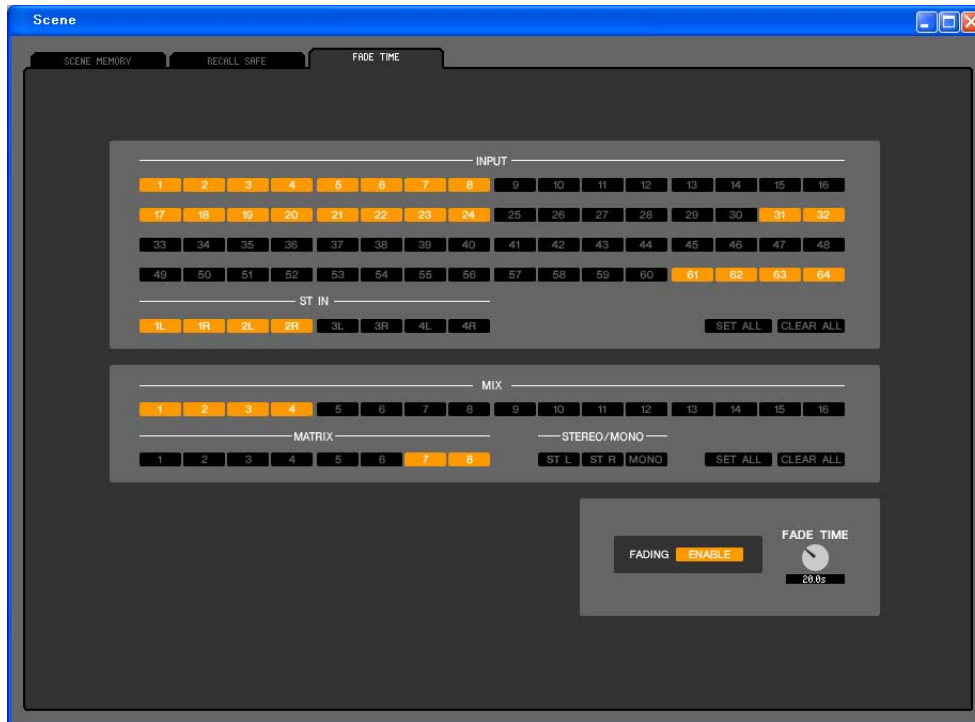
⑬ SET ALL

This button switches on all buttons for parameters 8–12.

⑭ CLEAR ALL

This button switches off all buttons for parameters 8–12.

FADE TIME page



Here you can make settings for the Fade Time function which adjusts the time over which fader and pan will reach their new values when a scene is recalled. Since the Fade function settings are independent for each scene, you must recall the desired scene before you make these settings.

① INPUT CHANNEL FADING ENABLE

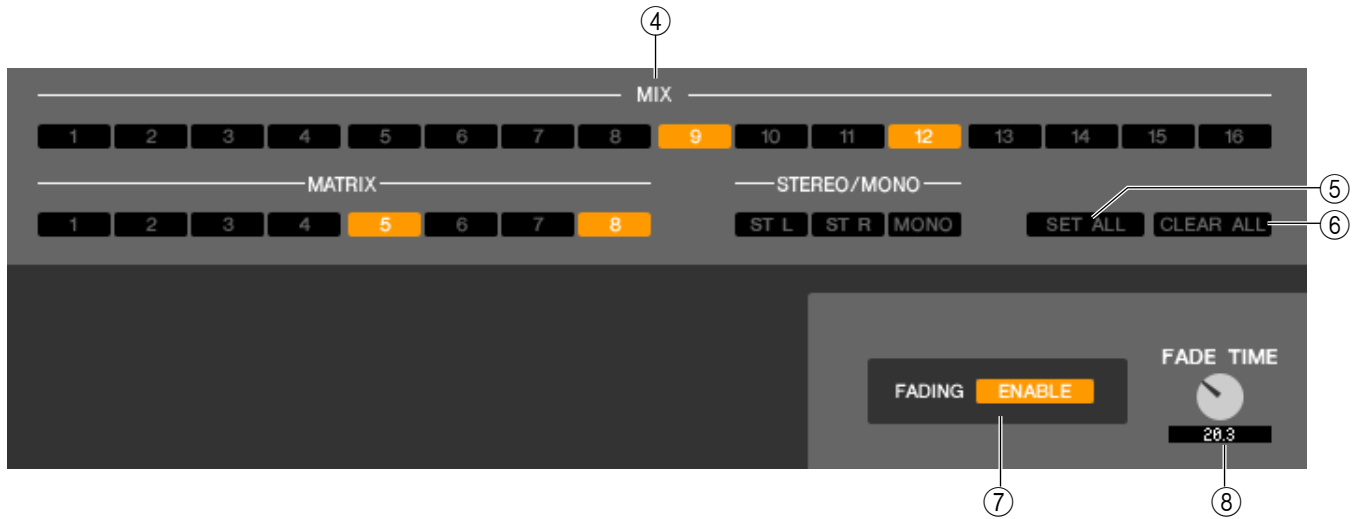
These on/off buttons select the input channels that will be excluded from recall operations.

② SET ALL

This button switches on the buttons of all input channels.

③ CLEAR ALL

This button switches off the buttons of all input channels.



④ **OUTPUT CHANNEL FADING ENABLE**

These are on/off buttons that select the output channels that will be excluded from recall operations.

⑤ **SET ALL**

This button switches on the buttons of all output channels.

⑥ **CLEAR ALL**

This button switches off the buttons of all output channels.

⑦ **FADING ENABLE**

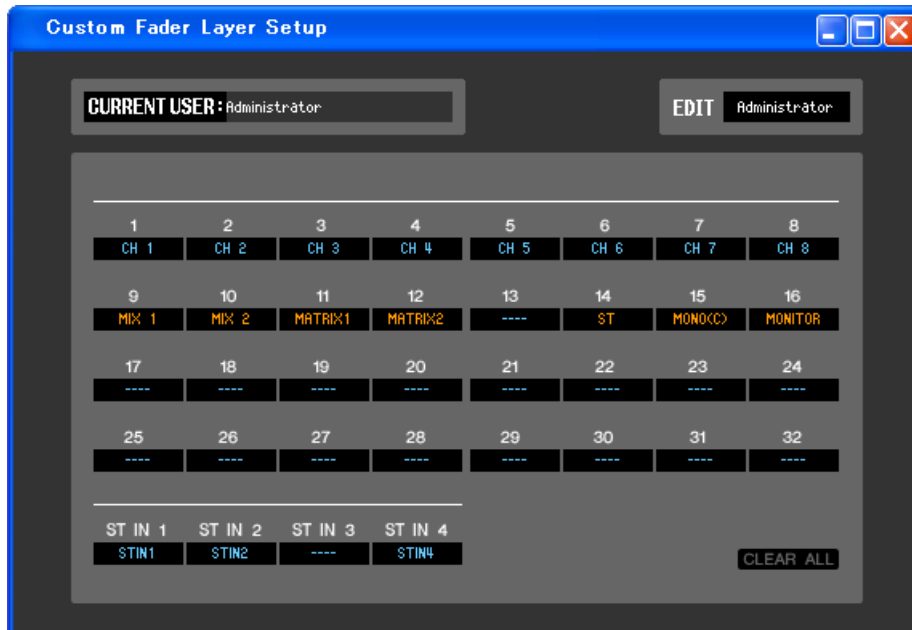
This button enables/disables the Fade function for the faders of the current scene.

⑧ **FADE TIME**

Drag this knob in the screen to adjust the fade time. The current value is shown in the numerical box immediately below.

Custom Fader Layer Setup window

The Custom Fader Layer allows you to freely combine the LS9's internal channels in a custom layer for each user level. The Custom Fader Layer Setup window lets you edit these Custom Fader Layer settings.



NOTE CH 17–32 and ST IN 3/4 are displayed only if you're editing offline and have selected LS9-32 in the Model Select field of the Mixer Setup window, or if you are editing online with the LS9-32 connected.

Current User

This shows the name of the current user of the LS9 console. In the initial state in which the Editor has never been synchronized with the LS9 console, this will be Administrator. In LS9 Editor, operations can always be performed with Administrator privileges, and the Administrator's settings will always be saved in the user authentication key.

Edit User Select

Select the user level that will be displayed and edited in the Custom Fader Layer Setup window.

In the initial state, you can select either Administrator or Guest.

If the Editor is synchronized with an LS9 console that is authenticated with a user authentication key saved on a USB storage device, then you can select either Administrator, Guest, or Ext.User.

NOTE The Overview window shows the settings of the current user.

NOTE Only the settings for Administrator and Guest are saved in the session file.

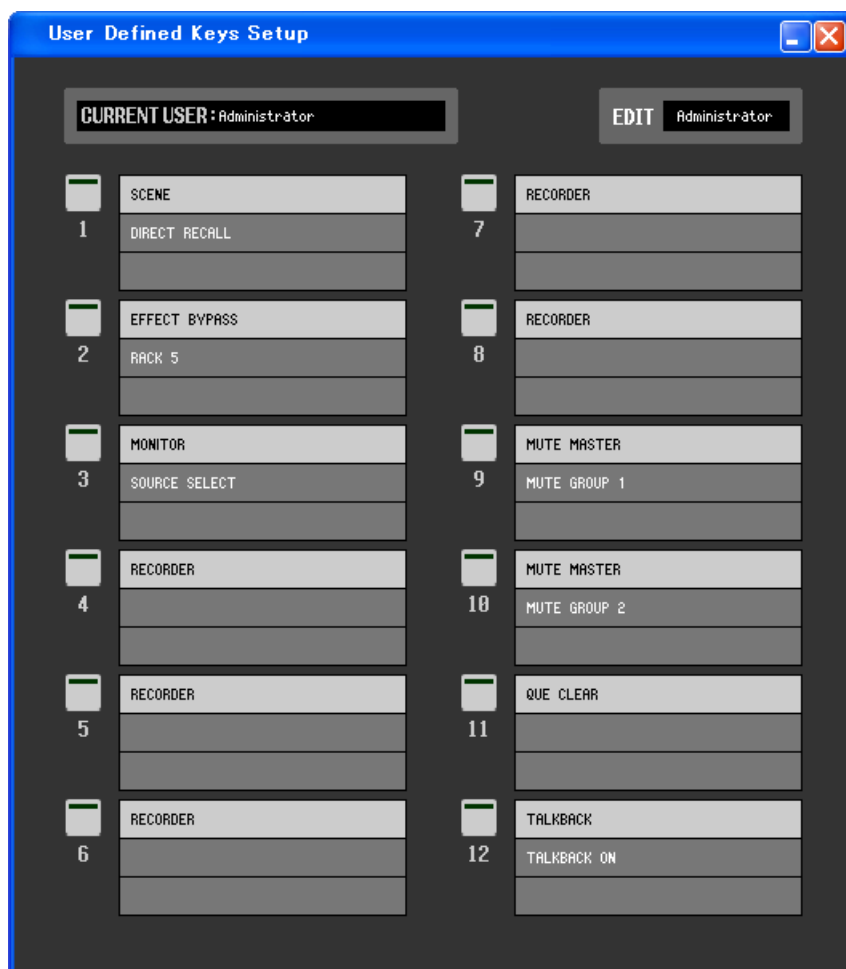
Channel ID

Here you can select the channels that will be assigned to the channel strip of the Custom Fader Layer.

CLEAR ALL

This returns the settings to an initialized state in which nothing has been assigned.

User Defined Keys Setup window



NOTE INPUT CH 33–64 are displayed only if you're editing offline and have selected LS9-32 in the Model Select field of the Mixer Setup window, or if you are editing online with the LS9-32 connected.

Current User

This shows the name of the current user of the LS9 console. In the initial state in which the Editor has never been synchronized with the LS9 console, this will be Administrator. In LS9 Editor, operations can always be performed with Administrator privileges, and the Administrator's settings will always be saved in the user authentication key.

Edit User Select

Select the user level that will be displayed and edited in the User Defined Keys Setup window.

In the initial state, you can select either Administrator or Guest.

If the Editor is synchronized with an LS9 console that is authenticated with a user authentication key saved on a USB storage device, then you can select either Administrator, Guest, or Ext.User.

NOTE Only the settings for Administrator and Guest are saved in the session file.

Function name

Here you can select the function or parameters that will be assigned to each user-defined key.

When you click the button, the Parameter List dialog box will appear.

For details on the parameters you can assign, refer to the "LS9-16/32 Owner's Manual."

Keyboard Shortcuts

Menu	Action	Key operation	
		Windows	Mac
File menu	Creates a new Session	Ctrl+N	⌘+N
	Opens a previously saved Session	Ctrl+O	⌘+O
	Saves the current Session	Ctrl+S	⌘+S
Edit menu	Undo	Ctrl+Z	⌘+Z
	Redo	Ctrl+Y	⌘+Y
Windows menu	Closes the active window	Ctrl+W	⌘+W
	Closes all windows	Ctrl+Alt+W	⌘+Option+W
	Tiles all windows	Ctrl+T	⌘+T
	Cascades all windows	Ctrl+Alt+T	⌘+Option+T
	Opens the Master window	Ctrl+1	⌘+1
	Opens the INPUT CH (CH1-16) window	Ctrl+Alt+1	⌘+Option+1
	Opens the INPUT CH (CH17-32) window	Ctrl+Alt+2	⌘+Option+2
	Opens the INPUT CH (CH33-48) window(*)	Ctrl+Alt+3	⌘+Option+3
	Opens the INPUT CH (CH49-64) window(*)	Ctrl+Alt+4	⌘+Option+4
	Opens the ST IN window	Ctrl+Alt+5	⌘+Option+5
	Opens the MIX window	Ctrl+Alt+6	⌘+Option+6
	Opens the MATRIX window	Ctrl+Alt+7	⌘+Option+7
	Opens the STEREO/MONO window	Ctrl+Alt+8	⌘+Option+8(**)
	Opens the Selected Channel window	Ctrl+3	⌘+3
	Opens the Library window	Ctrl+4	⌘+4
	Opens the Patch Editor window	Ctrl+5	⌘+5
	Opens the Rack window	Ctrl+6	⌘+6
Opens the Meter window	Ctrl+7	⌘+7	
Opens the Group/Link window	Ctrl+8	⌘+8	
Opens the Scene window	Ctrl+9	⌘+9	
Synchronization menu	Opens the Re-Synchronize window	Ctrl+0	⌘+0
Library window or SCENE MEMORY page of the Scene window	Selects consecutive multiple items (memories)	Shift+click	Shift+click
	Selects non-consecutive multiple items (memories)	Ctrl+click	⌘+click
	Selects all memories in a section	Ctrl+A	⌘+A

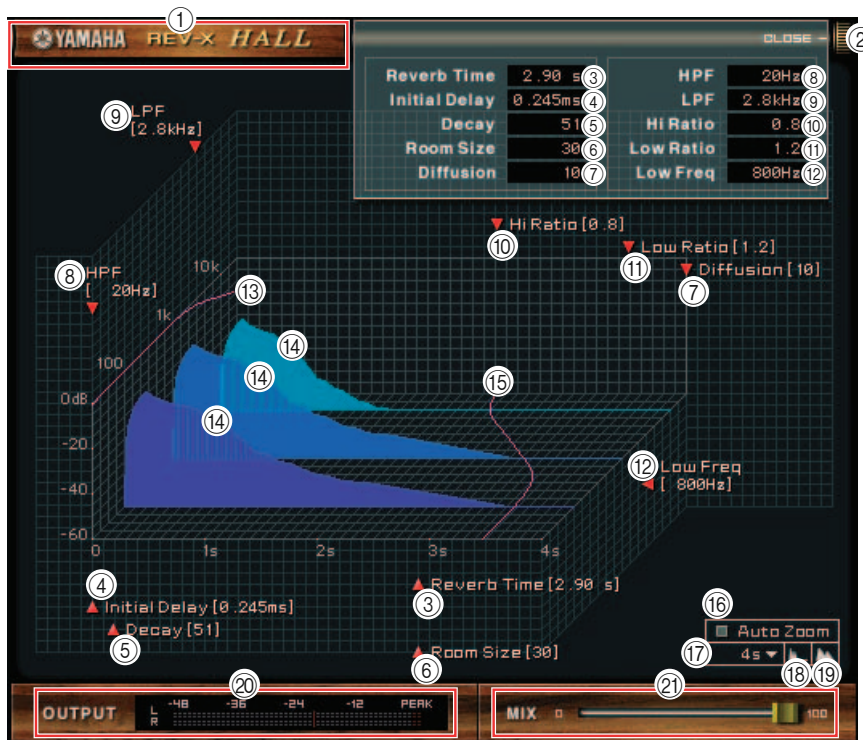
(*) Displayed only if you're editing off-line with LS9-32 selected for Model Select in the Mixer Setup screen, or if you're editing on-line with the LS9-32 connected.

(**) Modify or cancel the shortcut assignment for the Universal Access Zoom function, or use the number key <8>.

Appendix

REV-X HALL/REV-X ROOM/REV-X PLATE

Part Names and Functions



① EFFECT NAME


The effects name appears here.

② [OPEN/CLOSE]

Click here to open or close the parameter window.

③ [Reverb Time]

Duration of time until the reverberation attenuates and stops. Higher values extend the reverberation.

Drag the icon  to change the value.

NOTE The range is from 0.3s through 30.0s. However, the range varies depending on the Room Size setting.

④ [Initial Delay]


Duration of time between sound input and the start of reverberation. Higher values delay the start of reverberation.

Drag the icon  to change the value.

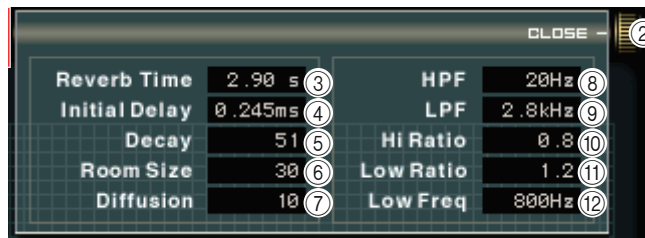
NOTE The range is from 0.0ms through 125.0ms.

⑤ [Decay]

Shape of reverberation envelope. Reverberation characteristics are determined by the value.

Drag the icon  to change the value.

NOTE The range is from 0 through 53.



⑥ [Room Size]

Size of space. Higher values simulate larger spaces.

This value is linked with the **Reverb Time** value. When you change this value, the **Reverb Time** value changes.

Drag the icon ▲ to change the value.

NOTE The range is from 0 through 28.

⑦ [Diffusion]

Density and spread of reverberation. Higher values increase the density and enhance the spread.

Drag the icon ▼ to change the value.

NOTE The range is from 0 through 10.

⑧ [HPF]

This filter cuts the low frequency range of the reverberation. The range below the frequency specified by this value is cut. This filter does not affect the original source sound.

Drag the icon ▼ to change the value.

NOTE The range is Thru to 8.00kHz.

⑨ [LPF]

This filter cuts the high frequency range of the reverberation. The range above the frequency specified by this value is cut. This filter does not affect the original source sound.

Drag the icon ▼ to change the value.

NOTE The range is 1.00kHz to Thru.

⑩ [Hi Ratio]

Length of reverberation in the high frequency range. The reverberation duration of the high frequency range is expressed as a ratio relative to **Reverb Time**.

Drag the icon ▼ to change the value.

NOTE The range is from 0.1 through 1.0.

⑪ [Lo Ratio]

Length of reverberation in the low frequency range. The reverberation duration of the low frequency range is expressed as a ratio relative to **Reverb Time**.

Drag the icon ▼ to change the value.

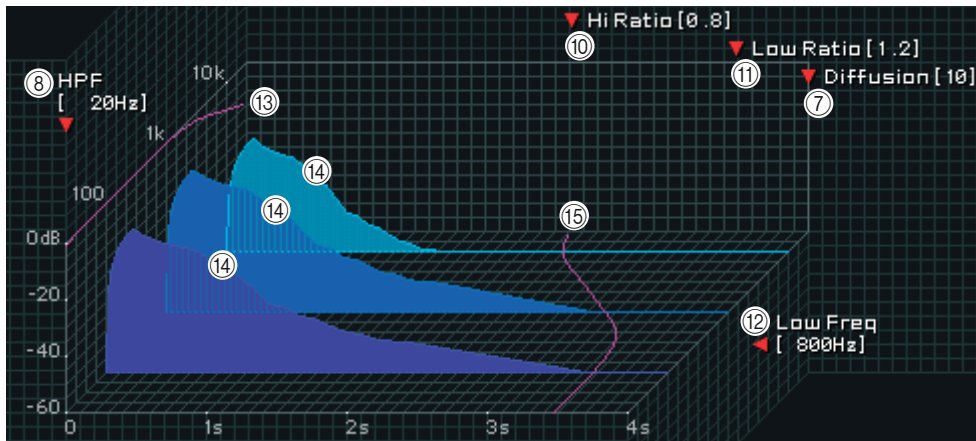
NOTE The range is from 0.1 through 1.4.

⑫ [Low Freq]

Frequency value that serves as the basis for the **Lo Ratio** value. The frequency band below this value is affected by the **Lo Ratio** parameter setting.

Drag the icon ▲ to change the value.

NOTE The range is from 22.0Hz through 18.0kHz.



13 Filter Frequency Response Curve

The curve changes depending on the HPF and LPF values.

14 Reverberation images

These images represent the high-range (10kHz), mid-range (1kHz), and low-range (100Hz) reverberation. These images change shape depending on the parameter values. The vertical axis represents the level; the horizontal axis represents reverb time; the shape represents the envelope.

15 Reverb time curve

This curve represents the high-range (10kHz), mid-range (1kHz), and low-range (100Hz) reverb time. The curve changes depending on the Reverb Time, Hi Ratio, and Lo Ratio parameter values.



16 [Auto Zoom] button

Click the button to automatically adjust the time axis (horizontal axis).

17 Time Axis Set button

Use this button to specify the time duration (in seconds) as displayed by the time axis (horizontal axis).

18 [Zoom Out] button

Click this button to increase the time value (in seconds) as displayed by the time axis (horizontal axis). As a result, the display zooms out on the horizontal axis.

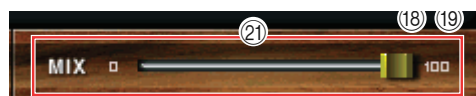
19 [Zoom In] button

Click this button to decrease the time value (in seconds) as displayed by the time axis (horizontal axis). As a result, the display zooms in on the horizontal axis.



20 [OUTPUT] meter

This indicates the output level of the effect.



21 [MIX] slider

These controls enable you to adjust the mix balance of the dry and wet (effect) sounds.

When the balance is 0%, only the dry sound is output. When the balance is 100%, only the wet sound is output.

NOTE The range is from 0 through 100%.

Index

- B**
BYPASS 53
- C**
CHANNEL LINK page 65
CLEAR 47, 65, 69
CLEAR ALL 48, 70, 71, 72, 73, 74
CLOSE 45, 67
Controllers 8
CUSTOM FADER LAYER METER
page 63
Custom Fader Layer
Setup window 74
Custom Fader Layer window 24
Custom Fader Layer ST IN
window 25
- D**
DIRECT OUTPUT PATCH
page 50
- E**
EXTERNAL HA page 60
- F**
FADE TIME 73
FADE TIME page 72
FADING 68
FADING ENABLE 73
FILE 68
FOCUS 68
- G**
GEQ/EFFECT page 52
GLOBAL RECALL SAFE 71
Group/Link window 64
CHANNEL LINK page 65
MUTE GROUP ASSIGN
page 64
- I**
INPUT CH window 13
INPUT CHANNEL FADING
ENABLE 72
INPUT INSERT PATCH page 49
INPUT METER page 61
INPUT PATCH page 48
INPUT SAFE PARAMETERS 70
INTERNAL DATA 69
- K**
Keyboard Shortcuts 76
- L**
Library window 45
- M**
Master window 10
MATRIX window 20
Meter window 61
CUSTOM FADER LAYER
METER page 63
INPUT METER page 61
OUTPUT METER page 62
MIX window 18
MUTE GROUP ASSIGN page 64
- O**
Offline Edit 8
OPEN 45, 67
OUTPUT CHANNEL FADING
ENABLE 73
OUTPUT INSERT PATCH
page 50
OUTPUT METER page 62
OUTPUT PATCH page 49
OUTPUT SAFE PARAMETERS 71
Overview window 13
- P**
Patch Editor window 48
DIRECT OUTPUT PATCH
page 50
INPUT INSERT PATCH
page 49
INPUT PATCH page 48
OUTPUT INSERT PATCH
page 50
OUTPUT PATCH page 49
PATCH LIST page 51
PATCH LIST page 51
PROTECT 68, 69
- R**
Rack window 52
EXTERNAL HA page 60
GEQ/EFFECT page 52
Rack module editor —
Effect window 57
Rack module editor —
GEQ window 54
RECALL 69
RECALL SAFE page 70
Redo 6
REV-X 77
- S**
SAFE 70
SAVE 45, 67
SAVE AS 45, 67
Save as a different name 67
Save under a different name 45
SCENE MEMORY page 67
Scene window 67
FADE TIME page 72
RECALL SAFE page 70
SCENE MEMORY page 67
Selected Channel window 26
BALANCE 42, 44
Channel selection 27
DIRECT OUT 35
DYNAMICS 31
EQUALIZER 30, 39
Fader 36, 40, 42, 44
FROM MIX, ST/MONO 41
HA GAIN/Ø/HPF 28
input channel 26
INSERT 35
MATRIX channel 41
MIX channel 37
MIX SEND 28
MUTE GROUP 36, 40
Pan 40
RECALL SAFE/MUTE SAFE ... 36
STEREO/MONO channel 43
To MATRIX 37
TO STEREO/MONO 29, 38
Sessions 6
SET ALL 70, 71, 72, 73
Setup 2
Console 3
System 2
ST IN window 16
STEREO/MONO window 22
STORE 69
Synchronization 8
Synchronize 8
- T**
TIME STAMP 68
- U**
Undo 6, 69
User Defined Keys
Setup window 75
USER KEY 4

Free Manuals Download Website

<http://myh66.com>

<http://usermanuals.us>

<http://www.somanuals.com>

<http://www.4manuals.cc>

<http://www.manual-lib.com>

<http://www.404manual.com>

<http://www.luxmanual.com>

<http://aubethermostatmanual.com>

Golf course search by state

<http://golfingnear.com>

Email search by domain

<http://emailbydomain.com>

Auto manuals search

<http://auto.somanuals.com>

TV manuals search

<http://tv.somanuals.com>