

User's Manual

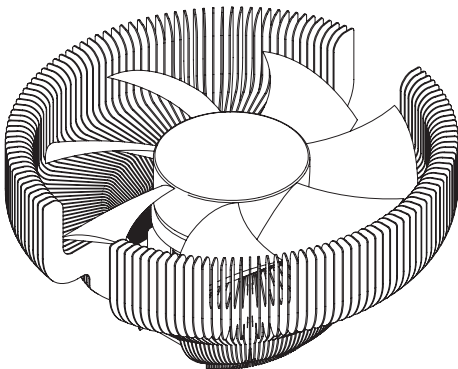
CNPS7700 Series

Intel Socket 1155/1156/775 CPUs

- Core i7
- Core i5
- Core i3
- Core 2 Quad
- Core 2 Duo
- Pentium Dual Core
- Pentium D
- Pentium 4
- Celeron D

AMD Socket 754/939/940 CPUs

- Athlon 64
- Athlon 64 X2
- Athlon 64 FX
- Opteron
- Dual-Core Opteron
- Sempron



To ensure safe and easy installation,
please read the following precautions.

www.ZALMAN.com

1. Precautions

- 1) Use and keep product away from reach of children and pets.
- 2) Do not ingest the Thermal Grease, and avoid its contact with skin and eyes. If contact is made with skin, wash off with water. If ingested or irritation persists, seek medical attention.
- 3) To prevent possible injuries, gloves must be worn while handling this product.
- 4) Excessive force exerted on the fan may cause damage to the fan and/or system.
- 5) Avoid inserting objects or hands into the fan while it is in operation to prevent product damage and injuries.
- 6) Check the components list and condition of the product before installation. If any problem is found, contact the retailer to obtain a replacement.
- 7) Zalman Tech Co., Ltd. is not responsible for any damages due to overclocking.
- 8) During transportation of the system, the cooler must be removed. Zalman is not responsible for any damages that occur during the transport of a system.
- 9) Product design and specifications may be revised to improve quality and performance.

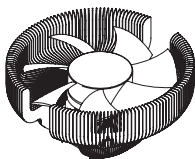
Disclaimer) Zalman Tech Co., Ltd. is not responsible for any damages due to external causes, including but not limited to, improper use, problems with electrical power, accident, neglect, alteration, repair, improper installation, or improper testing.

2. Specifications

Spec.		Model	CNPS7700-Cu CNPS7700-Cu LED	CNPS7700-AICu CNPS7700-AICu LED
Materials			Pure Copper	Pure Copper and Aluminum
Weight			918g	600g
Dimensions			136(L) X 136(W) X 67(H)mm	
Fan	Bearing-Type		2 Ball-Bearing	
	RPM		1,000 ~ 2,000rpm \pm 10%	
	Noise Level		20 ~ 32dBA \pm 10%	
	Input Voltage		12V	
Fan Mate 2	Output Voltage		5V ~ 11V \pm 2%	
	Maximum Capacity		Up to 6W	

3. Components

1) Common Components



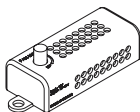
Cooler



Thermal Grease



User's Manual



Fan Mate 2



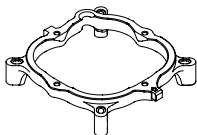
Fan Mate 2 Cable



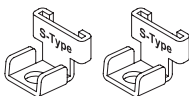
Double-Sided Tape

2) Intel Components

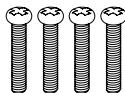
Socket 1155 / 1156 / 775



Clip Support



S-Type Grips



Clip Support Fixing Bolts



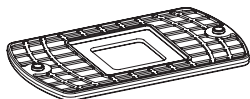
Nuts



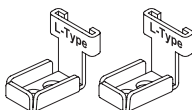
Washers

3) AMD Components

Socket 754 / 939 / 940



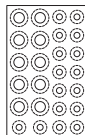
AMD Backplate



L-Type Grips



Backplate Fixing Bolts

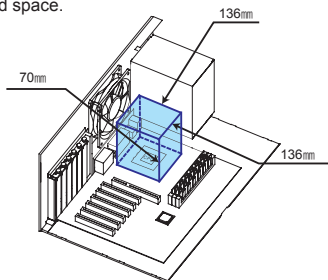


Washer Plate

4. Installation Requirements

1) Space Requirements

The cooler's installation requires unobstructed space with dimensions of 136mm(width), 136mm(height), 70mm(depth), and the CPU as a central reference point. Please check if components such as ODDs and PSU protrude into the required space.



2) Compatible CPUs

① Intel Socket 1155 / 1156 / 775 CPUs

Core i7 / i5 / i3	Core 2 Quad	Core 2 Duo
all clock speeds	all clock speeds	all clock speeds
Pentium 4		Celeron D
Prescott	Cedar Mill	
up to 540	up to 650	all clock speeds

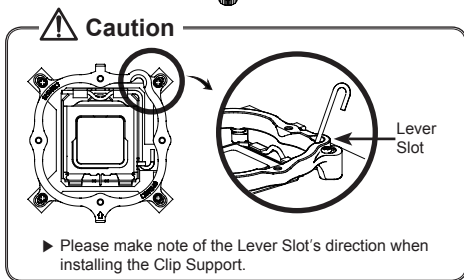
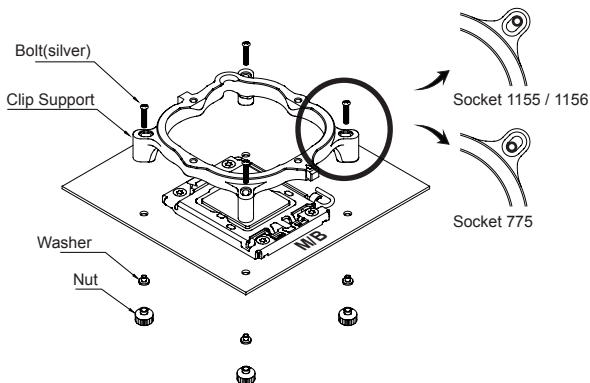
② AMD Socket 754 / 939 / 940 CPUs

Athlon 64 FX	Athlon 64 X2	Athlon 64	Sempron
up to 53	up to 5600+	all clock speeds	all clock speeds

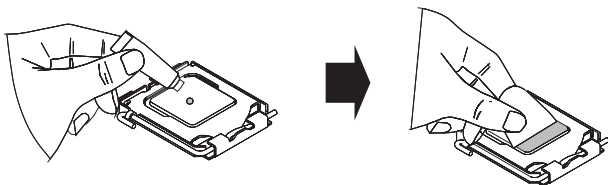
5. Installation

1) Intel Socket 1155 / 1156 / 775 Installation

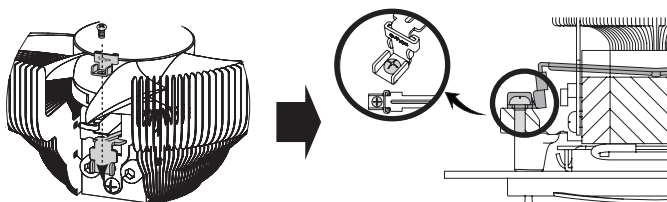
- ① Install the Clip Support to the motherboard according to the socket-type.



- ② Clear off any particles or residue from the CPU's surface then spread a thorough layer of Thermal Grease on the CPU and the base of the cooler.

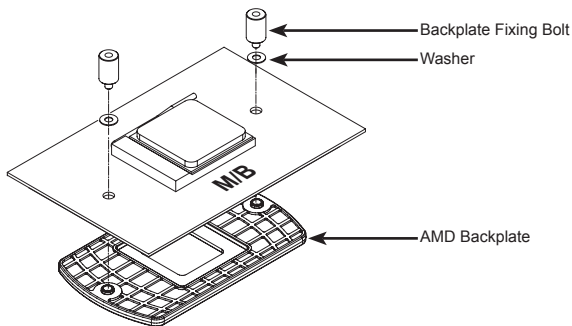


- ③ Install the S-Type Grips to both sides of the Clip and fasten Bolts through the holes of the Grips onto the Clip Support.

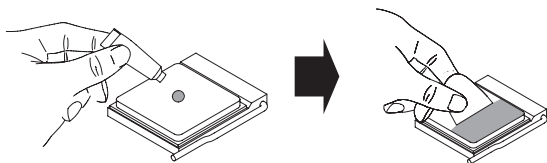


2) AMD Sockets 754 / 939 / 940 Installation

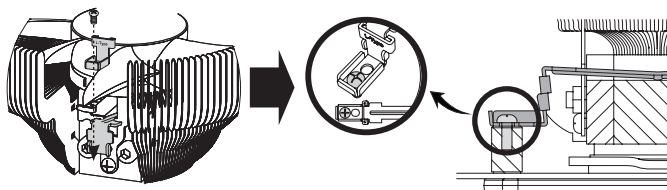
- ① Install the AMD Backplate to the motherboard using Washers and Backplate Fixing Bolts.



- ② Clear off any particles or residue from the CPU's surface then spread a thorough layer of Thermal Grease on the CPU and the base of the cooler.



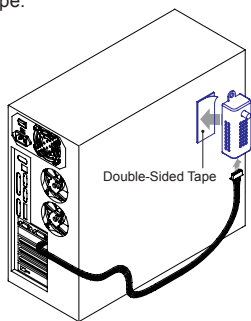
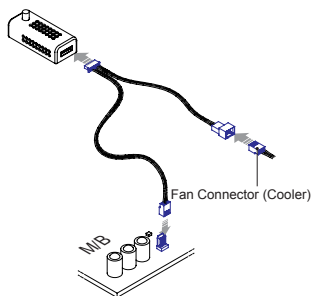
- ③ Install the L-Type Grip to both sides of the Clip and fasten Bolts through the holes of the Grips onto the Clip Support.



6. Fan Mate 2 Installation and Usage

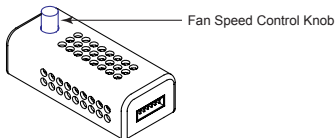
1) Fan Mate 2 Installation

- ① Connect Fan Mate 2 between the Fan Cable and the motherboard as shown in the diagram below.
- ② Fan Mate 2 can be installed to the side of the case using Double-Sided Tape.



2) Fan Mate 2 Operation

Adjust the Fan Speed Control Knob for RPM control.



! BIOS Booting Error

In the case that you get a BIOS error beep:

- ① Rotate the Fan Speed Control Knob clockwise to the maximum setting.
- ② Disable CPU Fan Detected in BIOS setting or set the system monitoring program's CPU Fan RPM to the lowest setting.

※ Certain motherboards will not boot if the CPU fan's RPM is not detected. In this case inquire to the motherboard's manufacturer for additional details.

GS1000 / GS1000SE

- E-ATX / Standard ATX / microATX Compatible
 - * Supports Intel Dual Xeon server motherboards
- UP to 6 Hot Swap HDD Bays
 - * GS1000(3 Standard / 3 Optional)
 - * GS1000 SE(Optional)
- Tool-Free HDD Installation
- Airflow Optimized Design
- Vibration Absorbing HDD Dampers and Feet
- The World's First Roller Rails for Smooth & Easy PSU Installation
- Cable Compartment Behind the Motherboard for Cable Management
- Dedicated Fan Compartment for Fanless PSU Users
- Up to a Total of 8 HDD Bays
 - * 2 Adaptors & Bezels included for use of two 5.25" bays as 3.5" Internal(HDD)/ External(FDD) Bays



GT1000

- High-End Gaming Enclosure Built with Sturdy All Aluminum Panels
- Three Tool-Free Hinged Magnetic Panels (2 Left, 1 Right) for Easy Installation and Access to Components
- Tool-Free Installation of Disk Drives, Fan Controlles, Audio Interfaces etc.
- Accommodates up to 6 Hard Drives
- Luxurious and Cool Aesthetics.
- Color Option: Black (Red LED Fans), Titanium (Blue LED Panel).



For more information, please visit our website.

Free Manuals Download Website

<http://myh66.com>

<http://usermanuals.us>

<http://www.somanuals.com>

<http://www.4manuals.cc>

<http://www.manual-lib.com>

<http://www.404manual.com>

<http://www.luxmanual.com>

<http://aubethermostatmanual.com>

Golf course search by state

<http://golfingnear.com>

Email search by domain

<http://emailbydomain.com>

Auto manuals search

<http://auto.somanuals.com>

TV manuals search

<http://tv.somanuals.com>