

RANGE COMPOSITION

The range consists of 2 models with a capacity of 720 plates per hour designed to wash plates, cutlery, glasses, cups and gastronorm trays.

502051 - ACTIVE model with drain pump and continuous water softener (CWS)

502053 - ACTIVE model with drain pump, detergent dispenser and continuous water softener (CWS).



502051

TOP VERSION WITH CWS

UNDERCOUNTER DISHWASHERS **ZANUSSI** PROFESSIONAL

FUNCTIONAL AND CONSTRUCTION FEATURES

- ◆ All models are ACTIVE and feature the Guaranteed Rinse System. The rinsing is always at a temperature of 84°C throughout the rinse cycle thus guaranteeing rinse quality of the tableware in line with current international standards. The atmospheric boiler guarantees a constant high rinse temperature independent from the network water pressure (with a minimum of 0.5 bar).
- ◆ 4 second (variable) pause after washing and before rinsing ensures that no drops of unclean water will fall on the clean items at the end of the rinsing cycle.
- ◆ Three dishwashing programs: 1st cycle of 90 seconds for lightly soiled items, 2nd cycle of 120 seconds for normally soiled items and 3rd cycle of 240 seconds for heavily soiled items.
- ◆ Fault auto-diagnosis system.
- ◆ An effective rinse system that uses only 3 litres of clean hot water per rack to ensure lower running costs (in energy, water and chemical consumption).

* Declared actual cycle duration times can extend when water supply temperature is lower than indicated.

TECHNICAL DATA	MODELS	
	ZUCAIDPWS 502051	ZUCAIDDWS 502053
CHARACTERISTICS		
Water supply		
temperature - °C	50	50
hardness - °f	<48	<48
pressure max - bar	7	7
pressure min- bar	0.5	0.5
Thermometer	●	●
Drain pump	●	●
Rinse Booster Pump	●	●
Rinse box	●	●
Detergent dispenser	●	●
Rinse aid dispenser	●	●
N° of cycles	3	3
Duration cycles - sec.	90/120/240	90/120/240
Dishes capacity/h	720	720
Basket capacity/h	40	40
External dimensions - mm		
width	600	600
depth	612	612
height	850	850
Cell dimensions - mm		
width	500	500
depth	500	500
height	335	335
Washing cycle		
temperature - °C	55-65	55-65
tank capacity - lt.	23	23
power pump - kW	0.736	0.736
electrical elements - kW	2	2
Hot rinse cycle		
duration - sec.	12	12
temperature during rinse - °C	84	84
water consumption - lt./cycle	3	3
Boiler capacity - lt.	12	12
Boiler elements - kW	4.5	4.5
Power - kW		
drain pump	0.034	0.034
Rinse pump	0.26	0.26
total power	5.35	5.35
Noise level - dBA	<65	<65
Net weight - kg.	71	71
Supply voltage	400 V, 3N, 50	400 V, 3N, 50
Convertible to	230 V / 3 / 50 Hz; 230 V / 1+N / 50 Hz	230 V / 3 / 50 Hz; 230 V / 1+N / 50 Hz
INCLUDED ACCESSORIES		
BASKET FOR 18 DINNER PLATES 240MM-YELLOW	1	1
BASKET FOR 48 SMALL CUPS/24 CUPS-BLUE	1	1
YELLOW CUTLERY CONTAINER	2	2

CONTINUOUS WATER SOFTENER

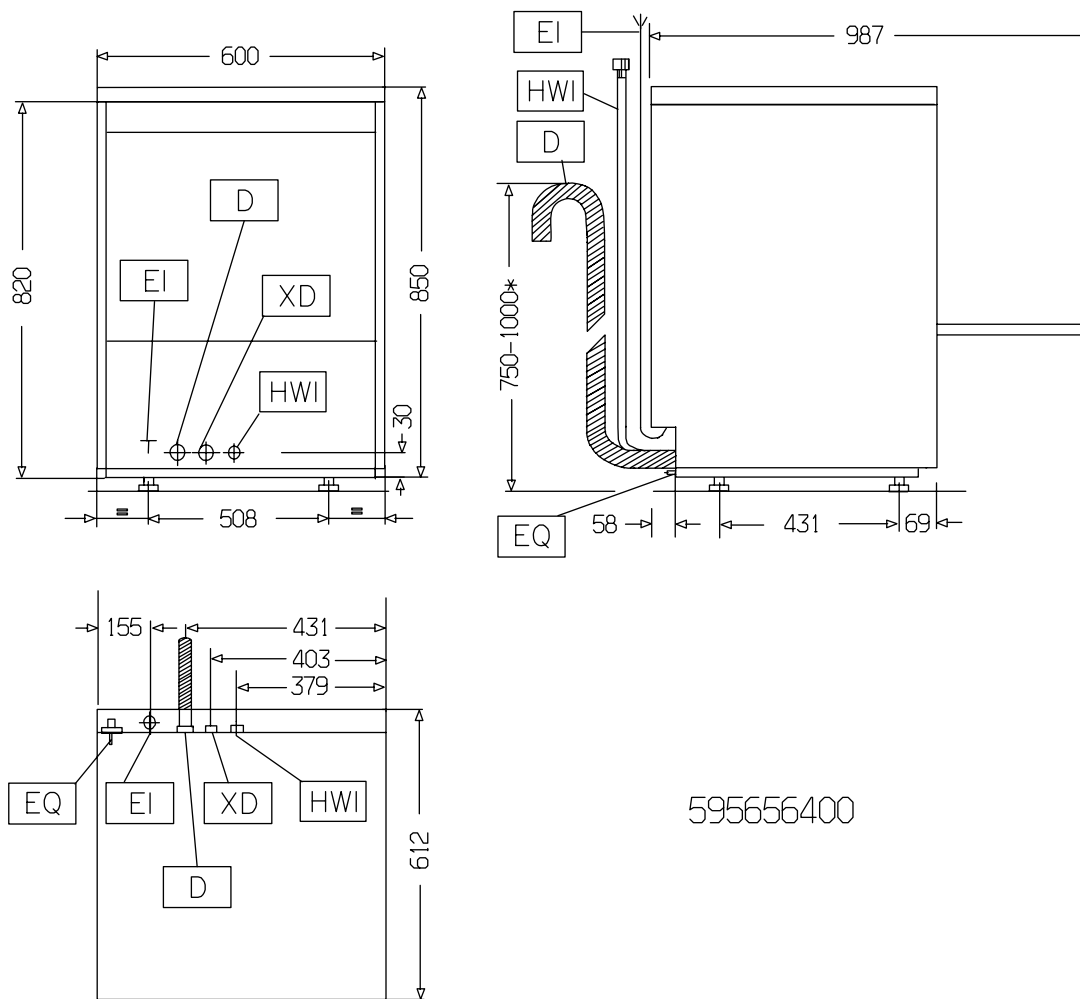
- ◆ Two resin containers automatically alternate between softening and regenerating to provide non-stop washing.
- ◆ Regeneration activated automatically – no operator intervention.
- ◆ 100% of rinse water softened with no pressure drop during rinse to ensure full detergent removal and perfect rinse quality of items.
- ◆ Comfortable front loading of regeneration salt.

- ◆ Double skinned insulated wall ensures a low noise level and a reduction in heat loss from the machine.
- ◆ All the machines have smooth surfaces to facilitate cleaning.
- ◆ Large deep drawn wash tank and internal wash area with round corners and no pipes to avoid dirt built-up.
- ◆ The boiler drain facilitates the evacuation of stagnant water after long periods of inactivity to ensure a higher level of hygiene.
- ◆ The fully automatic self-cleaning cycle avoids the risk of bacteria proliferation.
- ◆ High efficiency air gap (class A) in water inlet circuit to avoid water being siphoned back into the network as a result of a sudden drop in main pressures.
- ◆ Front, side and back panels, door, wash tank, tank filter and wash/rinse arms made in heavy duty anti-corrosive AISI 304 stainless steel to guarantee appliance durability.
- ◆ 304L stainless steel boiler with higher welding protection improves the resistance against corrosion from chlorinated water.
- ◆ PVC water supply hose with metal connections resistant to high water pressure.
- ◆ The IPX4 water protection prevents external infiltrations.
- ◆ The incorporated Soft Start feature offers additional protection to delicate items such as glassware and crockery and increases wash pump reliability.
- ◆ Simple control panel with digital display allows on-site personalization of washing and rinsing cycle times and temperatures as well as precise rinse aid and detergent quantities depending on the customers needs.
- ◆ Three phase or single phase electrical connection, convertible on-site.
- ◆ All machines are pre-arranged to accept external dispensers.
- ◆ Counterbalanced door with springs to lighten the load when opening and closing.
- ◆ The wash tank filters can be removed without extracting the washing and rinsing arms.
- ◆ Pre-arrangement for HACCP system implementation and Energy Management device.
- ◆ Completely closed on the reverse by a cover plate.
- ◆ 98% recyclable by weight.
- ◆ CFC free packaging.
- ◆ In compliance with CE requirements.
- ◆ Low noise level.
- ◆ Developed and produced in ISO 9001 and ISO 14001 certified factory.

OPTIONAL ACCESSORIES ACCESSORIES	MODELS	
	ZUCAIDPWS 502051	ZUCAIDDWS 502053
BASKET FOR 18 DINNER PLATES 240MM-YELLOW	867002	867002
BASKET FOR 48 SMALL CUPS/24 CUPS-BLUE	867007	867007
BASKET FOR 5 TRAYS 530X325MM-RED	867006	867006
BASKET FOR WINE GLASSES 500X500X246	867019	867019
BASKET SEMI-PROFESSIONAL 500X500X190MM	867024	867024
BRASS INLET VALVE KIT FOR UC AND HT	864000	864000
COVER GRID FOR SMALL/LIGHT ITEMS IN RACK	867016	867016
DETERGENT LEVEL PROBE KIT FOR UC+HT DW	864004	864004
DETERGENT PUMP KIT	864218	
HACCP PRINTER KIT FOR UC, HT AND POTW	864002	864002
INTEGRATED HACCP KIT FOR UC, HT AND POTW	864001	864001
KIT 4 CASTORS F.DOUBLE SKINNED UNDERC.DW	864008	864008
KIT 4 PLASTIC BOXES FOR CUTLERY-YELLOW	865574	865574
KIT HACCP EKIS	922166	922166
KIT TO MEASURE TOTAL/PART.WATER HARDNESS	864050	864050
RINSE AID LEVEL PROBE KIT FOR UC+HT DW	864005	864005
STAINLESS STEEL INLET HOSE KIT	864016	864016
STAND FOR UNDERCOUNTER DISHWASHER	860418	860418
WIRE BASKET FOR 12 PLATES UP TO 320 MM	867014	867014
YELLOW CUTLERY CONTAINER	864242	864242



www.zanussiprofessional.com



595656400

LEGEND		
	ZUCAIDPWS 502051	ZUCAIDDWS 502053
D - Water drain	20.5mm	20.5mm
EI - Electrical connection	400 V, 3N, 50	400 V, 3N, 50
EQ - Equipotential screw	●	●
HWI - Hot water inlet	G 3/4"	G 3/4"
XR - Connection for detergent dispenser	●	●



www.zanussiprofessional.com

Free Manuals Download Website

<http://myh66.com>

<http://usermanuals.us>

<http://www.somanuals.com>

<http://www.4manuals.cc>

<http://www.manual-lib.com>

<http://www.404manual.com>

<http://www.luxmanual.com>

<http://aubethermostatmanual.com>

Golf course search by state

<http://golfingnear.com>

Email search by domain

<http://emailbydomain.com>

Auto manuals search

<http://auto.somanuals.com>

TV manuals search

<http://tv.somanuals.com>